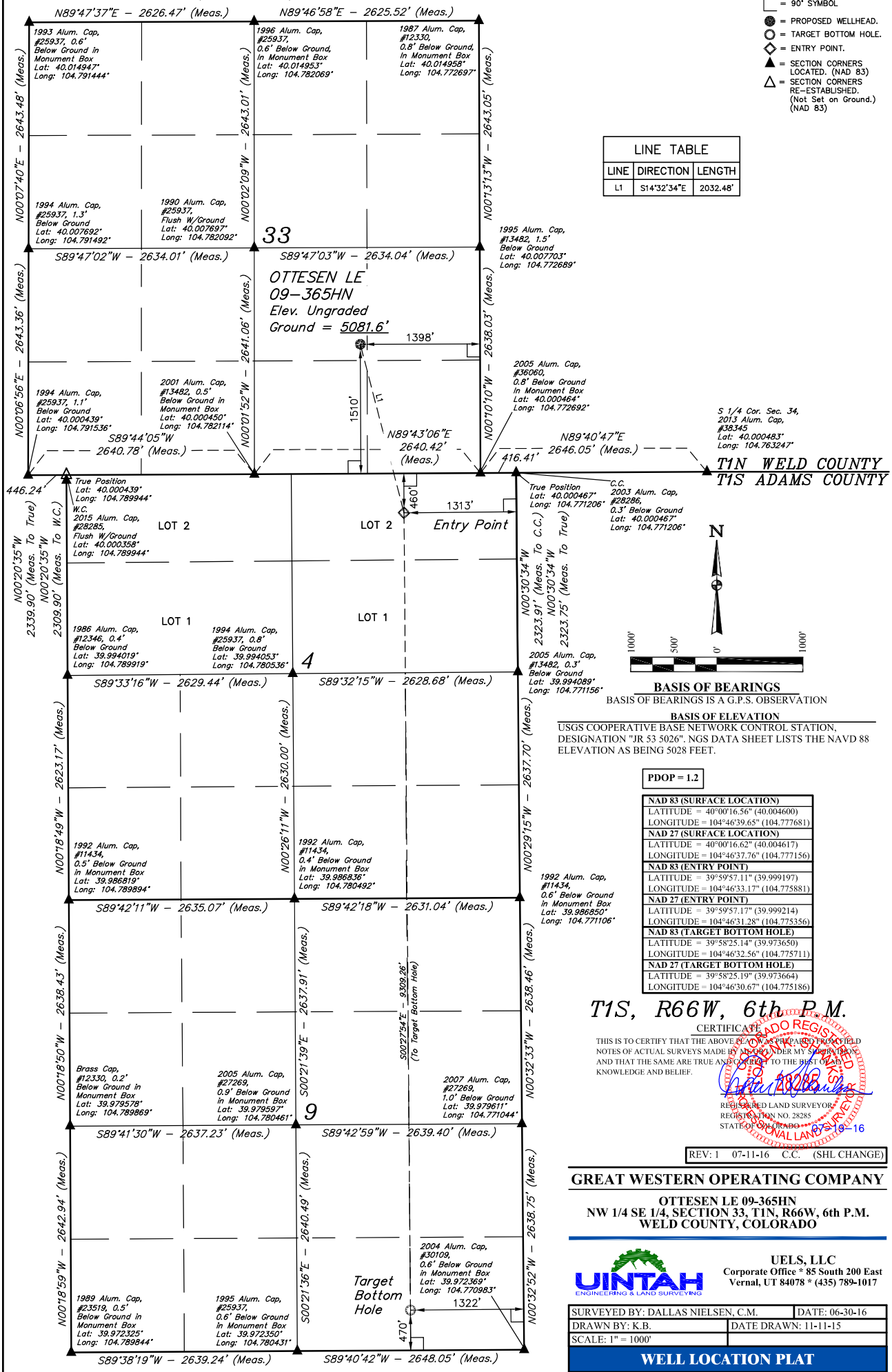


*T1N, R66W, 6th P.M.*

LEGEND:

- L = 90° SYMBOL  
 ● = PROPOSED WELLHEAD.  
 ○ = TARGET BOTTOM HOLE.  
 ◆ = ENTRY POINT.  
 ▲ = SECTION CORNERS  
 LOCATED. (NAD 83)  
 △ = SECTION CORNERS  
 RE-ESTABLISHED.  
 (Not Set on Ground.)  
 (NAD 83)

LINE TABLE		
LINE	DIRECTION	LENGTH
L1	S14°32'34"E	2032.48



*T1S, R66W, 6th P.M.*

CERTIFICATE

THIS IS TO CERTIFY THAT THE ABOVE PLAT WAS PREPARED FROM FIELD NOTES OF ACTUAL SURVEYS MADE BY ME OR UNDER MY SUPERVISION, AND THAT THE SAME ARE TRUE AND CORRECT TO THE BEST OF MY KNOWLEDGE AND BELIEF.

REGISTERED LAND SURVEYOR  
REGISTRATION NO. 28285  
STATE OF COLORADO 07-19-16

REV: 1 07-11-16 C.C. (SHL CHANGE)

**GREAT WESTERN OPERATING COMPANY**

OTTESEN LE 09-365HN  
NW 1/4 SE 1/4, SECTION 33, T1N, R66W, 6th P.M.  
WELD COUNTY, COLORADO



**UELS, LLC**  
Corporate Office \* 85 South 200 East  
Vernal, UT 84078 \* (435) 789-1017

SURVEYED BY: DALLAS NIELSEN, C.M.	DATE: 06-30-16
DRAWN BY: K.B.	DATE DRAWN: 11-11-15
SCALE: 1" = 1000'	

## WELL LOCATION PLAT