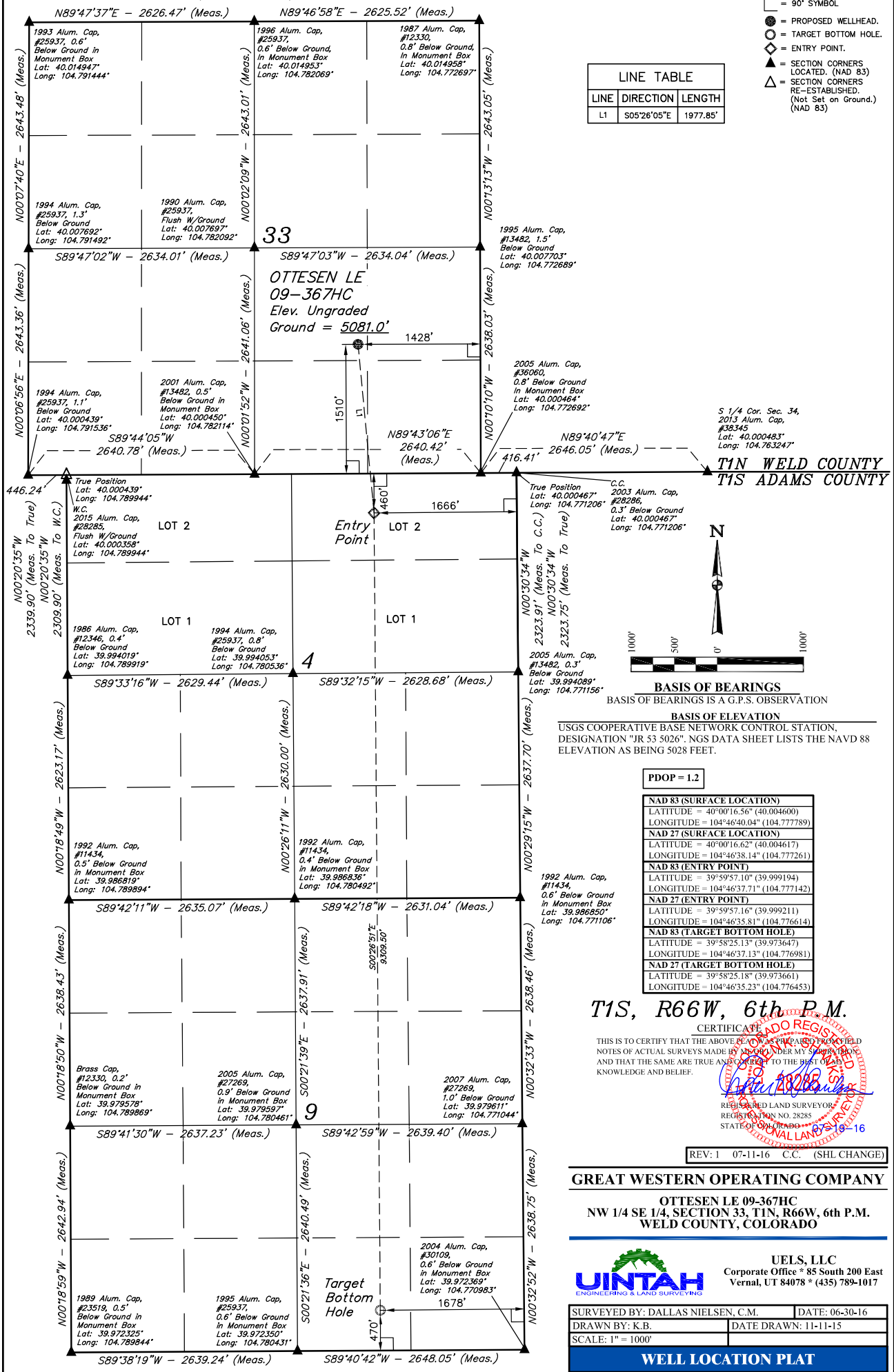


T1N, R66W, 6th P.M.

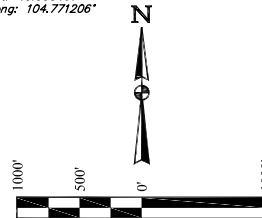
LEGEND:

- = 90° SYMBOL
- = PROPOSED WELLHEAD.
- = TARGET BOTTOM HOLE.
- ◇ = ENTRY POINT.
- ▲ = SECTION CORNERS LOCATED. (NAD 83)
- △ = SECTION CORNERS RE-ESTABLISHED. (Not Set on Ground.) (NAD 83)

LINE TABLE		
LINE	DIRECTION	LENGTH
L1	S05°26'05"E	1977.85'



S 1/4 Cor. Sec. 34,
2013 Alum. Cap.
#38345
Lat: 40.000483°
Long: 104.763247°



BASIS OF BEARINGS

BASIS OF BEARINGS IS A G.P.S. OBSERVATION

BASIS OF ELEVATION

USGS COOPERATIVE BASE NETWORK CONTROL STATION,
DESIGNATION "JR 53 5026". NGS DATA SHEET LISTS THE NAVD 88
ELEVATION AS BEING 5028 FEET.

PDOP = 1.2

NAD 83 (SURFACE LOCATION)	
LATITUDE =	40°00'16.56" (40.004600)
LONGITUDE =	104°46'40.04" (104.777789)
NAD 27 (SURFACE LOCATION)	
LATITUDE =	40°00'16.62" (40.004617)
LONGITUDE =	104°46'38.14" (104.777261)
NAD 83 (ENTRY POINT)	
LATITUDE =	39°59'57.10" (39.999194)
LONGITUDE =	104°46'37.71" (104.777142)
NAD 27 (ENTRY POINT)	
LATITUDE =	39°59'57.16" (39.999211)
LONGITUDE =	104°46'35.81" (104.776614)
NAD 83 (TARGET BOTTOM HOLE)	
LATITUDE =	39°58'25.13" (39.973647)
LONGITUDE =	104°46'37.13" (104.776981)
NAD 27 (TARGET BOTTOM HOLE)	
LATITUDE =	39°58'25.18" (39.973661)
LONGITUDE =	104°46'35.23" (104.776453)

T1S, R66W, 6th P.M.

CERTIFICATE

THIS IS TO CERTIFY THAT THE ABOVE PLAT IS A TRUE AND CORRECT COPY OF THE NOTES OF ACTUAL SURVEYS MADE BY ME, AND THAT THE SAME ARE TRUE AND CORRECT TO THE BEST OF MY KNOWLEDGE AND BELIEF.

REGISTERED LAND SURVEYOR
REGISTRATION NO. 28285
STATE OF COLORADO
07-19-16

REV: 1 07-11-16 C.C. (SHL CHANGE)

GREAT WESTERN OPERATING COMPANY

OTTESEN LE 09-367HC
NW 1/4 SE 1/4, SECTION 33, T1N, R66W, 6th P.M.
WELD COUNTY, COLORADO



UELS, LLC
Corporate Office * 85 South 200 East
Vernal, UT 84078 * (435) 789-1017

SURVEYED BY: DALLAS NIELSEN, C.M.	DATE: 06-30-16
DRAWN BY: K.B.	DATE DRAWN: 11-11-15
SCALE: 1" = 1000'	

WELL LOCATION PLAT