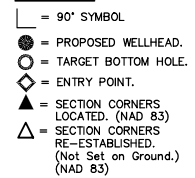
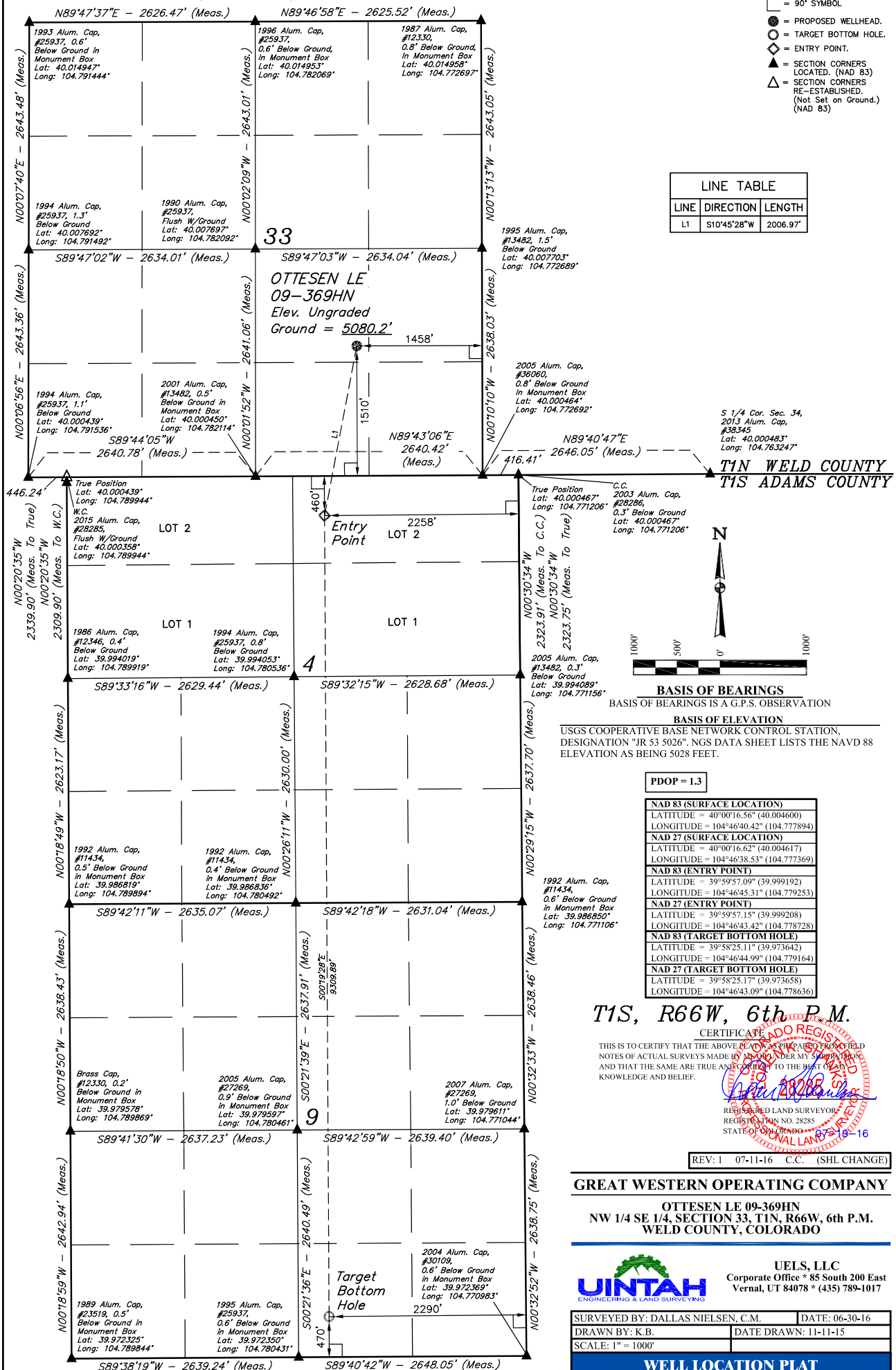


LEGEND:



LINE TABLE		
LINE	DIRECTION	LENGTH
L1	S10°45'28"W	2006.97'



T1S, R66W, 6th P.M.

CERTIFICATE

THIS IS TO CERTIFY THAT THE ABOVE PLAT WAS PREPARED FROM FIELD NOTES OF ACTUAL SURVEYS MADE BY ME OR UNDER MY SUPERVISION, AND THAT THE SAME ARE TRUE AND CORRECT TO THE BEST OF MY KNOWLEDGE AND BELIEF.

REGISTERED LAND SURVEYOR
REGISTRATION NO. 28285
STATE OF COLORADO 07-19-16

REV: 1 07-11-16 C.C. (SHL CHANGE)

GREAT WESTERN OPERATING COMPANY

OTTESEN LE 09-369HN
NW 1/4 SE 1/4, SECTION 33, T1N, R66W, 6th P.M.
WELD COUNTY, COLORADO



UELS, LLC
Corporate Office * 85 South 200 East
Vernal, UT 84078 * (435) 789-1017

SURVEYED BY: DALLAS NIELSEN, C.M.	DATE: 06-30-16
DRAWN BY: K.B.	DATE DRAWN: 11-11-15
SCALE: 1" = 1000'	

WELL LOCATION PLAT