

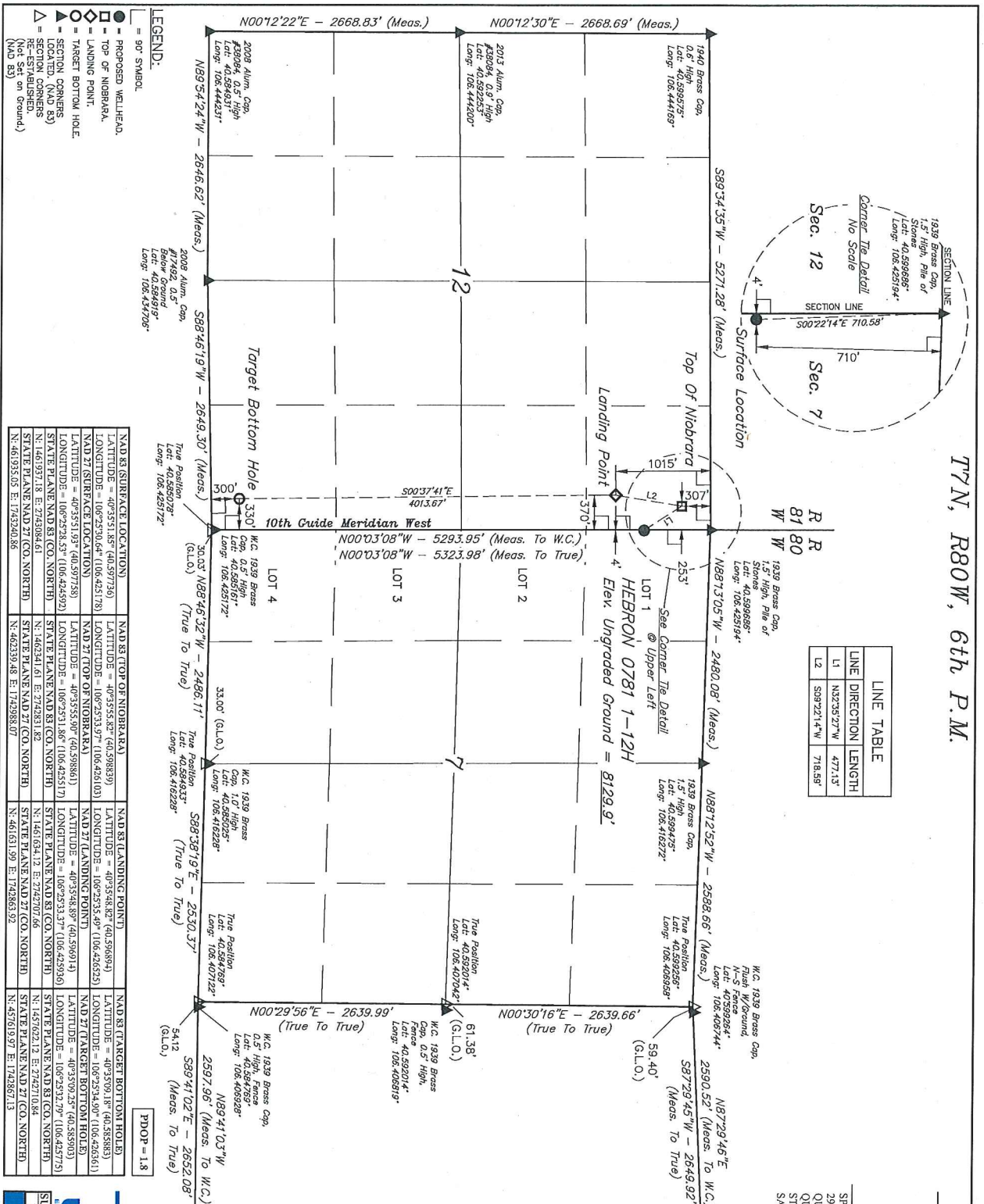
T7N, R80W, 6th P.M.

Sandridge Exploration & Production, LLC

HEBRON 0781 1-12H  
 LOT 1, SECTION 7, T7N, R80W, 6th P.M.  
 JACKSON COUNTY, COLORADO

BASIS OF BEARINGS  
 BASIS OF ELEVATION  
 BASIS OF BEARINGS IS A G.P.S. OBSERVATION  
 BASIS OF ELEVATION AT THE SOUTHEAST CORNER OF SECTION  
 29 T7N, R80W, 6th P.M., TAKEN FROM THE COALMOUNT  
 QUAD (TOPOGRAPHIC MAP) PUBLISHED BY THE UNITED  
 STATES DEPARTMENT OF THE INTERIOR, GEOLOGICAL SURVEY.  
 SAID ELEVATION IS MARKED AS BEING 8156 FEET.

LINE TABLE		
LINE	DIRECTION	LENGTH
L1	N82°55'27"W	477.13'
L2	S89°22'14"W	718.89'



**CERTIFICATE OF LAND SURVEY**  
 I, CHAD MEIERS, D.S., being duly sworn, depose and say that I am a Licensed Professional Surveyor in the State of Colorado, and that I am the author of the above plat, and that the same are true and correct to the best of my knowledge and belief.  
 WITNESSED my hand and the seal of my office this 16th day of September, 2016.  
 CHAD MEIERS, D.S.  
 LICENSE NO. 2008

RECORDED LAND SURVEYOR  
 REGISTERED PROFESSIONAL SURVEYOR  
 STATE OF COLORADO, LICENSE NO. 2008

REV. 1 09-30-16 M.D. (ADD TOP OF NIOBRARA & LP)

WELLS, LLC  
 Corporate Office: 85 South 200 East  
 Vernal, UT 84078 (435) 789-1017

SURVEYED BY: CHAD MEIERS, D.S.  
 DRAWN BY: TTB.  
 SCALE: 09-01-16 1"=1000'  
 WELL LOCATION PLAT