

Reclamation Inspection

10/28/2016

Operator: Markus Production Inc.

Location ID: 406198

Weld County, CO

SESE Section 36 T8N R59W

Aaron Trujillo

Reclamation Specialist

COGCC



COLORADO

Department of Natural Resources

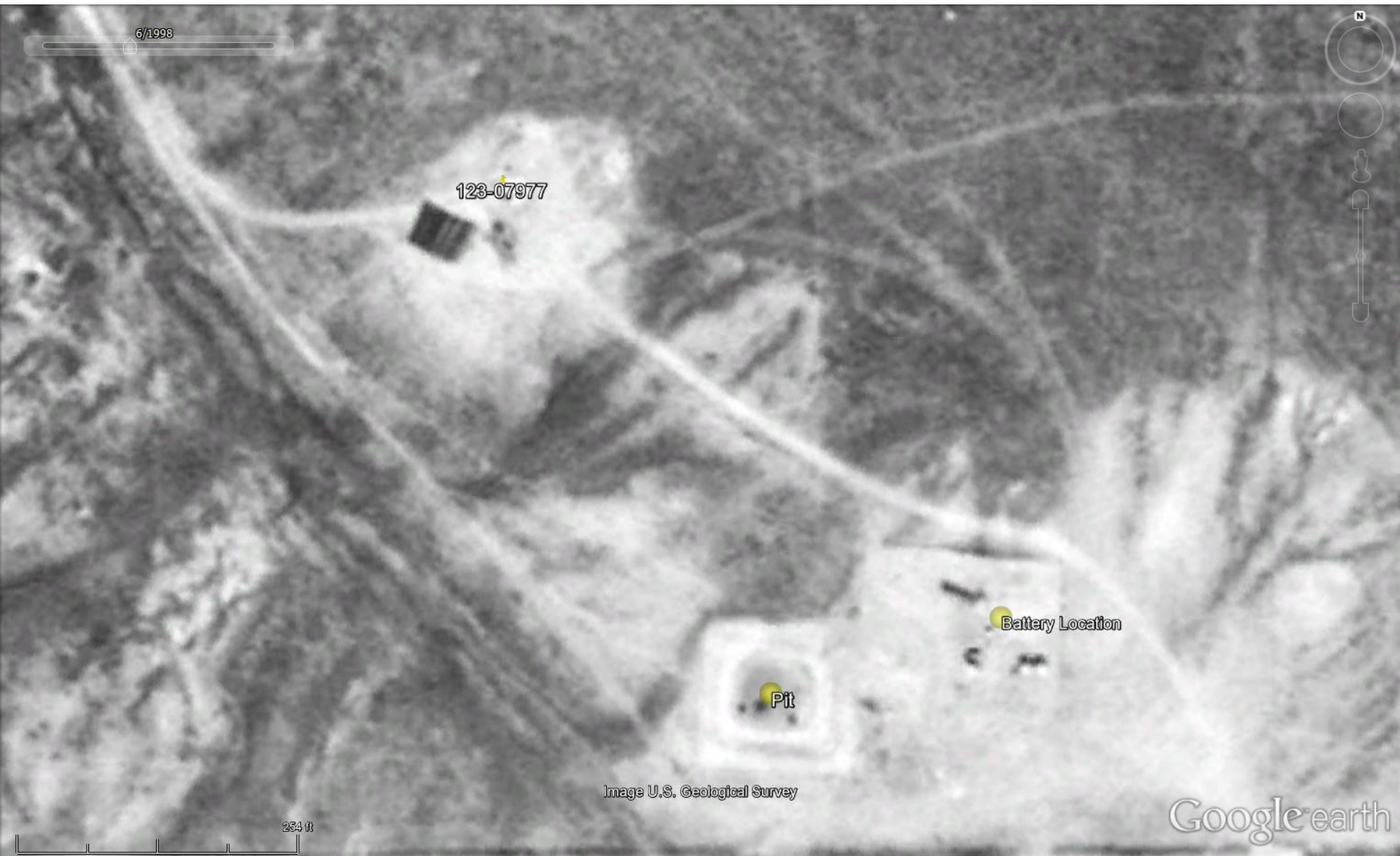


Figure 1: 1998 Aerial image of the location. Image shows areas of the well location, as well as the battery and pit location.



Figure 2: Most current aerial image available (2013) of the location. Image shows areas of the well location, as well as the battery and pit location.



Figure 3: Photo taken from the southeast corner of the well location, facing northeast. Photo shows vegetation over the reclamation area has not achieved uniform cover.



Figure 4: Photo taken from the southeast corner of the location , facing north. Photo shows vegetation over the reclamation area has not achieved uniform cover. 6' measuring stick for reference.



Figure 5: Photo taken from the southwest corner of the location , facing north. Photo shows vegetation over the reclamation area has not achieved uniform cover, and debris remains. 6' measuring stick for reference.



Figure 6: Photo taken from the northeast corner of the location, facing northeast. Photo shows areas on the east end of the location experiencing degradation due to erosion. Photo also shows location has not achieved uniform vegetative cover. 6' measuring stick for reference.



Figure 7: Photo taken from the northeast corner of the location, facing east. Photo shows areas on the east end of the location experiencing degradation due to erosion. Photo also shows location has not achieved uniform vegetative cover. 6' measuring stick for reference.



Figure 8: Photo taken from the east end of the location, facing east. Photo shows areas on the east end of the location experiencing degradation due to erosion 6' measuring stick for reference.



Figure 9: Photo taken from the east end of the location, facing east. Photo shows areas on the east end of the location experiencing degradation due to erosion 6' measuring stick for reference



Figure 10: Photo taken from the east end of the location, facing east. Photo shows areas on the east end of the location experiencing degradation due to erosion 6' measuring stick for reference



Figure 11: Photo taken from the east end of the location, facing east. Photo shows areas on the east end of the location experiencing degradation due to erosion 6' measuring stick for reference



Figure 12: Photo taken from the access road entrance, on the east end of the location, facing east. Photo shows areas where erosion has deepened the ruts in the access road. 6' measuring stick for reference.



Figure 13: Photo taken from the access road entrance, on the east end of the location, facing east. Photo shows areas where erosion has deepened the ruts in the access road. Measuring stick for reference.



Figure 14: Photo taken from the west end of the location, facing northwest. Photo shows “starting” area where a gulley forming to the west of the location has formed.



Figure 15: Photo taken from the west end of the location, facing north. Photo shows “starting” area where a gulley forming to the west of the location has formed. 6’ measuring stick for reference.



Figure 16: Photo taken from the west end of the location, facing north. Photo shows “starting” area where a gulley forming to the west of the location has formed. 6’ measuring stick for reference.



Figure 17: Photo taken west of the location, facing west. Photo shows gully formed by stormwater originating from the location. 6' measuring stick for reference.



Figure 18: Photo taken west of the location, facing west. Photo shows gully formed by stormwater originating from the location. 6' measuring stick for reference.



Figure 19: Photo taken west of the location, facing east. Photo shows gully formed by stormwater originating from the location. Measuring stick for reference.



Figure 20: Photo taken west of the location, facing east. Photo shows gully formed by stormwater originating from the location. 6' measuring stick for reference.



Figure 21: Photo taken from the southwest end of the location. Photo shows cable still remaining.



Figure 22: Photo taken from the south end of the location, facing southeast. Photo shows access road leading from the well location, to the pit/battery location.



Figure 23: Photo taken from the access road leading from the well location, to the pit/battery location, facing southeast.



Figure 24: Photo taken from the access road, on the north end of the pit/battery location, facing northwest.



Figure 25: Photo taken from the access road, on the north end of the pit/battery location, facing north. Photo shows areas that remain unvegetated.



Figure 26: Photo taken from the access road, on the north end of the pit/battery location, facing northwest. Photo shows areas that remain unvegetated.



Figure 27: Photo taken from the access road, on the north end of the pit/battery location, facing northeast. Photo shows areas that remain unvegetated.



Figure 28: Photo taken from the access road, on the northeast end of the pit/battery location, facing northwest. Photo shows areas that remain unvegetated.



Figure 29: Photo taken from the access road, on the north end of the pit/battery location, facing northeast. Photo shows areas that remain unvegetated. 6' measuring stick for reference.



Figure 30: Photo taken from the access road, on the north end of the pit/battery location, facing northeast. Photo shows areas that remain unvegetated. 6' measuring stick for reference.



Figure 31: Photo taken from the access road, on the northeast end of the pit/battery location, facing north. Photo shows areas that remain unvegetated and experiencing degradation due to erosion. 6' measuring stick for reference.



Figure 32: Photo taken from area north of the pit/battery location, facing west. Photo shows area that has either not been recontoured, or has experience erosion degradation.



Figure 33: Photo taken from area north of the pit/battery location, facing north. Photo shows area that has either not been recontoured, or has experience erosion degradation.



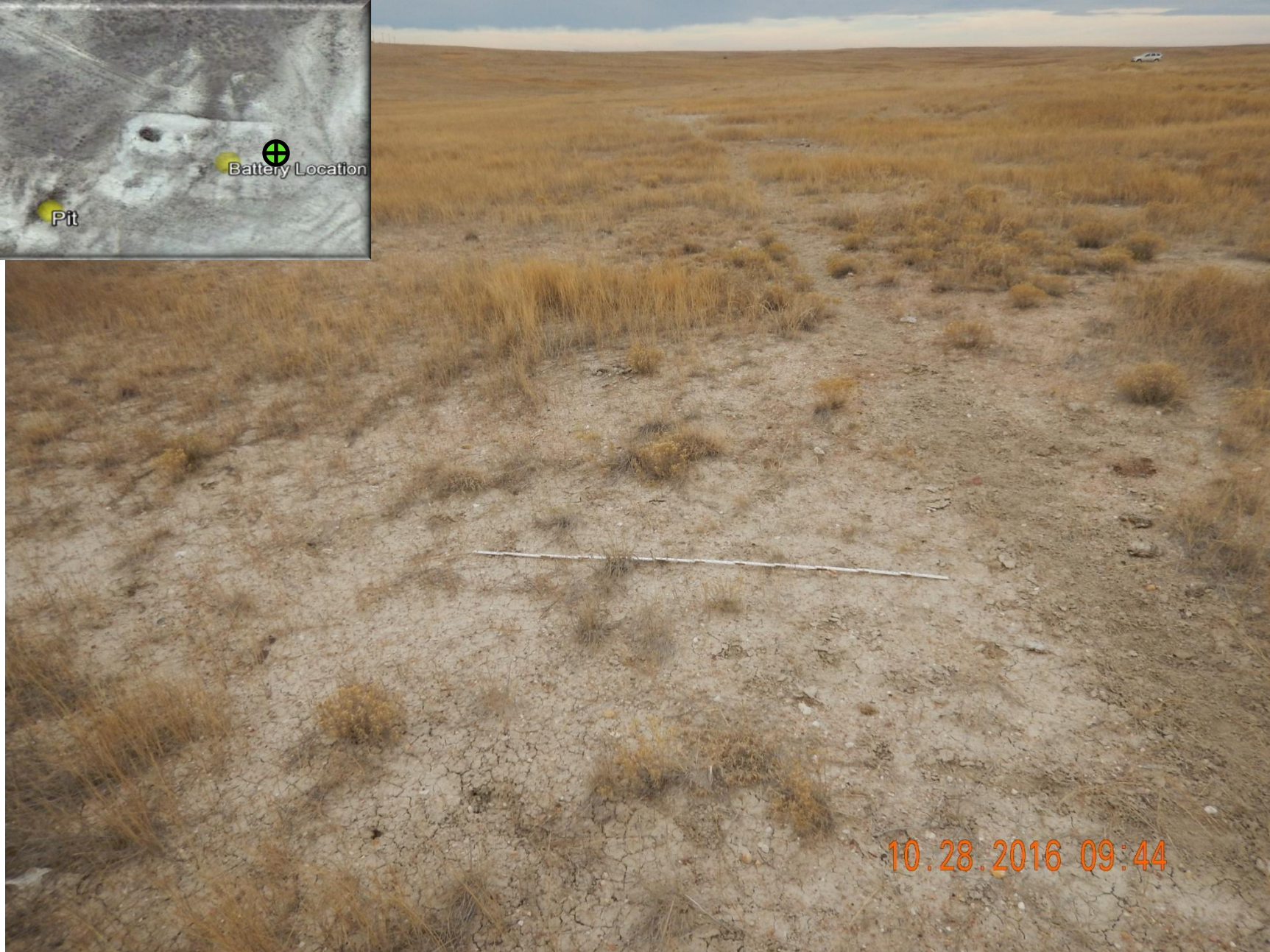
Figure 34: Photo taken from the northeast corner of the battery location, facing west. Photo shows areas pit/battery location has not achieved uniform vegetative cover and large areas remain unvegetated. 6' measuring stick for reference.



Figure 35: Photo taken from northeast corner of the battery location, facing south. Photo shows areas pit/battery location has not achieved uniform vegetative cover and large areas remain unvegetated. 6' measuring stick for reference.



Figure 36: Photo taken from northeast corner of the battery location. Photo shows areas pit/battery location has not achieved uniform vegetative cover and large areas remain unvegetated. 3'x3' measuring stick for reference.



10.28.2016 09:44

Figure 37: Photo taken from east end of the battery location, facing west. Photo shows areas pit/battery location has not achieved uniform vegetative cover and large areas remain unvegetated. 6' measuring stick for reference.



Figure 38: Photo taken from east end of the battery location, facing west. Photo shows areas pit/battery location has not achieved uniform vegetative cover and large areas remain unvegetated. 6' measuring stick for reference.

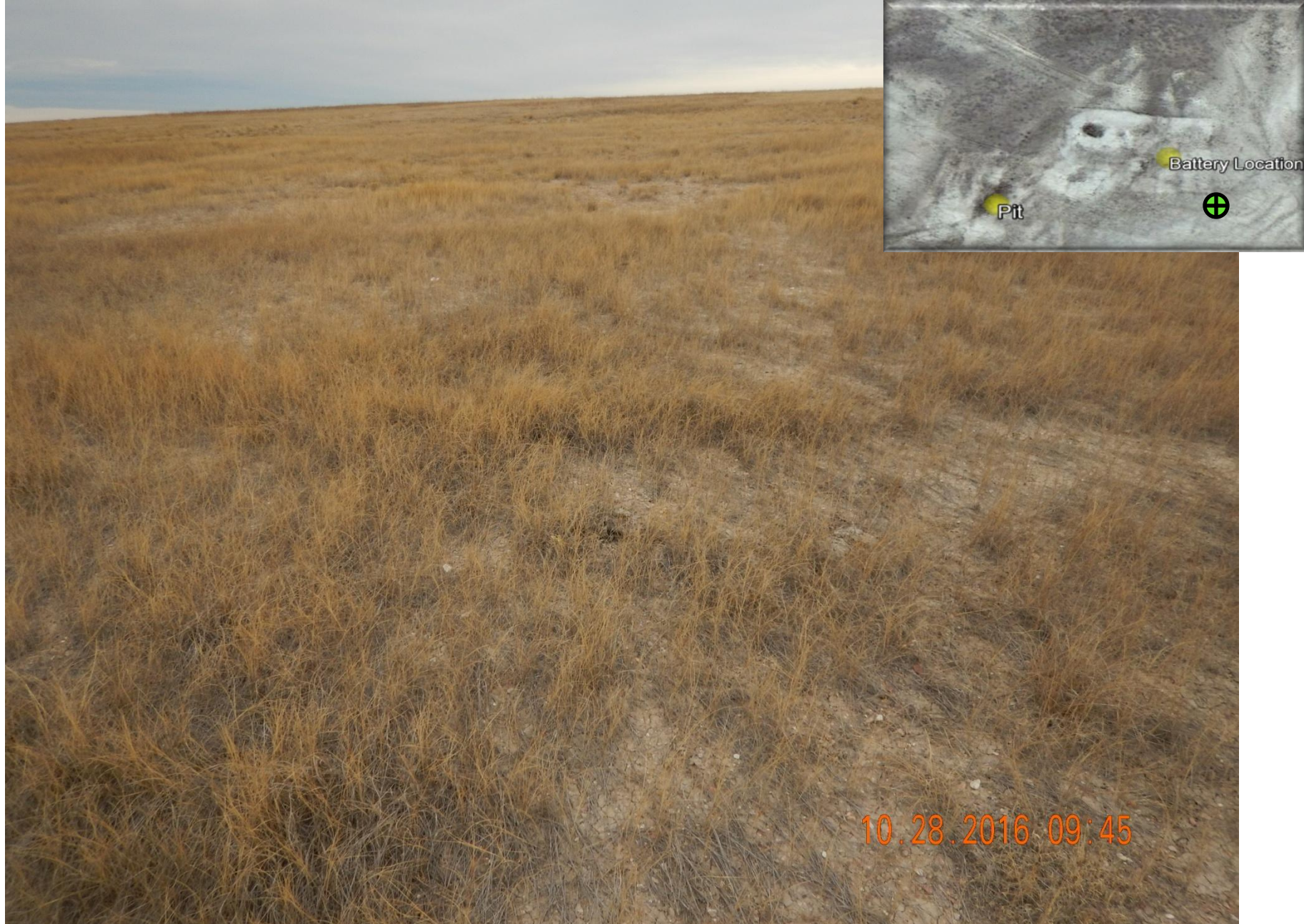


Figure 39: Photo taken from southeast end of the battery location, facing north. Photo shows areas pit/battery location has not achieved uniform vegetative cover and large areas remain unvegetated. 6' measuring stick for reference.



Figure 40: Photo taken from southeast end of the battery location, facing northwest. Photo shows areas pit/battery location has not achieved uniform vegetative cover and large areas remain unvegetated. 6' measuring stick for reference.



Figure 41: Photo taken from southeast end of the battery location, facing west. Photo shows areas pit/battery location has not achieved uniform vegetative cover and large areas remain unvegetated. 6' measuring stick for reference.



Figure 42: Photo taken from southeast end of the battery location, facing north. Photo shows areas pit/battery location has not achieved uniform vegetative cover and large areas remain unvegetated. 6' measuring stick for reference.



Figure 43: Photo taken from southeast end of the battery location, facing northeast. Photo shows areas pit/battery location has not achieved uniform vegetative cover and large areas remain unvegetated. 6' measuring stick for reference.



Figure 44: Photo taken from southeast end of the battery location, facing east. Photo shows areas pit/battery location has not achieved uniform vegetative cover and large areas remain unvegetated. 6' measuring stick for reference.

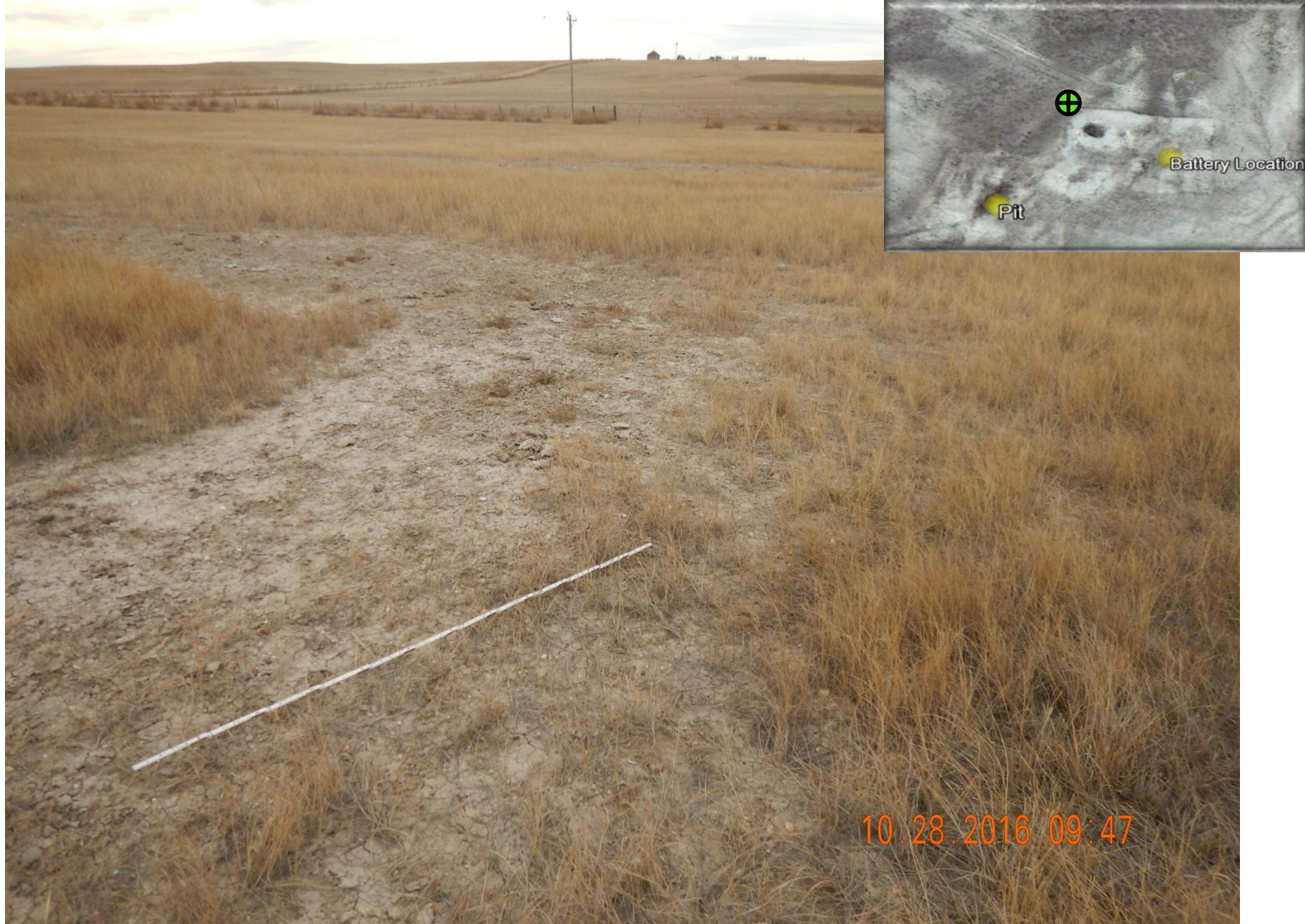


Figure 45: Photo taken from northwest end of the battery location, facing south. Photo shows areas pit/battery location has not achieved uniform vegetative cover and large areas remain unvegetated. 6' measuring stick for reference.



Figure 46: Photo taken from northwest end of the battery location, facing southeast. Photo shows areas pit/battery location has not achieved uniform vegetative cover and large areas remain unvegetated. 6' measuring stick for reference.



10.28.2016 09:47

Figure 47: Photo taken from northwest end of the battery location, facing east. Photo shows areas pit/battery location has not achieved uniform vegetative cover and large areas remain unvegetated. 6' measuring stick for reference.



Figure 48: Photo taken from southeast end of the pit location, facing west. Photo shows areas pit/battery location has not achieved uniform vegetative cover and large areas remain unvegetated. 6' measuring stick for reference.

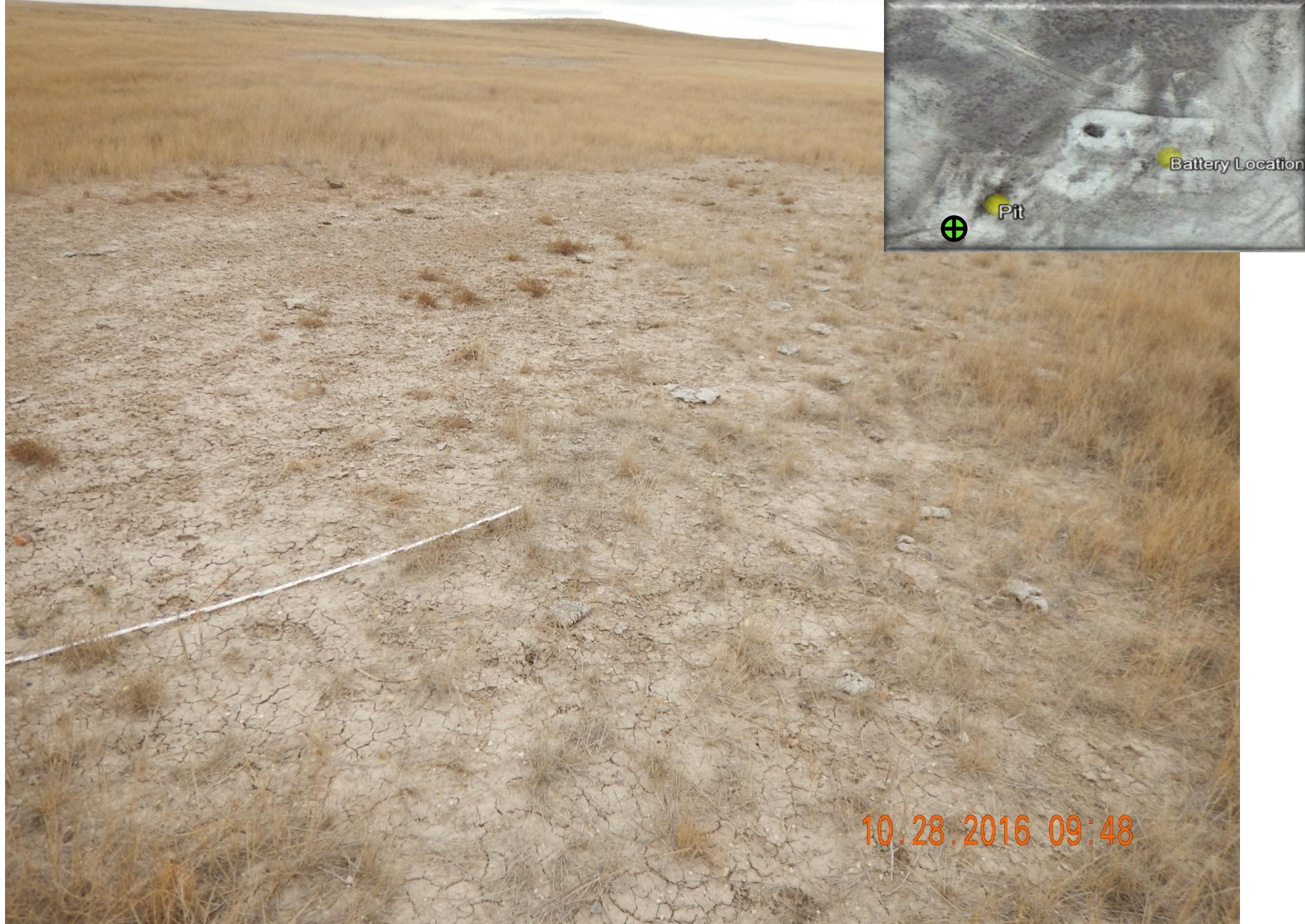


Figure 49: Photo taken from south end of the pit location, facing east. Photo shows areas pit/battery location has not achieved uniform vegetative cover and large areas remain unvegetated. 6' measuring stick for reference.



Figure 50: Photo taken from south end of the pit location, facing north. Photo shows areas pit/battery location has not achieved uniform vegetative cover and large areas remain unvegetated. 6' measuring stick for reference.



Figure 51: Photo taken from south end of the pit location, facing northwest. Photo shows areas pit/battery location has not achieved uniform vegetative cover and large areas remain unvegetated. 6' measuring stick for reference.



Figure 52: Photo taken from southwest end of the pit location, facing northeast. Photo shows areas pit/battery location has not achieved uniform vegetative cover and large areas remain unvegetated. 6' measuring stick for reference.



10.28.2016 09:49

Figure 53: Photo taken from south end of the pit location, facing east. Photo shows areas pit/battery location has not achieved uniform vegetative cover and large areas remain unvegetated. 6' measuring stick for reference.



Figure 54: Photo taken from south end of the pit location, facing southeast. Photo shows areas pit/battery location has not achieved uniform vegetative cover and large areas remain unvegetated. 6' measuring stick for reference.