



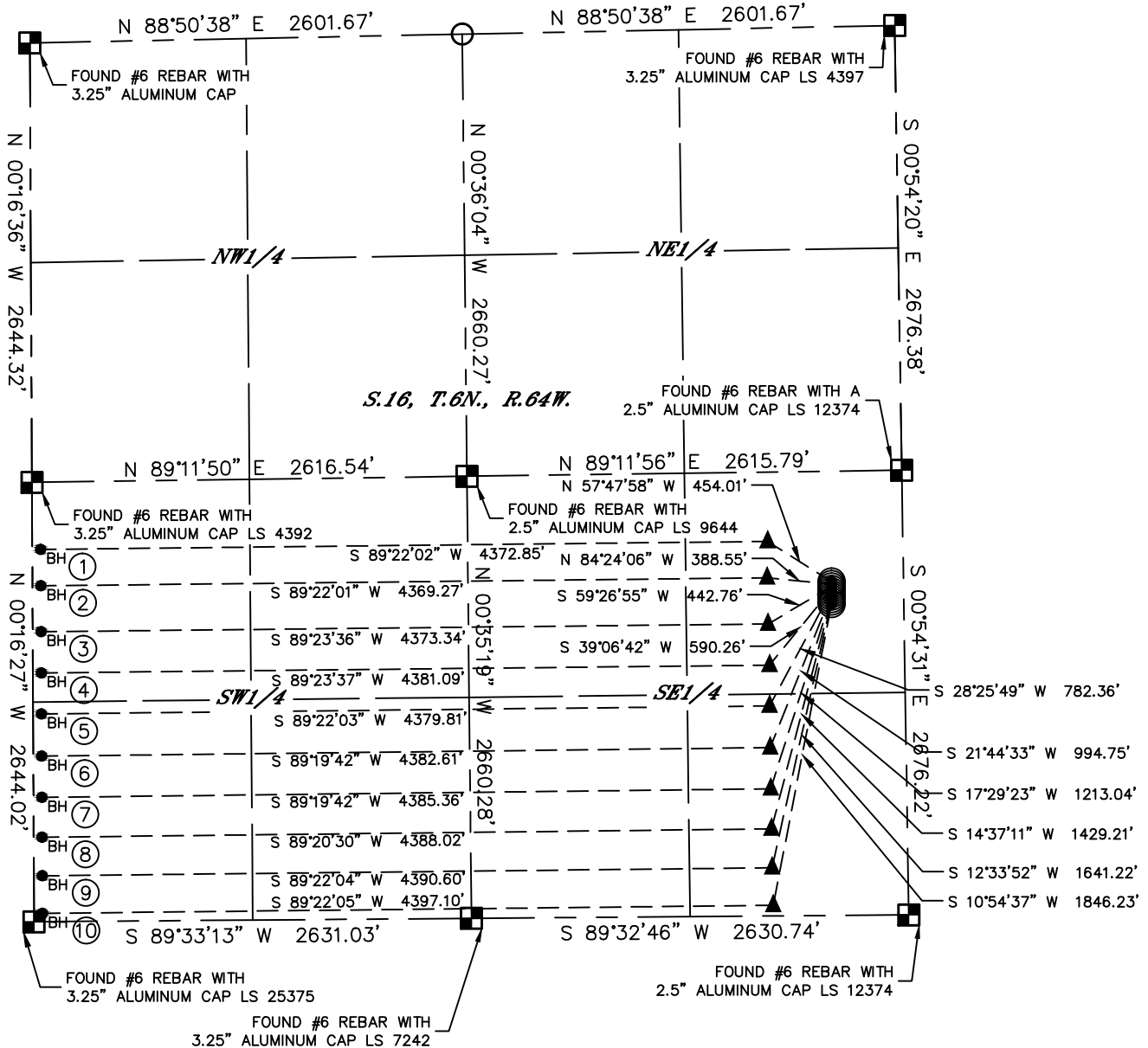
Lat40°, Inc. 6250 W. 10th Street, Unit 2, Greeley, CO 970-515-5294

MULTI-WELL PLAN

JOHNSON 6N64W16D PAD

THIS MAP DOES NOT REPRESENT A BOUNDARY SURVEY

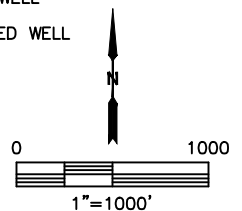
SECTION: 16
TOWNSHIP: 6N
RANGE: 64W
6TH. P.M.
WELD COUNTY, CO



LEGEND

- = ALIQUOT MONUMENT AS DESCRIBED
- = CALCULATED POSITION
- = SURFACE HOLE LOCATION (SHL)
- ▲ = ENTRY POINT LOCATION (EP)
- _{BH} = BOTTOM HOLE LOCATION (BHL)
- ⊙ = EXISTING WELL
- ⊙ = ABANDONED WELL

#	WELL NAME	BHL FOOTAGE				BHL LAT°	BHL LONG°	BHL S-T-R
1	JOHNSON 16W-434	2240	FSL	50	FWL	40.48489	-104.56436	16-6-64
2	JOHNSON 16W-334	2021	FSL	50	FWL	40.48429	-104.56437	16-6-64
3	JOHNSON 16X-214	1745	FSL	50	FWL	40.48353	-104.56437	16-6-64
4	JOHNSON 16X-404	1497	FSL	50	FWL	40.48285	-104.56438	16-6-64
5	JOHNSON 16X-304	1250	FSL	50	FWL	40.48217	-104.56438	16-6-64
6	JOHNSON 16X-234	996	FSL	50	FWL	40.48148	-104.56439	16-6-64
7	JOHNSON 16X-334	748	FSL	50	FWL	40.48080	-104.56439	16-6-64
8	JOHNSON 16Y-214	508	FSL	50	FWL	40.48014	-104.56440	16-6-64
9	JOHNSON 16Y-314	276	FSL	50	FWL	40.47950	-104.56440	16-6-64
10	JOHNSON 16Y-404	50	FSL	50	FWL	40.47888	-104.56441	16-6-64





Lat40°, Inc. 6250 W. 10th Street, Unit 2, Greeley, CO 970-515-5294

MULTI-WELL PLAN

JOHNSON 6N64W16D PAD

SECTION: 16
TOWNSHIP: 6N
RANGE: 64W
6TH. P.M.
WELD COUNTY, CO

