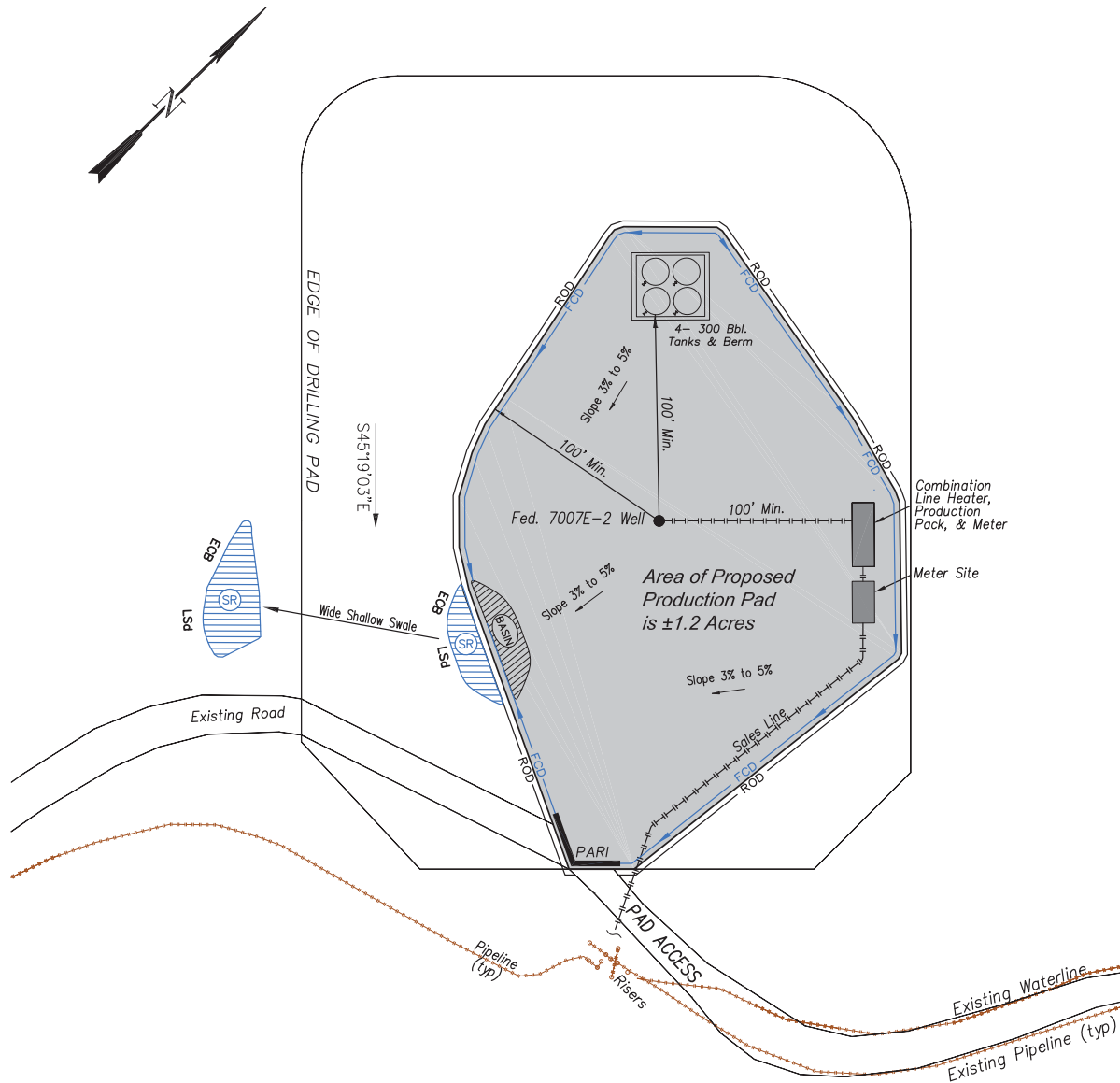


ENCANA OIL & GAS (USA) INC.
H2SW WELL PAD
- PRODUCTION SCHEMATIC -
LOCATED IN LOT 12 OF SECTION 2
T8S, R93W, 6TH PM. GARFIELD COUNTY, COLORADO



NOTES:

1. Set Tanks High so pad Entrance & Tank Area Can Drain to Pad Basin
2. Gravel Pad 75' from Wells & Around Tanks and Separators
3. Pad Drains to Pad Basin at a 3% to 5% slope
4. BMP Selection and Position may change Depending on Actual Conditions Encountered During the Construction Process

NOTE:

Actual Equipment Layout and Reclaimed Pad Surface Area May Change due to Production Requirements or Site Conditions.

ESTIMATED AREAS
RECLAIMED AREA: 3.1 ACRES
UNRECLAIMED AREA: 1.2 ACRES
(PRODUCTION PAD)

LEGEND

SedR = SEDIMENT RESERVOIR
R.O.D. = RUN-ON DIVERSION
LSd = LEVEL SPREADER
ECB = EROSION CONTROL BLANKET
FCD = FLOW CONTROL DITCH
PARI = PAD/ACCESS ROAD INTERFACE

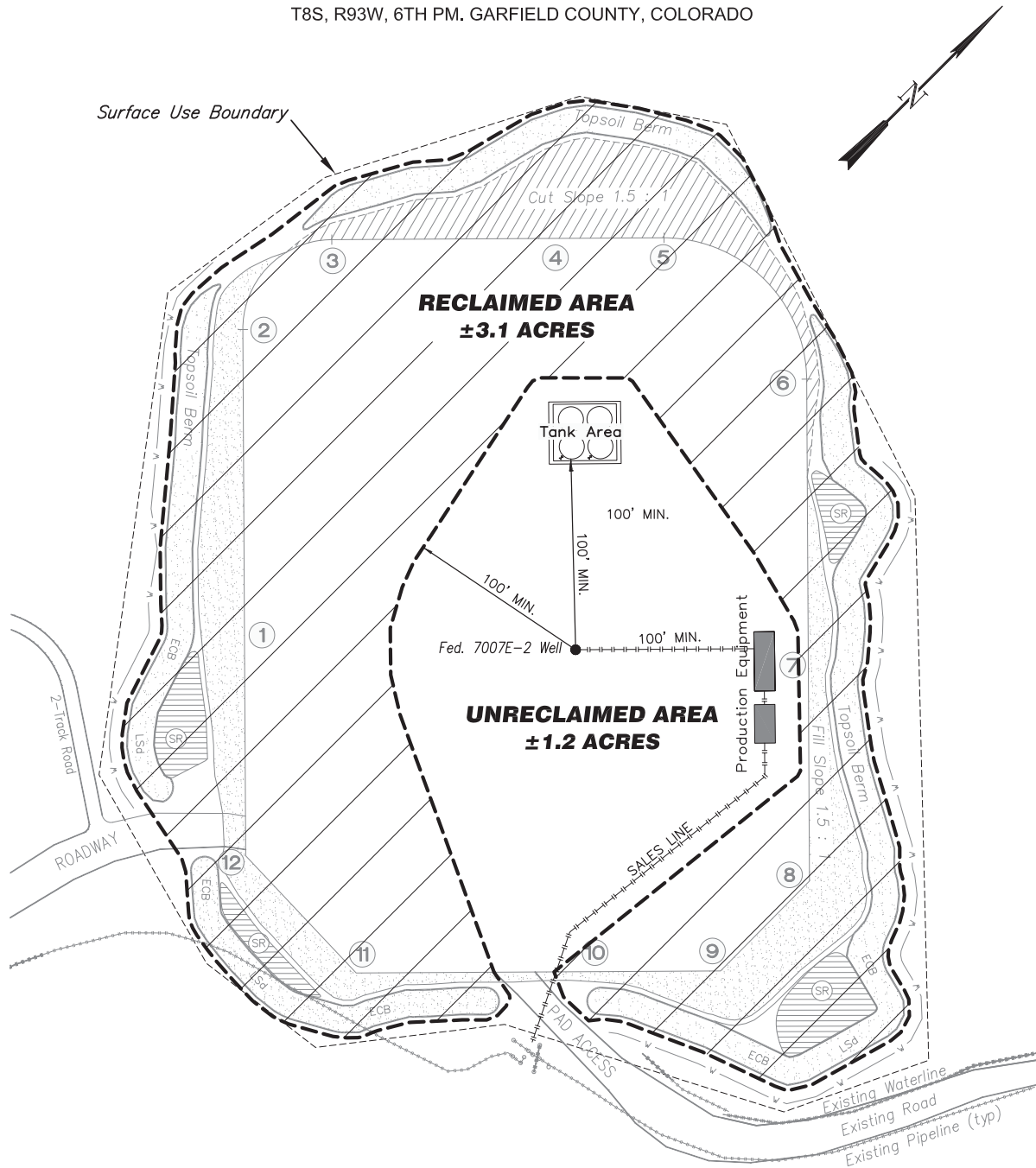


906 Main Street
Evanston, Wyoming 82930
Phone No. (307) 789-4545

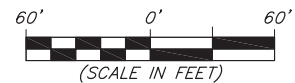


Production Schematic		Scale: 1" = 60'	SHEET 6 OF 10
Project No.	16-04-02	Date Surveyed: 8/31/16	
Date Drawn:	10/19/16	Latest Revision Date: 10/24/16	

ENCANA OIL & GAS (USA) INC.
H2SW WELL PAD
- RECLAMATION PLAN -
 LOCATED IN LOT 2 OF SECTION 2
 T8S, R93W, 6TH PM. GARFIELD COUNTY, COLORADO



ESTIMATED AREAS
 RECLAIMED AREA: 3.1 ACRES
 UNRECLAIMED AREA: 1.2 ACRES
 (PRODUCTION PAD)



906 Main Street
 Evanston, Wyoming 82930
 Phone No. (307) 789-4545

Reclamation Plan		Scale: 1" = 60'	SHEET 6a OF 10
Project No.	16-04-02	Date Surveyed: 8/31/16	
Date Drawn: 10/19/16		Latest Revision Date: 10/24/16	