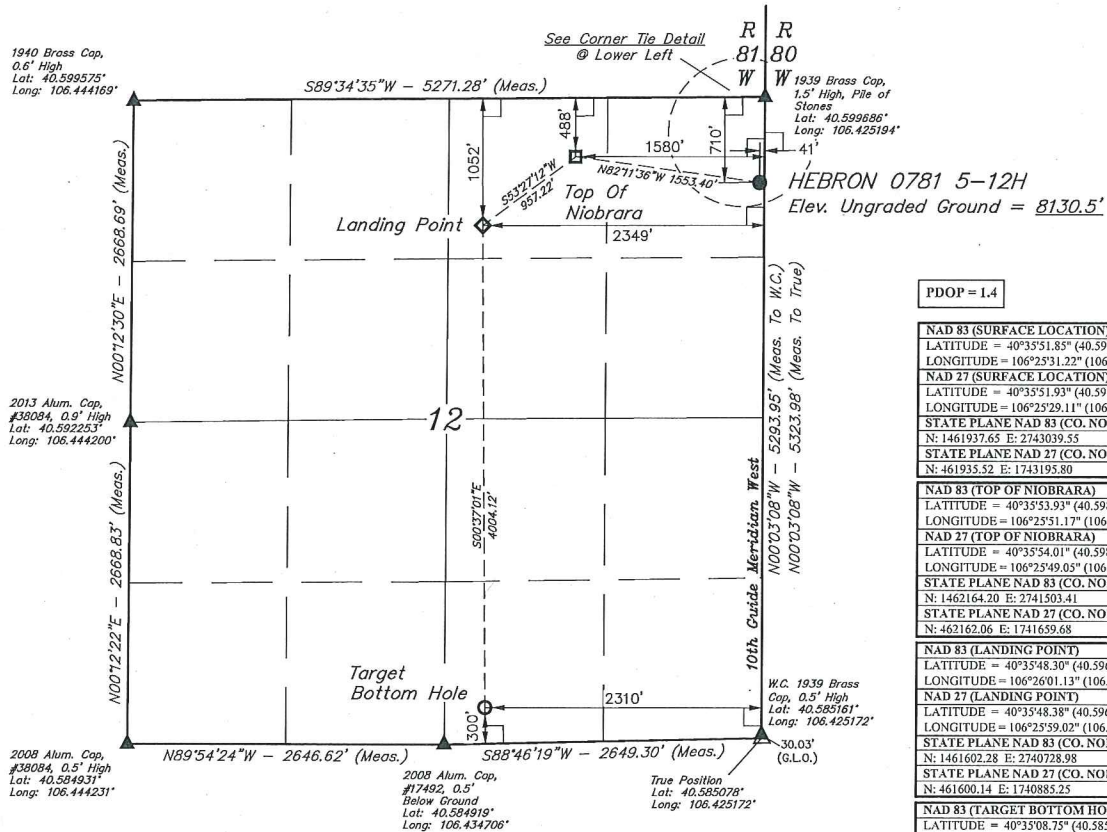


LEGEND:

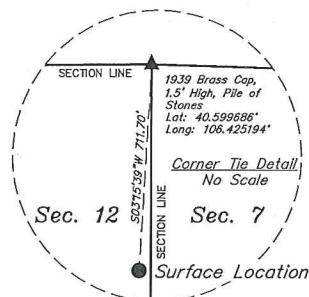
- = 90° SYMBOL
- = PROPOSED WELL HEAD.
- = TOP OF NIOBRARA.
- ◇ = LANDING POINT.
- = TARGET BOTTOM HOLE.
- ▲ = SECTION CORNERS LOCATED (NAD 83)
- △ = SECTION CORNERS RE-ESTABLISHED (Not Set on Ground.) (NAD 83)

T7N, R81W, 6th P.M.



PDOP = 1.4

NAD 83 (SURFACE LOCATION)	
LATITUDE = 40°35'51.85" (40.597736)	
LONGITUDE = 106°25'31.22" (106.425339)	
NAD 27 (SURFACE LOCATION)	
LATITUDE = 40°35'51.93" (40.597758)	
LONGITUDE = 106°25'29.11" (106.424753)	
STATE PLANE NAD 83 (CO. NORTH)	
N: 1461937.65 E: 2743039.55	
STATE PLANE NAD 27 (CO. NORTH)	
N: 461935.52 E: 1743195.80	
NAD 83 (TOP OF NIOBRARA)	
LATITUDE = 40°35'53.93" (40.598314)	
LONGITUDE = 106°25'51.17" (106.430881)	
NAD 27 (TOP OF NIOBRARA)	
LATITUDE = 40°35'54.01" (40.598336)	
LONGITUDE = 106°25'49.05" (106.430292)	
STATE PLANE NAD 83 (CO. NORTH)	
N: 1462164.20 E: 2741503.41	
STATE PLANE NAD 27 (CO. NORTH)	
N: 462162.06 E: 1741659.68	
NAD 83 (LANDING POINT)	
LATITUDE = 40°35'48.30" (40.596750)	
LONGITUDE = 106°26'01.13" (106.433647)	
NAD 27 (LANDING POINT)	
LATITUDE = 40°35'48.38" (40.596772)	
LONGITUDE = 106°25'59.02" (106.433061)	
STATE PLANE NAD 83 (CO. NORTH)	
N: 1461602.28 E: 2740728.98	
STATE PLANE NAD 27 (CO. NORTH)	
N: 461600.14 E: 1740885.25	
NAD 83 (TARGET BOTTOM HOLE)	
LATITUDE = 40°35'08.75" (40.585764)	
LONGITUDE = 106°26'00.55" (106.433486)	
NAD 27 (TARGET BOTTOM HOLE)	
LATITUDE = 40°35'08.83" (40.585786)	
LONGITUDE = 106°25'58.44" (106.432900)	
STATE PLANE NAD 83 (CO. NORTH)	
N: 1457599.83 E: 2740731.37	
STATE PLANE NAD 27 (CO. NORTH)	
N: 457597.66 E: 1740887.68	



BASIS OF BEARINGS
 BASIS OF BEARINGS IS A G.P.S. OBSERVATION
BASIS OF ELEVATION
 SPOT ELEVATION AT THE SOUTHEAST CORNER OF SECTION 29, T7N, R80W, 6th P.M., TAKEN FROM THE COALMONT QUADRANGLE, COLORADO, JACKSON COUNTY 7.5 MINUTE QUAD. (TOPOGRAPHIC MAP) PUBLISHED BY THE UNITED STATES DEPARTMENT OF THE INTERIOR, GEOLOGICAL SURVEY. SAID ELEVATION IS MARKED AS BEING 8156 FEET.



UELS, LLC
 Corporate Office * 85 South 200 East
 Vernal, UT 84078 * (435) 789-1017



CERTIFICATION
 THIS IS TO CERTIFY THAT THE ABOVE IS A TRUE AND CORRECT COPY OF THE NOTES OF ACTUAL SURVEYS MADE BY ME OR UNDER MY SUPERVISION, AND THAT THE SAME ARE TRUE AND CORRECT TO THE BEST OF MY KNOWLEDGE AND BELIEF.
 REGISTERED LAND SURVEYOR
 REGISTRATION NO. 28285
 STATE OF COLORADO 09-30-16

REV: I 09-30-16 M.D. (ADD TOP OF NIOBRARA & LP)

SandRidge Exploration & Production, LLC

HEBRON 0781 5-12H
 NE 1/4 NE 1/4, SECTION 12, T7N, R81W, 6th P.M.
 JACKSON COUNTY, COLORADO

SURVEYED BY	CHAD MEIERS, D.S.	09-01-16	SCALE
DRAWN BY	T.B.	09-08-16	1" = 1000'

WELL LOCATION PLAT