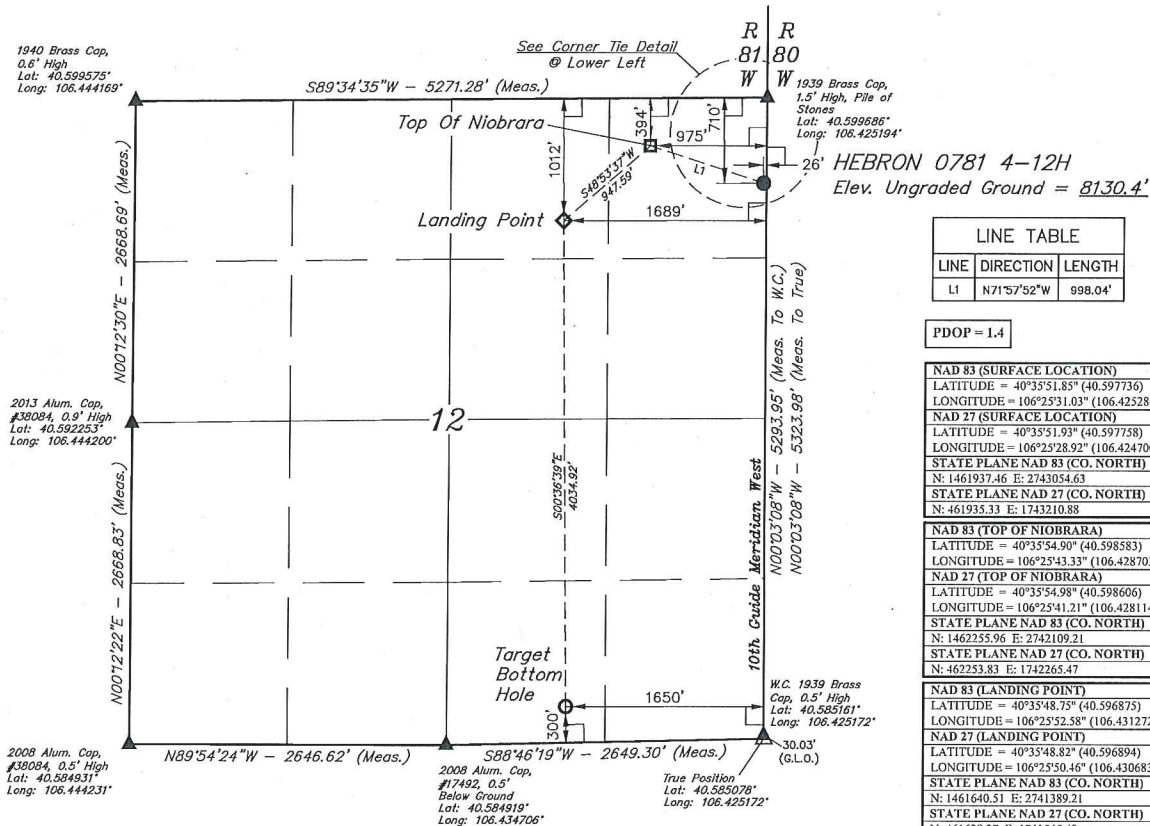


# LEGEND:

- = 90° SYMBOL
- = PROPOSED WELLHEAD.
- = TOP OF NIOBRARA.
- ◆ = LANDING POINT.
- = TARGET BOTTOM HOLE.
- ▲ = SECTION CORNERS LOCATED. (NAD 83)
- △ = SECTION CORNERS RE-ESTABLISHED. (Not Set on Ground.) (NAD 83)

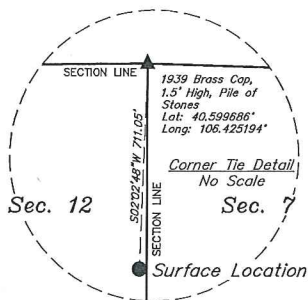
T7N, R81W, 6th P.M.



LINE TABLE		
LINE	DIRECTION	LENGTH
L1	N71°57'52"W	998.04'

PDOP = 1.4

<b>NAD 83 (SURFACE LOCATION)</b>	
LATITUDE = 40°35'51.85" (40.597736)	
LONGITUDE = 106°25'31.03" (106.425286)	
<b>NAD 27 (SURFACE LOCATION)</b>	
LATITUDE = 40°35'51.93" (40.597758)	
LONGITUDE = 106°25'28.92" (106.424700)	
<b>STATE PLANE NAD 83 (CO. NORTH)</b>	
N: 1461937.46 E: 2743054.63	
<b>STATE PLANE NAD 27 (CO. NORTH)</b>	
N: 461935.33 E: 1743210.88	
<b>NAD 83 (TOP OF NIOBRARA)</b>	
LATITUDE = 40°35'54.90" (40.598583)	
LONGITUDE = 106°25'43.33" (106.428703)	
<b>NAD 27 (TOP OF NIOBRARA)</b>	
LATITUDE = 40°35'54.98" (40.598606)	
LONGITUDE = 106°25'41.21" (106.428114)	
<b>STATE PLANE NAD 83 (CO. NORTH)</b>	
N: 1462255.96 E: 2742109.21	
<b>STATE PLANE NAD 27 (CO. NORTH)</b>	
N: 462253.83 E: 1742265.47	
<b>NAD 83 (LANDING POINT)</b>	
LATITUDE = 40°35'48.75" (40.596875)	
LONGITUDE = 106°25'52.58" (106.431272)	
<b>NAD 27 (LANDING POINT)</b>	
LATITUDE = 40°35'48.82" (40.596894)	
LONGITUDE = 106°25'50.46" (106.430683)	
<b>STATE PLANE NAD 83 (CO. NORTH)</b>	
N: 1461640.51 E: 2741389.21	
<b>STATE PLANE NAD 27 (CO. NORTH)</b>	
N: 461638.37 E: 1741545.48	
<b>NAD 83 (TARGET BOTTOM HOLE)</b>	
LATITUDE = 40°35'08.89" (40.585803)	
LONGITUDE = 106°25'52.00" (106.431111)	
<b>NAD 27 (TARGET BOTTOM HOLE)</b>	
LATITUDE = 40°35'08.97" (40.585825)	
LONGITUDE = 106°25'49.89" (106.430525)	
<b>STATE PLANE NAD 83 (CO. NORTH)</b>	
N: 1457607.26 E: 2741391.19	
<b>STATE PLANE NAD 27 (CO. NORTH)</b>	
N: 457605.10 E: 1741547.49	



**BASIS OF BEARINGS**  
BASIS OF BEARINGS IS A G.P.S. OBSERVATION

**BASIS OF ELEVATION**  
SPOT ELEVATION AT THE SOUTHEAST CORNER OF SECTION 29, T7N, R80W, 6th P.M., TAKEN FROM THE COALMONT QUADRANGLE, COLORADO, JACKSON COUNTY 7.5 MINUTE QUAD. (TOPOGRAPHIC MAP) PUBLISHED BY THE UNITED STATES DEPARTMENT OF THE INTERIOR, GEOLOGICAL SURVEY. SAID ELEVATION IS MARKED AS BEING 8156 FEET.



**UELS, LLC**  
Corporate Office \* 85 South 200 East  
Vernal, UT 84078 \* (435) 789-1017



CERTIFICATE OF REGISTRATION  
THIS IS TO CERTIFY THAT THE ABOVE TITLED SURVEY WAS MADE IN ACCORDANCE WITH THE NOTES OF ACTUAL SURVEYS MADE BY ME OR UNDER MY SUPERVISION, AND THAT THE SAME ARE TRUE AND CORRECT TO THE BEST OF MY KNOWLEDGE AND BELIEF.

REGISTERED LAND SURVEYOR  
RECORDATION NO. 28285  
STATE OF UTAH  
JANUARY 16, 2016

REV: 1 09-30-16 M.D. (ADD TOP OF NIOBRARA & L.P.)

**SandRidge Exploration & Production, LLC**

**HEBRON 0781 4-12H**  
NE 1/4 NE 1/4, SECTION 12, T7N, R81W, 6th P.M.  
JACKSON COUNTY, COLORADO

SURVEYED BY	CHAD MEIERS, D.S.	09-01-16	SCALE
DRAWN BY	T.B.	09-08-16	1" = 1000'

**WELL LOCATION PLAT**