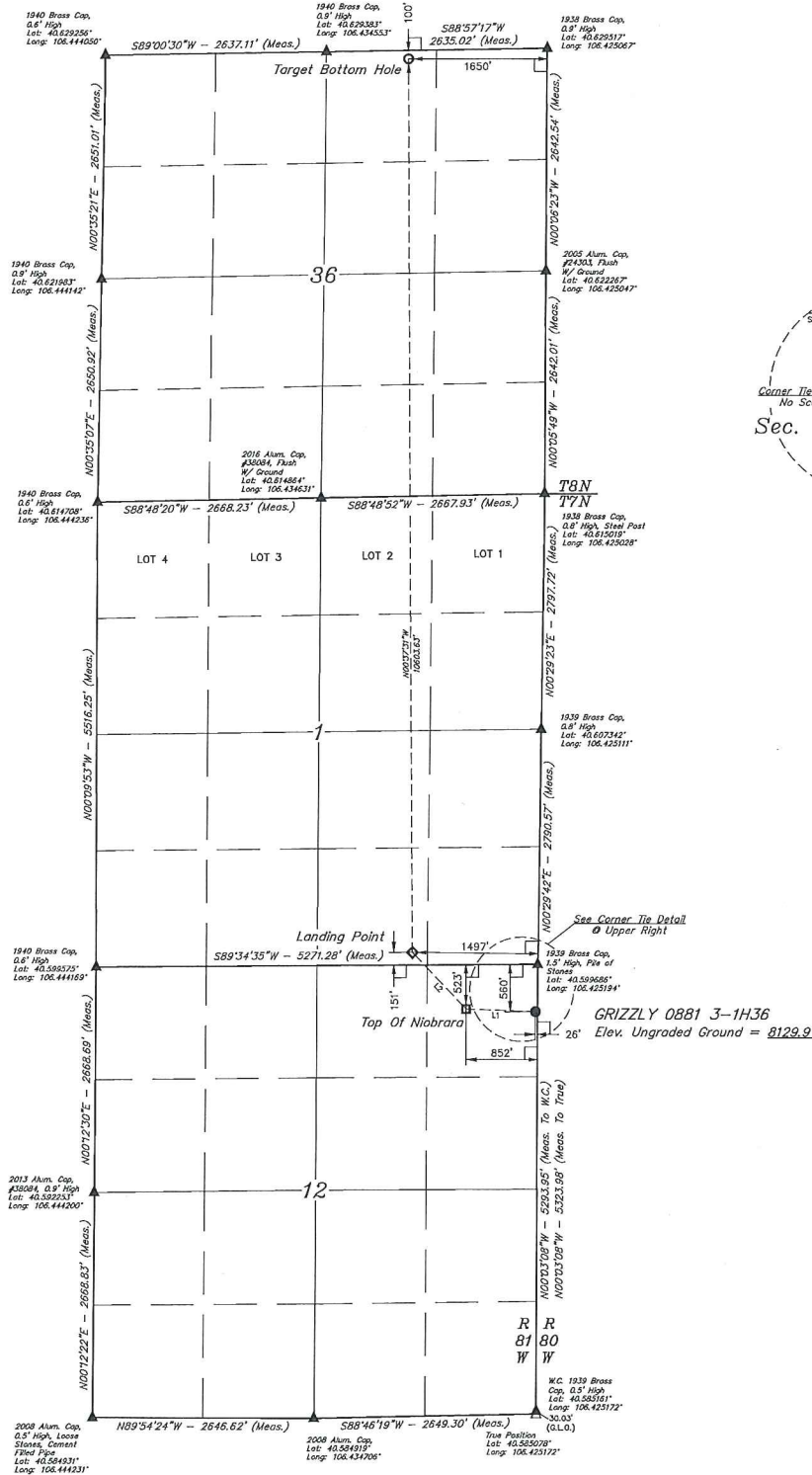
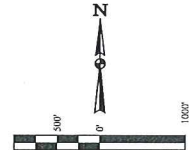
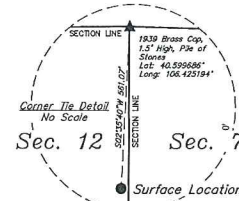


T7N, R81W, 6th P.M.

- LEGEND:**
- 90° SYMBOL
 - PROPOSED WELLHEAD
 - TOP OF NIobrara
 - LANDING POINT
 - TARGET BOTTOM HOLE
 - SECTION CORNERS LOCATED (NAD 83)
 - SECTION CORNERS NOT ESTABLISHED (Not Set on Ground.) (NAD 83)



LINE TABLE		
LINE	DIRECTION	LENGTH
L1	N87°51'02\"W	826.58'
L2	N43°34'33\"W	926.60'



BASIS OF BEARINGS
BASIS OF BEARINGS IS A G.P.S. OBSERVATION

BASIS OF ELEVATION
SPOT ELEVATION AT THE SOUTHEAST CORNER OF SECTION 29, T7N, R80W, 6th P.M., TAKEN FROM THE COALMONT QUADRANGLE, COLORADO, JACKSON COUNTY 7.5 MINUTE QUAD. (TOPOGRAPHIC MAP) PUBLISHED BY THE UNITED STATES DEPARTMENT OF THE INTERIOR, GEOLOGICAL SURVEY. SAID ELEVATION IS MARKED AS BEING 8156 FEET.

FDOP = 1.6

NAD 83 (SURFACE LOCATION)
LATITUDE = 40°35'33.33\"N (40.59147)
LONGITUDE = 106°23'11.03\"W (106.422386)

NAD 27 (SURFACE LOCATION)
LATITUDE = 40°35'33.41\"N (40.59149)
LONGITUDE = 106°23'28.92\"W (106.424700)

STATE PLANE NAD 83 (CO. NORTH)
N: 146303.29 E: 174306.11
STATE PLANE NAD 27 (CO. NORTH)
N: 467085.36 E: 174321.24

NAD 83 (TOP OF NIobrara)
LATITUDE = 40°35'33.64\"N (40.59233)
LONGITUDE = 106°23'14.17\"W (106.42328)

NAD 27 (TOP OF NIobrara)
LATITUDE = 40°35'33.71\"N (40.59233)
LONGITUDE = 106°23'29.22\"W (106.42702)

STATE PLANE NAD 83 (CO. NORTH)
N: 1463126.87 E: 174239.83
STATE PLANE NAD 27 (CO. NORTH)
N: 463124.74 E: 174237.11

NAD 83 (LANDING POINT)
LATITUDE = 40°36'06.24\"N (40.60067)
LONGITUDE = 106°23'30.03\"W (106.430578)

NAD 27 (LANDING POINT)
LATITUDE = 40°36'06.32\"N (40.60069)
LONGITUDE = 106°23'47.97\"W (106.432992)

STATE PLANE NAD 83 (CO. NORTH)
N: 146302.11 E: 174109.56
STATE PLANE NAD 27 (CO. NORTH)
N: 462799.97 E: 174170.21

NAD 83 (TARGET BOTTOM HOLE)
LATITUDE = 40°37'44.97\"N (40.629158)
LONGITUDE = 106°23'17.47\"W (106.431008)

NAD 27 (TARGET BOTTOM HOLE)
LATITUDE = 40°37'44.05\"N (40.629181)
LONGITUDE = 106°23'10.84\"W (106.430419)

STATE PLANE NAD 83 (CO. NORTH)
N: 147340.36 E: 174158.08
STATE PLANE NAD 27 (CO. NORTH)
N: 473399.38 E: 174152.24

CERTIFICATE OF RECORD
THIS IS TO CERTIFY THAT THE ABOVE SURVEY WAS MADE BY THE UNDERSIGNED AND THAT THE SAME ARE TRUE AND CORRECT TO THE BEST OF HIS KNOWLEDGE AND BELIEF.



REV: 1 09-30-16 M.D. (ADD TOP OF NIobrara & LP)

SandRidge Exploration & Production, LLC
GRIZZLY 0881 3-1H36
NE 1/4 NE 1/4, SECTION 12, T7N, R81W, 6th P.M.
JACKSON COUNTY, COLORADO

UELS, LLC
Corporate Office • 85 South 200 East
Vernal, UT 84078 • (435) 789-1017

UINTAH
REGISTERED SURVEYORS

SURVEYED BY: CHAD MEIERS, D.S. 09-01-16
DRAWN BY: T.D. 09-08-16 SCALE: 1\" = 1000'

WELL LOCATION PLAT