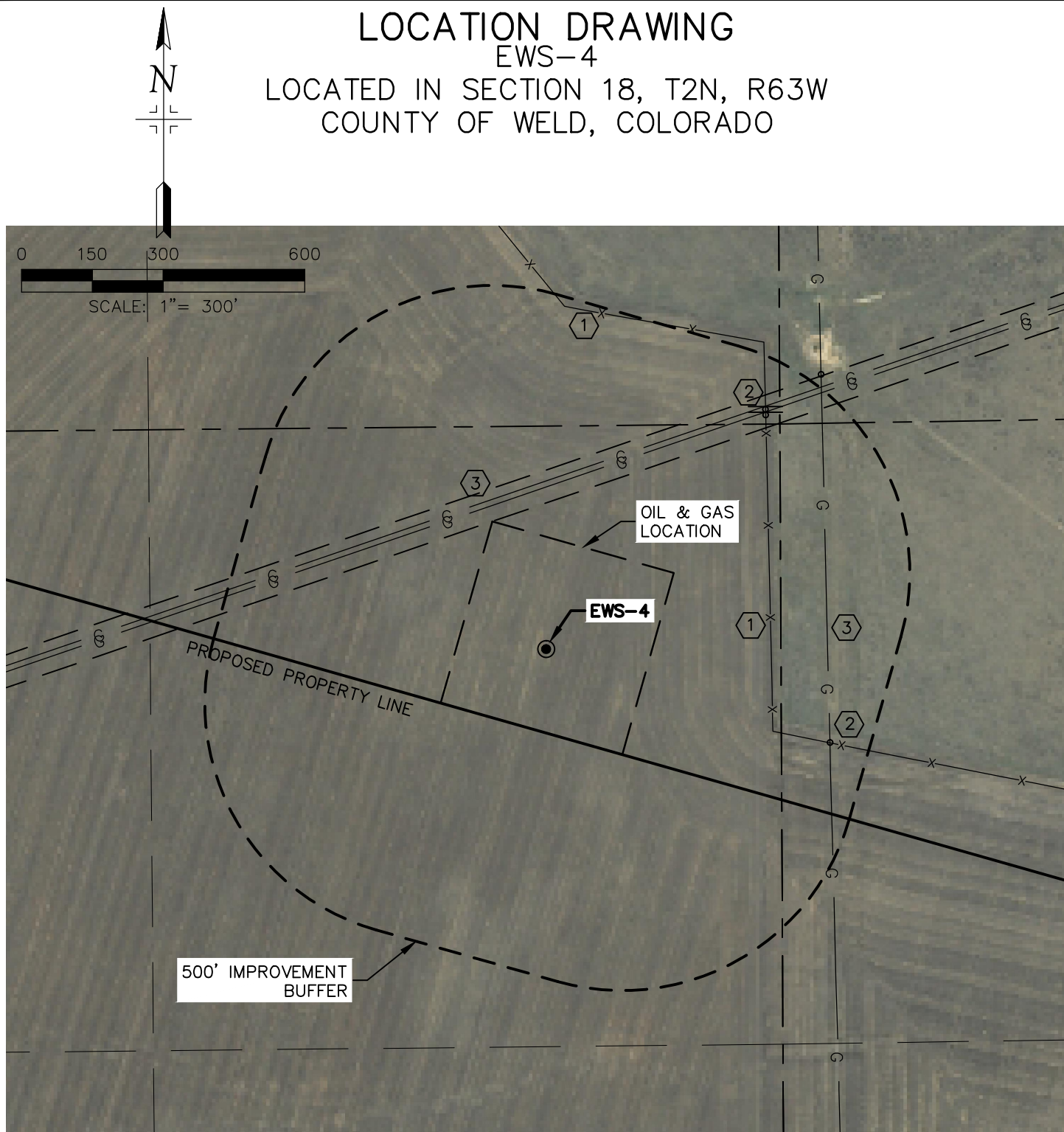


LOCATION DRAWING

EWS-4

LOCATED IN SECTION 18, T2N, R63W
COUNTY OF WELD, COLORADO



ⓑ1 NO BUILDING UNITS WITHIN THE 500' IMPROVEMENT BUFFER

ⓑ1 NO BUILDINGS WITHIN THE 500' IMPROVEMENT BUFFER

① FENCES, E 477', N 721'

② UTILITY MARKER POSTS, NE 686', SE 634'

③ EXISTING UNDERGROUND GAS LINES, NW 326', E 597'

SURFACE USE: CROPLAND