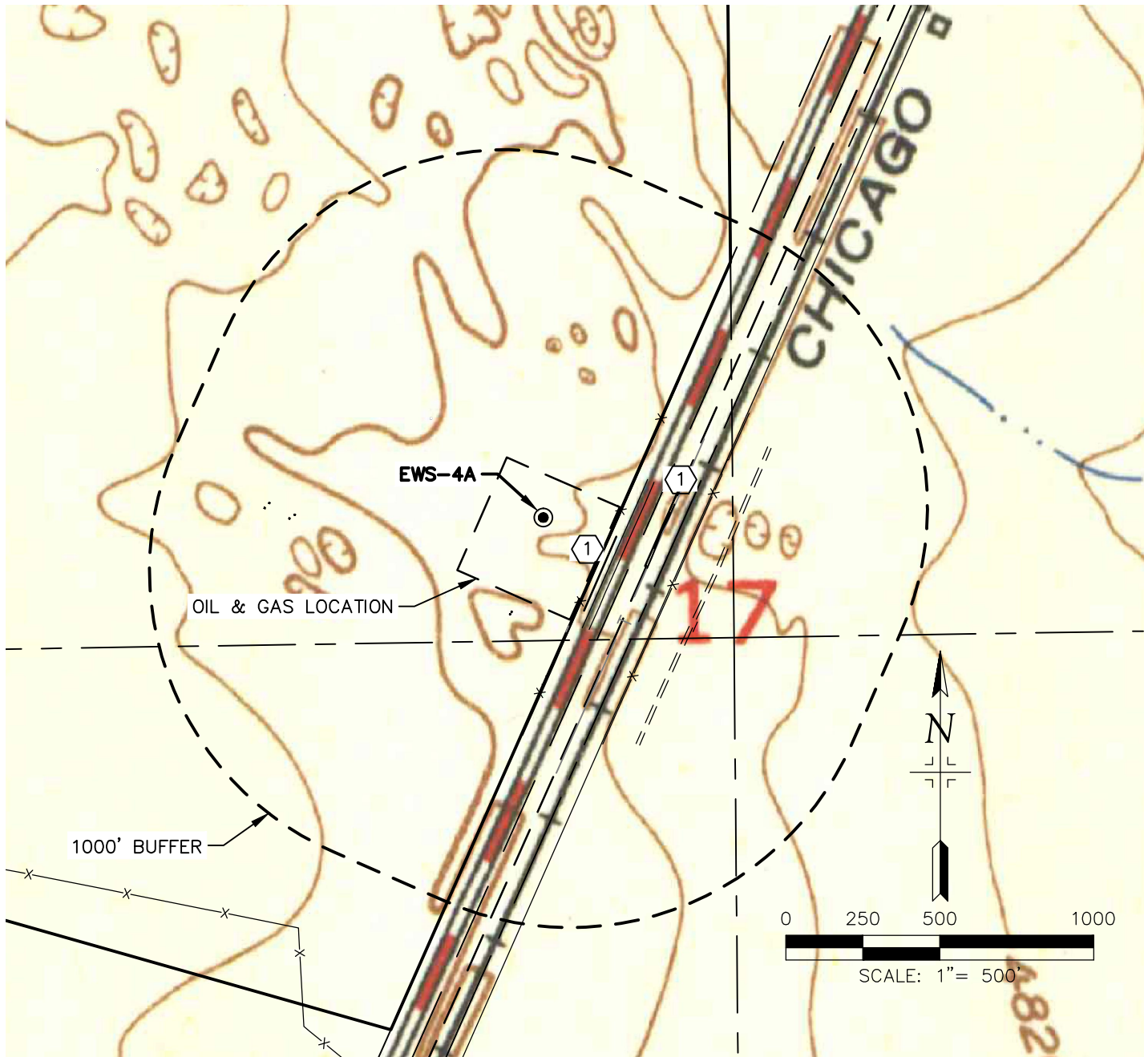


# HYDROLOGY MAP

EWS-4A

LOCATED IN SECTION 17, T2N, R63W  
COUNTY OF WELD, COLORADO



① ROADSIDE DITCHES, 29' SE, 155' E

NOTE: DISTANCES TO THE ROADSIDE DITCHES ARE MEASURED FROM THE EDGE OF THE DISTURBED AREA.