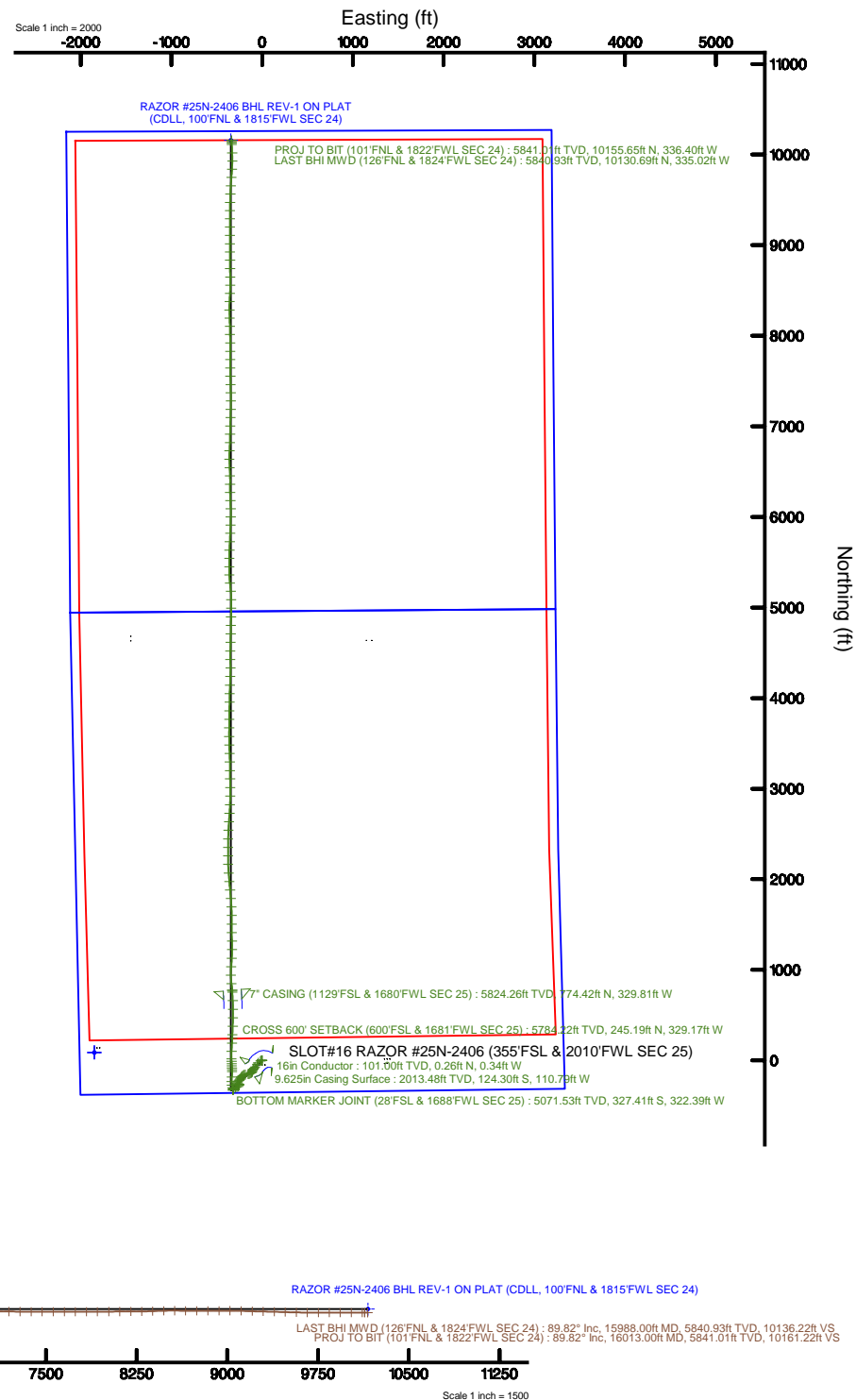


Location:	COLORADO	Slot:	SLOT#16 RAZOR #25N-2406 (355'FSL & 2010'FWL SEC 25)
Field:	WELD COUNTY	Well:	RAZOR #25N-2406
Facility:	SEC.25-T10N-R58W	Wellbore:	RAZOR #25N-2406 PWB

<p>Plot reference wellpath is RAZOR #25N-2406 REV-B-0101P</p> <p>True vertical depths are referenced to UNIT 409 (21") (RKB)</p> <p>Measured depths are referenced to UNIT 409 (21") (RKB)</p> <p>UNIT 409 (21") (RKB) to Mean Sea Level: 4722 feet</p> <p>Mean Sea Level to Mud line (At Slot: SLOT#16 RAZOR #25N-2406 (35FSBL & 2010FWL SEC 25): 0 feet</p> <p>Coordinates are in feet referenced to Slot</p>	<p>Grid System: NAD83 / Lambert Colorado SP, Northern Zone (801), US feet</p> <p>- - Wellpath was transformed from a different geoidic datum</p> <p>North Reference: True north</p> <p>Scale: True distance</p> <p>Depths are in feet</p> <p>Created by: wagnam on 2016-09-12</p> <p>Database: WA_DEN_Denver_Defn</p>
---	---

Facility Name				Grid East (US ft)	Grid North (US ft)	Latitude	Longitude
SEC-25-T0N-R55W				3464569.074	1540014.606	40°48'13.160"N	103°49'18.690"W
Spot	Local N (ft)	Local E (ft)	Grid East (US ft)	Grid North (US ft)	Latitude	Longitude	
SLOT#16 RAZOR #220N-2406 (355FSL & 2010FWL SEC 25)	-87.98	1949.53	3466419.940	1538961.643	40°48'12.290"N	103°48'54.640"W	
UNIT 409 (21) (R98) to Mud line (At Slot: SLOT#16 RAZOR #220N-2406 (355FSL & 2010FWL SEC 25))							4722ft
Mean Sea Level to Mud line (At Slot: SLOT#16 RAZOR #220N-2406 (355FSL & 2010FWL SEC 25))							0ft
UNIT 409 (21) (R98) to Mean Sea Level							4722ft





Actual Wellpath Report

RAZOR #25N-2406 AWP

Page 1 of 9



REFERENCE WELLPATH IDENTIFICATION

Operator	WHITING OIL & GAS CORPORATION	Slot	SLOT#16 RAZOR #25N-2406 (355'FSL & 2010'FWL SEC 25)
Area	COLORADO	Well	RAZOR #25N-2406
Field	WELD COUNTY	Wellbore	RAZOR #25N-2406 AWB
Facility	SEC.25-T10N-R58W		

REPORT SETUP INFORMATION

Projection System	NAD83 / Lambert Colorado SP, Northern Zone (501), US feet	Software System	WellArchitect® 5.0
North Reference	True	User	Wagnjam
Scale	1.000003	Report Generated	9/12/2016 at 5:35:56 PM
Convergence at slot	1.09° East	Database/Source file	WA_DEN_Denver_Defn/RAZOR_#25N-2406_AWP.xml

WELLPATH LOCATION

	Local coordinates		Grid coordinates		Geographic coordinates	
	North[ft]	East[ft]	Easting[US ft]	Northing[US ft]	Latitude	Longitude
Slot Location	-87.98	1849.53	3466419.94	1539961.64	40°48'12.290"N	103°48'54.640"W
Facility Reference Pt			3464569.07	1540014.61	40°48'13.160"N	103°49'18.690"W
Field Reference Pt			3471270.16	1558347.59	40°51'13.010"N	103°47'46.990"W

WELLPATH DATUM

Calculation method	Minimum curvature	UNIT 409 (21') (RKB) to Facility Vertical Datum	4722.00ft
Horizontal Reference Pt	Slot	UNIT 409 (21') (RKB) to Mean Sea Level	4722.00ft
Vertical Reference Pt	UNIT 409 (21') (RKB)	UNIT 409 (21') (RKB) to Mud Line at Slot (SLOT#16 RAZOR #25N-2406 (355'FSL & 2010'FWL SEC 25))	4722.00ft
MD Reference Pt	UNIT 409 (21') (RKB)	Section Origin	N 0.00, E 0.00 ft
Field Vertical Reference	Mean Sea Level	Section Azimuth	358.06°



Actual Wellpath Report

RAZOR #25N-2406 AWP

Page 2 of 9



REFERENCE WELLPATH IDENTIFICATION

Operator	WHITING OIL & GAS CORPORATION	Slot	SLOT#16 RAZOR #25N-2406 (355'FSL & 2010'FWL SEC 25)
Area	COLORADO	Well	RAZOR #25N-2406
Field	WELD COUNTY	Wellbore	RAZOR #25N-2406 AWP
Facility	SEC.25-T10N-R58W		

WELLPATH DATA (171 stations) † = interpolated/extrapolated station

MD [ft]	Inclination [°]	Azimuth [°]	TVD [ft]	Vert Sect [ft]	North [ft]	East [ft]	DLS [°/100ft]	Comments
0.00†	0.000	307.020	0.00	0.00	0.00	0.00	0.00	
21.00	0.000	307.020	21.00	0.00	0.00	0.00	0.00	
147.00	0.960	307.020	146.99	0.66	0.64	-0.84	0.76	
239.00	0.940	302.620	238.98	1.58	1.51	-2.09	0.08	
330.00	2.610	250.080	329.94	1.36	1.20	-4.67	2.39	
422.00	4.470	235.940	421.76	-1.19	-1.52	-9.61	2.22	
512.00	7.430	237.140	511.27	-6.05	-6.64	-17.41	3.29	
788.00	6.520	223.360	785.24	-26.24	-27.72	-43.16	0.69	
971.00	5.870	217.110	967.17	-40.82	-42.74	-55.94	0.51	
1333.00	5.910	215.460	1327.26	-70.00	-72.68	-77.92	0.05	
1516.00	5.710	214.710	1509.32	-84.79	-87.84	-88.57	0.12	
1608.00	5.440	219.750	1600.89	-91.72	-94.95	-93.96	0.61	
1791.00	3.900	206.260	1783.28	-103.68	-107.20	-102.26	1.03	
1976.00	5.400	207.100	1967.67	-116.84	-120.60	-109.01	0.81	
2075.00	4.250	199.310	2066.31	-124.33	-128.20	-112.35	1.33	
2170.00	6.050	231.180	2160.94	-130.62	-134.67	-117.41	3.49	
2264.00	6.270	241.050	2254.40	-135.92	-140.26	-125.76	1.15	
2358.00	6.150	248.570	2347.85	-139.94	-144.58	-134.94	0.87	
2453.00	6.540	251.760	2442.27	-143.15	-148.13	-144.82	0.55	
2547.00	6.390	259.460	2535.68	-145.44	-150.77	-155.05	0.94	
2831.00	6.500	261.350	2817.88	-149.68	-156.07	-186.48	0.08	
2925.00	7.330	242.440	2911.21	-152.90	-159.65	-197.05	2.56	
3020.00	4.800	236.740	3005.67	-157.58	-164.63	-205.75	2.73	
3114.00	6.760	242.980	3099.19	-161.97	-169.31	-213.97	2.19	
3208.00	6.690	225.780	3192.55	-168.00	-175.64	-222.82	2.14	
3303.00	6.700	210.160	3286.91	-176.42	-184.29	-229.57	1.91	
3397.00	6.780	209.320	3380.26	-185.81	-193.87	-235.05	0.14	
3491.00	6.850	211.320	3473.60	-195.24	-203.50	-240.68	0.26	
3586.00	6.470	210.370	3567.96	-204.50	-212.95	-246.33	0.42	
3680.00	6.020	223.440	3661.40	-212.44	-221.10	-252.39	1.58	



Actual Wellpath Report

RAZOR #25N-2406 AWP

Page 3 of 9



REFERENCE WELLPATH IDENTIFICATION

Operator	WHITING OIL & GAS CORPORATION	Slot	SLOT#16 RAZOR #25N-2406 (355'FSL & 2010'FWL SEC 25)
Area	COLORADO	Well	RAZOR #25N-2406
Field	WELD COUNTY	Wellbore	RAZOR #25N-2406 AWB
Facility	SEC.25-T10N-R58W		

WELLPATH DATA (171 stations) † = interpolated/extrapolated station

MD [ft]	Inclination [°]	Azimuth [°]	TVD [ft]	Vert Sect [ft]	North [ft]	East [ft]	DLS [°/100ft]	Comments
3774.00	6.530	232.900	3754.84	-218.98	-227.91	-260.05	1.22	
3868.00	6.820	226.710	3848.21	-225.75	-234.96	-268.37	0.82	
3962.00	7.410	190.410	3941.53	-235.36	-244.75	-273.53	4.74	
4057.00	7.700	127.960	4035.85	-245.44	-254.71	-269.62	8.23	
4151.00	6.690	95.870	4129.15	-250.23	-259.14	-259.20	4.35	
4245.00	6.670	139.890	4222.57	-255.27	-263.88	-250.23	5.32	
4339.00	9.610	218.260	4315.85	-265.58	-274.24	-251.58	11.19	
4433.00	9.720	234.540	4408.54	-275.96	-285.01	-262.90	2.90	
4527.00	11.060	248.050	4501.01	-283.43	-292.99	-277.73	2.95	
4622.00	11.300	254.560	4594.21	-288.72	-298.87	-295.15	1.35	
4715.00	9.390	230.070	4685.73	-295.52	-306.17	-309.76	5.11	
4810.00	5.640	197.300	4779.94	-304.71	-315.61	-317.10	5.85	
4904.00	3.360	203.800	4873.65	-311.55	-322.54	-319.58	2.48	
4998.00	1.840	213.060	4967.55	-315.27	-326.33	-321.52	1.67	
5093.00	0.140	340.390	5062.53	-316.41	-327.49	-322.39	2.03	
5102.00†	0.947	3.000	5071.53	-316.32	-327.41	-322.39	9.10	BOTTOM MARKER JOINT (28'FSL & 1688'FWL SEC 25)
5187.00	8.680	6.360	5156.17	-309.27	-320.32	-321.64	9.10	
5281.00	15.050	335.510	5248.20	-290.94	-302.13	-325.92	9.34	
5376.00	21.260	351.010	5338.48	-262.41	-273.85	-333.74	8.23	
5471.00	30.030	0.280	5424.07	-221.47	-232.97	-336.32	10.13	
5565.00	36.080	5.360	5502.83	-170.45	-181.84	-333.62	7.07	
5660.00	39.090	359.880	5578.13	-112.74	-124.01	-331.07	4.73	
5691.00	41.580	357.400	5601.76	-92.68	-103.95	-331.55	9.56	
5721.00	44.810	356.980	5623.63	-72.15	-83.44	-332.56	10.81	
5754.00	48.710	357.120	5646.23	-48.12	-59.44	-333.80	11.82	
5785.00	52.940	357.100	5665.81	-24.10	-35.44	-335.01	13.65	
5816.00	56.780	357.510	5683.65	1.25	-10.13	-336.20	12.43	
5848.00	60.030	358.500	5700.41	28.50	17.11	-337.14	10.49	
5942.00	69.460	2.250	5740.48	113.32	102.00	-336.48	10.66	
6037.00	73.870	3.260	5770.36	203.17	192.05	-332.14	4.75	



Actual Wellpath Report

RAZOR #25N-2406 AWP

Page 4 of 9



REFERENCE WELLPATH IDENTIFICATION

Operator	WHITING OIL & GAS CORPORATION	Slot	SLOT#16 RAZOR #25N-2406 (355'FSL & 2010'FWL SEC 25)
Area	COLORADO	Well	RAZOR #25N-2406
Field	WELD COUNTY	Wellbore	RAZOR #25N-2406 AWB
Facility	SEC.25-T10N-R58W		

WELLPATH DATA (171 stations) † = interpolated/extrapolated station

MD [ft]	Inclination [°]	Azimuth [°]	TVD [ft]	Vert Sect [ft]	North [ft]	East [ft]	DLS [°/100ft]	Comments
6092.00†	76.930	3.130	5784.22	256.18	245.19	-329.17	5.57	CROSS 600' SETBACK (600'FSL & 1681'FWL SEC 25)
6131.00	79.100	3.040	5792.32	294.18	283.28	-327.12	5.57	
6226.00	83.990	1.500	5806.28	387.86	377.14	-323.40	5.39	
6320.00	89.720	0.590	5811.44	481.55	470.95	-321.70	6.17	
6414.00	87.480	359.830	5813.73	575.45	564.91	-321.35	2.52	
6509.00	86.610	358.040	5818.63	670.31	659.76	-323.11	2.09	
6603.00	87.600	355.810	5823.38	764.17	753.50	-328.15	2.59	
6624.00†	87.606	355.131	5824.26	785.13	774.42	-329.81	3.23	7" CASING (1129'FSL & 1680'FWL SEC 25)
6697.00	87.630	352.770	5827.29	857.87	846.94	-337.49	3.23	
6791.00	87.080	358.120	5831.63	951.64	940.51	-344.95	5.72	
6885.00	89.780	6.360	5834.21	1045.26	1034.31	-341.28	9.22	
6979.00	90.030	3.220	5834.37	1138.60	1127.97	-333.43	3.35	
7074.00	90.060	359.900	5834.29	1233.41	1222.93	-330.84	3.49	
7168.00	90.220	358.300	5834.06	1327.39	1316.91	-332.32	1.71	
7263.00	90.150	359.140	5833.76	1422.39	1411.89	-334.44	0.89	
7357.00	90.250	0.410	5833.43	1516.34	1505.88	-334.81	1.36	
7451.00	90.250	359.220	5833.02	1610.30	1599.88	-335.11	1.27	
7545.00	90.280	357.310	5832.58	1704.29	1693.83	-337.96	2.03	
7639.00	89.720	354.920	5832.58	1798.23	1787.61	-344.33	2.61	
7733.00	89.630	354.870	5833.12	1892.08	1881.23	-352.69	0.11	
7828.00	89.690	355.260	5833.68	1986.95	1975.88	-360.86	0.42	
7922.00	89.630	355.740	5834.24	2080.85	2069.59	-368.24	0.51	
8016.00	89.720	357.460	5834.77	2174.82	2163.42	-373.81	1.83	
8110.00	89.750	0.710	5835.21	2268.79	2257.39	-375.31	3.46	
8205.00	89.880	0.290	5835.51	2363.70	2352.39	-374.48	0.46	
8299.00	89.780	1.030	5835.79	2457.61	2446.38	-373.40	0.79	
8393.00	89.880	2.260	5836.07	2551.42	2540.34	-370.70	1.31	
8487.00	89.850	4.090	5836.29	2645.04	2634.19	-365.50	1.95	
8582.00	90.120	3.530	5836.32	2739.56	2728.98	-359.18	0.65	
8676.00	90.710	2.600	5835.64	2833.20	2822.84	-354.16	1.17	



Actual Wellpath Report

RAZOR #25N-2406 AWP

Page 5 of 9



REFERENCE WELLPATH IDENTIFICATION

Operator	WHITING OIL & GAS CORPORATION	Slot	SLOT#16 RAZOR #25N-2406 (355'FSL & 2010'FWL SEC 25)
Area	COLORADO	Well	RAZOR #25N-2406
Field	WELD COUNTY	Wellbore	RAZOR #25N-2406 AWB
Facility	SEC.25-T10N-R58W		

WELLPATH DATA (171 stations)

MD [ft]	Inclination [°]	Azimuth [°]	TVD [ft]	Vert Sect [ft]	North [ft]	East [ft]	DLS [°/100ft]	Comments
8771.00	90.920	0.750	5834.29	2928.00	2917.79	-351.38	1.96	
8865.00	89.880	358.730	5833.63	3021.95	3011.78	-351.81	2.42	
8960.00	90.310	359.820	5833.47	3116.93	3106.77	-353.01	1.23	
9053.00	90.120	359.170	5833.12	3209.90	3199.76	-353.83	0.73	
9148.00	90.280	358.400	5832.79	3304.89	3294.74	-355.84	0.83	
9242.00	90.340	358.090	5832.28	3398.89	3388.70	-358.72	0.34	
9336.00	90.280	358.600	5831.77	3492.88	3482.65	-361.44	0.55	
9430.00	90.220	359.630	5831.36	3586.87	3576.64	-362.89	1.10	
9525.00	90.150	0.620	5831.06	3681.80	3671.64	-362.68	1.04	
9619.00	90.280	0.200	5830.71	3775.72	3765.64	-362.01	0.47	
9713.00	91.630	1.140	5829.14	3869.61	3859.61	-360.91	1.75	
9808.00	91.600	1.210	5826.46	3964.43	3954.56	-358.96	0.08	
9903.00	90.400	1.380	5824.80	4059.26	4049.51	-356.82	1.28	
9997.00	90.430	2.430	5824.12	4153.05	4143.46	-353.69	1.12	
10091.00	90.650	1.950	5823.24	4246.80	4237.39	-350.10	0.56	
10186.00	90.550	359.280	5822.24	4341.69	4332.37	-349.08	2.81	
10280.00	90.460	359.240	5821.41	4435.67	4426.36	-350.30	0.10	
10374.00	90.430	1.040	5820.68	4529.60	4520.35	-350.07	1.92	
10468.00	89.850	1.190	5820.45	4623.47	4614.33	-348.24	0.64	
10562.00	89.910	1.660	5820.65	4717.30	4708.30	-345.90	0.50	
10657.00	90.220	0.990	5820.54	4812.15	4803.27	-343.70	0.78	
10750.00	90.220	0.410	5820.19	4905.05	4896.27	-342.57	0.62	
10845.00	90.280	0.530	5819.77	4999.96	4991.26	-341.79	0.14	
10940.00	90.430	0.380	5819.18	5094.88	5086.26	-341.03	0.22	
11032.00	90.180	354.150	5818.69	5186.82	5178.11	-345.42	6.78	
11122.00	90.430	354.210	5818.21	5276.62	5267.64	-354.55	0.29	
11214.00	89.970	358.280	5817.89	5368.55	5359.42	-360.57	4.45	
11305.00	87.690	0.190	5819.75	5459.50	5450.39	-361.79	3.27	
11397.00	87.910	0.430	5823.28	5551.36	5542.32	-361.29	0.35	
11489.00	87.910	1.580	5826.64	5643.18	5634.24	-359.68	1.25	



Actual Wellpath Report

RAZOR #25N-2406 AWP

Page 6 of 9



REFERENCE WELLPATH IDENTIFICATION

Operator	WHITING OIL & GAS CORPORATION	Slot	SLOT#16 RAZOR #25N-2406 (355'FSL & 2010'FWL SEC 25)
Area	COLORADO	Well	RAZOR #25N-2406
Field	WELD COUNTY	Wellbore	RAZOR #25N-2406 AWB
Facility	SEC.25-T10N-R58W		

WELLPATH DATA (171 stations)

MD [ft]	Inclination [°]	Azimuth [°]	TVD [ft]	Vert Sect [ft]	North [ft]	East [ft]	DLS [°/100ft]	Comments
11581.00	89.970	2.830	5828.34	5734.92	5726.15	-356.14	2.62	
11673.00	87.600	2.550	5830.29	5826.59	5818.02	-351.82	2.59	
11764.00	87.750	1.870	5833.98	5917.28	5908.88	-348.31	0.76	
11854.00	90.150	0.850	5835.63	6007.10	5998.83	-346.18	2.90	
11944.00	90.860	359.250	5834.84	6097.04	6088.82	-346.10	1.94	
12035.00	89.080	356.290	5834.88	6188.03	6179.74	-349.64	3.80	
12126.00	91.230	359.240	5834.64	6279.01	6270.65	-353.19	4.01	
12216.00	90.000	0.900	5833.67	6368.95	6360.64	-353.08	2.30	
12308.00	90.250	358.350	5833.47	6460.90	6452.63	-353.68	2.79	
12400.00	90.030	357.410	5833.25	6552.90	6544.57	-357.08	1.05	
12492.00	90.030	358.670	5833.20	6644.90	6636.51	-360.23	1.37	
12584.00	90.060	2.440	5833.13	6736.80	6728.49	-359.34	4.10	
12676.00	90.090	2.430	5833.01	6828.53	6820.41	-355.43	0.03	
12768.00	90.030	0.600	5832.91	6920.36	6912.37	-353.00	1.99	
12860.00	90.250	1.610	5832.68	7012.23	7004.36	-351.22	1.12	
12951.00	90.000	1.700	5832.49	7103.05	7095.32	-348.60	0.29	
13043.00	89.940	1.540	5832.53	7194.87	7187.28	-345.99	0.19	
13135.00	89.720	359.740	5832.81	7286.77	7279.27	-344.97	1.97	
13226.00	89.910	358.830	5833.10	7377.75	7370.26	-346.10	1.02	
13317.00	89.850	358.810	5833.29	7468.74	7461.24	-347.98	0.07	
13409.00	89.720	358.650	5833.64	7560.73	7553.22	-350.02	0.22	
13501.00	89.910	359.480	5833.93	7652.72	7645.21	-351.52	0.93	
13592.00	89.970	0.890	5834.03	7743.65	7736.20	-351.22	1.55	
13684.00	90.150	0.240	5833.93	7835.57	7828.20	-350.32	0.73	
13775.00	90.710	358.650	5833.25	7926.53	7919.19	-351.20	1.85	
13868.00	89.970	358.570	5832.70	8019.53	8012.16	-353.45	0.80	
13960.00	90.340	358.820	5832.45	8111.52	8104.13	-355.55	0.49	
14051.00	91.110	358.410	5831.30	8202.51	8195.10	-357.75	0.96	
14141.00	89.880	358.910	5830.52	8292.50	8285.07	-359.85	1.48	
14232.00	92.590	2.480	5828.56	8383.36	8376.02	-358.75	4.92	



Actual Wellpath Report

RAZOR #25N-2406 AWP

Page 7 of 9



REFERENCE WELLPATH IDENTIFICATION

Operator	WHITING OIL & GAS CORPORATION	Slot	SLOT#16 RAZOR #25N-2406 (355'FSL & 2010'FWL SEC 25)
Area	COLORADO	Well	RAZOR #25N-2406
Field	WELD COUNTY	Wellbore	RAZOR #25N-2406 AWB
Facility	SEC.25-T10N-R58W		

WELLPATH DATA (171 stations)

MD [ft]	Inclination [°]	Azimuth [°]	TVD [ft]	Vert Sect [ft]	North [ft]	East [ft]	DLS [°/100ft]	Comments
14323.00	91.140	3.030	5825.60	8474.00	8466.86	-354.38	1.70	
14414.00	89.720	0.300	5824.91	8564.81	8557.81	-351.74	3.38	
14505.00	89.540	358.960	5825.50	8655.77	8648.80	-352.32	1.49	
14597.00	90.030	0.130	5825.85	8747.74	8740.80	-353.05	1.38	
14689.00	90.120	359.550	5825.73	8839.69	8832.80	-353.31	0.64	
14780.00	90.030	359.940	5825.61	8930.65	8923.80	-353.72	0.44	
14872.00	90.250	0.180	5825.38	9022.60	9015.80	-353.62	0.35	
14964.00	88.280	0.070	5826.56	9114.53	9107.78	-353.42	2.14	
15056.00	88.030	359.910	5829.52	9206.43	9199.74	-353.43	0.32	
15147.00	88.920	359.300	5831.95	9297.36	9290.70	-354.06	1.19	
15238.00	88.310	0.070	5834.15	9388.29	9381.67	-354.56	1.08	
15329.00	88.180	1.630	5836.93	9479.14	9472.61	-353.21	1.72	
15421.00	88.430	2.730	5839.65	9570.86	9564.51	-349.71	1.23	
15512.00	90.120	2.690	5840.81	9661.55	9655.39	-345.41	1.86	
15604.00	89.880	5.470	5840.81	9753.04	9747.15	-338.87	3.03	
15695.00	90.030	3.420	5840.88	9843.47	9837.87	-331.82	2.26	
15785.00	89.820	0.340	5840.99	9933.26	9927.81	-328.86	3.43	
15876.00	90.150	358.160	5841.02	10024.23	10018.80	-330.05	2.42	
15968.00	90.000	357.000	5840.90	10116.23	10110.72	-333.94	1.27	
15988.00	89.820	356.820	5840.93	10136.22	10130.69	-335.02	1.27	LAST BHI MWD (126'FNL & 1824'FWL SEC 24)
16013.00	89.820	356.820	5841.01	10161.22	10155.65	-336.40	0.00	PROJ TO BIT (101'FNL & 1822'FWL SEC 24)



Actual Wellpath Report

RAZOR #25N-2406 AWP

Page 8 of 9



REFERENCE WELLPATH IDENTIFICATION

Operator	WHITING OIL & GAS CORPORATION	Slot	SLOT#16 RAZOR #25N-2406 (355'FSL & 2010'FWL SEC 25)
Area	COLORADO	Well	RAZOR #25N-2406
Field	WELD COUNTY	Wellbore	RAZOR #25N-2406 AWB
Facility	SEC.25-T10N-R58W		

HOLE & CASING SECTIONS - Ref Wellbore: RAZOR #25N-2406 AWB Ref Wellpath: RAZOR #25N-2406 AWP

String/Diameter	Start MD [ft]	End MD [ft]	Interval [ft]	Start TVD [ft]	End TVD [ft]	Start N/S [ft]	Start E/W [ft]	End N/S [ft]	End E/W [ft]
16in Conductor	21.00	101.00	80.00	21.00	101.00	0.00	0.00	0.26	-0.34
13.5in Open Hole	21.00	1976.00	1955.00	21.00	1967.67	0.00	0.00	-120.60	-109.01
9.625in Casing Surface	21.00	2022.00	2001.00	21.00	2013.48	0.00	0.00	-124.30	-110.79
8.75in Open Hole	1976.00	10468.00	8492.00	1967.67	5820.45	-120.60	-109.01	4614.33	-348.24
7in Casing Intermediate	21.00	6624.00	6603.00	21.00	5824.26	0.00	0.00	774.42	-329.81

TARGETS

Name	TVD [ft]	North [ft]	East [ft]	Grid East [US ft]	Grid North [US ft]	Latitude	Longitude	Shape
RAZOR #25M PAD SECTION 24	6.00	88.12	-1849.52	3464569.07	1540014.61	40°48'13.160"N	103°49'18.690"W	polygon
RAZOR #25M PAD SECTION 25	6.00	88.12	-1849.52	3464569.07	1540014.61	40°48'13.160"N	103°49'18.690"W	polygon
RAZOR #25M PAD HARDLINES 100' N/E/W & 600' S	5723.00	88.12	-1849.52	3464569.07	1540014.61	40°48'13.160"N	103°49'18.690"W	polygon
RAZOR #25N-2406 BHL REV-1 ON PLAT (CDLL, 100'FNL & 1815'FWL SEC 24)	5812.00	10156.97	-343.62	3465883.41	1550110.27	40°49'52.650"N	103°48'59.110"W	point

WELLPATH COMPOSITION - Ref Wellbore: RAZOR #25N-2406 AWB Ref Wellpath: RAZOR #25N-2406 AWP

Start MD [ft]	End MD [ft]	Positional Uncertainty Model	Log Name/Comment	Wellbore
21.00	1976.00	Custom BHI NaviTrak (IFR1, Standard Rotating, SAG) (Rockies 0.03Gt model)	BHI NAVITRAK MWD, ROCKIES GT, MAGCORR SAG & IFR <147-1976>	RAZOR #25N-2406 AWB
1976.00	15988.00	Custom BHI AutoTrak Curve (Axial Corr, IFR1, Short spacing) (Rockies 0.03Gt model)	BHI AUTOTRAK CURVE SHORT, ROCKIES GT, SURCON IFR & SAG <2075-15988>	RAZOR #25N-2406 AWB
15988.00	16013.00	Blind Drilling (std)	Projection to bit	RAZOR #25N-2406 AWB



Actual Wellpath Report

RAZOR #25N-2406 AWP

Page 9 of 9



REFERENCE WELLPATH IDENTIFICATION

Operator	WHITING OIL & GAS CORPORATION	Slot	SLOT#16 RAZOR #25N-2406 (355'FSL & 2010'FWL SEC 25)
Area	COLORADO	Well	RAZOR #25N-2406
Field	WELD COUNTY	Wellbore	RAZOR #25N-2406 AWB
Facility	SEC.25-T10N-R58W		

WELLPATH COMMENTS

MD [ft]	Inclination [°]	Azimuth [°]	TVD [ft]	Comment
5102.00	0.947	3.000	5071.53	BOTTOM MARKER JOINT (28'FSL & 1688'FWL SEC 25)
6092.00	76.930	3.130	5784.22	CROSS 600' SETBACK (600'FSL & 1681'FWL SEC 25)
6624.00	87.606	355.131	5824.26	7" CASING (1129'FSL & 1680'FWL SEC 25)
15988.00	89.820	356.820	5840.93	LAST BHI MWD (126'FNL & 1824'FWL SEC 24)
16013.00	89.820	356.820	5841.01	PROJ TO BIT (101'FNL & 1822'FWL SEC 24)