

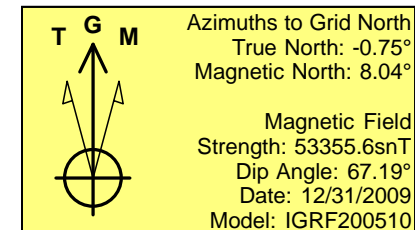
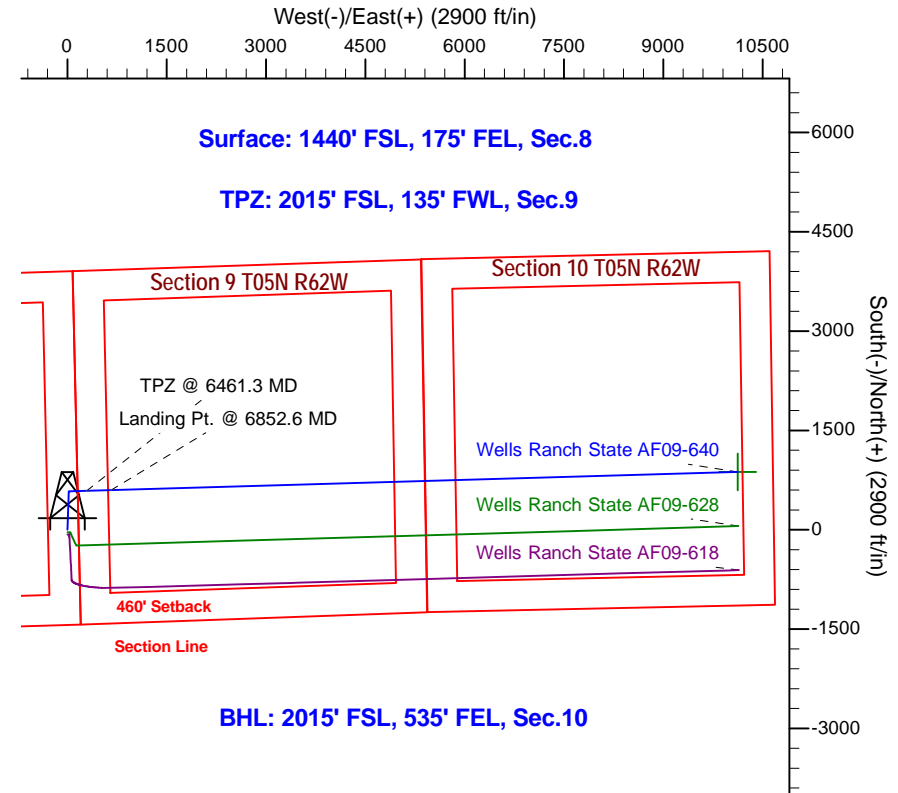
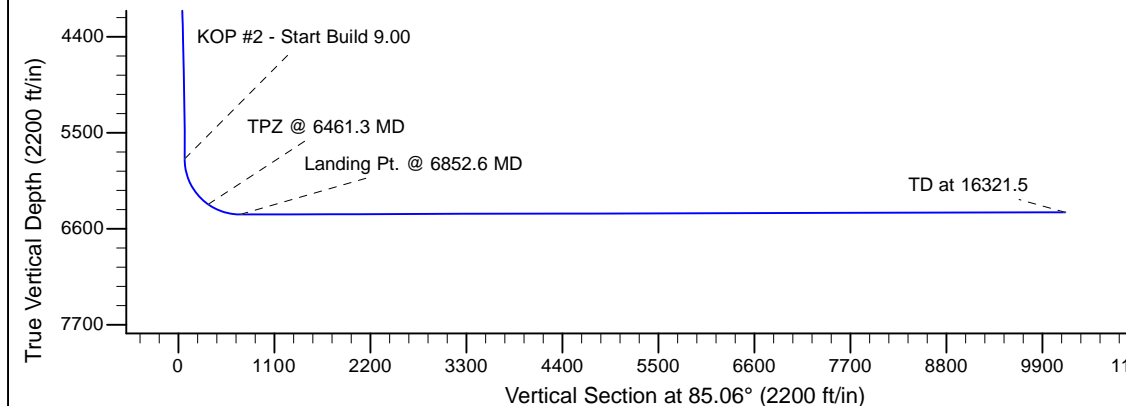
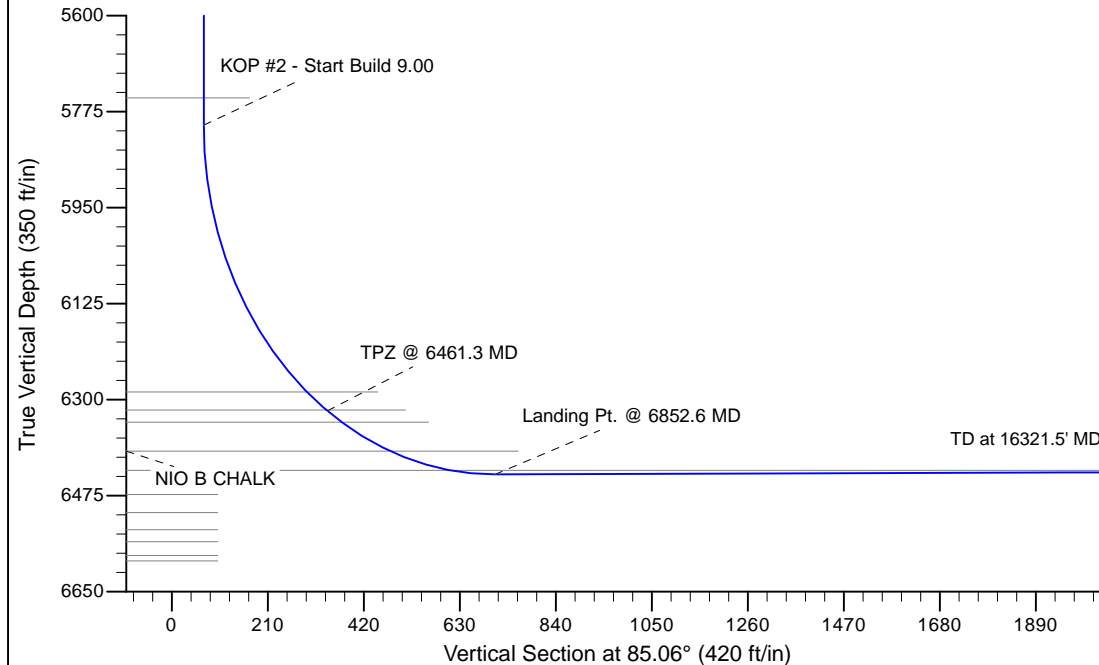
Project: Wattenberg Field  
 Site: AF (Section 8-T05N-R62W) Weld County, Co  
 Well: Wells Ranch State AF09-640  
 Wellbore: Original Drilling  
 Design: APD - Rev 1

# Northern Region Drilling - Working

Geodetic System: US State Plane 1983  
 Datum: North American Datum 1983  
 Ellipsoid: GRS 1980  
 Zone: Colorado Northern Zone  
 System Datum: Mean Sea Level

## SECTION DETAILS

Sec	MD	Inc	Azi	TVD	+N/-S	+E/-W	Dleg	TFace	VSec	Target
1	0.0	0.00	0.00	0.0	0.0	0.0	0.00	0.00	0.0	
2	1900.0	0.00	0.00	1900.0	0.0	0.0	0.00	0.00	0.0	
3	2436.6	10.73	1.97	2433.5	50.1	1.7	2.00	1.97	6.0	
4	5014.7	10.73	1.97	4966.5	529.9	18.3	0.00	0.00	63.8	
5	5551.4	0.00	0.00	5500.0	580.0	20.0	2.00	180.00	69.8	
6	5850.9	0.00	0.00	5799.6	580.0	20.0	0.00	0.00	69.8	
7	6852.6	90.15	88.33	6436.2	598.6	658.0	9.00	88.33	707.1	
8	16321.5	90.15	88.33	6411.4	874.3	10122.9	0.00	0.00	10160.6	Wells Ranch State AF09-640 BHL 2015'FSL, 535'FEL



WELL DETAILS: Wells Ranch State AF09-640					
Ground Level: 4713.0					
0.0	0.0	Northing	Easting	Latitude	Longitude
		1394613.73	3323481.90	40.410800	-104.338310
Plan: APD - Rev 1 (Wells Ranch State AF09-640/Original Drilling)					
Created By: Shailey Jewell			Date: 15:20, October 17 2016		
OK to submit with 2A as per Noble Drilling					
10/17/2016 3:25					