

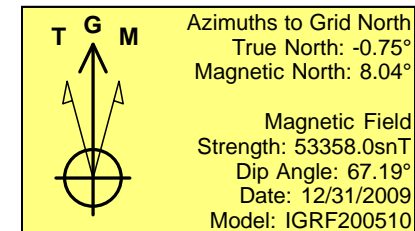
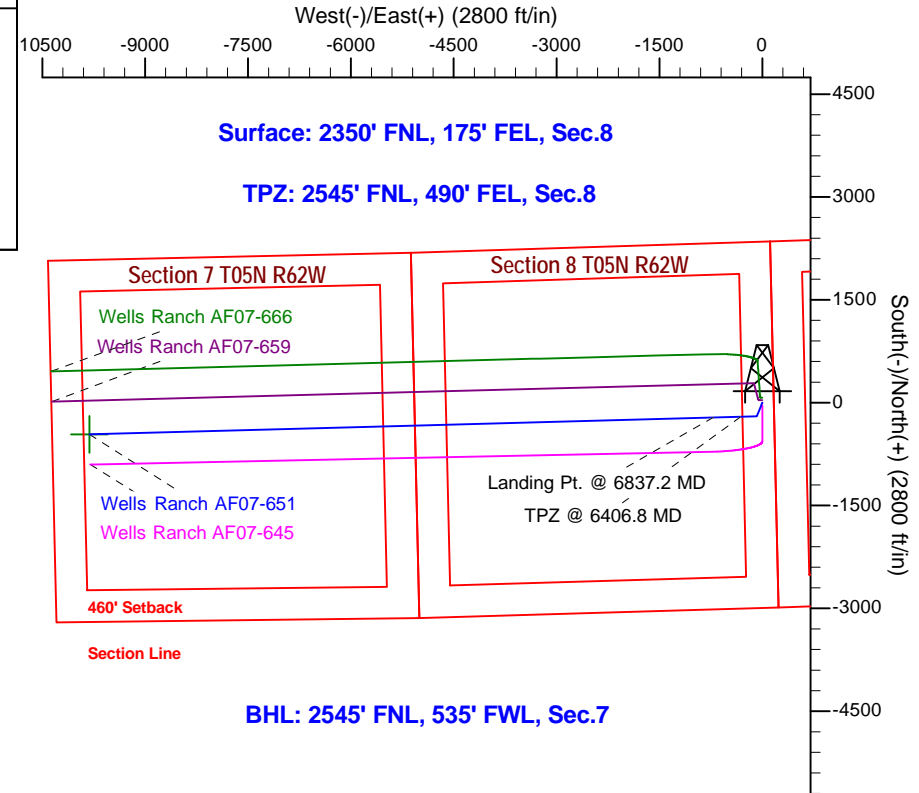
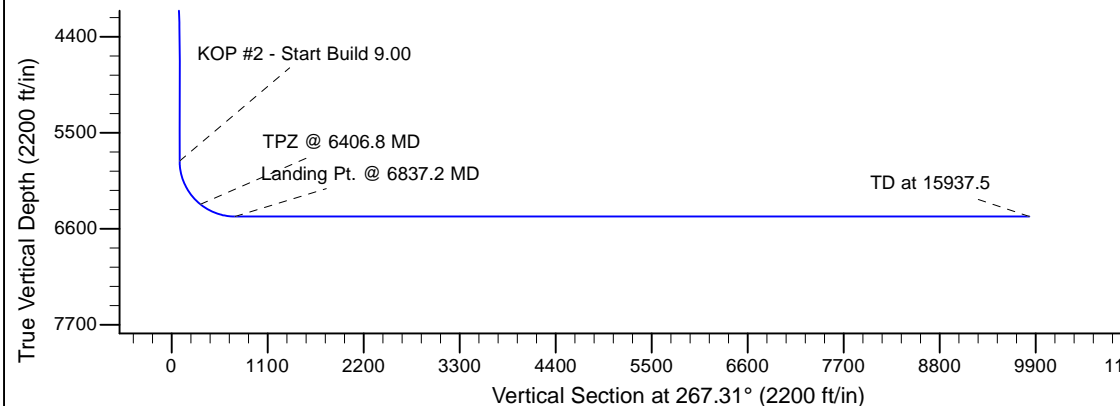
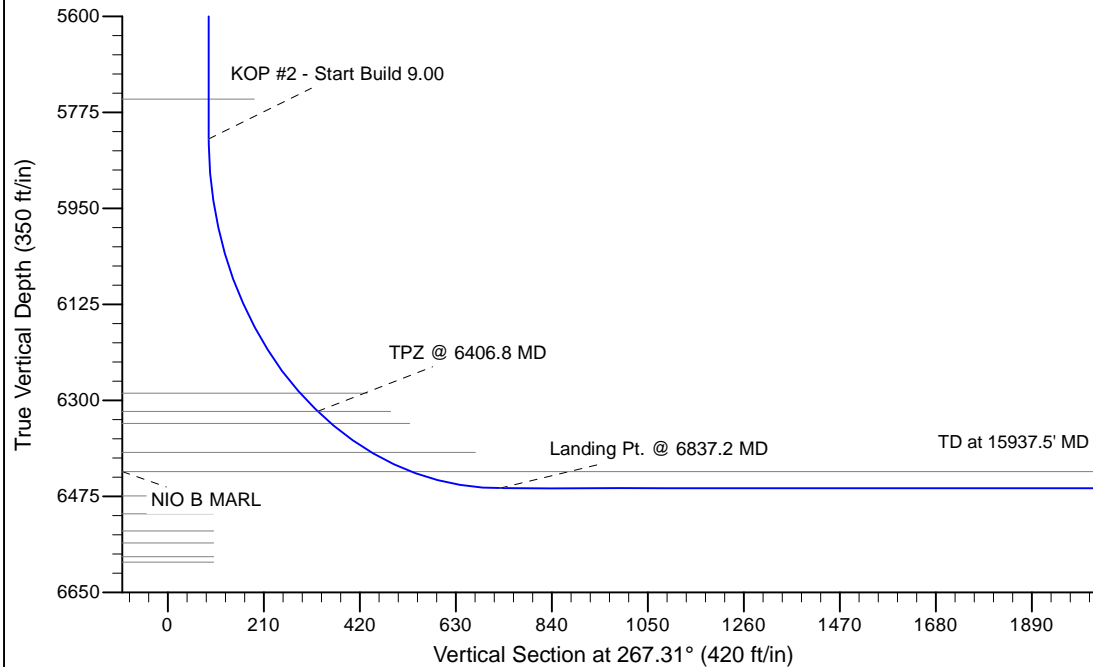
Project: Wattenberg Field  
 Site: AF (Section 8-T05N-R62W) Weld County, Co  
 Well: Wells Ranch AF07-651  
 Wellbore: Original Drilling  
 Design: APD - Rev 1

# Northern Region Drilling - Working

Geodetic System: US State Plane 1983  
 Datum: North American Datum 1983  
 Ellipsoid: GRS 1980  
 Zone: Colorado Northern Zone  
 System Datum: Mean Sea Level

## SECTION DETAILS

Sec	MD	Inc	Azi	TVD	+N/-S	+E/-W	Dleg	TFace	VSec	Target
1	0.0	0.00	0.00	0.0	0.0	0.0	0.00	0.00	0.0	
2	2500.0	0.00	0.00	2500.0	0.0	0.0	0.00	0.00	0.0	
3	2901.2	8.02	201.80	2899.9	-26.0	-10.4	2.00	201.80	11.6	
4	4042.6	8.02	201.80	4030.1	-174.0	-69.6	0.00	0.00	77.7	
5	4443.8	0.00	0.00	4430.0	-200.0	-80.0	2.00	180.00	89.3	
6	5837.2	0.00	0.00	5823.4	-200.0	-80.0	0.00	0.00	89.3	
7	6837.2	90.00	268.46	6460.0	-217.1	-716.4	9.00	268.46	725.8	
8	15937.5	90.00	268.46	6460.0	-461.8	-9813.4	0.00	0.00	9824.3	Wells Ranch AF07-651 BHL 2545'FNL, 535'FWL



WELL DETAILS: Wells Ranch AF07-651					
Ground Level:4704.0					
0.0	0.0	Northing	Easting	Latitude	Longitude
		1396168.96	3323447.60	40.415070	-104.338360
Plan: APD - Rev 1 (Wells Ranch AF07-651/Original Drilling)					
Created By: Shailey Jewell			Date: 13:14, October 17 2016		
OK to submit with 2A as per Noble Drilling					
10/17/2016 1:19					