

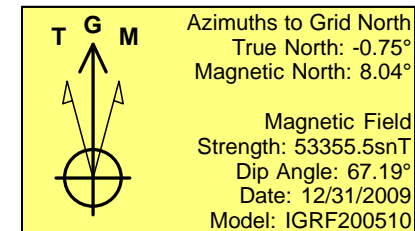
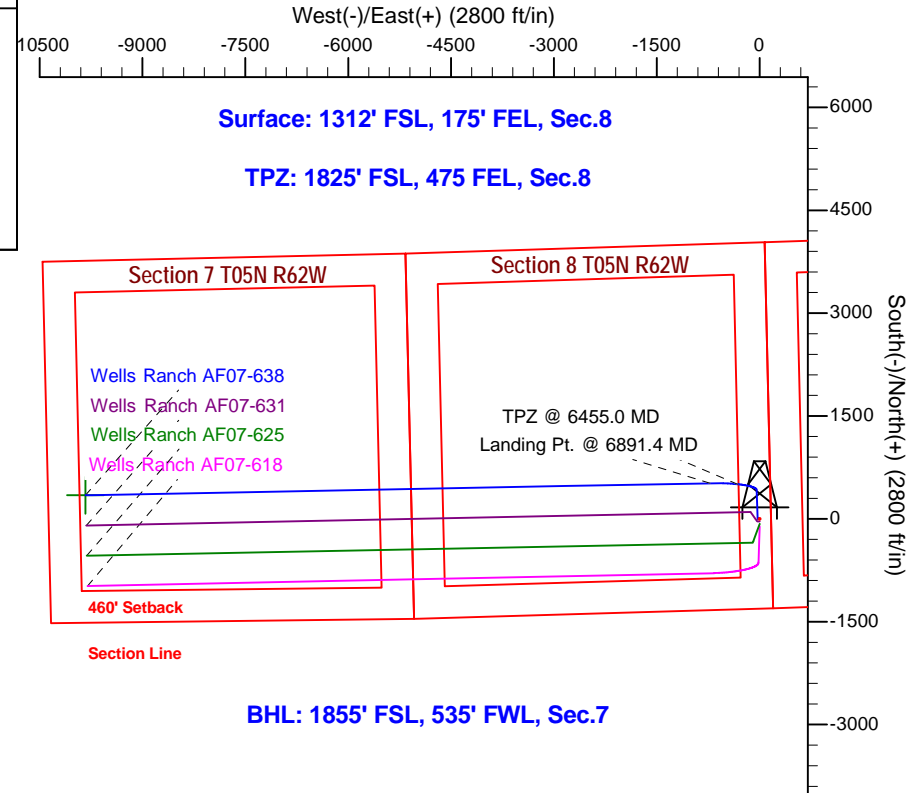
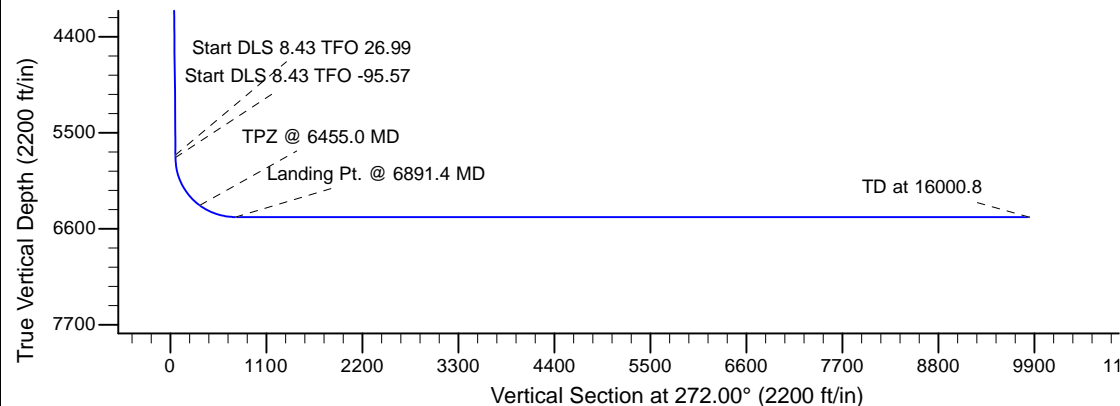
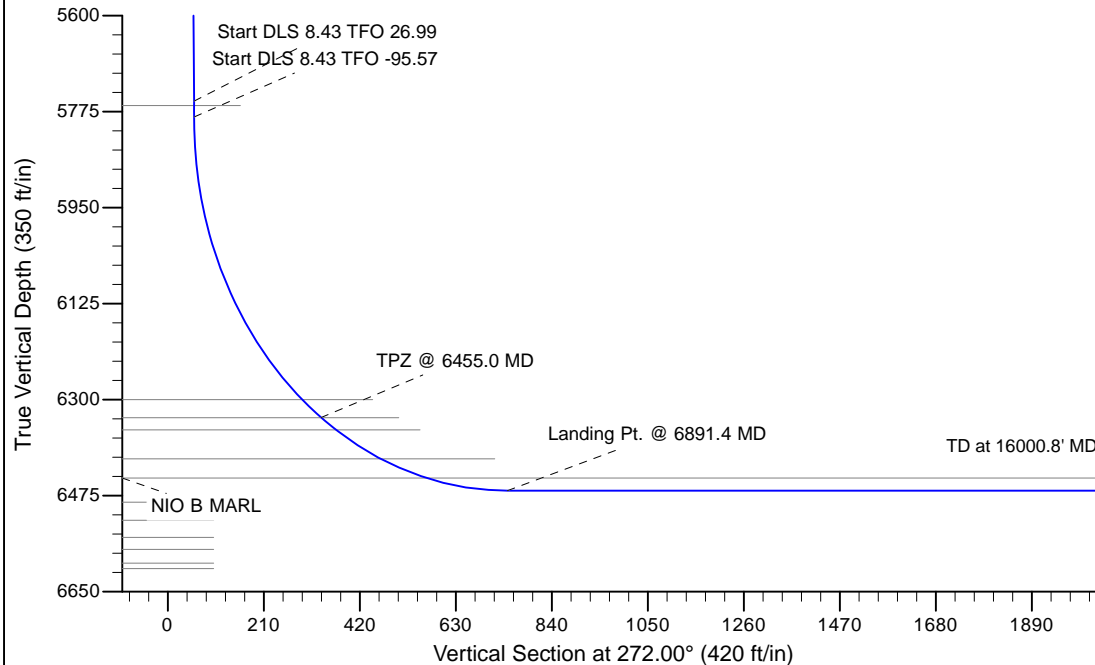
Project: Wattenberg Field
 Site: AF (Section 8-T05N-R62W) Weld County, Co
 Well: Wells Ranch AF07-638
 Wellbore: Original Drilling
 Design: APD - Rev 1

Northern Region Drilling - Working

Geodetic System: US State Plane 1983
 Datum: North American Datum 1983
 Ellipsoid: GRS 1980
 Zone: Colorado Northern Zone
 System Datum: Mean Sea Level

SECTION DETAILS

Sec	MD	Inc	Azi	TVD	+N/-S	+E/-W	Dleg	TFace	VSec	Target
1	0.0	0.00	0.00	0.0	0.0	0.0	0.00	0.00	0.0	
2	1900.0	0.00	0.00	1900.0	0.0	0.0	0.00	0.00	0.0	
3	2025.0	2.50	270.00	2025.0	0.0	-2.7	2.00	270.00	2.7	
4	2425.0	2.50	270.00	2424.6	0.0	-20.2	0.00	0.00	20.2	
5	2816.0	7.50	358.00	2814.3	25.5	-29.6	2.00	106.52	30.5	
6	5783.1	7.50	358.00	5756.0	412.6	-43.1	0.00	0.00	57.5	
7	5811.9	9.73	4.55	5784.6	416.9	-43.0	8.43	26.99	57.5	
8	6891.4	90.00	268.89	6466.0	520.0	-725.0	8.43	-95.57	742.7	
9	16000.8	90.00	268.89	6466.0	343.1	-9832.7	0.00	-90.00	9838.7	Wells Ranch AF07-638 BHL 1855'FSL, 535'FWL



WELL DETAILS: Wells Ranch AF07-638					
Ground Level: 4713.0					
	Northing	Easting	Latitude	Longitude	
0.0	0.0	1394486.27	3323486.35	40.410450	-104.338300
Plan: APD - Rev 1 (Wells Ranch AF07-638/Original Drilling)					
Created By: Shailey Jewell			Date: 13:38, October 17 2016		
OK to submit with 2A as per Noble Drilling					
10/17/2016 1:42					