

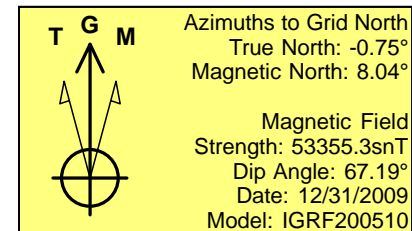
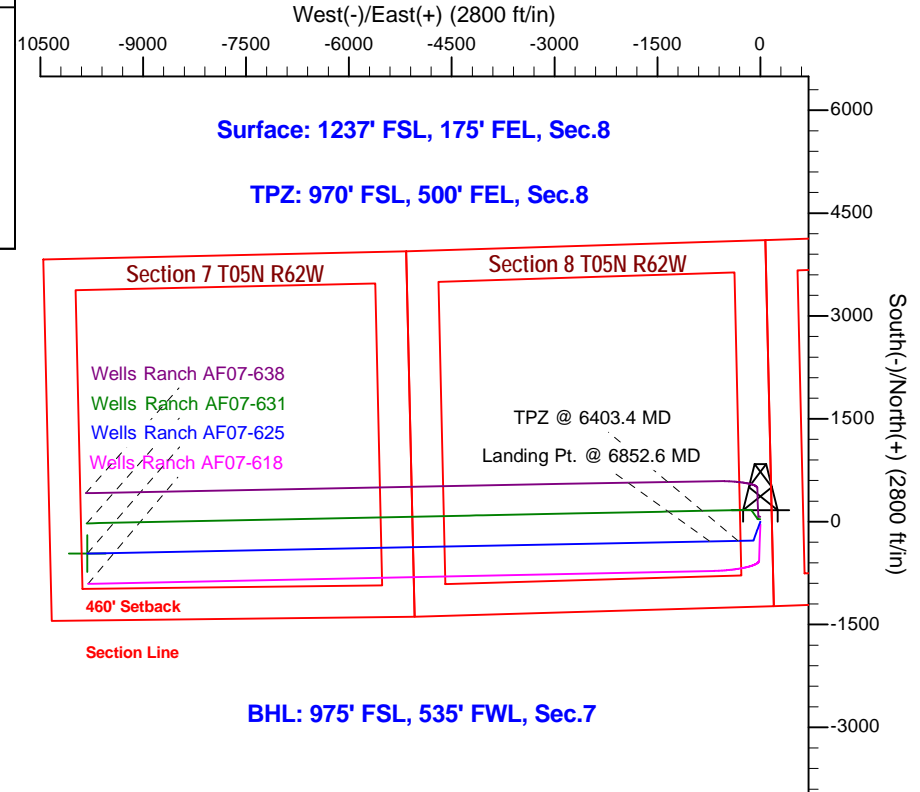
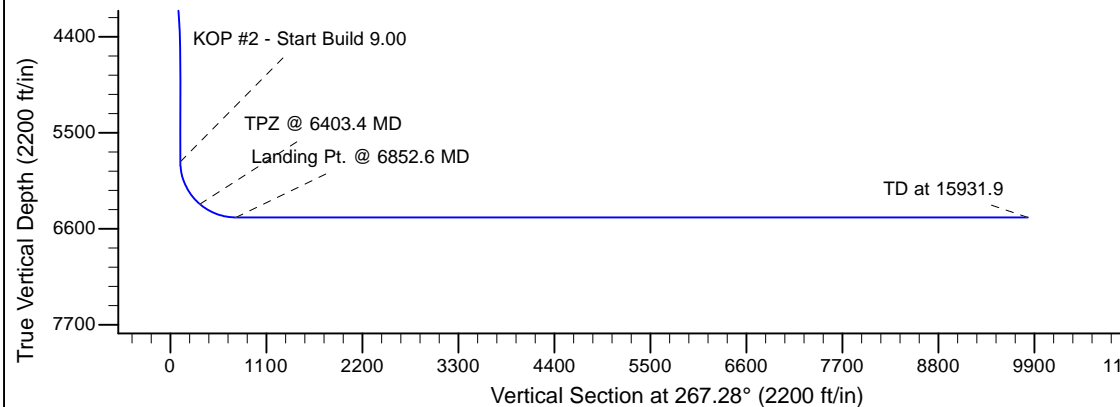
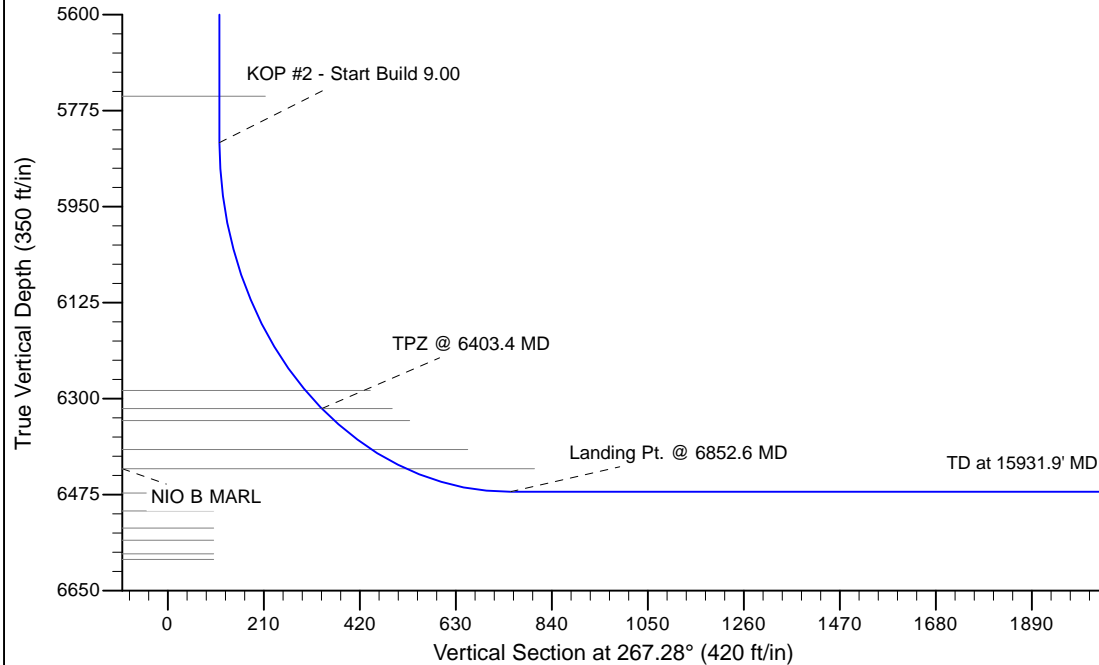
Project: Wattenberg Field
 Site: AF (Section 8-T05N-R62W) Weld County, Co
 Well: Wells Ranch AF07-625
 Wellbore: Original Drilling
 Design: APD - Rev 1

Northern Region Drilling - Working

Geodetic System: US State Plane 1983
 Datum: North American Datum 1983
 Ellipsoid: GRS 1980
 Zone: Colorado Northern Zone
 System Datum: Mean Sea Level

SECTION DETAILS

Sec	MD	Inc	Azi	TVD	+N/-S	+E/-W	Dleg	TFace	VSec	Target
1	0.0	0.00	0.00	0.0	0.0	0.0	0.00	0.00	0.0	
2	2200.0	0.00	0.00	2200.0	0.0	0.0	0.00	0.00	0.0	
3	2601.8	8.04	199.98	2600.5	-26.4	-9.6	2.00	199.98	10.9	
4	4292.4	8.04	199.98	4274.5	-248.6	-90.4	0.00	0.00	102.1	
5	4694.2	0.00	0.00	4675.0	-275.0	-100.0	2.00	180.00	112.9	
6	5852.6	0.00	0.00	5833.4	-275.0	-100.0	0.00	0.00	112.9	
7	6852.6	90.00	268.88	6470.0	-287.5	-736.5	9.00	268.88	749.3	
8	15931.9	90.00	268.88	6470.0	-465.5	-9814.1	0.00	0.00	9825.1	Wells Ranch AF07-625 BHL 975'FSL, 535'FWL



WELL DETAILS: Wells Ranch AF07-625					
Ground Level:4714.0					
0.0	0.0	Northing	Easting	Latitude	Longitude
		1394413.42	3323487.31	40.410250	-104.338300
Plan: APD - Rev 1 (Wells Ranch AF07-625/Original Drilling)					
Created By: Shailey Jewell			Date: 13:52, October 17 2016		
OK to submit with 2A aas per Noble Drilling					
10/17/2016 2:00					