

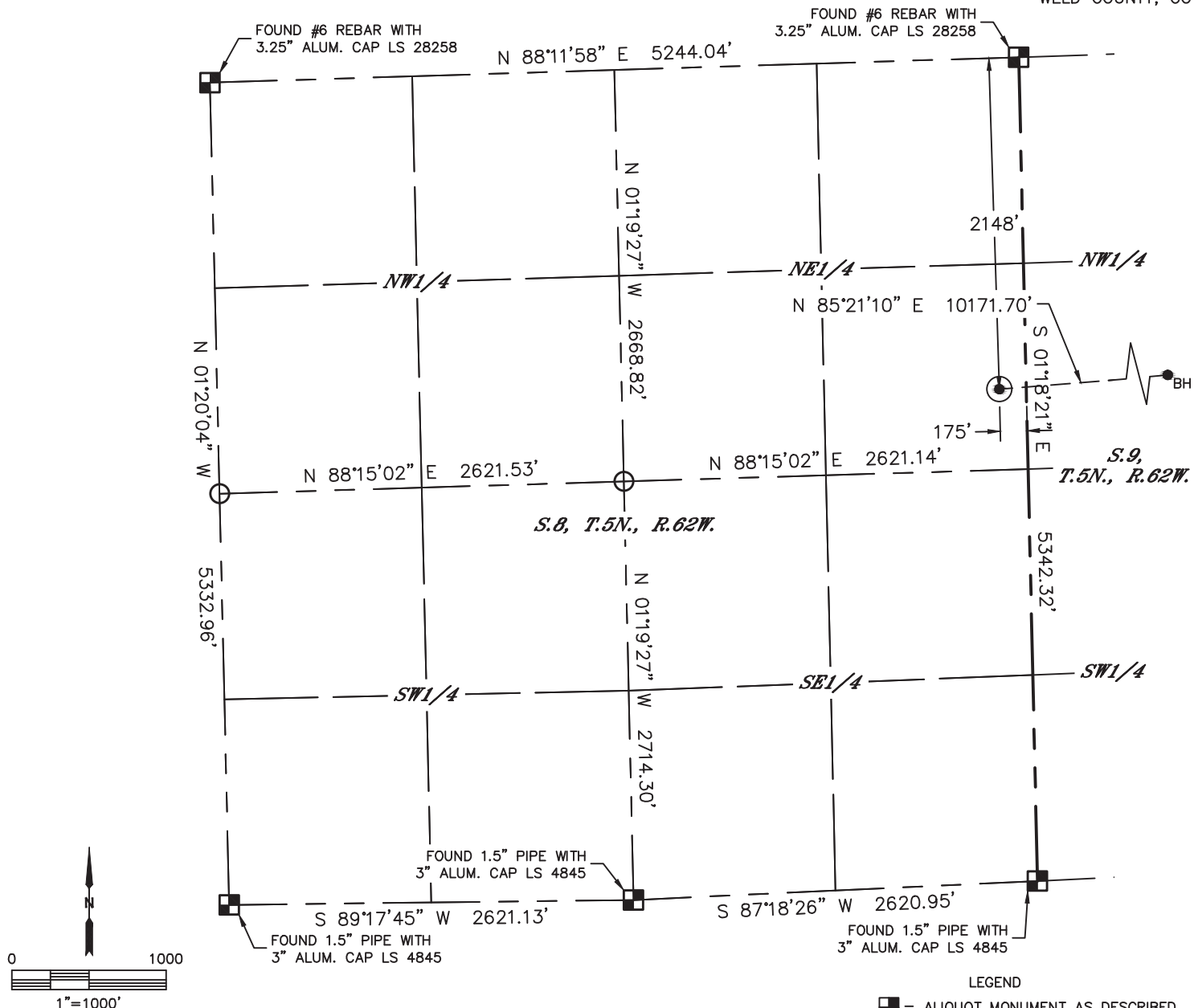


Lat40°, Inc. 6250 W. 10th Street, Unit 2, Greeley, CO 970-515-5294

# WELL LOCATION CERTIFICATE

WELLS RANCH STATE AF09-667

SECTION: 8  
TOWNSHIP: 5N  
RANGE: 62W  
6TH. P.M.  
WELD COUNTY, CO



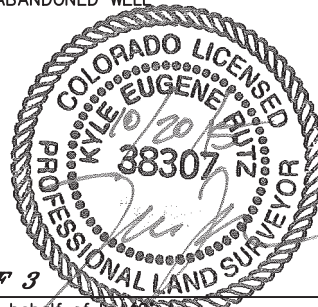
CLIENT: NOBLE ENERGY, INC.						LANDMAN: GREG WILSON			
INSTRUMENT OPERATOR: CHASE MILLER						SURVEY DATE: 9/17/2015		SURFACE USE: RANGELAND	
SHL FOOTAGE			SHL LAT °		SHL LONG °	SHL PDOP	SHL ELEV	SHL 1/4/1/4	SHL S-T-R
2148	FNL	175	FEL	40.41562	-104.33837	1.6	4707	SENE	8-5-62

BHL FOOTAGE				BHL LAT °	BHL LONG °	BHL S-T-R
1615	FNL	535	FEL	40.41751	-104.30193	10-5-62

NEAREST EXISTING WELL IN SHL 1/4/1/4	
EX. WELL	N/A
NEAREST CULTURAL ITEMS	
BUILDING	5280'+
BUILDING UNIT	5280'+
HIGH OCCUPANCY BUILDING UNIT	5280'+
DESIGNATED OUTSIDE ACTIVITY AREA	5280'+
PUBLIC ROAD	5280'+
ABOVE GROUND UTILITY	±3246'S
RAILROAD	5280'+
PROPERTY LINE	±175'E

NOTE:  
1) Bearings shown are Grid Bearings of the Colorado State Plane Coordinate System, North Zone, North American Datum 1983. The lineal dimensions as contained herein are based upon the "U.S. Survey Foot."  
2) Distances to section lines measured at 90 degrees from said section lines.  
3) Ground elevations are based on an observed GPS elevation (NAVD 1988 DATUM).  
4) Latitude and Longitude shown are (NAD 83 DATUM).  
5) IMPROVEMENTS: See LOCATION DRAWING for all visible improvements within 500' of oil and gas location.  
6) This map does not represent a boundary survey.

- LEGEND
- = ALIQUOT MONUMENT AS DESCRIBED
  - = CALCULATED POSITION
  - = SURFACE HOLE LOCATION (SHL)
  - ▲ = ENTRY POINT LOCATION (EP)
  - BH = BOTTOM HOLE LOCATION (BHL)
  - ⊙ = EXISTING WELL
  - ⊙ = ABANDONED WELL



SHEET 1 OF 3

Kyle E. Rutz—On behalf of Lat40, Inc.  
Colorado Licensed Professional Land Surveyor No. 38307  
DATE: 10/20/2015  
PROJECT#: 2015127

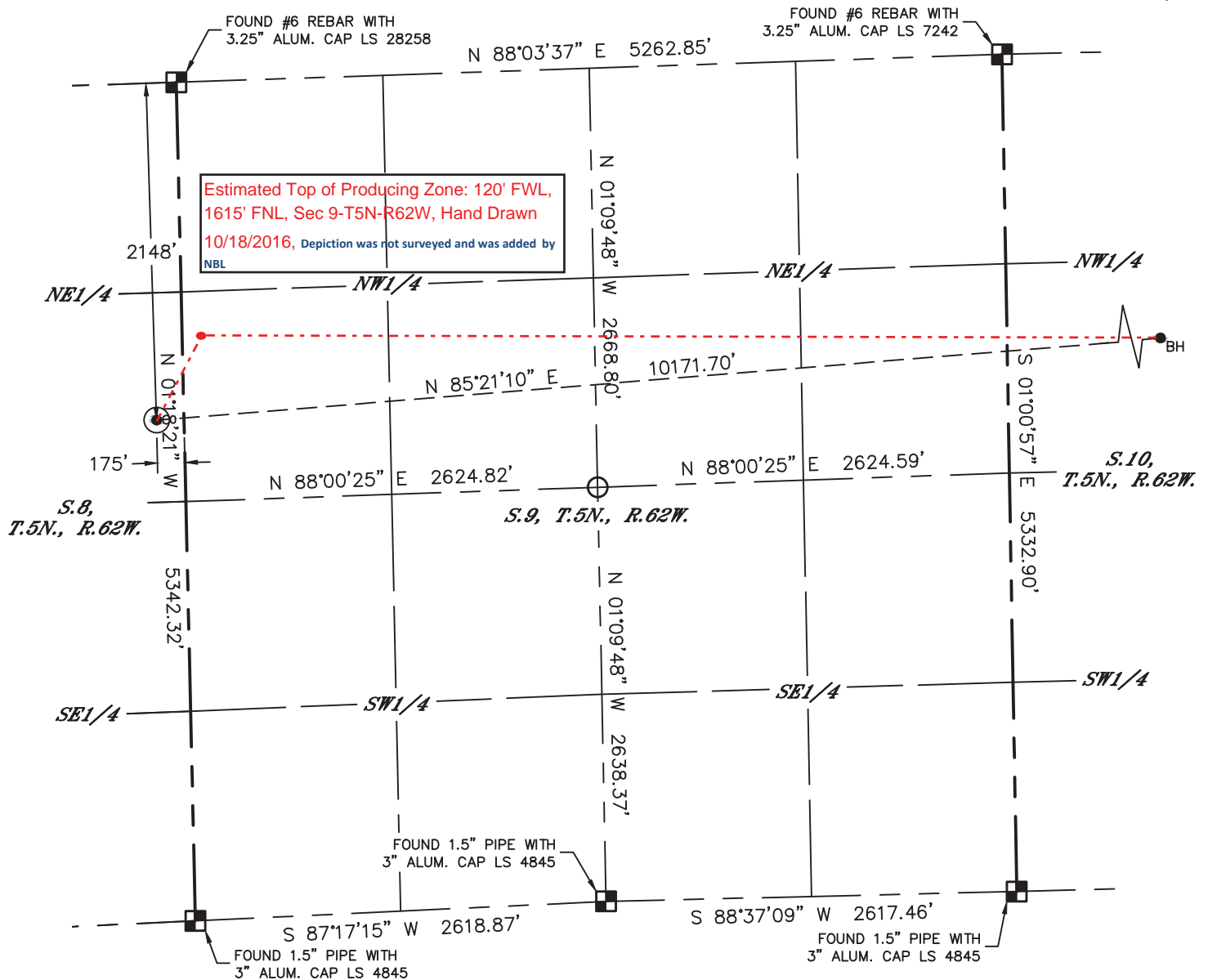


Lat40°, Inc. 6250 W. 10th Street, Unit 2, Greeley, CO 970-515-5294

# WELL LOCATION CERTIFICATE

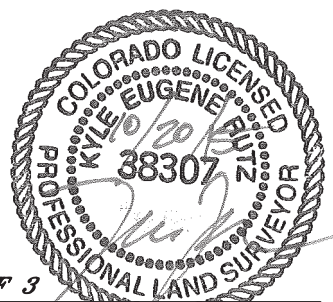
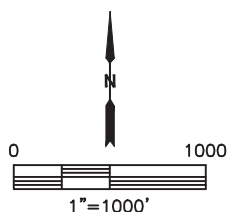
WELLS RANCH STATE AF09-667

SECTION: 8  
TOWNSHIP: 5N  
RANGE: 62W  
6TH. P.M.  
WELD COUNTY, CO



## LEGEND

- = ALIQUOT MONUMENT AS DESCRIBED
- = CALCULATED POSITION
- = SURFACE HOLE LOCATION (SHL)
- ▲ = ENTRY POINT LOCATION (EP)
- <sub>BH</sub> = BOTTOM HOLE LOCATION (BHL)
- ⊕ = EXISTING WELL
- ⊖ = ABANDONED WELL



SHEET 2 OF 3

Kyle E. Rutz—On behalf of Lat40, Inc.  
Colorado Licensed Professional Land Surveyor No. 38307  
DATE: 10/20/2015  
PROJECT#: 2015127

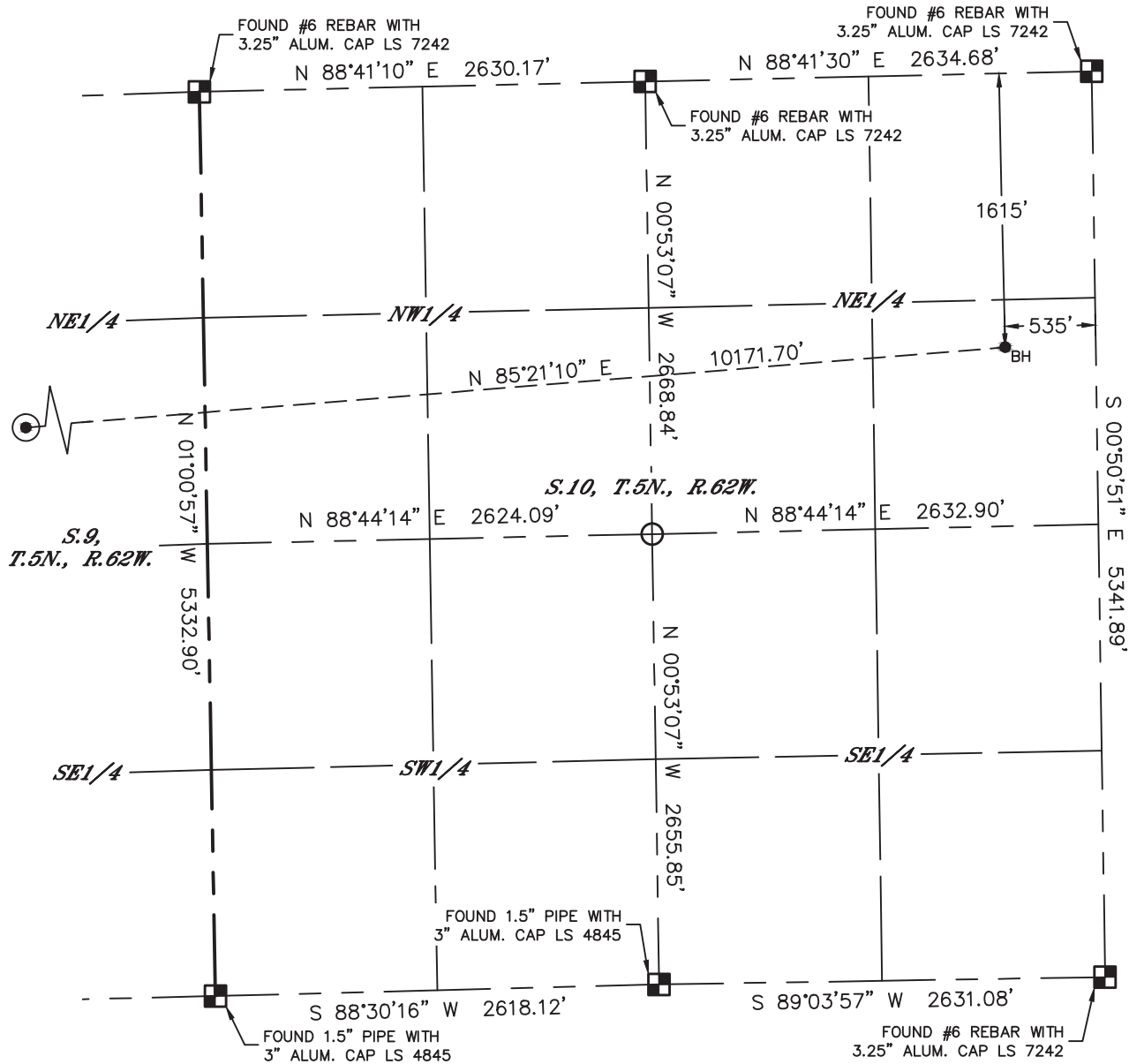


Lat40°, Inc. 6250 W. 10th Street, Unit 2, Greeley, CO 970-515-5294

# WELL LOCATION CERTIFICATE

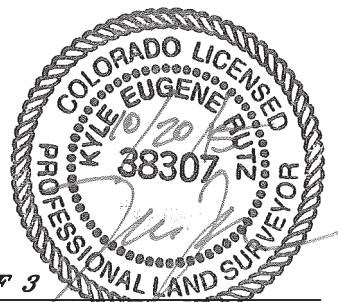
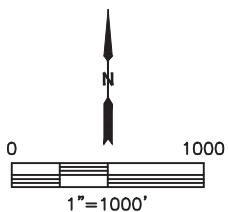
WELLS RANCH STATE AF09-667

SECTION: 8  
TOWNSHIP: 5N  
RANGE: 62W  
6TH. P.M.  
WELD COUNTY, CO



## LEGEND

- = ALIQUOT MONUMENT AS DESCRIBED
- = CALCULATED POSITION
- ⊙ = SURFACE HOLE LOCATION (SHL)
- ▲ = ENTRY POINT LOCATION (EP)
- = BOTTOM HOLE LOCATION (BHL)
- ⊕ = EXISTING WELL
- ⊖ = ABANDONED WELL



**SHEET 3 OF 3**

Kyle E. Rutz—On behalf of Lat40, Inc.  
Colorado Licensed Professional Land Surveyor No. 38307  
DATE: 10/20/2015  
PROJECT#: 2015127