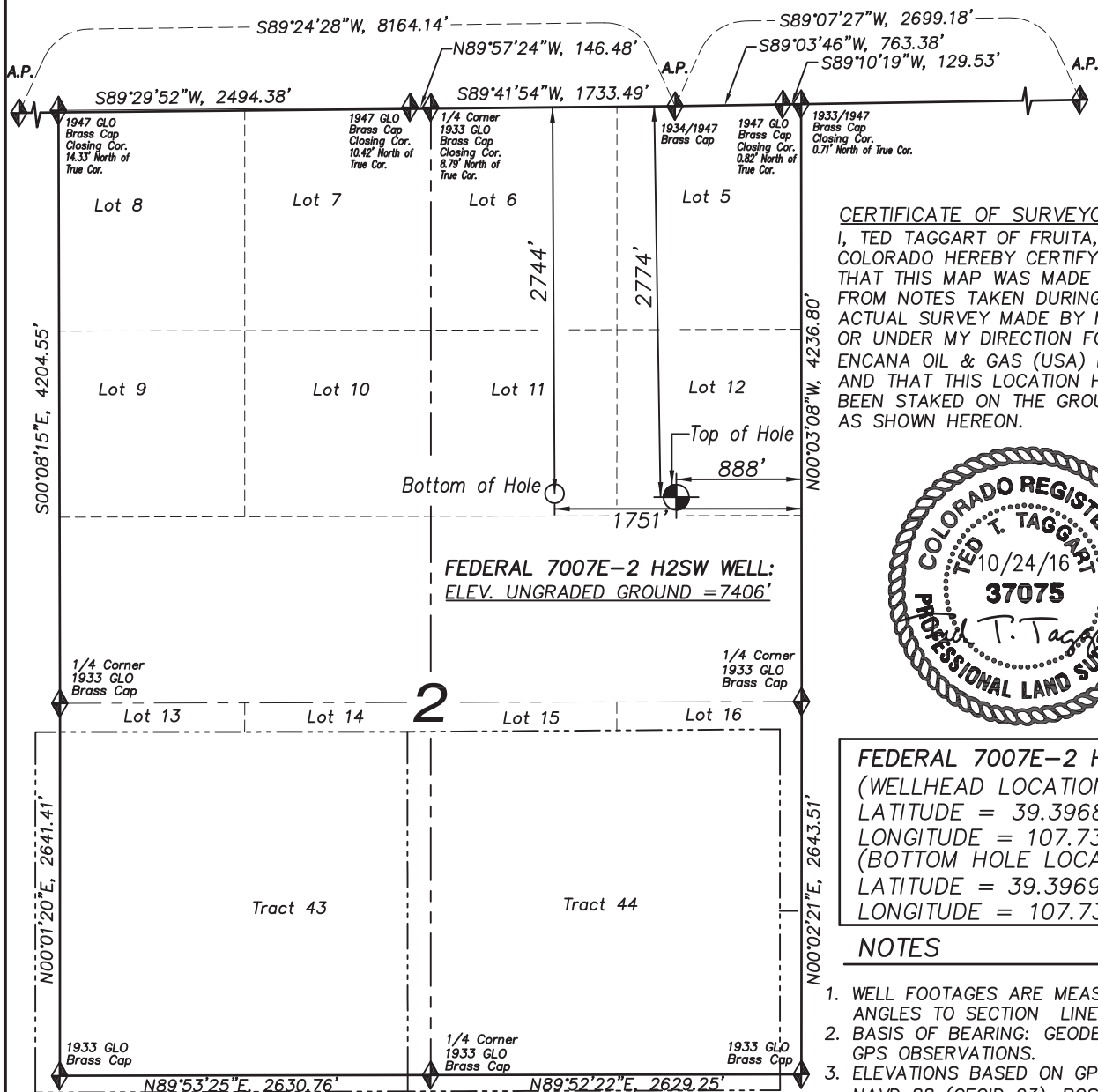
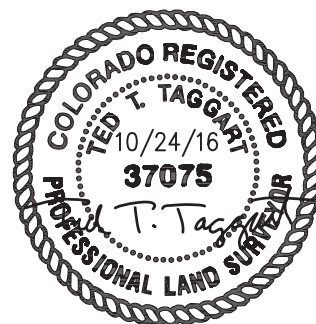


T8S, R93W, 6TH P.M.



CERTIFICATE OF SURVEYOR

I, TED TAGGART OF FRUITA, COLORADO HEREBY CERTIFY THAT THIS MAP WAS MADE FROM NOTES TAKEN DURING AN ACTUAL SURVEY MADE BY ME OR UNDER MY DIRECTION FOR ENCANA OIL & GAS (USA) INC. AND THAT THIS LOCATION HAS BEEN STAKED ON THE GROUND AS SHOWN HEREON.



FEDERAL 7007E-2 H2SW WELL
(WELLHEAD LOCATION) NAD 83
LATITUDE = 39.396865° N
LONGITUDE = 107.735196° W
(BOTTOM HOLE LOCATION) NAD 83
LATITUDE = 39.396921° N
LONGITUDE = 107.738250° W

NOTES

1. WELL FOOTAGES ARE MEASURED AT RIGHT ANGLES TO SECTION LINES.
2. BASIS OF BEARING: GEODETIC- BASED ON GPS OBSERVATIONS.
3. ELEVATIONS BASED ON GPS OBSERVATIONS, NAVD 88 (GEOID 03), POST PROCESSED USING NGS OPUS.
4. THE BOTTOM HOLE BEARS N88°36'45"W, 863' FROM TOP OF HOLE.
5. SEE ADDENDUM TO LEGAL PLAT (SHEET 1b) FOR VISIBLE IMPROVEMENTS WITHIN 500 FEET OF THE PROPOSED OIL & GAS LOCATION.
6. ALL GPS PROCEDURES COMPLY WITH COGCC RULE NO. 215. PDOP READING: 1.4
GPS OPERATOR: B. TAGGART AUGUST 31, 2016

MAP to ACCOMPANY

APPLICATION for PERMIT to DRILL
Encana Oil & Gas (USA) Inc.
Federal 7007E-2 (H2SW) Well

LOT 12, SECTION 2
T8S, R93W, 6th P.M.
GARFIELD COUNTY, COLORADO

LEGEND

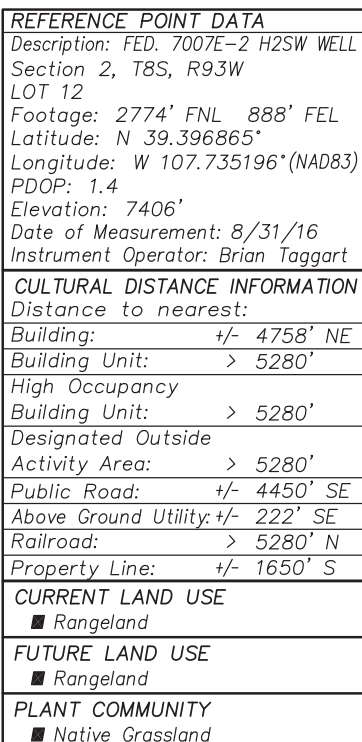
- ◆ SECTION CORNER LOCATED
- SURFACE LOCATION
- BOTTOM HOLE LOCATION
- RECORD LOCATION OF CORNER



906 Main Street
Evanston, Wyoming 82930
Phone No. (307) 789-4545

Location Plat		Scale: 1" = 1200'	SHEET 1a OF 10
Project No.	16-04-02	Date Surveyed: 8/31/16	
Date Drawn: 10/19/16		Latest Revision Date: 10/24/16	

SURVEY ADDENDUM
Federal 7007E-2 H2SW Well
SECTION 2, T8S, R93W, 6th P.M.
- CULTURAL DISTANCES MAP -



<i>Survey Addendum</i>		Scale: 1" = 200'	SHEET 1b OF 10
Project No. 16-04-02	Date Surveyed: 8/31/16		
Date Drawn: 10/19/16	Latest Revision Date: 10/24/16		