

Location:	COLORADO	Slot:	SLOT#04 ORR 14N-32C-M (2258'FSL & 474'FEL, SEC.36)
Field:	WELD COUNTY (NAD83,TRUE NORTH)	Well:	ORR 14N-32C-M
Facility:	SEC.36-T06N-R67W	Wellbore:	ORR 14N-32C-M PWB

Location:	COLORADO	Slot:	SLOT#04 ORR 14N-32C-M (2258'FSL & 474'FEL, SEC.36)
Field:	WELD COUNTY (NAD83,TRUE NORTH)	Well:	ORR 14N-32C-M
Facility:	SEC.36-T06N-R67W	Wellbore:	ORR 14N-32C-M PWB

Grid System: NAD83 / Lambert Colorado SP, Northern Zone (501), US feet

* = Wellpath was transformed from a different geodetic datum

North Reference: True north

Scale: True distance

Depths are in feet

Created by: wagnjam on 2016-10-13

Database: WA_DEN_Denver_Defn

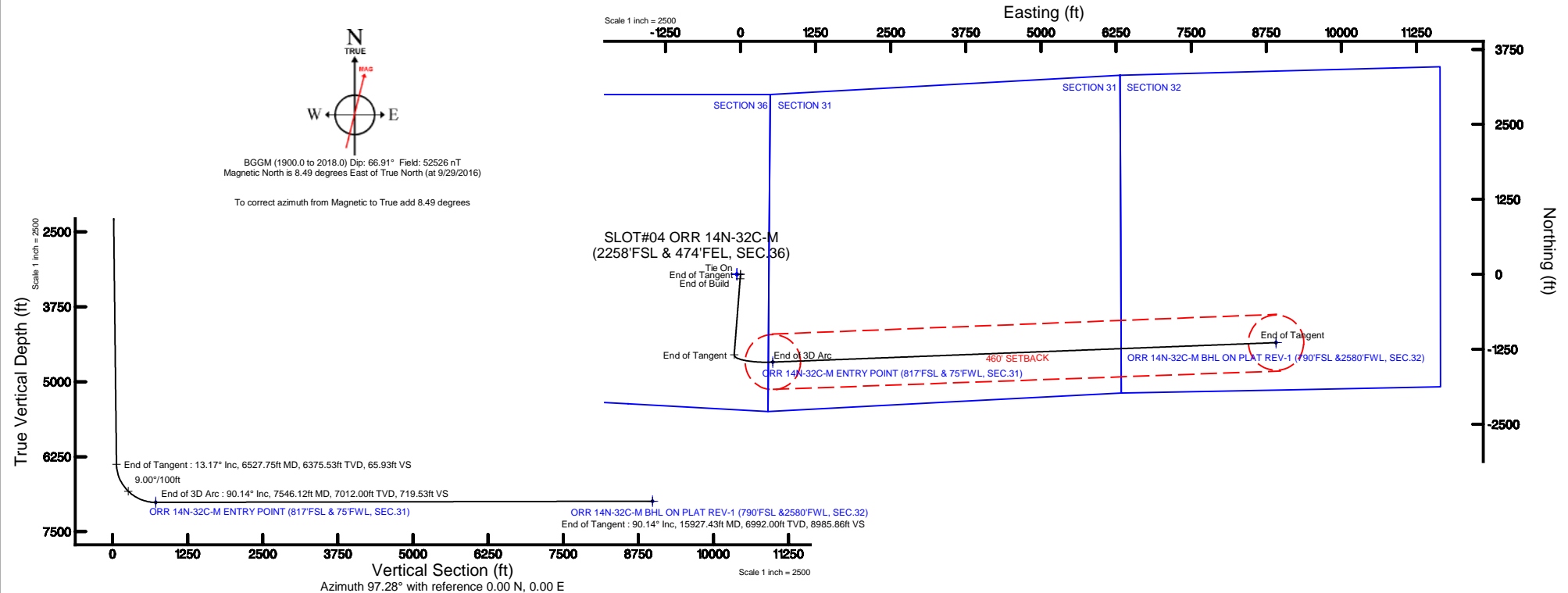
		Grid East (US ft)	Grid North (US ft)	Latitude	Longitude
		3185242.222	1404728.428	40°26'32.903"N	104°50'04.052"W
Local N (ft)	Local E (ft)	Grid East (US ft)	Grid North (US ft)	Latitude	Longitude
0.40	60.08	3185302.298	1404728.474	40°26'32.899"N	104°50'03.275"W
L & 474FEL, SEC.36))				4744R	
SEC.36))				0ft	
				4744R	

MD (ft)	Inc (°)	Az (°)	TVD (ft)	Local N (ft)	Local E (ft)	Grid East (US ft)	Grid North (US ft)	Latitude	Longitude
20.00	0.000	184.471	20.00	0.00	0.00	3185302.30	1404728.47	40°26'32.899"N	104°50'03.275"W

MD (ft)	X (ft)	Y (ft)	TVD (ft)	Inclination (°)	Azimuth (°)	VS (ft)	Comment
6946.61	21.10	-1424.11	6758.00	38.171	105.008	201.45	SHARON SPRINGS
6996.42	52.37	-1431.75	6796.00	42.369	102.573	233.43	NIO-A
7191.38	200.89	-1454.68	6919.00	59.131	95.798	383.67	NIO-B

Design Comment	MD (ft)	Inc (°)	Az (°)	TVD (ft)	Local N (ft)	Local E (ft)	DLS (°/100ft)	VS (ft)
Tie On	20.00	0.000	184.471	20.00	0.00	0.00	0.00	0.00
End of Tangent	300.00	0.000	184.471	300.00	0.00	0.00	0.00	0.00
End of Build	958.40	13.168	184.471	952.62	-75.10	-5.87	2.00	3.70
End of Tangent	6527.75	13.168	184.471	6375.53	-1339.97	-104.77	0.00	65.93
End of 3D Arc	7546.12	90.137	87.782	7012.00	-1463.43	538.37	9.00	719.53
End of Tangent	15927.43	90.137	87.782	6992.00	-1139.04	8913.37	0.00	8985.86

Name	MD (ft)	TVD (ft)	Local N (ft)	Local E (ft)	Grid East (US ft)	Grid North (US ft)	Latitude	Longitude
SEC.31-T06N-R66W		0.00	0.40	-60.08	138542.22	1404728.43	40°26'32.903"N	104°50'04.052"W
SEC.31-T06N-R67W		0.00	0.40	-60.08	138542.22	1404728.43	40°26'32.903"N	104°50'04.052"W
SEC.32-T06N-R66W		0.00	0.40	-60.08	138542.22	1404728.43	40°26'32.903"N	104°50'04.052"W
SEC.32-T06N-R67W		0.00	0.40	-60.08	138542.22	1404728.43	40°26'32.903"N	104°50'04.052"W
SEC.35-T06N-R67W		0.00	0.40	-60.08	138542.22	1404728.43	40°26'32.903"N	104°50'04.052"W
SEC.36-T06N-R67W		0.00	0.40	-60.08	138542.22	1404728.43	40°26'32.903"N	104°50'04.052"W
ORR 14N-32C-M BHL ON PLAT REV1 (7907FSL 425807FWL SEC.32)	15927.43	6990.00	-1139.04	8913.37	1342423.62	1403656.43	40°26'21.628"N	104°48'07.599"W
ORR 14N-32C-M ENTRY POINT (817FSL & 75FWL SEC.31)	7546.12	7012.00	-1463.43	538.37	1335851.62	1403269.19	40°26'18.438"N	104°49'36.312"W
SEC.31-21-T06N-R67W 460' SETBACK		7112.00	0.40	-60.08	138542.22	1404728.43	40°26'32.903"N	104°50'04.052"W



To correct azimuth from Magnetic to True add 8.49 degrees

ORR_14N-32C-M_PWP__REV-A.1_.1as

~VERSION INFORMATION

VERS. 2.0 : CWLS LOG ASCII STANDARD-VERSION 2.0
 WRAP. NO : ASCII DATA SECTION CONTAINS ONE ROW PER WELLPATH STATION

~WELL INFORMATION

#MNEM	.UNITS	DATA	:DESCRIPTION
#----	.-----	----	:-----
STRT	.ft	0.00	:START MD
STOP	.ft	15927.43	:STOP MD
STEP	.ft	0.0	:STEP (non-uniform increment)
NULL	.	-999.99	:NULL
COMP	.	SYNERGY RESOURCES CORPORATION	:OPERATOR
WELL	.	ORR 14N-32C-M	:WELL
FLD	.	WELD COUNTY (NAD83,TRUE NORTH)	:FIELD
LOC	.	COLORADO	:AREA (aka: Location)
CNTY	.	N/A	:COUNTY
STAT	.	N/A	:STATE
CTRY	.	N/A	:COUNTRY
SRVC	.	Baker Hughes	:CONTRACTOR
DATE	.	10/25/2016	:LOG REV DATE
API	.		:API NUMBER

~OTHER INFORMATION

#Software: WellArchitect(R) Version 5.0

#MNEM	.UNITS	DATA	:DESCRIPTION
#----	.-----	----	:-----
WPTYPE	.	PLANNED WELLPATH	:WELLPATH TYPE
FACILITY	.	SEC.36-T06N-R67W	:FACILITY
SLOT	.	SLOT#04 ORR 14N-32C-M (2258'FSL & 474'FEL, SEC.36)	:SLOT
WELLBORE	.	ORR 14N-32C-M PWB	:WELLBORE
WELLPATH	.	ORR 14N-32C-M PWP (REV-A.1)	:WELLPATH
MDREFPT	.	PRECISION 462 (20'KB) (RKB)	:MD REFERENCE POINT
TVDREFPT	.	PRECISION 462 (20'KB) (RKB)	:TVD REFERENCE POINT
LCLREFPT	.	SLOT	:LOCAL COORDINATE REFERENCE PT
VSAZIMUTH	.deg	97.28	:VERTICAL SECTION AZIMUTH
VSORIGN	.ft	0.00	:VERTICAL SECTION ORIGIN NORTH
VSORIGE	.ft	0.00	:VERTICAL SECTION ORIGIN EAST

~CURVE (WELLPATH) INFORMATION

#MNEM	.UNITS	:DESCRIPTION
#----	.-----	:-----
DEPT	.ft	:MEASURED DEPTH
INC	.deg	:INCLINATION
AZI	.deg	:AZIMUTH
TVD	.ft	:TRUE VERTICAL DEPTH
SECT	.ft	:CROSS SECTION (CURTAIN/VERTICAL)
LOCALN	.ft	:LOCAL NORTH
LOCALE	.ft	:LOCAL EAST

ORR_14N-32C-M_PWP__REV-A.1_.1as

LAT .deg :LATITUDE
 LONG .deg :LONGITUDE
 DLS .deg/100ft :DOGLEG SEVERITY

~ASCII DATA

0.00	0.00	184.47	0.00	0.00	0.00	0.00	40.4424719	-104.8342431	0.00
20.00	0.00	184.47	20.00	0.00	0.00	0.00	40.4424719	-104.8342431	0.00
120.00	0.00	184.47	120.00	0.00	0.00	0.00	40.4424719	-104.8342431	0.00
220.00	0.00	184.47	220.00	0.00	0.00	0.00	40.4424719	-104.8342431	0.00
300.00	0.00	184.47	300.00	0.00	0.00	0.00	40.4424719	-104.8342431	0.00
320.00	0.40	184.47	320.00	0.00	-0.07	-0.01	40.4424718	-104.8342431	2.00
420.00	2.40	184.47	419.96	0.12	-2.51	-0.20	40.4424651	-104.8342438	2.00
520.00	4.40	184.47	519.78	0.41	-8.42	-0.66	40.4424488	-104.8342454	2.00
620.00	6.40	184.47	619.33	0.88	-17.80	-1.39	40.4424231	-104.8342481	2.00
720.00	8.40	184.47	718.50	1.51	-30.64	-2.40	40.4423878	-104.8342517	2.00
820.00	10.40	184.47	817.15	2.31	-46.92	-3.67	40.4423432	-104.8342562	2.00
920.00	12.40	184.47	915.17	3.28	-66.63	-5.21	40.4422891	-104.8342618	2.00
958.40	13.17	184.47	952.62	3.70	-75.10	-5.87	40.4422658	-104.8342641	2.00
1020.00	13.17	184.47	1012.60	4.38	-89.09	-6.97	40.4422274	-104.8342681	0.00
1120.00	13.17	184.47	1109.97	5.50	-111.80	-8.74	40.4421651	-104.8342745	0.00
1220.00	13.17	184.47	1207.34	6.62	-134.51	-10.52	40.4421027	-104.8342808	0.00
1320.00	13.17	184.47	1304.71	7.74	-157.22	-12.29	40.4420404	-104.8342872	0.00
1420.00	13.17	184.47	1402.08	8.85	-179.93	-14.07	40.4419781	-104.8342936	0.00
1520.00	13.17	184.47	1499.45	9.97	-202.64	-15.84	40.4419157	-104.8343000	0.00
1620.00	13.17	184.47	1596.82	11.09	-225.35	-17.62	40.4418534	-104.8343064	0.00
1720.00	13.17	184.47	1694.19	12.21	-248.07	-19.39	40.4417910	-104.8343127	0.00
1820.00	13.17	184.47	1791.56	13.32	-270.78	-21.17	40.4417287	-104.8343191	0.00
1920.00	13.17	184.47	1888.94	14.44	-293.49	-22.95	40.4416664	-104.8343255	0.00
2020.00	13.17	184.47	1986.31	15.56	-316.20	-24.72	40.4416040	-104.8343319	0.00
2120.00	13.17	184.47	2083.68	16.68	-338.91	-26.50	40.4415417	-104.8343383	0.00
2220.00	13.17	184.47	2181.05	17.79	-361.62	-28.27	40.4414793	-104.8343446	0.00
2320.00	13.17	184.47	2278.42	18.91	-384.33	-30.05	40.4414170	-104.8343510	0.00
2420.00	13.17	184.47	2375.79	20.03	-407.05	-31.82	40.4413547	-104.8343574	0.00
2520.00	13.17	184.47	2473.16	21.15	-429.76	-33.60	40.4412923	-104.8343638	0.00
2620.00	13.17	184.47	2570.53	22.26	-452.47	-35.38	40.4412300	-104.8343701	0.00
2720.00	13.17	184.47	2667.90	23.38	-475.18	-37.15	40.4411676	-104.8343765	0.00
2820.00	13.17	184.47	2765.27	24.50	-497.89	-38.93	40.4411053	-104.8343829	0.00
2920.00	13.17	184.47	2862.64	25.62	-520.60	-40.70	40.4410430	-104.8343893	0.00
3020.00	13.17	184.47	2960.01	26.73	-543.31	-42.48	40.4409806	-104.8343957	0.00
3120.00	13.17	184.47	3057.38	27.85	-566.02	-44.25	40.4409183	-104.8344020	0.00
3220.00	13.17	184.47	3154.75	28.97	-588.74	-46.03	40.4408559	-104.8344084	0.00
3320.00	13.17	184.47	3252.12	30.09	-611.45	-47.81	40.4407936	-104.8344148	0.00
3420.00	13.17	184.47	3349.50	31.20	-634.16	-49.58	40.4407313	-104.8344212	0.00
3520.00	13.17	184.47	3446.87	32.32	-656.87	-51.36	40.4406689	-104.8344276	0.00
3620.00	13.17	184.47	3544.24	33.44	-679.58	-53.13	40.4406066	-104.8344339	0.00
3720.00	13.17	184.47	3641.61	34.56	-702.29	-54.91	40.4405442	-104.8344403	0.00
3820.00	13.17	184.47	3738.98	35.67	-725.00	-56.68	40.4404819	-104.8344467	0.00
3920.00	13.17	184.47	3836.35	36.79	-747.71	-58.46	40.4404196	-104.8344531	0.00

				ORR_14N-32C-M_PWP__REV-A.1_.las						
4020.00	13.17	184.47	3933.72	37.91	-770.43	-60.24	40.4403572	-104.8344595	0.00	
4120.00	13.17	184.47	4031.09	39.03	-793.14	-62.01	40.4402949	-104.8344658	0.00	
4220.00	13.17	184.47	4128.46	40.14	-815.85	-63.79	40.4402325	-104.8344722	0.00	
4320.00	13.17	184.47	4225.83	41.26	-838.56	-65.56	40.4401702	-104.8344786	0.00	
4420.00	13.17	184.47	4323.20	42.38	-861.27	-67.34	40.4401079	-104.8344850	0.00	
4520.00	13.17	184.47	4420.57	43.50	-883.98	-69.11	40.4400455	-104.8344913	0.00	
4620.00	13.17	184.47	4517.94	44.61	-906.69	-70.89	40.4399832	-104.8344977	0.00	
4720.00	13.17	184.47	4615.31	45.73	-929.40	-72.67	40.4399208	-104.8345041	0.00	
4820.00	13.17	184.47	4712.68	46.85	-952.12	-74.44	40.4398585	-104.8345105	0.00	
4920.00	13.17	184.47	4810.05	47.97	-974.83	-76.22	40.4397962	-104.8345169	0.00	
5020.00	13.17	184.47	4907.43	49.08	-997.54	-77.99	40.4397338	-104.8345232	0.00	
5120.00	13.17	184.47	5004.80	50.20	-1020.25	-79.77	40.4396715	-104.8345296	0.00	
5220.00	13.17	184.47	5102.17	51.32	-1042.96	-81.54	40.4396091	-104.8345360	0.00	
5320.00	13.17	184.47	5199.54	52.44	-1065.67	-83.32	40.4395468	-104.8345424	0.00	
5420.00	13.17	184.47	5296.91	53.55	-1088.38	-85.10	40.4394845	-104.8345488	0.00	
5520.00	13.17	184.47	5394.28	54.67	-1111.10	-86.87	40.4394221	-104.8345551	0.00	
5620.00	13.17	184.47	5491.65	55.79	-1133.81	-88.65	40.4393598	-104.8345615	0.00	
5720.00	13.17	184.47	5589.02	56.91	-1156.52	-90.42	40.4392974	-104.8345679	0.00	
5820.00	13.17	184.47	5686.39	58.02	-1179.23	-92.20	40.4392351	-104.8345743	0.00	
5920.00	13.17	184.47	5783.76	59.14	-1201.94	-93.97	40.4391728	-104.8345807	0.00	
6020.00	13.17	184.47	5881.13	60.26	-1224.65	-95.75	40.4391104	-104.8345870	0.00	
6120.00	13.17	184.47	5978.50	61.38	-1247.36	-97.52	40.4390481	-104.8345934	0.00	
6220.00	13.17	184.47	6075.87	62.49	-1270.07	-99.30	40.4389857	-104.8345998	0.00	
6320.00	13.17	184.47	6173.24	63.61	-1292.79	-101.08	40.4389234	-104.8346062	0.00	
6420.00	13.17	184.47	6270.61	64.73	-1315.50	-102.85	40.4388611	-104.8346125	0.00	
6520.00	13.17	184.47	6367.99	65.85	-1338.21	-104.63	40.4387987	-104.8346189	0.00	
6527.75	13.17	184.47	6375.53	65.93	-1339.97	-104.77	40.4387939	-104.8346194	0.00	
6620.00	14.71	150.07	6465.21	73.55	-1360.63	-99.73	40.4387372	-104.8346013	9.00	
6720.00	20.40	126.49	6560.64	96.48	-1382.04	-79.34	40.4386784	-104.8345281	9.00	
6820.00	27.84	113.92	6651.90	134.14	-1401.92	-43.92	40.4386239	-104.8344008	9.00	
6920.00	35.95	106.50	6736.77	185.59	-1419.76	5.67	40.4385749	-104.8342227	9.00	
7020.00	44.37	101.55	6813.14	249.57	-1435.13	68.20	40.4385327	-104.8339980	9.00	
7120.00	52.95	97.92	6879.14	324.49	-1447.66	142.14	40.4384983	-104.8337324	9.00	
7220.00	61.62	95.03	6933.15	408.53	-1457.03	225.66	40.4384726	-104.8334324	9.00	
7320.00	70.34	92.58	6973.82	499.60	-1463.01	316.70	40.4384562	-104.8331053	9.00	
7420.00	79.08	90.38	7000.17	595.46	-1465.46	413.03	40.4384494	-104.8327593	9.00	
7520.00	87.85	88.31	7011.54	693.75	-1464.32	512.27	40.4384526	-104.8324028	9.00	
7546.12	90.14	87.78	7012.00	719.53	-1463.43	538.37	40.4384550	-104.8323090	9.00	
7620.00	90.14	87.78	7011.82	792.40	-1460.57	612.19	40.4384628	-104.8320438	0.00	
7720.00	90.14	87.78	7011.59	891.02	-1456.70	712.12	40.4384735	-104.8316848	0.00	
7820.00	90.14	87.78	7011.35	989.65	-1452.83	812.04	40.4384841	-104.8313258	0.00	
7920.00	90.14	87.78	7011.11	1088.28	-1448.96	911.97	40.4384947	-104.8309669	0.00	
8020.00	90.14	87.78	7010.87	1186.91	-1445.08	1011.89	40.4385053	-104.8306079	0.00	
8120.00	90.14	87.78	7010.63	1285.54	-1441.21	1111.82	40.4385159	-104.8302489	0.00	
8220.00	90.14	87.78	7010.39	1384.16	-1437.34	1211.74	40.4385265	-104.8298900	0.00	
8320.00	90.14	87.78	7010.15	1482.79	-1433.47	1311.67	40.4385371	-104.8295310	0.00	
8420.00	90.14	87.78	7009.91	1581.42	-1429.60	1411.59	40.4385477	-104.8291720	0.00	
8520.00	90.14	87.78	7009.68	1680.05	-1425.73	1511.52	40.4385584	-104.8288130	0.00	

ORR_14N-32C-M_PWP__REV-A.1_.las									
8620.00	90.14	87.78	7009.44	1778.68	-1421.86	1611.44	40.4385690	-104.8284541	0.00
8720.00	90.14	87.78	7009.20	1877.31	-1417.99	1711.37	40.4385796	-104.8280951	0.00
8820.00	90.14	87.78	7008.96	1975.93	-1414.12	1811.29	40.4385902	-104.8277361	0.00
8920.00	90.14	87.78	7008.72	2074.56	-1410.25	1911.22	40.4386008	-104.8273771	0.00
9020.00	90.14	87.78	7008.48	2173.19	-1406.38	2011.14	40.4386114	-104.8270182	0.00
9120.00	90.14	87.78	7008.24	2271.82	-1402.51	2111.07	40.4386220	-104.8266592	0.00
9220.00	90.14	87.78	7008.01	2370.45	-1398.64	2210.99	40.4386326	-104.8263002	0.00
9320.00	90.14	87.78	7007.77	2469.07	-1394.77	2310.92	40.4386432	-104.8259412	0.00
9420.00	90.14	87.78	7007.53	2567.70	-1390.90	2410.84	40.4386538	-104.8255823	0.00
9520.00	90.14	87.78	7007.29	2666.33	-1387.03	2510.76	40.4386644	-104.8252233	0.00
9620.00	90.14	87.78	7007.05	2764.96	-1383.16	2610.69	40.4386750	-104.8248643	0.00
9720.00	90.14	87.78	7006.81	2863.59	-1379.29	2710.61	40.4386856	-104.8245053	0.00
9820.00	90.14	87.78	7006.57	2962.21	-1375.42	2810.54	40.4386961	-104.8241464	0.00
9920.00	90.14	87.78	7006.34	3060.84	-1371.55	2910.46	40.4387067	-104.8237874	0.00
10020.00	90.14	87.78	7006.10	3159.47	-1367.68	3010.39	40.4387173	-104.8234284	0.00
10120.00	90.14	87.78	7005.86	3258.10	-1363.81	3110.31	40.4387279	-104.8230694	0.00
10220.00	90.14	87.78	7005.62	3356.73	-1359.94	3210.24	40.4387385	-104.8227105	0.00
10320.00	90.14	87.78	7005.38	3455.36	-1356.07	3310.16	40.4387491	-104.8223515	0.00
10420.00	90.14	87.78	7005.14	3553.98	-1352.20	3410.09	40.4387597	-104.8219925	0.00
10520.00	90.14	87.78	7004.90	3652.61	-1348.33	3510.01	40.4387703	-104.8216335	0.00
10620.00	90.14	87.78	7004.66	3751.24	-1344.46	3609.94	40.4387808	-104.8212746	0.00
10720.00	90.14	87.78	7004.43	3849.87	-1340.59	3709.86	40.4387914	-104.8209156	0.00
10820.00	90.14	87.78	7004.19	3948.50	-1336.72	3809.79	40.4388020	-104.8205566	0.00
10920.00	90.14	87.78	7003.95	4047.12	-1332.84	3909.71	40.4388126	-104.8201976	0.00
11020.00	90.14	87.78	7003.71	4145.75	-1328.97	4009.64	40.4388232	-104.8198387	0.00
11120.00	90.14	87.78	7003.47	4244.38	-1325.10	4109.56	40.4388338	-104.8194797	0.00
11220.00	90.14	87.78	7003.23	4343.01	-1321.23	4209.49	40.4388443	-104.8191207	0.00
11320.00	90.14	87.78	7002.99	4441.64	-1317.36	4309.41	40.4388549	-104.8187617	0.00
11420.00	90.14	87.78	7002.76	4540.27	-1313.49	4409.34	40.4388655	-104.8184027	0.00
11520.00	90.14	87.78	7002.52	4638.89	-1309.62	4509.26	40.4388761	-104.8180438	0.00
11620.00	90.14	87.78	7002.28	4737.52	-1305.75	4609.19	40.4388866	-104.8176848	0.00
11720.00	90.14	87.78	7002.04	4836.15	-1301.88	4709.11	40.4388972	-104.8173258	0.00
11820.00	90.14	87.78	7001.80	4934.78	-1298.01	4809.03	40.4389078	-104.8169668	0.00
11920.00	90.14	87.78	7001.56	5033.41	-1294.14	4908.96	40.4389183	-104.8166079	0.00
12020.00	90.14	87.78	7001.32	5132.03	-1290.27	5008.88	40.4389289	-104.8162489	0.00
12120.00	90.14	87.78	7001.09	5230.66	-1286.40	5108.81	40.4389395	-104.8158899	0.00
12220.00	90.14	87.78	7000.85	5329.29	-1282.53	5208.73	40.4389500	-104.8155309	0.00
12320.00	90.14	87.78	7000.61	5427.92	-1278.66	5308.66	40.4389606	-104.8151719	0.00
12420.00	90.14	87.78	7000.37	5526.55	-1274.79	5408.58	40.4389712	-104.8148130	0.00
12520.00	90.14	87.78	7000.13	5625.17	-1270.92	5508.51	40.4389817	-104.8144540	0.00
12620.00	90.14	87.78	6999.89	5723.80	-1267.05	5608.43	40.4389923	-104.8140950	0.00
12720.00	90.14	87.78	6999.65	5822.43	-1263.18	5708.36	40.4390029	-104.8137360	0.00
12820.00	90.14	87.78	6999.42	5921.06	-1259.31	5808.28	40.4390134	-104.8133771	0.00
12920.00	90.14	87.78	6999.18	6019.69	-1255.44	5908.21	40.4390240	-104.8130181	0.00
13020.00	90.14	87.78	6998.94	6118.32	-1251.57	6008.13	40.4390345	-104.8126591	0.00
13120.00	90.14	87.78	6998.70	6216.94	-1247.70	6108.06	40.4390451	-104.8123001	0.00
13220.00	90.14	87.78	6998.46	6315.57	-1243.83	6207.98	40.4390556	-104.8119411	0.00
13320.00	90.14	87.78	6998.22	6414.20	-1239.96	6307.91	40.4390662	-104.8115822	0.00

ORR_14N-32C-M_PWP__REV-A.1_.las									
13420.00	90.14	87.78	6997.98	6512.83	-1236.09	6407.83	40.4390768	-104.8112232	0.00
13520.00	90.14	87.78	6997.74	6611.46	-1232.22	6507.76	40.4390873	-104.8108642	0.00
13620.00	90.14	87.78	6997.51	6710.08	-1228.35	6607.68	40.4390979	-104.8105052	0.00
13720.00	90.14	87.78	6997.27	6808.71	-1224.47	6707.61	40.4391084	-104.8101462	0.00
13820.00	90.14	87.78	6997.03	6907.34	-1220.60	6807.53	40.4391190	-104.8097873	0.00
13920.00	90.14	87.78	6996.79	7005.97	-1216.73	6907.46	40.4391295	-104.8094283	0.00
14020.00	90.14	87.78	6996.55	7104.60	-1212.86	7007.38	40.4391400	-104.8090693	0.00
14120.00	90.14	87.78	6996.31	7203.23	-1208.99	7107.30	40.4391506	-104.8087103	0.00
14220.00	90.14	87.78	6996.07	7301.85	-1205.12	7207.23	40.4391611	-104.8083513	0.00
14320.00	90.14	87.78	6995.84	7400.48	-1201.25	7307.15	40.4391717	-104.8079924	0.00
14420.00	90.14	87.78	6995.60	7499.11	-1197.38	7407.08	40.4391822	-104.8076334	0.00
14520.00	90.14	87.78	6995.36	7597.74	-1193.51	7507.00	40.4391928	-104.8072744	0.00
14620.00	90.14	87.78	6995.12	7696.37	-1189.64	7606.93	40.4392033	-104.8069154	0.00
14720.00	90.14	87.78	6994.88	7794.99	-1185.77	7706.85	40.4392138	-104.8065564	0.00
14820.00	90.14	87.78	6994.64	7893.62	-1181.90	7806.78	40.4392244	-104.8061975	0.00
14920.00	90.14	87.78	6994.40	7992.25	-1178.03	7906.70	40.4392349	-104.8058385	0.00
15020.00	90.14	87.78	6994.17	8090.88	-1174.16	8006.63	40.4392455	-104.8054795	0.00
15120.00	90.14	87.78	6993.93	8189.51	-1170.29	8106.55	40.4392560	-104.8051205	0.00
15220.00	90.14	87.78	6993.69	8288.13	-1166.42	8206.48	40.4392665	-104.8047615	0.00
15320.00	90.14	87.78	6993.45	8386.76	-1162.55	8306.40	40.4392771	-104.8044026	0.00
15420.00	90.14	87.78	6993.21	8485.39	-1158.68	8406.33	40.4392876	-104.8040436	0.00
15520.00	90.14	87.78	6992.97	8584.02	-1154.81	8506.25	40.4392981	-104.8036846	0.00
15620.00	90.14	87.78	6992.73	8682.65	-1150.94	8606.18	40.4393086	-104.8033256	0.00
15720.00	90.14	87.78	6992.49	8781.28	-1147.07	8706.10	40.4393192	-104.8029666	0.00
15820.00	90.14	87.78	6992.26	8879.90	-1143.20	8806.03	40.4393297	-104.8026076	0.00
15920.00	90.14	87.78	6992.02	8978.53	-1139.33	8905.95	40.4393402	-104.8022487	0.00
15927.43	90.14	87.78	6992.00	8985.86	-1139.04	8913.37	40.4393410	-104.8022220	0.00



Planned Wellpath Report

ORR 14N-32C-M PWP (REV-A.1)

Page 1 of 9



REFERENCE WELLPATH IDENTIFICATION

Operator	SYNERGY RESOURCES CORPORATION	Slot	SLOT#04 ORR 14N-32C-M (2258'FSL & 474'FEL, SEC.36)
Area	COLORADO	Well	ORR 14N-32C-M
Field	WELD COUNTY (NAD83,TRUE NORTH)	Wellbore	ORR 14N-32C-M PWB
Facility	SEC.36-T06N-R67W		

REPORT SETUP INFORMATION

Projection System	NAD83 / Lambert Colorado SP, Northern Zone (501), US feet	Software System	WellArchitect® 5.0
North Reference	True	User	Guenaler
Scale	0.999962	Report Generated	10/25/2016 at 7:01:16 PM
Convergence at slot	0.44° East	Database/Source file	WA_DEN_Denver_Defn/ORR_14N-32C-M_PWP__REV-A.1_.xml

WELLPATH LOCATION

	Local coordinates		Grid coordinates		Geographic coordinates	
	North[ft]	East[ft]	Easting[US ft]	Northing[US ft]	Latitude	Longitude
Slot Location	-0.40	60.08	3185302.30	1404728.47	40°26'32.899"N	104°50'03.275"W
Facility Reference Pt			3185242.22	1404728.43	40°26'32.903"N	104°50'04.052"W
Field Reference Pt			3171284.48	1426358.81	40°30'07.643"N	104°53'02.634"W

WELLPATH DATUM

Calculation method	Minimum curvature	PRECISION 462 (20'KB) (RKB) to Facility Vertical Datum	4744.00ft
Horizontal Reference Pt	Slot	PRECISION 462 (20'KB) (RKB) to Mean Sea Level	4744.00ft
Vertical Reference Pt	PRECISION 462 (20'KB) (RKB)	PRECISION 462 (20'KB) (RKB) to Mud Line at Slot (SLOT#04 ORR 14N-32C-M (2258'FSL & 474'FEL, SEC.36))	4744.00ft
MD Reference Pt	PRECISION 462 (20'KB) (RKB)	Section Origin	N 0.00, E 0.00 ft
Field Vertical Reference	Mean Sea Level	Section Azimuth	97.28°



Planned Wellpath Report

ORR 14N-32C-M PWP (REV-A.1)

Page 2 of 9



REFERENCE WELLPATH IDENTIFICATION

Operator	SYNERGY RESOURCES CORPORATION	Slot	SLOT#04 ORR 14N-32C-M (2258'FSL & 474'FEL, SEC.36)
Area	COLORADO	Well	ORR 14N-32C-M
Field	WELD COUNTY (NAD83,TRUE NORTH)	Wellbore	ORR 14N-32C-M PWB
Facility	SEC.36-T06N-R67W		

WELLPATH DATA (169 stations) † = interpolated/extrapolated station

MD [ft]	Inclination [°]	Azimuth [°]	TVD [ft]	Vert Sect [ft]	North [ft]	East [ft]	Latitude	Longitude	DLS [°/100ft]	Comments
0.00†	0.000	184.471	0.00	0.00	0.00	0.00	40°26'32.899"N	104°50'03.275"W	0.00	
20.00	0.000	184.471	20.00	0.00	0.00	0.00	40°26'32.899"N	104°50'03.275"W	0.00	Tie On
120.00†	0.000	184.471	120.00	0.00	0.00	0.00	40°26'32.899"N	104°50'03.275"W	0.00	
220.00†	0.000	184.471	220.00	0.00	0.00	0.00	40°26'32.899"N	104°50'03.275"W	0.00	
300.00	0.000	184.471	300.00	0.00	0.00	0.00	40°26'32.899"N	104°50'03.275"W	0.00	End of Tangent
320.00†	0.400	184.471	320.00	0.00	-0.07	-0.01	40°26'32.898"N	104°50'03.275"W	2.00	
420.00†	2.400	184.471	419.96	0.12	-2.51	-0.20	40°26'32.874"N	104°50'03.278"W	2.00	
520.00†	4.400	184.471	519.78	0.41	-8.42	-0.66	40°26'32.816"N	104°50'03.284"W	2.00	
620.00†	6.400	184.471	619.33	0.88	-17.80	-1.39	40°26'32.723"N	104°50'03.293"W	2.00	
720.00†	8.400	184.471	718.50	1.51	-30.64	-2.40	40°26'32.596"N	104°50'03.306"W	2.00	
820.00†	10.400	184.471	817.15	2.31	-46.92	-3.67	40°26'32.435"N	104°50'03.322"W	2.00	
920.00†	12.400	184.471	915.17	3.28	-66.63	-5.21	40°26'32.241"N	104°50'03.342"W	2.00	
958.40	13.168	184.471	952.62	3.70	-75.10	-5.87	40°26'32.157"N	104°50'03.351"W	2.00	End of Build
1020.00†	13.168	184.471	1012.60	4.38	-89.09	-6.97	40°26'32.019"N	104°50'03.365"W	0.00	
1120.00†	13.168	184.471	1109.97	5.50	-111.80	-8.74	40°26'31.794"N	104°50'03.388"W	0.00	
1220.00†	13.168	184.471	1207.34	6.62	-134.51	-10.52	40°26'31.570"N	104°50'03.411"W	0.00	
1320.00†	13.168	184.471	1304.71	7.74	-157.22	-12.29	40°26'31.345"N	104°50'03.434"W	0.00	
1420.00†	13.168	184.471	1402.08	8.85	-179.93	-14.07	40°26'31.121"N	104°50'03.457"W	0.00	
1520.00†	13.168	184.471	1499.45	9.97	-202.64	-15.84	40°26'30.897"N	104°50'03.480"W	0.00	
1620.00†	13.168	184.471	1596.82	11.09	-225.35	-17.62	40°26'30.672"N	104°50'03.503"W	0.00	
1720.00†	13.168	184.471	1694.19	12.21	-248.07	-19.39	40°26'30.448"N	104°50'03.526"W	0.00	
1820.00†	13.168	184.471	1791.56	13.32	-270.78	-21.17	40°26'30.223"N	104°50'03.549"W	0.00	
1920.00†	13.168	184.471	1888.94	14.44	-293.49	-22.95	40°26'29.999"N	104°50'03.572"W	0.00	
2020.00†	13.168	184.471	1986.31	15.56	-316.20	-24.72	40°26'29.774"N	104°50'03.595"W	0.00	
2120.00†	13.168	184.471	2083.68	16.68	-338.91	-26.50	40°26'29.550"N	104°50'03.618"W	0.00	
2220.00†	13.168	184.471	2181.05	17.79	-361.62	-28.27	40°26'29.326"N	104°50'03.641"W	0.00	
2320.00†	13.168	184.471	2278.42	18.91	-384.33	-30.05	40°26'29.101"N	104°50'03.664"W	0.00	
2420.00†	13.168	184.471	2375.79	20.03	-407.05	-31.82	40°26'28.877"N	104°50'03.687"W	0.00	
2520.00†	13.168	184.471	2473.16	21.15	-429.76	-33.60	40°26'28.652"N	104°50'03.710"W	0.00	
2620.00†	13.168	184.471	2570.53	22.26	-452.47	-35.38	40°26'28.428"N	104°50'03.733"W	0.00	



Planned Wellpath Report

ORR 14N-32C-M PWP (REV-A.1)

Page 3 of 9



REFERENCE WELLPATH IDENTIFICATION

Operator	SYNERGY RESOURCES CORPORATION	Slot	SLOT#04 ORR 14N-32C-M (2258'FSL & 474'FEL, SEC.36)
Area	COLORADO	Well	ORR 14N-32C-M
Field	WELD COUNTY (NAD83,TRUE NORTH)	Wellbore	ORR 14N-32C-M PWB
Facility	SEC.36-T06N-R67W		

WELLPATH DATA (169 stations) † = interpolated/extrapolated station

MD [ft]	Inclination [°]	Azimuth [°]	TVD [ft]	Vert Sect [ft]	North [ft]	East [ft]	Latitude	Longitude	DLS [°/100ft]	Comments
2720.00†	13.168	184.471	2667.90	23.38	-475.18	-37.15	40°26'28.203"N	104°50'03.755"W	0.00	
2820.00†	13.168	184.471	2765.27	24.50	-497.89	-38.93	40°26'27.979"N	104°50'03.778"W	0.00	
2920.00†	13.168	184.471	2862.64	25.62	-520.60	-40.70	40°26'27.755"N	104°50'03.801"W	0.00	
3020.00†	13.168	184.471	2960.01	26.73	-543.31	-42.48	40°26'27.530"N	104°50'03.824"W	0.00	
3120.00†	13.168	184.471	3057.38	27.85	-566.02	-44.25	40°26'27.306"N	104°50'03.847"W	0.00	
3220.00†	13.168	184.471	3154.75	28.97	-588.74	-46.03	40°26'27.081"N	104°50'03.870"W	0.00	
3320.00†	13.168	184.471	3252.12	30.09	-611.45	-47.81	40°26'26.857"N	104°50'03.893"W	0.00	
3420.00†	13.168	184.471	3349.50	31.20	-634.16	-49.58	40°26'26.633"N	104°50'03.916"W	0.00	
3520.00†	13.168	184.471	3446.87	32.32	-656.87	-51.36	40°26'26.408"N	104°50'03.939"W	0.00	
3620.00†	13.168	184.471	3544.24	33.44	-679.58	-53.13	40°26'26.184"N	104°50'03.962"W	0.00	
3720.00†	13.168	184.471	3641.61	34.56	-702.29	-54.91	40°26'25.959"N	104°50'03.985"W	0.00	
3820.00†	13.168	184.471	3738.98	35.67	-725.00	-56.68	40°26'25.735"N	104°50'04.008"W	0.00	
3920.00†	13.168	184.471	3836.35	36.79	-747.71	-58.46	40°26'25.510"N	104°50'04.031"W	0.00	
4020.00†	13.168	184.471	3933.72	37.91	-770.43	-60.24	40°26'25.286"N	104°50'04.054"W	0.00	
4120.00†	13.168	184.471	4031.09	39.03	-793.14	-62.01	40°26'25.062"N	104°50'04.077"W	0.00	
4220.00†	13.168	184.471	4128.46	40.14	-815.85	-63.79	40°26'24.837"N	104°50'04.100"W	0.00	
4320.00†	13.168	184.471	4225.83	41.26	-838.56	-65.56	40°26'24.613"N	104°50'04.123"W	0.00	
4420.00†	13.168	184.471	4323.20	42.38	-861.27	-67.34	40°26'24.388"N	104°50'04.146"W	0.00	
4520.00†	13.168	184.471	4420.57	43.50	-883.98	-69.11	40°26'24.164"N	104°50'04.169"W	0.00	
4620.00†	13.168	184.471	4517.94	44.61	-906.69	-70.89	40°26'23.939"N	104°50'04.192"W	0.00	
4720.00†	13.168	184.471	4615.31	45.73	-929.40	-72.67	40°26'23.715"N	104°50'04.215"W	0.00	
4820.00†	13.168	184.471	4712.68	46.85	-952.12	-74.44	40°26'23.491"N	104°50'04.238"W	0.00	
4920.00†	13.168	184.471	4810.05	47.97	-974.83	-76.22	40°26'23.266"N	104°50'04.261"W	0.00	
5020.00†	13.168	184.471	4907.43	49.08	-997.54	-77.99	40°26'23.042"N	104°50'04.284"W	0.00	
5120.00†	13.168	184.471	5004.80	50.20	-1020.25	-79.77	40°26'22.817"N	104°50'04.307"W	0.00	
5220.00†	13.168	184.471	5102.17	51.32	-1042.96	-81.54	40°26'22.593"N	104°50'04.330"W	0.00	
5320.00†	13.168	184.471	5199.54	52.44	-1065.67	-83.32	40°26'22.368"N	104°50'04.353"W	0.00	
5420.00†	13.168	184.471	5296.91	53.55	-1088.38	-85.10	40°26'22.144"N	104°50'04.376"W	0.00	
5520.00†	13.168	184.471	5394.28	54.67	-1111.10	-86.87	40°26'21.920"N	104°50'04.398"W	0.00	
5620.00†	13.168	184.471	5491.65	55.79	-1133.81	-88.65	40°26'21.695"N	104°50'04.421"W	0.00	



Planned Wellpath Report

ORR 14N-32C-M PWP (REV-A.1)

Page 4 of 9



REFERENCE WELLPATH IDENTIFICATION

Operator	SYNERGY RESOURCES CORPORATION	Slot	SLOT#04 ORR 14N-32C-M (2258'FSL & 474'FEL, SEC.36)
Area	COLORADO	Well	ORR 14N-32C-M
Field	WELD COUNTY (NAD83,TRUE NORTH)	Wellbore	ORR 14N-32C-M PWB
Facility	SEC.36-T06N-R67W		

WELLPATH DATA (169 stations) † = interpolated/extrapolated station

MD [ft]	Inclination [°]	Azimuth [°]	TVD [ft]	Vert Sect [ft]	North [ft]	East [ft]	Latitude	Longitude	DLS [°/100ft]	Comments
5720.00†	13.168	184.471	5589.02	56.91	-1156.52	-90.42	40°26'21.471"N	104°50'04.444"W	0.00	
5820.00†	13.168	184.471	5686.39	58.02	-1179.23	-92.20	40°26'21.246"N	104°50'04.467"W	0.00	
5920.00†	13.168	184.471	5783.76	59.14	-1201.94	-93.97	40°26'21.022"N	104°50'04.490"W	0.00	
6020.00†	13.168	184.471	5881.13	60.26	-1224.65	-95.75	40°26'20.798"N	104°50'04.513"W	0.00	
6120.00†	13.168	184.471	5978.50	61.38	-1247.36	-97.52	40°26'20.573"N	104°50'04.536"W	0.00	
6220.00†	13.168	184.471	6075.87	62.49	-1270.07	-99.30	40°26'20.349"N	104°50'04.559"W	0.00	
6320.00†	13.168	184.471	6173.24	63.61	-1292.79	-101.08	40°26'20.124"N	104°50'04.582"W	0.00	
6420.00†	13.168	184.471	6270.61	64.73	-1315.50	-102.85	40°26'19.900"N	104°50'04.605"W	0.00	
6520.00†	13.168	184.471	6367.99	65.85	-1338.21	-104.63	40°26'19.675"N	104°50'04.628"W	0.00	
6527.75	13.168	184.471	6375.53	65.93	-1339.97	-104.77	40°26'19.658"N	104°50'04.630"W	0.00	End of Tangent
6620.00†	14.712	150.070	6465.21	73.55	-1360.63	-99.73	40°26'19.454"N	104°50'04.565"W	9.00	
6720.00†	20.398	126.490	6560.64	96.48	-1382.04	-79.34	40°26'19.242"N	104°50'04.301"W	9.00	
6820.00†	27.835	113.923	6651.90	134.14	-1401.92	-43.92	40°26'19.046"N	104°50'03.843"W	9.00	
6920.00†	35.951	106.502	6736.77	185.59	-1419.76	5.67	40°26'18.870"N	104°50'03.202"W	9.00	
6946.61†	38.171	105.008	6758.00	201.45	-1424.11	21.10	40°26'18.827"N	104°50'03.002"W	9.00	SHARON SPRINGS
6996.42†	42.369	102.573	6796.00	233.43	-1431.75	52.37	40°26'18.751"N	104°50'02.598"W	9.00	NIO-A
7020.00†	44.373	101.554	6813.14	249.57	-1435.13	68.20	40°26'18.718"N	104°50'02.393"W	9.00	
7120.00†	52.951	97.917	6879.14	324.49	-1447.66	142.14	40°26'18.594"N	104°50'01.437"W	9.00	
7191.38†	59.131	95.798	6919.00	383.67	-1454.68	200.89	40°26'18.524"N	104°50'00.677"W	9.00	NIO-B
7220.00†	61.618	95.026	6933.15	408.53	-1457.03	225.66	40°26'18.501"N	104°50'00.357"W	9.00	
7320.00†	70.336	92.577	6973.82	499.60	-1463.01	316.70	40°26'18.442"N	104°49'59.179"W	9.00	
7420.00†	79.084	90.382	7000.17	595.46	-1465.46	413.03	40°26'18.418"N	104°49'57.933"W	9.00	
7520.00†	87.847	88.314	7011.54	693.75	-1464.32	512.27	40°26'18.429"N	104°49'56.650"W	9.00	
7546.12	90.137	87.782	7012.00†	719.53	-1463.43	538.37	40°26'18.438"N	104°49'56.312"W	9.00	End of 3D Arc
7620.00†	90.137	87.782	7011.82	792.40	-1460.57	612.19	40°26'18.466"N	104°49'55.358"W	0.00	
7720.00†	90.137	87.782	7011.59	891.02	-1456.70	712.12	40°26'18.504"N	104°49'54.065"W	0.00	
7820.00†	90.137	87.782	7011.35	989.65	-1452.83	812.04	40°26'18.543"N	104°49'52.773"W	0.00	
7920.00†	90.137	87.782	7011.11	1088.28	-1448.96	911.97	40°26'18.581"N	104°49'51.481"W	0.00	
8020.00†	90.137	87.782	7010.87	1186.91	-1445.08	1011.89	40°26'18.619"N	104°49'50.188"W	0.00	
8120.00†	90.137	87.782	7010.63	1285.54	-1441.21	1111.82	40°26'18.657"N	104°49'48.896"W	0.00	



Planned Wellpath Report

ORR 14N-32C-M PWP (REV-A.1)

Page 5 of 9



REFERENCE WELLPATH IDENTIFICATION

Operator	SYNERGY RESOURCES CORPORATION	Slot	SLOT#04 ORR 14N-32C-M (2258'FSL & 474'FEL, SEC.36)
Area	COLORADO	Well	ORR 14N-32C-M
Field	WELD COUNTY (NAD83,TRUE NORTH)	Wellbore	ORR 14N-32C-M PWB
Facility	SEC.36-T06N-R67W		

WELLPATH DATA (169 stations) † = interpolated/extrapolated station

MD [ft]	Inclination [°]	Azimuth [°]	TVD [ft]	Vert Sect [ft]	North [ft]	East [ft]	Latitude	Longitude	DLS [°/100ft]	Comments
8220.00†	90.137	87.782	7010.39	1384.16	-1437.34	1211.74	40°26'18.695"N	104°49'47.604"W	0.00	
8320.00†	90.137	87.782	7010.15	1482.79	-1433.47	1311.67	40°26'18.734"N	104°49'46.312"W	0.00	
8420.00†	90.137	87.782	7009.91	1581.42	-1429.60	1411.59	40°26'18.772"N	104°49'45.019"W	0.00	
8520.00†	90.137	87.782	7009.68	1680.05	-1425.73	1511.52	40°26'18.810"N	104°49'43.727"W	0.00	
8620.00†	90.137	87.782	7009.44	1778.68	-1421.86	1611.44	40°26'18.848"N	104°49'42.435"W	0.00	
8720.00†	90.137	87.782	7009.20	1877.31	-1417.99	1711.37	40°26'18.886"N	104°49'41.142"W	0.00	
8820.00†	90.137	87.782	7008.96	1975.93	-1414.12	1811.29	40°26'18.925"N	104°49'39.850"W	0.00	
8920.00†	90.137	87.782	7008.72	2074.56	-1410.25	1911.22	40°26'18.963"N	104°49'38.558"W	0.00	
9020.00†	90.137	87.782	7008.48	2173.19	-1406.38	2011.14	40°26'19.001"N	104°49'37.265"W	0.00	
9120.00†	90.137	87.782	7008.24	2271.82	-1402.51	2111.07	40°26'19.039"N	104°49'35.973"W	0.00	
9220.00†	90.137	87.782	7008.01	2370.45	-1398.64	2210.99	40°26'19.077"N	104°49'34.681"W	0.00	
9320.00†	90.137	87.782	7007.77	2469.07	-1394.77	2310.92	40°26'19.115"N	104°49'33.388"W	0.00	
9420.00†	90.137	87.782	7007.53	2567.70	-1390.90	2410.84	40°26'19.154"N	104°49'32.096"W	0.00	
9520.00†	90.137	87.782	7007.29	2666.33	-1387.03	2510.76	40°26'19.192"N	104°49'30.804"W	0.00	
9620.00†	90.137	87.782	7007.05	2764.96	-1383.16	2610.69	40°26'19.230"N	104°49'29.512"W	0.00	
9720.00†	90.137	87.782	7006.81	2863.59	-1379.29	2710.61	40°26'19.268"N	104°49'28.219"W	0.00	
9820.00†	90.137	87.782	7006.57	2962.21	-1375.42	2810.54	40°26'19.306"N	104°49'26.927"W	0.00	
9920.00†	90.137	87.782	7006.34	3060.84	-1371.55	2910.46	40°26'19.344"N	104°49'25.635"W	0.00	
10020.00†	90.137	87.782	7006.10	3159.47	-1367.68	3010.39	40°26'19.382"N	104°49'24.342"W	0.00	
10120.00†	90.137	87.782	7005.86	3258.10	-1363.81	3110.31	40°26'19.421"N	104°49'23.050"W	0.00	
10220.00†	90.137	87.782	7005.62	3356.73	-1359.94	3210.24	40°26'19.459"N	104°49'21.758"W	0.00	
10320.00†	90.137	87.782	7005.38	3455.36	-1356.07	3310.16	40°26'19.497"N	104°49'20.465"W	0.00	
10420.00†	90.137	87.782	7005.14	3553.98	-1352.20	3410.09	40°26'19.535"N	104°49'19.173"W	0.00	
10520.00†	90.137	87.782	7004.90	3652.61	-1348.33	3510.01	40°26'19.573"N	104°49'17.881"W	0.00	
10620.00†	90.137	87.782	7004.66	3751.24	-1344.46	3609.94	40°26'19.611"N	104°49'16.588"W	0.00	
10720.00†	90.137	87.782	7004.43	3849.87	-1340.59	3709.86	40°26'19.649"N	104°49'15.296"W	0.00	
10820.00†	90.137	87.782	7004.19	3948.50	-1336.72	3809.79	40°26'19.687"N	104°49'14.004"W	0.00	
10920.00†	90.137	87.782	7003.95	4047.12	-1332.84	3909.71	40°26'19.725"N	104°49'12.711"W	0.00	
11020.00†	90.137	87.782	7003.71	4145.75	-1328.97	4009.64	40°26'19.763"N	104°49'11.419"W	0.00	
11120.00†	90.137	87.782	7003.47	4244.38	-1325.10	4109.56	40°26'19.802"N	104°49'10.127"W	0.00	



Planned Wellpath Report

ORR 14N-32C-M PWP (REV-A.1)

Page 6 of 9



REFERENCE WELLPATH IDENTIFICATION

Operator	SYNERGY RESOURCES CORPORATION	Slot	SLOT#04 ORR 14N-32C-M (2258'FSL & 474'FEL, SEC.36)
Area	COLORADO	Well	ORR 14N-32C-M
Field	WELD COUNTY (NAD83,TRUE NORTH)	Wellbore	ORR 14N-32C-M PWB
Facility	SEC.36-T06N-R67W		

WELLPATH DATA (169 stations) † = interpolated/extrapolated station

MD [ft]	Inclination [°]	Azimuth [°]	TVD [ft]	Vert Sect [ft]	North [ft]	East [ft]	Latitude	Longitude	DLS [°/100ft]	Comments
11220.00†	90.137	87.782	7003.23	4343.01	-1321.23	4209.49	40°26'19.840"N	104°49'08.835"W	0.00	
11320.00†	90.137	87.782	7002.99	4441.64	-1317.36	4309.41	40°26'19.878"N	104°49'07.542"W	0.00	
11420.00†	90.137	87.782	7002.76	4540.27	-1313.49	4409.34	40°26'19.916"N	104°49'06.250"W	0.00	
11520.00†	90.137	87.782	7002.52	4638.89	-1309.62	4509.26	40°26'19.954"N	104°49'04.958"W	0.00	
11620.00†	90.137	87.782	7002.28	4737.52	-1305.75	4609.19	40°26'19.992"N	104°49'03.665"W	0.00	
11720.00†	90.137	87.782	7002.04	4836.15	-1301.88	4709.11	40°26'20.030"N	104°49'02.373"W	0.00	
11820.00†	90.137	87.782	7001.80	4934.78	-1298.01	4809.03	40°26'20.068"N	104°49'01.081"W	0.00	
11920.00†	90.137	87.782	7001.56	5033.41	-1294.14	4908.96	40°26'20.106"N	104°48'59.788"W	0.00	
12020.00†	90.137	87.782	7001.32	5132.03	-1290.27	5008.88	40°26'20.144"N	104°48'58.496"W	0.00	
12120.00†	90.137	87.782	7001.09	5230.66	-1286.40	5108.81	40°26'20.182"N	104°48'57.204"W	0.00	
12220.00†	90.137	87.782	7000.85	5329.29	-1282.53	5208.73	40°26'20.220"N	104°48'55.911"W	0.00	
12320.00†	90.137	87.782	7000.61	5427.92	-1278.66	5308.66	40°26'20.258"N	104°48'54.619"W	0.00	
12420.00†	90.137	87.782	7000.37	5526.55	-1274.79	5408.58	40°26'20.296"N	104°48'53.327"W	0.00	
12520.00†	90.137	87.782	7000.13	5625.17	-1270.92	5508.51	40°26'20.334"N	104°48'52.034"W	0.00	
12620.00†	90.137	87.782	6999.89	5723.80	-1267.05	5608.43	40°26'20.372"N	104°48'50.742"W	0.00	
12720.00†	90.137	87.782	6999.65	5822.43	-1263.18	5708.36	40°26'20.410"N	104°48'49.450"W	0.00	
12820.00†	90.137	87.782	6999.42	5921.06	-1259.31	5808.28	40°26'20.448"N	104°48'48.157"W	0.00	
12920.00†	90.137	87.782	6999.18	6019.69	-1255.44	5908.21	40°26'20.486"N	104°48'46.865"W	0.00	
13020.00†	90.137	87.782	6998.94	6118.32	-1251.57	6008.13	40°26'20.524"N	104°48'45.573"W	0.00	
13120.00†	90.137	87.782	6998.70	6216.94	-1247.70	6108.06	40°26'20.562"N	104°48'44.280"W	0.00	
13220.00†	90.137	87.782	6998.46	6315.57	-1243.83	6207.98	40°26'20.600"N	104°48'42.988"W	0.00	
13320.00†	90.137	87.782	6998.22	6414.20	-1239.96	6307.91	40°26'20.638"N	104°48'41.696"W	0.00	
13420.00†	90.137	87.782	6997.98	6512.83	-1236.09	6407.83	40°26'20.676"N	104°48'40.403"W	0.00	
13520.00†	90.137	87.782	6997.74	6611.46	-1232.22	6507.76	40°26'20.714"N	104°48'39.111"W	0.00	
13620.00†	90.137	87.782	6997.51	6710.08	-1228.35	6607.68	40°26'20.752"N	104°48'37.819"W	0.00	
13720.00†	90.137	87.782	6997.27	6808.71	-1224.47	6707.61	40°26'20.790"N	104°48'36.526"W	0.00	
13820.00†	90.137	87.782	6997.03	6907.34	-1220.60	6807.53	40°26'20.828"N	104°48'35.234"W	0.00	
13920.00†	90.137	87.782	6996.79	7005.97	-1216.73	6907.46	40°26'20.866"N	104°48'33.942"W	0.00	
14020.00†	90.137	87.782	6996.55	7104.60	-1212.86	7007.38	40°26'20.904"N	104°48'32.649"W	0.00	
14120.00†	90.137	87.782	6996.31	7203.23	-1208.99	7107.30	40°26'20.942"N	104°48'31.357"W	0.00	



Planned Wellpath Report

ORR 14N-32C-M PWP (REV-A.1)

Page 7 of 9



REFERENCE WELLPATH IDENTIFICATION

Operator	SYNERGY RESOURCES CORPORATION	Slot	SLOT#04 ORR 14N-32C-M (2258'FSL & 474'FEL, SEC.36)
Area	COLORADO	Well	ORR 14N-32C-M
Field	WELD COUNTY (NAD83,TRUE NORTH)	Wellbore	ORR 14N-32C-M PWB
Facility	SEC.36-T06N-R67W		

WELLPATH DATA (169 stations) † = interpolated/extrapolated station

MD [ft]	Inclination [°]	Azimuth [°]	TVD [ft]	Vert Sect [ft]	North [ft]	East [ft]	Latitude	Longitude	DLS [°/100ft]	Comments
14220.00†	90.137	87.782	6996.07	7301.85	-1205.12	7207.23	40°26'20.980"N	104°48'30.065"W	0.00	
14320.00†	90.137	87.782	6995.84	7400.48	-1201.25	7307.15	40°26'21.018"N	104°48'28.773"W	0.00	
14420.00†	90.137	87.782	6995.60	7499.11	-1197.38	7407.08	40°26'21.056"N	104°48'27.480"W	0.00	
14520.00†	90.137	87.782	6995.36	7597.74	-1193.51	7507.00	40°26'21.094"N	104°48'26.188"W	0.00	
14620.00†	90.137	87.782	6995.12	7696.37	-1189.64	7606.93	40°26'21.132"N	104°48'24.896"W	0.00	
14720.00†	90.137	87.782	6994.88	7794.99	-1185.77	7706.85	40°26'21.170"N	104°48'23.603"W	0.00	
14820.00†	90.137	87.782	6994.64	7893.62	-1181.90	7806.78	40°26'21.208"N	104°48'22.311"W	0.00	
14920.00†	90.137	87.782	6994.40	7992.25	-1178.03	7906.70	40°26'21.246"N	104°48'21.019"W	0.00	
15020.00†	90.137	87.782	6994.17	8090.88	-1174.16	8006.63	40°26'21.284"N	104°48'19.726"W	0.00	
15120.00†	90.137	87.782	6993.93	8189.51	-1170.29	8106.55	40°26'21.322"N	104°48'18.434"W	0.00	
15220.00†	90.137	87.782	6993.69	8288.13	-1166.42	8206.48	40°26'21.359"N	104°48'17.142"W	0.00	
15320.00†	90.137	87.782	6993.45	8386.76	-1162.55	8306.40	40°26'21.397"N	104°48'15.849"W	0.00	
15420.00†	90.137	87.782	6993.21	8485.39	-1158.68	8406.33	40°26'21.435"N	104°48'14.557"W	0.00	
15520.00†	90.137	87.782	6992.97	8584.02	-1154.81	8506.25	40°26'21.473"N	104°48'13.265"W	0.00	
15620.00†	90.137	87.782	6992.73	8682.65	-1150.94	8606.18	40°26'21.511"N	104°48'11.972"W	0.00	
15720.00†	90.137	87.782	6992.49	8781.28	-1147.07	8706.10	40°26'21.549"N	104°48'10.680"W	0.00	
15820.00†	90.137	87.782	6992.26	8879.90	-1143.20	8806.03	40°26'21.587"N	104°48'09.388"W	0.00	
15920.00†	90.137	87.782	6992.02	8978.53	-1139.33	8905.95	40°26'21.625"N	104°48'08.095"W	0.00	
15927.43	90.137	87.782	6992.00 ²	8985.86	-1139.04	8913.37	40°26'21.628"N	104°48'07.999"W	0.00	End of Tangent

HOLE & CASING SECTIONS

- Ref Wellbore: ORR 14N-32C-M PWB Ref Wellpath: ORR 14N-32C-M PWP (REV-A.1)

String/Diameter	Start MD [ft]	End MD [ft]	Interval [ft]	Start TVD [ft]	End TVD [ft]	Start N/S [ft]	Start E/W [ft]	End N/S [ft]	End E/W [ft]
13.5in Open Hole	20.00	1800.00	1780.00	20.00	1772.09	0.00	0.00	-266.24	-20.82
8.5in Open Hole	1800.00	16000.00	14200.00	1772.09	N/A	-266.24	-20.82	N/A	N/A



Planned Wellpath Report

ORR 14N-32C-M PWP (REV-A.1)

Page 8 of 9



REFERENCE WELLPATH IDENTIFICATION

Operator	SYNERGY RESOURCES CORPORATION	Slot	SLOT#04 ORR 14N-32C-M (2258'FSL & 474'FEL, SEC.36)
Area	COLORADO	Well	ORR 14N-32C-M
Field	WELD COUNTY (NAD83,TRUE NORTH)	Wellbore	ORR 14N-32C-M PWB
Facility	SEC.36-T06N-R67W		

TARGETS

Name	MD [ft]	TVD [ft]	North [ft]	East [ft]	Grid East [US ft]	Grid North [US ft]	Latitude	Longitude	Shape
SEC.31-T06N-R66W		0.00	0.40	-60.08	3185242.22	1404728.43	40°26'32.903"N	104°50'04.052"W	polygon
SEC.31-T06N-R67W		0.00	0.40	-60.08	3185242.22	1404728.43	40°26'32.903"N	104°50'04.052"W	point
SEC.32-T06N-R66W		0.00	0.40	-60.08	3185242.22	1404728.43	40°26'32.903"N	104°50'04.052"W	polygon
SEC.32-T06N-R67W		0.00	0.40	-60.08	3185242.22	1404728.43	40°26'32.903"N	104°50'04.052"W	point
SEC.35-T06N-R67W		0.00	0.40	-60.08	3185242.22	1404728.43	40°26'32.903"N	104°50'04.052"W	polygon
SEC.36-T06N-R67W		0.00	0.40	-60.08	3185242.22	1404728.43	40°26'32.903"N	104°50'04.052"W	polygon
2) ORR 14N-32C-L BHL ON PLAT REV-1 (790'FSL &2580'FWL, SEC.32)	15927.43	6992.00	-1139.04	8913.37	3194223.62	1403656.43	40°26'21.628"N	104°48'07.999"W	circle
1) ORR 14N-32C-L ENTRY POINT (817'FSL & 75'FWL, SEC.31)	7546.12	7012.00	-1463.43	538.37	3185851.62	1403269.19	40°26'18.438"N	104°49'56.312"W	circle
SEC.31/21-T06N-R67W 460' SETBACK		7112.00	0.40	-60.08	3185242.22	1404728.43	40°26'32.903"N	104°50'04.052"W	point

SURVEY PROGRAM - Ref Wellbore: ORR 14N-32C-M PWB Ref Wellpath: ORR 14N-32C-M PWP (REV-A.1)

Start MD [ft]	End MD [ft]	Positional Uncertainty Model	Log Name/Comment	Wellbore
20.00	15927.43	BHI NaviTrak (Standard)		ORR 14N-32C-M PWB



Planned Wellpath Report

ORR 14N-32C-M PWP (REV-A.1)

Page 9 of 9



REFERENCE WELLPATH IDENTIFICATION

Operator	SYNERGY RESOURCES CORPORATION	Slot	SLOT#04 ORR 14N-32C-M (2258'FSL & 474'FEL, SEC.36)
Area	COLORADO	Well	ORR 14N-32C-M
Field	WELD COUNTY (NAD83,TRUE NORTH)	Wellbore	ORR 14N-32C-M PWB
Facility	SEC.36-T06N-R67W		

WELLPATH COMMENTS

MD [ft]	Inclination [°]	Azimuth [°]	TVD [ft]	Comment
6946.61	38.171	105.008	6758.00	SHARON SPRINGS
6996.42	42.369	102.573	6796.00	NIO-A
7191.38	59.131	95.798	6919.00	NIO-B

DESIGN COMMENTS

MD [ft]	Inclination [°]	Azimuth [°]	TVD [ft]	Comment
20.00	0.000	184.471	20.00	Tie On
300.00	0.000	184.471	300.00	End of Tangent
958.40	13.168	184.471	952.62	End of Build
6527.75	13.168	184.471	6375.53	End of Tangent
7546.12	90.137	87.782	7012.00	End of 3D Arc
15927.43	90.137	87.782	6992.00	End of Tangent