

SYNERGY RESOURCES CORPORATION

Location: COLORADO Slot: SLOT#19 ORR STATE 23C-35-M (2149'FSL & 234'FEL, SEC.36)
 Field: WELD COUNTY (NAD83, TRUE NORTH) Well: ORR STATE 23C-35-M
 Facility: SEC.36-T06N-R67W Wellbore: ORR STATE 23C-35-M PWB

Plot reference wellpath is ORR STATE 23C-35-M PWP (REV-A.0)

True vertical depths are referenced to PRECISION 562 (25KB) (RKB)	Grid System: NAD83 / Lambert Colorado SP, Northern Zone (501), US feet
Measured depths are referenced to PRECISION 562 (25KB) (RKB)	* = Wellpath was transformed from a different geodetic datum
PRECISION 562 (25KB) (RKB) to Mean Sea Level: 4749 feet	North Reference: True north
Mean Sea Level to Mud line (At Slot: SLOT#19 ORR STATE 23C-35-M (2149'FSL & 234'FEL, SEC.36)): 0 feet	Scale: True distance
Coordinates are in feet referenced to Slot	Depths are in feet
	Created by: wagnjam on 2016-10-13
	Database: WA_DEN_Denver_Defn

Location Information

Facility Name	Grid East (US ft)	Grid North (US ft)	Latitude	Longitude		
SEC.36-T06N-R67W	3185242.222	1404728.428	40°26'32.903"N	104°50'04.052"W		
Slot	Local N (ft)	Local E (ft)	Grid East (US ft)	Grid North (US ft)	Latitude	Longitude
SLOT#19 ORR STATE 23C-35-M (2149'FSL & 234'FEL, SEC.36)	-122.04	299.22	3185542.342	1404608.639	40°26'31.697"N	104°50'00.182"W
PRECISION 562 (25KB) (RKB) to Mud line (At Slot: SLOT#19 ORR STATE 23C-35-M (2149'FSL & 234'FEL, SEC.36))					4749ft	
Mean Sea Level to Mud line (At Slot: SLOT#19 ORR STATE 23C-35-M (2149'FSL & 234'FEL, SEC.36))					0ft	
PRECISION 562 (25KB) (RKB) to Mean Sea Level					4749ft	

Tie-On Position

MD (ft)	Inc (°)	Az (°)	TVD (ft)	Local N (ft)	Local E (ft)	Grid East (US ft)	Grid North (US ft)	Latitude	Longitude
25.00	0.000	136.086	25.00	0.00	0.00	3185542.34	1404608.64	40°26'31.697"N	104°50'00.182"W

Wellpath Comments

MD (ft)	X (ft)	Y (ft)	TVD (ft)	Inclination (°)	Azimuth (°)	VS (ft)	Comment
6859.61	728.02	-863.49	6741.00	26.533	253.577	-593.71	SHARON SPRINGS
6902.81	708.20	-868.86	6779.00	30.254	255.952	-573.31	NIO-A
7057.16	617.25	-886.38	6902.00	43.766	261.388	-480.78	NIO-B
7167.80	534.96	-896.91	6975.00	53.554	263.838	-397.84	NIO-C
7376.83	350.36	-910.99	7070.00	72.137	267.159	-213.17	FORT HAYS

Well Profile Data

Design Comment	MD (ft)	Inc (°)	Az (°)	TVD (ft)	Local N (ft)	Local E (ft)	DLS (°/100ft)	VS (ft)
Tie On	25.00	0.000	136.086	25.00	0.00	0.00	0.00	0.00
End of Tangent	225.00	0.000	136.086	225.00	0.00	0.00	0.00	0.00
End of Build	768.06	10.861	136.086	764.82	-36.97	35.59	2.00	-29.80
End of Tangent	6494.26	10.861	136.086	6388.43	-814.26	783.96	0.00	-656.26
End of 3D Arc	7578.26	90.088	269.736	7101.00	-916.25	152.25	9.00	-16.42
End of Tangent	14123.10	90.088	269.736	7091.00	-946.39	-6392.51	0.00	6462.19

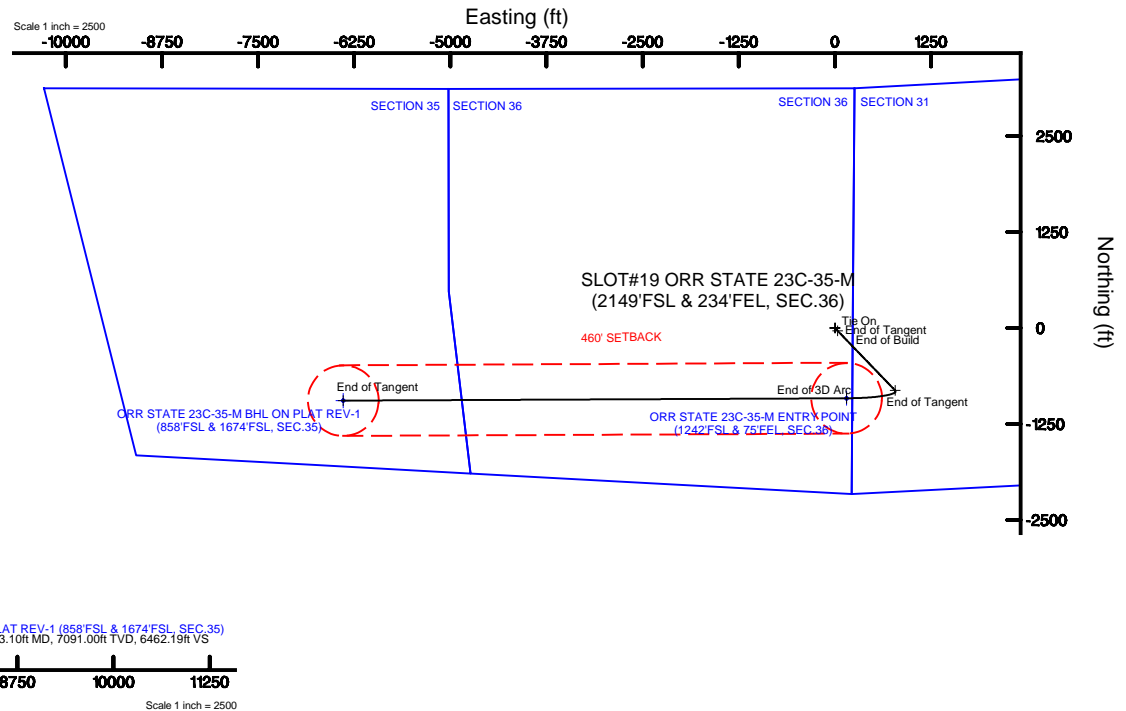
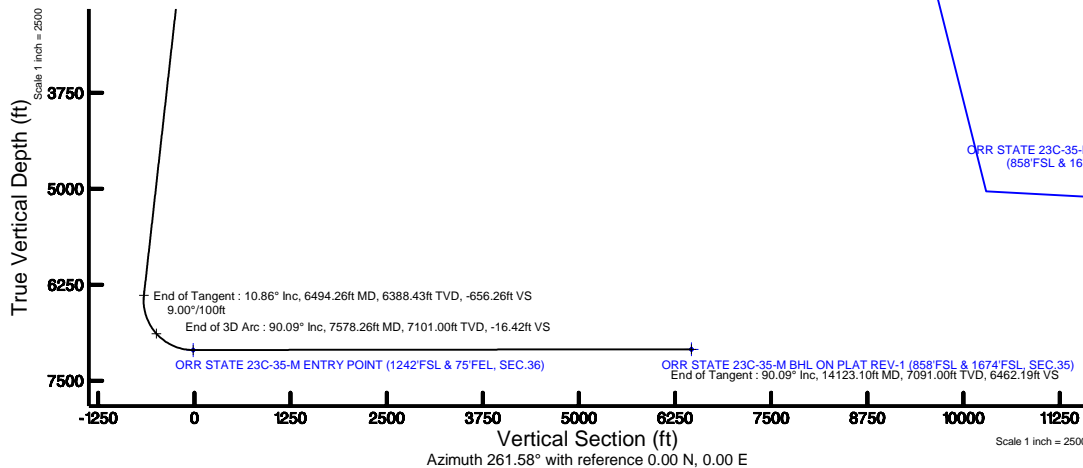
Targets

Name	MD (ft)	TVD (ft)	Local N (ft)	Local E (ft)	Grid East (US ft)	Grid North (US ft)	Latitude	Longitude
SEC.31-T06N-R66W	5.00	5.00	122.05	-299.22	3185242.22	1404728.43	40°26'32.903"N	104°50'04.052"W
SEC.31-T06N-R67W	5.00	5.00	122.05	-299.22	3185242.22	1404728.43	40°26'32.903"N	104°50'04.052"W
SEC.32-T06N-R66W	5.00	5.00	122.05	-299.22	3185242.22	1404728.43	40°26'32.903"N	104°50'04.052"W
SEC.32-T06N-R67W	5.00	5.00	122.05	-299.22	3185242.22	1404728.43	40°26'32.903"N	104°50'04.052"W
SEC.35-T06N-R67W	5.00	5.00	122.05	-299.22	3185242.22	1404728.43	40°26'32.903"N	104°50'04.052"W
SEC.36-T06N-R67W	5.00	5.00	122.05	-299.22	3185242.22	1404728.43	40°26'32.903"N	104°50'04.052"W
ORR STATE 23C-35-M BHL ON PLAT REV-1 (858'FSL & 1674'FSL, SEC.35)	14123.10	7091.00	-946.39	-6392.51	3179157.38	1403614.26	40°26'22.337"N	104°51'22.856"W
ORR STATE 23C-35-M ENTRY POINT (1242'FSL & 75'FEL, SEC.36)	7578.26	7101.00	-916.25	152.25	3185701.47	1403693.59	40°26'22.643"N	104°49'58.213"W
SEC.3121-T06N-R67W-460 SETBACK	7117.00	122.05	-299.22	-299.22	3185242.22	1404728.43	40°26'32.903"N	104°50'04.052"W



BGGM (1900.0 to 2018.0) Dip: 66.91° Field: 52526 nT
 Magnetic North is 8.49 degrees East of True North (at 9/29/2016)

To correct azimuth from Magnetic to True add 8.49 degrees



ORR_STATE_23C-35-M_PWP__REV-A.0_.las

~VERSION INFORMATION

VERS. 2.0 : CWLS LOG ASCII STANDARD-VERSION 2.0
 WRAP. NO : ASCII DATA SECTION CONTAINS ONE ROW PER WELLPATH STATION

~WELL INFORMATION

#MNEM	.UNITS	DATA	:DESCRIPTION
#----	.-----	----	:-----
STRT	.ft	0.00	:START MD
STOP	.ft	14123.10	:STOP MD
STEP	.ft	0.0	:STEP (non-uniform
increment)			
NULL	.	-999.99	:NULL
COMP	.	SYNERGY RESOURCES CORPORATION	:OPERATOR
WELL	.	ORR STATE 23C-35-M	:WELL
FLD	.	WELD COUNTY (NAD83,TRUE NORTH)	:FIELD
LOC	.	COLORADO	:AREA (aka: Location)
CNTY	.	N/A	:COUNTY
STAT	.	N/A	:STATE
CTRY	.	N/A	:COUNTRY
SRVC	.	Baker Hughes	:CONTRACTOR
DATE	.	09/29/2016	:LOG REV DATE
API	.		:API NUMBER

~OTHER INFORMATION

#Software: WellArchitect(R) Version 5.0

#MNEM	.UNITS	DATA	:DESCRIPTION
#----	.-----	----	:-----
WPTYPE	.	PLANNED WELLPATH	:WELLPATH TYPE
FACILITY	.	SEC.36-T06N-R67W	:FACILITY
SLOT	.	SLOT#19 ORR STATE 23C-35-M (2149'FSL & 234'FEL, SEC.36)	:SLOT
WELLBORE	.	ORR STATE 23C-35-M PWB	:WELLBORE
WELLPATH	.	ORR STATE 23C-35-M PWP (REV-A.0)	:WELLPATH
MDREFPT	.	PRECISION 562 (25'KB) (RKB)	:MD REFERENCE POINT
TVDREFPT	.	PRECISION 562 (25'KB) (RKB)	:TVD REFERENCE POINT
LCLREFPT	.	Slot	:LOCAL COORDINATE
REFERENCE PT			
VSAZIMUTH.deg		261.58	:VERTICAL SECTION
AZIMUTH			
VSORIGN	.ft	0.00	:VERTICAL SECTION ORIGIN
NORTH			
VSORIGE	.ft	0.00	:VERTICAL SECTION ORIGIN
EAST			

~CURVE (WELLPATH) INFORMATION

#MNEM	.UNITS	:DESCRIPTION
#----	.-----	:-----
DEPT	.ft	:MEASURED DEPTH
INC	.deg	:INCLINATION
AZI	.deg	:AZIMUTH
TVD	.ft	:TRUE VERTICAL DEPTH
SECT	.ft	:CROSS SECTION (CURTAIN/VERTICAL)
LOCALN	.ft	:LOCAL NORTH
LOCALE	.ft	:LOCAL EAST
LAT	.deg	:LATITUDE
LONG	.deg	:LONGITUDE
DLS	.deg/100ft	:DOGLEG SEVERITY

~ASCII DATA

0.00	0.00	136.09	0.00	0.00	0.00	0.00	40.4421381
-104.8333839	0.00						
25.00	0.00	136.09	25.00	0.00	0.00	0.00	40.4421381
-104.8333839	0.00						
125.00	0.00	136.09	125.00	0.00	0.00	0.00	40.4421381

ORR_STATE_23C-35-M_PWP__REV-A.0_.las

-104.8333839	0.00							
225.00	0.00	136.09	225.00	0.00	0.00	0.00	40.4421381	
-104.8333839	0.00							
325.00	2.00	136.09	324.98	-1.01	-1.26	1.21	40.4421346	
-104.8333795	2.00							
425.00	4.00	136.09	424.84	-4.05	-5.03	4.84	40.4421243	
-104.8333665	2.00							
525.00	6.00	136.09	524.45	-9.11	-11.31	10.88	40.4421070	
-104.8333448	2.00							
625.00	8.00	136.09	623.70	-16.19	-20.08	19.34	40.4420829	
-104.8333144	2.00							
725.00	10.00	136.09	722.47	-25.27	-31.35	30.19	40.4420520	
-104.8332754	2.00							
768.06	10.86	136.09	764.82	-29.80	-36.97	35.59	40.4420366	
-104.8332560	2.00							
825.00	10.86	136.09	820.73	-36.02	-44.70	43.03	40.4420154	
-104.8332293	0.00							
925.00	10.86	136.09	918.94	-46.96	-58.27	56.10	40.4419781	
-104.8331823	0.00							
1025.00	10.86	136.09	1017.15	-57.91	-71.85	69.17	40.4419408	
-104.8331354	0.00							
1125.00	10.86	136.09	1115.36	-68.85	-85.42	82.24	40.4419036	
-104.8330884	0.00							
1225.00	10.86	136.09	1213.57	-79.79	-99.00	95.31	40.4418663	
-104.8330415	0.00							
1325.00	10.86	136.09	1311.78	-90.73	-112.57	108.38	40.4418291	
-104.8329945	0.00							
1425.00	10.86	136.09	1409.99	-101.67	-126.14	121.45	40.4417918	
-104.8329476	0.00							
1525.00	10.86	136.09	1508.19	-112.61	-139.72	134.52	40.4417545	
-104.8329006	0.00							
1625.00	10.86	136.09	1606.40	-123.55	-153.29	147.59	40.4417173	
-104.8328537	0.00							
1725.00	10.86	136.09	1704.61	-134.49	-166.87	160.66	40.4416800	
-104.8328067	0.00							
1825.00	10.86	136.09	1802.82	-145.43	-180.44	173.73	40.4416428	
-104.8327598	0.00							
1925.00	10.86	136.09	1901.03	-156.37	-194.02	186.80	40.4416055	
-104.8327128	0.00							
2025.00	10.86	136.09	1999.24	-167.31	-207.59	199.86	40.4415682	
-104.8326659	0.00							
2125.00	10.86	136.09	2097.45	-178.25	-221.16	212.93	40.4415310	
-104.8326189	0.00							
2225.00	10.86	136.09	2195.65	-189.19	-234.74	226.00	40.4414937	
-104.8325720	0.00							
2325.00	10.86	136.09	2293.86	-200.13	-248.31	239.07	40.4414565	
-104.8325250	0.00							
2425.00	10.86	136.09	2392.07	-211.07	-261.89	252.14	40.4414192	
-104.8324781	0.00							
2525.00	10.86	136.09	2490.28	-222.01	-275.46	265.21	40.4413819	
-104.8324311	0.00							
2625.00	10.86	136.09	2588.49	-232.95	-289.04	278.28	40.4413447	
-104.8323841	0.00							
2725.00	10.86	136.09	2686.70	-243.89	-302.61	291.35	40.4413074	
-104.8323372	0.00							
2825.00	10.86	136.09	2784.91	-254.83	-316.18	304.42	40.4412702	
-104.8322902	0.00							
2925.00	10.86	136.09	2883.11	-265.77	-329.76	317.49	40.4412329	
-104.8322433	0.00							
3025.00	10.86	136.09	2981.32	-276.71	-343.33	330.56	40.4411956	
-104.8321963	0.00							
3125.00	10.86	136.09	3079.53	-287.65	-356.91	343.63	40.4411584	
-104.8321494	0.00							

ORR_STATE_23C-35-M_PWP__REV-A.0_.las

3225.00	10.86	136.09	3177.74	-298.59	-370.48	356.69	40.4411211
-104.8321024	0.00						
3325.00	10.86	136.09	3275.95	-309.53	-384.06	369.76	40.4410839
-104.8320555	0.00						
3425.00	10.86	136.09	3374.16	-320.47	-397.63	382.83	40.4410466
-104.8320085	0.00						
3525.00	10.86	136.09	3472.37	-331.41	-411.20	395.90	40.4410093
-104.8319616	0.00						
3625.00	10.86	136.09	3570.58	-342.35	-424.78	408.97	40.4409721
-104.8319146	0.00						
3725.00	10.86	136.09	3668.78	-353.29	-438.35	422.04	40.4409348
-104.8318677	0.00						
3825.00	10.86	136.09	3766.99	-364.23	-451.93	435.11	40.4408976
-104.8318207	0.00						
3925.00	10.86	136.09	3865.20	-375.17	-465.50	448.18	40.4408603
-104.8317738	0.00						
4025.00	10.86	136.09	3963.41	-386.11	-479.08	461.25	40.4408230
-104.8317268	0.00						
4125.00	10.86	136.09	4061.62	-397.05	-492.65	474.32	40.4407858
-104.8316799	0.00						
4225.00	10.86	136.09	4159.83	-407.99	-506.22	487.39	40.4407485
-104.8316329	0.00						
4325.00	10.86	136.09	4258.04	-418.93	-519.80	500.46	40.4407113
-104.8315860	0.00						
4425.00	10.86	136.09	4356.24	-429.87	-533.37	513.52	40.4406740
-104.8315390	0.00						
4525.00	10.86	136.09	4454.45	-440.82	-546.95	526.59	40.4406367
-104.8314921	0.00						
4625.00	10.86	136.09	4552.66	-451.76	-560.52	539.66	40.4405995
-104.8314451	0.00						
4725.00	10.86	136.09	4650.87	-462.70	-574.10	552.73	40.4405622
-104.8313982	0.00						
4825.00	10.86	136.09	4749.08	-473.64	-587.67	565.80	40.4405250
-104.8313512	0.00						
4925.00	10.86	136.09	4847.29	-484.58	-601.24	578.87	40.4404877
-104.8313043	0.00						
5025.00	10.86	136.09	4945.50	-495.52	-614.82	591.94	40.4404504
-104.8312573	0.00						
5125.00	10.86	136.09	5043.70	-506.46	-628.39	605.01	40.4404132
-104.8312104	0.00						
5225.00	10.86	136.09	5141.91	-517.40	-641.97	618.08	40.4403759
-104.8311634	0.00						
5325.00	10.86	136.09	5240.12	-528.34	-655.54	631.15	40.4403386
-104.8311165	0.00						
5425.00	10.86	136.09	5338.33	-539.28	-669.12	644.22	40.4403014
-104.8310695	0.00						
5525.00	10.86	136.09	5436.54	-550.22	-682.69	657.29	40.4402641
-104.8310226	0.00						
5625.00	10.86	136.09	5534.75	-561.16	-696.26	670.35	40.4402269
-104.8309756	0.00						
5725.00	10.86	136.09	5632.96	-572.10	-709.84	683.42	40.4401896
-104.8309287	0.00						
5825.00	10.86	136.09	5731.16	-583.04	-723.41	696.49	40.4401523
-104.8308817	0.00						
5925.00	10.86	136.09	5829.37	-593.98	-736.99	709.56	40.4401151
-104.8308348	0.00						
6025.00	10.86	136.09	5927.58	-604.92	-750.56	722.63	40.4400778
-104.8307878	0.00						
6125.00	10.86	136.09	6025.79	-615.86	-764.14	735.70	40.4400406
-104.8307409	0.00						
6225.00	10.86	136.09	6124.00	-626.80	-777.71	748.77	40.4400033
-104.8306939	0.00						
6325.00	10.86	136.09	6222.21	-637.74	-791.29	761.84	40.4399660

ORR_STATE_23C-35-M_PWP__REV-A.0_.las

-104.8306470	0.00							
6425.00	10.86	136.09	6320.42	-648.68	-804.86	774.91	40.4399288	
-104.8306000	0.00							
6494.26	10.86	136.09	6388.43	-656.26	-814.26	783.96	40.4399030	
-104.8305675	0.00							
6525.00	9.19	148.83	6418.71	-658.89	-818.45	787.24	40.4398915	
-104.8305557	9.00							
6625.00	8.99	208.36	6517.66	-657.30	-832.19	787.66	40.4398538	
-104.8305542	9.00							
6725.00	15.43	239.52	6615.44	-640.25	-845.84	772.45	40.4398163	
-104.8306088	9.00							
6825.00	23.59	251.18	6709.65	-608.18	-859.07	741.99	40.4397800	
-104.8307183	9.00							
6925.00	32.18	256.98	6797.98	-561.86	-871.55	697.01	40.4397457	
-104.8308799	9.00							
7025.00	40.93	260.51	6878.24	-502.44	-882.97	638.64	40.4397144	
-104.8310896	9.00							
7125.00	49.76	262.98	6948.45	-431.39	-893.06	568.30	40.4396867	
-104.8313423	9.00							
7225.00	58.63	264.87	7006.90	-350.44	-901.57	487.73	40.4396633	
-104.8316317	9.00							
7325.00	67.52	266.43	7052.13	-261.60	-908.28	398.92	40.4396449	
-104.8319508	9.00							
7425.00	76.43	267.80	7083.05	-167.05	-913.03	304.04	40.4396319	
-104.8322916	9.00							
7525.00	85.34	269.08	7098.88	-69.13	-915.70	205.44	40.4396246	
-104.8326458	9.00							
7578.26	90.09	269.74	7101.00	-16.42	-916.25	152.25	40.4396231	
-104.8328369	9.00							
7625.00	90.09	269.74	7100.93	29.85	-916.47	105.51	40.4396225	
-104.8330049	0.00							
7725.00	90.09	269.74	7100.78	128.84	-916.93	5.51	40.4396212	
-104.8333641	0.00							
7825.00	90.09	269.74	7100.62	227.82	-917.39	-94.49	40.4396199	
-104.8337233	0.00							
7925.00	90.09	269.74	7100.47	326.81	-917.85	-194.49	40.4396187	
-104.8340826	0.00							
8025.00	90.09	269.74	7100.32	425.80	-918.31	-294.49	40.4396174	
-104.8344418	0.00							
8125.00	90.09	269.74	7100.16	524.79	-918.77	-394.49	40.4396161	
-104.8348011	0.00							
8225.00	90.09	269.74	7100.01	623.78	-919.23	-494.49	40.4396149	
-104.8351603	0.00							
8325.00	90.09	269.74	7099.86	722.76	-919.69	-594.49	40.4396136	
-104.8355196	0.00							
8425.00	90.09	269.74	7099.71	821.75	-920.15	-694.48	40.4396123	
-104.8358788	0.00							
8525.00	90.09	269.74	7099.55	920.74	-920.61	-794.48	40.4396111	
-104.8362381	0.00							
8625.00	90.09	269.74	7099.40	1019.73	-921.07	-894.48	40.4396098	
-104.8365973	0.00							
8725.00	90.09	269.74	7099.25	1118.72	-921.53	-994.48	40.4396085	
-104.8369565	0.00							
8825.00	90.09	269.74	7099.10	1217.71	-921.99	-1094.48	40.4396072	
-104.8373158	0.00							
8925.00	90.09	269.74	7098.94	1316.69	-922.45	-1194.48	40.4396060	
-104.8376750	0.00							
9025.00	90.09	269.74	7098.79	1415.68	-922.91	-1294.48	40.4396047	
-104.8380343	0.00							
9125.00	90.09	269.74	7098.64	1514.67	-923.37	-1394.48	40.4396034	
-104.8383935	0.00							
9225.00	90.09	269.74	7098.48	1613.66	-923.83	-1494.47	40.4396021	
-104.8387528	0.00							

ORR_STATE_23C-35-M_PWP__REV-A.0_.las

9325.00	90.09	269.74	7098.33	1712.65	-924.29	-1594.47	40.4396008
-104.8391120	0.00						
9425.00	90.09	269.74	7098.18	1811.63	-924.76	-1694.47	40.4395996
-104.8394713	0.00						
9525.00	90.09	269.74	7098.03	1910.62	-925.22	-1794.47	40.4395983
-104.8398305	0.00						
9625.00	90.09	269.74	7097.87	2009.61	-925.68	-1894.47	40.4395970
-104.8401897	0.00						
9725.00	90.09	269.74	7097.72	2108.60	-926.14	-1994.47	40.4395957
-104.8405490	0.00						
9825.00	90.09	269.74	7097.57	2207.59	-926.60	-2094.47	40.4395944
-104.8409082	0.00						
9925.00	90.09	269.74	7097.41	2306.57	-927.06	-2194.47	40.4395931
-104.8412675	0.00						
10025.00	90.09	269.74	7097.26	2405.56	-927.52	-2294.47	40.4395918
-104.8416267	0.00						
10125.00	90.09	269.74	7097.11	2504.55	-927.98	-2394.46	40.4395905
-104.8419860	0.00						
10225.00	90.09	269.74	7096.96	2603.54	-928.44	-2494.46	40.4395893
-104.8423452	0.00						
10325.00	90.09	269.74	7096.80	2702.53	-928.90	-2594.46	40.4395880
-104.8427045	0.00						
10425.00	90.09	269.74	7096.65	2801.51	-929.36	-2694.46	40.4395867
-104.8430637	0.00						
10525.00	90.09	269.74	7096.50	2900.50	-929.82	-2794.46	40.4395854
-104.8434229	0.00						
10625.00	90.09	269.74	7096.34	2999.49	-930.28	-2894.46	40.4395841
-104.8437822	0.00						
10725.00	90.09	269.74	7096.19	3098.48	-930.74	-2994.46	40.4395828
-104.8441414	0.00						
10825.00	90.09	269.74	7096.04	3197.47	-931.20	-3094.46	40.4395815
-104.8445007	0.00						
10925.00	90.09	269.74	7095.89	3296.45	-931.66	-3194.45	40.4395802
-104.8448599	0.00						
11025.00	90.09	269.74	7095.73	3395.44	-932.12	-3294.45	40.4395789
-104.8452192	0.00						
11125.00	90.09	269.74	7095.58	3494.43	-932.58	-3394.45	40.4395776
-104.8455784	0.00						
11225.00	90.09	269.74	7095.43	3593.42	-933.04	-3494.45	40.4395763
-104.8459377	0.00						
11325.00	90.09	269.74	7095.28	3692.41	-933.50	-3594.45	40.4395750
-104.8462969	0.00						
11425.00	90.09	269.74	7095.12	3791.40	-933.97	-3694.45	40.4395737
-104.8466561	0.00						
11525.00	90.09	269.74	7094.97	3890.38	-934.43	-3794.45	40.4395724
-104.8470154	0.00						
11625.00	90.09	269.74	7094.82	3989.37	-934.89	-3894.45	40.4395711
-104.8473746	0.00						
11725.00	90.09	269.74	7094.66	4088.36	-935.35	-3994.45	40.4395698
-104.8477339	0.00						
11825.00	90.09	269.74	7094.51	4187.35	-935.81	-4094.44	40.4395684
-104.8480931	0.00						
11925.00	90.09	269.74	7094.36	4286.34	-936.27	-4194.44	40.4395671
-104.8484524	0.00						
12025.00	90.09	269.74	7094.21	4385.32	-936.73	-4294.44	40.4395658
-104.8488116	0.00						
12125.00	90.09	269.74	7094.05	4484.31	-937.19	-4394.44	40.4395645
-104.8491709	0.00						
12225.00	90.09	269.74	7093.90	4583.30	-937.65	-4494.44	40.4395632
-104.8495301	0.00						
12325.00	90.09	269.74	7093.75	4682.29	-938.11	-4594.44	40.4395619
-104.8498893	0.00						
12425.00	90.09	269.74	7093.59	4781.28	-938.57	-4694.44	40.4395606

ORR_STATE_23C-35-M_PWP__REV-A.0_.las

-104.8502486	0.00							
12525.00	90.09	269.74	7093.44	4880.26	-939.03	-4794.44	40.4395593	
-104.8506078	0.00							
12625.00	90.09	269.74	7093.29	4979.25	-939.49	-4894.43	40.4395579	
-104.8509671	0.00							
12725.00	90.09	269.74	7093.14	5078.24	-939.95	-4994.43	40.4395566	
-104.8513263	0.00							
12825.00	90.09	269.74	7092.98	5177.23	-940.41	-5094.43	40.4395553	
-104.8516856	0.00							
12925.00	90.09	269.74	7092.83	5276.22	-940.87	-5194.43	40.4395540	
-104.8520448	0.00							
13025.00	90.09	269.74	7092.68	5375.20	-941.33	-5294.43	40.4395526	
-104.8524040	0.00							
13125.00	90.09	269.74	7092.53	5474.19	-941.79	-5394.43	40.4395513	
-104.8527633	0.00							
13225.00	90.09	269.74	7092.37	5573.18	-942.25	-5494.43	40.4395500	
-104.8531225	0.00							
13325.00	90.09	269.74	7092.22	5672.17	-942.72	-5594.43	40.4395487	
-104.8534818	0.00							
13425.00	90.09	269.74	7092.07	5771.16	-943.18	-5694.43	40.4395473	
-104.8538410	0.00							
13525.00	90.09	269.74	7091.91	5870.14	-943.64	-5794.42	40.4395460	
-104.8542003	0.00							
13625.00	90.09	269.74	7091.76	5969.13	-944.10	-5894.42	40.4395447	
-104.8545595	0.00							
13725.00	90.09	269.74	7091.61	6068.12	-944.56	-5994.42	40.4395434	
-104.8549188	0.00							
13825.00	90.09	269.74	7091.46	6167.11	-945.02	-6094.42	40.4395420	
-104.8552780	0.00							
13925.00	90.09	269.74	7091.30	6266.10	-945.48	-6194.42	40.4395407	
-104.8556372	0.00							
14025.00	90.09	269.74	7091.15	6365.09	-945.94	-6294.42	40.4395394	
-104.8559965	0.00							
14123.10	90.09	269.74	7091.00	6462.19	-946.39	-6392.51	40.4395381	
-104.8563489	0.00							



Planned Wellpath Report

ORR STATE 23C-35-M PWP (REV-A.0)

Page 1 of 9



REFERENCE WELLPATH IDENTIFICATION			
Operator	SYNERGY RESOURCES CORPORATION	Slot	SLOT#19 ORR STATE 23C-35-M (2149'FSL & 234'FEL, SEC.36)
Area	COLORADO	Well	ORR STATE 23C-35-M
Field	WELD COUNTY (NAD83,TRUE NORTH)	Wellbore	ORR STATE 23C-35-M PWB
Facility	SEC.36-T06N-R67W		

REPORT SETUP INFORMATION			
Projection System	NAD83 / Lambert Colorado SP, Northern Zone (501), US feet	Software System	WellArchitect® 5.0
North Reference	True	User	Wagnjam
Scale	0.999962	Report Generated	10/14/2016 at 1:42:28 PM
Convergence at slot	0.44° East	Database/Source file	WA_DEN_Denver_Defn/ORR_STATE_23C-35-M_PWP_REV-A.0_.xml

WELLPATH LOCATION						
	Local coordinates		Grid coordinates		Geographic coordinates	
	North[ft]	East[ft]	Easting[US ft]	Northing[US ft]	Latitude	Longitude
Slot Location	-122.04	299.22	3185542.34	1404608.64	40°26'31.697"N	104°50'00.182"W
Facility Reference Pt			3185242.22	1404728.43	40°26'32.903"N	104°50'04.052"W
Field Reference Pt			3171284.48	1426358.81	40°30'07.643"N	104°53'02.634"W

WELLPATH DATUM			
Calculation method	Minimum curvature	PRECISION 562 (25'KB) (RKB) to Facility Vertical Datum	4749.00ft
Horizontal Reference Pt	Slot	PRECISION 562 (25'KB) (RKB) to Mean Sea Level	4749.00ft
Vertical Reference Pt	PRECISION 562 (25'KB) (RKB)	PRECISION 562 (25'KB) (RKB) to Mud Line at Slot (SLOT#19 ORR STATE 23C-35-M (2149'FSL & 234'FEL, SEC.36))	4749.00ft
MD Reference Pt	PRECISION 562 (25'KB) (RKB)	Section Origin	N 0.00, E 0.00 ft
Field Vertical Reference	Mean Sea Level	Section Azimuth	261.58°



Planned Wellpath Report

ORR STATE 23C-35-M PWP (REV-A.0)

Page 2 of 9



REFERENCE WELLPATH IDENTIFICATION			
Operator	SYNERGY RESOURCES CORPORATION	Slot	SLOT#19 ORR STATE 23C-35-M (2149'FSL & 234'FEL, SEC.36)
Area	COLORADO	Well	ORR STATE 23C-35-M
Field	WELD COUNTY (NAD83,TRUE NORTH)	Wellbore	ORR STATE 23C-35-M PWB
Facility	SEC.36-T06N-R67W		

WELLPATH DATA (151 stations) † = interpolated/extrapolated station								
MD [ft]	Inclination [°]	Azimuth [°]	TVD [ft]	Vert Sect [ft]	North [ft]	East [ft]	DLS [°/100ft]	Comments
0.00†	0.000	136.086	0.00	0.00	0.00	0.00	0.00	
25.00	0.000	136.086	25.00	0.00	0.00	0.00	0.00	Tie On
125.00†	0.000	136.086	125.00	0.00	0.00	0.00	0.00	
225.00	0.000	136.086	225.00	0.00	0.00	0.00	0.00	End of Tangent
325.00†	2.000	136.086	324.98	-1.01	-1.26	1.21	2.00	
425.00†	4.000	136.086	424.84	-4.05	-5.03	4.84	2.00	
525.00†	6.000	136.086	524.45	-9.11	-11.31	10.88	2.00	
625.00†	8.000	136.086	623.70	-16.19	-20.08	19.34	2.00	
725.00†	10.000	136.086	722.47	-25.27	-31.35	30.19	2.00	
768.06	10.861	136.086	764.82	-29.80	-36.97	35.59	2.00	End of Build
825.00†	10.861	136.086	820.73	-36.02	-44.70	43.03	0.00	
925.00†	10.861	136.086	918.94	-46.96	-58.27	56.10	0.00	
1025.00†	10.861	136.086	1017.15	-57.91	-71.85	69.17	0.00	
1125.00†	10.861	136.086	1115.36	-68.85	-85.42	82.24	0.00	
1225.00†	10.861	136.086	1213.57	-79.79	-99.00	95.31	0.00	
1325.00†	10.861	136.086	1311.78	-90.73	-112.57	108.38	0.00	
1425.00†	10.861	136.086	1409.99	-101.67	-126.14	121.45	0.00	
1525.00†	10.861	136.086	1508.19	-112.61	-139.72	134.52	0.00	
1625.00†	10.861	136.086	1606.40	-123.55	-153.29	147.59	0.00	
1725.00†	10.861	136.086	1704.61	-134.49	-166.87	160.66	0.00	
1825.00†	10.861	136.086	1802.82	-145.43	-180.44	173.73	0.00	
1925.00†	10.861	136.086	1901.03	-156.37	-194.02	186.80	0.00	
2025.00†	10.861	136.086	1999.24	-167.31	-207.59	199.86	0.00	
2125.00†	10.861	136.086	2097.45	-178.25	-221.16	212.93	0.00	
2225.00†	10.861	136.086	2195.65	-189.19	-234.74	226.00	0.00	
2325.00†	10.861	136.086	2293.86	-200.13	-248.31	239.07	0.00	
2425.00†	10.861	136.086	2392.07	-211.07	-261.89	252.14	0.00	
2525.00†	10.861	136.086	2490.28	-222.01	-275.46	265.21	0.00	
2625.00†	10.861	136.086	2588.49	-232.95	-289.04	278.28	0.00	
2725.00†	10.861	136.086	2686.70	-243.89	-302.61	291.35	0.00	



Planned Wellpath Report

ORR STATE 23C-35-M PWP (REV-A.0)

Page 3 of 9



REFERENCE WELLPATH IDENTIFICATION			
Operator	SYNERGY RESOURCES CORPORATION	Slot	SLOT#19 ORR STATE 23C-35-M (2149'FSL & 234'FEL, SEC.36)
Area	COLORADO	Well	ORR STATE 23C-35-M
Field	WELD COUNTY (NAD83,TRUE NORTH)	Wellbore	ORR STATE 23C-35-M PWB
Facility	SEC.36-T06N-R67W		

WELLPATH DATA (151 stations) † = interpolated/extrapolated station								
MD [ft]	Inclination [°]	Azimuth [°]	TVD [ft]	Vert Sect [ft]	North [ft]	East [ft]	DLS [°/100ft]	Comments
2825.00†	10.861	136.086	2784.91	-254.83	-316.18	304.42	0.00	
2925.00†	10.861	136.086	2883.11	-265.77	-329.76	317.49	0.00	
3025.00†	10.861	136.086	2981.32	-276.71	-343.33	330.56	0.00	
3125.00†	10.861	136.086	3079.53	-287.65	-356.91	343.63	0.00	
3225.00†	10.861	136.086	3177.74	-298.59	-370.48	356.69	0.00	
3325.00†	10.861	136.086	3275.95	-309.53	-384.06	369.76	0.00	
3425.00†	10.861	136.086	3374.16	-320.47	-397.63	382.83	0.00	
3525.00†	10.861	136.086	3472.37	-331.41	-411.20	395.90	0.00	
3625.00†	10.861	136.086	3570.58	-342.35	-424.78	408.97	0.00	
3725.00†	10.861	136.086	3668.78	-353.29	-438.35	422.04	0.00	
3825.00†	10.861	136.086	3766.99	-364.23	-451.93	435.11	0.00	
3925.00†	10.861	136.086	3865.20	-375.17	-465.50	448.18	0.00	
4025.00†	10.861	136.086	3963.41	-386.11	-479.08	461.25	0.00	
4125.00†	10.861	136.086	4061.62	-397.05	-492.65	474.32	0.00	
4225.00†	10.861	136.086	4159.83	-407.99	-506.22	487.39	0.00	
4325.00†	10.861	136.086	4258.04	-418.93	-519.80	500.46	0.00	
4425.00†	10.861	136.086	4356.24	-429.87	-533.37	513.52	0.00	
4525.00†	10.861	136.086	4454.45	-440.82	-546.95	526.59	0.00	
4625.00†	10.861	136.086	4552.66	-451.76	-560.52	539.66	0.00	
4725.00†	10.861	136.086	4650.87	-462.70	-574.10	552.73	0.00	
4825.00†	10.861	136.086	4749.08	-473.64	-587.67	565.80	0.00	
4925.00†	10.861	136.086	4847.29	-484.58	-601.24	578.87	0.00	
5025.00†	10.861	136.086	4945.50	-495.52	-614.82	591.94	0.00	
5125.00†	10.861	136.086	5043.70	-506.46	-628.39	605.01	0.00	
5225.00†	10.861	136.086	5141.91	-517.40	-641.97	618.08	0.00	
5325.00†	10.861	136.086	5240.12	-528.34	-655.54	631.15	0.00	
5425.00†	10.861	136.086	5338.33	-539.28	-669.12	644.22	0.00	
5525.00†	10.861	136.086	5436.54	-550.22	-682.69	657.29	0.00	
5625.00†	10.861	136.086	5534.75	-561.16	-696.26	670.35	0.00	
5725.00†	10.861	136.086	5632.96	-572.10	-709.84	683.42	0.00	



Planned Wellpath Report

ORR STATE 23C-35-M PWP (REV-A.0)

Page 4 of 9



REFERENCE WELLPATH IDENTIFICATION			
Operator	SYNERGY RESOURCES CORPORATION	Slot	SLOT#19 ORR STATE 23C-35-M (2149'FSL & 234'FEL, SEC.36)
Area	COLORADO	Well	ORR STATE 23C-35-M
Field	WELD COUNTY (NAD83, TRUE NORTH)	Wellbore	ORR STATE 23C-35-M PWB
Facility	SEC.36-T06N-R67W		

WELLPATH DATA (151 stations) † = interpolated/extrapolated station								
MD [ft]	Inclination [°]	Azimuth [°]	TVD [ft]	Vert Sect [ft]	North [ft]	East [ft]	DLS [°/100ft]	Comments
5825.00†	10.861	136.086	5731.16	-583.04	-723.41	696.49	0.00	
5925.00†	10.861	136.086	5829.37	-593.98	-736.99	709.56	0.00	
6025.00†	10.861	136.086	5927.58	-604.92	-750.56	722.63	0.00	
6125.00†	10.861	136.086	6025.79	-615.86	-764.14	735.70	0.00	
6225.00†	10.861	136.086	6124.00	-626.80	-777.71	748.77	0.00	
6325.00†	10.861	136.086	6222.21	-637.74	-791.29	761.84	0.00	
6425.00†	10.861	136.086	6320.42	-648.68	-804.86	774.91	0.00	
6494.26	10.861	136.086	6388.43	-656.26	-814.26	783.96	0.00	End of Tangent
6525.00†	9.192	148.828	6418.71	-658.89	-818.45	787.24	9.00	
6625.00†	8.990	208.361	6517.66	-657.30	-832.19	787.66	9.00	
6725.00†	15.431	239.522	6615.44	-640.25	-845.84	772.45	9.00	
6825.00†	23.588	251.181	6709.65	-608.18	-859.07	741.99	9.00	
6859.61†	26.533	253.577	6741.00	-593.71	-863.49	728.02	9.00	SHARON SPRINGS
6902.81†	30.254	255.952	6779.00	-573.31	-868.86	708.20	9.00	NIO-A
6925.00†	32.180	256.975	6797.98	-561.86	-871.55	697.01	9.00	
7025.00†	40.933	260.510	6878.24	-502.44	-882.97	638.64	9.00	
7057.16†	43.766	261.388	6902.00	-480.78	-886.38	617.25	9.00	NIO-B
7125.00†	49.762	262.976	6948.45	-431.39	-893.06	568.30	9.00	
7167.80†	53.554	263.838	6975.00	-397.84	-896.91	534.96	9.00	NIO-C
7225.00†	58.631	264.868	7006.90	-350.44	-901.57	487.73	9.00	
7325.00†	67.523	266.430	7052.13	-261.60	-908.28	398.92	9.00	
7376.83†	72.137	267.159	7070.00	-213.17	-910.99	350.36	9.00	FORT HAYS
7425.00†	76.428	267.803	7083.05	-167.05	-913.03	304.04	9.00	
7525.00†	85.340	269.075	7098.88	-69.13	-915.70	205.44	9.00	
7578.26	90.088	269.736	7101.00†	-16.42	-916.25	152.25	9.00	End of 3D Arc
7625.00†	90.088	269.736	7100.93	29.85	-916.47	105.51	0.00	
7725.00†	90.088	269.736	7100.78	128.84	-916.93	5.51	0.00	
7825.00†	90.088	269.736	7100.62	227.82	-917.39	-94.49	0.00	
7925.00†	90.088	269.736	7100.47	326.81	-917.85	-194.49	0.00	
8025.00†	90.088	269.736	7100.32	425.80	-918.31	-294.49	0.00	



Planned Wellpath Report

ORR STATE 23C-35-M PWP (REV-A.0)

Page 5 of 9



REFERENCE WELLPATH IDENTIFICATION			
Operator	SYNERGY RESOURCES CORPORATION	Slot	SLOT#19 ORR STATE 23C-35-M (2149'FSL & 234'FEL, SEC.36)
Area	COLORADO	Well	ORR STATE 23C-35-M
Field	WELD COUNTY (NAD83,TRUE NORTH)	Wellbore	ORR STATE 23C-35-M PWB
Facility	SEC.36-T06N-R67W		

WELLPATH DATA (151 stations) † = interpolated/extrapolated station									
MD [ft]	Inclination [°]	Azimuth [°]	TVD [ft]	Vert Sect [ft]	North [ft]	East [ft]	DLS [°/100ft]	Comments	
8125.00†	90.088	269.736	7100.16	524.79	-918.77	-394.49	0.00		
8225.00†	90.088	269.736	7100.01	623.78	-919.23	-494.49	0.00		
8325.00†	90.088	269.736	7099.86	722.76	-919.69	-594.49	0.00		
8425.00†	90.088	269.736	7099.71	821.75	-920.15	-694.48	0.00		
8525.00†	90.088	269.736	7099.55	920.74	-920.61	-794.48	0.00		
8625.00†	90.088	269.736	7099.40	1019.73	-921.07	-894.48	0.00		
8725.00†	90.088	269.736	7099.25	1118.72	-921.53	-994.48	0.00		
8825.00†	90.088	269.736	7099.10	1217.71	-921.99	-1094.48	0.00		
8925.00†	90.088	269.736	7098.94	1316.69	-922.45	-1194.48	0.00		
9025.00†	90.088	269.736	7098.79	1415.68	-922.91	-1294.48	0.00		
9125.00†	90.088	269.736	7098.64	1514.67	-923.37	-1394.48	0.00		
9225.00†	90.088	269.736	7098.48	1613.66	-923.83	-1494.47	0.00		
9325.00†	90.088	269.736	7098.33	1712.65	-924.29	-1594.47	0.00		
9425.00†	90.088	269.736	7098.18	1811.63	-924.76	-1694.47	0.00		
9525.00†	90.088	269.736	7098.03	1910.62	-925.22	-1794.47	0.00		
9625.00†	90.088	269.736	7097.87	2009.61	-925.68	-1894.47	0.00		
9725.00†	90.088	269.736	7097.72	2108.60	-926.14	-1994.47	0.00		
9825.00†	90.088	269.736	7097.57	2207.59	-926.60	-2094.47	0.00		
9925.00†	90.088	269.736	7097.41	2306.57	-927.06	-2194.47	0.00		
10025.00†	90.088	269.736	7097.26	2405.56	-927.52	-2294.47	0.00		
10125.00†	90.088	269.736	7097.11	2504.55	-927.98	-2394.46	0.00		
10225.00†	90.088	269.736	7096.96	2603.54	-928.44	-2494.46	0.00		
10325.00†	90.088	269.736	7096.80	2702.53	-928.90	-2594.46	0.00		
10425.00†	90.088	269.736	7096.65	2801.51	-929.36	-2694.46	0.00		
10525.00†	90.088	269.736	7096.50	2900.50	-929.82	-2794.46	0.00		
10625.00†	90.088	269.736	7096.34	2999.49	-930.28	-2894.46	0.00		
10725.00†	90.088	269.736	7096.19	3098.48	-930.74	-2994.46	0.00		
10825.00†	90.088	269.736	7096.04	3197.47	-931.20	-3094.46	0.00		
10925.00†	90.088	269.736	7095.89	3296.45	-931.66	-3194.45	0.00		
11025.00†	90.088	269.736	7095.73	3395.44	-932.12	-3294.45	0.00		



Planned Wellpath Report

ORR STATE 23C-35-M PWP (REV-A.0)

Page 6 of 9



REFERENCE WELLPATH IDENTIFICATION			
Operator	SYNERGY RESOURCES CORPORATION	Slot	SLOT#19 ORR STATE 23C-35-M (2149'FSL & 234'FEL, SEC.36)
Area	COLORADO	Well	ORR STATE 23C-35-M
Field	WELD COUNTY (NAD83,TRUE NORTH)	Wellbore	ORR STATE 23C-35-M PWB
Facility	SEC.36-T06N-R67W		

WELLPATH DATA (151 stations) † = interpolated/extrapolated station									
MD [ft]	Inclination [°]	Azimuth [°]	TVD [ft]	Vert Sect [ft]	North [ft]	East [ft]	DLS [°/100ft]	Comments	
11125.00†	90.088	269.736	7095.58	3494.43	-932.58	-3394.45	0.00		
11225.00†	90.088	269.736	7095.43	3593.42	-933.04	-3494.45	0.00		
11325.00†	90.088	269.736	7095.28	3692.41	-933.50	-3594.45	0.00		
11425.00†	90.088	269.736	7095.12	3791.40	-933.97	-3694.45	0.00		
11525.00†	90.088	269.736	7094.97	3890.38	-934.43	-3794.45	0.00		
11625.00†	90.088	269.736	7094.82	3989.37	-934.89	-3894.45	0.00		
11725.00†	90.088	269.736	7094.66	4088.36	-935.35	-3994.45	0.00		
11825.00†	90.088	269.736	7094.51	4187.35	-935.81	-4094.44	0.00		
11925.00†	90.088	269.736	7094.36	4286.34	-936.27	-4194.44	0.00		
12025.00†	90.088	269.736	7094.21	4385.32	-936.73	-4294.44	0.00		
12125.00†	90.088	269.736	7094.05	4484.31	-937.19	-4394.44	0.00		
12225.00†	90.088	269.736	7093.90	4583.30	-937.65	-4494.44	0.00		
12325.00†	90.088	269.736	7093.75	4682.29	-938.11	-4594.44	0.00		
12425.00†	90.088	269.736	7093.59	4781.28	-938.57	-4694.44	0.00		
12525.00†	90.088	269.736	7093.44	4880.26	-939.03	-4794.44	0.00		
12625.00†	90.088	269.736	7093.29	4979.25	-939.49	-4894.43	0.00		
12725.00†	90.088	269.736	7093.14	5078.24	-939.95	-4994.43	0.00		
12825.00†	90.088	269.736	7092.98	5177.23	-940.41	-5094.43	0.00		
12925.00†	90.088	269.736	7092.83	5276.22	-940.87	-5194.43	0.00		
13025.00†	90.088	269.736	7092.68	5375.20	-941.33	-5294.43	0.00		
13125.00†	90.088	269.736	7092.53	5474.19	-941.79	-5394.43	0.00		
13225.00†	90.088	269.736	7092.37	5573.18	-942.25	-5494.43	0.00		
13325.00†	90.088	269.736	7092.22	5672.17	-942.72	-5594.43	0.00		
13425.00†	90.088	269.736	7092.07	5771.16	-943.18	-5694.43	0.00		
13525.00†	90.088	269.736	7091.91	5870.14	-943.64	-5794.42	0.00		
13625.00†	90.088	269.736	7091.76	5969.13	-944.10	-5894.42	0.00		
13725.00†	90.088	269.736	7091.61	6068.12	-944.56	-5994.42	0.00		
13825.00†	90.088	269.736	7091.46	6167.11	-945.02	-6094.42	0.00		
13925.00†	90.088	269.736	7091.30	6266.10	-945.48	-6194.42	0.00		
14025.00†	90.088	269.736	7091.15	6365.09	-945.94	-6294.42	0.00		



Planned Wellpath Report

ORR STATE 23C-35-M PWP (REV-A.0)

Page 7 of 9



REFERENCE WELLPATH IDENTIFICATION			
Operator	SYNERGY RESOURCES CORPORATION	Slot	SLOT#19 ORR STATE 23C-35-M (2149'FSL & 234'FEL, SEC.36)
Area	COLORADO	Well	ORR STATE 23C-35-M
Field	WELD COUNTY (NAD83,TRUE NORTH)	Wellbore	ORR STATE 23C-35-M PWB
Facility	SEC.36-T06N-R67W		

WELLPATH DATA (151 stations)								
MD [ft]	Inclination [°]	Azimuth [°]	TVD [ft]	Vert Sect [ft]	North [ft]	East [ft]	DLS [°/100ft]	Comments
14123.10	90.088	269.736	7091.00 ²	6462.19	-946.39	-6392.51	0.00	End of Tangent

HOLE & CASING SECTIONS									
- Ref Wellbore: ORR STATE 23C-35-M PWB				Ref Wellpath: ORR STATE 23C-35-M PWP (REV-A.0)					
String/Diameter	Start MD [ft]	End MD [ft]	Interval [ft]	Start TVD [ft]	End TVD [ft]	Start N/S [ft]	Start E/W [ft]	End N/S [ft]	End E/W [ft]
13.5in Open Hole	25.00	1800.00	1775.00	25.00	1778.27	0.00	0.00	-177.05	170.46
8.5in Open Hole	1800.00	14200.00	12400.00	1778.27	N/A	-177.05	170.46	N/A	N/A



Planned Wellpath Report

ORR STATE 23C-35-M PWP (REV-A.0)

Page 8 of 9



REFERENCE WELLPATH IDENTIFICATION			
Operator	SYNERGY RESOURCES CORPORATION	Slot	SLOT#19 ORR STATE 23C-35-M (2149'FSL & 234'FEL, SEC.36)
Area	COLORADO	Well	ORR STATE 23C-35-M
Field	WELD COUNTY (NAD83,TRUE NORTH)	Wellbore	ORR STATE 23C-35-M PWB
Facility	SEC.36-T06N-R67W		

TARGETS									
Name	MD [ft]	TVD [ft]	North [ft]	East [ft]	Grid East [US ft]	Grid North [US ft]	Latitude	Longitude	Shape
SEC.31-T06N-R66W		5.00	122.05	-299.22	3185242.22	1404728.43	40°26'32.903"N	104°50'04.052"W	polygon
SEC.31-T06N-R67W		5.00	122.05	-299.22	3185242.22	1404728.43	40°26'32.903"N	104°50'04.052"W	point
SEC.32-T06N-R66W		5.00	122.05	-299.22	3185242.22	1404728.43	40°26'32.903"N	104°50'04.052"W	polygon
SEC.32-T06N-R67W		5.00	122.05	-299.22	3185242.22	1404728.43	40°26'32.903"N	104°50'04.052"W	point
SEC.35-T06N-R67W		5.00	122.05	-299.22	3185242.22	1404728.43	40°26'32.903"N	104°50'04.052"W	polygon
SEC.36-T06N-R67W		5.00	122.05	-299.22	3185242.22	1404728.43	40°26'32.903"N	104°50'04.052"W	polygon
2) ORR STATE 23C-35-M BHL ON PLAT REV-1 (858'FSL & 1674'FEL, SEC.35)	14123.10	7091.00	-946.39	-6392.51	3179157.38	1403614.26	40°26'22.337"N	104°51'22.856"W	circle
1) ORR STATE 23C-35-M ENTRY POINT (1242'FSL & 75'FEL, SEC.36)	7578.26	7101.00	-916.25	152.25	3185701.47	1403693.59	40°26'22.643"N	104°49'58.213"W	circle
SEC.31/21-T06N-R67W 460' SETBACK		7117.00	122.05	-299.22	3185242.22	1404728.43	40°26'32.903"N	104°50'04.052"W	point

SURVEY PROGRAM -				
Ref Wellbore: ORR STATE 23C-35-M PWB		Ref Wellpath: ORR STATE 23C-35-M PWP (REV-A.0)		
Start MD [ft]	End MD [ft]	Positional Uncertainty Model	Log Name/Comment	Wellbore
25.00	14147.67	BHI NaviTrak (Standard)		ORR STATE 23C-35-M PWB



Planned Wellpath Report

ORR STATE 23C-35-M PWP (REV-A.0)

Page 9 of 9



REFERENCE WELLPATH IDENTIFICATION			
Operator	SYNERGY RESOURCES CORPORATION	Slot	SLOT#19 ORR STATE 23C-35-M (2149'FSL & 234'FEL, SEC.36)
Area	COLORADO	Well	ORR STATE 23C-35-M
Field	WELD COUNTY (NAD83,TRUE NORTH)	Wellbore	ORR STATE 23C-35-M PWB
Facility	SEC.36-T06N-R67W		

WELLPATH COMMENTS				
MD [ft]	Inclination [°]	Azimuth [°]	TVD [ft]	Comment
6859.61	26.533	253.577	6741.00	SHARON SPRINGS
6902.81	30.254	255.952	6779.00	NIO-A
7057.16	43.766	261.388	6902.00	NIO-B
7167.80	53.554	263.838	6975.00	NIO-C
7376.83	72.137	267.159	7070.00	FORT HAYS