

SYNERGY RESOURCES CORPORATION

Location: COLORADO Slot: SLOT#20 ORR STATE 15N-35B-M (2129FSL & 234FEL, SEC.36)
Field: WELD COUNTY (NAD83,TRUE NORTH) Well: ORR STATE 15N-35B-M
Facility: SEC.36-T06N-R67W Wellbore: ORR STATE 15N-35B-M PWB

Plot reference wellpath is ORR STATE 15N-35B-M PWP (REV-A.0)	Grid System: NAD83 / Lambert Colorado SP, Northern Zone (501), US feet
True vertical depths are referenced to PRECISION 562 (25KB) (RKB)	" = Wellpath was transformed from a different geodetic datum
Measured depths are referenced to PRECISION 562 (25KB) (RKB)	North Reference: True north
PRECISION 562 (25KB) (RKB) to Mean Sea Level: 4749 feet	Scale: True distance
Mean Sea Level to Mud line (At Slot: SLOT#20 ORR STATE 15N-35B-M (2129FSL & 234FEL, SEC.36)): 0 feet	Depths are in feet
Coordinates are in feet referenced to Slot	Created by: wagnjam on 2016-10-13
	Database: WA_DEN_Denver_DeIn

Location Information

Facility Name			Grid East (US ft)	Grid North (US ft)	Latitude	Longitude
SEC.36-T06N-R67W			3185242.222	1404728.428	40°26'32.903"N	104°50'04.052"W
Slot	Local N (ft)	Local E (ft)	Grid East (US ft)	Grid North (US ft)	Latitude	Longitude
SLOT#20 ORR STATE 15N-35B-M (2129FSL & 234FEL, SEC.36)	-142.08	299.22	3185542.493	1404588.603	40°26'31.499"N	104°50'03.182"W
PRECISION 562 (25KB) (RKB) to Mud line (At Slot: SLOT#20 ORR STATE 15N-35B-M (2129FSL & 234FEL, SEC.36))					4749ft	
Mean Sea Level to Mud line (At Slot: SLOT#20 ORR STATE 15N-35B-M (2129FSL & 234FEL, SEC.36))					0ft	
PRECISION 562 (25KB) (RKB) to Mean Sea Level					4749ft	

Tie-On Position

MD (ft)	Inc (°)	Az (°)	TVD (ft)	Local N (ft)	Local E (ft)	Grid East (US ft)	Grid North (US ft)	Latitude	Longitude
25.00	0.000	144.111	25.00	0.00	0.00	3185542.49	1404588.60	40°26'31.499"N	104°50'00.182"W

Wellpath Comments

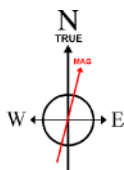
MD (ft)	X (ft)	Y (ft)	TVD (ft)	Inclination (°)	Azimuth (°)	VS (ft)	Comment
6965.65	617.04	-1182.30	6756.00	44.425	259.918	-412.34	SHARON SPRINGS
7021.22	577.03	-1188.75	6794.00	49.257	261.687	-371.82	NIO-A

Well Profile Data

Design Comment	MD (ft)	Inc (°)	Az (°)	TVD (ft)	Local N (ft)	Local E (ft)	DLS (°/100ft)	VS (ft)
Tie On	25.00	0.000	144.111	25.00	0.00	0.00	0.00	0.00
End of Tangent	300.00	0.000	144.111	300.00	0.00	0.00	0.00	0.00
End of Build	973.54	13.471	144.111	967.35	-63.85	46.20	2.00	-34.97
End of Tangent	6394.26	13.471	144.111	6238.94	-1086.88	786.45	0.00	-595.23
End of 3D Arc	7487.40	90.308	271.224	6952.00	-1210.27	150.01	9.00	52.86
End of Tangent	14005.12	90.308	271.224	6917.00	-1071.01	-6366.14	0.00	6455.60

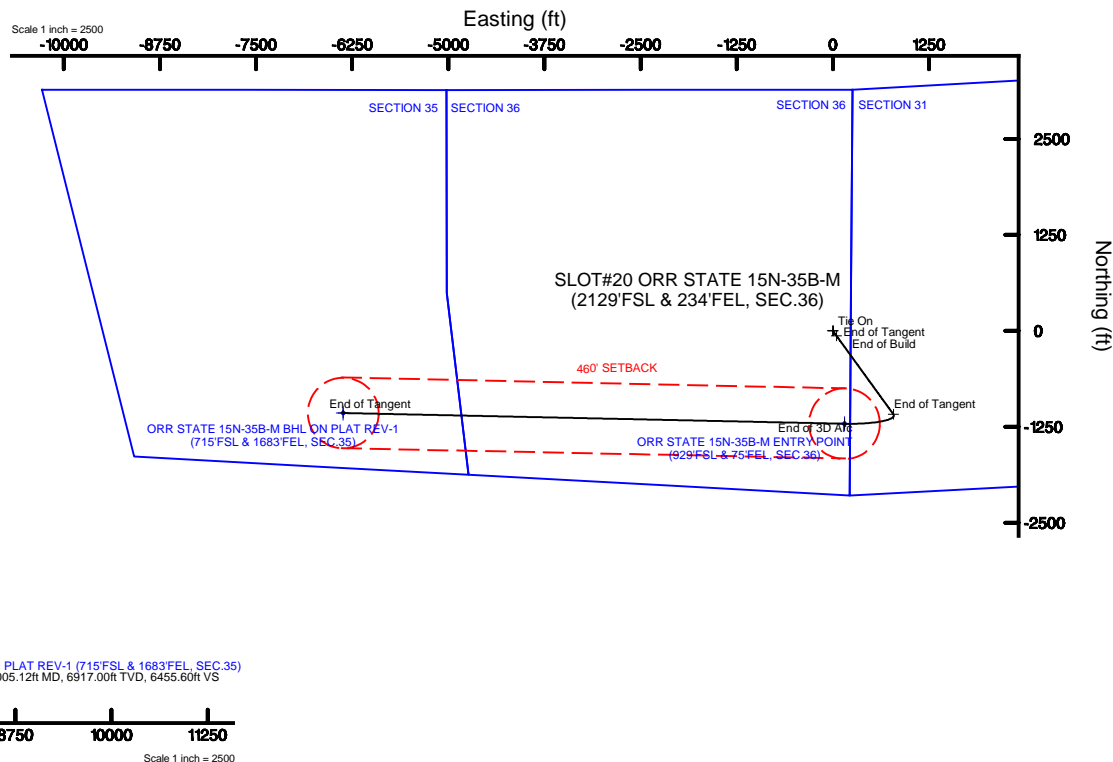
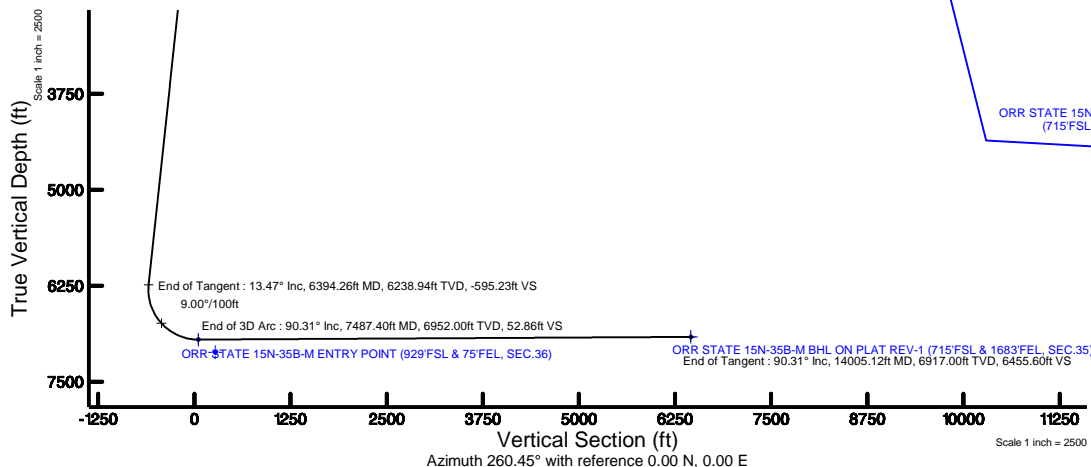
Targets

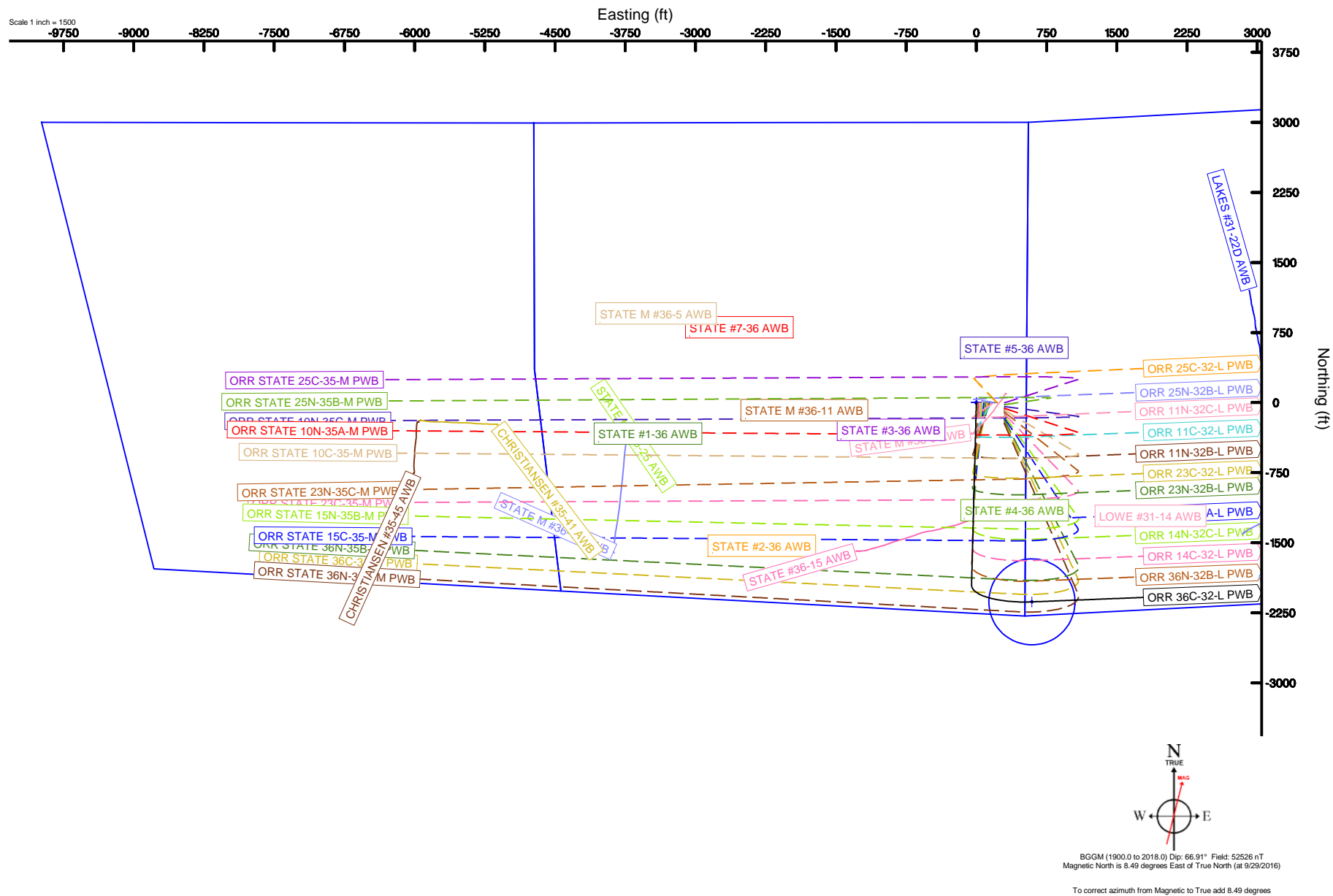
Name	MD (ft)	TVD (ft)	Local N (ft)	Local E (ft)	Grid East (US ft)	Grid North (US ft)	Latitude	Longitude
SEC.31-T06N-R66W	5.00	142.08	-299.22	3185242.22	1404728.43	40°26'32.903"N	104°50'04.052"W	
SEC.31-T06N-R67W	5.00	142.08	-299.22	3185242.22	1404728.43	40°26'32.903"N	104°50'04.052"W	
SEC.32-T06N-R66W	5.00	142.08	-299.22	3185242.22	1404728.43	40°26'32.903"N	104°50'04.052"W	
SEC.32-T06N-R67W	5.00	142.08	-299.22	3185242.22	1404728.43	40°26'32.903"N	104°50'04.052"W	
SEC.35-T06N-R67W	5.00	142.08	-299.22	3185242.22	1404728.43	40°26'32.903"N	104°50'04.052"W	
SEC.36-T06N-R67W	5.00	142.08	-299.22	3185242.22	1404728.43	40°26'32.903"N	104°50'04.052"W	
ORR STATE 15N-35B-M BHL ON PLAT REV-1 (715FSL & 1683FEL, SEC.35)	14005.12	6917.00	-1071.01	-6366.14	3179184.84	1403469.81	40°26'20.908"N	104°51'22.514"W
ORR STATE 15N-35B-M ENTRY POINT (929FSL & 75FEL, SEC.36)	7487.40	6952.00	-1210.27	150.01	3185701.59	1403379.54	40°26'19.540"N	104°49'58.242"W
SEC.3121-T06N-R67W 460' SETBACK	7117.00	142.08	-299.22	3185242.22	1404728.43	40°26'32.903"N	104°50'04.052"W	



BGGM (1900.0 to 2018.0) Dip: 66.91° Field: 52526 nT
Magnetic North is 8.49 degrees East of True North (at 9/29/2016)

To correct azimuth from Magnetic to True add 8.49 degrees





ORR_STATE_15N-35B-M_PWP__REV-A.0_.1as

~VERSION INFORMATION

VERS. 2.0 : CWLS LOG ASCII STANDARD-VERSION 2.0
 WRAP. NO : ASCII DATA SECTION CONTAINS ONE ROW PER WELLPATH STATION

~WELL INFORMATION

#MNEM	.UNITS	DATA	:DESCRIPTION
#-----	.-----	----	:-----
STRT	.ft	0.00	:START MD
STOP	.ft	14005.12	:STOP MD
STEP	.ft	0.0	:STEP (non-uniform increment)
NULL	.	-999.99	:NULL
COMP	.	SYNERGY RESOURCES CORPORATION	:OPERATOR
WELL	.	ORR STATE 15N-35B-M	:WELL
FLD	.	WELD COUNTY (NAD83,TRUE NORTH)	:FIELD
LOC	.	COLORADO	:AREA (aka: Location)
CNTY	.	N/A	:COUNTY
STAT	.	N/A	:STATE
CTRY	.	N/A	:COUNTRY
SRVC	.	Baker Hughes	:CONTRACTOR
DATE	.	09/29/2016	:LOG REV DATE
API	.		:API NUMBER

~OTHER INFORMATION

#Software: WellArchitect(R) Version 5.0

#MNEM	.UNITS	DATA	:DESCRIPTION
#-----	.-----	----	:-----
WPTYPE	.	PLANNED WELLPATH	:WELLPATH TYPE
FACILITY	.	SEC.36-T06N-R67W	:FACILITY
SLOT	.	SLOT#20 ORR STATE 15N-35B-M (2129'FSL & 234'FEL, SEC.36):SLOT	:SLOT
WELLBORE	.	ORR STATE 15N-35B-M PWB	:WELLBORE
WELLPATH	.	ORR STATE 15N-35B-M PWP (REV-A.0)	:WELLPATH
MDREFPT	.	PRECISION 562 (25'KB) (RKB)	:MD REFERENCE POINT
TVDREFPT	.	PRECISION 562 (25'KB) (RKB)	:TVD REFERENCE POINT
LCLREFPT	.	SLOT	:LOCAL COORDINATE REFERENCE PT
VSAZIMUTH	.deg	260.45	:VERTICAL SECTION AZIMUTH
VSORIGN	.ft	0.00	:VERTICAL SECTION ORIGIN NORTH
VSORIGE	.ft	0.00	:VERTICAL SECTION ORIGIN EAST

~CURVE (WELLPATH) INFORMATION

#MNEM	.UNITS	:DESCRIPTION
#-----	.-----	:-----
DEPT	.ft	:MEASURED DEPTH
INC	.deg	:INCLINATION
AZI	.deg	:AZIMUTH
TVD	.ft	:TRUE VERTICAL DEPTH
SECT	.ft	:CROSS SECTION (CURTAIN/VERTICAL)
LOCALN	.ft	:LOCAL NORTH
LOCALE	.ft	:LOCAL EAST

ORR_STATE_15N-35B-M_PWP__REV-A.0_.1as

LAT .deg :LATITUDE
 LONG .deg :LONGITUDE
 DLS .deg/100ft :DOGLEG SEVERITY

~ASCII DATA

0.00	0.00	144.11	0.00	0.00	0.00	0.00	40.4420831	-104.8333839	0.00
25.00	0.00	144.11	25.00	0.00	0.00	0.00	40.4420831	-104.8333839	0.00
125.00	0.00	144.11	125.00	0.00	0.00	0.00	40.4420831	-104.8333839	0.00
225.00	0.00	144.11	225.00	0.00	0.00	0.00	40.4420831	-104.8333839	0.00
300.00	0.00	144.11	300.00	0.00	0.00	0.00	40.4420831	-104.8333839	0.00
325.00	0.50	144.11	325.00	-0.05	-0.09	0.06	40.4420828	-104.8333837	2.00
425.00	2.50	144.11	424.96	-1.21	-2.21	1.60	40.4420770	-104.8333781	2.00
525.00	4.50	144.11	524.77	-3.92	-7.15	5.18	40.4420634	-104.8333653	2.00
625.00	6.50	144.11	624.30	-8.17	-14.92	10.80	40.4420421	-104.8333451	2.00
725.00	8.50	144.11	723.44	-13.96	-25.49	18.45	40.4420131	-104.8333176	2.00
825.00	10.50	144.11	822.07	-21.28	-38.86	28.12	40.4419764	-104.8332829	2.00
925.00	12.50	144.11	920.05	-30.13	-55.02	39.81	40.4419320	-104.8332409	2.00
973.54	13.47	144.11	967.35	-34.97	-63.85	46.20	40.4419078	-104.8332179	2.00
1025.00	13.47	144.11	1017.40	-40.29	-73.56	53.23	40.4418811	-104.8331927	0.00
1125.00	13.47	144.11	1114.65	-50.62	-92.44	66.88	40.4418293	-104.8331436	0.00
1225.00	13.47	144.11	1211.89	-60.96	-111.31	80.54	40.4417775	-104.8330945	0.00
1325.00	13.47	144.11	1309.14	-71.29	-130.18	94.20	40.4417257	-104.8330455	0.00
1425.00	13.47	144.11	1406.39	-81.63	-149.05	107.85	40.4416739	-104.8329964	0.00
1525.00	13.47	144.11	1503.64	-91.96	-167.93	121.51	40.4416221	-104.8329474	0.00
1625.00	13.47	144.11	1600.89	-102.30	-186.80	135.16	40.4415703	-104.8328983	0.00
1725.00	13.47	144.11	1698.14	-112.64	-205.67	148.82	40.4415185	-104.8328492	0.00
1825.00	13.47	144.11	1795.39	-122.97	-224.54	162.48	40.4414667	-104.8328002	0.00
1925.00	13.47	144.11	1892.64	-133.31	-243.42	176.13	40.4414149	-104.8327511	0.00
2025.00	13.47	144.11	1989.89	-143.64	-262.29	189.79	40.4413631	-104.8327021	0.00
2125.00	13.47	144.11	2087.13	-153.98	-281.16	203.44	40.4413113	-104.8326530	0.00
2225.00	13.47	144.11	2184.38	-164.31	-300.03	217.10	40.4412595	-104.8326039	0.00
2325.00	13.47	144.11	2281.63	-174.65	-318.91	230.75	40.4412077	-104.8325549	0.00
2425.00	13.47	144.11	2378.88	-184.98	-337.78	244.41	40.4411559	-104.8325058	0.00
2525.00	13.47	144.11	2476.13	-195.32	-356.65	258.07	40.4411041	-104.8324568	0.00
2625.00	13.47	144.11	2573.38	-205.66	-375.52	271.72	40.4410523	-104.8324077	0.00
2725.00	13.47	144.11	2670.63	-215.99	-394.40	285.38	40.4410005	-104.8323587	0.00
2825.00	13.47	144.11	2767.88	-226.33	-413.27	299.03	40.4409487	-104.8323096	0.00
2925.00	13.47	144.11	2865.13	-236.66	-432.14	312.69	40.4408969	-104.8322605	0.00
3025.00	13.47	144.11	2962.37	-247.00	-451.01	326.35	40.4408451	-104.8322115	0.00
3125.00	13.47	144.11	3059.62	-257.33	-469.89	340.00	40.4407933	-104.8321624	0.00
3225.00	13.47	144.11	3156.87	-267.67	-488.76	353.66	40.4407415	-104.8321134	0.00
3325.00	13.47	144.11	3254.12	-278.00	-507.63	367.31	40.4406897	-104.8320643	0.00
3425.00	13.47	144.11	3351.37	-288.34	-526.50	380.97	40.4406379	-104.8320152	0.00
3525.00	13.47	144.11	3448.62	-298.68	-545.38	394.62	40.4405861	-104.8319662	0.00
3625.00	13.47	144.11	3545.87	-309.01	-564.25	408.28	40.4405342	-104.8319171	0.00
3725.00	13.47	144.11	3643.12	-319.35	-583.12	421.94	40.4404824	-104.8318681	0.00
3825.00	13.47	144.11	3740.37	-329.68	-601.99	435.59	40.4404306	-104.8318190	0.00
3925.00	13.47	144.11	3837.61	-340.02	-620.87	449.25	40.4403788	-104.8317700	0.00

ORR_STATE_15N-35B-M_PWP__REV-A.0_1as									
4025.00	13.47	144.11	3934.86	-350.35	-639.74	462.90	40.4403270	-104.8317209	0.00
4125.00	13.47	144.11	4032.11	-360.69	-658.61	476.56	40.4402752	-104.8316718	0.00
4225.00	13.47	144.11	4129.36	-371.02	-677.48	490.22	40.4402234	-104.8316228	0.00
4325.00	13.47	144.11	4226.61	-381.36	-696.36	503.87	40.4401716	-104.8315737	0.00
4425.00	13.47	144.11	4323.86	-391.70	-715.23	517.53	40.4401198	-104.8315247	0.00
4525.00	13.47	144.11	4421.11	-402.03	-734.10	531.18	40.4400680	-104.8314756	0.00
4625.00	13.47	144.11	4518.36	-412.37	-752.97	544.84	40.4400162	-104.8314266	0.00
4725.00	13.47	144.11	4615.61	-422.70	-771.85	558.49	40.4399644	-104.8313775	0.00
4825.00	13.47	144.11	4712.85	-433.04	-790.72	572.15	40.4399126	-104.8313284	0.00
4925.00	13.47	144.11	4810.10	-443.37	-809.59	585.81	40.4398608	-104.8312794	0.00
5025.00	13.47	144.11	4907.35	-453.71	-828.46	599.46	40.4398090	-104.8312303	0.00
5125.00	13.47	144.11	5004.60	-464.04	-847.34	613.12	40.4397572	-104.8311813	0.00
5225.00	13.47	144.11	5101.85	-474.38	-866.21	626.77	40.4397054	-104.8311322	0.00
5325.00	13.47	144.11	5199.10	-484.71	-885.08	640.43	40.4396536	-104.8310832	0.00
5425.00	13.47	144.11	5296.35	-495.05	-903.95	654.08	40.4396018	-104.8310341	0.00
5525.00	13.47	144.11	5393.60	-505.39	-922.83	667.74	40.4395500	-104.8309850	0.00
5625.00	13.47	144.11	5490.85	-515.72	-941.70	681.40	40.4394982	-104.8309360	0.00
5725.00	13.47	144.11	5588.09	-526.06	-960.57	695.05	40.4394464	-104.8308869	0.00
5825.00	13.47	144.11	5685.34	-536.39	-979.45	708.71	40.4393946	-104.8308379	0.00
5925.00	13.47	144.11	5782.59	-546.73	-998.32	722.36	40.4393428	-104.8307888	0.00
6025.00	13.47	144.11	5879.84	-557.06	-1017.19	736.02	40.4392910	-104.8307398	0.00
6125.00	13.47	144.11	5977.09	-567.40	-1036.06	749.68	40.4392392	-104.8306907	0.00
6225.00	13.47	144.11	6074.34	-577.73	-1054.94	763.33	40.4391874	-104.8306416	0.00
6325.00	13.47	144.11	6171.59	-588.07	-1073.81	776.99	40.4391355	-104.8305926	0.00
6394.26	13.47	144.11	6238.94	-595.23	-1086.88	786.45	40.4390997	-104.8305586	0.00
6425.00	12.04	154.86	6268.93	-597.68	-1092.68	789.91	40.4390837	-104.8305462	9.00
6525.00	11.43	200.16	6367.04	-595.57	-1111.46	790.92	40.4390322	-104.8305425	9.00
6625.00	16.63	231.36	6464.16	-578.12	-1129.74	776.31	40.4389820	-104.8305950	9.00
6725.00	24.13	245.90	6557.89	-545.77	-1147.05	746.41	40.4389345	-104.8307024	9.00
6825.00	32.37	253.62	6645.93	-499.30	-1162.98	701.98	40.4388908	-104.8308621	9.00
6925.00	40.91	258.42	6726.11	-439.88	-1177.13	644.10	40.4388519	-104.8310700	9.00
7025.00	49.59	261.80	6796.46	-368.95	-1189.16	574.19	40.4388189	-104.8313211	9.00
7125.00	58.34	264.40	6855.24	-288.27	-1198.77	493.99	40.4387926	-104.8316092	9.00
7225.00	67.14	266.54	6901.00	-199.82	-1205.72	405.47	40.4387735	-104.8319273	9.00
7325.00	75.96	268.43	6932.63	-105.78	-1209.84	310.80	40.4387622	-104.8322674	9.00
7425.00	84.79	270.17	6949.33	-8.46	-1211.03	212.32	40.4387589	-104.8326212	9.00
7487.40	90.31	271.22	6952.00	52.86	-1210.27	150.01	40.4387610	-104.8328450	9.00
7525.00	90.31	271.22	6951.80	89.80	-1209.47	112.41	40.4387632	-104.8329801	0.00
7625.00	90.31	271.22	6951.26	188.04	-1207.33	12.44	40.4387691	-104.8333392	0.00
7725.00	90.31	271.22	6950.72	286.27	-1205.20	-87.54	40.4387749	-104.8336984	0.00
7825.00	90.31	271.22	6950.19	384.51	-1203.06	-187.51	40.4387808	-104.8340575	0.00
7925.00	90.31	271.22	6949.65	482.74	-1200.92	-287.49	40.4387867	-104.8344167	0.00
8025.00	90.31	271.22	6949.11	580.98	-1198.79	-387.47	40.4387925	-104.8347758	0.00
8125.00	90.31	271.22	6948.58	679.22	-1196.65	-487.44	40.4387984	-104.8351350	0.00
8225.00	90.31	271.22	6948.04	777.45	-1194.51	-587.42	40.4388042	-104.8354942	0.00
8325.00	90.31	271.22	6947.50	875.69	-1192.38	-687.39	40.4388101	-104.8358533	0.00
8425.00	90.31	271.22	6946.97	973.92	-1190.24	-787.37	40.4388160	-104.8362125	0.00
8525.00	90.31	271.22	6946.43	1072.16	-1188.10	-887.34	40.4388218	-104.8365716	0.00

ORR_STATE_15N-35B-M_PWP__REV-A.0_1as									
8625.00	90.31	271.22	6945.89	1170.40	-1185.97	-987.32	40.4388277	-104.8369308	0.00
8725.00	90.31	271.22	6945.35	1268.63	-1183.83	-1087.30	40.4388335	-104.8372899	0.00
8825.00	90.31	271.22	6944.82	1366.87	-1181.69	-1187.27	40.4388394	-104.8376491	0.00
8925.00	90.31	271.22	6944.28	1465.10	-1179.56	-1287.25	40.4388452	-104.8380083	0.00
9025.00	90.31	271.22	6943.74	1563.34	-1177.42	-1387.22	40.4388511	-104.8383674	0.00
9125.00	90.31	271.22	6943.21	1661.57	-1175.28	-1487.20	40.4388569	-104.8387266	0.00
9225.00	90.31	271.22	6942.67	1759.81	-1173.15	-1587.17	40.4388628	-104.8390857	0.00
9325.00	90.31	271.22	6942.13	1858.05	-1171.01	-1687.15	40.4388686	-104.8394449	0.00
9425.00	90.31	271.22	6941.60	1956.28	-1168.87	-1787.13	40.4388745	-104.8398040	0.00
9525.00	90.31	271.22	6941.06	2054.52	-1166.74	-1887.10	40.4388803	-104.8401632	0.00
9625.00	90.31	271.22	6940.52	2152.75	-1164.60	-1987.08	40.4388861	-104.8405224	0.00
9725.00	90.31	271.22	6939.98	2250.99	-1162.46	-2087.05	40.4388920	-104.8408815	0.00
9825.00	90.31	271.22	6939.45	2349.22	-1160.33	-2187.03	40.4388978	-104.8412407	0.00
9925.00	90.31	271.22	6938.91	2447.46	-1158.19	-2287.01	40.4389037	-104.8415998	0.00
10025.00	90.31	271.22	6938.37	2545.70	-1156.05	-2386.98	40.4389095	-104.8419590	0.00
10125.00	90.31	271.22	6937.84	2643.93	-1153.92	-2486.96	40.4389153	-104.8423182	0.00
10225.00	90.31	271.22	6937.30	2742.17	-1151.78	-2586.93	40.4389212	-104.8426773	0.00
10325.00	90.31	271.22	6936.76	2840.40	-1149.64	-2686.91	40.4389270	-104.8430365	0.00
10425.00	90.31	271.22	6936.23	2938.64	-1147.51	-2786.88	40.4389329	-104.8433956	0.00
10525.00	90.31	271.22	6935.69	3036.87	-1145.37	-2886.86	40.4389387	-104.8437548	0.00
10625.00	90.31	271.22	6935.15	3135.11	-1143.23	-2986.84	40.4389445	-104.8441140	0.00
10725.00	90.31	271.22	6934.61	3233.35	-1141.10	-3086.81	40.4389504	-104.8444731	0.00
10825.00	90.31	271.22	6934.08	3331.58	-1138.96	-3186.79	40.4389562	-104.8448323	0.00
10925.00	90.31	271.22	6933.54	3429.82	-1136.82	-3286.76	40.4389620	-104.8451914	0.00
11025.00	90.31	271.22	6933.00	3528.05	-1134.69	-3386.74	40.4389678	-104.8455506	0.00
11125.00	90.31	271.22	6932.47	3626.29	-1132.55	-3486.71	40.4389737	-104.8459097	0.00
11225.00	90.31	271.22	6931.93	3724.53	-1130.41	-3586.69	40.4389795	-104.8462689	0.00
11325.00	90.31	271.22	6931.39	3822.76	-1128.28	-3686.67	40.4389853	-104.8466281	0.00
11425.00	90.31	271.22	6930.86	3921.00	-1126.14	-3786.64	40.4389911	-104.8469872	0.00
11525.00	90.31	271.22	6930.32	4019.23	-1124.00	-3886.62	40.4389970	-104.8473464	0.00
11625.00	90.31	271.22	6929.78	4117.47	-1121.87	-3986.59	40.4390028	-104.8477055	0.00
11725.00	90.31	271.22	6929.24	4215.70	-1119.73	-4086.57	40.4390086	-104.8480647	0.00
11825.00	90.31	271.22	6928.71	4313.94	-1117.59	-4186.54	40.4390144	-104.8484239	0.00
11925.00	90.31	271.22	6928.17	4412.18	-1115.46	-4286.52	40.4390202	-104.8487830	0.00
12025.00	90.31	271.22	6927.63	4510.41	-1113.32	-4386.50	40.4390261	-104.8491422	0.00
12125.00	90.31	271.22	6927.10	4608.65	-1111.18	-4486.47	40.4390319	-104.8495013	0.00
12225.00	90.31	271.22	6926.56	4706.88	-1109.05	-4586.45	40.4390377	-104.8498605	0.00
12325.00	90.31	271.22	6926.02	4805.12	-1106.91	-4686.42	40.4390435	-104.8502197	0.00
12425.00	90.31	271.22	6925.49	4903.35	-1104.77	-4786.40	40.4390493	-104.8505788	0.00
12525.00	90.31	271.22	6924.95	5001.59	-1102.64	-4886.37	40.4390551	-104.8509380	0.00
12625.00	90.31	271.22	6924.41	5099.83	-1100.50	-4986.35	40.4390609	-104.8512971	0.00
12725.00	90.31	271.22	6923.87	5198.06	-1098.36	-5086.33	40.4390667	-104.8516563	0.00
12825.00	90.31	271.22	6923.34	5296.30	-1096.23	-5186.30	40.4390725	-104.8520155	0.00
12925.00	90.31	271.22	6922.80	5394.53	-1094.09	-5286.28	40.4390784	-104.8523746	0.00
13025.00	90.31	271.22	6922.26	5492.77	-1091.95	-5386.25	40.4390842	-104.8527338	0.00
13125.00	90.31	271.22	6921.73	5591.00	-1089.82	-5486.23	40.4390900	-104.8530929	0.00
13225.00	90.31	271.22	6921.19	5689.24	-1087.68	-5586.20	40.4390958	-104.8534521	0.00
13325.00	90.31	271.22	6920.65	5787.48	-1085.54	-5686.18	40.4391016	-104.8538113	0.00

				ORR_STATE_15N-35B-M_PWP__REV-A.0_.las					
13425.00	90.31	271.22	6920.12	5885.71	-1083.41	-5786.16	40.4391074	-104.8541704	0.00
13525.00	90.31	271.22	6919.58	5983.95	-1081.27	-5886.13	40.4391132	-104.8545296	0.00
13625.00	90.31	271.22	6919.04	6082.18	-1079.13	-5986.11	40.4391190	-104.8548887	0.00
13725.00	90.31	271.22	6918.50	6180.42	-1077.00	-6086.08	40.4391248	-104.8552479	0.00
13825.00	90.31	271.22	6917.97	6278.66	-1074.86	-6186.06	40.4391306	-104.8556071	0.00
13925.00	90.31	271.22	6917.43	6376.89	-1072.72	-6286.03	40.4391364	-104.8559662	0.00
14005.12	90.31	271.22	6917.00	6455.60	-1071.01	-6366.14	40.4391410	-104.8562540	0.00



Planned Wellpath Report

ORR STATE 15N-35B-M PWP (REV-A.0)

Page 1 of 9



REFERENCE WELLPATH IDENTIFICATION

Operator	SYNERGY RESOURCES CORPORATION	Slot	SLOT#20 ORR STATE 15N-35B-M (2129'FSL & 234'FEL, SEC.36)
Area	COLORADO	Well	ORR STATE 15N-35B-M
Field	WELD COUNTY (NAD83,TRUE NORTH)	Wellbore	ORR STATE 15N-35B-M PWB
Facility	SEC.36-T06N-R67W		

REPORT SETUP INFORMATION

Projection System	NAD83 / Lambert Colorado SP, Northern Zone (501), US feet	Software System	WellArchitect® 5.0
North Reference	True	User	Wagnjam
Scale	0.999962	Report Generated	10/14/2016 at 1:01:49 AM
Convergence at slot	0.44° East	Database/Source file	WA_DEN_Denver_Defn/ORR_STATE_15N-35B-M_PWP_REV-A.0_.xml

WELLPATH LOCATION

	Local coordinates		Grid coordinates		Geographic coordinates	
	North[ft]	East[ft]	Easting[US ft]	Northing[US ft]	Latitude	Longitude
Slot Location	-142.08	299.22	3185542.49	1404588.60	40°26'31.499"N	104°50'00.182"W
Facility Reference Pt			3185242.22	1404728.43	40°26'32.903"N	104°50'04.052"W
Field Reference Pt			3171284.48	1426358.81	40°30'07.643"N	104°53'02.634"W

WELLPATH DATUM

Calculation method	Minimum curvature	PRECISION 562 (25'KB) (RKB) to Facility Vertical Datum	4749.00ft
Horizontal Reference Pt	Slot	PRECISION 562 (25'KB) (RKB) to Mean Sea Level	4749.00ft
Vertical Reference Pt	PRECISION 562 (25'KB) (RKB)	PRECISION 562 (25'KB) (RKB) to Mud Line at Slot (SLOT#20 ORR STATE 15N-35B-M (2129'FSL & 234'FEL, SEC.36))	4749.00ft
MD Reference Pt	PRECISION 562 (25'KB) (RKB)	Section Origin	N 0.00, E 0.00 ft
Field Vertical Reference	Mean Sea Level	Section Azimuth	260.45°



Planned Wellpath Report

ORR STATE 15N-35B-M PWP (REV-A.0)

Page 2 of 9



REFERENCE WELLPATH IDENTIFICATION

Operator	SYNERGY RESOURCES CORPORATION	Slot	SLOT#20 ORR STATE 15N-35B-M (2129'FSL & 234'FEL, SEC.36)
Area	COLORADO	Well	ORR STATE 15N-35B-M
Field	WELD COUNTY (NAD83,TRUE NORTH)	Wellbore	ORR STATE 15N-35B-M PWB
Facility	SEC.36-T06N-R67W		

WELLPATH DATA (148 stations) † = interpolated/extrapolated station

MD [ft]	Inclination [°]	Azimuth [°]	TVD [ft]	Vert Sect [ft]	North [ft]	East [ft]	DLS [°/100ft]	Comments
0.00†	0.000	144.111	0.00	0.00	0.00	0.00	0.00	
25.00	0.000	144.111	25.00	0.00	0.00	0.00	0.00	Tie On
125.00†	0.000	144.111	125.00	0.00	0.00	0.00	0.00	
225.00†	0.000	144.111	225.00	0.00	0.00	0.00	0.00	
300.00	0.000	144.111	300.00	0.00	0.00	0.00	0.00	End of Tangent
325.00†	0.500	144.111	325.00	-0.05	-0.09	0.06	2.00	
425.00†	2.500	144.111	424.96	-1.21	-2.21	1.60	2.00	
525.00†	4.500	144.111	524.77	-3.92	-7.15	5.18	2.00	
625.00†	6.500	144.111	624.30	-8.17	-14.92	10.80	2.00	
725.00†	8.500	144.111	723.44	-13.96	-25.49	18.45	2.00	
825.00†	10.500	144.111	822.07	-21.28	-38.86	28.12	2.00	
925.00†	12.500	144.111	920.05	-30.13	-55.02	39.81	2.00	
973.54	13.471	144.111	967.35	-34.97	-63.85	46.20	2.00	End of Build
1025.00†	13.471	144.111	1017.40	-40.29	-73.56	53.23	0.00	
1125.00†	13.471	144.111	1114.65	-50.62	-92.44	66.88	0.00	
1225.00†	13.471	144.111	1211.89	-60.96	-111.31	80.54	0.00	
1325.00†	13.471	144.111	1309.14	-71.29	-130.18	94.20	0.00	
1425.00†	13.471	144.111	1406.39	-81.63	-149.05	107.85	0.00	
1525.00†	13.471	144.111	1503.64	-91.96	-167.93	121.51	0.00	
1625.00†	13.471	144.111	1600.89	-102.30	-186.80	135.16	0.00	
1725.00†	13.471	144.111	1698.14	-112.64	-205.67	148.82	0.00	
1825.00†	13.471	144.111	1795.39	-122.97	-224.54	162.48	0.00	
1925.00†	13.471	144.111	1892.64	-133.31	-243.42	176.13	0.00	
2025.00†	13.471	144.111	1989.89	-143.64	-262.29	189.79	0.00	
2125.00†	13.471	144.111	2087.13	-153.98	-281.16	203.44	0.00	
2225.00†	13.471	144.111	2184.38	-164.31	-300.03	217.10	0.00	
2325.00†	13.471	144.111	2281.63	-174.65	-318.91	230.75	0.00	
2425.00†	13.471	144.111	2378.88	-184.98	-337.78	244.41	0.00	
2525.00†	13.471	144.111	2476.13	-195.32	-356.65	258.07	0.00	
2625.00†	13.471	144.111	2573.38	-205.66	-375.52	271.72	0.00	



Planned Wellpath Report

ORR STATE 15N-35B-M PWP (REV-A.0)

Page 3 of 9



REFERENCE WELLPATH IDENTIFICATION

Operator	SYNERGY RESOURCES CORPORATION	Slot	SLOT#20 ORR STATE 15N-35B-M (2129'FSL & 234'FEL, SEC.36)
Area	COLORADO	Well	ORR STATE 15N-35B-M
Field	WELD COUNTY (NAD83,TRUE NORTH)	Wellbore	ORR STATE 15N-35B-M PWB
Facility	SEC.36-T06N-R67W		

WELLPATH DATA (148 stations) † = interpolated/extrapolated station

MD [ft]	Inclination [°]	Azimuth [°]	TVD [ft]	Vert Sect [ft]	North [ft]	East [ft]	DLS [°/100ft]	Comments
2725.00†	13.471	144.111	2670.63	-215.99	-394.40	285.38	0.00	
2825.00†	13.471	144.111	2767.88	-226.33	-413.27	299.03	0.00	
2925.00†	13.471	144.111	2865.13	-236.66	-432.14	312.69	0.00	
3025.00†	13.471	144.111	2962.37	-247.00	-451.01	326.35	0.00	
3125.00†	13.471	144.111	3059.62	-257.33	-469.89	340.00	0.00	
3225.00†	13.471	144.111	3156.87	-267.67	-488.76	353.66	0.00	
3325.00†	13.471	144.111	3254.12	-278.00	-507.63	367.31	0.00	
3425.00†	13.471	144.111	3351.37	-288.34	-526.50	380.97	0.00	
3525.00†	13.471	144.111	3448.62	-298.68	-545.38	394.62	0.00	
3625.00†	13.471	144.111	3545.87	-309.01	-564.25	408.28	0.00	
3725.00†	13.471	144.111	3643.12	-319.35	-583.12	421.94	0.00	
3825.00†	13.471	144.111	3740.37	-329.68	-601.99	435.59	0.00	
3925.00†	13.471	144.111	3837.61	-340.02	-620.87	449.25	0.00	
4025.00†	13.471	144.111	3934.86	-350.35	-639.74	462.90	0.00	
4125.00†	13.471	144.111	4032.11	-360.69	-658.61	476.56	0.00	
4225.00†	13.471	144.111	4129.36	-371.02	-677.48	490.22	0.00	
4325.00†	13.471	144.111	4226.61	-381.36	-696.36	503.87	0.00	
4425.00†	13.471	144.111	4323.86	-391.70	-715.23	517.53	0.00	
4525.00†	13.471	144.111	4421.11	-402.03	-734.10	531.18	0.00	
4625.00†	13.471	144.111	4518.36	-412.37	-752.97	544.84	0.00	
4725.00†	13.471	144.111	4615.61	-422.70	-771.85	558.49	0.00	
4825.00†	13.471	144.111	4712.85	-433.04	-790.72	572.15	0.00	
4925.00†	13.471	144.111	4810.10	-443.37	-809.59	585.81	0.00	
5025.00†	13.471	144.111	4907.35	-453.71	-828.46	599.46	0.00	
5125.00†	13.471	144.111	5004.60	-464.04	-847.34	613.12	0.00	
5225.00†	13.471	144.111	5101.85	-474.38	-866.21	626.77	0.00	
5325.00†	13.471	144.111	5199.10	-484.71	-885.08	640.43	0.00	
5425.00†	13.471	144.111	5296.35	-495.05	-903.95	654.08	0.00	
5525.00†	13.471	144.111	5393.60	-505.39	-922.83	667.74	0.00	
5625.00†	13.471	144.111	5490.85	-515.72	-941.70	681.40	0.00	



Planned Wellpath Report

ORR STATE 15N-35B-M PWP (REV-A.0)

Page 4 of 9



REFERENCE WELLPATH IDENTIFICATION			
Operator	SYNERGY RESOURCES CORPORATION	Slot	SLOT#20 ORR STATE 15N-35B-M (2129'FSL & 234'FEL, SEC.36)
Area	COLORADO	Well	ORR STATE 15N-35B-M
Field	WELD COUNTY (NAD83,TRUE NORTH)	Wellbore	ORR STATE 15N-35B-M PWB
Facility	SEC.36-T06N-R67W		

WELLPATH DATA (148 stations) † = interpolated/extrapolated station

MD [ft]	Inclination [°]	Azimuth [°]	TVD [ft]	Vert Sect [ft]	North [ft]	East [ft]	DLS [°/100ft]	Comments
5725.00†	13.471	144.111	5588.09	-526.06	-960.57	695.05	0.00	
5825.00†	13.471	144.111	5685.34	-536.39	-979.45	708.71	0.00	
5925.00†	13.471	144.111	5782.59	-546.73	-998.32	722.36	0.00	
6025.00†	13.471	144.111	5879.84	-557.06	-1017.19	736.02	0.00	
6125.00†	13.471	144.111	5977.09	-567.40	-1036.06	749.68	0.00	
6225.00†	13.471	144.111	6074.34	-577.73	-1054.94	763.33	0.00	
6325.00†	13.471	144.111	6171.59	-588.07	-1073.81	776.99	0.00	
6394.26	13.471	144.111	6238.94	-595.23	-1086.88	786.45	0.00	End of Tangent
6425.00†	12.038	154.863	6268.93	-597.68	-1092.68	789.91	9.00	
6525.00†	11.430	200.157	6367.04	-595.57	-1111.46	790.92	9.00	
6625.00†	16.626	231.359	6464.16	-578.12	-1129.74	776.31	9.00	
6725.00†	24.130	245.903	6557.89	-545.77	-1147.05	746.41	9.00	
6825.00†	32.373	253.615	6645.93	-499.30	-1162.98	701.98	9.00	
6925.00†	40.910	258.420	6726.11	-439.88	-1177.13	644.10	9.00	
6965.65†	44.425	259.918	6756.00	-412.34	-1182.30	617.04	9.00	SHARON SPRINGS
7021.22†	49.257	261.687	6794.00	-371.82	-1188.75	577.03	9.00	NIO-A
7025.00†	49.587	261.798	6796.46	-368.95	-1189.16	574.19	9.00	
7125.00†	58.340	264.395	6855.24	-288.27	-1198.77	493.99	9.00	
7225.00†	67.136	266.542	6901.00	-199.82	-1205.72	405.47	9.00	
7325.00†	75.957	268.425	6932.63	-105.78	-1209.84	310.80	9.00	
7425.00†	84.792	270.167	6949.33	-8.46	-1211.03	212.32	9.00	
7487.40	90.308	271.224	6952.00†	52.86	-1210.27	150.01	9.00	End of 3D Arc
7525.00†	90.308	271.224	6951.80	89.80	-1209.47	112.41	0.00	
7625.00†	90.308	271.224	6951.26	188.04	-1207.33	12.44	0.00	
7725.00†	90.308	271.224	6950.72	286.27	-1205.20	-87.54	0.00	
7825.00†	90.308	271.224	6950.19	384.51	-1203.06	-187.51	0.00	
7925.00†	90.308	271.224	6949.65	482.74	-1200.92	-287.49	0.00	
8025.00†	90.308	271.224	6949.11	580.98	-1198.79	-387.47	0.00	
8125.00†	90.308	271.224	6948.58	679.22	-1196.65	-487.44	0.00	
8225.00†	90.308	271.224	6948.04	777.45	-1194.51	-587.42	0.00	



Planned Wellpath Report

ORR STATE 15N-35B-M PWP (REV-A.0)

Page 5 of 9



REFERENCE WELLPATH IDENTIFICATION

Operator	SYNERGY RESOURCES CORPORATION	Slot	SLOT#20 ORR STATE 15N-35B-M (2129'FSL & 234'FEL, SEC.36)
Area	COLORADO	Well	ORR STATE 15N-35B-M
Field	WELD COUNTY (NAD83,TRUE NORTH)	Wellbore	ORR STATE 15N-35B-M PWB
Facility	SEC.36-T06N-R67W		

WELLPATH DATA (148 stations) † = interpolated/extrapolated station

MD [ft]	Inclination [°]	Azimuth [°]	TVD [ft]	Vert Sect [ft]	North [ft]	East [ft]	DLS [°/100ft]	Comments
8325.00†	90.308	271.224	6947.50	875.69	-1192.38	-687.39	0.00	
8425.00†	90.308	271.224	6946.97	973.92	-1190.24	-787.37	0.00	
8525.00†	90.308	271.224	6946.43	1072.16	-1188.10	-887.34	0.00	
8625.00†	90.308	271.224	6945.89	1170.40	-1185.97	-987.32	0.00	
8725.00†	90.308	271.224	6945.35	1268.63	-1183.83	-1087.30	0.00	
8825.00†	90.308	271.224	6944.82	1366.87	-1181.69	-1187.27	0.00	
8925.00†	90.308	271.224	6944.28	1465.10	-1179.56	-1287.25	0.00	
9025.00†	90.308	271.224	6943.74	1563.34	-1177.42	-1387.22	0.00	
9125.00†	90.308	271.224	6943.21	1661.57	-1175.28	-1487.20	0.00	
9225.00†	90.308	271.224	6942.67	1759.81	-1173.15	-1587.17	0.00	
9325.00†	90.308	271.224	6942.13	1858.05	-1171.01	-1687.15	0.00	
9425.00†	90.308	271.224	6941.60	1956.28	-1168.87	-1787.13	0.00	
9525.00†	90.308	271.224	6941.06	2054.52	-1166.74	-1887.10	0.00	
9625.00†	90.308	271.224	6940.52	2152.75	-1164.60	-1987.08	0.00	
9725.00†	90.308	271.224	6939.98	2250.99	-1162.46	-2087.05	0.00	
9825.00†	90.308	271.224	6939.45	2349.22	-1160.33	-2187.03	0.00	
9925.00†	90.308	271.224	6938.91	2447.46	-1158.19	-2287.01	0.00	
10025.00†	90.308	271.224	6938.37	2545.70	-1156.05	-2386.98	0.00	
10125.00†	90.308	271.224	6937.84	2643.93	-1153.92	-2486.96	0.00	
10225.00†	90.308	271.224	6937.30	2742.17	-1151.78	-2586.93	0.00	
10325.00†	90.308	271.224	6936.76	2840.40	-1149.64	-2686.91	0.00	
10425.00†	90.308	271.224	6936.23	2938.64	-1147.51	-2786.88	0.00	
10525.00†	90.308	271.224	6935.69	3036.87	-1145.37	-2886.86	0.00	
10625.00†	90.308	271.224	6935.15	3135.11	-1143.23	-2986.84	0.00	
10725.00†	90.308	271.224	6934.61	3233.35	-1141.10	-3086.81	0.00	
10825.00†	90.308	271.224	6934.08	3331.58	-1138.96	-3186.79	0.00	
10925.00†	90.308	271.224	6933.54	3429.82	-1136.82	-3286.76	0.00	
11025.00†	90.308	271.224	6933.00	3528.05	-1134.69	-3386.74	0.00	
11125.00†	90.308	271.224	6932.47	3626.29	-1132.55	-3486.71	0.00	
11225.00†	90.308	271.224	6931.93	3724.53	-1130.41	-3586.69	0.00	



Planned Wellpath Report

ORR STATE 15N-35B-M PWP (REV-A.0)

Page 6 of 9



REFERENCE WELLPATH IDENTIFICATION			
Operator	SYNERGY RESOURCES CORPORATION	Slot	SLOT#20 ORR STATE 15N-35B-M (2129'FSL & 234'FEL, SEC.36)
Area	COLORADO	Well	ORR STATE 15N-35B-M
Field	WELD COUNTY (NAD83,TRUE NORTH)	Wellbore	ORR STATE 15N-35B-M PWB
Facility	SEC.36-T06N-R67W		

WELLPATH DATA (148 stations) † = interpolated/extrapolated station

MD [ft]	Inclination [°]	Azimuth [°]	TVD [ft]	Vert Sect [ft]	North [ft]	East [ft]	DLS [°/100ft]	Comments
11325.00†	90.308	271.224	6931.39	3822.76	-1128.28	-3686.67	0.00	
11425.00†	90.308	271.224	6930.86	3921.00	-1126.14	-3786.64	0.00	
11525.00†	90.308	271.224	6930.32	4019.23	-1124.00	-3886.62	0.00	
11625.00†	90.308	271.224	6929.78	4117.47	-1121.87	-3986.59	0.00	
11725.00†	90.308	271.224	6929.24	4215.70	-1119.73	-4086.57	0.00	
11825.00†	90.308	271.224	6928.71	4313.94	-1117.59	-4186.54	0.00	
11925.00†	90.308	271.224	6928.17	4412.18	-1115.46	-4286.52	0.00	
12025.00†	90.308	271.224	6927.63	4510.41	-1113.32	-4386.50	0.00	
12125.00†	90.308	271.224	6927.10	4608.65	-1111.18	-4486.47	0.00	
12225.00†	90.308	271.224	6926.56	4706.88	-1109.05	-4586.45	0.00	
12325.00†	90.308	271.224	6926.02	4805.12	-1106.91	-4686.42	0.00	
12425.00†	90.308	271.224	6925.49	4903.35	-1104.77	-4786.40	0.00	
12525.00†	90.308	271.224	6924.95	5001.59	-1102.64	-4886.37	0.00	
12625.00†	90.308	271.224	6924.41	5099.83	-1100.50	-4986.35	0.00	
12725.00†	90.308	271.224	6923.87	5198.06	-1098.36	-5086.33	0.00	
12825.00†	90.308	271.224	6923.34	5296.30	-1096.23	-5186.30	0.00	
12925.00†	90.308	271.224	6922.80	5394.53	-1094.09	-5286.28	0.00	
13025.00†	90.308	271.224	6922.26	5492.77	-1091.95	-5386.25	0.00	
13125.00†	90.308	271.224	6921.73	5591.00	-1089.82	-5486.23	0.00	
13225.00†	90.308	271.224	6921.19	5689.24	-1087.68	-5586.20	0.00	
13325.00†	90.308	271.224	6920.65	5787.48	-1085.54	-5686.18	0.00	
13425.00†	90.308	271.224	6920.12	5885.71	-1083.41	-5786.16	0.00	
13525.00†	90.308	271.224	6919.58	5983.95	-1081.27	-5886.13	0.00	
13625.00†	90.308	271.224	6919.04	6082.18	-1079.13	-5986.11	0.00	
13725.00†	90.308	271.224	6918.50	6180.42	-1077.00	-6086.08	0.00	
13825.00†	90.308	271.224	6917.97	6278.66	-1074.86	-6186.06	0.00	
13925.00†	90.308	271.224	6917.43	6376.89	-1072.72	-6286.03	0.00	
14005.12	90.308	271.224	6917.00 ²	6455.60	-1071.01	-6366.14	0.00	End of Tangent



Planned Wellpath Report

ORR STATE 15N-35B-M PWP (REV-A.0)

Page 7 of 9



REFERENCE WELLPATH IDENTIFICATION			
Operator	SYNERGY RESOURCES CORPORATION	Slot	SLOT#20 ORR STATE 15N-35B-M (2129'FSL & 234'FEL, SEC.36)
Area	COLORADO	Well	ORR STATE 15N-35B-M
Field	WELD COUNTY (NAD83,TRUE NORTH)	Wellbore	ORR STATE 15N-35B-M PWB
Facility	SEC.36-T06N-R67W		

HOLE & CASING SECTIONS

- Ref Wellbore: ORR STATE 15N-35B-M PWB

Ref Wellpath: ORR STATE 15N-35B-M PWP (REV-A.0)

String/Diameter	Start MD [ft]	End MD [ft]	Interval [ft]	Start TVD [ft]	End TVD [ft]	Start N/S [ft]	Start E/W [ft]	End N/S [ft]	End E/W [ft]
13.5in Open Hole	25.00	1800.00	1775.00	25.00	1771.08	0.00	0.00	-219.83	159.06
8.5in Open Hole	1800.00	14100.00	12300.00	1771.08	N/A	-219.83	159.06	N/A	N/A

TARGETS

Name	MD [ft]	TVD [ft]	North [ft]	East [ft]	Grid East [US ft]	Grid North [US ft]	Latitude	Longitude	Shape
SEC.31-T06N-R66W		5.00	142.08	-299.22	3185242.22	1404728.43	40°26'32.903"N	104°50'04.052"W	polygon
SEC.31-T06N-R67W		5.00	142.08	-299.22	3185242.22	1404728.43	40°26'32.903"N	104°50'04.052"W	point
SEC.32-T06N-R66W		5.00	142.08	-299.22	3185242.22	1404728.43	40°26'32.903"N	104°50'04.052"W	polygon
SEC.32-T06N-R67W		5.00	142.08	-299.22	3185242.22	1404728.43	40°26'32.903"N	104°50'04.052"W	point
SEC.35-T06N-R67W		5.00	142.08	-299.22	3185242.22	1404728.43	40°26'32.903"N	104°50'04.052"W	polygon
SEC.36-T06N-R67W		5.00	142.08	-299.22	3185242.22	1404728.43	40°26'32.903"N	104°50'04.052"W	polygon
2) ORR STATE 15N-35B-M BHL ON PLAT REV-1 (715'FSL & 1683'FEL, SEC.35)	14005.12	6917.00	-1071.01	-6366.14	3179184.84	1403469.81	40°26'20.908"N	104°51'22.514"W	circle
1) ORR STATE 15N-35B-M ENTRY POINT (929'FSL & 75'FEL, SEC.36)	7487.40	6952.00	-1210.27	150.01	3185701.59	1403379.54	40°26'19.540"N	104°49'58.242"W	circle
SEC.31/21-T06N-R67W 460' SETBACK		7117.00	142.08	-299.22	3185242.22	1404728.43	40°26'32.903"N	104°50'04.052"W	point



Planned Wellpath Report

ORR STATE 15N-35B-M PWP (REV-A.0)
Page 8 of 9



REFERENCE WELLPATH IDENTIFICATION			
Operator	SYNERGY RESOURCES CORPORATION	Slot	SLOT#20 ORR STATE 15N-35B-M (2129'FSL & 234'FEL, SEC.36)
Area	COLORADO	Well	ORR STATE 15N-35B-M
Field	WELD COUNTY (NAD83,TRUE NORTH)	Wellbore	ORR STATE 15N-35B-M PWB
Facility	SEC.36-T06N-R67W		

SURVEY PROGRAM -				
Ref Wellbore: ORR STATE 15N-35B-M PWB		Ref Wellpath: ORR STATE 15N-35B-M PWP (REV-A.0)		
Start MD [ft]	End MD [ft]	Positional Uncertainty Model	Log Name/Comment	Wellbore
25.00	14005.12	BHI NaviTrak (Standard)		ORR STATE 15N-35B-M PWB



Planned Wellpath Report

ORR STATE 15N-35B-M PWP (REV-A.0)

Page 9 of 9



REFERENCE WELLPATH IDENTIFICATION			
Operator	SYNERGY RESOURCES CORPORATION	Slot	SLOT#20 ORR STATE 15N-35B-M (2129'FSL & 234'FEL, SEC.36)
Area	COLORADO	Well	ORR STATE 15N-35B-M
Field	WELD COUNTY (NAD83,TRUE NORTH)	Wellbore	ORR STATE 15N-35B-M PWB
Facility	SEC.36-T06N-R67W		

WELLPATH COMMENTS				
MD [ft]	Inclination [°]	Azimuth [°]	TVD [ft]	Comment
6965.65	44.425	259.918	6756.00	SHARON SPRINGS
7021.22	49.257	261.687	6794.00	NIO-A