

SYNERGY RESOURCES CORPORATION

Location: COLORADO Slot: SLOT#18 ORR STATE 23N-35C-M (2169'FSL & 234'FEL, SEC.36)
Field: WELD COUNTY (NAD83,TRUE NORTH) Well: ORR STATE 23N-35C-M
Facility: SEC.36-T06N-R67W Wellbore: ORR STATE 23N-35C-M PWB

Plot reference wellpath is ORR STATE 23N-35C-M PWP (REV-A.0)
Grid System: NAD83 / Lambert Colorado SP, Northern Zone (501), US feet
True vertical depths are referenced to PRECISION 562 (25KB) (RKB) * = Wellpath was transformed from a different geodetic datum
Measured depths are referenced to PRECISION 562 (25KB) (RKB) North Reference: True north
PRECISION 562 (25KB) (RKB) to Mean Sea Level: 4749 feet Scale: True distance
Mean Sea Level to Mud line (At Slot: SLOT#18 ORR STATE 23N-35C-M (2169'FSL & 234'FEL, SEC.36)): 0 feet Depths are in feet
Coordinates are in feet referenced to Slot Created by: wagnjam on 2016-10-13
Database: WA_DEN_Denver_DeIn

Location Information

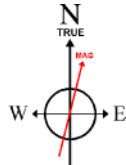
Facility Name				Grid East (US ft)	Grid North (US ft)	Latitude	Longitude
SEC.36-T06N-R67W				3185242.222	1404728.428	40°26'32.903"N	104°50'04.052"W
Slot	Local N (ft)	Local E (ft)	Grid East (US ft)	Grid North (US ft)	Latitude	Longitude	
SLOT#18 ORR STATE 23N-35C-M (2169'FSL & 234'FEL, SEC.36)	-102.01	299.46	3185542.424	1404628.676	40°26'31.895"N	104°50'03.179"W	
PRECISION 562 (25KB) (RKB) to Mud line (At Slot: SLOT#18 ORR STATE 23N-35C-M (2169'FSL & 234'FEL, SEC.36))						4749ft	
Mean Sea Level to Mud line (At Slot: SLOT#18 ORR STATE 23N-35C-M (2169'FSL & 234'FEL, SEC.36))						0ft	
PRECISION 562 (25KB) (RKB) to Mean Sea Level						4749ft	

Tie-On Position

MD (ft)	Inc (°)	Az (°)	TVD (ft)	Local N (ft)	Local E (ft)	Grid East (US ft)	Grid North (US ft)	Latitude	Longitude
25.00	0.000	128.553	25.00	0.00	0.00	3185542.42	1404628.68	40°26'31.895"N	104°50'00.179"W

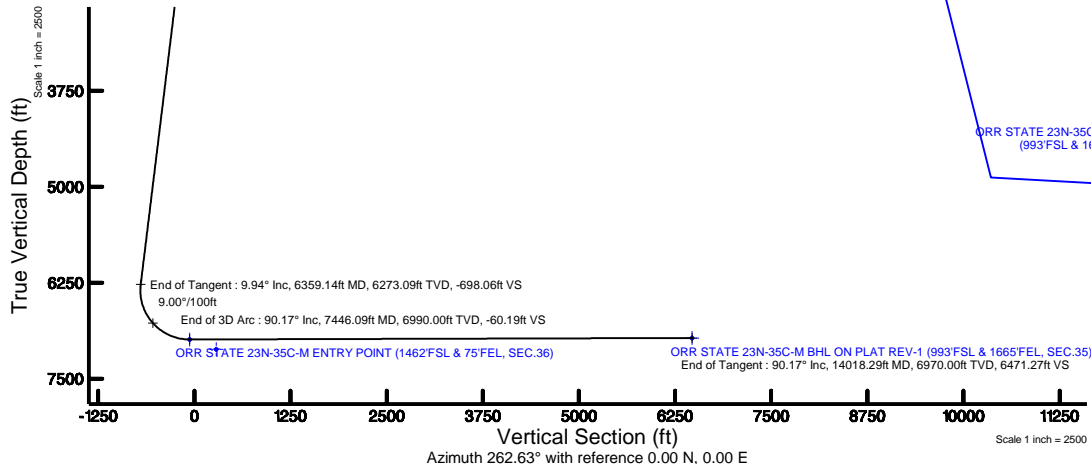
Wellpath Comments

MD (ft)	X (ft)	Y (ft)	TVD (ft)	Inclination (°)	Azimuth (°)	VS (ft)	Comment
6852.64	664.75	-679.25	6736.00	37.236	260.542	-572.12	SHARON SPRINGS
6901.84	633.89	-684.04	6774.00	41.596	261.764	-540.90	NIO-A
7094.59	487.36	-700.36	6897.00	58.756	265.106	-393.49	NIO-B



BGGM (1900.0 to 2018.0) Dip: 66.91° Field: 52526 nT
Magnetic North is 8.49 degrees East of True North (at 9/29/2016)

To correct azimuth from Magnetic to True add 8.49 degrees

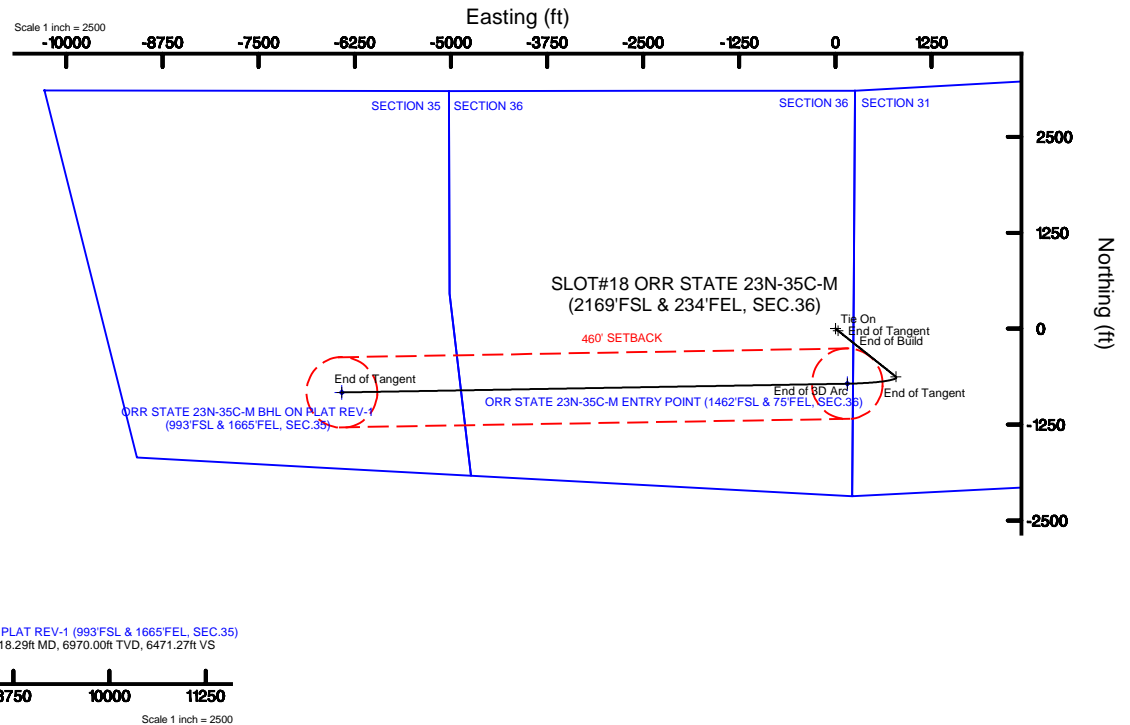


Well Profile Data

Design Comment	MD (ft)	Inc (°)	Az (°)	TVD (ft)	Local N (ft)	Local E (ft)	DLS (°/100ft)	VS (ft)
Tie On	25.00	0.000	128.553	25.00	0.00	0.00	0.00	0.00
End of Tangent	300.00	0.000	128.553	300.00	0.00	0.00	0.00	0.00
End of Build	797.21	9.944	128.553	794.72	-26.82	33.66	2.00	-29.94
End of Tangent	6359.14	9.944	128.553	6273.09	-625.43	784.78	0.00	-698.06
End of 3D Arc	7446.09	90.174	269.010	6990.00	-716.63	153.39	9.00	-60.19
End of Tangent	14018.29	90.174	269.010	6970.00	-830.19	-6417.79	0.00	6471.27

Targets

Name	MD (ft)	TVD (ft)	Local N (ft)	Local E (ft)	Grid East (US ft)	Grid North (US ft)	Latitude	Longitude
SEC.31-T06N-R66W		5.00	102.01	-299.45	3185242.22	1404728.43	40°26'32.903"N	104°50'04.052"W
SEC.31-T06N-R67W		5.00	102.01	-299.45	3185242.22	1404728.43	40°26'32.903"N	104°50'04.052"W
SEC.32-T06N-R66W		5.00	102.01	-299.45	3185242.22	1404728.43	40°26'32.903"N	104°50'04.052"W
SEC.32-T06N-R67W		5.00	102.01	-299.45	3185242.22	1404728.43	40°26'32.903"N	104°50'04.052"W
SEC.35-T06N-R67W		5.00	102.01	-299.45	3185242.22	1404728.43	40°26'32.903"N	104°50'04.052"W
SEC.36-T06N-R67W		5.00	102.01	-299.45	3185242.22	1404728.43	40°26'32.903"N	104°50'04.052"W
ORR STATE 23N-35C-M BHL ON PLAT REV-1 (993FSL & 1665FEL, SEC.35)	14018.29	6970.00	-830.19	-6417.79	3179131.31	1403750.30	40°26'32.683"N	104°51'23.180"W
ORR STATE 23N-35C-M ENTRY POINT (1462FSL & 75FEL, SEC.36)	7446.09	6990.00	-716.63	153.39	3185701.19	1403913.25	40°26'24.814"N	104°49'58.195"W
SEC.3121-T06N-R67W 460' SETBACK		7117.00	102.01	-299.45	3185242.22	1404728.43	40°26'32.903"N	104°50'04.052"W



To correct azimuth from Magnetic to True add 8.49 degrees

ORR_STATE_23N-35C-M_PWP__REV-A.0_.1as

~VERSION INFORMATION

VERS. 2.0 : CWLS LOG ASCII STANDARD-VERSION 2.0
 WRAP. NO : ASCII DATA SECTION CONTAINS ONE ROW PER WELLPATH STATION

~WELL INFORMATION

#MNEM	.UNITS	DATA	:DESCRIPTION
#----	.-----	----	:-----
STRT	.ft	0.00	:START MD
STOP	.ft	14018.29	:STOP MD
STEP	.ft	0.0	:STEP (non-uniform increment)
NULL	.	-999.99	:NULL
COMP	.	SYNERGY RESOURCES CORPORATION	:OPERATOR
WELL	.	ORR STATE 23N-35C-M	:WELL
FLD	.	WELD COUNTY (NAD83,TRUE NORTH)	:FIELD
LOC	.	COLORADO	:AREA (aka: Location)
CNTY	.	N/A	:COUNTY
STAT	.	N/A	:STATE
CTRY	.	N/A	:COUNTRY
SRVC	.	Baker Hughes	:CONTRACTOR
DATE	.	09/29/2016	:LOG REV DATE
API	.		:API NUMBER

~OTHER INFORMATION

#Software: WellArchitect(R) Version 5.0

#MNEM	.UNITS	DATA	:DESCRIPTION
#----	.-----	----	:-----
WPTYPE	.	PLANNED WELLPATH	:WELLPATH TYPE
FACILITY	.	SEC.36-T06N-R67W	:FACILITY
SLOT	.	SLOT#18 ORR STATE 23N-35C-M (2169'FSL & 234'FEL, SEC.36):SLOT	:SLOT
WELLBORE	.	ORR STATE 23N-35C-M PWB	:WELLBORE
WELLPATH	.	ORR STATE 23N-35C-M PWP (REV-A.0)	:WELLPATH
MDREFPT	.	PRECISION 562 (25'KB) (RKB)	:MD REFERENCE POINT
TVDREFPT	.	PRECISION 562 (25'KB) (RKB)	:TVD REFERENCE POINT
LCLREFPT	.	SLOT	:LOCAL COORDINATE REFERENCE PT
VSAZIMUTH	.deg	262.63	:VERTICAL SECTION AZIMUTH
VSORIGN	.ft	0.00	:VERTICAL SECTION ORIGIN NORTH
VSORIGE	.ft	0.00	:VERTICAL SECTION ORIGIN EAST

~CURVE (WELLPATH) INFORMATION

#MNEM	.UNITS	:DESCRIPTION
#----	.-----	:-----
DEPT	.ft	:MEASURED DEPTH
INC	.deg	:INCLINATION
AZI	.deg	:AZIMUTH
TVD	.ft	:TRUE VERTICAL DEPTH
SECT	.ft	:CROSS SECTION (CURTAIN/VERTICAL)
LOCALN	.ft	:LOCAL NORTH
LOCALE	.ft	:LOCAL EAST

ORR_STATE_23N-35C-M_PWP__REV-A.0_.1as

LAT .deg :LATITUDE
 LONG .deg :LONGITUDE
 DLS .deg/100ft :DOGLEG SEVERITY

~ASCII DATA

0.00	0.00	128.55	0.00	0.00	0.00	0.00	40.4421931	-104.8333831	0.00
25.00	0.00	128.55	25.00	0.00	0.00	0.00	40.4421931	-104.8333831	0.00
125.00	0.00	128.55	125.00	0.00	0.00	0.00	40.4421931	-104.8333831	0.00
225.00	0.00	128.55	225.00	0.00	0.00	0.00	40.4421931	-104.8333831	0.00
300.00	0.00	128.55	300.00	0.00	0.00	0.00	40.4421931	-104.8333831	0.00
325.00	0.50	128.55	325.00	-0.08	-0.07	0.09	40.4421929	-104.8333827	2.00
425.00	2.50	128.55	424.96	-1.90	-1.70	2.13	40.4421884	-104.8333754	2.00
525.00	4.50	128.55	524.77	-6.14	-5.50	6.91	40.4421779	-104.8333582	2.00
625.00	6.50	128.55	624.30	-12.81	-11.48	14.40	40.4421616	-104.8333313	2.00
725.00	8.50	128.55	723.44	-21.89	-19.61	24.61	40.4421392	-104.8332946	2.00
797.21	9.94	128.55	794.72	-29.94	-26.82	33.66	40.4421194	-104.8332621	2.00
825.00	9.94	128.55	822.09	-33.28	-29.81	37.41	40.4421112	-104.8332487	0.00
925.00	9.94	128.55	920.59	-45.29	-40.58	50.92	40.4420817	-104.8332001	0.00
1025.00	9.94	128.55	1019.09	-57.30	-51.34	64.42	40.4420521	-104.8331516	0.00
1125.00	9.94	128.55	1117.58	-69.31	-62.10	77.93	40.4420226	-104.8331031	0.00
1225.00	9.94	128.55	1216.08	-81.33	-72.87	91.43	40.4419930	-104.8330546	0.00
1325.00	9.94	128.55	1314.58	-93.34	-83.63	104.93	40.4419635	-104.8330061	0.00
1425.00	9.94	128.55	1413.08	-105.35	-94.39	118.44	40.4419340	-104.8329575	0.00
1525.00	9.94	128.55	1511.57	-117.36	-105.15	131.94	40.4419044	-104.8329090	0.00
1625.00	9.94	128.55	1610.07	-129.38	-115.92	145.45	40.4418749	-104.8328605	0.00
1725.00	9.94	128.55	1708.57	-141.39	-126.68	158.95	40.4418453	-104.8328120	0.00
1825.00	9.94	128.55	1807.07	-153.40	-137.44	172.46	40.4418158	-104.8327635	0.00
1925.00	9.94	128.55	1905.56	-165.41	-148.20	185.96	40.4417863	-104.8327150	0.00
2025.00	9.94	128.55	2004.06	-177.43	-158.97	199.47	40.4417567	-104.8326664	0.00
2125.00	9.94	128.55	2102.56	-189.44	-169.73	212.97	40.4417272	-104.8326179	0.00
2225.00	9.94	128.55	2201.06	-201.45	-180.49	226.48	40.4416976	-104.8325694	0.00
2325.00	9.94	128.55	2299.55	-213.46	-191.25	239.98	40.4416681	-104.8325209	0.00
2425.00	9.94	128.55	2398.05	-225.48	-202.02	253.49	40.4416385	-104.8324724	0.00
2525.00	9.94	128.55	2496.55	-237.49	-212.78	266.99	40.4416090	-104.8324239	0.00
2625.00	9.94	128.55	2595.05	-249.50	-223.54	280.50	40.4415795	-104.8323753	0.00
2725.00	9.94	128.55	2693.55	-261.51	-234.30	294.00	40.4415499	-104.8323268	0.00
2825.00	9.94	128.55	2792.04	-273.53	-245.07	307.51	40.4415204	-104.8322783	0.00
2925.00	9.94	128.55	2890.54	-285.54	-255.83	321.01	40.4414908	-104.8322298	0.00
3025.00	9.94	128.55	2989.04	-297.55	-266.59	334.52	40.4414613	-104.8321813	0.00
3125.00	9.94	128.55	3087.54	-309.56	-277.36	348.02	40.4414317	-104.8321328	0.00
3225.00	9.94	128.55	3186.03	-321.58	-288.12	361.53	40.4414022	-104.8320842	0.00
3325.00	9.94	128.55	3284.53	-333.59	-298.88	375.03	40.4413727	-104.8320357	0.00
3425.00	9.94	128.55	3383.03	-345.60	-309.64	388.53	40.4413431	-104.8319872	0.00
3525.00	9.94	128.55	3481.53	-357.61	-320.41	402.04	40.4413136	-104.8319387	0.00
3625.00	9.94	128.55	3580.02	-369.63	-331.17	415.54	40.4412840	-104.8318902	0.00
3725.00	9.94	128.55	3678.52	-381.64	-341.93	429.05	40.4412545	-104.8318417	0.00
3825.00	9.94	128.55	3777.02	-393.65	-352.69	442.55	40.4412249	-104.8317931	0.00
3925.00	9.94	128.55	3875.52	-405.66	-363.46	456.06	40.4411954	-104.8317446	0.00

ORR_STATE_23N-35C-M_PWP__REV-A.0_1as									
4025.00	9.94	128.55	3974.01	-417.68	-374.22	469.56	40.4411659	-104.8316961	0.00
4125.00	9.94	128.55	4072.51	-429.69	-384.98	483.07	40.4411363	-104.8316476	0.00
4225.00	9.94	128.55	4171.01	-441.70	-395.74	496.57	40.4411068	-104.8315991	0.00
4325.00	9.94	128.55	4269.51	-453.71	-406.51	510.08	40.4410772	-104.8315506	0.00
4425.00	9.94	128.55	4368.01	-465.73	-417.27	523.58	40.4410477	-104.8315021	0.00
4525.00	9.94	128.55	4466.50	-477.74	-428.03	537.09	40.4410181	-104.8314535	0.00
4625.00	9.94	128.55	4565.00	-489.75	-438.79	550.59	40.4409886	-104.8314050	0.00
4725.00	9.94	128.55	4663.50	-501.76	-449.56	564.10	40.4409591	-104.8313565	0.00
4825.00	9.94	128.55	4762.00	-513.78	-460.32	577.60	40.4409295	-104.8313080	0.00
4925.00	9.94	128.55	4860.49	-525.79	-471.08	591.11	40.4409000	-104.8312595	0.00
5025.00	9.94	128.55	4958.99	-537.80	-481.84	604.61	40.4408704	-104.8312110	0.00
5125.00	9.94	128.55	5057.49	-549.81	-492.61	618.12	40.4408409	-104.8311624	0.00
5225.00	9.94	128.55	5155.99	-561.83	-503.37	631.62	40.4408113	-104.8311139	0.00
5325.00	9.94	128.55	5254.48	-573.84	-514.13	645.13	40.4407818	-104.8310654	0.00
5425.00	9.94	128.55	5352.98	-585.85	-524.90	658.63	40.4407523	-104.8310169	0.00
5525.00	9.94	128.55	5451.48	-597.86	-535.66	672.13	40.4407227	-104.8309684	0.00
5625.00	9.94	128.55	5549.98	-609.87	-546.42	685.64	40.4406932	-104.8309199	0.00
5725.00	9.94	128.55	5648.47	-621.89	-557.18	699.14	40.4406636	-104.8308713	0.00
5825.00	9.94	128.55	5746.97	-633.90	-567.95	712.65	40.4406341	-104.8308228	0.00
5925.00	9.94	128.55	5845.47	-645.91	-578.71	726.15	40.4406045	-104.8307743	0.00
6025.00	9.94	128.55	5943.97	-657.92	-589.47	739.66	40.4405750	-104.8307258	0.00
6125.00	9.94	128.55	6042.47	-669.94	-600.23	753.16	40.4405455	-104.8306773	0.00
6225.00	9.94	128.55	6140.96	-681.95	-611.00	766.67	40.4405159	-104.8306288	0.00
6325.00	9.94	128.55	6239.46	-693.96	-621.76	780.17	40.4404864	-104.8305803	0.00
6359.14	9.94	128.55	6273.09	-698.06	-625.43	784.78	40.4404763	-104.8305637	0.00
6425.00	6.60	163.82	6338.29	-702.60	-632.62	790.29	40.4404566	-104.8305439	9.00
6525.00	9.66	228.00	6437.46	-696.56	-643.78	785.65	40.4404259	-104.8305606	9.00
6625.00	17.45	248.18	6534.65	-675.10	-654.99	765.45	40.4403952	-104.8306332	9.00
6725.00	26.02	255.77	6627.47	-638.73	-665.97	730.20	40.4403650	-104.8307598	9.00
6825.00	34.79	259.74	6713.64	-588.36	-676.47	680.77	40.4403362	-104.8309374	9.00
6925.00	43.65	262.27	6791.04	-525.22	-686.21	618.36	40.4403095	-104.8311616	9.00
7025.00	52.55	264.08	6857.76	-450.87	-694.96	544.53	40.4402854	-104.8314268	9.00
7125.00	61.47	265.51	6912.15	-367.15	-702.51	461.08	40.4402647	-104.8317266	9.00
7225.00	70.40	266.71	6952.89	-276.10	-708.66	370.07	40.4402479	-104.8320536	9.00
7325.00	79.34	267.79	6978.96	-179.98	-713.27	273.75	40.4402352	-104.8323996	9.00
7425.00	88.29	268.80	6989.72	-81.15	-716.22	174.48	40.4402271	-104.8327562	9.00
7446.09	90.17	269.01	6990.00	-60.19	-716.63	153.39	40.4402260	-104.8328320	9.00
7525.00	90.17	269.01	6989.76	18.23	-717.99	74.49	40.4402223	-104.8331154	0.00
7625.00	90.17	269.01	6989.46	117.61	-719.72	-25.49	40.4402175	-104.8334746	0.00
7725.00	90.17	269.01	6989.15	216.99	-721.45	-125.47	40.4402128	-104.8338338	0.00
7825.00	90.17	269.01	6988.85	316.37	-723.17	-225.46	40.4402080	-104.8341930	0.00
7925.00	90.17	269.01	6988.54	415.75	-724.90	-325.44	40.4402033	-104.8345522	0.00
8025.00	90.17	269.01	6988.24	515.13	-726.63	-425.43	40.4401985	-104.8349114	0.00
8125.00	90.17	269.01	6987.93	614.51	-728.36	-525.41	40.4401938	-104.8352706	0.00
8225.00	90.17	269.01	6987.63	713.89	-730.09	-625.40	40.4401890	-104.8356298	0.00
8325.00	90.17	269.01	6987.33	813.27	-731.81	-725.38	40.4401843	-104.8359890	0.00
8425.00	90.17	269.01	6987.02	912.65	-733.54	-825.37	40.4401795	-104.8363482	0.00
8525.00	90.17	269.01	6986.72	1012.03	-735.27	-925.35	40.4401748	-104.8367074	0.00

ORR_STATE_23N-35C-M_PWP__REV-A.0_1as									
8625.00	90.17	269.01	6986.41	1111.41	-737.00	-1025.34	40.4401700	-104.8370666	0.00
8725.00	90.17	269.01	6986.11	1210.79	-738.72	-1125.32	40.4401653	-104.8374258	0.00
8825.00	90.17	269.01	6985.80	1310.17	-740.45	-1225.31	40.4401605	-104.8377850	0.00
8925.00	90.17	269.01	6985.50	1409.55	-742.18	-1325.29	40.4401558	-104.8381442	0.00
9025.00	90.17	269.01	6985.20	1508.93	-743.91	-1425.27	40.4401510	-104.8385034	0.00
9125.00	90.17	269.01	6984.89	1608.31	-745.64	-1525.26	40.4401462	-104.8388626	0.00
9225.00	90.17	269.01	6984.59	1707.69	-747.36	-1625.24	40.4401415	-104.8392218	0.00
9325.00	90.17	269.01	6984.28	1807.07	-749.09	-1725.23	40.4401367	-104.8395810	0.00
9425.00	90.17	269.01	6983.98	1906.45	-750.82	-1825.21	40.4401320	-104.8399402	0.00
9525.00	90.17	269.01	6983.67	2005.83	-752.55	-1925.20	40.4401272	-104.8402994	0.00
9625.00	90.17	269.01	6983.37	2105.21	-754.28	-2025.18	40.4401224	-104.8406586	0.00
9725.00	90.17	269.01	6983.07	2204.59	-756.00	-2125.17	40.4401177	-104.8410177	0.00
9825.00	90.17	269.01	6982.76	2303.97	-757.73	-2225.15	40.4401129	-104.8413769	0.00
9925.00	90.17	269.01	6982.46	2403.35	-759.46	-2325.14	40.4401081	-104.8417361	0.00
10025.00	90.17	269.01	6982.15	2502.73	-761.19	-2425.12	40.4401034	-104.8420953	0.00
10125.00	90.17	269.01	6981.85	2602.11	-762.92	-2525.11	40.4400986	-104.8424545	0.00
10225.00	90.17	269.01	6981.54	2701.49	-764.64	-2625.09	40.4400938	-104.8428137	0.00
10325.00	90.17	269.01	6981.24	2800.87	-766.37	-2725.07	40.4400890	-104.8431729	0.00
10425.00	90.17	269.01	6980.93	2900.25	-768.10	-2825.06	40.4400843	-104.8435321	0.00
10525.00	90.17	269.01	6980.63	2999.63	-769.83	-2925.04	40.4400795	-104.8438913	0.00
10625.00	90.17	269.01	6980.33	3099.01	-771.56	-3025.03	40.4400747	-104.8442505	0.00
10725.00	90.17	269.01	6980.02	3198.39	-773.28	-3125.01	40.4400699	-104.8446097	0.00
10825.00	90.17	269.01	6979.72	3297.77	-775.01	-3225.00	40.4400652	-104.8449689	0.00
10925.00	90.17	269.01	6979.41	3397.15	-776.74	-3324.98	40.4400604	-104.8453281	0.00
11025.00	90.17	269.01	6979.11	3496.53	-778.47	-3424.97	40.4400556	-104.8456873	0.00
11125.00	90.17	269.01	6978.80	3595.91	-780.19	-3524.95	40.4400508	-104.8460465	0.00
11225.00	90.17	269.01	6978.50	3695.29	-781.92	-3624.94	40.4400460	-104.8464057	0.00
11325.00	90.17	269.01	6978.20	3794.67	-783.65	-3724.92	40.4400413	-104.8467649	0.00
11425.00	90.17	269.01	6977.89	3894.05	-785.38	-3824.91	40.4400365	-104.8471241	0.00
11525.00	90.17	269.01	6977.59	3993.43	-787.11	-3924.89	40.4400317	-104.8474833	0.00
11625.00	90.17	269.01	6977.28	4092.81	-788.83	-4024.87	40.4400269	-104.8478425	0.00
11725.00	90.17	269.01	6976.98	4192.19	-790.56	-4124.86	40.4400221	-104.8482017	0.00
11825.00	90.17	269.01	6976.67	4291.57	-792.29	-4224.84	40.4400173	-104.8485608	0.00
11925.00	90.17	269.01	6976.37	4390.95	-794.02	-4324.83	40.4400125	-104.8489200	0.00
12025.00	90.17	269.01	6976.07	4490.33	-795.75	-4424.81	40.4400077	-104.8492792	0.00
12125.00	90.17	269.01	6975.76	4589.72	-797.47	-4524.80	40.4400029	-104.8496384	0.00
12225.00	90.17	269.01	6975.46	4689.10	-799.20	-4624.78	40.4399982	-104.8499976	0.00
12325.00	90.17	269.01	6975.15	4788.48	-800.93	-4724.77	40.4399934	-104.8503568	0.00
12425.00	90.17	269.01	6974.85	4887.86	-802.66	-4824.75	40.4399886	-104.8507160	0.00
12525.00	90.17	269.01	6974.54	4987.24	-804.39	-4924.74	40.4399838	-104.8510752	0.00
12625.00	90.17	269.01	6974.24	5086.62	-806.11	-5024.72	40.4399790	-104.8514344	0.00
12725.00	90.17	269.01	6973.94	5186.00	-807.84	-5124.70	40.4399742	-104.8517936	0.00
12825.00	90.17	269.01	6973.63	5285.38	-809.57	-5224.69	40.4399694	-104.8521528	0.00
12925.00	90.17	269.01	6973.33	5384.76	-811.30	-5324.67	40.4399646	-104.8525120	0.00
13025.00	90.17	269.01	6973.02	5484.14	-813.02	-5424.66	40.4399598	-104.8528712	0.00
13125.00	90.17	269.01	6972.72	5583.52	-814.75	-5524.64	40.4399550	-104.8532304	0.00
13225.00	90.17	269.01	6972.41	5682.90	-816.48	-5624.63	40.4399502	-104.8535896	0.00
13325.00	90.17	269.01	6972.11	5782.28	-818.21	-5724.61	40.4399453	-104.8539488	0.00

				ORR_STATE_23N-35C-M_PWP__REV-A.0_.las						
13425.00	90.17	269.01	6971.81	5881.66	-819.94	-5824.60	40.4399405	-104.8543080	0.00	
13525.00	90.17	269.01	6971.50	5981.04	-821.66	-5924.58	40.4399357	-104.8546671	0.00	
13625.00	90.17	269.01	6971.20	6080.42	-823.39	-6024.57	40.4399309	-104.8550263	0.00	
13725.00	90.17	269.01	6970.89	6179.80	-825.12	-6124.55	40.4399261	-104.8553855	0.00	
13825.00	90.17	269.01	6970.59	6279.18	-826.85	-6224.54	40.4399213	-104.8557447	0.00	
13925.00	90.17	269.01	6970.28	6378.56	-828.58	-6324.52	40.4399165	-104.8561039	0.00	
14018.29	90.17	269.01	6970.00	6471.27	-830.19	-6417.79	40.4399120	-104.8564390	0.00	



Planned Wellpath Report

ORR STATE 23N-35C-M PWP (REV-A.0)

Page 1 of 8



REFERENCE WELLPATH IDENTIFICATION

Operator	SYNERGY RESOURCES CORPORATION	Slot	SLOT#18 ORR STATE 23N-35C-M (2169'FSL & 234'FEL, SEC.36)
Area	COLORADO	Well	ORR STATE 23N-35C-M
Field	WELD COUNTY (NAD83,TRUE NORTH)	Wellbore	ORR STATE 23N-35C-M PWB
Facility	SEC.36-T06N-R67W		

REPORT SETUP INFORMATION

Projection System	NAD83 / Lambert Colorado SP, Northern Zone (501), US feet	Software System	WellArchitect® 5.0
North Reference	True	User	Wagnjam
Scale	0.999962	Report Generated	10/14/2016 at 1:05:06 AM
Convergence at slot	0.44° East	Database/Source file	WA_DEN_Denver_Defn/ORR_STATE_23N-35C-M_PWP_REV-A.0_.xml

WELLPATH LOCATION

	Local coordinates		Grid coordinates		Geographic coordinates	
	North[ft]	East[ft]	Easting[US ft]	Northing[US ft]	Latitude	Longitude
Slot Location	-102.01	299.46	3185542.42	1404628.68	40°26'31.895"N	104°50'00.179"W
Facility Reference Pt			3185242.22	1404728.43	40°26'32.903"N	104°50'04.052"W
Field Reference Pt			3171284.48	1426358.81	40°30'07.643"N	104°53'02.634"W

WELLPATH DATUM

Calculation method	Minimum curvature	PRECISION 562 (25'KB) (RKB) to Facility Vertical Datum	4749.00ft
Horizontal Reference Pt	Slot	PRECISION 562 (25'KB) (RKB) to Mean Sea Level	4749.00ft
Vertical Reference Pt	PRECISION 562 (25'KB) (RKB)	PRECISION 562 (25'KB) (RKB) to Mud Line at Slot (SLOT#18 ORR STATE 23N-35C-M (2169'FSL & 234'FEL, SEC.36))	4749.00ft
MD Reference Pt	PRECISION 562 (25'KB) (RKB)	Section Origin	N 0.00, E 0.00 ft
Field Vertical Reference	Mean Sea Level	Section Azimuth	262.63°



Planned Wellpath Report

ORR STATE 23N-35C-M PWP (REV-A.0)

Page 2 of 8



REFERENCE WELLPATH IDENTIFICATION

Operator	SYNERGY RESOURCES CORPORATION	Slot	SLOT#18 ORR STATE 23N-35C-M (2169'FSL & 234'FEL, SEC.36)
Area	COLORADO	Well	ORR STATE 23N-35C-M
Field	WELD COUNTY (NAD83,TRUE NORTH)	Wellbore	ORR STATE 23N-35C-M PWB
Facility	SEC.36-T06N-R67W		

WELLPATH DATA (149 stations) † = interpolated/extrapolated station

MD [ft]	Inclination [°]	Azimuth [°]	TVD [ft]	Vert Sect [ft]	North [ft]	East [ft]	DLS [°/100ft]	Comments
0.00†	0.000	128.553	0.00	0.00	0.00	0.00	0.00	
25.00	0.000	128.553	25.00	0.00	0.00	0.00	0.00	Tie On
125.00†	0.000	128.553	125.00	0.00	0.00	0.00	0.00	
225.00†	0.000	128.553	225.00	0.00	0.00	0.00	0.00	
300.00	0.000	128.553	300.00	0.00	0.00	0.00	0.00	End of Tangent
325.00†	0.500	128.553	325.00	-0.08	-0.07	0.09	2.00	
425.00†	2.500	128.553	424.96	-1.90	-1.70	2.13	2.00	
525.00†	4.500	128.553	524.77	-6.14	-5.50	6.91	2.00	
625.00†	6.500	128.553	624.30	-12.81	-11.48	14.40	2.00	
725.00†	8.500	128.553	723.44	-21.89	-19.61	24.61	2.00	
797.21	9.944	128.553	794.72	-29.94	-26.82	33.66	2.00	End of Build
825.00†	9.944	128.553	822.09	-33.28	-29.81	37.41	0.00	
925.00†	9.944	128.553	920.59	-45.29	-40.58	50.92	0.00	
1025.00†	9.944	128.553	1019.09	-57.30	-51.34	64.42	0.00	
1125.00†	9.944	128.553	1117.58	-69.31	-62.10	77.93	0.00	
1225.00†	9.944	128.553	1216.08	-81.33	-72.87	91.43	0.00	
1325.00†	9.944	128.553	1314.58	-93.34	-83.63	104.93	0.00	
1425.00†	9.944	128.553	1413.08	-105.35	-94.39	118.44	0.00	
1525.00†	9.944	128.553	1511.57	-117.36	-105.15	131.94	0.00	
1625.00†	9.944	128.553	1610.07	-129.38	-115.92	145.45	0.00	
1725.00†	9.944	128.553	1708.57	-141.39	-126.68	158.95	0.00	
1825.00†	9.944	128.553	1807.07	-153.40	-137.44	172.46	0.00	
1925.00†	9.944	128.553	1905.56	-165.41	-148.20	185.96	0.00	
2025.00†	9.944	128.553	2004.06	-177.43	-158.97	199.47	0.00	
2125.00†	9.944	128.553	2102.56	-189.44	-169.73	212.97	0.00	
2225.00†	9.944	128.553	2201.06	-201.45	-180.49	226.48	0.00	
2325.00†	9.944	128.553	2299.55	-213.46	-191.25	239.98	0.00	
2425.00†	9.944	128.553	2398.05	-225.48	-202.02	253.49	0.00	
2525.00†	9.944	128.553	2496.55	-237.49	-212.78	266.99	0.00	
2625.00†	9.944	128.553	2595.05	-249.50	-223.54	280.50	0.00	



Planned Wellpath Report

ORR STATE 23N-35C-M PWP (REV-A.0)

Page 3 of 8



REFERENCE WELLPATH IDENTIFICATION

Operator	SYNERGY RESOURCES CORPORATION	Slot	SLOT#18 ORR STATE 23N-35C-M (2169'FSL & 234'FEL, SEC.36)
Area	COLORADO	Well	ORR STATE 23N-35C-M
Field	WELD COUNTY (NAD83,TRUE NORTH)	Wellbore	ORR STATE 23N-35C-M PWB
Facility	SEC.36-T06N-R67W		

WELLPATH DATA (149 stations) † = interpolated/extrapolated station

MD [ft]	Inclination [°]	Azimuth [°]	TVD [ft]	Vert Sect [ft]	North [ft]	East [ft]	DLS [°/100ft]	Comments
2725.00†	9.944	128.553	2693.55	-261.51	-234.30	294.00	0.00	
2825.00†	9.944	128.553	2792.04	-273.53	-245.07	307.51	0.00	
2925.00†	9.944	128.553	2890.54	-285.54	-255.83	321.01	0.00	
3025.00†	9.944	128.553	2989.04	-297.55	-266.59	334.52	0.00	
3125.00†	9.944	128.553	3087.54	-309.56	-277.36	348.02	0.00	
3225.00†	9.944	128.553	3186.03	-321.58	-288.12	361.53	0.00	
3325.00†	9.944	128.553	3284.53	-333.59	-298.88	375.03	0.00	
3425.00†	9.944	128.553	3383.03	-345.60	-309.64	388.53	0.00	
3525.00†	9.944	128.553	3481.53	-357.61	-320.41	402.04	0.00	
3625.00†	9.944	128.553	3580.02	-369.63	-331.17	415.54	0.00	
3725.00†	9.944	128.553	3678.52	-381.64	-341.93	429.05	0.00	
3825.00†	9.944	128.553	3777.02	-393.65	-352.69	442.55	0.00	
3925.00†	9.944	128.553	3875.52	-405.66	-363.46	456.06	0.00	
4025.00†	9.944	128.553	3974.01	-417.68	-374.22	469.56	0.00	
4125.00†	9.944	128.553	4072.51	-429.69	-384.98	483.07	0.00	
4225.00†	9.944	128.553	4171.01	-441.70	-395.74	496.57	0.00	
4325.00†	9.944	128.553	4269.51	-453.71	-406.51	510.08	0.00	
4425.00†	9.944	128.553	4368.01	-465.73	-417.27	523.58	0.00	
4525.00†	9.944	128.553	4466.50	-477.74	-428.03	537.09	0.00	
4625.00†	9.944	128.553	4565.00	-489.75	-438.79	550.59	0.00	
4725.00†	9.944	128.553	4663.50	-501.76	-449.56	564.10	0.00	
4825.00†	9.944	128.553	4762.00	-513.78	-460.32	577.60	0.00	
4925.00†	9.944	128.553	4860.49	-525.79	-471.08	591.11	0.00	
5025.00†	9.944	128.553	4958.99	-537.80	-481.84	604.61	0.00	
5125.00†	9.944	128.553	5057.49	-549.81	-492.61	618.12	0.00	
5225.00†	9.944	128.553	5155.99	-561.83	-503.37	631.62	0.00	
5325.00†	9.944	128.553	5254.48	-573.84	-514.13	645.13	0.00	
5425.00†	9.944	128.553	5352.98	-585.85	-524.90	658.63	0.00	
5525.00†	9.944	128.553	5451.48	-597.86	-535.66	672.13	0.00	
5625.00†	9.944	128.553	5549.98	-609.87	-546.42	685.64	0.00	



Planned Wellpath Report

ORR STATE 23N-35C-M PWP (REV-A.0)

Page 4 of 8



REFERENCE WELLPATH IDENTIFICATION			
Operator	SYNERGY RESOURCES CORPORATION	Slot	SLOT#18 ORR STATE 23N-35C-M (2169'FSL & 234'FEL, SEC.36)
Area	COLORADO	Well	ORR STATE 23N-35C-M
Field	WELD COUNTY (NAD83,TRUE NORTH)	Wellbore	ORR STATE 23N-35C-M PWB
Facility	SEC.36-T06N-R67W		

WELLPATH DATA (149 stations) † = interpolated/extrapolated station								
MD [ft]	Inclination [°]	Azimuth [°]	TVD [ft]	Vert Sect [ft]	North [ft]	East [ft]	DLS [°/100ft]	Comments
5725.00†	9.944	128.553	5648.47	-621.89	-557.18	699.14	0.00	
5825.00†	9.944	128.553	5746.97	-633.90	-567.95	712.65	0.00	
5925.00†	9.944	128.553	5845.47	-645.91	-578.71	726.15	0.00	
6025.00†	9.944	128.553	5943.97	-657.92	-589.47	739.66	0.00	
6125.00†	9.944	128.553	6042.47	-669.94	-600.23	753.16	0.00	
6225.00†	9.944	128.553	6140.96	-681.95	-611.00	766.67	0.00	
6325.00†	9.944	128.553	6239.46	-693.96	-621.76	780.17	0.00	
6359.14	9.944	128.553	6273.09	-698.06	-625.43	784.78	0.00	End of Tangent
6425.00†	6.600	163.825	6338.29	-702.60	-632.62	790.29	9.00	
6525.00†	9.661	227.998	6437.46	-696.56	-643.78	785.65	9.00	
6625.00†	17.448	248.180	6534.65	-675.10	-654.99	765.45	9.00	
6725.00†	26.016	255.765	6627.47	-638.73	-665.97	730.20	9.00	
6825.00†	34.793	259.742	6713.64	-588.36	-676.47	680.77	9.00	
6852.64†	37.236	260.542	6736.00	-572.12	-679.25	664.75	9.00	SHARON SPRINGS
6901.84†	41.596	261.764	6774.00	-540.90	-684.04	633.89	9.00	NIO-A
6925.00†	43.652	262.269	6791.04	-525.22	-686.21	618.36	9.00	
7025.00†	52.550	264.084	6857.76	-450.87	-694.96	544.53	9.00	
7094.59†	58.756	265.106	6897.00	-393.49	-700.36	487.36	9.00	NIO-B
7125.00†	61.471	265.510	6912.15	-367.15	-702.51	461.08	9.00	
7225.00†	70.404	266.712	6952.89	-276.10	-708.66	370.07	9.00	
7325.00†	79.344	267.787	6978.96	-179.98	-713.27	273.75	9.00	
7425.00†	88.288	268.799	6989.72	-81.15	-716.22	174.48	9.00	
7446.09	90.174	269.010	6990.00 [†]	-60.19	-716.63	153.39	9.00	End of 3D Arc
7525.00†	90.174	269.010	6989.76	18.23	-717.99	74.49	0.00	
7625.00†	90.174	269.010	6989.46	117.61	-719.72	-25.49	0.00	
7725.00†	90.174	269.010	6989.15	216.99	-721.45	-125.47	0.00	
7825.00†	90.174	269.010	6988.85	316.37	-723.17	-225.46	0.00	
7925.00†	90.174	269.010	6988.54	415.75	-724.90	-325.44	0.00	
8025.00†	90.174	269.010	6988.24	515.13	-726.63	-425.43	0.00	
8125.00†	90.174	269.010	6987.93	614.51	-728.36	-525.41	0.00	



Planned Wellpath Report

ORR STATE 23N-35C-M PWP (REV-A.0)

Page 5 of 8



REFERENCE WELLPATH IDENTIFICATION

Operator	SYNERGY RESOURCES CORPORATION	Slot	SLOT#18 ORR STATE 23N-35C-M (2169'FSL & 234'FEL, SEC.36)
Area	COLORADO	Well	ORR STATE 23N-35C-M
Field	WELD COUNTY (NAD83,TRUE NORTH)	Wellbore	ORR STATE 23N-35C-M PWB
Facility	SEC.36-T06N-R67W		

WELLPATH DATA (149 stations) † = interpolated/extrapolated station

MD [ft]	Inclination [°]	Azimuth [°]	TVD [ft]	Vert Sect [ft]	North [ft]	East [ft]	DLS [°/100ft]	Comments
8225.00†	90.174	269.010	6987.63	713.89	-730.09	-625.40	0.00	
8325.00†	90.174	269.010	6987.33	813.27	-731.81	-725.38	0.00	
8425.00†	90.174	269.010	6987.02	912.65	-733.54	-825.37	0.00	
8525.00†	90.174	269.010	6986.72	1012.03	-735.27	-925.35	0.00	
8625.00†	90.174	269.010	6986.41	1111.41	-737.00	-1025.34	0.00	
8725.00†	90.174	269.010	6986.11	1210.79	-738.72	-1125.32	0.00	
8825.00†	90.174	269.010	6985.80	1310.17	-740.45	-1225.31	0.00	
8925.00†	90.174	269.010	6985.50	1409.55	-742.18	-1325.29	0.00	
9025.00†	90.174	269.010	6985.20	1508.93	-743.91	-1425.27	0.00	
9125.00†	90.174	269.010	6984.89	1608.31	-745.64	-1525.26	0.00	
9225.00†	90.174	269.010	6984.59	1707.69	-747.36	-1625.24	0.00	
9325.00†	90.174	269.010	6984.28	1807.07	-749.09	-1725.23	0.00	
9425.00†	90.174	269.010	6983.98	1906.45	-750.82	-1825.21	0.00	
9525.00†	90.174	269.010	6983.67	2005.83	-752.55	-1925.20	0.00	
9625.00†	90.174	269.010	6983.37	2105.21	-754.28	-2025.18	0.00	
9725.00†	90.174	269.010	6983.07	2204.59	-756.00	-2125.17	0.00	
9825.00†	90.174	269.010	6982.76	2303.97	-757.73	-2225.15	0.00	
9925.00†	90.174	269.010	6982.46	2403.35	-759.46	-2325.14	0.00	
10025.00†	90.174	269.010	6982.15	2502.73	-761.19	-2425.12	0.00	
10125.00†	90.174	269.010	6981.85	2602.11	-762.92	-2525.11	0.00	
10225.00†	90.174	269.010	6981.54	2701.49	-764.64	-2625.09	0.00	
10325.00†	90.174	269.010	6981.24	2800.87	-766.37	-2725.07	0.00	
10425.00†	90.174	269.010	6980.93	2900.25	-768.10	-2825.06	0.00	
10525.00†	90.174	269.010	6980.63	2999.63	-769.83	-2925.04	0.00	
10625.00†	90.174	269.010	6980.33	3099.01	-771.56	-3025.03	0.00	
10725.00†	90.174	269.010	6980.02	3198.39	-773.28	-3125.01	0.00	
10825.00†	90.174	269.010	6979.72	3297.77	-775.01	-3225.00	0.00	
10925.00†	90.174	269.010	6979.41	3397.15	-776.74	-3324.98	0.00	
11025.00†	90.174	269.010	6979.11	3496.53	-778.47	-3424.97	0.00	
11125.00†	90.174	269.010	6978.80	3595.91	-780.19	-3524.95	0.00	



Planned Wellpath Report

ORR STATE 23N-35C-M PWP (REV-A.0)

Page 6 of 8



REFERENCE WELLPATH IDENTIFICATION

Operator	SYNERGY RESOURCES CORPORATION	Slot	SLOT#18 ORR STATE 23N-35C-M (2169'FSL & 234'FEL, SEC.36)
Area	COLORADO	Well	ORR STATE 23N-35C-M
Field	WELD COUNTY (NAD83,TRUE NORTH)	Wellbore	ORR STATE 23N-35C-M PWB
Facility	SEC.36-T06N-R67W		

WELLPATH DATA (149 stations) † = interpolated/extrapolated station

MD [ft]	Inclination [°]	Azimuth [°]	TVD [ft]	Vert Sect [ft]	North [ft]	East [ft]	DLS [°/100ft]	Comments
11225.00†	90.174	269.010	6978.50	3695.29	-781.92	-3624.94	0.00	
11325.00†	90.174	269.010	6978.20	3794.67	-783.65	-3724.92	0.00	
11425.00†	90.174	269.010	6977.89	3894.05	-785.38	-3824.91	0.00	
11525.00†	90.174	269.010	6977.59	3993.43	-787.11	-3924.89	0.00	
11625.00†	90.174	269.010	6977.28	4092.81	-788.83	-4024.87	0.00	
11725.00†	90.174	269.010	6976.98	4192.19	-790.56	-4124.86	0.00	
11825.00†	90.174	269.010	6976.67	4291.57	-792.29	-4224.84	0.00	
11925.00†	90.174	269.010	6976.37	4390.95	-794.02	-4324.83	0.00	
12025.00†	90.174	269.010	6976.07	4490.33	-795.75	-4424.81	0.00	
12125.00†	90.174	269.010	6975.76	4589.72	-797.47	-4524.80	0.00	
12225.00†	90.174	269.010	6975.46	4689.10	-799.20	-4624.78	0.00	
12325.00†	90.174	269.010	6975.15	4788.48	-800.93	-4724.77	0.00	
12425.00†	90.174	269.010	6974.85	4887.86	-802.66	-4824.75	0.00	
12525.00†	90.174	269.010	6974.54	4987.24	-804.39	-4924.74	0.00	
12625.00†	90.174	269.010	6974.24	5086.62	-806.11	-5024.72	0.00	
12725.00†	90.174	269.010	6973.94	5186.00	-807.84	-5124.70	0.00	
12825.00†	90.174	269.010	6973.63	5285.38	-809.57	-5224.69	0.00	
12925.00†	90.174	269.010	6973.33	5384.76	-811.30	-5324.67	0.00	
13025.00†	90.174	269.010	6973.02	5484.14	-813.02	-5424.66	0.00	
13125.00†	90.174	269.010	6972.72	5583.52	-814.75	-5524.64	0.00	
13225.00†	90.174	269.010	6972.41	5682.90	-816.48	-5624.63	0.00	
13325.00†	90.174	269.010	6972.11	5782.28	-818.21	-5724.61	0.00	
13425.00†	90.174	269.010	6971.81	5881.66	-819.94	-5824.60	0.00	
13525.00†	90.174	269.010	6971.50	5981.04	-821.66	-5924.58	0.00	
13625.00†	90.174	269.010	6971.20	6080.42	-823.39	-6024.57	0.00	
13725.00†	90.174	269.010	6970.89	6179.80	-825.12	-6124.55	0.00	
13825.00†	90.174	269.010	6970.59	6279.18	-826.85	-6224.54	0.00	
13925.00†	90.174	269.010	6970.28	6378.56	-828.58	-6324.52	0.00	
14018.29	90.174	269.010	6970.00 ²	6471.27	-830.19	-6417.79	0.00	End of Tangent

HOLE & CASING SECTIONS

- Ref Wellbore: ORR STATE 23N-35C-M PWB

Ref Wellpath: ORR STATE 23N-35C-M PWP (REV-A.0)

String/Diameter	Start MD [ft]	End MD [ft]	Interval [ft]	Start TVD [ft]	End TVD [ft]	Start N/S [ft]	Start E/W [ft]	End N/S [ft]	End E/W [ft]
13.5in Open Hole	25.00	1800.00	1775.00	25.00	1782.44	0.00	0.00	-134.75	169.08
8.5in Open Hole	1800.00	14100.00	12300.00	1782.44	N/A	-134.75	169.08	N/A	N/A

TARGETS

Name	MD [ft]	TVD [ft]	North [ft]	East [ft]	Grid East [US ft]	Grid North [US ft]	Latitude	Longitude	Shape
SEC.31-T06N-R66W		5.00	102.01	-299.45	3185242.22	1404728.43	40°26'32.903"N	104°50'04.052"W	polygon
SEC.31-T06N-R67W		5.00	102.01	-299.45	3185242.22	1404728.43	40°26'32.903"N	104°50'04.052"W	point
SEC.32-T06N-R66W		5.00	102.01	-299.45	3185242.22	1404728.43	40°26'32.903"N	104°50'04.052"W	polygon

TARGETS									
Name	MD [ft]	TVD [ft]	North [ft]	East [ft]	Grid East [US ft]	Grid North [US ft]	Latitude	Longitude	Shape
SEC.32-T06N-R67W		5.00	102.01	-299.45	3185242.22	1404728.43	40°26'32.903"N	104°50'04.052"W	point
SEC.35-T06N-R67W		5.00	102.01	-299.45	3185242.22	1404728.43	40°26'32.903"N	104°50'04.052"W	polygon
SEC.36-T06N-R67W		5.00	102.01	-299.45	3185242.22	1404728.43	40°26'32.903"N	104°50'04.052"W	polygon
2) ORR STATE 23N-35C-M BHL ON PLAT REV-1 (993'FSL & 1665'FEL, SEC.35)	14018.29	6970.00	-830.19	-6417.79	3179131.31	1403750.30	40°26'23.683"N	104°51'23.180"W	circle
1) ORR STATE 23N-35C-M ENTRY POINT (1462'FSL & 75'FEL, SEC.36)	7446.09	6990.00	-716.63	153.39	3185701.19	1403913.25	40°26'24.814"N	104°49'58.195"W	circle
SEC.31/21-T06N-R67W 460' SETBACK		7117.00	102.01	-299.45	3185242.22	1404728.43	40°26'32.903"N	104°50'04.052"W	point



Planned Wellpath Report

ORR STATE 23N-35C-M PWP (REV-A.0)
Page 7 of 8



REFERENCE WELLPATH IDENTIFICATION			
Operator	SYNERGY RESOURCES CORPORATION	Slot	SLOT#18 ORR STATE 23N-35C-M (2169'FSL & 234'FEL, SEC.36)
Area	COLORADO	Well	ORR STATE 23N-35C-M
Field	WELD COUNTY (NAD83,TRUE NORTH)	Wellbore	ORR STATE 23N-35C-M PWB
Facility	SEC.36-T06N-R67W		

SURVEY PROGRAM -				
Ref Wellbore: ORR STATE 23N-35C-M PWB		Ref Wellpath: ORR STATE 23N-35C-M PWP (REV-A.0)		
Start MD [ft]	End MD [ft]	Positional Uncertainty Model	Log Name/Comment	Wellbore
25.00	14018.29	BHI NaviTrak (Standard)		ORR STATE 23N-35C-M PWB



Planned Wellpath Report

ORR STATE 23N-35C-M PWP (REV-A.0)
Page 8 of 8



REFERENCE WELLPATH IDENTIFICATION			
Operator	SYNERGY RESOURCES CORPORATION	Slot	SLOT#18 ORR STATE 23N-35C-M (2169'FSL & 234'FEL, SEC.36)
Area	COLORADO	Well	ORR STATE 23N-35C-M
Field	WELD COUNTY (NAD83,TRUE NORTH)	Wellbore	ORR STATE 23N-35C-M PWB
Facility	SEC.36-T06N-R67W		

WELLPATH COMMENTS				
MD [ft]	Inclination [°]	Azimuth [°]	TVD [ft]	Comment
6852.64	37.236	260.542	6736.00	SHARON SPRINGS
6901.84	41.596	261.764	6774.00	NIO-A
7094.59	58.756	265.106	6897.00	NIO-B