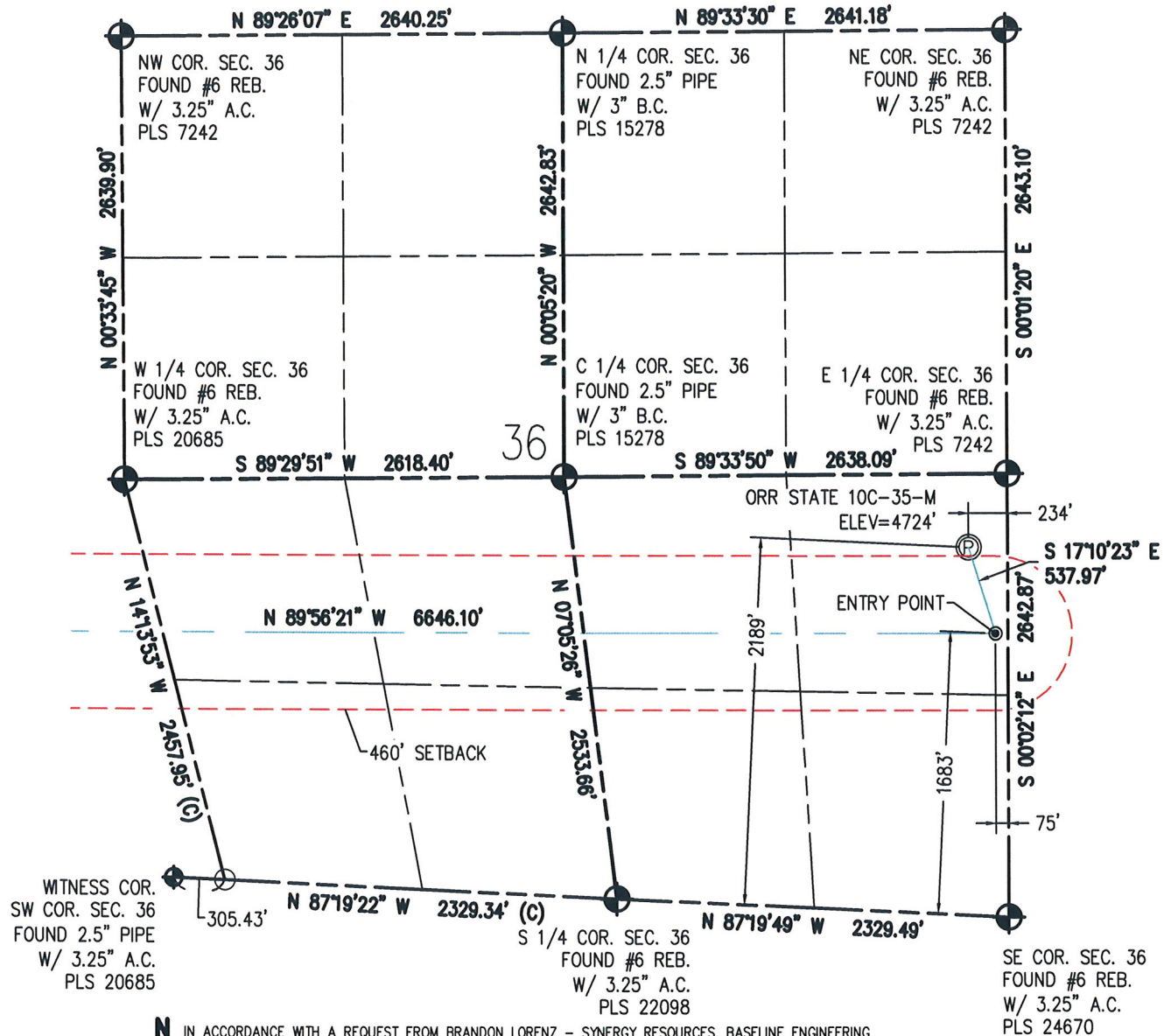


WELL LOCATION CERTIFICATE
THIS MAP DOES NOT REPRESENT A BOUNDARY SURVEY

0 1000
Scale 1" = 1000 ft

NOTES:

- 1) NEAREST CULTURAL ITEMS:
BUILDING: 1725' SW
BUILDING UNIT: 1933' SW
HIGH OCCUPANCY BUILDING UNIT: 5280'+
DESIGNATED OUTSIDE ACTIVITY AREA: 5280'+
PUBLIC ROAD: WELD COUNTY ROAD 25 223' E
ABOVE GROUND UTILITY: 210' E
RAILROAD: 5280'+
PROPERTY LINE: 234' E
- 2) SURFACE USE: GRASSLAND.
- 3) OPERATOR NAME: DARIN ZICAFOOSE.
- 4) THE NEAREST EXISTING WELL IS: STATE M36-9 184' N.
- 5) Bearings shown are grid bearings of the Colorado State Plane Coordinate System, North Zone, North American Datum 1983/2007. The lineal dimensions as contained herein are based upon the "U.S. Survey Foot."
- 6) Ground elevations are based on an observed GPS elevation (NAVD 88 DATUM).
- 7) IMPROVEMENTS: See LOCATION DRAWING for all visible improvements within 500' of disturbed area.

IN ACCORDANCE WITH A REQUEST FROM BRANDON LORENZ - SYNERGY RESOURCES, BASELINE ENGINEERING CORP. HAS DETERMINED THE LOCATION OF THE ORR STATE 10C-35-M TO BE 2189' FSL AND 234' FEL, AS MEASURED AT NINETY (90) DEGREES FROM THE SECTION LINE OF SECTION 36, TOWNSHIP 6 NORTH, RANGE 67 WEST AND THE BOTTOM HOLE LOCATION TO BE 1381' FSL AND 1641' FEL OF SECTION 35, TOWNSHIP 6 NORTH, RANGE 67 WEST, 6TH PRINCIPAL MERIDIAN, WELD COUNTY, COLORADO.

I HEREBY CERTIFY THAT THIS WELL LOCATION CERTIFICATE WAS PREPARED BY ME, OR UNDER MY DIRECT SUPERVISION, THAT THE FIELD WORK WAS COMPLETED ON 7/22/2016, THAT IT IS NOT A LAND SURVEY PLAT OR AN IMPROVEMENT SURVEY PLAT, AND THAT IT IS NOT TO BE RELIED UPON FOR ESTABLISHMENT OF FENCE, BUILDING, OR OTHER FUTURE IMPROVEMENT LINES.

SURFACE HOLE:
LATITUDE: 40.442248° N
LONGITUDE: 104.833383° W
PDOP: 1.2
1/4, 1/4: NE1/4SE1/4

BOTTOM HOLE:
LATITUDE: 40.440988° N
LONGITUDE: 104.856697° W

ENTRY POINT:
LATITUDE: 40.440834° N
LONGITUDE: 104.832826° W

LEGEND

- - FOUND/SET SURVEY MONUMENT PER MONUMENT RECORD EXCEPTIONS NOTED.
- - CALCULATED SURVEY MONUMENT POSITION
- (C) - CALCULATED DIMENSION



AARON A. DEMO
Professional Land Surveyor Registration No. 38285
State of Colorado
FOR AND ON BEHALF OF BASELINE ENGINEERING CORP.

Completed
9/29/2016

PROJECT #: SYN6N66W31-01 (ORR)

[illegible]

IN ACCORDANCE WITH A REQUEST FROM BRANDON LORENZ - SYNERGY RESOURCES, BASELINE ENGINEERING CORP. HAS DETERMINED THE LOCATION OF THE ORR STATE 10C-35-M TO BE 2189' FSL AND 234' FEL, AS MEASURED AT NINETY (90) DEGREES FROM THE SECTION LINE OF SECTION 36, TOWNSHIP 6 NORTH, RANGE 67 WEST AND THE BOTTOM HOLE LOCATION TO BE 1381' FSL AND 1641' FEL OF SECTION 35, TOWNSHIP 6 NORTH, RANGE 67 WEST, 6TH PRINCIPAL MERIDIAN, WELD COUNTY, COLORADO.

I HEREBY CERTIFY THAT THIS WELL LOCATION CERTIFICATE WAS PREPARED BY ME, OR UNDER MY DIRECT SUPERVISION, THAT THE FIELD WORK WAS COMPLETED ON 7/22/2016, THAT IT IS NOT A LAND SURVEY PLAT OR AN IMPROVEMENT SURVEY PLAT, AND THAT IT IS NOT TO BE RELIED UPON FOR ESTABLISHMENT OF FENCE, BUILDING, OR OTHER FUTURE IMPROVEMENT LINES.

SURFACE HOLE:
LATITUDE: 40.442248° N
LONGITUDE: 104.833383° W
PDOP: 1.2
1/4, 1/4: NE1/4SE1/4

BOTTOM HOLE:
LATITUDE: 40.440988° N
LONGITUDE: 104.856697° W

ENTRY POINT:
LATITUDE: 40.440834° N
LONGITUDE: 104.832826° W

NOTES:

1) NEAREST CULTURAL ITEMS:
BUILDING: 1725' SW
BUILDING UNIT: 1933' SW
HIGH OCCUPANCY BUILDING UNIT: 5280'+
DESIGNATED OUTSIDE ACTIVITY AREA: 5280'+
PUBLIC ROAD: WELD COUNTY ROAD 25 223' E
ABOVE GROUND UTILITY: 210' E
RAILROAD: 5280'+
PROPERTY LINE: 234' E

2) SURFACE USE: GRASSLAND.

3) OPERATOR NAME: DARIN ZICAFOOSE.




4) THE NEAREST EXISTING WELL IS: STATE M3

5) Bearings shown are grid bearings of the Co System, North Zone, North American Datum 1 as contained herein are based upon the "U.S.

6) Ground elevations are based on an observe

7) IMPROVEMENTS: See LOCATION DRAWING for 500' of disturbed area.

LEGEND

 - FOUND/SET SURVEY MONUMENT PER MONUMENT RECORD EXCEPTIONS NOTED.
 - CALCULATED SURVEY MONUMENT POSITION
 - CALCULATED DIMENSION

AARON A. DEMO
Professional Land Surveyor Registration No. 38285
State of Colorado
FOR AND ON BEHALF OF BASELINE ENGINEERING CORP.

PROJECT #: SYN6N66W31-01 (ORR)