

# SYNERGY RESOURCES CORPORATION

Location: COLORADO Slot: SLOT#17 ORR STATE 10C-35-M (2189'FSL & 234'FEL, SEC.36)  
Field: WELD COUNTY (NAD83, TRUE NORTH) Well: ORR STATE 10C-35-M  
Facility: SEC.36-T06N-R67W Wellbore: ORR STATE 10C-35-M PWB

Plot reference wellpath is ORR STATE 10C-35-M PWP (REV-A.0)

True vertical depths are referenced to PRECISION 562 (25KB) (RKB)	Grid System: NAD83 / Lambert Colorado SP, Northern Zone (501), US feet
Measured depths are referenced to PRECISION 562 (25KB) (RKB)	* = Wellpath was transformed from a different geodetic datum
PRECISION 562 (25KB) (RKB) to Mean Sea Level: 4749 feet	North Reference: True north
Mean Sea Level to Mud line (At Slot: SLOT#17 ORR STATE 10C-35-M (2189'FSL & 234'FEL, SEC.36)): 0 feet	Scale: True distance
Coordinates are in feet referenced to Slot	Depths are in feet
	Created by: wagnjam on 2016-10-13
	Database: WA_DEN_Denver_Defn

## Location Information

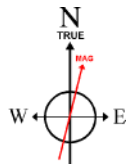
Facility Name			Grid East (US ft)	Grid North (US ft)	Latitude	Longitude
SEC.36-T06N-R67W			3185242.222	1404728.428	40°26'32.903"N	104°50'04.052"W
Slot	Local N (ft)	Local E (ft)	Grid East (US ft)	Grid North (US ft)	Latitude	Longitude
SLOT#17 ORR STATE 10C-35-M (2189'FSL& 234'FEL, SEC.36)	-81.97	299.46	3185542.273	1404648.712	40°26'32.093"N	104°50'00.179"W
PRECISION 562 (25KB) (RKB) to Mud line (At Slot: SLOT#17 ORR STATE 10C-35-M (2189'FSL& 234'FEL, SEC.36))					4749ft	
Mean Sea Level to Mud line (At Slot: SLOT#17 ORR STATE 10C-35-M (2189'FSL& 234'FEL, SEC.36))					0ft	
PRECISION 562 (25KB) (RKB) to Mean Sea Level					4749ft	

## Tie-On Position

MD (ft)	Inc (°)	Az (°)	TVD (ft)	Local N (ft)	Local E (ft)	Grid East (US ft)	Grid North (US ft)	Latitude	Longitude
25.00	0.000	120.569	25.00	0.00	0.00	3185542.27	1404648.71	40°26'32.093"N	104°50'00.179"W

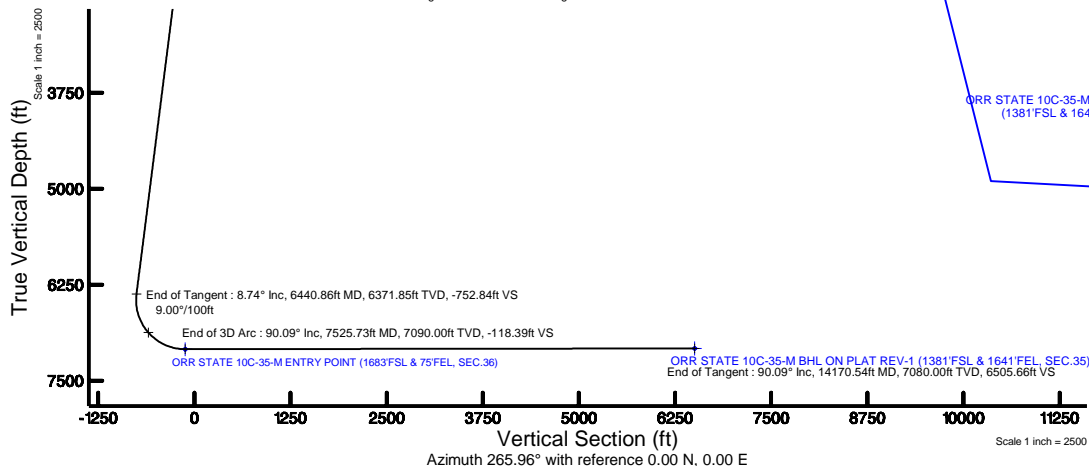
## Wellpath Comments

MD (ft)	X (ft)	Y (ft)	TVD (ft)	Inclination (°)	Azimuth (°)	VS (ft)	Comment
6809.74	730.13	-492.29	6730.00	25.998	261.397	-693.64	SHARON SPRINGS
6852.75	710.19	-495.05	6768.00	29.816	262.760	-673.56	NIO-A
7006.46	619.05	-503.76	6891.00	43.531	265.834	-582.03	NIO-B
7116.68	536.79	-508.68	6964.00	53.399	267.205	-499.63	NIO-C
7324.98	352.56	-514.44	7059.00	72.074	269.057	-315.45	FORT HAYS



BGGM (1900.0 to 2018.0) Dip: 66.91° Field: 52526 nT  
Magnetic North is 8.49 degrees East of True North (at 9/29/2016)

To correct azimuth from Magnetic to True add 8.49 degrees

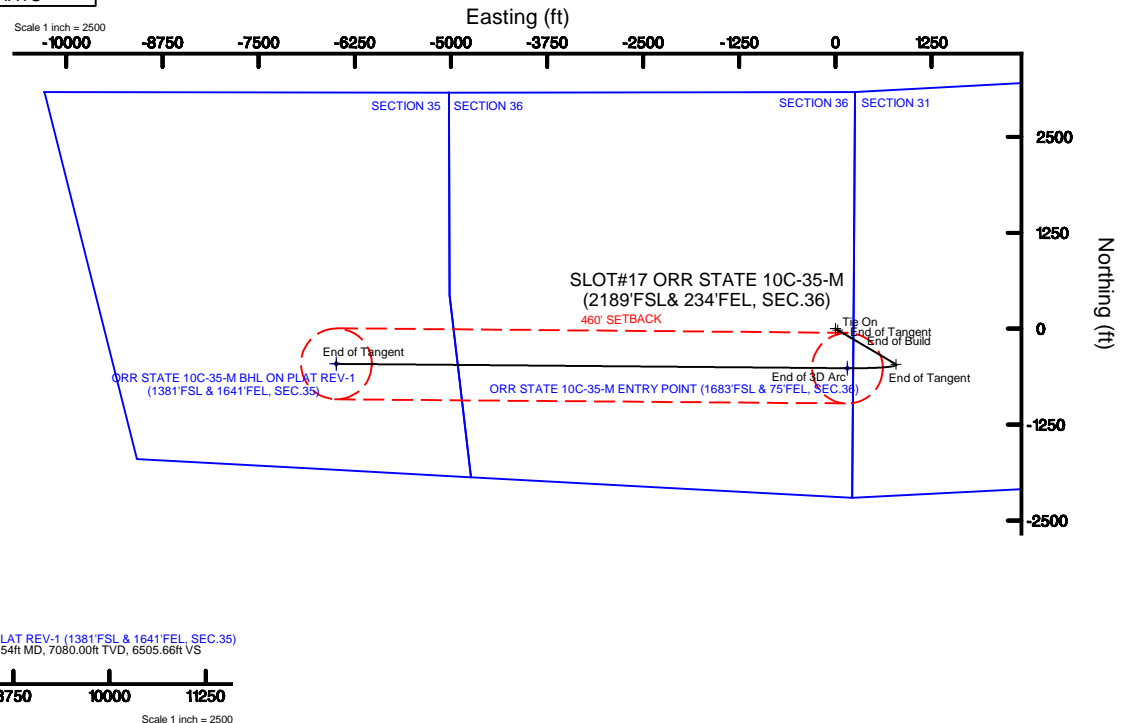


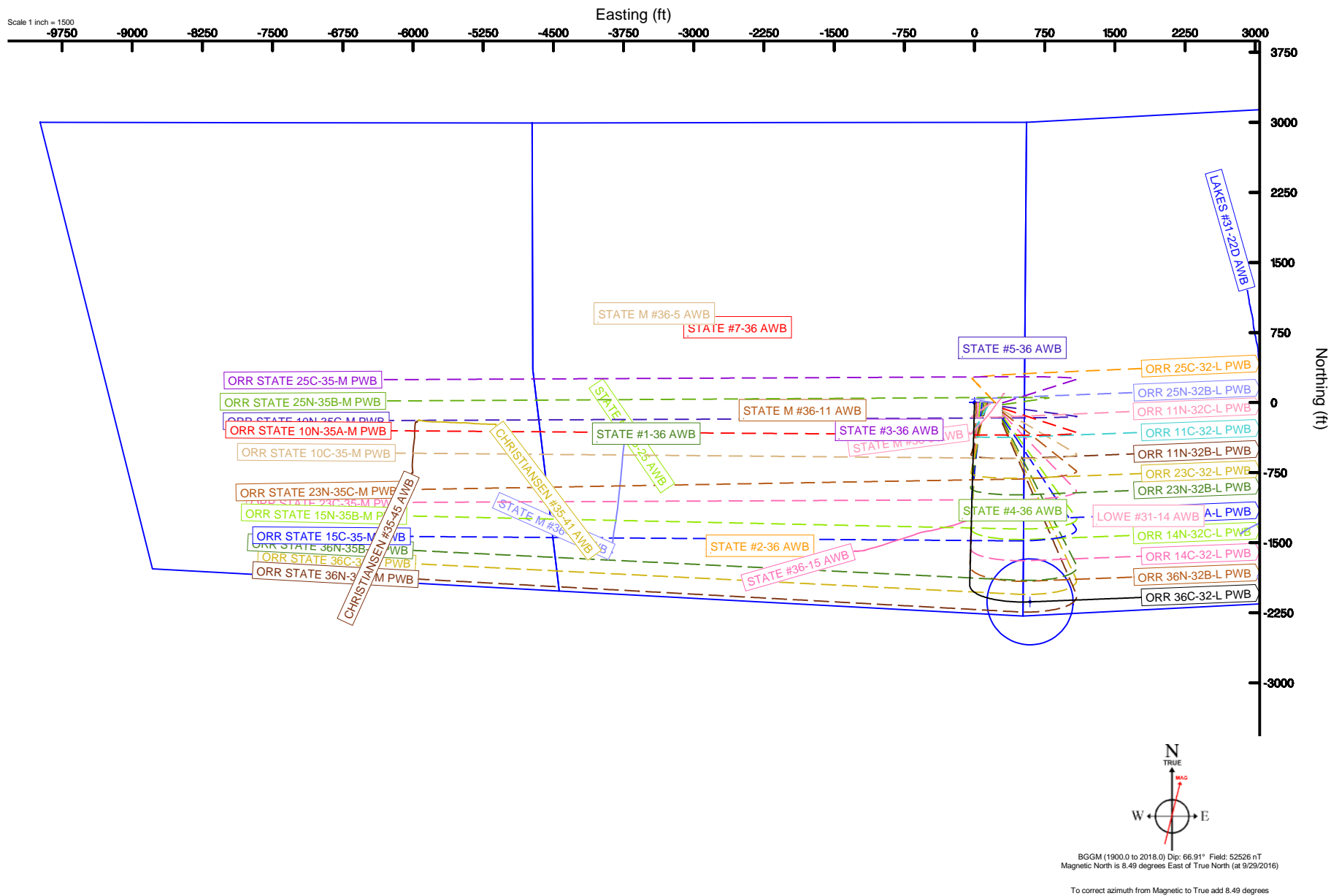
## Well Profile Data

Design Comment	MD (ft)	Inc (°)	Az (°)	TVD (ft)	Local N (ft)	Local E (ft)	DLS (°/100ft)	VS (ft)
Tie On	25.00	0.000	120.569	25.00	0.00	0.00	0.00	0.00
End of Tangent	200.00	0.000	120.569	200.00	0.00	0.00	0.00	0.00
End of Build	636.76	8.735	120.569	635.07	-16.90	28.61	2.00	-27.35
End of Tangent	6440.86	8.735	120.569	6371.85	-465.19	787.56	0.00	-752.84
End of 3D Arc	7525.73	90.086	270.491	7090.00	-515.16	155.06	9.00	-118.39
End of Tangent	14170.54	90.086	270.491	7080.00	-458.20	-6489.51	0.00	6505.66

## Targets

Name	MD (ft)	TVD (ft)	Local N (ft)	Local E (ft)	Grid East (US ft)	Grid North (US ft)	Latitude	Longitude
SEC.31-T06N-R66W		5.00	81.97	-299.45	3185242.22	1404728.43	40°26'32.903"N	104°50'04.052"W
SEC.31-T06N-R67W		5.00	81.97	-299.45	3185242.22	1404728.43	40°26'32.903"N	104°50'04.052"W
SEC.32-T06N-R66W		5.00	81.97	-299.45	3185242.22	1404728.43	40°26'32.903"N	104°50'04.052"W
SEC.32-T06N-R67W		5.00	81.97	-299.45	3185242.22	1404728.43	40°26'32.903"N	104°50'04.052"W
SEC.35-T06N-R67W		5.00	81.97	-299.45	3185242.22	1404728.43	40°26'32.903"N	104°50'04.052"W
SEC.36-T06N-R67W		5.00	81.97	-299.45	3185242.22	1404728.43	40°26'32.903"N	104°50'04.052"W
ORR STATE 10C-35-M BHL ON PLAT REV-1 (1381'FSL & 1641'FEL, SEC.35)	14170.54	7080.00	-458.20	-6489.51	3179056.65	1404141.76	40°26'27.557"N	104°51'24.109"W
ORR STATE 10C-35-M ENTRY POINT (1683'FSL & 75'FEL, SEC.36)	7525.73	7090.00	-515.16	155.06	3185701.19	1404134.75	40°26'27.002"N	104°49'58.174"W
SEC.3121-T06N-R67W 460' SETBACK		7117.00	81.97	-299.45	3185242.22	1404728.43	40°26'32.903"N	104°50'04.052"W





# ORR\_STATE\_10C-35-M\_PWP\_\_REV-A.0\_.las

## ~VERSION INFORMATION

VERS. 2.0 : CWLS LOG ASCII STANDARD-VERSION 2.0  
 WRAP. NO : ASCII DATA SECTION CONTAINS ONE ROW PER WELLPATH STATION

## ~WELL INFORMATION

#MNEM	.UNITS	DATA	:DESCRIPTION
#-----	.-----	----	:-----
STRT	.ft	0.00	:START MD
STOP	.ft	14170.54	:STOP MD
STEP	.ft	0.0	:STEP (non-uniform increment)
NULL	.	-999.99	:NULL
COMP	.	SYNERGY RESOURCES CORPORATION	:OPERATOR
WELL	.	ORR STATE 10C-35-M	:WELL
FLD	.	WELD COUNTY (NAD83,TRUE NORTH)	:FIELD
LOC	.	COLORADO	:AREA (aka: Location)
CNTY	.	N/A	:COUNTY
STAT	.	N/A	:STATE
CTRY	.	N/A	:COUNTRY
SRVC	.	Baker Hughes	:CONTRACTOR
DATE	.	09/29/2016	:LOG REV DATE
API	.		:API NUMBER

## ~OTHER INFORMATION

#Software: WellArchitect(R) Version 5.0

#MNEM	.UNITS	DATA	:DESCRIPTION
#-----	.-----	----	:-----
WPTYPE	.	PLANNED WELLPATH	:WELLPATH TYPE
FACILITY	.	SEC.36-T06N-R67W	:FACILITY
SLOT	.	SLOT#17 ORR STATE 10C-35-M (2189'FSL& 234'FEL, SEC.36):SLOT	:SLOT
WELLBORE	.	ORR STATE 10C-35-M PWB	:WELLBORE
WELLPATH	.	ORR STATE 10C-35-M PWP (REV-A.0)	:WELLPATH
MDREFPT	.	PRECISION 562 (25'KB) (RKB)	:MD REFERENCE POINT
TVDREFPT	.	PRECISION 562 (25'KB) (RKB)	:TVD REFERENCE POINT
LCLREFPT	.	SLOT	:LOCAL COORDINATE REFERENCE PT
VSAZIMUTH	.deg	265.96	:VERTICAL SECTION AZIMUTH
VSORIGN	.ft	0.00	:VERTICAL SECTION ORIGIN NORTH
VSORIGE	.ft	0.00	:VERTICAL SECTION ORIGIN EAST

## ~CURVE (WELLPATH) INFORMATION

#MNEM	.UNITS	:DESCRIPTION
#-----	.-----	:-----
DEPT	.ft	:MEASURED DEPTH
INC	.deg	:INCLINATION
AZI	.deg	:AZIMUTH
TVD	.ft	:TRUE VERTICAL DEPTH
SECT	.ft	:CROSS SECTION (CURTAIN/VERTICAL)
LOCALN	.ft	:LOCAL NORTH
LOCALE	.ft	:LOCAL EAST

# ORR\_STATE\_10C-35-M\_PWP\_\_REV-A.0\_.las

LAT .deg :LATITUDE  
 LONG .deg :LONGITUDE  
 DLS .deg/100ft :DOGLEG SEVERITY

## ~ASCII DATA

0.00	0.00	120.57	0.00	0.00	0.00	0.00	40.4422481	-104.8333831	0.00
25.00	0.00	120.57	25.00	0.00	0.00	0.00	40.4422481	-104.8333831	0.00
125.00	0.00	120.57	125.00	0.00	0.00	0.00	40.4422481	-104.8333831	0.00
200.00	0.00	120.57	200.00	0.00	0.00	0.00	40.4422481	-104.8333831	0.00
225.00	0.50	120.57	225.00	-0.09	-0.06	0.09	40.4422479	-104.8333827	2.00
325.00	2.50	120.57	324.96	-2.24	-1.39	2.35	40.4422442	-104.8333746	2.00
425.00	4.50	120.57	424.77	-7.27	-4.49	7.60	40.4422357	-104.8333557	2.00
525.00	6.50	120.57	524.30	-15.16	-9.37	15.86	40.4422223	-104.8333261	2.00
625.00	8.50	120.57	623.44	-25.90	-16.00	27.09	40.4422041	-104.8332857	2.00
636.76	8.74	120.57	635.07	-27.35	-16.90	28.61	40.4422017	-104.8332803	2.00
725.00	8.74	120.57	722.29	-38.38	-23.72	40.15	40.4421830	-104.8332388	0.00
825.00	8.74	120.57	821.13	-50.88	-31.44	53.23	40.4421618	-104.8331918	0.00
925.00	8.74	120.57	919.97	-63.38	-39.16	66.30	40.4421406	-104.8331449	0.00
1025.00	8.74	120.57	1018.81	-75.88	-46.89	79.38	40.4421194	-104.8330979	0.00
1125.00	8.74	120.57	1117.65	-88.38	-54.61	92.45	40.4420982	-104.8330509	0.00
1225.00	8.74	120.57	1216.49	-100.88	-62.33	105.53	40.4420770	-104.8330039	0.00
1325.00	8.74	120.57	1315.33	-113.38	-70.06	118.61	40.4420558	-104.8329569	0.00
1425.00	8.74	120.57	1414.17	-125.88	-77.78	131.68	40.4420346	-104.8329100	0.00
1525.00	8.74	120.57	1513.01	-138.38	-85.51	144.76	40.4420134	-104.8328630	0.00
1625.00	8.74	120.57	1611.85	-150.88	-93.23	157.83	40.4419922	-104.8328160	0.00
1725.00	8.74	120.57	1710.69	-163.38	-100.95	170.91	40.4419710	-104.8327690	0.00
1825.00	8.74	120.57	1809.53	-175.88	-108.68	183.99	40.4419498	-104.8327221	0.00
1925.00	8.74	120.57	1908.37	-188.38	-116.40	197.06	40.4419285	-104.8326751	0.00
2025.00	8.74	120.57	2007.21	-200.88	-124.12	210.14	40.4419073	-104.8326281	0.00
2125.00	8.74	120.57	2106.05	-213.37	-131.85	223.22	40.4418861	-104.8325811	0.00
2225.00	8.74	120.57	2204.89	-225.87	-139.57	236.29	40.4418649	-104.8325342	0.00
2325.00	8.74	120.57	2303.73	-238.37	-147.30	249.37	40.4418437	-104.8324872	0.00
2425.00	8.74	120.57	2402.57	-250.87	-155.02	262.44	40.4418225	-104.8324402	0.00
2525.00	8.74	120.57	2501.41	-263.37	-162.74	275.52	40.4418013	-104.8323932	0.00
2625.00	8.74	120.57	2600.25	-275.87	-170.47	288.60	40.4417801	-104.8323462	0.00
2725.00	8.74	120.57	2699.09	-288.37	-178.19	301.67	40.4417589	-104.8322993	0.00
2825.00	8.74	120.57	2797.93	-300.87	-185.91	314.75	40.4417377	-104.8322523	0.00
2925.00	8.74	120.57	2896.77	-313.37	-193.64	327.82	40.4417165	-104.8322053	0.00
3025.00	8.74	120.57	2995.61	-325.87	-201.36	340.90	40.4416953	-104.8321583	0.00
3125.00	8.74	120.57	3094.45	-338.37	-209.08	353.98	40.4416741	-104.8321114	0.00
3225.00	8.74	120.57	3193.29	-350.87	-216.81	367.05	40.4416529	-104.8320644	0.00
3325.00	8.74	120.57	3292.13	-363.37	-224.53	380.13	40.4416317	-104.8320174	0.00
3425.00	8.74	120.57	3390.97	-375.87	-232.26	393.21	40.4416105	-104.8319704	0.00
3525.00	8.74	120.57	3489.81	-388.37	-239.98	406.28	40.4415893	-104.8319235	0.00
3625.00	8.74	120.57	3588.65	-400.87	-247.70	419.36	40.4415681	-104.8318765	0.00
3725.00	8.74	120.57	3687.49	-413.37	-255.43	432.43	40.4415469	-104.8318295	0.00
3825.00	8.74	120.57	3786.33	-425.87	-263.15	445.51	40.4415257	-104.8317825	0.00
3925.00	8.74	120.57	3885.17	-438.37	-270.87	458.59	40.4415045	-104.8317355	0.00

ORR\_STATE\_10C-35-M\_PWP\_\_REV-A.0\_.las

4025.00	8.74	120.57	3984.01	-450.87	-278.60	471.66	40.4414833	-104.8316886	0.00
4125.00	8.74	120.57	4082.85	-463.37	-286.32	484.74	40.4414621	-104.8316416	0.00
4225.00	8.74	120.57	4181.69	-475.87	-294.05	497.81	40.4414409	-104.8315946	0.00
4325.00	8.74	120.57	4280.53	-488.37	-301.77	510.89	40.4414197	-104.8315476	0.00
4425.00	8.74	120.57	4379.37	-500.87	-309.49	523.97	40.4413985	-104.8315007	0.00
4525.00	8.74	120.57	4478.21	-513.37	-317.22	537.04	40.4413773	-104.8314537	0.00
4625.00	8.74	120.57	4577.05	-525.87	-324.94	550.12	40.4413561	-104.8314067	0.00
4725.00	8.74	120.57	4675.89	-538.37	-332.66	563.19	40.4413349	-104.8313597	0.00
4825.00	8.74	120.57	4774.73	-550.87	-340.39	576.27	40.4413137	-104.8313128	0.00
4925.00	8.74	120.57	4873.57	-563.37	-348.11	589.35	40.4412925	-104.8312658	0.00
5025.00	8.74	120.57	4972.41	-575.87	-355.84	602.42	40.4412713	-104.8312188	0.00
5125.00	8.74	120.57	5071.25	-588.36	-363.56	615.50	40.4412501	-104.8311718	0.00
5225.00	8.74	120.57	5170.09	-600.86	-371.28	628.58	40.4412289	-104.8311249	0.00
5325.00	8.74	120.57	5268.93	-613.36	-379.01	641.65	40.4412077	-104.8310779	0.00
5425.00	8.74	120.57	5367.77	-625.86	-386.73	654.73	40.4411865	-104.8310309	0.00
5525.00	8.74	120.57	5466.61	-638.36	-394.45	667.80	40.4411653	-104.8309839	0.00
5625.00	8.74	120.57	5565.45	-650.86	-402.18	680.88	40.4411441	-104.8309369	0.00
5725.00	8.74	120.57	5664.29	-663.36	-409.90	693.96	40.4411229	-104.8308900	0.00
5825.00	8.74	120.57	5763.13	-675.86	-417.63	707.03	40.4411017	-104.8308430	0.00
5925.00	8.74	120.57	5861.97	-688.36	-425.35	720.11	40.4410805	-104.8307960	0.00
6025.00	8.74	120.57	5960.81	-700.86	-433.07	733.18	40.4410593	-104.8307490	0.00
6125.00	8.74	120.57	6059.65	-713.36	-440.80	746.26	40.4410381	-104.8307021	0.00
6225.00	8.74	120.57	6158.49	-725.86	-448.52	759.34	40.4410169	-104.8306551	0.00
6325.00	8.74	120.57	6257.33	-738.36	-456.24	772.41	40.4409957	-104.8306081	0.00
6425.00	8.74	120.57	6356.17	-750.86	-463.97	785.49	40.4409745	-104.8305611	0.00
6440.86	8.74	120.57	6371.85	-752.84	-465.19	787.56	40.4409711	-104.8305537	0.00
6525.00	4.40	180.76	6455.50	-757.84	-471.68	793.03	40.4409533	-104.8305341	9.00
6625.00	10.03	244.67	6554.79	-749.39	-479.26	785.09	40.4409325	-104.8305626	9.00
6725.00	18.53	257.20	6651.63	-725.51	-486.52	761.67	40.4409126	-104.8306467	9.00
6825.00	27.35	261.92	6743.64	-686.81	-493.29	723.35	40.4408940	-104.8307844	9.00
6925.00	36.25	264.46	6828.54	-634.23	-499.39	671.07	40.4408773	-104.8309722	9.00
7025.00	45.19	266.10	6904.26	-569.07	-504.67	606.12	40.4408628	-104.8312056	9.00
7125.00	54.14	267.29	6968.91	-492.92	-509.01	530.09	40.4408509	-104.8314787	9.00
7225.00	63.11	268.25	7020.92	-407.68	-512.29	444.86	40.4408419	-104.8317849	9.00
7325.00	72.08	269.06	7059.01	-315.43	-514.44	352.53	40.4408360	-104.8321166	9.00
7425.00	81.05	269.79	7082.22	-218.44	-515.41	255.38	40.4408333	-104.8324656	9.00
7525.00	90.02	270.49	7090.00	-119.11	-515.17	155.78	40.4408340	-104.8328234	9.00
7525.73	90.09	270.49	7090.00	-118.39	-515.16	155.06	40.4408340	-104.8328260	9.00
7625.00	90.09	270.49	7089.85	-19.43	-514.31	55.79	40.4408363	-104.8331826	0.00
7725.00	90.09	270.49	7089.70	80.26	-513.45	-44.21	40.4408387	-104.8335419	0.00
7825.00	90.09	270.49	7089.55	179.95	-512.60	-144.20	40.4408410	-104.8339011	0.00
7925.00	90.09	270.49	7089.40	279.64	-511.74	-244.20	40.4408434	-104.8342604	0.00
8025.00	90.09	270.49	7089.25	379.32	-510.88	-344.20	40.4408457	-104.8346196	0.00
8125.00	90.09	270.49	7089.10	479.01	-510.02	-444.19	40.4408481	-104.8349788	0.00
8225.00	90.09	270.49	7088.95	578.70	-509.17	-544.19	40.4408504	-104.8353381	0.00
8325.00	90.09	270.49	7088.80	678.39	-508.31	-644.19	40.4408528	-104.8356973	0.00
8425.00	90.09	270.49	7088.65	778.07	-507.45	-744.18	40.4408551	-104.8360566	0.00
8525.00	90.09	270.49	7088.50	877.76	-506.60	-844.18	40.4408575	-104.8364158	0.00

ORR_STATE_10C-35-M_PWP_REV-A.0_.las									
8625.00	90.09	270.49	7088.35	977.45	-505.74	-944.17	40.4408598	-104.8367751	0.00
8725.00	90.09	270.49	7088.20	1077.14	-504.88	-1044.17	40.4408622	-104.8371343	0.00
8825.00	90.09	270.49	7088.04	1176.82	-504.02	-1144.17	40.4408645	-104.8374935	0.00
8925.00	90.09	270.49	7087.89	1276.51	-503.17	-1244.16	40.4408668	-104.8378528	0.00
9025.00	90.09	270.49	7087.74	1376.20	-502.31	-1344.16	40.4408692	-104.8382120	0.00
9125.00	90.09	270.49	7087.59	1475.89	-501.45	-1444.16	40.4408715	-104.8385713	0.00
9225.00	90.09	270.49	7087.44	1575.57	-500.60	-1544.15	40.4408738	-104.8389305	0.00
9325.00	90.09	270.49	7087.29	1675.26	-499.74	-1644.15	40.4408762	-104.8392897	0.00
9425.00	90.09	270.49	7087.14	1774.95	-498.88	-1744.14	40.4408785	-104.8396490	0.00
9525.00	90.09	270.49	7086.99	1874.64	-498.02	-1844.14	40.4408809	-104.8400082	0.00
9625.00	90.09	270.49	7086.84	1974.32	-497.17	-1944.14	40.4408832	-104.8403675	0.00
9725.00	90.09	270.49	7086.69	2074.01	-496.31	-2044.13	40.4408855	-104.8407267	0.00
9825.00	90.09	270.49	7086.54	2173.70	-495.45	-2144.13	40.4408878	-104.8410860	0.00
9925.00	90.09	270.49	7086.39	2273.39	-494.60	-2244.13	40.4408902	-104.8414452	0.00
10025.00	90.09	270.49	7086.24	2373.07	-493.74	-2344.12	40.4408925	-104.8418044	0.00
10125.00	90.09	270.49	7086.09	2472.76	-492.88	-2444.12	40.4408948	-104.8421637	0.00
10225.00	90.09	270.49	7085.94	2572.45	-492.02	-2544.11	40.4408972	-104.8425229	0.00
10325.00	90.09	270.49	7085.79	2672.14	-491.17	-2644.11	40.4408995	-104.8428822	0.00
10425.00	90.09	270.49	7085.64	2771.82	-490.31	-2744.11	40.4409018	-104.8432414	0.00
10525.00	90.09	270.49	7085.49	2871.51	-489.45	-2844.10	40.4409041	-104.8436007	0.00
10625.00	90.09	270.49	7085.34	2971.20	-488.59	-2944.10	40.4409064	-104.8439599	0.00
10725.00	90.09	270.49	7085.19	3070.89	-487.74	-3044.10	40.4409088	-104.8443191	0.00
10825.00	90.09	270.49	7085.03	3170.57	-486.88	-3144.09	40.4409111	-104.8446784	0.00
10925.00	90.09	270.49	7084.88	3270.26	-486.02	-3244.09	40.4409134	-104.8450376	0.00
11025.00	90.09	270.49	7084.73	3369.95	-485.17	-3344.08	40.4409157	-104.8453969	0.00
11125.00	90.09	270.49	7084.58	3469.64	-484.31	-3444.08	40.4409180	-104.8457561	0.00
11225.00	90.09	270.49	7084.43	3569.33	-483.45	-3544.08	40.4409203	-104.8461154	0.00
11325.00	90.09	270.49	7084.28	3669.01	-482.59	-3644.07	40.4409227	-104.8464746	0.00
11425.00	90.09	270.49	7084.13	3768.70	-481.74	-3744.07	40.4409250	-104.8468338	0.00
11525.00	90.09	270.49	7083.98	3868.39	-480.88	-3844.06	40.4409273	-104.8471931	0.00
11625.00	90.09	270.49	7083.83	3968.08	-480.02	-3944.06	40.4409296	-104.8475523	0.00
11725.00	90.09	270.49	7083.68	4067.76	-479.17	-4044.06	40.4409319	-104.8479116	0.00
11825.00	90.09	270.49	7083.53	4167.45	-478.31	-4144.05	40.4409342	-104.8482708	0.00
11925.00	90.09	270.49	7083.38	4267.14	-477.45	-4244.05	40.4409365	-104.8486300	0.00
12025.00	90.09	270.49	7083.23	4366.83	-476.59	-4344.05	40.4409388	-104.8489893	0.00
12125.00	90.09	270.49	7083.08	4466.51	-475.74	-4444.04	40.4409411	-104.8493485	0.00
12225.00	90.09	270.49	7082.93	4566.20	-474.88	-4544.04	40.4409434	-104.8497078	0.00
12325.00	90.09	270.49	7082.78	4665.89	-474.02	-4644.03	40.4409457	-104.8500670	0.00
12425.00	90.09	270.49	7082.63	4765.58	-473.17	-4744.03	40.4409480	-104.8504263	0.00
12525.00	90.09	270.49	7082.48	4865.26	-472.31	-4844.03	40.4409503	-104.8507855	0.00
12625.00	90.09	270.49	7082.33	4964.95	-471.45	-4944.02	40.4409526	-104.8511447	0.00
12725.00	90.09	270.49	7082.18	5064.64	-470.59	-5044.02	40.4409549	-104.8515040	0.00
12825.00	90.09	270.49	7082.02	5164.33	-469.74	-5144.02	40.4409572	-104.8518632	0.00
12925.00	90.09	270.49	7081.87	5264.01	-468.88	-5244.01	40.4409595	-104.8522225	0.00
13025.00	90.09	270.49	7081.72	5363.70	-468.02	-5344.01	40.4409618	-104.8525817	0.00
13125.00	90.09	270.49	7081.57	5463.39	-467.17	-5444.00	40.4409641	-104.8529410	0.00
13225.00	90.09	270.49	7081.42	5563.08	-466.31	-5544.00	40.4409664	-104.8533002	0.00
13325.00	90.09	270.49	7081.27	5662.76	-465.45	-5644.00	40.4409687	-104.8536595	0.00

ORR_STATE_10C-35-M_PWP__REV-A.0_.las									
13425.00	90.09	270.49	7081.12	5762.45	-464.59	-5743.99	40.4409710	-104.8540187	0.00
13525.00	90.09	270.49	7080.97	5862.14	-463.74	-5843.99	40.4409733	-104.8543779	0.00
13625.00	90.09	270.49	7080.82	5961.83	-462.88	-5943.99	40.4409755	-104.8547372	0.00
13725.00	90.09	270.49	7080.67	6061.51	-462.02	-6043.98	40.4409778	-104.8550964	0.00
13825.00	90.09	270.49	7080.52	6161.20	-461.17	-6143.98	40.4409801	-104.8554557	0.00
13925.00	90.09	270.49	7080.37	6260.89	-460.31	-6243.97	40.4409824	-104.8558149	0.00
14025.00	90.09	270.49	7080.22	6360.58	-459.45	-6343.97	40.4409847	-104.8561742	0.00
14125.00	90.09	270.49	7080.07	6460.26	-458.59	-6443.97	40.4409870	-104.8565334	0.00
14170.54	90.09	270.49	7080.00	6505.66	-458.20	-6489.51	40.4409880	-104.8566970	0.00



# Planned Wellpath Report

ORR STATE 10C-35-M PWP (REV-A.0)

Page 1 of 9



## REFERENCE WELLPATH IDENTIFICATION

Operator	SYNERGY RESOURCES CORPORATION	Slot	SLOT#17 ORR STATE 10C-35-M (2189'FSL& 234'FEL, SEC.36)
Area	COLORADO	Well	ORR STATE 10C-35-M
Field	WELD COUNTY (NAD83,TRUE NORTH)	Wellbore	ORR STATE 10C-35-M PWB
Facility	SEC.36-T06N-R67W		

## REPORT SETUP INFORMATION

Projection System	NAD83 / Lambert Colorado SP, Northern Zone (501), US feet	Software System	WellArchitect® 5.0
North Reference	True	User	Wagnjam
Scale	0.999962	Report Generated	10/14/2016 at 1:06:53 AM
Convergence at slot	0.44° East	Database/Source file	WA_DEN_Denver_Defn/ORR_STATE_10C-35-M_PWP_REV-A.0_.xml

## WELLPATH LOCATION

	Local coordinates		Grid coordinates		Geographic coordinates	
	North[ft]	East[ft]	Easting[US ft]	Northing[US ft]	Latitude	Longitude
Slot Location	-81.97	299.46	3185542.27	1404648.71	40°26'32.093"N	104°50'00.179"W
Facility Reference Pt			3185242.22	1404728.43	40°26'32.903"N	104°50'04.052"W
Field Reference Pt			3171284.48	1426358.81	40°30'07.643"N	104°53'02.634"W

## WELLPATH DATUM

Calculation method	Minimum curvature	PRECISION 562 (25'KB) (RKB) to Facility Vertical Datum	4749.00ft
Horizontal Reference Pt	Slot	PRECISION 562 (25'KB) (RKB) to Mean Sea Level	4749.00ft
Vertical Reference Pt	PRECISION 562 (25'KB) (RKB)	PRECISION 562 (25'KB) (RKB) to Mud Line at Slot (SLOT#17 ORR STATE 10C-35-M (2189'FSL& 234'FEL, SEC.36))	4749.00ft
MD Reference Pt	PRECISION 562 (25'KB) (RKB)	Section Origin	N 0.00, E 0.00 ft
Field Vertical Reference	Mean Sea Level	Section Azimuth	265.96°





# Planned Wellpath Report

ORR STATE 10C-35-M PWP (REV-A.0)

Page 2 of 9



REFERENCE WELLPATH IDENTIFICATION			
Operator	SYNERGY RESOURCES CORPORATION	Slot	SLOT#17 ORR STATE 10C-35-M (2189'FSL& 234'FEL, SEC.36)
Area	COLORADO	Well	ORR STATE 10C-35-M
Field	WELD COUNTY (NAD83,TRUE NORTH)	Wellbore	ORR STATE 10C-35-M PWB
Facility	SEC.36-T06N-R67W		

WELLPATH DATA (153 stations) † = interpolated/extrapolated station								
MD [ft]	Inclination [°]	Azimuth [°]	TVD [ft]	Vert Sect [ft]	North [ft]	East [ft]	DLS [°/100ft]	Comments
0.00†	0.000	120.569	0.00	0.00	0.00	0.00	0.00	
25.00	0.000	120.569	25.00	0.00	0.00	0.00	0.00	Tie On
125.00†	0.000	120.569	125.00	0.00	0.00	0.00	0.00	
200.00	0.000	120.569	200.00	0.00	0.00	0.00	0.00	End of Tangent
225.00†	0.500	120.569	225.00	-0.09	-0.06	0.09	2.00	
325.00†	2.500	120.569	324.96	-2.24	-1.39	2.35	2.00	
425.00†	4.500	120.569	424.77	-7.27	-4.49	7.60	2.00	
525.00†	6.500	120.569	524.30	-15.16	-9.37	15.86	2.00	
625.00†	8.500	120.569	623.44	-25.90	-16.00	27.09	2.00	
636.76	8.735	120.569	635.07	-27.35	-16.90	28.61	2.00	End of Build
725.00†	8.735	120.569	722.29	-38.38	-23.72	40.15	0.00	
825.00†	8.735	120.569	821.13	-50.88	-31.44	53.23	0.00	
925.00†	8.735	120.569	919.97	-63.38	-39.16	66.30	0.00	
1025.00†	8.735	120.569	1018.81	-75.88	-46.89	79.38	0.00	
1125.00†	8.735	120.569	1117.65	-88.38	-54.61	92.45	0.00	
1225.00†	8.735	120.569	1216.49	-100.88	-62.33	105.53	0.00	
1325.00†	8.735	120.569	1315.33	-113.38	-70.06	118.61	0.00	
1425.00†	8.735	120.569	1414.17	-125.88	-77.78	131.68	0.00	
1525.00†	8.735	120.569	1513.01	-138.38	-85.51	144.76	0.00	
1625.00†	8.735	120.569	1611.85	-150.88	-93.23	157.83	0.00	
1725.00†	8.735	120.569	1710.69	-163.38	-100.95	170.91	0.00	
1825.00†	8.735	120.569	1809.53	-175.88	-108.68	183.99	0.00	
1925.00†	8.735	120.569	1908.37	-188.38	-116.40	197.06	0.00	
2025.00†	8.735	120.569	2007.21	-200.88	-124.12	210.14	0.00	
2125.00†	8.735	120.569	2106.05	-213.37	-131.85	223.22	0.00	
2225.00†	8.735	120.569	2204.89	-225.87	-139.57	236.29	0.00	
2325.00†	8.735	120.569	2303.73	-238.37	-147.30	249.37	0.00	
2425.00†	8.735	120.569	2402.57	-250.87	-155.02	262.44	0.00	
2525.00†	8.735	120.569	2501.41	-263.37	-162.74	275.52	0.00	
2625.00†	8.735	120.569	2600.25	-275.87	-170.47	288.60	0.00	



# Planned Wellpath Report

ORR STATE 10C-35-M PWP (REV-A.0)

Page 3 of 9



REFERENCE WELLPATH IDENTIFICATION			
Operator	SYNERGY RESOURCES CORPORATION	Slot	SLOT#17 ORR STATE 10C-35-M (2189'FSL& 234'FEL, SEC.36)
Area	COLORADO	Well	ORR STATE 10C-35-M
Field	WELD COUNTY (NAD83,TRUE NORTH)	Wellbore	ORR STATE 10C-35-M PWB
Facility	SEC.36-T06N-R67W		

WELLPATH DATA (153 stations) † = interpolated/extrapolated station								
MD [ft]	Inclination [°]	Azimuth [°]	TVD [ft]	Vert Sect [ft]	North [ft]	East [ft]	DLS [°/100ft]	Comments
2725.00†	8.735	120.569	2699.09	-288.37	-178.19	301.67	0.00	
2825.00†	8.735	120.569	2797.93	-300.87	-185.91	314.75	0.00	
2925.00†	8.735	120.569	2896.77	-313.37	-193.64	327.82	0.00	
3025.00†	8.735	120.569	2995.61	-325.87	-201.36	340.90	0.00	
3125.00†	8.735	120.569	3094.45	-338.37	-209.08	353.98	0.00	
3225.00†	8.735	120.569	3193.29	-350.87	-216.81	367.05	0.00	
3325.00†	8.735	120.569	3292.13	-363.37	-224.53	380.13	0.00	
3425.00†	8.735	120.569	3390.97	-375.87	-232.26	393.21	0.00	
3525.00†	8.735	120.569	3489.81	-388.37	-239.98	406.28	0.00	
3625.00†	8.735	120.569	3588.65	-400.87	-247.70	419.36	0.00	
3725.00†	8.735	120.569	3687.49	-413.37	-255.43	432.43	0.00	
3825.00†	8.735	120.569	3786.33	-425.87	-263.15	445.51	0.00	
3925.00†	8.735	120.569	3885.17	-438.37	-270.87	458.59	0.00	
4025.00†	8.735	120.569	3984.01	-450.87	-278.60	471.66	0.00	
4125.00†	8.735	120.569	4082.85	-463.37	-286.32	484.74	0.00	
4225.00†	8.735	120.569	4181.69	-475.87	-294.05	497.81	0.00	
4325.00†	8.735	120.569	4280.53	-488.37	-301.77	510.89	0.00	
4425.00†	8.735	120.569	4379.37	-500.87	-309.49	523.97	0.00	
4525.00†	8.735	120.569	4478.21	-513.37	-317.22	537.04	0.00	
4625.00†	8.735	120.569	4577.05	-525.87	-324.94	550.12	0.00	
4725.00†	8.735	120.569	4675.89	-538.37	-332.66	563.19	0.00	
4825.00†	8.735	120.569	4774.73	-550.87	-340.39	576.27	0.00	
4925.00†	8.735	120.569	4873.57	-563.37	-348.11	589.35	0.00	
5025.00†	8.735	120.569	4972.41	-575.87	-355.84	602.42	0.00	
5125.00†	8.735	120.569	5071.25	-588.36	-363.56	615.50	0.00	
5225.00†	8.735	120.569	5170.09	-600.86	-371.28	628.58	0.00	
5325.00†	8.735	120.569	5268.93	-613.36	-379.01	641.65	0.00	
5425.00†	8.735	120.569	5367.77	-625.86	-386.73	654.73	0.00	
5525.00†	8.735	120.569	5466.61	-638.36	-394.45	667.80	0.00	
5625.00†	8.735	120.569	5565.45	-650.86	-402.18	680.88	0.00	



# Planned Wellpath Report

ORR STATE 10C-35-M PWP (REV-A.0)

Page 4 of 9



REFERENCE WELLPATH IDENTIFICATION			
Operator	SYNERGY RESOURCES CORPORATION	Slot	SLOT#17 ORR STATE 10C-35-M (2189'FSL& 234'FEL, SEC.36)
Area	COLORADO	Well	ORR STATE 10C-35-M
Field	WELD COUNTY (NAD83,TRUE NORTH)	Wellbore	ORR STATE 10C-35-M PWB
Facility	SEC.36-T06N-R67W		

WELLPATH DATA (153 stations) † = interpolated/extrapolated station								
MD [ft]	Inclination [°]	Azimuth [°]	TVD [ft]	Vert Sect [ft]	North [ft]	East [ft]	DLS [°/100ft]	Comments
5725.00†	8.735	120.569	5664.29	-663.36	-409.90	693.96	0.00	
5825.00†	8.735	120.569	5763.13	-675.86	-417.63	707.03	0.00	
5925.00†	8.735	120.569	5861.97	-688.36	-425.35	720.11	0.00	
6025.00†	8.735	120.569	5960.81	-700.86	-433.07	733.18	0.00	
6125.00†	8.735	120.569	6059.65	-713.36	-440.80	746.26	0.00	
6225.00†	8.735	120.569	6158.49	-725.86	-448.52	759.34	0.00	
6325.00†	8.735	120.569	6257.33	-738.36	-456.24	772.41	0.00	
6425.00†	8.735	120.569	6356.17	-750.86	-463.97	785.49	0.00	
6440.86	8.735	120.569	6371.85	-752.84	-465.19	787.56	0.00	End of Tangent
6525.00†	4.404	180.760	6455.50	-757.84	-471.68	793.03	9.00	
6625.00†	10.031	244.671	6554.79	-749.39	-479.26	785.09	9.00	
6725.00†	18.534	257.203	6651.63	-725.51	-486.52	761.67	9.00	
6809.74†	25.998	261.397	6730.00	-693.64	-492.29	730.13	9.00	SHARON SPRINGS
6825.00†	27.351	261.921	6743.64	-686.81	-493.29	723.35	9.00	
6852.75†	29.816	262.760	6768.00	-673.56	-495.05	710.19	9.00	NIO-A
6925.00†	36.253	264.455	6828.54	-634.23	-499.39	671.07	9.00	
7006.46†	43.531	265.834	6891.00	-582.03	-503.76	619.05	9.00	NIO-B
7025.00†	45.190	266.096	6904.26	-569.07	-504.67	606.12	9.00	
7116.68†	53.399	267.205	6964.00	-499.63	-508.68	536.79	9.00	NIO-C
7125.00†	54.144	267.293	6968.91	-492.92	-509.01	530.09	9.00	
7225.00†	63.107	268.246	7020.92	-407.68	-512.29	444.86	9.00	
7324.98†	72.074	269.057	7059.00	-315.45	-514.44	352.56	9.00	FORT HAYS
7325.00†	72.076	269.057	7059.01	-315.43	-514.44	352.53	9.00	
7425.00†	81.048	269.789	7082.22	-218.44	-515.41	255.38	9.00	
7525.00†	90.021	270.486	7090.00	-119.11	-515.17	155.78	9.00	
7525.73	90.086	270.491	7090.00†	-118.39	-515.16	155.06	9.00	End of 3D Arc
7625.00†	90.086	270.491	7089.85	-19.43	-514.31	55.79	0.00	
7725.00†	90.086	270.491	7089.70	80.26	-513.45	-44.21	0.00	
7825.00†	90.086	270.491	7089.55	179.95	-512.60	-144.20	0.00	
7925.00†	90.086	270.491	7089.40	279.64	-511.74	-244.20	0.00	



# Planned Wellpath Report

ORR STATE 10C-35-M PWP (REV-A.0)

Page 5 of 9



## REFERENCE WELLPATH IDENTIFICATION

Operator	SYNERGY RESOURCES CORPORATION	Slot	SLOT#17 ORR STATE 10C-35-M (2189'FSL& 234'FEL, SEC.36)
Area	COLORADO	Well	ORR STATE 10C-35-M
Field	WELD COUNTY (NAD83,TRUE NORTH)	Wellbore	ORR STATE 10C-35-M PWB
Facility	SEC.36-T06N-R67W		

## WELLPATH DATA (153 stations) † = interpolated/extrapolated station

MD [ft]	Inclination [°]	Azimuth [°]	TVD [ft]	Vert Sect [ft]	North [ft]	East [ft]	DLS [°/100ft]	Comments
8025.00†	90.086	270.491	7089.25	379.32	-510.88	-344.20	0.00	
8125.00†	90.086	270.491	7089.10	479.01	-510.02	-444.19	0.00	
8225.00†	90.086	270.491	7088.95	578.70	-509.17	-544.19	0.00	
8325.00†	90.086	270.491	7088.80	678.39	-508.31	-644.19	0.00	
8425.00†	90.086	270.491	7088.65	778.07	-507.45	-744.18	0.00	
8525.00†	90.086	270.491	7088.50	877.76	-506.60	-844.18	0.00	
8625.00†	90.086	270.491	7088.35	977.45	-505.74	-944.17	0.00	
8725.00†	90.086	270.491	7088.20	1077.14	-504.88	-1044.17	0.00	
8825.00†	90.086	270.491	7088.04	1176.82	-504.02	-1144.17	0.00	
8925.00†	90.086	270.491	7087.89	1276.51	-503.17	-1244.16	0.00	
9025.00†	90.086	270.491	7087.74	1376.20	-502.31	-1344.16	0.00	
9125.00†	90.086	270.491	7087.59	1475.89	-501.45	-1444.16	0.00	
9225.00†	90.086	270.491	7087.44	1575.57	-500.60	-1544.15	0.00	
9325.00†	90.086	270.491	7087.29	1675.26	-499.74	-1644.15	0.00	
9425.00†	90.086	270.491	7087.14	1774.95	-498.88	-1744.14	0.00	
9525.00†	90.086	270.491	7086.99	1874.64	-498.02	-1844.14	0.00	
9625.00†	90.086	270.491	7086.84	1974.32	-497.17	-1944.14	0.00	
9725.00†	90.086	270.491	7086.69	2074.01	-496.31	-2044.13	0.00	
9825.00†	90.086	270.491	7086.54	2173.70	-495.45	-2144.13	0.00	
9925.00†	90.086	270.491	7086.39	2273.39	-494.60	-2244.13	0.00	
10025.00†	90.086	270.491	7086.24	2373.07	-493.74	-2344.12	0.00	
10125.00†	90.086	270.491	7086.09	2472.76	-492.88	-2444.12	0.00	
10225.00†	90.086	270.491	7085.94	2572.45	-492.02	-2544.11	0.00	
10325.00†	90.086	270.491	7085.79	2672.14	-491.17	-2644.11	0.00	
10425.00†	90.086	270.491	7085.64	2771.82	-490.31	-2744.11	0.00	
10525.00†	90.086	270.491	7085.49	2871.51	-489.45	-2844.10	0.00	
10625.00†	90.086	270.491	7085.34	2971.20	-488.59	-2944.10	0.00	
10725.00†	90.086	270.491	7085.19	3070.89	-487.74	-3044.10	0.00	
10825.00†	90.086	270.491	7085.03	3170.57	-486.88	-3144.09	0.00	
10925.00†	90.086	270.491	7084.88	3270.26	-486.02	-3244.09	0.00	



# Planned Wellpath Report

ORR STATE 10C-35-M PWP (REV-A.0)

Page 6 of 9



## REFERENCE WELLPATH IDENTIFICATION

Operator	SYNERGY RESOURCES CORPORATION	Slot	SLOT#17 ORR STATE 10C-35-M (2189'FSL& 234'FEL, SEC.36)
Area	COLORADO	Well	ORR STATE 10C-35-M
Field	WELD COUNTY (NAD83,TRUE NORTH)	Wellbore	ORR STATE 10C-35-M PWB
Facility	SEC.36-T06N-R67W		

## WELLPATH DATA (153 stations) † = interpolated/extrapolated station

MD [ft]	Inclination [°]	Azimuth [°]	TVD [ft]	Vert Sect [ft]	North [ft]	East [ft]	DLS [°/100ft]	Comments
11025.00†	90.086	270.491	7084.73	3369.95	-485.17	-3344.08	0.00	
11125.00†	90.086	270.491	7084.58	3469.64	-484.31	-3444.08	0.00	
11225.00†	90.086	270.491	7084.43	3569.33	-483.45	-3544.08	0.00	
11325.00†	90.086	270.491	7084.28	3669.01	-482.59	-3644.07	0.00	
11425.00†	90.086	270.491	7084.13	3768.70	-481.74	-3744.07	0.00	
11525.00†	90.086	270.491	7083.98	3868.39	-480.88	-3844.06	0.00	
11625.00†	90.086	270.491	7083.83	3968.08	-480.02	-3944.06	0.00	
11725.00†	90.086	270.491	7083.68	4067.76	-479.17	-4044.06	0.00	
11825.00†	90.086	270.491	7083.53	4167.45	-478.31	-4144.05	0.00	
11925.00†	90.086	270.491	7083.38	4267.14	-477.45	-4244.05	0.00	
12025.00†	90.086	270.491	7083.23	4366.83	-476.59	-4344.05	0.00	
12125.00†	90.086	270.491	7083.08	4466.51	-475.74	-4444.04	0.00	
12225.00†	90.086	270.491	7082.93	4566.20	-474.88	-4544.04	0.00	
12325.00†	90.086	270.491	7082.78	4665.89	-474.02	-4644.03	0.00	
12425.00†	90.086	270.491	7082.63	4765.58	-473.17	-4744.03	0.00	
12525.00†	90.086	270.491	7082.48	4865.26	-472.31	-4844.03	0.00	
12625.00†	90.086	270.491	7082.33	4964.95	-471.45	-4944.02	0.00	
12725.00†	90.086	270.491	7082.18	5064.64	-470.59	-5044.02	0.00	
12825.00†	90.086	270.491	7082.02	5164.33	-469.74	-5144.02	0.00	
12925.00†	90.086	270.491	7081.87	5264.01	-468.88	-5244.01	0.00	
13025.00†	90.086	270.491	7081.72	5363.70	-468.02	-5344.01	0.00	
13125.00†	90.086	270.491	7081.57	5463.39	-467.17	-5444.00	0.00	
13225.00†	90.086	270.491	7081.42	5563.08	-466.31	-5544.00	0.00	
13325.00†	90.086	270.491	7081.27	5662.76	-465.45	-5644.00	0.00	
13425.00†	90.086	270.491	7081.12	5762.45	-464.59	-5743.99	0.00	
13525.00†	90.086	270.491	7080.97	5862.14	-463.74	-5843.99	0.00	
13625.00†	90.086	270.491	7080.82	5961.83	-462.88	-5943.99	0.00	
13725.00†	90.086	270.491	7080.67	6061.51	-462.02	-6043.98	0.00	
13825.00†	90.086	270.491	7080.52	6161.20	-461.17	-6143.98	0.00	
13925.00†	90.086	270.491	7080.37	6260.89	-460.31	-6243.97	0.00	



# Planned Wellpath Report

ORR STATE 10C-35-M PWP (REV-A.0)

Page 7 of 9



## REFERENCE WELLPATH IDENTIFICATION

Operator	SYNERGY RESOURCES CORPORATION	Slot	SLOT#17 ORR STATE 10C-35-M (2189'FSL& 234'FEL, SEC.36)
Area	COLORADO	Well	ORR STATE 10C-35-M
Field	WELD COUNTY (NAD83,TRUE NORTH)	Wellbore	ORR STATE 10C-35-M PWB
Facility	SEC.36-T06N-R67W		

## WELLPATH DATA (153 stations) † = interpolated/extrapolated station

MD [ft]	Inclination [°]	Azimuth [°]	TVD [ft]	Vert Sect [ft]	North [ft]	East [ft]	DLS [°/100ft]	Comments
14025.00†	90.086	270.491	7080.22	6360.58	-459.45	-6343.97	0.00	
14125.00†	90.086	270.491	7080.07	6460.26	-458.59	-6443.97	0.00	
14170.54	90.086	270.491	7080.00 <sup>2</sup>	6505.66	-458.20	-6489.51	0.00	End of Tangent

## HOLE & CASING SECTIONS

- Ref Wellbore: ORR STATE 10C-35-M PWB

Ref Wellpath: ORR STATE 10C-35-M PWP (REV-A.0)

String/Diameter	Start MD [ft]	End MD [ft]	Interval [ft]	Start TVD [ft]	End TVD [ft]	Start N/S [ft]	Start E/W [ft]	End N/S [ft]	End E/W [ft]
13.5in Open Hole	25.00	1800.00	1775.00	25.00	1784.82	0.00	0.00	-106.75	180.72
8.5in Open Hole	1800.00	14200.00	12400.00	1784.82	N/A	-106.75	180.72	N/A	N/A



# Planned Wellpath Report

ORR STATE 10C-35-M PWP (REV-A.0)

Page 8 of 9



## REFERENCE WELLPATH IDENTIFICATION

Operator	SYNERGY RESOURCES CORPORATION	Slot	SLOT#17 ORR STATE 10C-35-M (2189'FSL & 234'FEL, SEC.36)
Area	COLORADO	Well	ORR STATE 10C-35-M
Field	WELD COUNTY (NAD83, TRUE NORTH)	Wellbore	ORR STATE 10C-35-M PWB
Facility	SEC.36-T06N-R67W		

## TARGETS

Name	MD [ft]	TVD [ft]	North [ft]	East [ft]	Grid East [US ft]	Grid North [US ft]	Latitude	Longitude	Shape
SEC.31-T06N-R66W		5.00	81.97	-299.45	3185242.22	1404728.43	40°26'32.903"N	104°50'04.052"W	polygon
SEC.31-T06N-R67W		5.00	81.97	-299.45	3185242.22	1404728.43	40°26'32.903"N	104°50'04.052"W	point
SEC.32-T06N-R66W		5.00	81.97	-299.45	3185242.22	1404728.43	40°26'32.903"N	104°50'04.052"W	polygon
SEC.32-T06N-R67W		5.00	81.97	-299.45	3185242.22	1404728.43	40°26'32.903"N	104°50'04.052"W	point
SEC.35-T06N-R67W		5.00	81.97	-299.45	3185242.22	1404728.43	40°26'32.903"N	104°50'04.052"W	polygon
SEC.36-T06N-R67W		5.00	81.97	-299.45	3185242.22	1404728.43	40°26'32.903"N	104°50'04.052"W	polygon
2) ORR STATE 10C-35-M BHL ON PLAT REV-1 (1381'FSL & 1641'FEL, SEC.35)	14170.54	7080.00	-458.20	-6489.51	3179056.65	1404141.76	40°26'27.557"N	104°51'24.109"W	circle
1) ORR STATE 10C-35-M ENTRY POINT (1683'FSL & 75'FEL, SEC.36)	7525.73	7090.00	-515.16	155.06	3185701.19	1404134.75	40°26'27.002"N	104°49'58.174"W	circle
SEC.31/21-T06N-R67W 460' SETBACK		7117.00	81.97	-299.45	3185242.22	1404728.43	40°26'32.903"N	104°50'04.052"W	point

## SURVEY PROGRAM -

Ref Wellbore: ORR STATE 10C-35-M PWB      Ref Wellpath: ORR STATE 10C-35-M PWP (REV-A.0)

Start MD [ft]	End MD [ft]	Positional Uncertainty Model	Log Name/Comment	Wellbore
25.00	14170.54	BHI NaviTrak (Standard)		ORR STATE 10C-35-M PWB





# Planned Wellpath Report

ORR STATE 10C-35-M PWP (REV-A.0)  
Page 9 of 9



REFERENCE WELLPATH IDENTIFICATION			
Operator	SYNERGY RESOURCES CORPORATION	Slot	SLOT#17 ORR STATE 10C-35-M (2189'FSL& 234'FEL, SEC.36)
Area	COLORADO	Well	ORR STATE 10C-35-M
Field	WELD COUNTY (NAD83,TRUE NORTH)	Wellbore	ORR STATE 10C-35-M PWB
Facility	SEC.36-T06N-R67W		

WELLPATH COMMENTS				
MD [ft]	Inclination [°]	Azimuth [°]	TVD [ft]	Comment
6809.74	25.998	261.397	6730.00	SHARON SPRINGS
6852.75	29.816	262.760	6768.00	NIO-A
7006.46	43.531	265.834	6891.00	NIO-B
7116.68	53.399	267.205	6964.00	NIO-C
7324.98	72.074	269.057	7059.00	FORT HAYS