

# BONANZA CREEK OIL COMPANY

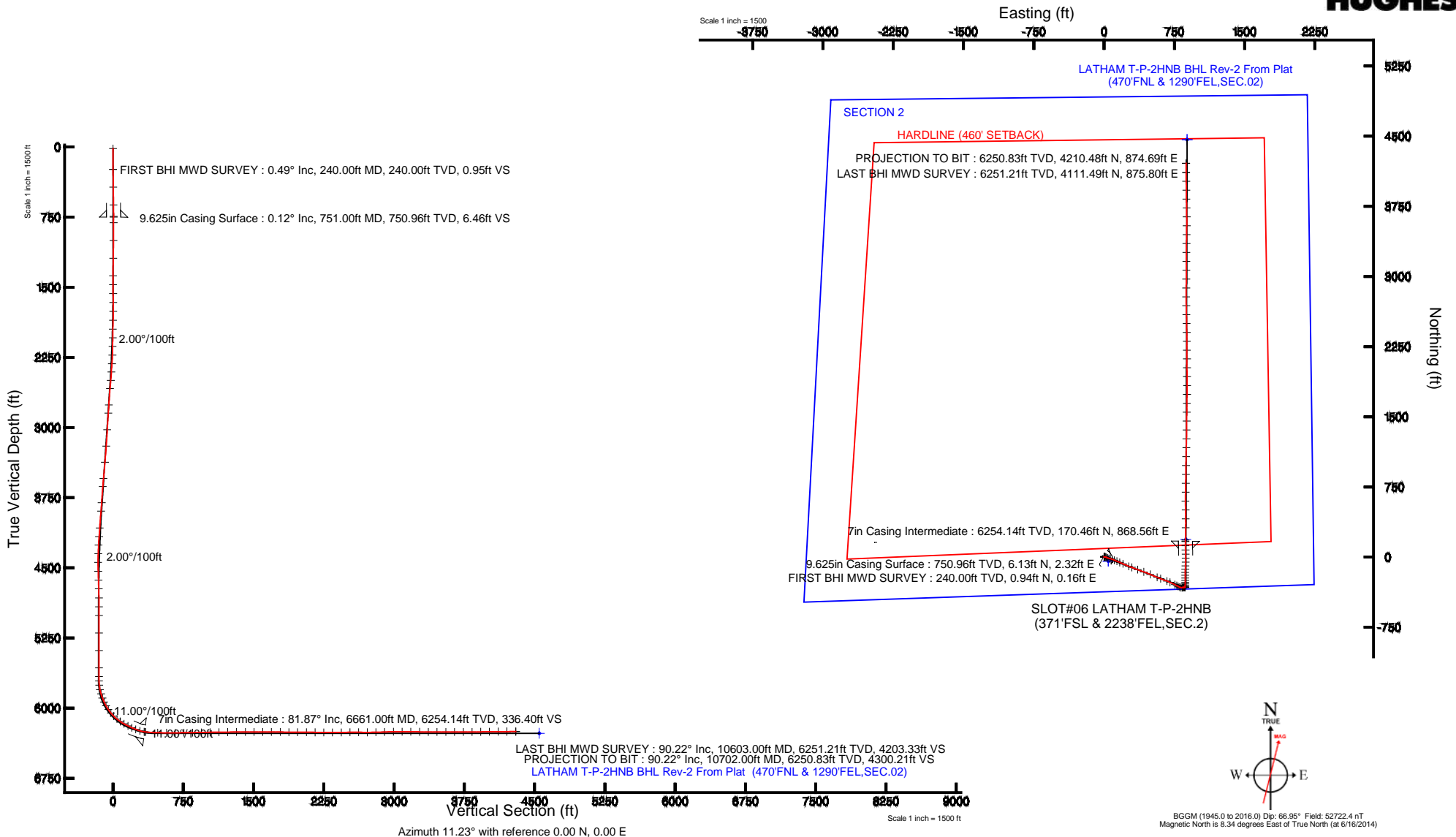
Location: COLORADO Slot: SLOT#06 LATHAM T-P-2HNB (371'FSL & 2238'FEL,SEC.2)  
Field: WELD COUNTY Well: LATHAM T-P-2HNB  
Facility: SEC.02-T4N-R63W Wellbore: LATHAM T-P-2HNB PWB

Plot reference wellpath is LATHAM T-P-2HNB (REV-B.0) PWP

True vertical depths are referenced to RIG (RKB)	Grid System: NAD83 / Lambert Colorado SP, Northern Zone (501), US feet
Measured depths are referenced to RIG (RKB)	North Reference: True north
RIG (RKB) to Mean Sea Level: 4537 feet	Scale: True distance
Mean Sea Level to Mud line (At Slot: SLOT#06 LATHAM T-P-2HNB (371'FSL & 2238'FEL,SEC.2)): 0 feet	Depths are in feet
Coordinates are in feet referenced to Slot	Created by: guenaler on 10/15/2014

## Location Information

Facility Name			Grid East (US ft)	Grid North (US ft)	Latitude	Longitude
SEC.02-T4N-R63W			3305684.609	1366847.824	40°20'06.756"N	104°24'12.420"W
Slot	Local N (ft)	Local E (ft)	Grid East (US ft)	Grid North (US ft)	Latitude	Longitude
SLOT#06 LATHAM T-P-2HNB (371'FSL & 2238'FEL,SEC.2)	54.65	-89.21	3305594.732	1366901.361	40°20'07.296"N	104°24'13.572"W
RIG (RKB) to Mud line (At Slot: SLOT#06 LATHAM T-P-2HNB (371'FSL & 2238'FEL,SEC.2))					4537ft	
Mean Sea Level to Mud line (At Slot: SLOT#06 LATHAM T-P-2HNB (371'FSL & 2238'FEL,SEC.2))					0ft	
RIG (RKB) to Mean Sea Level					4537ft	





# Actual Wellpath Report

## LATHAM T-P-2HNB AWP

Page 1 of 7



### REFERENCE WELLPATH IDENTIFICATION

Operator	BONANZA CREEK OIL COMPANY	Slot	SLOT#06 LATHAM T-P-2HNB (371'FSL & 2238'FEL,SEC.2)
Area	COLORADO	Well	LATHAM T-P-2HNB
Field	WELD COUNTY	Wellbore	LATHAM T-P-2HNB AWB
Facility	SEC.02-T4N-R63W		

### REPORT SETUP INFORMATION

Projection System	NAD83 / Lambert Colorado SP, Northern Zone (501), US feet	Software System	WellArchitect® 4.0.0
North Reference	True	User	Guenaler
Scale	0.999958	Report Generated	10/15/2014 at 3:42:38 PM
Convergence at slot	n/a	Database/Source file	WA_Denver/LATHAM_T-P-2HNB_AWB.xml

### WELLPATH LOCATION

	Local coordinates		Grid coordinates		Geographic coordinates	
	North[ft]	East[ft]	Easting[US ft]	Northing[US ft]	Latitude	Longitude
Slot Location	54.65	-89.21	3305594.73	1366901.36	40°20'07.296"N	104°24'13.572"W
Facility Reference Pt			3305684.61	1366847.82	40°20'06.756"N	104°24'12.420"W
Field Reference Pt			3335925.10	1457282.25	40°34'56.460"N	104°17'26.016"W

### WELLPATH DATUM

Calculation method	Minimum curvature	RIG (RKB) to Facility Vertical Datum	4537.00ft
Horizontal Reference Pt	Slot	RIG (RKB) to Mean Sea Level	4537.00ft
Vertical Reference Pt	RIG (RKB)	RIG (RKB) to Mud Line at Slot (SLOT#06 LATHAM T-P-2HNB (371'FSL & 2238'FEL,SEC.2))	4537.00ft
MD Reference Pt	RIG (RKB)	Section Origin	N 0.00, E 0.00 ft
Field Vertical Reference	Mean Sea Level	Section Azimuth	11.74°



# Actual Wellpath Report

LATHAM T-P-2HNB AWP

Page 2 of 7



## REFERENCE WELLPATH IDENTIFICATION

Operator	BONANZA CREEK OIL COMPANY	Slot	SLOT#06 LATHAM T-P-2HNB (371'FSL & 2238'FEL,SEC.2)
Area	COLORADO	Well	LATHAM T-P-2HNB
Field	WELD COUNTY	Wellbore	LATHAM T-P-2HNB AWP
Facility	SEC.02-T4N-R63W		

## WELLPATH DATA (108 stations) † = interpolated/extrapolated station

MD [ft]	Inclination [°]	Azimuth [°]	TVD [ft]	Vert Sect [ft]	North [ft]	East [ft]	Latitude	Longitude	DLS [°/100ft]	Comments
0.00†	0.000	9.620	0.00	0.00	0.00	0.00	40°20'07.296"N	104°24'13.572"W	0.00	
17.00	0.000	9.620	17.00	0.00	0.00	0.00	40°20'07.296"N	104°24'13.572"W	0.00	
240.00	0.490	9.620	240.00	0.95	0.94	0.16	40°20'07.305"N	104°24'13.570"W	0.22	FIRST BHI MWD SURVEY
430.00	0.650	19.930	429.99	2.83	2.75	0.66	40°20'07.323"N	104°24'13.563"W	0.10	
619.00	1.020	26.600	618.97	5.52	5.27	1.78	40°20'07.348"N	104°24'13.549"W	0.20	
742.00	0.100	157.380	741.96	6.49	6.15	2.31	40°20'07.357"N	104°24'13.542"W	0.88	
810.00	0.440	223.610	809.96	6.22	5.90	2.16	40°20'07.354"N	104°24'13.544"W	0.60	
1000.00	0.460	194.470	999.95	4.84	4.64	1.46	40°20'07.342"N	104°24'13.553"W	0.12	
1190.00	0.920	189.680	1189.94	2.55	2.39	1.01	40°20'07.320"N	104°24'13.559"W	0.24	
1379.00	0.340	226.260	1378.93	0.57	0.51	0.35	40°20'07.301"N	104°24'13.567"W	0.36	
1474.00	1.900	96.850	1473.91	0.47	0.13	1.71	40°20'07.297"N	104°24'13.550"W	2.24	
1569.00	2.220	81.150	1568.85	1.25	0.22	5.10	40°20'07.298"N	104°24'13.506"W	0.68	
1664.00	3.180	88.400	1663.75	2.51	0.58	9.55	40°20'07.302"N	104°24'13.449"W	1.07	
1759.00	4.800	103.020	1758.51	3.03	-0.24	16.06	40°20'07.294"N	104°24'13.365"W	2.00	
1854.00	7.330	117.200	1852.98	1.32	-3.91	25.32	40°20'07.257"N	104°24'13.245"W	3.08	
1949.00	8.890	109.610	1947.03	-1.30	-9.14	37.63	40°20'07.206"N	104°24'13.086"W	1.99	
2043.00	9.200	104.160	2039.86	-2.61	-13.42	51.75	40°20'07.163"N	104°24'12.904"W	0.97	
2138.00	10.430	105.110	2133.47	-3.44	-17.52	67.42	40°20'07.123"N	104°24'12.701"W	1.31	
2233.00	13.580	109.530	2226.38	-5.46	-23.49	86.24	40°20'07.064"N	104°24'12.458"W	3.45	
2327.00	17.070	115.940	2317.03	-10.34	-33.22	109.05	40°20'06.968"N	104°24'12.164"W	4.12	
2421.00	19.570	110.760	2406.27	-16.20	-44.84	136.19	40°20'06.853"N	104°24'11.813"W	3.17	
2516.00	22.330	112.920	2494.98	-22.20	-57.51	167.69	40°20'06.728"N	104°24'11.407"W	3.02	
2611.00	22.270	114.050	2582.88	-29.54	-71.87	200.76	40°20'06.586"N	104°24'10.980"W	0.46	
2800.00	20.300	111.060	2758.98	-42.49	-98.25	264.06	40°20'06.325"N	104°24'10.162"W	1.19	
2894.00	21.830	110.630	2846.70	-47.83	-110.27	295.64	40°20'06.206"N	104°24'09.754"W	1.64	
3083.00	20.010	110.280	3023.23	-58.07	-133.86	358.86	40°20'05.973"N	104°24'08.938"W	0.97	
3272.00	22.830	110.500	3199.16	-68.46	-157.91	423.55	40°20'05.736"N	104°24'08.103"W	1.49	
3460.00	23.940	113.050	3371.72	-81.50	-185.62	492.82	40°20'05.462"N	104°24'07.208"W	0.80	
3650.00	25.250	112.160	3544.48	-96.40	-216.00	565.82	40°20'05.161"N	104°24'06.266"W	0.72	
3745.00	23.870	110.990	3630.88	-103.16	-230.53	602.53	40°20'05.018"N	104°24'05.792"W	1.54	



# Actual Wellpath Report

LATHAM T-P-2HNB AWP

Page 3 of 7



## REFERENCE WELLPATH IDENTIFICATION

Operator	BONANZA CREEK OIL COMPANY	Slot	SLOT#06 LATHAM T-P-2HNB (371'FSL & 2238'FEL,SEC.2)
Area	COLORADO	Well	LATHAM T-P-2HNB
Field	WELD COUNTY	Wellbore	LATHAM T-P-2HNB AWP
Facility	SEC.02-T4N-R63W		

## WELLPATH DATA (108 stations)

MD [ft]	Inclination [°]	Azimuth [°]	TVD [ft]	Vert Sect [ft]	North [ft]	East [ft]	Latitude	Longitude	DLS [°/100ft]	Comments
3934.00	22.530	110.200	3804.59	-114.64	-256.73	672.22	40°20'04.759"N	104°24'04.892"W	0.73	
4029.00	20.350	115.730	3893.02	-121.31	-270.19	704.19	40°20'04.626"N	104°24'04.479"W	3.13	
4218.00	14.460	114.770	4073.29	-134.59	-294.37	755.27	40°20'04.387"N	104°24'03.819"W	3.12	
4313.00	13.280	121.220	4165.52	-140.91	-304.99	775.37	40°20'04.282"N	104°24'03.560"W	2.05	
4406.00	10.480	116.750	4256.52	-146.66	-314.34	792.06	40°20'04.190"N	104°24'03.344"W	3.17	
4500.00	8.620	113.920	4349.22	-150.37	-321.04	806.14	40°20'04.123"N	104°24'03.162"W	2.04	
4594.00	9.180	103.130	4442.09	-152.03	-325.60	819.88	40°20'04.078"N	104°24'02.985"W	1.87	
4689.00	6.090	82.330	4536.26	-150.54	-326.65	832.26	40°20'04.068"N	104°24'02.825"W	4.31	
4784.00	4.440	80.440	4630.85	-147.53	-325.37	840.88	40°20'04.081"N	104°24'02.714"W	1.75	
4878.00	3.210	66.160	4724.64	-144.68	-323.70	846.87	40°20'04.097"N	104°24'02.636"W	1.65	
4976.00	2.580	78.650	4822.52	-142.22	-322.16	851.55	40°20'04.112"N	104°24'02.576"W	0.91	
5070.00	2.490	97.690	4916.43	-141.25	-322.01	855.64	40°20'04.114"N	104°24'02.523"W	0.90	
5163.00	1.230	102.150	5009.38	-141.11	-322.49	858.62	40°20'04.109"N	104°24'02.485"W	1.36	
5350.00	0.550	101.730	5196.35	-141.13	-323.10	861.46	40°20'04.103"N	104°24'02.448"W	0.36	
5537.00	0.600	110.700	5383.34	-141.28	-323.63	863.26	40°20'04.098"N	104°24'02.425"W	0.05	
5724.00	0.590	135.970	5570.33	-141.97	-324.67	864.84	40°20'04.088"N	104°24'02.404"W	0.14	
5817.00	0.550	321.440	5663.33	-141.96	-324.66	864.90	40°20'04.088"N	104°24'02.404"W	1.22	
5864.00	1.450	351.000	5710.33	-141.26	-323.90	864.66	40°20'04.095"N	104°24'02.407"W	2.15	
5909.00	6.020	358.580	5755.22	-138.42	-320.98	864.52	40°20'04.124"N	104°24'02.409"W	10.19	
5956.00	12.440	359.190	5801.59	-131.08	-313.44	864.38	40°20'04.198"N	104°24'02.410"W	13.66	
6002.00	16.110	1.770	5846.16	-119.95	-302.10	864.51	40°20'04.311"N	104°24'02.409"W	8.10	
6050.00	20.240	2.950	5891.75	-105.18	-287.15	865.14	40°20'04.458"N	104°24'02.401"W	8.64	
6096.00	24.590	1.990	5934.27	-87.87	-269.63	865.89	40°20'04.631"N	104°24'02.391"W	9.49	
6143.00	30.050	1.140	5976.01	-66.65	-248.08	866.46	40°20'04.844"N	104°24'02.383"W	11.65	
6189.00	35.030	359.580	6014.78	-42.41	-223.34	866.59	40°20'05.089"N	104°24'02.382"W	10.98	
6237.00	39.670	0.160	6052.92	-13.92	-194.23	866.53	40°20'05.377"N	104°24'02.383"W	9.69	
6281.00	45.000	0.180	6085.44	15.10	-164.61	866.62	40°20'05.669"N	104°24'02.381"W	12.11	
6328.00	51.350	1.610	6116.76	49.49	-129.61	867.19	40°20'06.015"N	104°24'02.374"W	13.70	
6373.00	56.180	2.570	6143.36	85.26	-93.35	868.52	40°20'06.373"N	104°24'02.357"W	10.87	
6420.00	60.120	2.760	6168.15	124.68	-53.48	870.38	40°20'06.767"N	104°24'02.333"W	8.39	



# Actual Wellpath Report

LATHAM T-P-2HNB AWP

Page 4 of 7



## REFERENCE WELLPATH IDENTIFICATION

Operator	BONANZA CREEK OIL COMPANY	Slot	SLOT#06 LATHAM T-P-2HNB (371'FSL & 2238'FEL,SEC.2)
Area	COLORADO	Well	LATHAM T-P-2HNB
Field	WELD COUNTY	Wellbore	LATHAM T-P-2HNB AWP
Facility	SEC.02-T4N-R63W		

## WELLPATH DATA (108 stations)

MD [ft]	Inclination [°]	Azimuth [°]	TVD [ft]	Vert Sect [ft]	North [ft]	East [ft]	Latitude	Longitude	DLS [°/100ft]	Comments
6468.00	64.070	359.660	6190.62	166.36	-11.08	871.26	40°20'07.186"N	104°24'02.321"W	10.01	
6515.00	67.750	358.880	6209.80	208.25	31.81	870.70	40°20'07.610"N	104°24'02.329"W	7.97	
6562.00	68.430	358.510	6227.34	250.73	75.41	869.71	40°20'08.041"N	104°24'02.341"W	1.62	
6609.00	73.060	358.820	6242.83	293.94	119.75	868.68	40°20'08.479"N	104°24'02.355"W	9.87	
6657.00	81.130	0.720	6253.54	339.67	166.50	868.50	40°20'08.941"N	104°24'02.357"W	17.25	
6674.00	84.290	1.100	6255.70	356.23	183.36	868.77	40°20'09.108"N	104°24'02.353"W	18.72	
6805.00	89.230	1.280	6263.10	484.77	314.08	871.49	40°20'10.400"N	104°24'02.318"W	3.77	
6900.00	89.750	358.740	6263.95	577.78	409.07	871.50	40°20'11.338"N	104°24'02.318"W	2.73	
6995.00	90.180	359.270	6264.01	670.44	504.05	869.86	40°20'12.277"N	104°24'02.339"W	0.72	
7090.00	90.800	359.720	6263.19	763.28	599.05	869.02	40°20'13.215"N	104°24'02.350"W	0.81	
7185.00	91.180	1.400	6261.55	856.46	694.02	869.95	40°20'14.154"N	104°24'02.338"W	1.81	
7280.00	90.960	0.710	6259.78	949.80	788.99	871.69	40°20'15.092"N	104°24'02.315"W	0.76	
7375.00	90.430	1.090	6258.63	1043.10	883.97	873.19	40°20'16.031"N	104°24'02.296"W	0.69	
7470.00	91.110	0.110	6257.35	1136.30	978.96	874.18	40°20'16.970"N	104°24'02.283"W	1.26	
7565.00	90.190	1.570	6256.27	1229.58	1073.94	875.57	40°20'17.908"N	104°24'02.265"W	1.82	
7660.00	90.860	0.830	6255.40	1322.97	1168.91	877.56	40°20'18.847"N	104°24'02.239"W	1.05	
7756.00	89.470	1.340	6255.12	1417.31	1264.89	879.38	40°20'19.795"N	104°24'02.216"W	1.54	
7850.00	90.340	0.820	6255.28	1509.69	1358.87	881.15	40°20'20.724"N	104°24'02.193"W	1.08	
7945.00	90.340	359.980	6254.72	1602.83	1453.87	881.82	40°20'21.663"N	104°24'02.184"W	0.88	
8040.00	90.120	0.490	6254.34	1695.93	1548.86	882.21	40°20'22.601"N	104°24'02.179"W	0.58	
8135.00	88.600	0.870	6255.40	1789.15	1643.85	883.33	40°20'23.540"N	104°24'02.165"W	1.65	
8230.00	89.690	0.820	6256.81	1882.43	1738.83	884.73	40°20'24.478"N	104°24'02.147"W	1.15	
8325.00	90.650	359.710	6256.53	1975.53	1833.82	885.17	40°20'25.417"N	104°24'02.141"W	1.54	
8421.00	88.830	359.810	6256.97	2069.44	1929.82	884.77	40°20'26.366"N	104°24'02.146"W	1.90	
8515.00	89.080	359.530	6258.68	2161.34	2023.80	884.23	40°20'27.295"N	104°24'02.153"W	0.40	
8610.00	89.570	0.340	6259.80	2254.33	2118.79	884.12	40°20'28.233"N	104°24'02.154"W	1.00	
8704.00	90.250	359.560	6259.95	2346.35	2212.79	884.04	40°20'29.162"N	104°24'02.155"W	1.10	
8799.00	90.430	359.340	6259.39	2439.17	2307.78	883.13	40°20'30.101"N	104°24'02.167"W	0.30	
8894.00	90.960	359.330	6258.23	2531.95	2402.77	882.03	40°20'31.039"N	104°24'02.181"W	0.56	
8989.00	89.130	359.160	6258.16	2624.69	2497.76	880.77	40°20'31.978"N	104°24'02.197"W	1.93	



# Actual Wellpath Report

## LATHAM T-P-2HNB AWP

Page 5 of 7



### REFERENCE WELLPATH IDENTIFICATION

Operator	BONANZA CREEK OIL COMPANY	Slot	SLOT#06 LATHAM T-P-2HNB (371'FSL & 2238'FEL,SEC.2)
Area	COLORADO	Well	LATHAM T-P-2HNB
Field	WELD COUNTY	Wellbore	LATHAM T-P-2HNB AWP
Facility	SEC.02-T4N-R63W		

### WELLPATH DATA (108 stations)

MD [ft]	Inclination [°]	Azimuth [°]	TVD [ft]	Vert Sect [ft]	North [ft]	East [ft]	Latitude	Longitude	DLS [°/100ft]	Comments
9084.00	90.090	358.830	6258.80	2717.35	2592.74	879.11	40°20'32.917"N	104°24'02.219"W	1.07	
9179.00	91.020	358.750	6257.88	2809.93	2687.71	877.10	40°20'33.855"N	104°24'02.245"W	0.98	
9273.00	92.430	359.970	6255.06	2901.70	2781.66	876.05	40°20'34.783"N	104°24'02.258"W	1.98	
9368.00	90.920	0.750	6252.28	2994.79	2876.61	876.65	40°20'35.722"N	104°24'02.250"W	1.79	
9463.00	89.450	359.730	6251.97	3087.88	2971.61	877.05	40°20'36.661"N	104°24'02.245"W	1.88	
9558.00	89.750	0.830	6252.63	3180.98	3066.60	877.51	40°20'37.599"N	104°24'02.239"W	1.20	
9653.00	89.000	0.390	6253.67	3274.19	3161.59	878.52	40°20'38.538"N	104°24'02.226"W	0.92	
9748.00	89.850	359.930	6254.62	3367.25	3256.59	878.79	40°20'39.477"N	104°24'02.223"W	1.02	
9843.00	89.660	0.500	6255.03	3460.34	3351.58	879.14	40°20'40.415"N	104°24'02.218"W	0.63	
9938.00	90.000	1.120	6255.31	3553.62	3446.57	880.49	40°20'41.354"N	104°24'02.201"W	0.74	
10033.00	90.400	0.620	6254.98	3646.91	3541.56	881.93	40°20'42.293"N	104°24'02.182"W	0.67	
10128.00	89.630	359.350	6254.96	3739.92	3636.56	881.91	40°20'43.231"N	104°24'02.182"W	1.56	
10223.00	90.520	359.060	6254.83	3832.65	3731.55	880.59	40°20'44.170"N	104°24'02.199"W	0.99	
10318.00	90.890	358.950	6253.66	3925.31	3826.53	878.94	40°20'45.109"N	104°24'02.220"W	0.41	
10413.00	91.140	359.430	6251.98	4018.03	3921.50	877.59	40°20'46.047"N	104°24'02.238"W	0.57	
10509.00	89.780	359.520	6251.21	4111.83	4017.49	876.72	40°20'46.996"N	104°24'02.249"W	1.42	
10603.00	90.220	359.360	6251.21	4203.68	4111.49	875.80	40°20'47.924"N	104°24'02.261"W	0.50	LAST BHI MWD SURVEY
10702.00	90.220	359.360	6250.83	4300.38	4210.48	874.69	40°20'48.903"N	104°24'02.275"W	0.00	PROJECTION TO BIT

### HOLE & CASING SECTIONS - Ref Wellbore: LATHAM T-P-2HNB AWP Ref Wellpath: LATHAM T-P-2HNB AWP

String/Diameter	Start MD [ft]	End MD [ft]	Interval [ft]	Start TVD [ft]	End TVD [ft]	Start N/S [ft]	Start E/W [ft]	End N/S [ft]	End E/W [ft]
9.625in Casing Surface	17.00	751.00	734.00	17.00	750.96	0.00	0.00	6.13	2.32
8.75in Open Hole	798.00	6715.00	5917.00	797.96	6259.23	5.96	2.21	224.20	869.58
7in Casing Intermediate	17.00	6661.00	6644.00	17.00	6254.14	0.00	0.00	170.46	868.56
6.125in Open Hole	6715.00	10702.00	3987.00	6259.23	6250.83	224.20	869.58	4210.48	874.69



# Actual Wellpath Report

LATHAM T-P-2HNB AWP

Page 6 of 7



## REFERENCE WELLPATH IDENTIFICATION

Operator	BONANZA CREEK OIL COMPANY	Slot	SLOT#06 LATHAM T-P-2HNB (371'FSL & 2238'FEL,SEC.2)
Area	COLORADO	Well	LATHAM T-P-2HNB
Field	WELD COUNTY	Wellbore	LATHAM T-P-2HNB AWP
Facility	SEC.02-T4N-R63W		

## TARGETS

Name	MD [ft]	TVD [ft]	North [ft]	East [ft]	Grid East [US ft]	Grid North [US ft]	Latitude	Longitude	Shape
LATHAM 034-K31-2HC SECTION 2		0.00	-43.72	44.61	3305639.87	1366858.20	40°20'06.864"N	104°24'12.996"W	polygon
LATHAM 034-K31-2HC TARGET		6207.00	153.01	-147.76	3305445.10	1367052.53	40°20'08.808"N	104°24'15.480"W	point
LATHAM T-P-2HNB BHL From Plat (470'FNL & 1290'FEL,SEC.02)		6207.00	4462.79	886.39	3306425.84	1371374.57	40°20'51.396"N	104°24'02.124"W	point
LATHAM T-P-2HNB BHL Rev-2 From Plat (470'FNL & 1290'FEL,SEC.02)		6269.00	4462.79	886.39	3306425.85	1371374.57	40°20'51.396"N	104°24'02.124"W	point
LATHAM T-P-2HNB TARGET		6269.00	189.46	872.60	3306464.89	1367101.58	40°20'09.168"N	104°24'02.304"W	point
LATHAM 034-K31-2HC HARDLINE (460' SETBACK)		6465.00	-43.72	44.61	3305639.87	1366858.20	40°20'06.864"N	104°24'12.996"W	polygon

## WELLPATH COMPOSITION - Ref Wellbore: LATHAM T-P-2HNB AWP Ref Wellpath: LATHAM T-P-2HNB AWP

Start MD [ft]	End MD [ft]	Positional Uncertainty Model	Log Name/Comment	Wellbore
17.00	6609.00	NaviTrak (Standard)	BHI/Navitrak MWD 8.75" Hole <17'-6609'>]	LATHAM T-P-2HNB AWP
6609.00	10603.00	NaviTrak (Standard)	BHI/Navitrak MWD 6.125" Hole <6657'-9179'>	LATHAM T-P-2HNB AWP
10603.00	10702.00	Blind Drilling (std)	Projection to bit	LATHAM T-P-2HNB AWP





**Actual Wellpath Report**  
**LATHAM T-P-2HNB AWP**  
Page 7 of 7



REFERENCE WELLPATH IDENTIFICATION			
Operator	BONANZA CREEK OIL COMPANY	Slot	SLOT#06 LATHAM T-P-2HNB (371'FSL & 2238'FEL,SEC.2)
Area	COLORADO	Well	LATHAM T-P-2HNB
Field	WELD COUNTY	Wellbore	LATHAM T-P-2HNB AWP
Facility	SEC.02-T4N-R63W		

WELLPATH COMMENTS				
MD [ft]	Inclination [°]	Azimuth [°]	TVD [ft]	Comment
240.00	0.490	9.620	240.00	FIRST BHI MWD SURVEY
10603.00	90.220	359.360	6251.21	LAST BHI MWD SURVEY
10702.00	90.220	359.360	6250.83	PROJECTION TO BIT