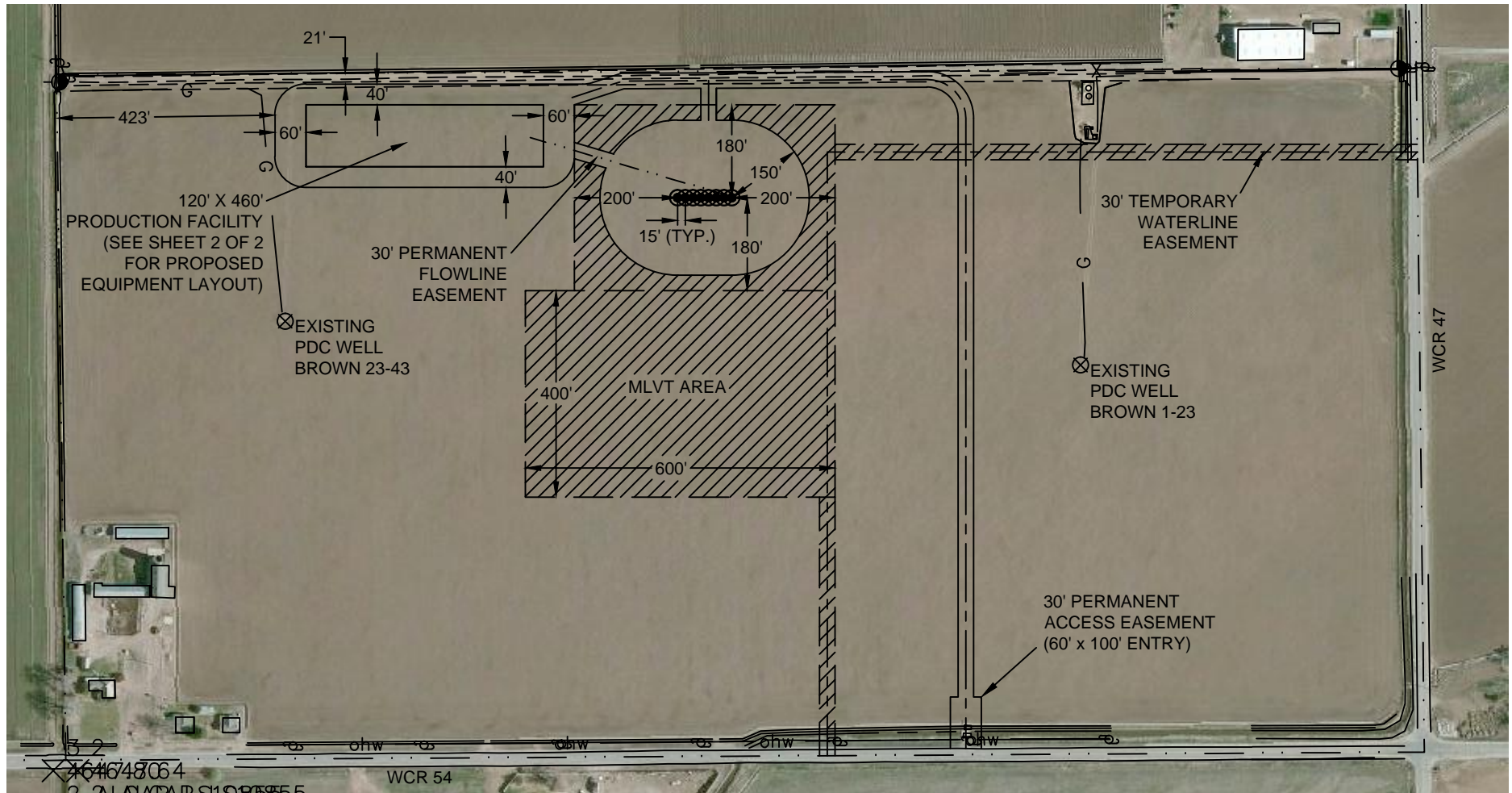




Washburn Land Surveying  
www.WashburnSurveying.com  
970-232-9645

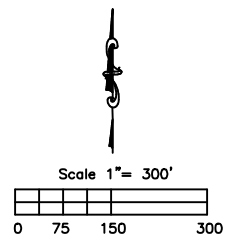
# PROPOSED SCALED FACILITY BROWN 5N65W23D PAD

SECTION: 23  
TOWNSHIP: 5N  
RANGE: 65W  
6TH P.M.  
WELD COUNTY, CO



RECLAIMED AREA(S)

TOTAL DISTURBED AREA OF LOCATION:  $\pm 15.5$  ACRES  
TOTAL SIZE OF LOCATION AFTER RECLAMATION:  $\pm 6.5$  ACRES

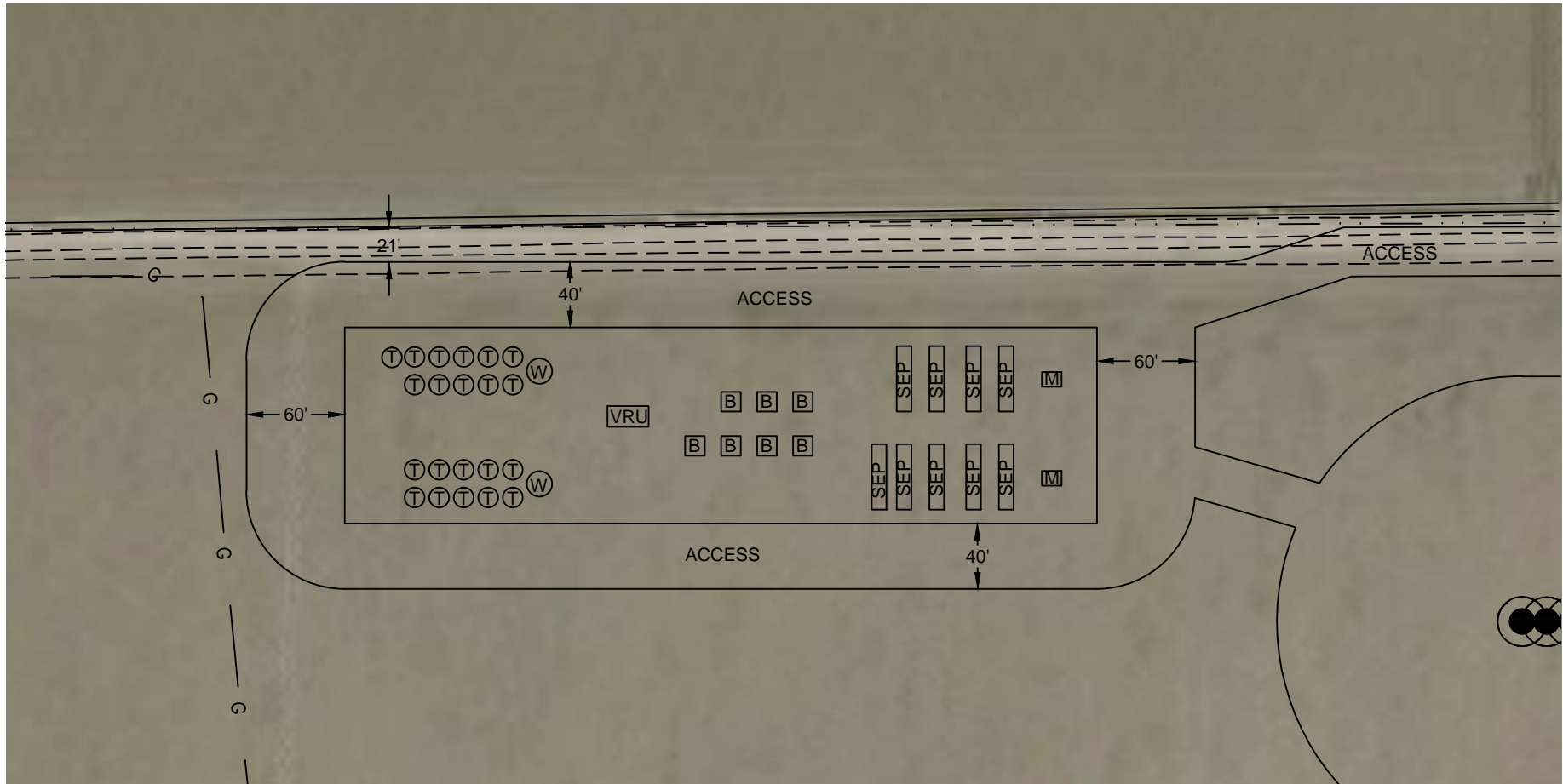




Washburn Land Surveying  
www.WashburnSurveying.com  
970-232-9645

# PROPOSED SCALED FACILITY BROWN 5N65W23D PAD

SECTION: 23  
TOWNSHIP: 5N  
RANGE: 65W  
6TH P.M.  
WELD COUNTY, CO



## LEGEND:

⊕ TANK BATTERY

⊕ WATER VAULT

⊕ METER

⊕ BURNER/ECD

VRU VAPOR RECOVERY UNIT

SEP SEPARATOR



Scale 1" = 100'

