

LEGEND:

 PROPOSED LOCATION

REV: 1 11-02-16 K.B. (TEMPLATE UPDATE)



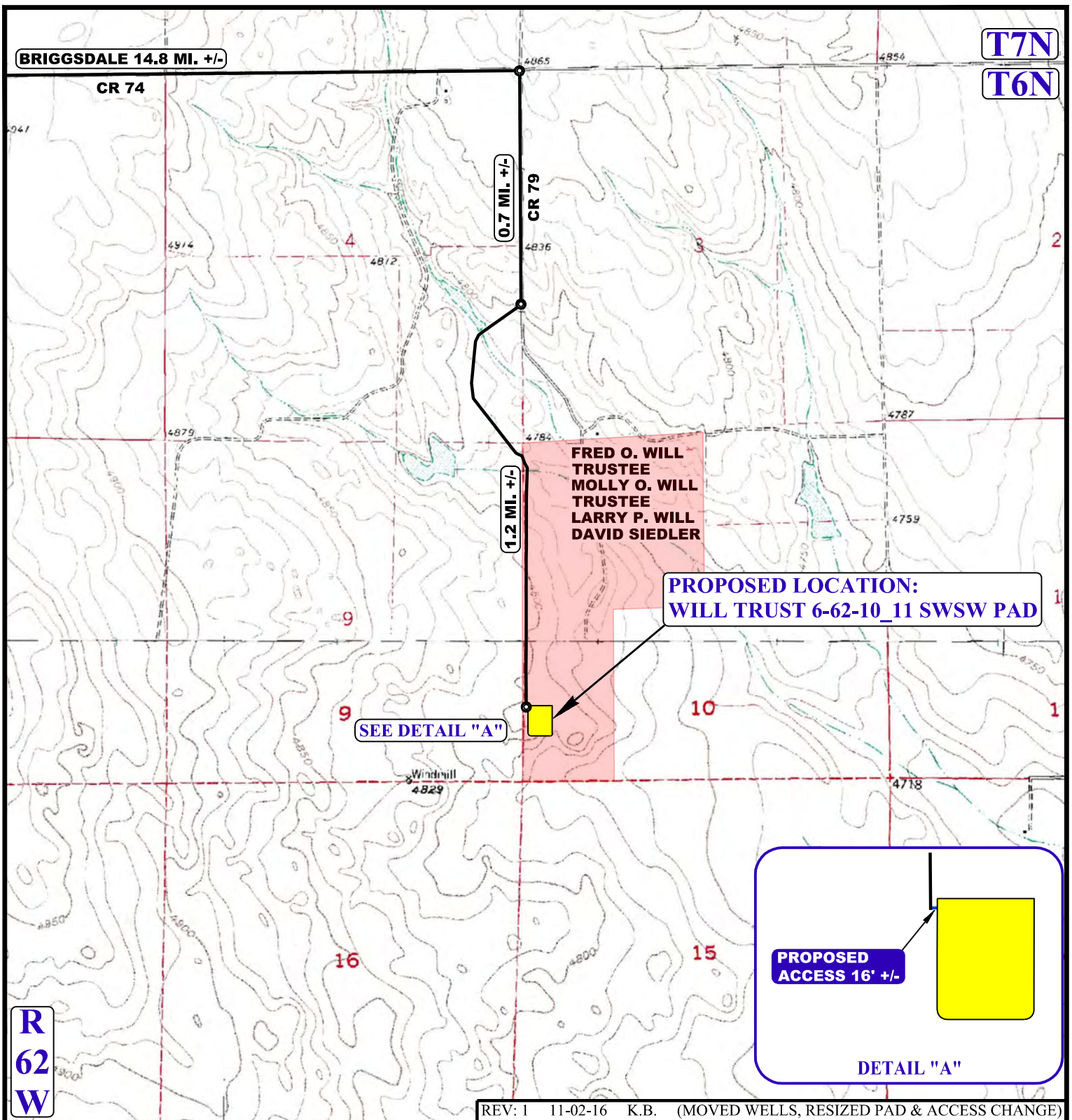
BILL BARRETT CORPORATION

WILL TRUST 6-62-10_11 SWSW PAD
SW 1/4 SW 1/4, SECTION 10, T6N, R62W, 6th P.M.
WELD COUNTY, COLORADO

SURVEYED BY	D.S.	10-17-16	SCALE
DRAWN BY	C.D.L.	03-21-16	1 : 100,000
ACCESS ROAD MAP			TOPO A



UELS, LLC
Corporate Office * 85 South 200 East
Vernal, UT 84078 * (435) 789-1017



NOTE: PARCEL DATA SHOWN HAS BEEN OBTAINED FROM VARIOUS SOURCES AND SHOULD BE USED FOR MAPPING, GRAPHIC AND PLANNING PURPOSES ONLY. NO WARRANTY IS MADE BY UINAH ENGINEERING AND LAND SURVEYING (UELS) FOR ACCURACY OF THE PARCEL DATA.

LEGEND:

— EXISTING ROAD

- - - PROPOSED ROAD

UINAH
ENGINEERING & LAND SURVEYING

UELS, LLC
Corporate Office * 85 South 200 East
Vernal, UT 84078 * (435) 789-1017

BILL BARRETT CORPORATION

WILL TRUST 6-62-10_11 SWSW PAD
SW 1/4 SW 1/4, SECTION 10, T6N, R62W, 6th P.M.
WELD COUNTY, COLORADO

SURVEYED BY	D.S.	10-17-16	SCALE
DRAWN BY	C.D.L.	03-21-16	1 : 24,000

ACCESS ROAD MAP **TOPO B**