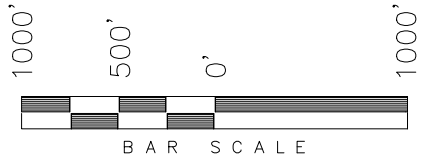


**WHITING OIL & GAS CORP.**

WELL LOCATION, RAZOR FED 29L-3202,  
 LOCATED AS SHOWN IN THE NW 1/4  
 SW 1/4 OF SECTION 29, T10N, R58W,  
 6th P.M. WELD COUNTY, COLORADO.



◆ = SECTION CORNERS LOCATED

**NOTES:**

1. Bearings are based on Global Positioning Satellite Observations.
2. G.P.S. Operator: C.D. Slauch, (PDOP) = 1.5
3. Monument Coordinates are Reported in NAD 83.

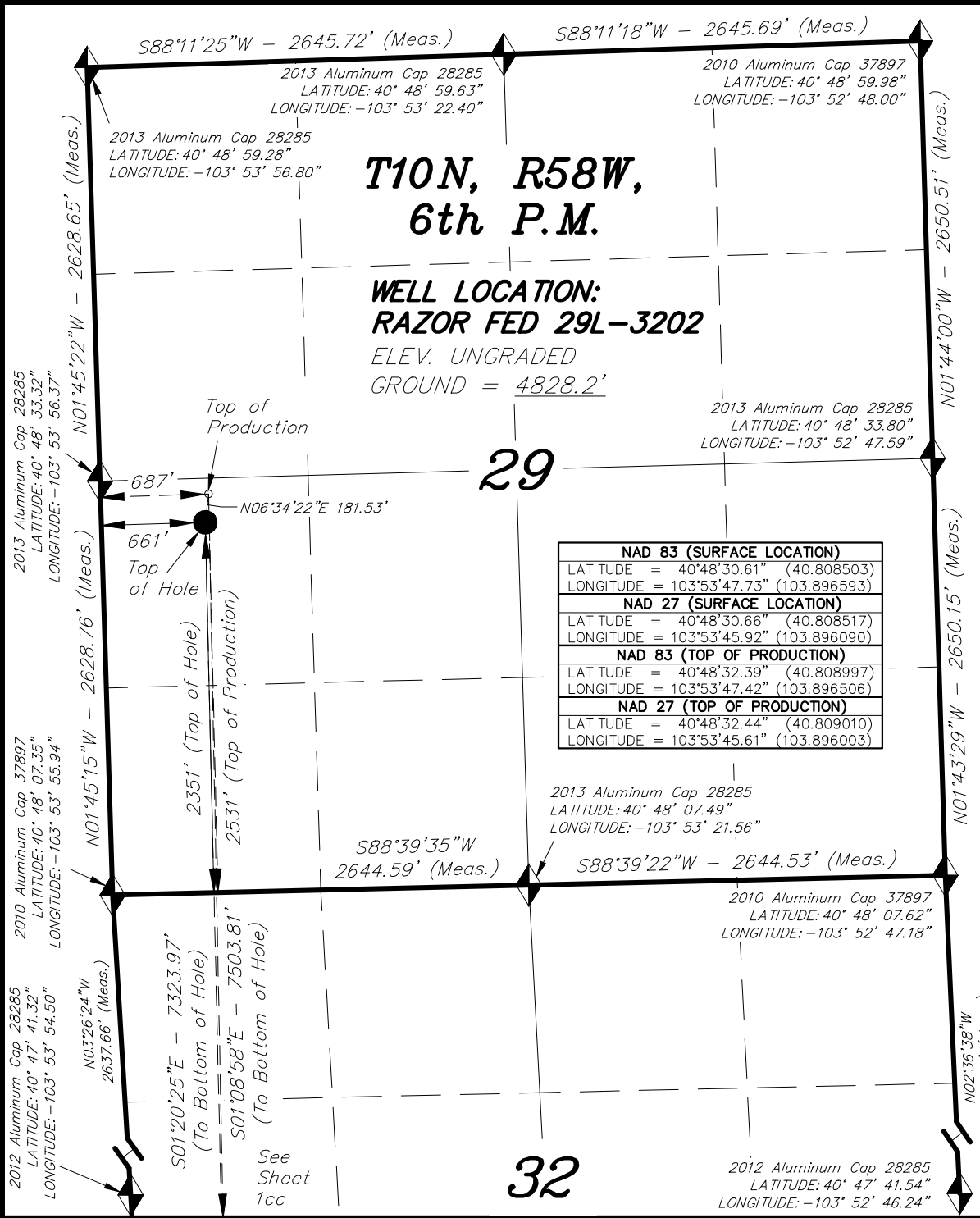
BASIS OF ELEV; Elevations are based on an N.G.S. OPUS Correction. LOCATION: LAT. 40°46'03.41" LONG. 103°46'26.97" (Tristate Aluminum Cap) NAVD 88 Elev. 4750.22'

THIS IS TO CERTIFY THAT THE ABOVE PLAT WAS PREPARED FROM FIELD NOTES OF REAL SURVEYS MADE BY ME OR UNDER MY SUPERVISION. THE LOCATION HAS BEEN STAKED ON THE GROUND AS SHOWN ON THE PLAT, AND THAT THE SAME ARE TRUE AND CORRECT TO THE BEST OF MY KNOWLEDGE AND BELIEF. S 07-12-16 # 30125

*[Signature]*  
 REGISTERED LAND SURVEYOR  
 REGISTRATION NO. 30125  
 STATE OF COLORADO

**TRI STATE LAND SURVEYING & CONSULTING**  
 180 NORTH VERNAL AVE. - VERNAL, UTAH 84078  
 (435) 781-2501

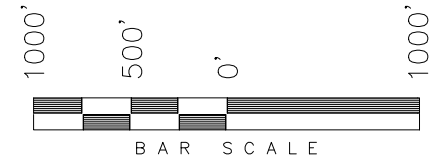
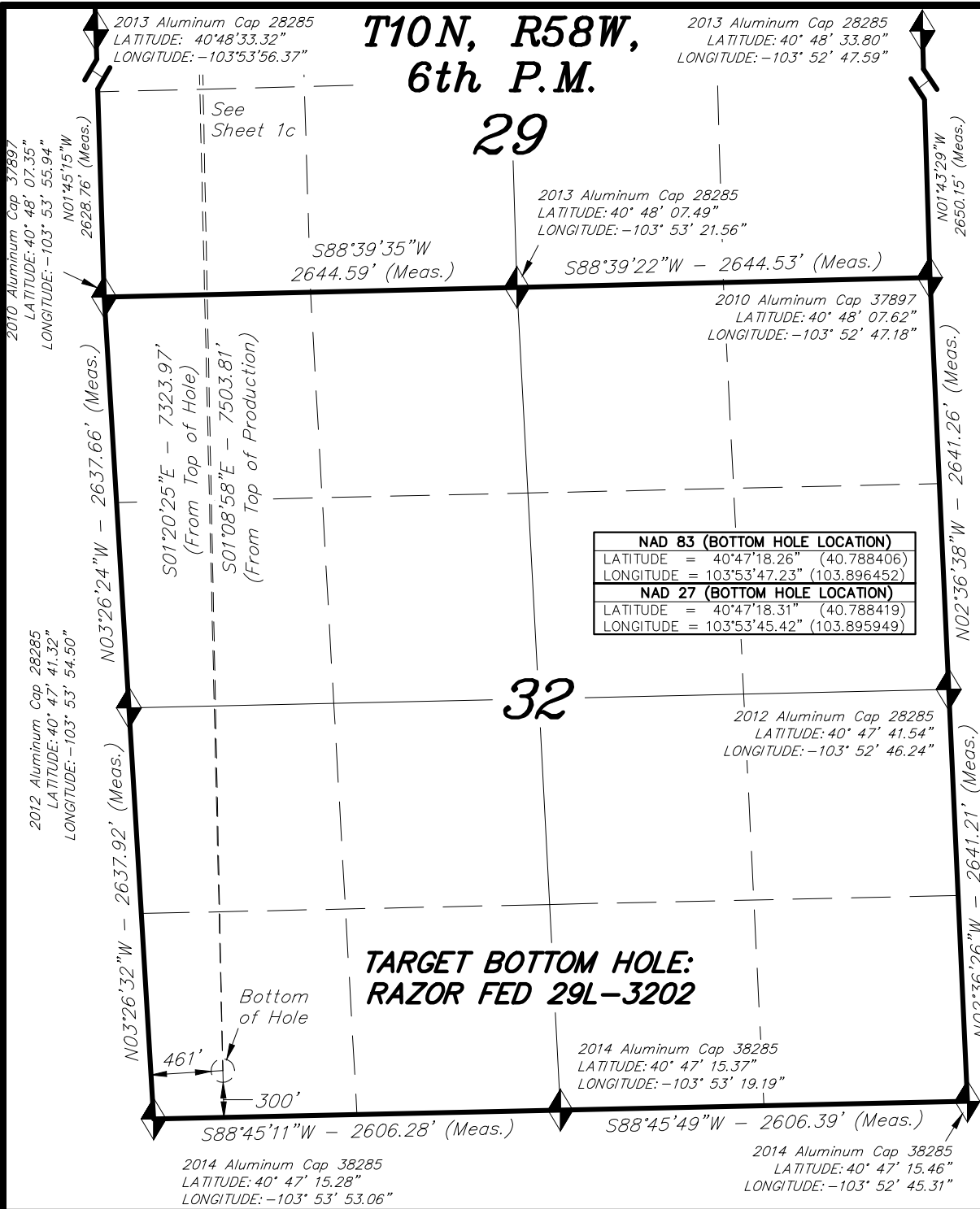
DATE SURVEYED: 06-09-16	SURVEYED BY: C.D.S.	SHEET  <b>1c</b>
DATE DRAWN: 07-12-16	DRAWN BY: F.T.M.	
REVISED:	SCALE: 1" = 1000'	



**T10N, R58W,  
6th P.M.  
29**

**WHITING OIL & GAS CORP.**

TARGET BOTTOM HOLE,  
RAZOR FED 29L-3202, LOCATED  
AS SHOWN IN THE SW 1/4 SW 1/4  
OF SECTION 32, T10N, R58W, 6th  
P.M. WELD COUNTY, COLORADO.



◆ = SECTION CORNERS LOCATED

**NOTES:**

1. Bearings are based on Global Positioning Satellite Observations.
2. Monument Coordinates are Reported in NAD 83.

THIS IS TO CERTIFY THAT THE ABOVE PLAT WAS PREPARED FROM FIELD NOTES OF REAL SURVEYS MADE BY ME OR UNDER MY SUPERVISION. THE LOCATION HAS BEEN STAKED ON THE GROUND AS SHOWN ON THE PLAT, AND THAT THE SAME ARE TRUE AND CORRECT TO THE BEST OF MY KNOWLEDGE AND BELIEF. 07-12-16

*[Signature]*  
30125  
REGISTERED LAND SURVEYOR  
REGISTRATION NO. 30125  
STATE OF COLORADO  
LAND SURVEYOR

**TRI STATE LAND SURVEYING & CONSULTING**

180 NORTH VERNAL AVE. - VERNAL, UTAH 84078  
(435) 781-2501

DATE SURVEYED: 06-09-16	SURVEYED BY: C.D.S.	SHEET  1cc
DATE DRAWN: 07-12-16	DRAWN BY: F.T.M.	
REVISED:	SCALE: 1" = 1000'	