

# HALLIBURTON

iCem<sup>®</sup> Service

## **TEP ROCKY MOUNTAIN LLC**

**For: Lynn Cass/Abe Alexander/Mark Mewshaw**

Date: Monday, August 22, 2016

**RU 412-7 Surface**

API# 05-045-23230-00

Sincerely,

**Grand Junction Cement Engineering**

## 1.0 Real-Time Job Summary

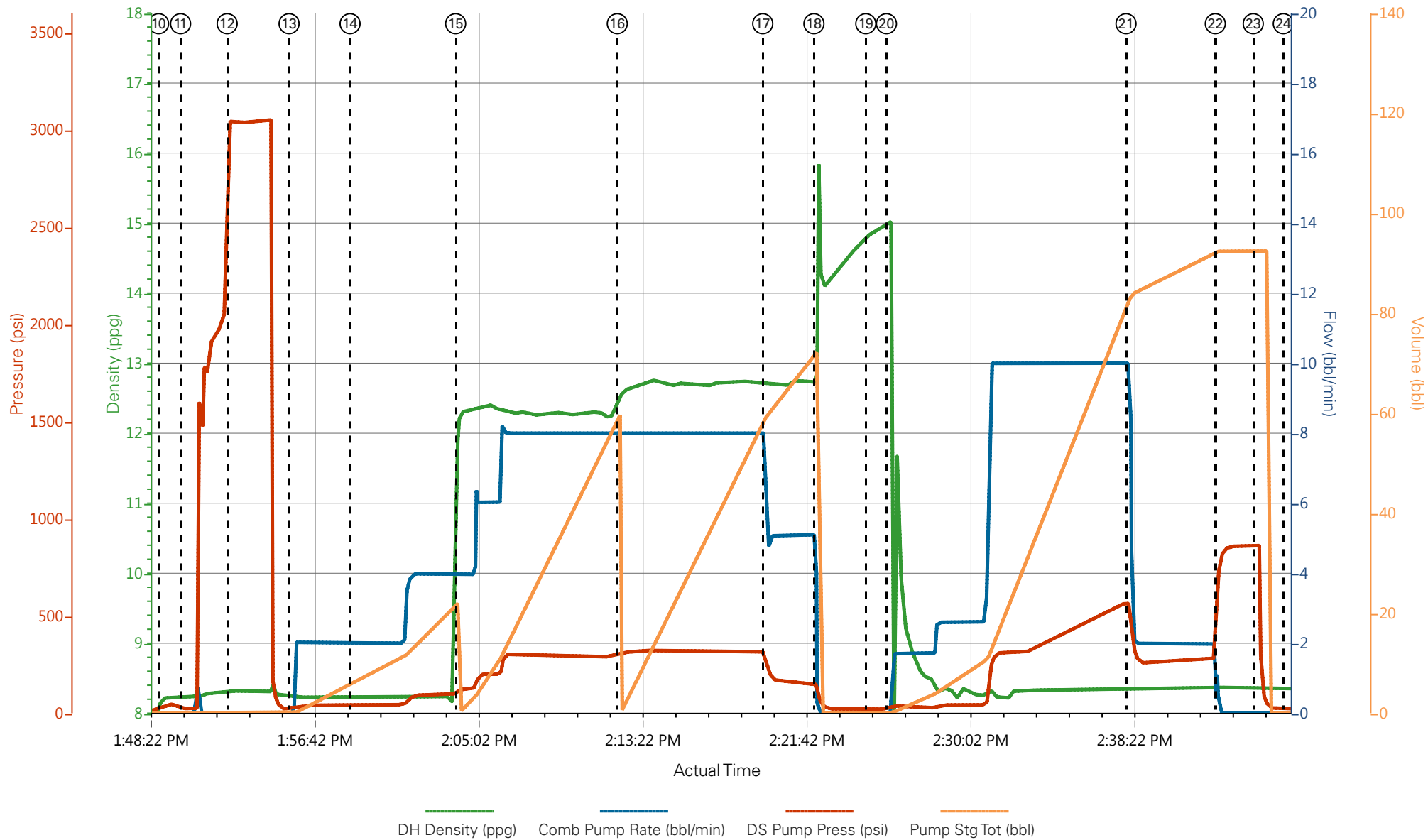
## 1.1 Job Event Log

Type	Seq. No.	Graph Label	Date	Time	Source	DH Density (ppg)	Comb Pump Rate (bbl/min)	DS Pump Press (psi)	Pump Stg Tot (bbl)	Comments
Event	1	Call Out	8/22/2016	02:00:00	USER					REQUESTED ON LOCATION @ 08:00
Event	2	Pre-Convoy Safety Meeting	8/22/2016	04:45:00	USER					ALL HES PRESENT
Event	3	Crew Leave Yard	8/22/2016	05:00:00	USER					1 HT 400 PUMP TRUCK E8, 1 660 BULK TRUCK, 1 550 SERVICE PICKUP
Event	4	Arrive At Loc	8/22/2016	07:00:00	USER					RIG RUNNING A WIPER TRIP
Event	5	Assessment Of Location Safety Meeting	8/22/2016	07:15:00	USER					MET WITH COMP REP, AND WENT OVER NUMBERS AND JOB PROCEDURE. WALKED AROUND LOCATION AND COLLECTED WATER SAMPLE (PH- 7.5, CHLORIDES- 0, TEMP- 64F). COMP REP WAS OFFERED SDS FOR ALL CHEMICLES USED BY HES.
Event	6	Spot Equipment	8/22/2016	12:00:00	USER					1 HT 400 PUMP TRUCK E8, 1 660 BULK TRUCK, 1 550 SERVICE PICKUP
Event	7	Pre-Rig Up Safety Meeting	8/22/2016	12:15:00	USER					ALL HES PRESENT
Event	8	Rig-Up Equipment	8/22/2016	12:30:00	USER					1 HT 400 PUMP TRUCK E8, 1 660 BULK TRUCK, 1 550 SERVICE PICKUP
Event	9	Pre-Job Safety Meeting	8/22/2016	13:47:06	USER					ALL HES AND RIG CREWS PRESENT

Event	10	Start Job	8/22/2016	13:48:55	USER					TD 1185', TP 1179.36', SJ 45.98', OH 13.5'', CSG 9 5/8" 32.3# H-40 SET @1175.38', MUD 9.5 PPG
Event	11	Prime Lines	8/22/2016	13:50:02	USER	8.33		55	2	FRESH WATER
Event	12	Test Lines	8/22/2016	13:52:24	COM5			3095		PRESSURE HELD
Event	13	Pump H2O Spacer	8/22/2016	13:55:33	COM5	8.33	4.0	95	20	FRESH WATER
Event	14	Check weight	8/22/2016	13:58:39	COM5					WEIGHT VERIFIED VIA PRESSUREIZED MUD SCALES
Event	15	Pump Lead Cement	8/22/2016	14:04:01	COM5	12.3	8.0	320	55.1	130 SKS OF VARICEM CMT 12.3 PPG, 2.38 FT3/SK, 13.77 GAL/SK
Event	16	Pump Tail Cement	8/22/2016	14:12:14	COM5	12.7	8.0	350	65.8	175 SKS VARICEM CMT 12.78 PPG, 2.11 FT3/SK, 11.78 GAL/SK
Event	17	Slow Rate	8/22/2016	14:19:37	USER					SLOWED TO END CMT
Event	18	Shutdown	8/22/2016	14:22:14	USER					END OF CMT
Event	19	Drop Top Plug	8/22/2016	14:24:52	USER					VERIFIED BY FLAG INDICATOR
Event	20	Pump Displacement	8/22/2016	14:25:55	COM5	8.33	10	585	79.6	FRESH WATER
Event	21	Slow Rate	8/22/2016	14:38:06	USER	8.33	2.0	285	10	SLOWED TO BUMP PLUG
Event	22	Bump Plug	8/22/2016	14:42:38	COM5	8.33	2.0	890	89.6	PLUG BUMPED
Event	23	Check Floats	8/22/2016	14:44:33	USER					FLOATS HELD .5 BBL FLOW BACK
Event	24	End Job	8/22/2016	14:46:05	COM5					18 BBL CMT TO SURFACE USED 40 LBS SUGAR
Event	26	Post-Job Safety Meeting (Pre Rig-Down)	8/22/2016	15:00:00	USER					ALL HES PRESENT

Event	27	Rig-Down Completed	8/22/2016	16:30:00	USER	NO INJURIES TO REPORT
Event	28	Pre-Convoy Safety Meeting	8/22/2016	16:45:00	USER	ALL HES PRESENT
Event	29	Crew Leave Location	8/22/2016	17:00:00	USER	THANK YOU FOR CHOOSING HALLIBURTON CEMENT, DUSTIN HYDE AND CREW

# TERRA - RU 412-7 - 9 5/8" SURFACE



- |   |                             |                    |                      |                 |   |
|---|-----------------------------|--------------------|----------------------|-----------------|---|
| ① Call Out                              | ⑥ Spot Equipment            | ⑪ Prime Lines      | ⑯ Pump Tail Cement   | 21 Slow Rate    | 26 Post-Job Safety Meeting (Pre Rig-Down) |
| ② Pre-Convoy Safety Meeting             | ⑦ Pre-Rig Up Safety Meeting | ⑫ Test Lines       | ⑰ Slow Rate          | 22 Bump Plug    | 27 Rig-Down Completed                     |
| ③ Crew Leave Yard                       | ⑧ Rig-Up Equipment          | ⑬ Pump Spacer 1    | ⑱ Shutdown           | 23 Check Floats | 28 Pre-Convoy Safety Meeting              |
| ④ Arrive At Loc                         | ⑨ Pre-Job Safety Meeting    | ⑭ Check weight     | ⑲ Drop Top Plug      | 24 Other        | 29 Crew Leave Location                    |
| ⑤ Assessment Of Location Safety Meeting | ⑩ Start Job                 | ⑮ Pump Lead Cement | 20 Pump Displacement | 25 End Job      |   |

▼ **HALLIBURTON** | iCem® Service

Created: 2016-08-22 08:43:31, Version: 4.2.393

Edit

Customer: TEP ROCKY MOUNTAIN LLC

Job Date: 8/22/2016

Well: RU 412-7

Representative: JARVIS ABBEY

Sales Order #: 903496132

ELITE 8: ADAM ANGELO

# TERRA - RU 412-7 - 9 5/8" SURFACE

