

EXTRACTION OIL & GAS

Location: COLORADO Slot: SLOT#25 LAUNER 13(630'FSL & 459'FEL,SEC.26)
Field: WELD COUNTY (NAD83/TRUE NORTH) Well: LAUNER 13
Facility: SEC.26-T07N-R67W Wellbore: LAUNER 13 PWB

Plot reference wellpath is LAUNER 13 (REV-B.0) PWP

True vertical depths are referenced to RIG (RKB)	Grid System: NAD83 / Lambert Colorado SP, Northern Zone (501), US feet
Measured depths are referenced to RIG (RKB)	North Reference: True north
RIG (RKB) to Mean Sea Level: 4955 feet	Scale: True distance
Mean Sea Level to Mud line (At Slot: SLOT#25 LAUNER 13(630'FSL & 459'FEL,SEC.26)): 0 feet	Depths are in feet
Coordinates are in feet referenced to Slot	Created by: painsetr on 10/7/2014

Location Information

Facility Name			Grid East (US ft)	Grid North (US ft)	Latitude	Longitude
SEC.26-T07N-R67W			3179860.101	1444245.219	40°33'03.784"N	104°51'09.932"W
Slot	Local N (ft)	Local E (ft)	Grid East (US ft)	Grid North (US ft)	Latitude	Longitude
SLOT#25 LAUNER 13(630'FSL & 459'FEL,SEC.26)	-4163.14	42.22	3179932.701	1440082.631	40°32'22.646"N	104°51'09.385"W
RIG (RKB) to Mud line (At Slot: SLOT#25 LAUNER 13(630'FSL & 459'FEL,SEC.26))					4955ft	
Mean Sea Level to Mud line (At Slot: SLOT#25 LAUNER 13(630'FSL & 459'FEL,SEC.26))					0ft	
RIG (RKB) to Mean Sea Level					4955ft	

Targets

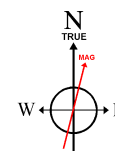
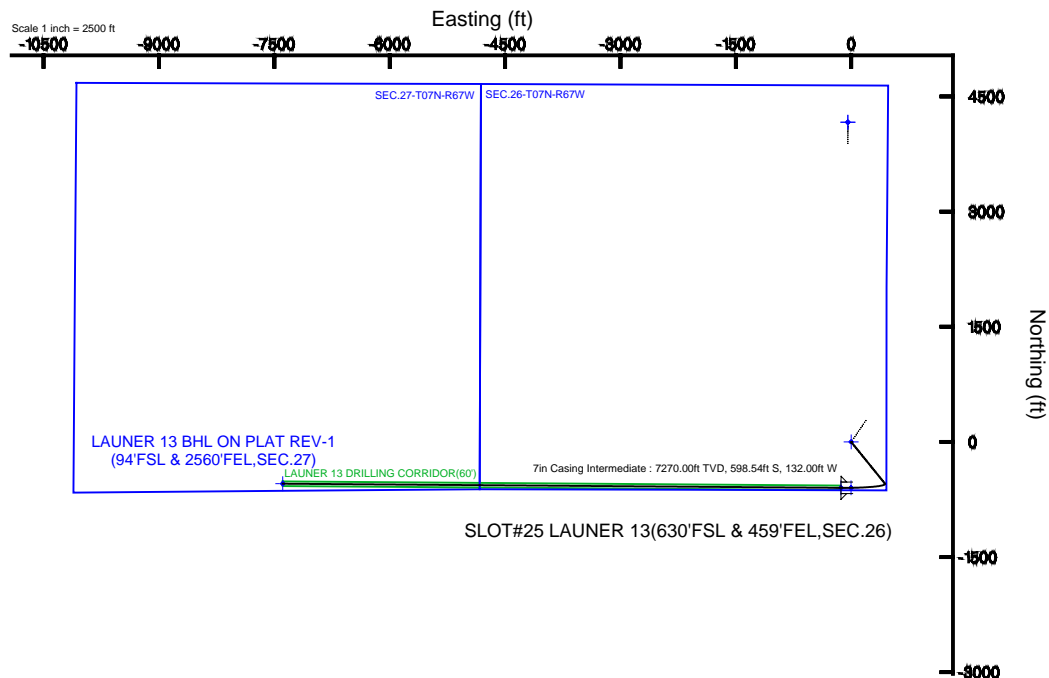
Name	MD (ft)	TVD (ft)	Local N (ft)	Local E (ft)	Grid East (US ft)	Grid North (US ft)	Latitude	Longitude
SEC.26-T07N-R67W		-17.00	4163.10	-42.24	3179860.07	1444245.18	40°33'03.784"N	104°51'09.932"W
SEC.27-T07N-R67W		-17.00	4163.10	-42.24	3179860.07	1444245.18	40°33'03.784"N	104°51'09.932"W
LAUNER 13 BHL ON PLAT REV-1(94'FSL & 2560'FEL,SEC.27)	14901.40	7270.00	-544.64	-7390.46	3172546.65	1439484.06	40°32'17.254"N	104°52'45.106"W
LAUNER 13 DRILLING CORRIDOR(60')		7270.00	0.00	0.00	3179932.70	1440082.63	40°32'22.646"N	104°51'09.385"W
LAUNER 13 LANDING		7270.00	-598.58	-1.11	3179935.96	1439484.08	40°32'16.732"N	104°51'09.400"W
LAUNER 13 LANDING REV-1	7642.74	7270.00	-598.54	-132.00	3179905.08	1439483.16	40°32'16.732"N	104°51'11.095"W

Survey Program

Start MD (ft)	End MD (ft)	Tool	Model	Log Name/Comment	Wellbore
24.00	16000.00	NaviTrak	NaviTrak (Standard)		LAUNER 13 PWB

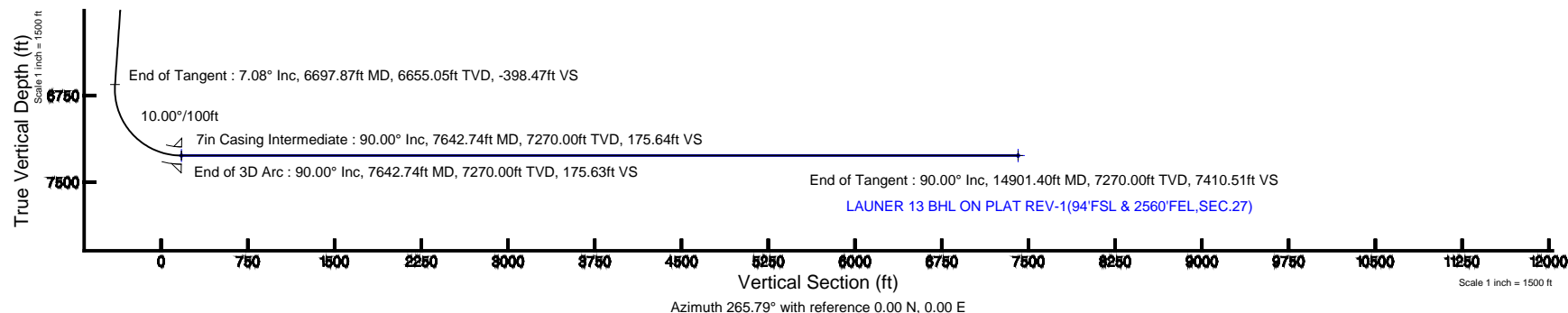
Well Profile Data

Design Comment	MD (ft)	Inc (°)	Az (°)	TVD (ft)	Local N (ft)	Local E (ft)	DLS (°/100ft)	VS (ft)
Tie On	24.00	0.000	141.043	24.00	0.00	0.00	0.00	0.00
End of Tangent	850.00	0.000	141.043	850.00	0.00	0.00	0.00	0.00
End of Build	1204.12	7.082	141.043	1203.22	-17.00	13.74	2.00	-12.46
End of Tangent	6697.87	7.082	141.043	6655.05	-543.73	439.62	0.00	-398.47
End of 3D Arc	7642.74	90.000	270.425	7270.00	-598.54	-132.00	10.00	175.63
End of Tangent	14901.40	90.000	270.425	7270.00	-544.64	-7390.46	0.00	7410.51



BGGM (1945.0 to 2016.0) Dip: 67.04° Field: 52816.5 nT
Magnetic North is 8.59 degrees East of True North (at 7/24/2014)

To correct azimuth from Magnetic to True add 8.59 degrees





Planned Wellpath Report

LAUNER 13 (REV-B.0) PWP

Page 1 of 8



REFERENCE WELLPATH IDENTIFICATION

Operator	EXTRACTION OIL & GAS	Slot	SLOT#25 LAUNER 13(630'FSL & 459'FEL,SEC.26)
Area	COLORADO	Well	LAUNER 13
Field	WELD COUNTY (NAD83/TRUE NORTH)	Wellbore	LAUNER 13 PWB
Facility	SEC.26-T07N-R67W		

REPORT SETUP INFORMATION

Projection System	NAD83 / Lambert Colorado SP, Northern Zone (501), US feet	Software System	WellArchitect® 4.0.0
North Reference	True	User	Painsetr
Scale	0.99997	Report Generated	10/7/2014 at 2:15:34 PM
Convergence at slot	n/a	Database/Source file	WA_Denver/LAUNER_13_PWB.xml

WELLPATH LOCATION

	Local coordinates		Grid coordinates		Geographic coordinates	
	North[ft]	East[ft]	Easting[US ft]	Northing[US ft]	Latitude	Longitude
Slot Location	-4163.14	42.22	3179932.70	1440082.63	40°32'22.646"N	104°51'09.385"W
Facility Reference Pt			3179860.10	1444245.22	40°33'03.784"N	104°51'09.932"W
Field Reference Pt			3185481.27	1419166.81	40°28'55.560"N	104°49'59.556"W

WELLPATH DATUM

Calculation method	Minimum curvature	RIG (RKB) to Facility Vertical Datum	4955.00ft
Horizontal Reference Pt	Slot	RIG (RKB) to Mean Sea Level	4955.00ft
Vertical Reference Pt	RIG (RKB)	RIG (RKB) to Mud Line at Slot (SLOT#25 LAUNER 13(630'FSL & 459'FEL,SEC.26))	4955.00ft
MD Reference Pt	RIG (RKB)	Section Origin	N 0.00, E 0.00 ft
Field Vertical Reference	Mean Sea Level	Section Azimuth	265.79°



Planned Wellpath Report

LAUNER 13 (REV-B.0) PWP

Page 2 of 8



REFERENCE WELLPATH IDENTIFICATION

Operator	EXTRACTION OIL & GAS	Slot	SLOT#25 LAUNER 13(630'FSL & 459'FEL,SEC.26)
Area	COLORADO	Well	LAUNER 13
Field	WELD COUNTY (NAD83/TRUE NORTH)	Wellbore	LAUNER 13 PWB
Facility	SEC.26-T07N-R67W		

WELLPATH DATA (155 stations) † = interpolated/extrapolated station

MD [ft]	Inclination [°]	Azimuth [°]	TVD [ft]	Vert Sect [ft]	North [ft]	East [ft]	DLS [°/100ft]	Comments
0.00†	0.000	141.043	0.00	0.00	0.00	0.00	0.00	
24.00	0.000	141.043	24.00	0.00	0.00	0.00	0.00	Tie On
124.00†	0.000	141.043	124.00	0.00	0.00	0.00	0.00	
224.00†	0.000	141.043	224.00	0.00	0.00	0.00	0.00	
324.00†	0.000	141.043	324.00	0.00	0.00	0.00	0.00	
424.00†	0.000	141.043	424.00	0.00	0.00	0.00	0.00	
524.00†	0.000	141.043	524.00	0.00	0.00	0.00	0.00	
624.00†	0.000	141.043	624.00	0.00	0.00	0.00	0.00	
724.00†	0.000	141.043	724.00	0.00	0.00	0.00	0.00	
824.00†	0.000	141.043	824.00	0.00	0.00	0.00	0.00	
850.00	0.000	141.043	850.00	0.00	0.00	0.00	0.00	End of Tangent
924.00†	1.480	141.043	923.99	-0.54	-0.74	0.60	2.00	
1024.00†	3.480	141.043	1023.89	-3.01	-4.11	3.32	2.00	
1124.00†	5.480	141.043	1123.58	-7.46	-10.18	8.23	2.00	
1204.12	7.082	141.043	1203.22	-12.46	-17.00	13.74	2.00	End of Build
1224.00†	7.082	141.043	1222.95	-13.85	-18.90	15.28	0.00	
1324.00†	7.082	141.043	1322.18	-20.88	-28.49	23.04	0.00	
1424.00†	7.082	141.043	1421.42	-27.91	-38.08	30.79	0.00	
1524.00†	7.082	141.043	1520.66	-34.93	-47.67	38.54	0.00	
1624.00†	7.082	141.043	1619.90	-41.96	-57.25	46.29	0.00	
1724.00†	7.082	141.043	1719.13	-48.99	-66.84	54.05	0.00	
1824.00†	7.082	141.043	1818.37	-56.01	-76.43	61.80	0.00	
1924.00†	7.082	141.043	1917.61	-63.04	-86.02	69.55	0.00	
2024.00†	7.082	141.043	2016.84	-70.07	-95.61	77.30	0.00	
2124.00†	7.082	141.043	2116.08	-77.09	-105.19	85.05	0.00	
2224.00†	7.082	141.043	2215.32	-84.12	-114.78	92.81	0.00	
2324.00†	7.082	141.043	2314.55	-91.15	-124.37	100.56	0.00	
2424.00†	7.082	141.043	2413.79	-98.17	-133.96	108.31	0.00	
2524.00†	7.082	141.043	2513.03	-105.20	-143.54	116.06	0.00	
2624.00†	7.082	141.043	2612.26	-112.22	-153.13	123.81	0.00	



Planned Wellpath Report

LAUNER 13 (REV-B.0) PWP

Page 3 of 8



REFERENCE WELLPATH IDENTIFICATION

Operator	EXTRACTION OIL & GAS	Slot	SLOT#25 LAUNER 13(630'FSL & 459'FEL,SEC.26)
Area	COLORADO	Well	LAUNER 13
Field	WELD COUNTY (NAD83/TRUE NORTH)	Wellbore	LAUNER 13 PWB
Facility	SEC.26-T07N-R67W		

WELLPATH DATA (155 stations) † = interpolated/extrapolated station

MD [ft]	Inclination [°]	Azimuth [°]	TVD [ft]	Vert Sect [ft]	North [ft]	East [ft]	DLS [°/100ft]	Comments
2724.00†	7.082	141.043	2711.50	-119.25	-162.72	131.57	0.00	
2824.00†	7.082	141.043	2810.74	-126.28	-172.31	139.32	0.00	
2924.00†	7.082	141.043	2909.98	-133.30	-181.90	147.07	0.00	
3024.00†	7.082	141.043	3009.21	-140.33	-191.48	154.82	0.00	
3124.00†	7.082	141.043	3108.45	-147.36	-201.07	162.57	0.00	
3224.00†	7.082	141.043	3207.69	-154.38	-210.66	170.33	0.00	
3324.00†	7.082	141.043	3306.92	-161.41	-220.25	178.08	0.00	
3424.00†	7.082	141.043	3406.16	-168.44	-229.83	185.83	0.00	
3524.00†	7.082	141.043	3505.40	-175.46	-239.42	193.58	0.00	
3624.00†	7.082	141.043	3604.63	-182.49	-249.01	201.34	0.00	
3724.00†	7.082	141.043	3703.87	-189.52	-258.60	209.09	0.00	
3824.00†	7.082	141.043	3803.11	-196.54	-268.19	216.84	0.00	
3924.00†	7.082	141.043	3902.35	-203.57	-277.77	224.59	0.00	
4024.00†	7.082	141.043	4001.58	-210.60	-287.36	232.34	0.00	
4124.00†	7.082	141.043	4100.82	-217.62	-296.95	240.10	0.00	
4224.00†	7.082	141.043	4200.06	-224.65	-306.54	247.85	0.00	
4324.00†	7.082	141.043	4299.29	-231.67	-316.12	255.60	0.00	
4424.00†	7.082	141.043	4398.53	-238.70	-325.71	263.35	0.00	
4524.00†	7.082	141.043	4497.77	-245.73	-335.30	271.10	0.00	
4624.00†	7.082	141.043	4597.00	-252.75	-344.89	278.86	0.00	
4724.00†	7.082	141.043	4696.24	-259.78	-354.48	286.61	0.00	
4824.00†	7.082	141.043	4795.48	-266.81	-364.06	294.36	0.00	
4924.00†	7.082	141.043	4894.72	-273.83	-373.65	302.11	0.00	
5024.00†	7.082	141.043	4993.95	-280.86	-383.24	309.86	0.00	
5124.00†	7.082	141.043	5093.19	-287.89	-392.83	317.62	0.00	
5224.00†	7.082	141.043	5192.43	-294.91	-402.41	325.37	0.00	
5324.00†	7.082	141.043	5291.66	-301.94	-412.00	333.12	0.00	
5424.00†	7.082	141.043	5390.90	-308.97	-421.59	340.87	0.00	
5524.00†	7.082	141.043	5490.14	-315.99	-431.18	348.63	0.00	
5624.00†	7.082	141.043	5589.37	-323.02	-440.77	356.38	0.00	



Planned Wellpath Report

LAUNER 13 (REV-B.0) PWP

Page 4 of 8



REFERENCE WELLPATH IDENTIFICATION

Operator	EXTRACTION OIL & GAS	Slot	SLOT#25 LAUNER 13(630'FSL & 459'FEL,SEC.26)
Area	COLORADO	Well	LAUNER 13
Field	WELD COUNTY (NAD83/TRUE NORTH)	Wellbore	LAUNER 13 PWB
Facility	SEC.26-T07N-R67W		

WELLPATH DATA (155 stations) † = interpolated/extrapolated station

MD [ft]	Inclination [°]	Azimuth [°]	TVD [ft]	Vert Sect [ft]	North [ft]	East [ft]	DLS [°/100ft]	Comments
5724.00†	7.082	141.043	5688.61	-330.05	-450.35	364.13	0.00	
5824.00†	7.082	141.043	5787.85	-337.07	-459.94	371.88	0.00	
5924.00†	7.082	141.043	5887.09	-344.10	-469.53	379.63	0.00	
6024.00†	7.082	141.043	5986.32	-351.12	-479.12	387.39	0.00	
6124.00†	7.082	141.043	6085.56	-358.15	-488.70	395.14	0.00	
6224.00†	7.082	141.043	6184.80	-365.18	-498.29	402.89	0.00	
6324.00†	7.082	141.043	6284.03	-372.20	-507.88	410.64	0.00	
6424.00†	7.082	141.043	6383.27	-379.23	-517.47	418.39	0.00	
6524.00†	7.082	141.043	6482.51	-386.26	-527.06	426.15	0.00	
6624.00†	7.082	141.043	6581.74	-393.28	-536.64	433.90	0.00	
6697.87	7.082	141.043	6655.05	-398.47	-543.73	439.62	0.00	End of Tangent
6724.00†	5.796	161.534	6681.02	-399.72	-546.23	441.06	10.00	
6824.00†	9.794	236.625	6780.29	-393.52	-555.72	435.54	10.00	
6924.00†	18.911	254.147	6877.10	-370.16	-564.85	412.79	10.00	
7024.00†	28.613	260.286	6968.53	-330.35	-573.34	373.50	10.00	
7124.00†	38.459	263.481	7051.79	-275.30	-580.93	318.86	10.00	
7224.00†	48.361	265.528	7124.35	-206.69	-587.39	250.54	10.00	
7324.00†	58.289	267.024	7184.00	-126.59	-592.53	170.60	10.00	
7424.00†	68.232	268.228	7228.94	-37.45	-596.18	81.49	10.00	
7524.00†	78.182	269.274	7257.80	58.04	-598.24	-14.11	10.00	
7624.00†	88.135	270.246	7269.70	156.96	-598.65	-113.27	10.00	
7642.74	90.000	270.425	7270.00 ¹	175.63	-598.54	-132.00	10.00	End of 3D Arc
7724.00†	90.000	270.425	7270.00	256.63	-597.94	-213.26	0.00	
7824.00†	90.000	270.425	7270.00	356.30	-597.19	-313.26	0.00	
7924.00†	90.000	270.425	7270.00	455.98	-596.45	-413.26	0.00	
8024.00†	90.000	270.425	7270.00	555.65	-595.71	-513.25	0.00	
8124.00†	90.000	270.425	7270.00	655.32	-594.97	-613.25	0.00	
8224.00†	90.000	270.425	7270.00	754.99	-594.22	-713.25	0.00	
8324.00†	90.000	270.425	7270.00	854.66	-593.48	-813.24	0.00	
8424.00†	90.000	270.425	7270.00	954.34	-592.74	-913.24	0.00	



Planned Wellpath Report

LAUNER 13 (REV-B.0) PWP

Page 5 of 8



REFERENCE WELLPATH IDENTIFICATION

Operator	EXTRACTION OIL & GAS	Slot	SLOT#25 LAUNER 13(630'FSL & 459'FEL,SEC.26)
Area	COLORADO	Well	LAUNER 13
Field	WELD COUNTY (NAD83/TRUE NORTH)	Wellbore	LAUNER 13 PWB
Facility	SEC.26-T07N-R67W		

WELLPATH DATA (155 stations) † = interpolated/extrapolated station

MD [ft]	Inclination [°]	Azimuth [°]	TVD [ft]	Vert Sect [ft]	North [ft]	East [ft]	DLS [°/100ft]	Comments
8524.00†	90.000	270.425	7270.00	1054.01	-592.00	-1013.24	0.00	
8624.00†	90.000	270.425	7270.00	1153.68	-591.25	-1113.24	0.00	
8724.00†	90.000	270.425	7270.00	1253.35	-590.51	-1213.23	0.00	
8824.00†	90.000	270.425	7270.00	1353.03	-589.77	-1313.23	0.00	
8924.00†	90.000	270.425	7270.00	1452.70	-589.03	-1413.23	0.00	
9024.00†	90.000	270.425	7270.00	1552.37	-588.28	-1513.23	0.00	
9124.00†	90.000	270.425	7270.00	1652.04	-587.54	-1613.22	0.00	
9224.00†	90.000	270.425	7270.00	1751.71	-586.80	-1713.22	0.00	
9324.00†	90.000	270.425	7270.00	1851.39	-586.06	-1813.22	0.00	
9424.00†	90.000	270.425	7270.00	1951.06	-585.31	-1913.21	0.00	
9524.00†	90.000	270.425	7270.00	2050.73	-584.57	-2013.21	0.00	
9624.00†	90.000	270.425	7270.00	2150.40	-583.83	-2113.21	0.00	
9724.00†	90.000	270.425	7270.00	2250.08	-583.09	-2213.21	0.00	
9824.00†	90.000	270.425	7270.00	2349.75	-582.34	-2313.20	0.00	
9924.00†	90.000	270.425	7270.00	2449.42	-581.60	-2413.20	0.00	
10024.00†	90.000	270.425	7270.00	2549.09	-580.86	-2513.20	0.00	
10124.00†	90.000	270.425	7270.00	2648.76	-580.12	-2613.20	0.00	
10224.00†	90.000	270.425	7270.00	2748.44	-579.37	-2713.19	0.00	
10324.00†	90.000	270.425	7270.00	2848.11	-578.63	-2813.19	0.00	
10424.00†	90.000	270.425	7270.00	2947.78	-577.89	-2913.19	0.00	
10524.00†	90.000	270.425	7270.00	3047.45	-577.15	-3013.18	0.00	
10624.00†	90.000	270.425	7270.00	3147.13	-576.40	-3113.18	0.00	
10724.00†	90.000	270.425	7270.00	3246.80	-575.66	-3213.18	0.00	
10824.00†	90.000	270.425	7270.00	3346.47	-574.92	-3313.18	0.00	
10924.00†	90.000	270.425	7270.00	3446.14	-574.18	-3413.17	0.00	
11024.00†	90.000	270.425	7270.00	3545.81	-573.43	-3513.17	0.00	
11124.00†	90.000	270.425	7270.00	3645.49	-572.69	-3613.17	0.00	
11224.00†	90.000	270.425	7270.00	3745.16	-571.95	-3713.16	0.00	
11324.00†	90.000	270.425	7270.00	3844.83	-571.21	-3813.16	0.00	
11424.00†	90.000	270.425	7270.00	3944.50	-570.46	-3913.16	0.00	



Planned Wellpath Report

LAUNER 13 (REV-B.0) PWP

Page 6 of 8



REFERENCE WELLPATH IDENTIFICATION

Operator	EXTRACTION OIL & GAS	Slot	SLOT#25 LAUNER 13(630'FSL & 459'FEL,SEC.26)
Area	COLORADO	Well	LAUNER 13
Field	WELD COUNTY (NAD83/TRUE NORTH)	Wellbore	LAUNER 13 PWB
Facility	SEC.26-T07N-R67W		

WELLPATH DATA (155 stations) † = interpolated/extrapolated station

MD [ft]	Inclination [°]	Azimuth [°]	TVD [ft]	Vert Sect [ft]	North [ft]	East [ft]	DLS [°/100ft]	Comments
11524.00†	90.000	270.425	7270.00	4044.18	-569.72	-4013.16	0.00	
11624.00†	90.000	270.425	7270.00	4143.85	-568.98	-4113.15	0.00	
11724.00†	90.000	270.425	7270.00	4243.52	-568.24	-4213.15	0.00	
11824.00†	90.000	270.425	7270.00	4343.19	-567.49	-4313.15	0.00	
11924.00†	90.000	270.425	7270.00	4442.86	-566.75	-4413.15	0.00	
12024.00†	90.000	270.425	7270.00	4542.54	-566.01	-4513.14	0.00	
12124.00†	90.000	270.425	7270.00	4642.21	-565.27	-4613.14	0.00	
12224.00†	90.000	270.425	7270.00	4741.88	-564.52	-4713.14	0.00	
12324.00†	90.000	270.425	7270.00	4841.55	-563.78	-4813.13	0.00	
12424.00†	90.000	270.425	7270.00	4941.23	-563.04	-4913.13	0.00	
12524.00†	90.000	270.425	7270.00	5040.90	-562.30	-5013.13	0.00	
12624.00†	90.000	270.425	7270.00	5140.57	-561.55	-5113.13	0.00	
12724.00†	90.000	270.425	7270.00	5240.24	-560.81	-5213.12	0.00	
12824.00†	90.000	270.425	7270.00	5339.91	-560.07	-5313.12	0.00	
12924.00†	90.000	270.425	7270.00	5439.59	-559.33	-5413.12	0.00	
13024.00†	90.000	270.425	7270.00	5539.26	-558.58	-5513.12	0.00	
13124.00†	90.000	270.425	7270.00	5638.93	-557.84	-5613.11	0.00	
13224.00†	90.000	270.425	7270.00	5738.60	-557.10	-5713.11	0.00	
13324.00†	90.000	270.425	7270.00	5838.28	-556.36	-5813.11	0.00	
13424.00†	90.000	270.425	7270.00	5937.95	-555.61	-5913.10	0.00	
13524.00†	90.000	270.425	7270.00	6037.62	-554.87	-6013.10	0.00	
13624.00†	90.000	270.425	7270.00	6137.29	-554.13	-6113.10	0.00	
13724.00†	90.000	270.425	7270.00	6236.96	-553.39	-6213.10	0.00	
13824.00†	90.000	270.425	7270.00	6336.64	-552.64	-6313.09	0.00	
13924.00†	90.000	270.425	7270.00	6436.31	-551.90	-6413.09	0.00	
14024.00†	90.000	270.425	7270.00	6535.98	-551.16	-6513.09	0.00	
14124.00†	90.000	270.425	7270.00	6635.65	-550.42	-6613.09	0.00	
14224.00†	90.000	270.425	7270.00	6735.33	-549.67	-6713.08	0.00	
14324.00†	90.000	270.425	7270.00	6835.00	-548.93	-6813.08	0.00	
14424.00†	90.000	270.425	7270.00	6934.67	-548.19	-6913.08	0.00	



Planned Wellpath Report

LAUNER 13 (REV-B.0) PWP

Page 7 of 8



REFERENCE WELLPATH IDENTIFICATION

Operator	EXTRACTION OIL & GAS	Slot	SLOT#25 LAUNER 13(630'FSL & 459'FEL,SEC.26)
Area	COLORADO	Well	LAUNER 13
Field	WELD COUNTY (NAD83/TRUE NORTH)	Wellbore	LAUNER 13 PWB
Facility	SEC.26-T07N-R67W		

WELLPATH DATA (155 stations) † = interpolated/extrapolated station

MD [ft]	Inclination [°]	Azimuth [°]	TVD [ft]	Vert Sect [ft]	North [ft]	East [ft]	DLS [°/100ft]	Comments
14524.00†	90.000	270.425	7270.00	7034.34	-547.45	-7013.07	0.00	
14624.00†	90.000	270.425	7270.00	7134.01	-546.70	-7113.07	0.00	
14724.00†	90.000	270.425	7270.00	7233.69	-545.96	-7213.07	0.00	
14824.00†	90.000	270.425	7270.00	7333.36	-545.22	-7313.07	0.00	
14901.40	90.000	270.425	7270.00 ²	7410.51	-544.64	-7390.46	0.00	End of Tangent

HOLE & CASING SECTIONS - Ref Wellbore: LAUNER 13 PWB Ref Wellpath: LAUNER 13 (REV-B.0) PWP

String/Diameter	Start MD [ft]	End MD [ft]	Interval [ft]	Start TVD [ft]	End TVD [ft]	Start N/S [ft]	Start E/W [ft]	End N/S [ft]	End E/W [ft]
7in Casing Intermediate	24.00	7642.74	7618.74	24.00	7270.00	0.00	0.00	-598.54	-132.00



Planned Wellpath Report

LAUNER 13 (REV-B.0) PWP

Page 8 of 8



REFERENCE WELLPATH IDENTIFICATION

Operator	EXTRACTION OIL & GAS	Slot	SLOT#25 LAUNER 13(630'FSL & 459'FEL,SEC.26)
Area	COLORADO	Well	LAUNER 13
Field	WELD COUNTY (NAD83/TRUE NORTH)	Wellbore	LAUNER 13 PWB
Facility	SEC.26-T07N-R67W		

TARGETS

Name	MD [ft]	TVD [ft]	North [ft]	East [ft]	Grid East [US ft]	Grid North [US ft]	Latitude	Longitude	Shape
SEC.26-T07N-R67W		-17.00	4163.10	-42.24	3179860.07	1444245.18	40°33'03.784"N	104°51'09.932"W	polygon
SEC.27-T07N-R67W		-17.00	4163.10	-42.24	3179860.07	1444245.18	40°33'03.784"N	104°51'09.932"W	polygon
2) LAUNER 13 BHL ON PLAT REV-1(94'FSL & 2560'FEL,SEC.27)	14901.40	7270.00	-544.64	-7390.46	3172546.65	1439484.06	40°32'17.254"N	104°52'45.106"W	point
LAUNER 13 DRILLING CORRIDOR(60')		7270.00	0.00	0.00	3179932.70	1440082.63	40°32'22.646"N	104°51'09.385"W	polygon
LAUNER 13 LANDING		7270.00	-598.58	-1.11	3179935.96	1439484.08	40°32'16.732"N	104°51'09.400"W	point
1) LAUNER 13 LANDING REV-1	7642.74	7270.00	-598.54	-132.00	3179805.08	1439483.16	40°32'16.732"N	104°51'11.095"W	point

SURVEY PROGRAM - Ref Wellbore: LAUNER 13 PWB Ref Wellpath: LAUNER 13 (REV-B.0) PWP

Start MD [ft]	End MD [ft]	Positional Uncertainty Model	Log Name/Comment	Wellbore
24.00	16000.00	NaviTrak (Standard)		LAUNER 13 PWB