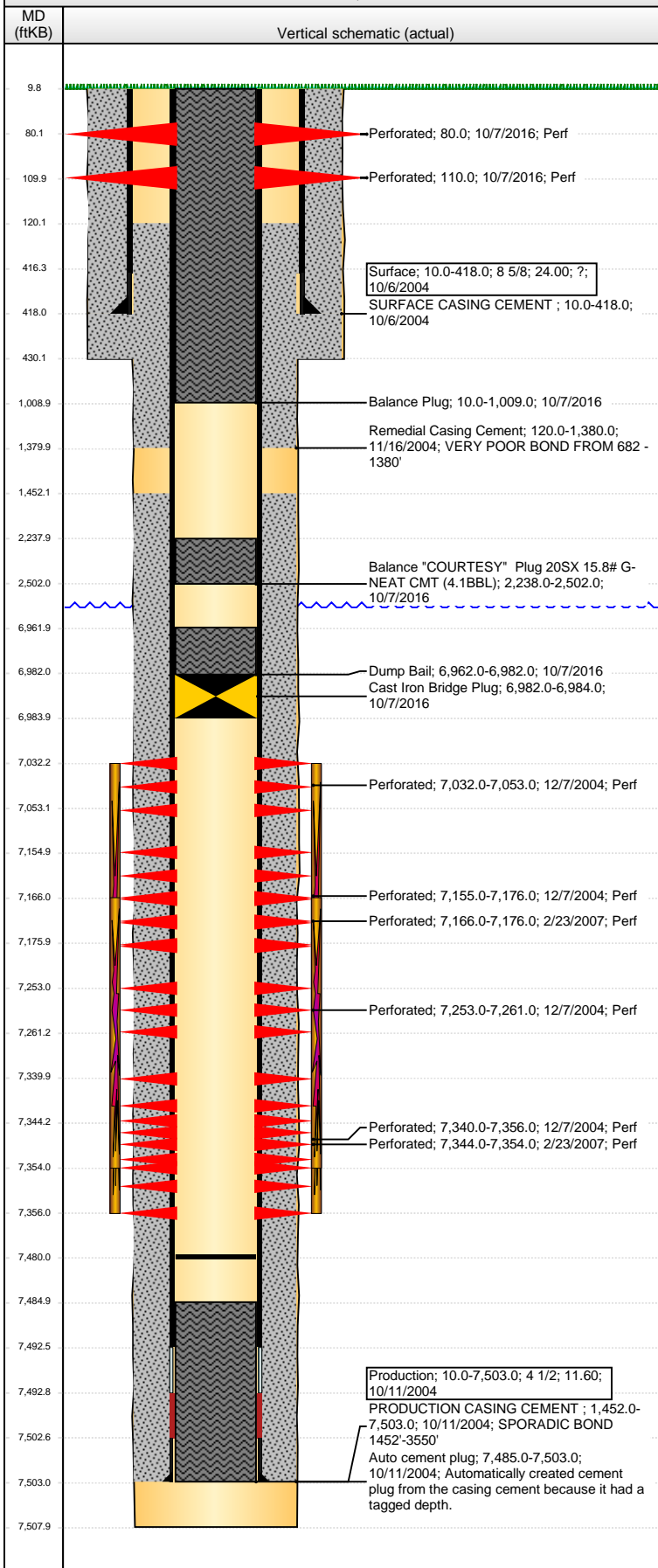


**Well Name: CECIL FARMS 06-14**

VERTICAL - ORIGINAL HOLE, 11/17/2016 3:32:12 PM



Well Header			
API	Business Unit	District	Well Config
05-123-22328	DJ BASIN	15	VERTICAL
Original KB Elevation (ft)	KB - GL / MSL (ftKB)	Spud Date	P & A Date
4,888	10.00	10/5/2004	10/7/2016

Comment

Directions To Well  
27 & 72, N 1/2, W 50', N 125', NW 1/10 INTO

Congressional Location					
Quarter 3	Quarter 4	Section	Township	Twntshp N/S Dir	Range
SE	NE	6	6	N	66
Range E/W Dir			W		

Bottom Hole Location			
North-South Distance (ft)	From N or S Line	East-West Distance (ft)	From E or W Line

Plug Back Total Depths			
Date	Depth (ftKB)	Method	Com
10/11/2004	7,492.4	CASING TALLY	SHOE W/ BAFFLE
10/19/2004	7,485.0	CASED HOLE LOG	DEPTH LOGGER FROM CBL
2/27/2007	7,480.0	TAG	CLEAN OUT & LAND TBG

Wellbore Sections			
Section Des	Size (in)	Act Top, MD (ftKB)	Act Btm, MD (ftKB)
SURFACE	12 1/4	10	430
PRODUCTION	7 7/8	430	7,508

Zone Statuses					
Zone Name	Status Date	Status	Fluid Type	Job	Prod Method
CODELL	12/30/2004	PR	Water	DRILLING/CO...	Flowing
CODELL	3/6/2007	PR		RE-FRAC, 2/8/...	
CODELL	5/13/2010	PR		ABANDON WE...	
CODELL	10/7/2016	P&A		ABANDON WE...	
NIOBRARA	12/30/2004	PR	Water	DRILLING/CO...	Flowing
NIOBRARA	3/6/2007	PR		RE-FRAC, 2/8/...	
NIOBRARA	5/13/2010	PR		ABANDON WE...	
NIOBRARA	10/7/2016	P&A		ABANDON WE...	
NIOBRARA-C...	10/7/2016	P&A		ABANDON WE...	

Casing Strings							
Surface, 418.0ftKB							
Casing Description	Run Date	OD (in)	Wt/Len (l...)	Grade	Top, MD (ft...)	MD (ftKB)	
Surface	10/6/2004	8 5/8	24.00	?	10.0	418.0	

Production, 7,503.0ftKB							
Casing Description	Run Date	OD (in)	Wt/Len (l...)	Grade	Top, MD (ft...)	MD (ftKB)	
Production	10/11/2004	4 1/2	11.60		10.0	7,503.0	

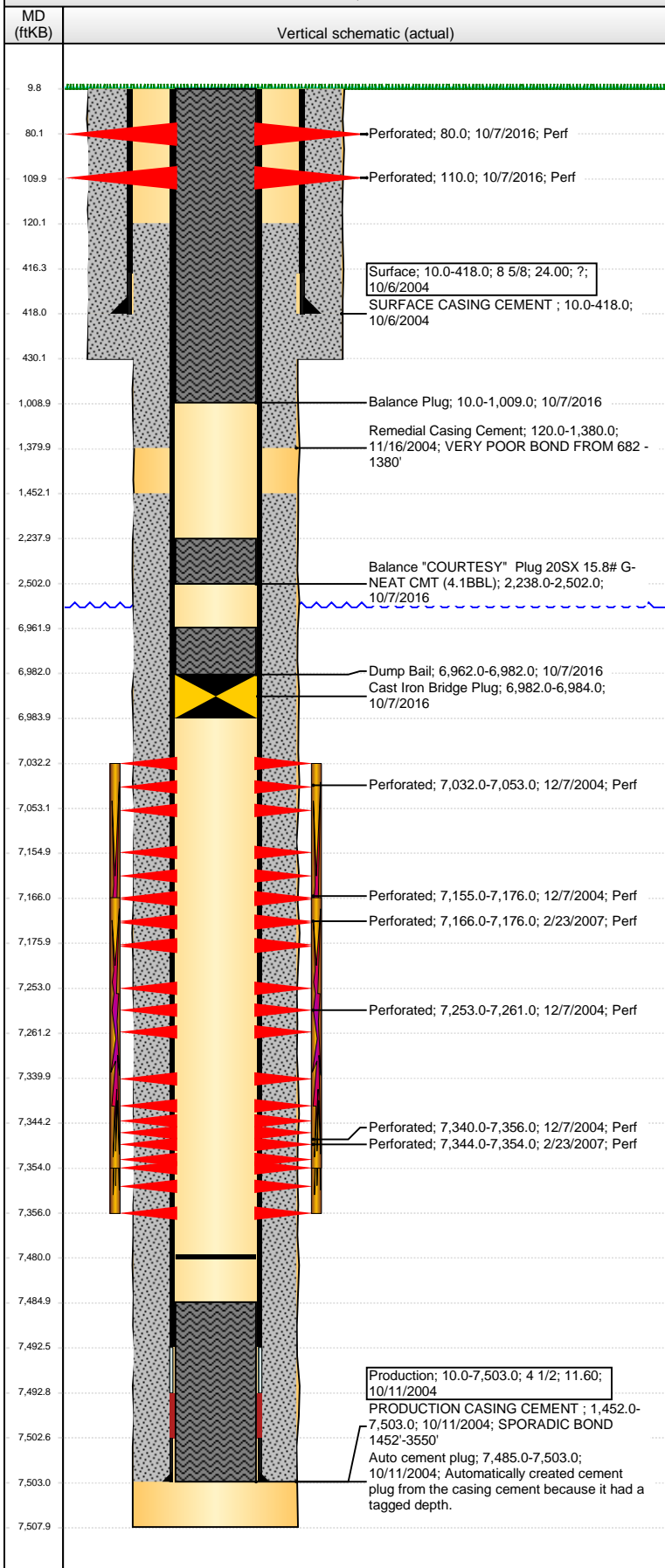
Cement		
Description	Top Depth (ftKB)	Bottom Depth (ftKB)
SURFACE CASING CEMENT	10.0	418.0
PRODUCTION CASING CEMENT	1,452.0	7,503.0
Remedial Casing Cement	120.0	1,380.0
Description	Top Depth (ftKB)	Bottom Depth (ftKB)
Dump Bail	6,962.0	6,982.0
Description	Top Depth (ftKB)	Bottom Depth (ftKB)
Balance "COURTESY" Plug 20SX 15.8# G-NEAT CMT (4.1BBL)	2,238.0	2,502.0
Description	Top Depth (ftKB)	Bottom Depth (ftKB)
Balance Plug	10.0	1,009.0

Tubing Strings							
Tubing Description	Run Date	String...	ID (in)	Wt (lb/ft)	Grade	Len (ft)	Set De...
Tubing	2/27/2007	2	3/8	1.710	?	7,322.00	

Perforation Data					
Zone	Bnch/St g	Entered Shot Total	Top (ftKB)	Btm (ftKB)	Date
		4	80.00	80.00	10/7/2016
		4	110.00	110.00	10/7/2016
NIOBRARA, ORIGINAL HOLE	A		7,032.00	7,053.00	12/7/2004
NIOBRARA, ORIGINAL HOLE	B		7,155.00	7,176.00	12/7/2004
NIOBRARA, ORIGINAL HOLE	B		7,166.00	7,176.00	2/23/2007
NIOBRARA, ORIGINAL HOLE	C		7,253.00	7,261.00	12/7/2004

**Well Name: CECIL FARMS 06-14**

VERTICAL - ORIGINAL HOLE, 11/17/2016 3:32:14 PM



Perforation Data					
Zone	Bnch/St g	Entered Shot Total	Top (ftKB)	Btm (ftKB)	Date
CODELL, ORIGINAL HOLE			7,340.00	7,356.00	12/7/2004
CODELL, ORIGINAL HOLE			7,344.00	7,354.00	2/23/2007

Stimulations & Treatments		
Date	Zone	Primary Job Type
12/10/2004	NIORARA-CODELL, ORIGINAL HOLE	DRILLING/COMPLETION - ORIGINAL
Technical Result		Tech Result Note

Stimulations & Treatments		
Date	Zone	Primary Job Type
2/27/2007	CODELL, ORIGINAL HOLE	RE-FRAC
Technical Result		Tech Result Note

Other In Hole				
Run Date	Des	OD (in)	Top (ftKB)	Btm (ftKB)
10/7/2016	Cast Iron Bridge Plug	3.99	6,982.0	6,984.0

Logs			
Date	Type	Top, MD (ftKB)	Btm, MD (ftKB)
10/10/2004	COMPENSATED DENSITY	3,700.0	7,491.0
10/10/2004	INDUCTION	418.0	7,511.0
10/19/2004	CBL/CCL/GR	1,200.0	7,482.0
12/3/2004	CBL/CCL/GR	100.0	2,000.0
10/5/2016	GYRO	0.0	7,000.0
10/6/2016	CBL/CCL/GR	0.0	1,400.0