

# EXTRACTION OIL & GAS

Location: COLORADO Slot: SLOT#24 LAUNER 12(653'FSL & 443'FEL,SEC.26)  
Field: WELD COUNTY (NAD83/TRUE NORTH) Well: LAUNER 12  
Facility: SEC.26-T07N-R67W Wellbore: LAUNER 12 PWB

Plot reference wellpath is LAUNER 12 (REV-B.0) PWP

True vertical depths are referenced to RIG (RKB)	Grid System: NAD83 / Lambert Colorado SP, Northern Zone (501), US feet
Measured depths are referenced to RIG (RKB)	North Reference: True north
RIG (RKB) to Mean Sea Level: 4955 feet	Scale: True distance
Mean Sea Level to Mud line (At Slot: SLOT#24 LAUNER 12(653'FSL & 443'FEL,SEC.26)): 0 feet	Depths are in feet
Coordinates are in feet referenced to Slot	Created by: painsetr on 10/7/2014

## Location Information

Facility Name			Grid East (US ft)	Grid North (US ft)	Latitude	Longitude
SEC.26-T07N-R67W			3179860.101	1444245.219	40°33'03.784"N	104°51'09.932"W
Slot	Local N (ft)	Local E (ft)	Grid East (US ft)	Grid North (US ft)	Latitude	Longitude
SLOT#24 LAUNER 12(653FSL & 443FEL,SEC.26)	-4139.82	58.06	3179948.372	1440106.062	40°32'22.877"N	104°51'09.180"W
RIG (RKB) to Mud line (At Slot: SLOT#24 LAUNER 12(653FSL & 443FEL,SEC.26))					4955ft	
Mean Sea Level to Mud line (At Slot: SLOT#24 LAUNER 12(653FSL & 443FEL,SEC.26))					0ft	
RIG (RKB) to Mean Sea Level					4955ft	

## Targets

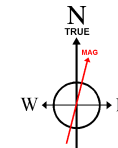
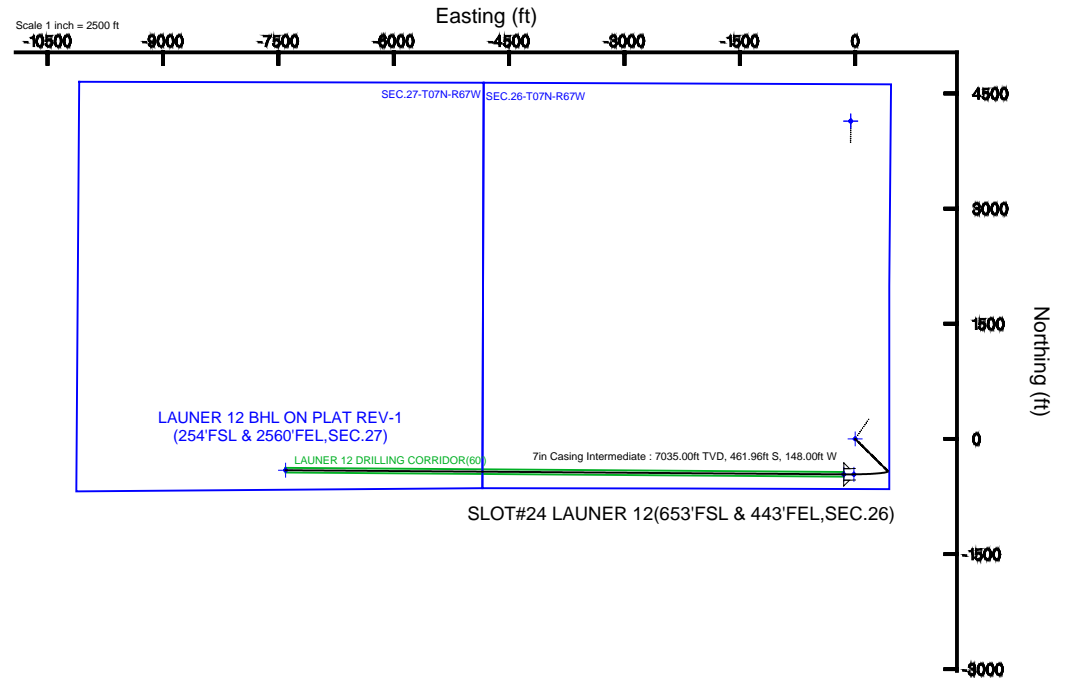
Name	MD (ft)	TVD (ft)	Local N (ft)	Local E (ft)	Grid East (US ft)	Grid North (US ft)	Latitude	Longitude
SEC.26-T07N-R67W		-17.00	4139.79	-58.08	3179860.07	1444245.18	40°33'03.784"N	104°51'09.932"W
SEC.27-T07N-R67W		-17.00	4139.79	-58.08	3179860.07	1444245.18	40°33'03.784"N	104°51'09.932"W
LAUNER 12 BHL ON PLAT REV-1(254'FSL & 2560'FEL,SEC.27)	14654.45	7035.00	-408.02	-7405.98	3172545.81	1439643.99	40°32'18.834"N	104°52'45.102"W
LAUNER 12 DRILLING CORRIDOR(60°)		7035.00	0.00	0.00	3179948.37	1440106.06	40°32'22.877"N	104°51'09.180"W
LAUNER 12 LANDING		7035.00	-461.96	-16.95	3179934.79	1439644.01	40°32'18.312"N	104°51'09.400"W
LAUNER 12 LANDING REV-1	7396.27	7035.00	-461.96	-148.00	3179803.75	1439643.05	40°32'18.312"N	104°51'11.097"W

## Survey Program

Start MD (ft)	End MD (ft)	Tool	Model	Log Name/Comment	Wellbore
24.00	15000.00	NaviTrak	NaviTrak (Standard)		LAUNER 12 PWB

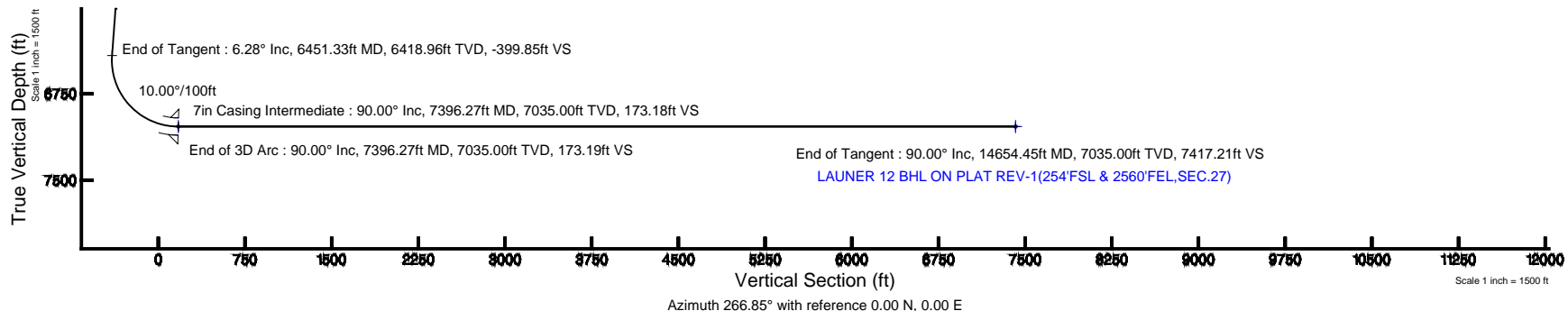
## Well Profile Data

Design Comment	MD (ft)	Inc (°)	Az (°)	TVD (ft)	Local N (ft)	Local E (ft)	DLS (°/100ft)	VS (ft)
Tie On	24.00	0.000	134.684	24.00	0.00	0.00	0.00	0.00
End of Tangent	850.00	0.000	134.684	850.00	0.00	0.00	0.00	0.00
End of Build	1164.07	6.281	134.684	1163.44	-12.09	12.23	2.00	-11.54
End of Tangent	6451.33	6.281	134.684	6418.96	-418.88	423.53	0.00	-399.85
End of 3D Arc	7396.27	90.000	270.426	7035.00	-461.96	-148.00	10.00	173.19
End of Tangent	14654.45	90.000	270.426	7035.00	-408.02	-7405.98	0.00	7417.21



BGGM (1945.0 to 2016.0) Dip: 67.04° Field: 52816.5 nT  
Magnetic North is 8.59 degrees East of True North (at 7/24/2014)

To correct azimuth from Magnetic to True add 8.59 degrees





# Planned Wellpath Report

LAUNER 12 (REV-B.0) PWP

Page 1 of 8



## REFERENCE WELLPATH IDENTIFICATION

Operator	EXTRACTION OIL & GAS	Slot	SLOT#24 LAUNER 12(653'FSL & 443'FEL,SEC.26)
Area	COLORADO	Well	LAUNER 12
Field	WELD COUNTY (NAD83/TRUE NORTH)	Wellbore	LAUNER 12 PWB
Facility	SEC.26-T07N-R67W		

## REPORT SETUP INFORMATION

Projection System	NAD83 / Lambert Colorado SP, Northern Zone (501), US feet	Software System	WellArchitect® 4.0.0
North Reference	True	User	Painsetr
Scale	0.99997	Report Generated	10/7/2014 at 2:11:48 PM
Convergence at slot	n/a	Database/Source file	WA_Denver/LAUNER_12_PWB.xml

## WELLPATH LOCATION

	Local coordinates		Grid coordinates		Geographic coordinates	
	North[ft]	East[ft]	Easting[US ft]	Northing[US ft]	Latitude	Longitude
Slot Location	-4139.82	58.06	3179948.37	1440106.06	40°32'22.877"N	104°51'09.180"W
Facility Reference Pt			3179860.10	1444245.22	40°33'03.784"N	104°51'09.932"W
Field Reference Pt			3185481.27	1419166.81	40°28'55.560"N	104°49'59.556"W

## WELLPATH DATUM

Calculation method	Minimum curvature	RIG (RKB) to Facility Vertical Datum	4955.00ft
Horizontal Reference Pt	Slot	RIG (RKB) to Mean Sea Level	4955.00ft
Vertical Reference Pt	RIG (RKB)	RIG (RKB) to Mud Line at Slot (SLOT#24 LAUNER 12(653'FSL & 443'FEL,SEC.26))	4955.00ft
MD Reference Pt	RIG (RKB)	Section Origin	N 0.00, E 0.00 ft
Field Vertical Reference	Mean Sea Level	Section Azimuth	266.85°



# Planned Wellpath Report

LAUNER 12 (REV-B.0) PWP

Page 2 of 8



## REFERENCE WELLPATH IDENTIFICATION

Operator	EXTRACTION OIL & GAS	Slot	SLOT#24 LAUNER 12(653'FSL & 443'FEL,SEC.26)
Area	COLORADO	Well	LAUNER 12
Field	WELD COUNTY (NAD83/TRUE NORTH)	Wellbore	LAUNER 12 PWB
Facility	SEC.26-T07N-R67W		

## WELLPATH DATA (153 stations) † = interpolated/extrapolated station

MD [ft]	Inclination [°]	Azimuth [°]	TVD [ft]	Vert Sect [ft]	North [ft]	East [ft]	DLS [°/100ft]	Comments
0.00†	0.000	134.684	0.00	0.00	0.00	0.00	0.00	
24.00	0.000	134.684	24.00	0.00	0.00	0.00	0.00	Tie On
124.00†	0.000	134.684	124.00	0.00	0.00	0.00	0.00	
224.00†	0.000	134.684	224.00	0.00	0.00	0.00	0.00	
324.00†	0.000	134.684	324.00	0.00	0.00	0.00	0.00	
424.00†	0.000	134.684	424.00	0.00	0.00	0.00	0.00	
524.00†	0.000	134.684	524.00	0.00	0.00	0.00	0.00	
624.00†	0.000	134.684	624.00	0.00	0.00	0.00	0.00	
724.00†	0.000	134.684	724.00	0.00	0.00	0.00	0.00	
824.00†	0.000	134.684	824.00	0.00	0.00	0.00	0.00	
850.00	0.000	134.684	850.00	0.00	0.00	0.00	0.00	End of Tangent
924.00†	1.480	134.684	923.99	-0.64	-0.67	0.68	2.00	
1024.00†	3.480	134.684	1023.89	-3.55	-3.71	3.76	2.00	
1124.00†	5.480	134.684	1123.58	-8.79	-9.21	9.31	2.00	
1164.07	6.281	134.684	1163.44	-11.54	-12.09	12.23	2.00	End of Build
1224.00†	6.281	134.684	1223.01	-15.95	-16.70	16.89	0.00	
1324.00†	6.281	134.684	1322.41	-23.29	-24.40	24.67	0.00	
1424.00†	6.281	134.684	1421.81	-30.63	-32.09	32.45	0.00	
1524.00†	6.281	134.684	1521.21	-37.98	-39.79	40.23	0.00	
1624.00†	6.281	134.684	1620.61	-45.32	-47.48	48.01	0.00	
1724.00†	6.281	134.684	1720.01	-52.67	-55.17	55.79	0.00	
1824.00†	6.281	134.684	1819.41	-60.01	-62.87	63.57	0.00	
1924.00†	6.281	134.684	1918.81	-67.35	-70.56	71.34	0.00	
2024.00†	6.281	134.684	2018.21	-74.70	-78.25	79.12	0.00	
2124.00†	6.281	134.684	2117.61	-82.04	-85.95	86.90	0.00	
2224.00†	6.281	134.684	2217.01	-89.39	-93.64	94.68	0.00	
2324.00†	6.281	134.684	2316.41	-96.73	-101.34	102.46	0.00	
2424.00†	6.281	134.684	2415.81	-104.08	-109.03	110.24	0.00	
2524.00†	6.281	134.684	2515.21	-111.42	-116.72	118.02	0.00	
2624.00†	6.281	134.684	2614.61	-118.76	-124.42	125.80	0.00	



# Planned Wellpath Report

LAUNER 12 (REV-B.0) PWP

Page 3 of 8



## REFERENCE WELLPATH IDENTIFICATION

Operator	EXTRACTION OIL & GAS	Slot	SLOT#24 LAUNER 12(653'FSL & 443'FEL,SEC.26)
Area	COLORADO	Well	LAUNER 12
Field	WELD COUNTY (NAD83/TRUE NORTH)	Wellbore	LAUNER 12 PWB
Facility	SEC.26-T07N-R67W		

## WELLPATH DATA (153 stations) † = interpolated/extrapolated station

MD [ft]	Inclination [°]	Azimuth [°]	TVD [ft]	Vert Sect [ft]	North [ft]	East [ft]	DLS [°/100ft]	Comments
2724.00†	6.281	134.684	2714.01	-126.11	-132.11	133.58	0.00	
2824.00†	6.281	134.684	2813.41	-133.45	-139.80	141.36	0.00	
2924.00†	6.281	134.684	2912.81	-140.80	-147.50	149.14	0.00	
3024.00†	6.281	134.684	3012.21	-148.14	-155.19	156.91	0.00	
3124.00†	6.281	134.684	3111.60	-155.48	-162.89	164.69	0.00	
3224.00†	6.281	134.684	3211.00	-162.83	-170.58	172.47	0.00	
3324.00†	6.281	134.684	3310.40	-170.17	-178.27	180.25	0.00	
3424.00†	6.281	134.684	3409.80	-177.52	-185.97	188.03	0.00	
3524.00†	6.281	134.684	3509.20	-184.86	-193.66	195.81	0.00	
3624.00†	6.281	134.684	3608.60	-192.21	-201.35	203.59	0.00	
3724.00†	6.281	134.684	3708.00	-199.55	-209.05	211.37	0.00	
3824.00†	6.281	134.684	3807.40	-206.89	-216.74	219.15	0.00	
3924.00†	6.281	134.684	3906.80	-214.24	-224.44	226.93	0.00	
4024.00†	6.281	134.684	4006.20	-221.58	-232.13	234.71	0.00	
4124.00†	6.281	134.684	4105.60	-228.93	-239.82	242.49	0.00	
4224.00†	6.281	134.684	4205.00	-236.27	-247.52	250.26	0.00	
4324.00†	6.281	134.684	4304.40	-243.61	-255.21	258.04	0.00	
4424.00†	6.281	134.684	4403.80	-250.96	-262.90	265.82	0.00	
4524.00†	6.281	134.684	4503.20	-258.30	-270.60	273.60	0.00	
4624.00†	6.281	134.684	4602.60	-265.65	-278.29	281.38	0.00	
4724.00†	6.281	134.684	4702.00	-272.99	-285.99	289.16	0.00	
4824.00†	6.281	134.684	4801.40	-280.33	-293.68	296.94	0.00	
4924.00†	6.281	134.684	4900.80	-287.68	-301.37	304.72	0.00	
5024.00†	6.281	134.684	5000.20	-295.02	-309.07	312.50	0.00	
5124.00†	6.281	134.684	5099.60	-302.37	-316.76	320.28	0.00	
5224.00†	6.281	134.684	5199.00	-309.71	-324.45	328.06	0.00	
5324.00†	6.281	134.684	5298.40	-317.06	-332.15	335.84	0.00	
5424.00†	6.281	134.684	5397.80	-324.40	-339.84	343.61	0.00	
5524.00†	6.281	134.684	5497.20	-331.74	-347.54	351.39	0.00	
5624.00†	6.281	134.684	5596.60	-339.09	-355.23	359.17	0.00	



# Planned Wellpath Report

LAUNER 12 (REV-B.0) PWP

Page 4 of 8



## REFERENCE WELLPATH IDENTIFICATION

Operator	EXTRACTION OIL & GAS	Slot	SLOT#24 LAUNER 12(653'FSL & 443'FEL,SEC.26)
Area	COLORADO	Well	LAUNER 12
Field	WELD COUNTY (NAD83/TRUE NORTH)	Wellbore	LAUNER 12 PWB
Facility	SEC.26-T07N-R67W		

## WELLPATH DATA (153 stations) † = interpolated/extrapolated station

MD [ft]	Inclination [°]	Azimuth [°]	TVD [ft]	Vert Sect [ft]	North [ft]	East [ft]	DLS [°/100ft]	Comments
5724.00†	6.281	134.684	5696.00	-346.43	-362.92	366.95	0.00	
5824.00†	6.281	134.684	5795.40	-353.78	-370.62	374.73	0.00	
5924.00†	6.281	134.684	5894.80	-361.12	-378.31	382.51	0.00	
6024.00†	6.281	134.684	5994.19	-368.46	-386.00	390.29	0.00	
6124.00†	6.281	134.684	6093.59	-375.81	-393.70	398.07	0.00	
6224.00†	6.281	134.684	6192.99	-383.15	-401.39	405.85	0.00	
6324.00†	6.281	134.684	6292.39	-390.50	-409.09	413.63	0.00	
6424.00†	6.281	134.684	6391.79	-397.84	-416.78	421.41	0.00	
6451.33	6.281	134.684	6418.96	-399.85	-418.88	423.53	0.00	End of Tangent
6524.00†	5.193	212.731	6491.36	-400.59	-424.45	424.58	10.00	
6624.00†	13.495	251.757	6590.02	-386.64	-431.93	411.02	10.00	
6724.00†	23.170	260.086	6684.85	-355.76	-438.99	380.48	10.00	
6824.00†	33.033	263.641	6772.96	-308.89	-445.41	333.89	10.00	
6924.00†	42.954	265.693	6851.67	-247.45	-451.00	272.68	10.00	
7024.00†	52.900	267.095	6918.60	-173.32	-455.59	198.68	10.00	
7124.00†	62.859	268.169	6971.70	-88.75	-459.04	114.17	10.00	
7224.00†	72.825	269.065	7009.37	3.71	-461.25	21.70	10.00	
7324.00†	82.794	269.869	7030.46	101.22	-462.15	-75.92	10.00	
7396.27	90.000	270.426	7035.00 <sup>1</sup>	173.19	-461.96	-148.00	10.00	End of 3D Arc
7424.00†	90.000	270.426	7035.00	200.86	-461.75	-175.73	0.00	
7524.00†	90.000	270.426	7035.00	300.67	-461.01	-275.72	0.00	
7624.00†	90.000	270.426	7035.00	400.47	-460.27	-375.72	0.00	
7724.00†	90.000	270.426	7035.00	500.28	-459.52	-475.72	0.00	
7824.00†	90.000	270.426	7035.00	600.08	-458.78	-575.71	0.00	
7924.00†	90.000	270.426	7035.00	699.88	-458.04	-675.71	0.00	
8024.00†	90.000	270.426	7035.00	799.69	-457.29	-775.71	0.00	
8124.00†	90.000	270.426	7035.00	899.49	-456.55	-875.71	0.00	
8224.00†	90.000	270.426	7035.00	999.30	-455.81	-975.70	0.00	
8324.00†	90.000	270.426	7035.00	1099.10	-455.06	-1075.70	0.00	
8424.00†	90.000	270.426	7035.00	1198.91	-454.32	-1175.70	0.00	



# Planned Wellpath Report

LAUNER 12 (REV-B.0) PWP

Page 5 of 8



## REFERENCE WELLPATH IDENTIFICATION

Operator	EXTRACTION OIL & GAS	Slot	SLOT#24 LAUNER 12(653'FSL & 443'FEL,SEC.26)
Area	COLORADO	Well	LAUNER 12
Field	WELD COUNTY (NAD83/TRUE NORTH)	Wellbore	LAUNER 12 PWB
Facility	SEC.26-T07N-R67W		

## WELLPATH DATA (153 stations) † = interpolated/extrapolated station

MD [ft]	Inclination [°]	Azimuth [°]	TVD [ft]	Vert Sect [ft]	North [ft]	East [ft]	DLS [°/100ft]	Comments
8524.00†	90.000	270.426	7035.00	1298.71	-453.58	-1275.70	0.00	
8624.00†	90.000	270.426	7035.00	1398.52	-452.84	-1375.69	0.00	
8724.00†	90.000	270.426	7035.00	1498.32	-452.09	-1475.69	0.00	
8824.00†	90.000	270.426	7035.00	1598.13	-451.35	-1575.69	0.00	
8924.00†	90.000	270.426	7035.00	1697.93	-450.61	-1675.68	0.00	
9024.00†	90.000	270.426	7035.00	1797.74	-449.86	-1775.68	0.00	
9124.00†	90.000	270.426	7035.00	1897.54	-449.12	-1875.68	0.00	
9224.00†	90.000	270.426	7035.00	1997.35	-448.38	-1975.68	0.00	
9324.00†	90.000	270.426	7035.00	2097.15	-447.63	-2075.67	0.00	
9424.00†	90.000	270.426	7035.00	2196.96	-446.89	-2175.67	0.00	
9524.00†	90.000	270.426	7035.00	2296.76	-446.15	-2275.67	0.00	
9624.00†	90.000	270.426	7035.00	2396.57	-445.40	-2375.66	0.00	
9724.00†	90.000	270.426	7035.00	2496.37	-444.66	-2475.66	0.00	
9824.00†	90.000	270.426	7035.00	2596.18	-443.92	-2575.66	0.00	
9924.00†	90.000	270.426	7035.00	2695.98	-443.17	-2675.66	0.00	
10024.00†	90.000	270.426	7035.00	2795.79	-442.43	-2775.65	0.00	
10124.00†	90.000	270.426	7035.00	2895.59	-441.69	-2875.65	0.00	
10224.00†	90.000	270.426	7035.00	2995.40	-440.94	-2975.65	0.00	
10324.00†	90.000	270.426	7035.00	3095.20	-440.20	-3075.65	0.00	
10424.00†	90.000	270.426	7035.00	3195.01	-439.46	-3175.64	0.00	
10524.00†	90.000	270.426	7035.00	3294.81	-438.72	-3275.64	0.00	
10624.00†	90.000	270.426	7035.00	3394.62	-437.97	-3375.64	0.00	
10724.00†	90.000	270.426	7035.00	3494.42	-437.23	-3475.63	0.00	
10824.00†	90.000	270.426	7035.00	3594.23	-436.49	-3575.63	0.00	
10924.00†	90.000	270.426	7035.00	3694.03	-435.74	-3675.63	0.00	
11024.00†	90.000	270.426	7035.00	3793.84	-435.00	-3775.63	0.00	
11124.00†	90.000	270.426	7035.00	3893.64	-434.26	-3875.62	0.00	
11224.00†	90.000	270.426	7035.00	3993.45	-433.51	-3975.62	0.00	
11324.00†	90.000	270.426	7035.00	4093.25	-432.77	-4075.62	0.00	
11424.00†	90.000	270.426	7035.00	4193.06	-432.03	-4175.61	0.00	



# Planned Wellpath Report

LAUNER 12 (REV-B.0) PWP

Page 6 of 8



## REFERENCE WELLPATH IDENTIFICATION

Operator	EXTRACTION OIL & GAS	Slot	SLOT#24 LAUNER 12(653'FSL & 443'FEL,SEC.26)
Area	COLORADO	Well	LAUNER 12
Field	WELD COUNTY (NAD83/TRUE NORTH)	Wellbore	LAUNER 12 PWB
Facility	SEC.26-T07N-R67W		

## WELLPATH DATA (153 stations) † = interpolated/extrapolated station

MD [ft]	Inclination [°]	Azimuth [°]	TVD [ft]	Vert Sect [ft]	North [ft]	East [ft]	DLS [°/100ft]	Comments
11524.00†	90.000	270.426	7035.00	4292.86	-431.28	-4275.61	0.00	
11624.00†	90.000	270.426	7035.00	4392.67	-430.54	-4375.61	0.00	
11724.00†	90.000	270.426	7035.00	4492.47	-429.80	-4475.61	0.00	
11824.00†	90.000	270.426	7035.00	4592.28	-429.05	-4575.60	0.00	
11924.00†	90.000	270.426	7035.00	4692.08	-428.31	-4675.60	0.00	
12024.00†	90.000	270.426	7035.00	4791.89	-427.57	-4775.60	0.00	
12124.00†	90.000	270.426	7035.00	4891.69	-426.82	-4875.60	0.00	
12224.00†	90.000	270.426	7035.00	4991.50	-426.08	-4975.59	0.00	
12324.00†	90.000	270.426	7035.00	5091.30	-425.34	-5075.59	0.00	
12424.00†	90.000	270.426	7035.00	5191.11	-424.60	-5175.59	0.00	
12524.00†	90.000	270.426	7035.00	5290.91	-423.85	-5275.58	0.00	
12624.00†	90.000	270.426	7035.00	5390.72	-423.11	-5375.58	0.00	
12724.00†	90.000	270.426	7035.00	5490.52	-422.37	-5475.58	0.00	
12824.00†	90.000	270.426	7035.00	5590.33	-421.62	-5575.58	0.00	
12924.00†	90.000	270.426	7035.00	5690.13	-420.88	-5675.57	0.00	
13024.00†	90.000	270.426	7035.00	5789.94	-420.14	-5775.57	0.00	
13124.00†	90.000	270.426	7035.00	5889.74	-419.39	-5875.57	0.00	
13224.00†	90.000	270.426	7035.00	5989.55	-418.65	-5975.57	0.00	
13324.00†	90.000	270.426	7035.00	6089.35	-417.91	-6075.56	0.00	
13424.00†	90.000	270.426	7035.00	6189.16	-417.16	-6175.56	0.00	
13524.00†	90.000	270.426	7035.00	6288.96	-416.42	-6275.56	0.00	
13624.00†	90.000	270.426	7035.00	6388.77	-415.68	-6375.55	0.00	
13724.00†	90.000	270.426	7035.00	6488.57	-414.93	-6475.55	0.00	
13824.00†	90.000	270.426	7035.00	6588.38	-414.19	-6575.55	0.00	
13924.00†	90.000	270.426	7035.00	6688.18	-413.45	-6675.55	0.00	
14024.00†	90.000	270.426	7035.00	6787.99	-412.70	-6775.54	0.00	
14124.00†	90.000	270.426	7035.00	6887.79	-411.96	-6875.54	0.00	
14224.00†	90.000	270.426	7035.00	6987.60	-411.22	-6975.54	0.00	
14324.00†	90.000	270.426	7035.00	7087.40	-410.48	-7075.53	0.00	
14424.00†	90.000	270.426	7035.00	7187.21	-409.73	-7175.53	0.00	



# Planned Wellpath Report

LAUNER 12 (REV-B.0) PWP

Page 7 of 8



## REFERENCE WELLPATH IDENTIFICATION

Operator	EXTRACTION OIL & GAS	Slot	SLOT#24 LAUNER 12(653'FSL & 443'FEL,SEC.26)
Area	COLORADO	Well	LAUNER 12
Field	WELD COUNTY (NAD83/TRUE NORTH)	Wellbore	LAUNER 12 PWB
Facility	SEC.26-T07N-R67W		

## WELLPATH DATA (153 stations) † = interpolated/extrapolated station

MD [ft]	Inclination [°]	Azimuth [°]	TVD [ft]	Vert Sect [ft]	North [ft]	East [ft]	DLS [°/100ft]	Comments
14524.00†	90.000	270.426	7035.00	7287.01	-408.99	-7275.53	0.00	
14624.00†	90.000	270.426	7035.00	7386.82	-408.25	-7375.53	0.00	
14654.45	90.000	270.426	7035.00 <sup>2</sup>	7417.21	-408.02	-7405.98	0.00	End of Tangent

## HOLE & CASING SECTIONS - Ref Wellbore: LAUNER 12 PWB Ref Wellpath: LAUNER 12 (REV-B.0) PWP

String/Diameter	Start MD [ft]	End MD [ft]	Interval [ft]	Start TVD [ft]	End TVD [ft]	Start N/S [ft]	Start E/W [ft]	End N/S [ft]	End E/W [ft]
7in Casing Intermediate	24.00	7396.27	7372.27	24.00	7035.00	0.00	0.00	-461.96	-148.00





# Planned Wellpath Report

LAUNER 12 (REV-B.0) PWP

Page 8 of 8



## REFERENCE WELLPATH IDENTIFICATION

Operator	EXTRACTION OIL & GAS	Slot	SLOT#24 LAUNER 12(653'FSL & 443'FEL,SEC.26)
Area	COLORADO	Well	LAUNER 12
Field	WELD COUNTY (NAD83/TRUE NORTH)	Wellbore	LAUNER 12 PWB
Facility	SEC.26-T07N-R67W		

## TARGETS

Name	MD [ft]	TVD [ft]	North [ft]	East [ft]	Grid East [US ft]	Grid North [US ft]	Latitude	Longitude	Shape
SEC.26-T07N-R67W		-17.00	4139.79	-58.08	3179860.07	1444245.18	40°33'03.784"N	104°51'09.932"W	polygon
SEC.27-T07N-R67W		-17.00	4139.79	-58.08	3179860.07	1444245.18	40°33'03.784"N	104°51'09.932"W	polygon
2) LAUNER 12 BHL ON PLAT REV-1(254'FSL & 2560'FEL,SEC.27)	14654.45	7035.00	-408.02	-7405.98	3172545.81	1439643.99	40°32'18.834"N	104°52'45.102"W	point
LAUNER 12 DRILLING CORRIDOR(60')		7035.00	0.00	0.00	3179948.37	1440106.06	40°32'22.877"N	104°51'09.180"W	polygon
LAUNER 12 LANDING		7035.00	-461.96	-16.95	3179934.79	1439644.01	40°32'18.312"N	104°51'09.400"W	point
1) LAUNER 12 LANDING REV-1	7396.27	7035.00	-461.96	-148.00	3179803.75	1439643.05	40°32'18.312"N	104°51'11.097"W	point

## SURVEY PROGRAM - Ref Wellbore: LAUNER 12 PWB Ref Wellpath: LAUNER 12 (REV-B.0) PWP

Start MD [ft]	End MD [ft]	Positional Uncertainty Model	Log Name/Comment	Wellbore
24.00	15000.00	NaviTrak (Standard)		LAUNER 12 PWB