

EXTRACTION OIL & GAS

Location: COLORADO Slot: SLOT#23 LAUNER 11(676'FSL & 428'FEL,SEC.26)
Field: WELD COUNTY (NAD83/TRUE NORTH) Well: LAUNER 11
Facility: SEC.26-T07N-R67W Wellbore: LAUNER 11 PWB

Plot reference wellpath is LAUNER 11 (REV-B.0) PWP

True vertical depths are referenced to RIG (RKB)	Grid System: NAD83 / Lambert Colorado SP, Northern Zone (501), US feet
Measured depths are referenced to RIG (RKB)	North Reference: True north
RIG (RKB) to Mean Sea Level: 4955 feet	Scale: True distance
Mean Sea Level to Mud line (At Slot: SLOT#23 LAUNER 11(676'FSL & 428'FEL,SEC.26)): 0 feet	Depths are in feet
Coordinates are in feet referenced to Slot	Created by: painsetr on 10/7/2014

Location Information

Facility Name			Grid East (US ft)	Grid North (US ft)	Latitude	Longitude
SEC.26-T07N-R67W			3179860.101	1444245.219	40°33'03.784"N	104°51'09.932"W
Slot	Local N (ft)	Local E (ft)	Grid East (US ft)	Grid North (US ft)	Latitude	Longitude
SLOT#23 LAUNER 11(676FSL & 428FEL,SEC.26)	-4116.87	73.90	3179964.047	1440129.128	40°32'23.104"N	104°51'08.975"W
RIG (RKB) to Mud line (At Slot: SLOT#23 LAUNER 11(676FSL & 428FEL,SEC.26))					4955ft	
Mean Sea Level to Mud line (At Slot: SLOT#23 LAUNER 11(676FSL & 428FEL,SEC.26))					0ft	
RIG (RKB) to Mean Sea Level					4955ft	

Targets

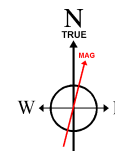
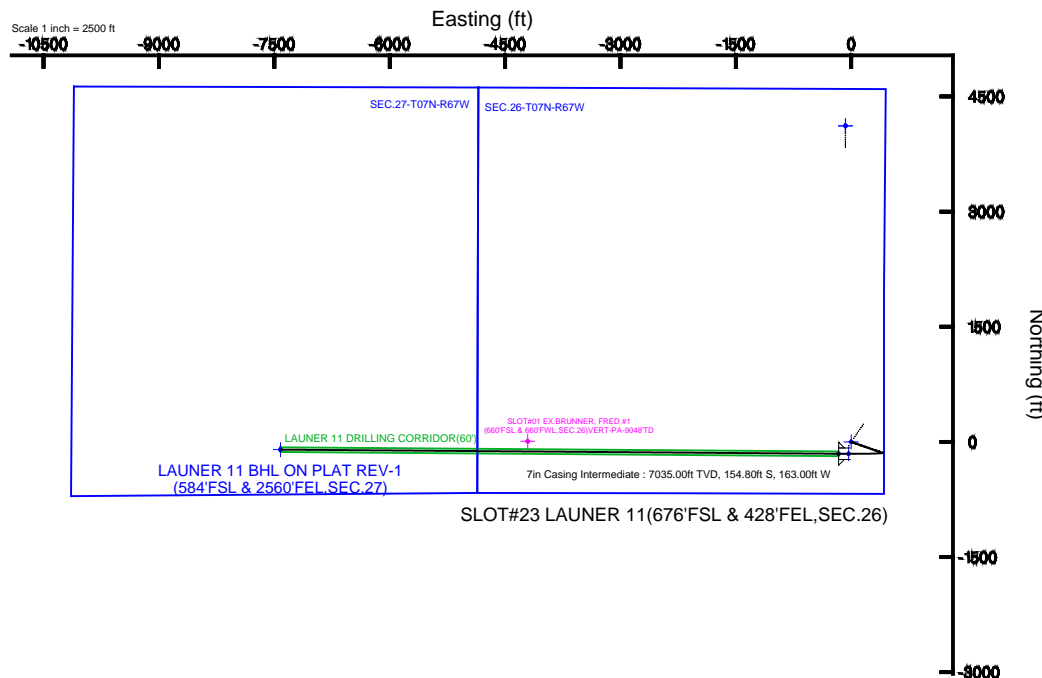
Name	MD (ft)	TVD (ft)	Local N (ft)	Local E (ft)	Grid East (US ft)	Grid North (US ft)	Latitude	Longitude
SEC.26-T07N-R67W		-17.00	4116.83	-73.92	3179860.07	1444245.18	40°33'03.784"N	104°51'09.932"W
SEC.27-T07N-R67W		-17.00	4116.83	-73.92	3179860.07	1444245.18	40°33'03.784"N	104°51'09.932"W
LAUNER 11 BHL ON PLAT REV-1(584'FSL & 2560'FEL,SEC.27)	14637.40	7035.00	-100.89	-7420.89	3172544.33	1439974.06	40°32'22.096"N	104°52'45.091"W
LAUNER 11 DRILLING CORRIDOR(60')		7035.00	0.00	0.00	3179964.05	1440129.13	40°32'23.104"N	104°51'08.975"W
LAUNER 11 LANDING		7035.00	-154.84	-32.52	3179932.66	1439974.06	40°32'21.574"N	104°51'09.396"W
LAUNER 11 LANDING REV-1	7379.31	7035.00	-154.80	-163.00	3179902.19	1439973.15	40°32'21.574"N	104°51'11.086"W

Survey Program

Start MD (ft)	End MD (ft)	Tool	Model	Log Name/Comment	Wellbore
24.00	15000.00	NaviTrak	NaviTrak (Standard)		LAUNER 11 PWB

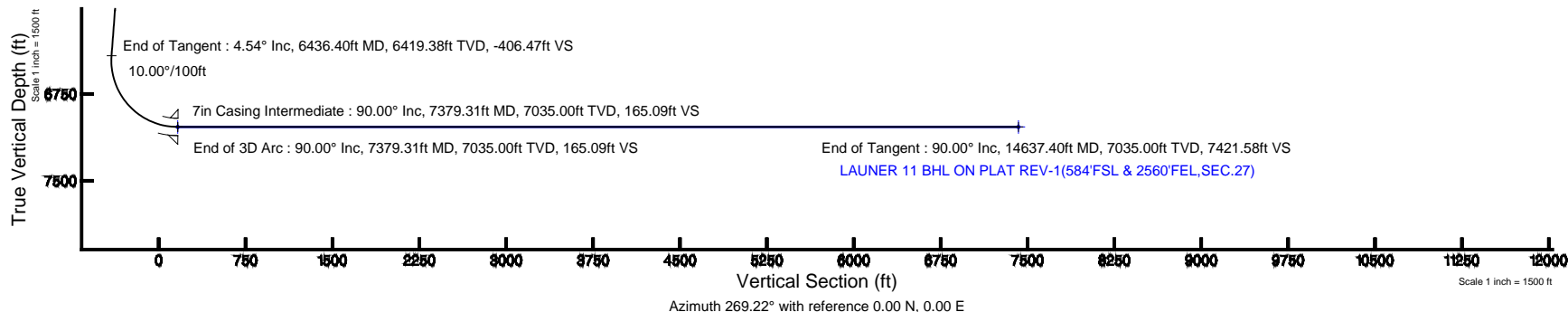
Well Profile Data

Design Comment	MD (ft)	Inc (°)	Az (°)	TVD (ft)	Local N (ft)	Local E (ft)	DLS (°/100ft)	VS (ft)
Tie On	24.00	0.000	109.323	24.00	0.00	0.00	0.00	0.00
End of Tangent	850.00	0.000	109.323	850.00	0.00	0.00	0.00	0.00
End of Build	1076.80	4.536	109.323	1076.56	-2.97	8.47	2.00	-8.43
End of Tangent	6436.40	4.536	109.323	6419.38	-143.22	408.45	0.00	-406.47
End of 3D Arc	7379.31	90.000	270.426	7035.00	-154.80	-163.00	10.00	165.09
End of Tangent	14637.40	90.000	270.426	7035.00	-100.89	-7420.89	0.00	7421.58



BGGM (1945.0 to 2016.0) Dip: 67.04° Field: 52816.5 nT
Magnetic North is 8.59 degrees East of True North (at 7/24/2014)

To correct azimuth from Magnetic to True add 8.59 degrees





Planned Wellpath Report

LAUNER 11 (REV-B.0) PWP

Page 1 of 8



REFERENCE WELLPATH IDENTIFICATION

Operator	EXTRACTION OIL & GAS	Slot	SLOT#23 LAUNER 11(676'FSL & 428'FEL,SEC.26)
Area	COLORADO	Well	LAUNER 11
Field	WELD COUNTY (NAD83/TRUE NORTH)	Wellbore	LAUNER 11 PWB
Facility	SEC.26-T07N-R67W		

REPORT SETUP INFORMATION

Projection System	NAD83 / Lambert Colorado SP, Northern Zone (501), US feet	Software System	WellArchitect® 4.0.0
North Reference	True	User	Painsetr
Scale	0.99997	Report Generated	10/7/2014 at 2:08:24 PM
Convergence at slot	n/a	Database/Source file	WA_Denver/LAUNER_11_PWB.xml

WELLPATH LOCATION

	Local coordinates		Grid coordinates		Geographic coordinates	
	North[ft]	East[ft]	Easting[US ft]	Northing[US ft]	Latitude	Longitude
Slot Location	-4116.87	73.90	3179964.05	1440129.13	40°32'23.104"N	104°51'08.975"W
Facility Reference Pt			3179860.10	1444245.22	40°33'03.784"N	104°51'09.932"W
Field Reference Pt			3185481.27	1419166.81	40°28'55.560"N	104°49'59.556"W

WELLPATH DATUM

Calculation method	Minimum curvature	RIG (RKB) to Facility Vertical Datum	4955.00ft
Horizontal Reference Pt	Slot	RIG (RKB) to Mean Sea Level	4955.00ft
Vertical Reference Pt	RIG (RKB)	RIG (RKB) to Mud Line at Slot (SLOT#23 LAUNER 11(676'FSL & 428'FEL,SEC.26))	4955.00ft
MD Reference Pt	RIG (RKB)	Section Origin	N 0.00, E 0.00 ft
Field Vertical Reference	Mean Sea Level	Section Azimuth	269.22°



Planned Wellpath Report

LAUNER 11 (REV-B.0) PWP

Page 2 of 8



REFERENCE WELLPATH IDENTIFICATION

Operator	EXTRACTION OIL & GAS	Slot	SLOT#23 LAUNER 11(676'FSL & 428'FEL,SEC.26)
Area	COLORADO	Well	LAUNER 11
Field	WELD COUNTY (NAD83/TRUE NORTH)	Wellbore	LAUNER 11 PWB
Facility	SEC.26-T07N-R67W		

WELLPATH DATA (153 stations) † = interpolated/extrapolated station

MD [ft]	Inclination [°]	Azimuth [°]	TVD [ft]	Vert Sect [ft]	North [ft]	East [ft]	DLS [°/100ft]	Comments
0.00†	0.000	109.323	0.00	0.00	0.00	0.00	0.00	
24.00	0.000	109.323	24.00	0.00	0.00	0.00	0.00	Tie On
124.00†	0.000	109.323	124.00	0.00	0.00	0.00	0.00	
224.00†	0.000	109.323	224.00	0.00	0.00	0.00	0.00	
324.00†	0.000	109.323	324.00	0.00	0.00	0.00	0.00	
424.00†	0.000	109.323	424.00	0.00	0.00	0.00	0.00	
524.00†	0.000	109.323	524.00	0.00	0.00	0.00	0.00	
624.00†	0.000	109.323	624.00	0.00	0.00	0.00	0.00	
724.00†	0.000	109.323	724.00	0.00	0.00	0.00	0.00	
824.00†	0.000	109.323	824.00	0.00	0.00	0.00	0.00	
850.00	0.000	109.323	850.00	0.00	0.00	0.00	0.00	End of Tangent
924.00†	1.480	109.323	923.99	-0.90	-0.32	0.90	2.00	
1024.00†	3.480	109.323	1023.89	-4.96	-1.75	4.98	2.00	
1076.80	4.536	109.323	1076.56	-8.43	-2.97	8.47	2.00	End of Build
1124.00†	4.536	109.323	1123.62	-11.93	-4.20	11.99	0.00	
1224.00†	4.536	109.323	1223.30	-19.36	-6.82	19.45	0.00	
1324.00†	4.536	109.323	1322.99	-26.79	-9.44	26.92	0.00	
1424.00†	4.536	109.323	1422.68	-34.21	-12.05	34.38	0.00	
1524.00†	4.536	109.323	1522.36	-41.64	-14.67	41.84	0.00	
1624.00†	4.536	109.323	1622.05	-49.07	-17.29	49.30	0.00	
1724.00†	4.536	109.323	1721.74	-56.49	-19.91	56.77	0.00	
1824.00†	4.536	109.323	1821.42	-63.92	-22.52	64.23	0.00	
1924.00†	4.536	109.323	1921.11	-71.35	-25.14	71.69	0.00	
2024.00†	4.536	109.323	2020.80	-78.77	-27.76	79.16	0.00	
2124.00†	4.536	109.323	2120.48	-86.20	-30.37	86.62	0.00	
2224.00†	4.536	109.323	2220.17	-93.63	-32.99	94.08	0.00	
2324.00†	4.536	109.323	2319.86	-101.05	-35.61	101.55	0.00	
2424.00†	4.536	109.323	2419.54	-108.48	-38.22	109.01	0.00	
2524.00†	4.536	109.323	2519.23	-115.91	-40.84	116.47	0.00	
2624.00†	4.536	109.323	2618.92	-123.33	-43.46	123.93	0.00	



Planned Wellpath Report

LAUNER 11 (REV-B.0) PWP

Page 3 of 8



REFERENCE WELLPATH IDENTIFICATION

Operator	EXTRACTION OIL & GAS	Slot	SLOT#23 LAUNER 11(676'FSL & 428'FEL,SEC.26)
Area	COLORADO	Well	LAUNER 11
Field	WELD COUNTY (NAD83/TRUE NORTH)	Wellbore	LAUNER 11 PWB
Facility	SEC.26-T07N-R67W		

WELLPATH DATA (153 stations) † = interpolated/extrapolated station

MD [ft]	Inclination [°]	Azimuth [°]	TVD [ft]	Vert Sect [ft]	North [ft]	East [ft]	DLS [°/100ft]	Comments
2724.00†	4.536	109.323	2718.60	-130.76	-46.07	131.40	0.00	
2824.00†	4.536	109.323	2818.29	-138.19	-48.69	138.86	0.00	
2924.00†	4.536	109.323	2917.98	-145.61	-51.31	146.32	0.00	
3024.00†	4.536	109.323	3017.66	-153.04	-53.92	153.79	0.00	
3124.00†	4.536	109.323	3117.35	-160.47	-56.54	161.25	0.00	
3224.00†	4.536	109.323	3217.04	-167.89	-59.16	168.71	0.00	
3324.00†	4.536	109.323	3316.72	-175.32	-61.77	176.18	0.00	
3424.00†	4.536	109.323	3416.41	-182.75	-64.39	183.64	0.00	
3524.00†	4.536	109.323	3516.10	-190.17	-67.01	191.10	0.00	
3624.00†	4.536	109.323	3615.79	-197.60	-69.63	198.56	0.00	
3724.00†	4.536	109.323	3715.47	-205.03	-72.24	206.03	0.00	
3824.00†	4.536	109.323	3815.16	-212.45	-74.86	213.49	0.00	
3924.00†	4.536	109.323	3914.85	-219.88	-77.48	220.95	0.00	
4024.00†	4.536	109.323	4014.53	-227.31	-80.09	228.42	0.00	
4124.00†	4.536	109.323	4114.22	-234.73	-82.71	235.88	0.00	
4224.00†	4.536	109.323	4213.91	-242.16	-85.33	243.34	0.00	
4324.00†	4.536	109.323	4313.59	-249.59	-87.94	250.81	0.00	
4424.00†	4.536	109.323	4413.28	-257.01	-90.56	258.27	0.00	
4524.00†	4.536	109.323	4512.97	-264.44	-93.18	265.73	0.00	
4624.00†	4.536	109.323	4612.65	-271.87	-95.79	273.19	0.00	
4724.00†	4.536	109.323	4712.34	-279.29	-98.41	280.66	0.00	
4824.00†	4.536	109.323	4812.03	-286.72	-101.03	288.12	0.00	
4924.00†	4.536	109.323	4911.71	-294.15	-103.64	295.58	0.00	
5024.00†	4.536	109.323	5011.40	-301.57	-106.26	303.05	0.00	
5124.00†	4.536	109.323	5111.09	-309.00	-108.88	310.51	0.00	
5224.00†	4.536	109.323	5210.77	-316.43	-111.50	317.97	0.00	
5324.00†	4.536	109.323	5310.46	-323.85	-114.11	325.44	0.00	
5424.00†	4.536	109.323	5410.15	-331.28	-116.73	332.90	0.00	
5524.00†	4.536	109.323	5509.83	-338.71	-119.35	340.36	0.00	
5624.00†	4.536	109.323	5609.52	-346.13	-121.96	347.82	0.00	



Planned Wellpath Report

LAUNER 11 (REV-B.0) PWP

Page 4 of 8



REFERENCE WELLPATH IDENTIFICATION

Operator	EXTRACTION OIL & GAS	Slot	SLOT#23 LAUNER 11(676'FSL & 428'FEL,SEC.26)
Area	COLORADO	Well	LAUNER 11
Field	WELD COUNTY (NAD83/TRUE NORTH)	Wellbore	LAUNER 11 PWB
Facility	SEC.26-T07N-R67W		

WELLPATH DATA (153 stations) † = interpolated/extrapolated station

MD [ft]	Inclination [°]	Azimuth [°]	TVD [ft]	Vert Sect [ft]	North [ft]	East [ft]	DLS [°/100ft]	Comments
5724.00†	4.536	109.323	5709.21	-353.56	-124.58	355.29	0.00	
5824.00†	4.536	109.323	5808.89	-360.99	-127.20	362.75	0.00	
5924.00†	4.536	109.323	5908.58	-368.41	-129.81	370.21	0.00	
6024.00†	4.536	109.323	6008.27	-375.84	-132.43	377.68	0.00	
6124.00†	4.536	109.323	6107.95	-383.27	-135.05	385.14	0.00	
6224.00†	4.536	109.323	6207.64	-390.69	-137.66	392.60	0.00	
6324.00†	4.536	109.323	6307.33	-398.12	-140.28	400.07	0.00	
6424.00†	4.536	109.323	6407.02	-405.55	-142.90	407.53	0.00	
6436.40	4.536	109.323	6419.38	-406.47	-143.22	408.45	0.00	End of Tangent
6524.00†	4.705	252.233	6506.86	-406.29	-145.47	408.30	10.00	
6624.00†	14.542	264.741	6605.34	-389.81	-147.88	391.85	10.00	
6724.00†	24.511	267.195	6699.47	-356.47	-150.05	358.55	10.00	
6824.00†	34.497	268.283	6786.40	-307.31	-151.92	309.40	10.00	
6924.00†	44.488	268.927	6863.47	-243.79	-153.43	245.90	10.00	
7024.00†	54.483	269.375	6928.35	-167.86	-154.53	169.98	10.00	
7124.00†	64.478	269.723	6979.07	-81.83	-155.19	83.95	10.00	
7224.00†	74.474	270.017	7014.09	11.70	-155.40	-9.59	10.00	
7324.00†	84.471	270.283	7032.33	109.88	-155.14	-107.78	10.00	
7379.31	90.000	270.426	7035.00 ¹	165.09	-154.80	-163.00	10.00	End of 3D Arc
7424.00†	90.000	270.426	7035.00	209.77	-154.46	-207.69	0.00	
7524.00†	90.000	270.426	7035.00	309.75	-153.72	-307.69	0.00	
7624.00†	90.000	270.426	7035.00	409.73	-152.98	-407.68	0.00	
7724.00†	90.000	270.426	7035.00	509.70	-152.24	-507.68	0.00	
7824.00†	90.000	270.426	7035.00	609.68	-151.49	-607.68	0.00	
7924.00†	90.000	270.426	7035.00	709.66	-150.75	-707.68	0.00	
8024.00†	90.000	270.426	7035.00	809.64	-150.01	-807.67	0.00	
8124.00†	90.000	270.426	7035.00	909.62	-149.27	-907.67	0.00	
8224.00†	90.000	270.426	7035.00	1009.59	-148.52	-1007.67	0.00	
8324.00†	90.000	270.426	7035.00	1109.57	-147.78	-1107.66	0.00	
8424.00†	90.000	270.426	7035.00	1209.55	-147.04	-1207.66	0.00	



Planned Wellpath Report

LAUNER 11 (REV-B.0) PWP

Page 5 of 8



REFERENCE WELLPATH IDENTIFICATION

Operator	EXTRACTION OIL & GAS	Slot	SLOT#23 LAUNER 11(676'FSL & 428'FEL,SEC.26)
Area	COLORADO	Well	LAUNER 11
Field	WELD COUNTY (NAD83/TRUE NORTH)	Wellbore	LAUNER 11 PWB
Facility	SEC.26-T07N-R67W		

WELLPATH DATA (153 stations) † = interpolated/extrapolated station

MD [ft]	Inclination [°]	Azimuth [°]	TVD [ft]	Vert Sect [ft]	North [ft]	East [ft]	DLS [°/100ft]	Comments
8524.00†	90.000	270.426	7035.00	1309.53	-146.29	-1307.66	0.00	
8624.00†	90.000	270.426	7035.00	1409.51	-145.55	-1407.66	0.00	
8724.00†	90.000	270.426	7035.00	1509.48	-144.81	-1507.65	0.00	
8824.00†	90.000	270.426	7035.00	1609.46	-144.07	-1607.65	0.00	
8924.00†	90.000	270.426	7035.00	1709.44	-143.32	-1707.65	0.00	
9024.00†	90.000	270.426	7035.00	1809.42	-142.58	-1807.65	0.00	
9124.00†	90.000	270.426	7035.00	1909.39	-141.84	-1907.64	0.00	
9224.00†	90.000	270.426	7035.00	2009.37	-141.10	-2007.64	0.00	
9324.00†	90.000	270.426	7035.00	2109.35	-140.35	-2107.64	0.00	
9424.00†	90.000	270.426	7035.00	2209.33	-139.61	-2207.63	0.00	
9524.00†	90.000	270.426	7035.00	2309.31	-138.87	-2307.63	0.00	
9624.00†	90.000	270.426	7035.00	2409.28	-138.13	-2407.63	0.00	
9724.00†	90.000	270.426	7035.00	2509.26	-137.38	-2507.63	0.00	
9824.00†	90.000	270.426	7035.00	2609.24	-136.64	-2607.62	0.00	
9924.00†	90.000	270.426	7035.00	2709.22	-135.90	-2707.62	0.00	
10024.00†	90.000	270.426	7035.00	2809.20	-135.15	-2807.62	0.00	
10124.00†	90.000	270.426	7035.00	2909.17	-134.41	-2907.62	0.00	
10224.00†	90.000	270.426	7035.00	3009.15	-133.67	-3007.61	0.00	
10324.00†	90.000	270.426	7035.00	3109.13	-132.93	-3107.61	0.00	
10424.00†	90.000	270.426	7035.00	3209.11	-132.18	-3207.61	0.00	
10524.00†	90.000	270.426	7035.00	3309.09	-131.44	-3307.60	0.00	
10624.00†	90.000	270.426	7035.00	3409.06	-130.70	-3407.60	0.00	
10724.00†	90.000	270.426	7035.00	3509.04	-129.96	-3507.60	0.00	
10824.00†	90.000	270.426	7035.00	3609.02	-129.21	-3607.60	0.00	
10924.00†	90.000	270.426	7035.00	3709.00	-128.47	-3707.59	0.00	
11024.00†	90.000	270.426	7035.00	3808.97	-127.73	-3807.59	0.00	
11124.00†	90.000	270.426	7035.00	3908.95	-126.99	-3907.59	0.00	
11224.00†	90.000	270.426	7035.00	4008.93	-126.24	-4007.58	0.00	
11324.00†	90.000	270.426	7035.00	4108.91	-125.50	-4107.58	0.00	
11424.00†	90.000	270.426	7035.00	4208.89	-124.76	-4207.58	0.00	



Planned Wellpath Report

LAUNER 11 (REV-B.0) PWP

Page 6 of 8



REFERENCE WELLPATH IDENTIFICATION

Operator	EXTRACTION OIL & GAS	Slot	SLOT#23 LAUNER 11(676'FSL & 428'FEL,SEC.26)
Area	COLORADO	Well	LAUNER 11
Field	WELD COUNTY (NAD83/TRUE NORTH)	Wellbore	LAUNER 11 PWB
Facility	SEC.26-T07N-R67W		

WELLPATH DATA (153 stations) † = interpolated/extrapolated station

MD [ft]	Inclination [°]	Azimuth [°]	TVD [ft]	Vert Sect [ft]	North [ft]	East [ft]	DLS [°/100ft]	Comments
11524.00†	90.000	270.426	7035.00	4308.86	-124.01	-4307.58	0.00	
11624.00†	90.000	270.426	7035.00	4408.84	-123.27	-4407.57	0.00	
11724.00†	90.000	270.426	7035.00	4508.82	-122.53	-4507.57	0.00	
11824.00†	90.000	270.426	7035.00	4608.80	-121.79	-4607.57	0.00	
11924.00†	90.000	270.426	7035.00	4708.78	-121.04	-4707.57	0.00	
12024.00†	90.000	270.426	7035.00	4808.75	-120.30	-4807.56	0.00	
12124.00†	90.000	270.426	7035.00	4908.73	-119.56	-4907.56	0.00	
12224.00†	90.000	270.426	7035.00	5008.71	-118.82	-5007.56	0.00	
12324.00†	90.000	270.426	7035.00	5108.69	-118.07	-5107.55	0.00	
12424.00†	90.000	270.426	7035.00	5208.67	-117.33	-5207.55	0.00	
12524.00†	90.000	270.426	7035.00	5308.64	-116.59	-5307.55	0.00	
12624.00†	90.000	270.426	7035.00	5408.62	-115.85	-5407.55	0.00	
12724.00†	90.000	270.426	7035.00	5508.60	-115.10	-5507.54	0.00	
12824.00†	90.000	270.426	7035.00	5608.58	-114.36	-5607.54	0.00	
12924.00†	90.000	270.426	7035.00	5708.56	-113.62	-5707.54	0.00	
13024.00†	90.000	270.426	7035.00	5808.53	-112.87	-5807.54	0.00	
13124.00†	90.000	270.426	7035.00	5908.51	-112.13	-5907.53	0.00	
13224.00†	90.000	270.426	7035.00	6008.49	-111.39	-6007.53	0.00	
13324.00†	90.000	270.426	7035.00	6108.47	-110.65	-6107.53	0.00	
13424.00†	90.000	270.426	7035.00	6208.44	-109.90	-6207.52	0.00	
13524.00†	90.000	270.426	7035.00	6308.42	-109.16	-6307.52	0.00	
13624.00†	90.000	270.426	7035.00	6408.40	-108.42	-6407.52	0.00	
13724.00†	90.000	270.426	7035.00	6508.38	-107.68	-6507.52	0.00	
13824.00†	90.000	270.426	7035.00	6608.36	-106.93	-6607.51	0.00	
13924.00†	90.000	270.426	7035.00	6708.33	-106.19	-6707.51	0.00	
14024.00†	90.000	270.426	7035.00	6808.31	-105.45	-6807.51	0.00	
14124.00†	90.000	270.426	7035.00	6908.29	-104.71	-6907.50	0.00	
14224.00†	90.000	270.426	7035.00	7008.27	-103.96	-7007.50	0.00	
14324.00†	90.000	270.426	7035.00	7108.25	-103.22	-7107.50	0.00	
14424.00†	90.000	270.426	7035.00	7208.22	-102.48	-7207.50	0.00	



Planned Wellpath Report

LAUNER 11 (REV-B.0) PWP

Page 7 of 8



REFERENCE WELLPATH IDENTIFICATION

Operator	EXTRACTION OIL & GAS	Slot	SLOT#23 LAUNER 11(676'FSL & 428'FEL,SEC.26)
Area	COLORADO	Well	LAUNER 11
Field	WELD COUNTY (NAD83/TRUE NORTH)	Wellbore	LAUNER 11 PWB
Facility	SEC.26-T07N-R67W		

WELLPATH DATA (153 stations) † = interpolated/extrapolated station

MD [ft]	Inclination [°]	Azimuth [°]	TVD [ft]	Vert Sect [ft]	North [ft]	East [ft]	DLS [°/100ft]	Comments
14524.00†	90.000	270.426	7035.00	7308.20	-101.73	-7307.49	0.00	
14624.00†	90.000	270.426	7035.00	7408.18	-100.99	-7407.49	0.00	
14637.40	90.000	270.426	7035.00 ²	7421.58	-100.89	-7420.89	0.00	End of Tangent

HOLE & CASING SECTIONS - Ref Wellbore: LAUNER 11 PWB Ref Wellpath: LAUNER 11 (REV-B.0) PWP

String/Diameter	Start MD [ft]	End MD [ft]	Interval [ft]	Start TVD [ft]	End TVD [ft]	Start N/S [ft]	Start E/W [ft]	End N/S [ft]	End E/W [ft]
7in Casing Intermediate	24.00	7379.31	7355.31	24.00	7035.00	0.00	0.00	-154.80	-163.00



Planned Wellpath Report

LAUNER 11 (REV-B.0) PWP

Page 8 of 8



REFERENCE WELLPATH IDENTIFICATION

Operator	EXTRACTION OIL & GAS	Slot	SLOT#23 LAUNER 11(676'FSL & 428'FEL,SEC.26)
Area	COLORADO	Well	LAUNER 11
Field	WELD COUNTY (NAD83/TRUE NORTH)	Wellbore	LAUNER 11 PWB
Facility	SEC.26-T07N-R67W		

TARGETS

Name	MD [ft]	TVD [ft]	North [ft]	East [ft]	Grid East [US ft]	Grid North [US ft]	Latitude	Longitude	Shape
SEC.26-T07N-R67W		-17.00	4116.83	-73.92	3179860.07	1444245.18	40°33'03.784"N	104°51'09.932"W	polygon
SEC.27-T07N-R67W		-17.00	4116.83	-73.92	3179860.07	1444245.18	40°33'03.784"N	104°51'09.932"W	polygon
2) LAUNER 11 BHL ON PLAT REV-1(584'FSL & 2560'FEL,SEC.27)	14637.40	7035.00	-100.89	-7420.89	3172544.33	1439974.06	40°32'22.096"N	104°52'45.091"W	point
LAUNER 11 DRILLING CORRIDOR(60')		7035.00	0.00	0.00	3179964.05	1440129.13	40°32'23.104"N	104°51'08.975"W	polygon
LAUNER 11 LANDING		7035.00	-154.84	-32.52	3179932.66	1439974.06	40°32'21.574"N	104°51'09.396"W	point
1) LAUNER 11 LANDING REV-1	7379.31	7035.00	-154.80	-163.00	3179802.19	1439973.15	40°32'21.574"N	104°51'11.086"W	point

SURVEY PROGRAM - Ref Wellbore: LAUNER 11 PWB Ref Wellpath: LAUNER 11 (REV-B.0) PWP

Start MD [ft]	End MD [ft]	Positional Uncertainty Model	Log Name/Comment	Wellbore
24.00	15000.00	NaviTrak (Standard)		LAUNER 11 PWB