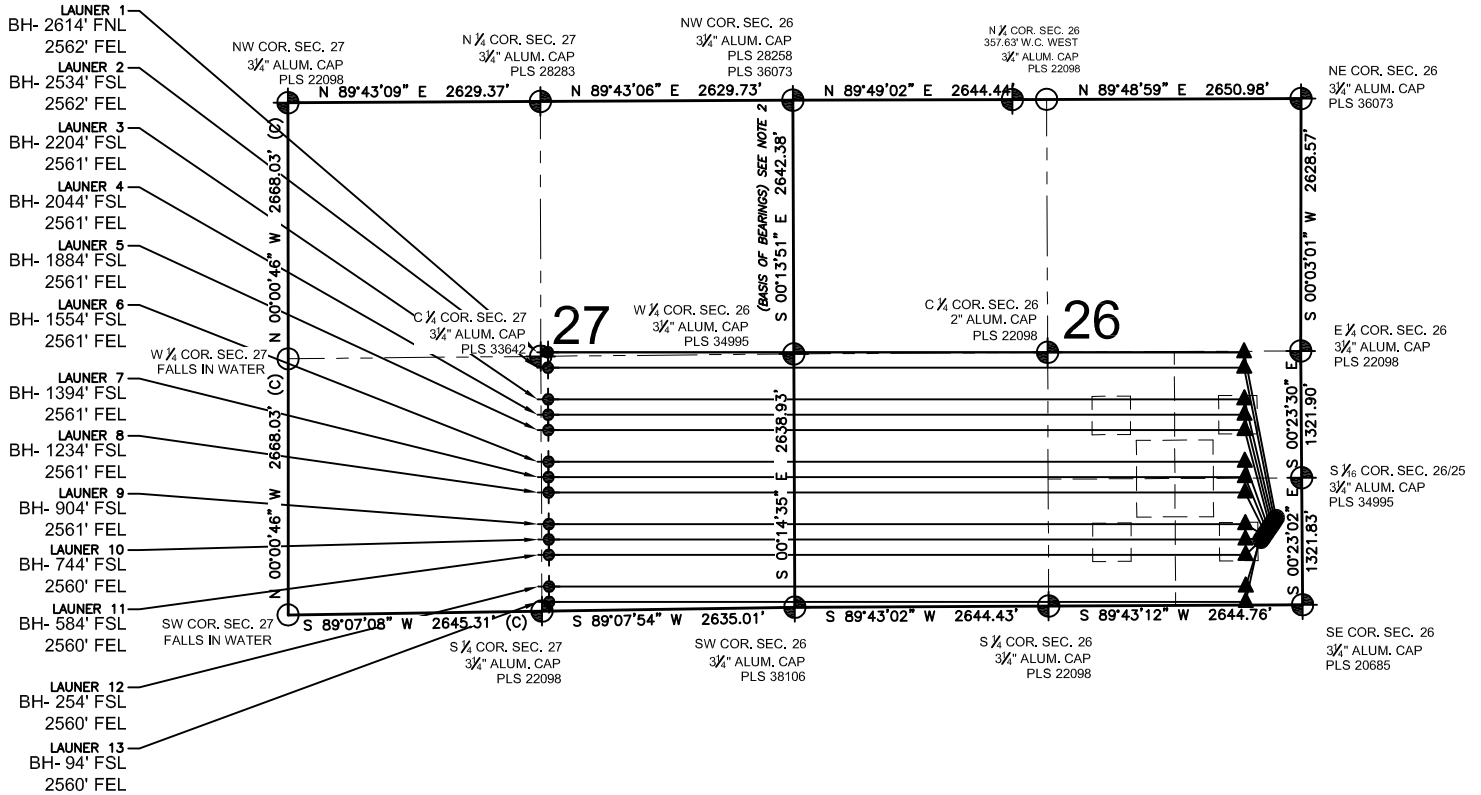


LAUNER 26-M PAD MULTI-WELL PLAN

SECTION 26, TOWNSHIP 7 NORTH, RANGE 67 WEST, 6TH P.M.



LEGEND

- ⊕ = EXISTING MONUMENT
- = CALCULATED POSITION
- = PROPOSED WELL
- ◆ = EXISTING WELL
- ⬤ = BOTTOM HOLE
- ▲ = LANDING POINT
- LP = LANDING POINT
- BH = BOTTOM HOLE

NOTES:

- LAUNER 1 TO BE AT 907' FSL, 270' FEL.
- BOTTOM HOLE AT 2614' FNL & 2562' FEL, SEC 27.
- LAUNER 2 TO BE AT 884' FSL, 285' FEL.
- BOTTOM HOLE AT 2534' FSL & 2562' FEL, SEC 27.
- LAUNER 3 TO BE AT 861' FSL, 301' FEL.
- BOTTOM HOLE AT 2204' FSL & 2561' FEL, SEC 27.
- LAUNER 4 TO BE AT 838' FSL, 317' FEL.
- BOTTOM HOLE AT 2044' FSL & 2561' FEL, SEC 27.
- LAUNER 5 TO BE AT 815' FSL, 333' FEL.
- BOTTOM HOLE AT 1884' FSL & 2561' FEL, SEC 27.
- LAUNER 6 TO BE AT 792' FSL, 349' FEL.
- BOTTOM HOLE AT 1554' FSL & 2561' FEL, SEC 27.
- LAUNER 7 TO BE AT 769' FSL, 364' FEL.
- BOTTOM HOLE AT 1394' FSL & 2561' FEL, SEC 27.
- LAUNER 8 TO BE AT 745' FSL, 380' FEL.
- BOTTOM HOLE AT 1234' FSL & 2561' FEL, SEC 27.
- LAUNER 9 TO BE AT 722' FSL, 396' FEL.
- BOTTOM HOLE AT 904' FSL & 2561' FEL, SEC 27.
- LAUNER 10 TO BE AT 699' FSL, 412' FEL.
- BOTTOM HOLE AT 744' FSL & 2560' FEL, SEC 27.
- LAUNER 11 TO BE AT 676' FSL, 428' FEL.
- BOTTOM HOLE AT 584' FSL & 2560' FEL, SEC 27.
- LAUNER 12 TO BE AT 653' FSL, 443' FEL.
- BOTTOM HOLE AT 254' FSL & 2560' FEL, SEC 27.
- LAUNER 13 TO BE AT 630' FSL, 459' FEL.
- BOTTOM HOLE AT 94' FSL & 2560' FEL, SEC 27.

NOTES:

1. THIS FIELD SURVEY CONFORMS TO THE MINIMUM STANDARDS SET BY THE C.O.G.C.C., RULE NO. 215
2. BEARINGS AND DISTANCE SHOWN HEREON ARE GRID AND BASED ON THE COLORADO STATE PLANE COORDINATE SYSTEM, NAD 83/2011 BETWEEN MONUMENTS AS LABELED HEREON AND ELEVATIONS SHOWN ARE NAVD 88, AS DERIVED BY GPS OBSERVATIONS.
3. GRID DISTANCES ARE SHOWN, AS MEASURED IN THE FIELD, WITH TIES TO WELLS MEASURED PERPENDICULAR TO SECTION LINES.

PREPARED BY:



EXTRACTION OIL & GAS

FIELD DATE: 08-29-14	PAD NAME: LAUNER 26-M
DRAWING DATE: 12-05-14	SURFACE LOCATION: SE 1/4 SE 1/4, SEC. 26, T7N, R67W, 6TH P.M.
BY: MDCA	CHECKED: SJK
WELD COUNTY, COLORADO	

