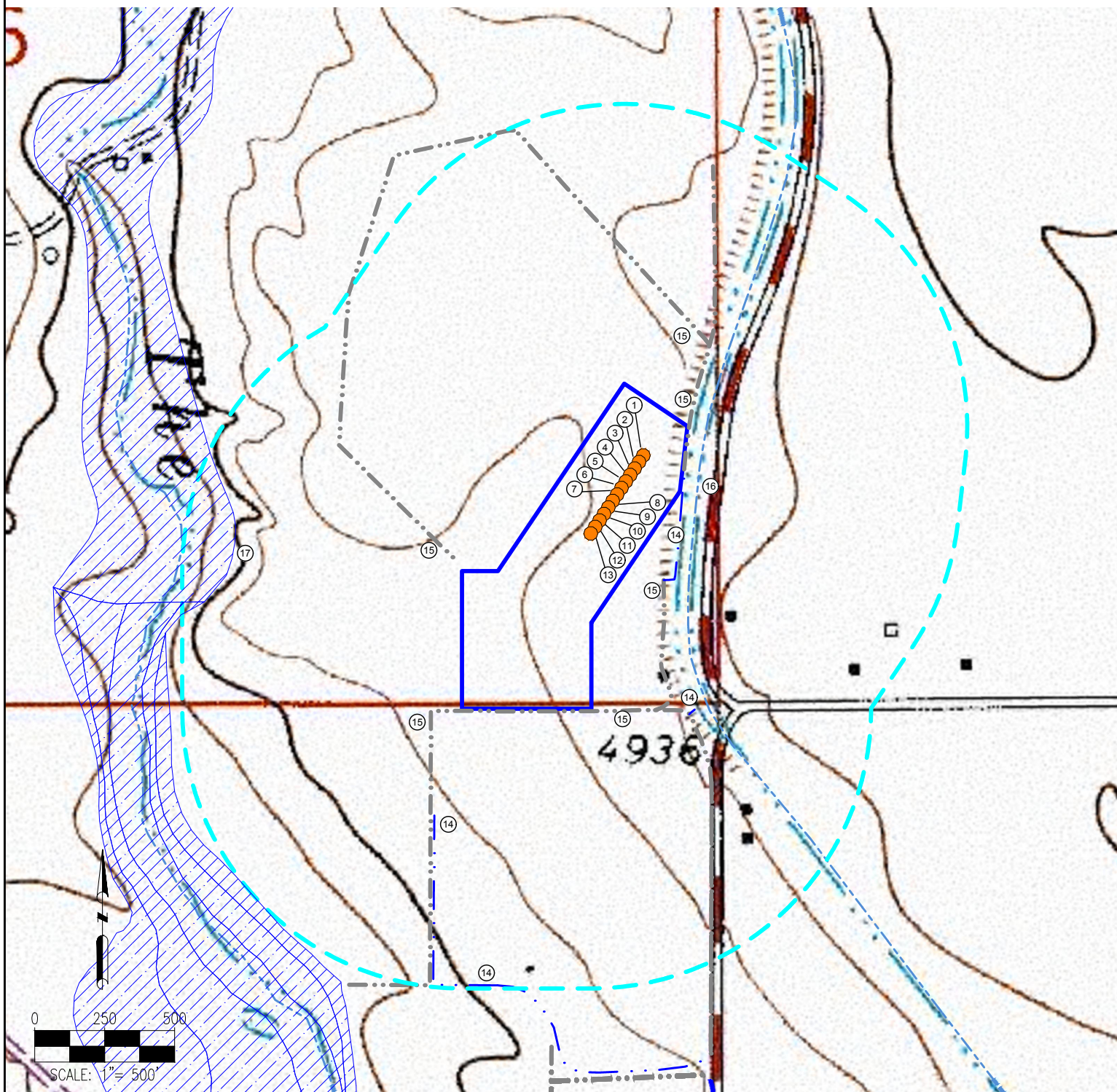


# LAUNER 26-M PAD HYDROLOGY MAP



MEASUREMENTS ARE MADE FROM THE NEAREST EDGE OF THE DISTURBANCE AREA.

- |             |               |  |
|-------------|---------------|--|
| 1. LAUNER 1 | 7. LAUNER 7   | 13. LAUNER 13  |
| 2. LAUNER 2 | 8. LAUNER 8   | 14. DITCHES ARE $\pm 6'$ E, $\pm 350'$ E, $\pm 987'$ S, $\pm 394'$ SW                                      |
| 3. LAUNER 3 | 9. LAUNER 9   | 15. CONCRETE DITCHES ARE $\pm 285'$ NE, $\pm 4'$ E, $\pm 129'$ SE, $\pm 7'$ S, $\pm 112'$ SW, $\pm 55'$ NW |
| 4. LAUNER 4 | 10. LAUNER 10 | 16. LARIMER AND WELD CANAL IS $\pm 60'$ E  |
| 5. LAUNER 5 | 11. LAUNER 11 | 17. FLOODPLAIN IS $\pm 818'$ NW  |
| 6. LAUNER 6 | 12. LAUNER 12 |  |

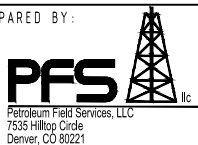
**LEGEND:**

- |                  |                    |                  |
|------------------|--------------------|------------------|
| = PROPOSED WELL  | = DITCH            | = FLOODPLAIN     |
| = CANAL          | = DISTURBANCE AREA | = CONCRETE DITCH |
| = CONCRETE DITCH | = 1000' RADIUS     |                  |

DISCLAIMER:  
THIS PLOT DOES NOT REPRESENT A MONUMENTED LAND SURVEY AND SHOULD NOT BE RELIED UPON TO DETERMINE BOUNDARY LINES, PROPERTY OWNERSHIP OR OTHER PROPERTY INTERESTS. PARCEL LINES, IF DEPICTED HAVE NOT BEEN FIELD VERIFIED AND MAY BE BASED UPON PUBLICLY AVAILABLE DATA THAT ALSO HAS NOT BEEN INDEPENDENTLY VERIFIED.

DATA SOURCE:  
TOPO MAP: USGS  
NHD: USGS  
  
PUBLICLY AVAILABLE DATA SOURCES HAVE NOT BEEN INDEPENDENTLY VERIFIED BY PFS.

PREPARED BY:



FIELD DATE:  
08-29-14

DRAWING DATE:  
11-08-16

BY:  
IJM

CHECKED BY:  
CSG

SITE NAME:  
LAUNER 26-M PAD

SURFACE LOCATION:  
SE 1/4 SE 1/4 SEC. 26, T7N, R67W, 6TH P.M.  
WELD COUNTY, COLORADO

PREPARED FOR:

