

EXTRACTION OIL & GAS

Location: COLORADO Slot: SLOT#21 LAUNER 9(722'FSL & 396'FEL,SEC.26)
Field: WELD COUNTY (NAD83/TRUE NORTH) Well: LAUNER 9
Facility: SEC.26-T07N-R67W Wellbore: LAUNER 9 PWB

Plot reference wellpath is LAUNER 9 (REV-B.0) PWP

True vertical depths are referenced to RIG (RKB)	Grid System: NAD83 / Lambert Colorado SP, Northern Zone (501), US feet
Measured depths are referenced to RIG (RKB)	North Reference: True north
RIG (RKB) to Mean Sea Level: 4955 feet	Scale: True distance
Mean Sea Level to Mud line (At Slot: SLOT#21 LAUNER 9(722'FSL & 396'FEL,SEC.26)): 0 feet	Depths are in feet
Coordinates are in feet referenced to Slot	Created by: painsett on 10/7/2014

Location Information

Facility Name			Grid East (US ft)	Grid North (US ft)	Latitude	Longitude
SEC.26-T07N-R67W			3179860.101	1444245.219	40°33'03.784"N	104°51'09.932"W
Slot	Local N (ft)	Local E (ft)	Grid East (US ft)	Grid North (US ft)	Latitude	Longitude
SLOT#21 LAUNER 9(722'FSL & 396'FEL,SEC.26)	-4070.60	105.59	3179995.393	1440175.626	40°32'23.561"N	104°51'08.564"W
RIG (RKB) to Mud line (At Slot: SLOT#21 LAUNER 9(722'FSL & 396'FEL,SEC.26))			4955ft			
Mean Sea Level to Mud line (At Slot: SLOT#21 LAUNER 9(722'FSL & 396'FEL,SEC.26))			0ft			
RIG (RKB) to Mean Sea Level			4955ft			

Targets

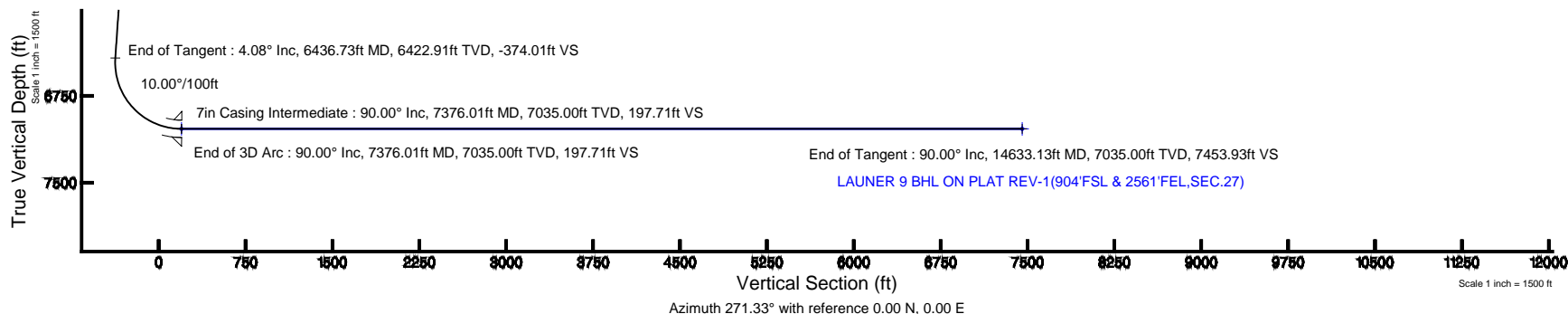
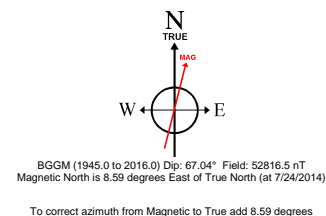
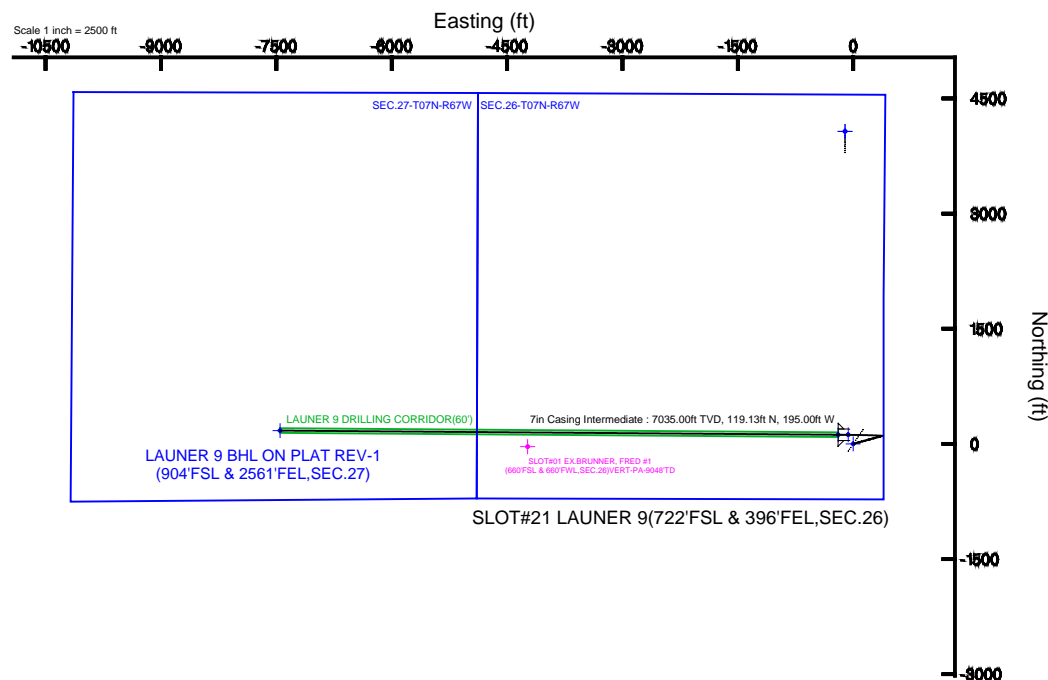
Name	MD (ft)	TVD (ft)	Local N (ft)	Local E (ft)	Grid East (US ft)	Grid North (US ft)	Latitude	Longitude
SEC.26-T07N-R67W		-17.00	4070.56	-105.60	3179860.07	1444245.18	40°33'03.784"N	104°51'09.932"W
SEC.27-T07N-R67W		-17.00	4070.56	-105.60	3179860.07	1444245.18	40°33'03.784"N	104°51'09.932"W
LAUNER 9 BHL ON PLAT REV-1(904'FSL & 2561'FEL,SEC.27)	14633.13	7035.00	173.09	-7451.92	3172542.65	1440294.28	40°32'25.260"N	104°52'45.084"W
LAUNER 9 DRILLING CORRIDOR(60')		7035.00	0.00	0.00	3179995.39	1440175.63	40°32'23.561"N	104°51'08.564"W
LAUNER 9 LANDING		7035.00	119.13	-64.20	3179930.32	1440294.28	40°32'24.738"N	104°51'09.396"W
LAUNER 9 LANDING REV-1	7376.01	7035.00	119.13	-195.00	3179799.63	1440293.33	40°32'24.738"N	104°51'11.090"W

Survey Program

Start MD (ft)	End MD (ft)	Tool	Model	Log Name/Comment	Wellbore
24.00	15000.00	NaviTrak	NaviTrak (Standard)		LAUNER 9 PWB

Well Profile Data

Design Comment	MD (ft)	Inc (°)	Az (°)	TVD (ft)	Local N (ft)	Local E (ft)	DLS (°/100ft)	VS (ft)
Tie On	24.00	0.000	74.694	24.00	0.00	0.00	0.00	0.00
End of Tangent	850.00	0.000	74.694	850.00	0.00	0.00	0.00	0.00
End of Build	1054.06	4.081	74.694	1053.89	1.92	7.01	2.00	-6.96
End of Tangent	6436.73	4.081	74.694	6422.91	103.04	376.51	0.00	-374.01
End of 3D Arc	7376.01	90.000	270.426	7035.00	119.13	-195.00	10.00	197.71
End of Tangent	14633.13	90.000	270.426	7035.00	173.09	-7451.92	0.00	7453.93





Planned Wellpath Report

LAUNER 9 (REV-B.0) PWP

Page 1 of 8



REFERENCE WELLPATH IDENTIFICATION

Operator	EXTRACTION OIL & GAS	Slot	SLOT#21 LAUNER 9(722'FSL & 396'FEL,SEC.26)
Area	COLORADO	Well	LAUNER 9
Field	WELD COUNTY (NAD83/TRUE NORTH)	Wellbore	LAUNER 9 PWB
Facility	SEC.26-T07N-R67W		

REPORT SETUP INFORMATION

Projection System	NAD83 / Lambert Colorado SP, Northern Zone (501), US feet	Software System	WellArchitect® 4.0.0
North Reference	True	User	Painsetr
Scale	0.99997	Report Generated	10/7/2014 at 2:00:32 PM
Convergence at slot	n/a	Database/Source file	WA_Denver/LAUNER_9_PWB.xml

WELLPATH LOCATION

	Local coordinates		Grid coordinates		Geographic coordinates	
	North[ft]	East[ft]	Easting[US ft]	Northing[US ft]	Latitude	Longitude
Slot Location	-4070.60	105.59	3179995.39	1440175.63	40°32'23.561"N	104°51'08.564"W
Facility Reference Pt			3179860.10	1444245.22	40°33'03.784"N	104°51'09.932"W
Field Reference Pt			3185481.27	1419166.81	40°28'55.560"N	104°49'59.556"W

WELLPATH DATUM

Calculation method	Minimum curvature	RIG (RKB) to Facility Vertical Datum	4955.00ft
Horizontal Reference Pt	Slot	RIG (RKB) to Mean Sea Level	4955.00ft
Vertical Reference Pt	RIG (RKB)	RIG (RKB) to Mud Line at Slot (SLOT#21 LAUNER 9(722'FSL & 396'FEL,SEC.26))	4955.00ft
MD Reference Pt	RIG (RKB)	Section Origin	N 0.00, E 0.00 ft
Field Vertical Reference	Mean Sea Level	Section Azimuth	271.33°



Planned Wellpath Report

LAUNER 9 (REV-B.0) PWP

Page 2 of 8



REFERENCE WELLPATH IDENTIFICATION

Operator	EXTRACTION OIL & GAS	Slot	SLOT#21 LAUNER 9(722'FSL & 396'FEL,SEC.26)
Area	COLORADO	Well	LAUNER 9
Field	WELD COUNTY (NAD83/TRUE NORTH)	Wellbore	LAUNER 9 PWB
Facility	SEC.26-T07N-R67W		

WELLPATH DATA (153 stations) † = interpolated/extrapolated station

MD [ft]	Inclination [°]	Azimuth [°]	TVD [ft]	Vert Sect [ft]	North [ft]	East [ft]	DLS [°/100ft]	Comments
0.00†	0.000	74.694	0.00	0.00	0.00	0.00	0.00	
24.00	0.000	74.694	24.00	0.00	0.00	0.00	0.00	Tie On
124.00†	0.000	74.694	124.00	0.00	0.00	0.00	0.00	
224.00†	0.000	74.694	224.00	0.00	0.00	0.00	0.00	
324.00†	0.000	74.694	324.00	0.00	0.00	0.00	0.00	
424.00†	0.000	74.694	424.00	0.00	0.00	0.00	0.00	
524.00†	0.000	74.694	524.00	0.00	0.00	0.00	0.00	
624.00†	0.000	74.694	624.00	0.00	0.00	0.00	0.00	
724.00†	0.000	74.694	724.00	0.00	0.00	0.00	0.00	
824.00†	0.000	74.694	824.00	0.00	0.00	0.00	0.00	
850.00	0.000	74.694	850.00	0.00	0.00	0.00	0.00	End of Tangent
924.00†	1.480	74.694	923.99	-0.92	0.25	0.92	2.00	
1024.00†	3.480	74.694	1023.89	-5.06	1.39	5.10	2.00	
1054.06	4.081	74.694	1053.89	-6.96	1.92	7.01	2.00	End of Build
1124.00†	4.081	74.694	1123.65	-11.73	3.23	11.81	0.00	
1224.00†	4.081	74.694	1223.40	-18.55	5.11	18.67	0.00	
1324.00†	4.081	74.694	1323.14	-25.37	6.99	25.54	0.00	
1424.00†	4.081	74.694	1422.89	-32.19	8.87	32.40	0.00	
1524.00†	4.081	74.694	1522.64	-39.01	10.75	39.27	0.00	
1624.00†	4.081	74.694	1622.38	-45.83	12.63	46.13	0.00	
1724.00†	4.081	74.694	1722.13	-52.64	14.50	53.00	0.00	
1824.00†	4.081	74.694	1821.88	-59.46	16.38	59.86	0.00	
1924.00†	4.081	74.694	1921.62	-66.28	18.26	66.73	0.00	
2024.00†	4.081	74.694	2021.37	-73.10	20.14	73.59	0.00	
2124.00†	4.081	74.694	2121.11	-79.92	22.02	80.45	0.00	
2224.00†	4.081	74.694	2220.86	-86.74	23.90	87.32	0.00	
2324.00†	4.081	74.694	2320.61	-93.56	25.78	94.18	0.00	
2424.00†	4.081	74.694	2420.35	-100.38	27.65	101.05	0.00	
2524.00†	4.081	74.694	2520.10	-107.20	29.53	107.91	0.00	
2624.00†	4.081	74.694	2619.85	-114.02	31.41	114.78	0.00	



Planned Wellpath Report

LAUNER 9 (REV-B.0) PWP

Page 3 of 8



REFERENCE WELLPATH IDENTIFICATION			
Operator	EXTRACTION OIL & GAS	Slot	SLOT#21 LAUNER 9(722'FSL & 396'FEL,SEC.26)
Area	COLORADO	Well	LAUNER 9
Field	WELD COUNTY (NAD83/TRUE NORTH)	Wellbore	LAUNER 9 PWB
Facility	SEC.26-T07N-R67W		

WELLPATH DATA (153 stations) † = interpolated/extrapolated station								
MD [ft]	Inclination [°]	Azimuth [°]	TVD [ft]	Vert Sect [ft]	North [ft]	East [ft]	DLS [°/100ft]	Comments
2724.00†	4.081	74.694	2719.59	-120.84	33.29	121.64	0.00	
2824.00†	4.081	74.694	2819.34	-127.66	35.17	128.51	0.00	
2924.00†	4.081	74.694	2919.09	-134.47	37.05	135.37	0.00	
3024.00†	4.081	74.694	3018.83	-141.29	38.93	142.24	0.00	
3124.00†	4.081	74.694	3118.58	-148.11	40.81	149.10	0.00	
3224.00†	4.081	74.694	3218.32	-154.93	42.68	155.97	0.00	
3324.00†	4.081	74.694	3318.07	-161.75	44.56	162.83	0.00	
3424.00†	4.081	74.694	3417.82	-168.57	46.44	169.69	0.00	
3524.00†	4.081	74.694	3517.56	-175.39	48.32	176.56	0.00	
3624.00†	4.081	74.694	3617.31	-182.21	50.20	183.42	0.00	
3724.00†	4.081	74.694	3717.06	-189.03	52.08	190.29	0.00	
3824.00†	4.081	74.694	3816.80	-195.85	53.96	197.15	0.00	
3924.00†	4.081	74.694	3916.55	-202.67	55.84	204.02	0.00	
4024.00†	4.081	74.694	4016.30	-209.49	57.71	210.88	0.00	
4124.00†	4.081	74.694	4116.04	-216.30	59.59	217.75	0.00	
4224.00†	4.081	74.694	4215.79	-223.12	61.47	224.61	0.00	
4324.00†	4.081	74.694	4315.54	-229.94	63.35	231.48	0.00	
4424.00†	4.081	74.694	4415.28	-236.76	65.23	238.34	0.00	
4524.00†	4.081	74.694	4515.03	-243.58	67.11	245.21	0.00	
4624.00†	4.081	74.694	4614.77	-250.40	68.99	252.07	0.00	
4724.00†	4.081	74.694	4714.52	-257.22	70.87	258.94	0.00	
4824.00†	4.081	74.694	4814.27	-264.04	72.74	265.80	0.00	
4924.00†	4.081	74.694	4914.01	-270.86	74.62	272.66	0.00	
5024.00†	4.081	74.694	5013.76	-277.68	76.50	279.53	0.00	
5124.00†	4.081	74.694	5113.51	-284.50	78.38	286.39	0.00	
5224.00†	4.081	74.694	5213.25	-291.32	80.26	293.26	0.00	
5324.00†	4.081	74.694	5313.00	-298.13	82.14	300.12	0.00	
5424.00†	4.081	74.694	5412.75	-304.95	84.02	306.99	0.00	
5524.00†	4.081	74.694	5512.49	-311.77	85.89	313.85	0.00	
5624.00†	4.081	74.694	5612.24	-318.59	87.77	320.72	0.00	



Planned Wellpath Report

LAUNER 9 (REV-B.0) PWP

Page 4 of 8



REFERENCE WELLPATH IDENTIFICATION

Operator	EXTRACTION OIL & GAS	Slot	SLOT#21 LAUNER 9(722'FSL & 396'FEL,SEC.26)
Area	COLORADO	Well	LAUNER 9
Field	WELD COUNTY (NAD83/TRUE NORTH)	Wellbore	LAUNER 9 PWB
Facility	SEC.26-T07N-R67W		

WELLPATH DATA (153 stations) † = interpolated/extrapolated station

MD [ft]	Inclination [°]	Azimuth [°]	TVD [ft]	Vert Sect [ft]	North [ft]	East [ft]	DLS [°/100ft]	Comments
5724.00†	4.081	74.694	5711.99	-325.41	89.65	327.58	0.00	
5824.00†	4.081	74.694	5811.73	-332.23	91.53	334.45	0.00	
5924.00†	4.081	74.694	5911.48	-339.05	93.41	341.31	0.00	
6024.00†	4.081	74.694	6011.22	-345.87	95.29	348.18	0.00	
6124.00†	4.081	74.694	6110.97	-352.69	97.17	355.04	0.00	
6224.00†	4.081	74.694	6210.72	-359.51	99.05	361.90	0.00	
6324.00†	4.081	74.694	6310.46	-366.33	100.92	368.77	0.00	
6424.00†	4.081	74.694	6410.21	-373.15	102.80	375.63	0.00	
6436.73	4.081	74.694	6422.91	-374.01	103.04	376.51	0.00	End of Tangent
6524.00†	4.925	283.400	6510.07	-373.32	104.73	375.86	10.00	
6624.00†	14.840	274.613	6608.47	-356.30	106.76	358.87	10.00	
6724.00†	24.822	272.823	6702.42	-322.45	108.83	325.06	10.00	
6824.00†	34.814	272.020	6789.08	-272.79	110.88	275.44	10.00	
6924.00†	44.810	271.542	6865.79	-208.85	112.84	211.53	10.00	
7024.00†	54.807	271.208	6930.25	-132.56	114.65	135.26	10.00	
7124.00†	64.804	270.947	6980.48	-46.23	116.26	48.95	10.00	
7224.00†	74.802	270.727	7014.96	47.49	117.63	-44.77	10.00	
7324.00†	84.800	270.527	7032.64	145.78	118.70	-143.06	10.00	
7376.01	90.000	270.426	7035.00 ¹	197.71	119.13	-195.00	10.00	End of 3D Arc
7424.00†	90.000	270.426	7035.00	245.70	119.49	-242.99	0.00	
7524.00†	90.000	270.426	7035.00	345.69	120.23	-342.99	0.00	
7624.00†	90.000	270.426	7035.00	445.67	120.98	-442.98	0.00	
7724.00†	90.000	270.426	7035.00	545.66	121.72	-542.98	0.00	
7824.00†	90.000	270.426	7035.00	645.65	122.46	-642.98	0.00	
7924.00†	90.000	270.426	7035.00	745.64	123.21	-742.98	0.00	
8024.00†	90.000	270.426	7035.00	845.62	123.95	-842.97	0.00	
8124.00†	90.000	270.426	7035.00	945.61	124.69	-942.97	0.00	
8224.00†	90.000	270.426	7035.00	1045.60	125.44	-1042.97	0.00	
8324.00†	90.000	270.426	7035.00	1145.59	126.18	-1142.96	0.00	
8424.00†	90.000	270.426	7035.00	1245.57	126.92	-1242.96	0.00	



Planned Wellpath Report

LAUNER 9 (REV-B.0) PWP

Page 5 of 8



REFERENCE WELLPATH IDENTIFICATION

Operator	EXTRACTION OIL & GAS	Slot	SLOT#21 LAUNER 9(722'FSL & 396'FEL,SEC.26)
Area	COLORADO	Well	LAUNER 9
Field	WELD COUNTY (NAD83/TRUE NORTH)	Wellbore	LAUNER 9 PWB
Facility	SEC.26-T07N-R67W		

WELLPATH DATA (153 stations) † = interpolated/extrapolated station

MD [ft]	Inclination [°]	Azimuth [°]	TVD [ft]	Vert Sect [ft]	North [ft]	East [ft]	DLS [°/100ft]	Comments
8524.00†	90.000	270.426	7035.00	1345.56	127.67	-1342.96	0.00	
8624.00†	90.000	270.426	7035.00	1445.55	128.41	-1442.96	0.00	
8724.00†	90.000	270.426	7035.00	1545.54	129.15	-1542.95	0.00	
8824.00†	90.000	270.426	7035.00	1645.52	129.90	-1642.95	0.00	
8924.00†	90.000	270.426	7035.00	1745.51	130.64	-1742.95	0.00	
9024.00†	90.000	270.426	7035.00	1845.50	131.39	-1842.94	0.00	
9124.00†	90.000	270.426	7035.00	1945.49	132.13	-1942.94	0.00	
9224.00†	90.000	270.426	7035.00	2045.47	132.87	-2042.94	0.00	
9324.00†	90.000	270.426	7035.00	2145.46	133.62	-2142.94	0.00	
9424.00†	90.000	270.426	7035.00	2245.45	134.36	-2242.93	0.00	
9524.00†	90.000	270.426	7035.00	2345.44	135.10	-2342.93	0.00	
9624.00†	90.000	270.426	7035.00	2445.42	135.85	-2442.93	0.00	
9724.00†	90.000	270.426	7035.00	2545.41	136.59	-2542.93	0.00	
9824.00†	90.000	270.426	7035.00	2645.40	137.33	-2642.92	0.00	
9924.00†	90.000	270.426	7035.00	2745.39	138.08	-2742.92	0.00	
10024.00†	90.000	270.426	7035.00	2845.37	138.82	-2842.92	0.00	
10124.00†	90.000	270.426	7035.00	2945.36	139.56	-2942.91	0.00	
10224.00†	90.000	270.426	7035.00	3045.35	140.31	-3042.91	0.00	
10324.00†	90.000	270.426	7035.00	3145.34	141.05	-3142.91	0.00	
10424.00†	90.000	270.426	7035.00	3245.32	141.79	-3242.91	0.00	
10524.00†	90.000	270.426	7035.00	3345.31	142.54	-3342.90	0.00	
10624.00†	90.000	270.426	7035.00	3445.30	143.28	-3442.90	0.00	
10724.00†	90.000	270.426	7035.00	3545.29	144.02	-3542.90	0.00	
10824.00†	90.000	270.426	7035.00	3645.27	144.77	-3642.90	0.00	
10924.00†	90.000	270.426	7035.00	3745.26	145.51	-3742.89	0.00	
11024.00†	90.000	270.426	7035.00	3845.25	146.25	-3842.89	0.00	
11124.00†	90.000	270.426	7035.00	3945.24	147.00	-3942.89	0.00	
11224.00†	90.000	270.426	7035.00	4045.22	147.74	-4042.88	0.00	
11324.00†	90.000	270.426	7035.00	4145.21	148.48	-4142.88	0.00	
11424.00†	90.000	270.426	7035.00	4245.20	149.23	-4242.88	0.00	



Planned Wellpath Report

LAUNER 9 (REV-B.0) PWP

Page 6 of 8



REFERENCE WELLPATH IDENTIFICATION

Operator	EXTRACTION OIL & GAS	Slot	SLOT#21 LAUNER 9(722'FSL & 396'FEL,SEC.26)
Area	COLORADO	Well	LAUNER 9
Field	WELD COUNTY (NAD83/TRUE NORTH)	Wellbore	LAUNER 9 PWB
Facility	SEC.26-T07N-R67W		

WELLPATH DATA (153 stations) † = interpolated/extrapolated station

MD [ft]	Inclination [°]	Azimuth [°]	TVD [ft]	Vert Sect [ft]	North [ft]	East [ft]	DLS [°/100ft]	Comments
11524.00†	90.000	270.426	7035.00	4345.19	149.97	-4342.88	0.00	
11624.00†	90.000	270.426	7035.00	4445.17	150.71	-4442.87	0.00	
11724.00†	90.000	270.426	7035.00	4545.16	151.46	-4542.87	0.00	
11824.00†	90.000	270.426	7035.00	4645.15	152.20	-4642.87	0.00	
11924.00†	90.000	270.426	7035.00	4745.14	152.95	-4742.86	0.00	
12024.00†	90.000	270.426	7035.00	4845.12	153.69	-4842.86	0.00	
12124.00†	90.000	270.426	7035.00	4945.11	154.43	-4942.86	0.00	
12224.00†	90.000	270.426	7035.00	5045.10	155.18	-5042.86	0.00	
12324.00†	90.000	270.426	7035.00	5145.09	155.92	-5142.85	0.00	
12424.00†	90.000	270.426	7035.00	5245.07	156.66	-5242.85	0.00	
12524.00†	90.000	270.426	7035.00	5345.06	157.41	-5342.85	0.00	
12624.00†	90.000	270.426	7035.00	5445.05	158.15	-5442.85	0.00	
12724.00†	90.000	270.426	7035.00	5545.04	158.89	-5542.84	0.00	
12824.00†	90.000	270.426	7035.00	5645.03	159.64	-5642.84	0.00	
12924.00†	90.000	270.426	7035.00	5745.01	160.38	-5742.84	0.00	
13024.00†	90.000	270.426	7035.00	5845.00	161.12	-5842.83	0.00	
13124.00†	90.000	270.426	7035.00	5944.99	161.87	-5942.83	0.00	
13224.00†	90.000	270.426	7035.00	6044.98	162.61	-6042.83	0.00	
13324.00†	90.000	270.426	7035.00	6144.96	163.35	-6142.83	0.00	
13424.00†	90.000	270.426	7035.00	6244.95	164.10	-6242.82	0.00	
13524.00†	90.000	270.426	7035.00	6344.94	164.84	-6342.82	0.00	
13624.00†	90.000	270.426	7035.00	6444.93	165.58	-6442.82	0.00	
13724.00†	90.000	270.426	7035.00	6544.91	166.33	-6542.81	0.00	
13824.00†	90.000	270.426	7035.00	6644.90	167.07	-6642.81	0.00	
13924.00†	90.000	270.426	7035.00	6744.89	167.81	-6742.81	0.00	
14024.00†	90.000	270.426	7035.00	6844.88	168.56	-6842.81	0.00	
14124.00†	90.000	270.426	7035.00	6944.86	169.30	-6942.80	0.00	
14224.00†	90.000	270.426	7035.00	7044.85	170.04	-7042.80	0.00	
14324.00†	90.000	270.426	7035.00	7144.84	170.79	-7142.80	0.00	
14424.00†	90.000	270.426	7035.00	7244.83	171.53	-7242.80	0.00	



Planned Wellpath Report

LAUNER 9 (REV-B.0) PWP

Page 7 of 8



REFERENCE WELLPATH IDENTIFICATION

Operator	EXTRACTION OIL & GAS	Slot	SLOT#21 LAUNER 9(722'FSL & 396'FEL,SEC.26)
Area	COLORADO	Well	LAUNER 9
Field	WELD COUNTY (NAD83/TRUE NORTH)	Wellbore	LAUNER 9 PWB
Facility	SEC.26-T07N-R67W		

WELLPATH DATA (153 stations) † = interpolated/extrapolated station

MD [ft]	Inclination [°]	Azimuth [°]	TVD [ft]	Vert Sect [ft]	North [ft]	East [ft]	DLS [°/100ft]	Comments
14524.00†	90.000	270.426	7035.00	7344.81	172.27	-7342.79	0.00	
14624.00†	90.000	270.426	7035.00	7444.80	173.02	-7442.79	0.00	
14633.13	90.000	270.426	7035.00 ²	7453.93	173.09	-7451.92	0.00	End of Tangent

HOLE & CASING SECTIONS - Ref Wellbore: LAUNER 9 PWB Ref Wellpath: LAUNER 9 (REV-B.0) PWP

String/Diameter	Start MD [ft]	End MD [ft]	Interval [ft]	Start TVD [ft]	End TVD [ft]	Start N/S [ft]	Start E/W [ft]	End N/S [ft]	End E/W [ft]
7in Casing Intermediate	24.00	7376.01	7352.01	24.00	7035.00	0.00	0.00	119.13	-195.00



Planned Wellpath Report

LAUNER 9 (REV-B.0) PWP

Page 8 of 8



REFERENCE WELLPATH IDENTIFICATION			
Operator	EXTRACTION OIL & GAS	Slot	SLOT#21 LAUNER 9(722'FSL & 396'FEL,SEC.26)
Area	COLORADO	Well	LAUNER 9
Field	WELD COUNTY (NAD83/TRUE NORTH)	Wellbore	LAUNER 9 PWB
Facility	SEC.26-T07N-R67W		

TARGETS									
Name	MD [ft]	TVD [ft]	North [ft]	East [ft]	Grid East [US ft]	Grid North [US ft]	Latitude	Longitude	Shape
SEC.26-T07N-R67W		-17.00	4070.56	-105.60	3179860.07	1444245.18	40°33'03.784"N	104°51'09.932"W	polygon
SEC.27-T07N-R67W		-17.00	4070.56	-105.60	3179860.07	1444245.18	40°33'03.784"N	104°51'09.932"W	polygon
2) LAUNER 9 BHL ON PLAT REV-1(904'FSL & 2561'FEL,SEC.27)	14633.13	7035.00	173.09	-7451.92	3172542.65	1440294.28	40°32'25.260"N	104°52'45.084"W	point
LAUNER 9 DRILLING CORRIDOR(60')		7035.00	0.00	0.00	3179995.39	1440175.63	40°32'23.561"N	104°51'08.564"W	polygon
LAUNER 9 LANDING		7035.00	119.13	-64.20	3179930.32	1440294.28	40°32'24.738"N	104°51'09.396"W	point
1) LAUNER 9 LANDING REV-1	7376.01	7035.00	119.13	-195.00	3179799.53	1440293.33	40°32'24.738"N	104°51'11.090"W	point

SURVEY PROGRAM - Ref Wellbore: LAUNER 9 PWB Ref Wellpath: LAUNER 9 (REV-B.0) PWP				
Start MD [ft]	End MD [ft]	Positional Uncertainty Model	Log Name/Comment	Wellbore
24.00	15000.00	NaviTrak (Standard)		LAUNER 9 PWB