

EXTRACTION OIL & GAS

Location: COLORADO Slot: SLOT#20 LAUNER 8(745'FSL & 380'FEL,SEC.26)
Field: WELD COUNTY (NAD83/TRUE NORTH) Well: LAUNER 8
Facility: SEC.26-T07N-R67W Wellbore: LAUNER 8 PWB

Plot reference wellpath is LAUNER 8 (REV-B.0) PWP

True vertical depths are referenced to RIG (RKB)	Grid System: NAD83 / Lambert Colorado SP, Northern Zone (501), US feet
Measured depths are referenced to RIG (RKB)	North Reference: True north
RIG (RKB) to Mean Sea Level: 4955 feet	Scale: True distance
Mean Sea Level to Mud line (At Slot: SLOT#20 LAUNER 8(745'FSL & 380'FEL,SEC.26)): 0 feet	Depths are in feet
Coordinates are in feet referenced to Slot	Created by: painsett on 10/7/2014

Location Information

Facility Name			Grid East (US ft)	Grid North (US ft)	Latitude	Longitude
SEC.26-T07N-R67W			3179860.101	1444245.219	40°33'03.784"N	104°51'09.932"W
Slot	Local N (ft)	Local E (ft)	Grid East (US ft)	Grid North (US ft)	Latitude	Longitude
SLOT#20 LAUNER 8(745'FSL & 380'FEL,SEC.26)	-4047.65	121.15	3180010.789	1440198.690	40°32'23.788"N	104°51'08.363"W
RIG (RKB) to Mud line (At Slot: SLOT#20 LAUNER 8(745'FSL & 380'FEL,SEC.26))					4955ft	
Mean Sea Level to Mud line (At Slot: SLOT#20 LAUNER 8(745'FSL & 380'FEL,SEC.26))					0ft	
RIG (RKB) to Mean Sea Level					4955ft	

Targets

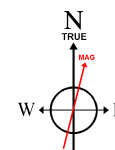
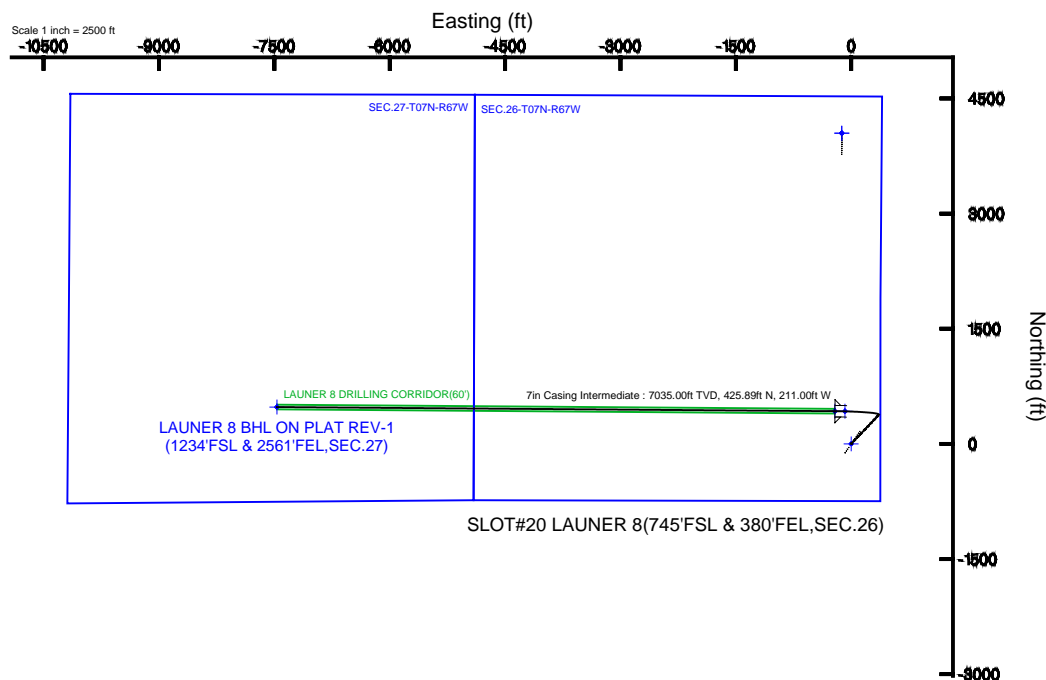
Name	MD (ft)	TVD (ft)	Local N (ft)	Local E (ft)	Grid East (US ft)	Grid North (US ft)	Latitude	Longitude
SEC.26-T07N-R67W		-17.00	4047.61	-121.16	3179860.07	1444245.18	40°33'03.784"N	104°51'09.932"W
SEC.27-T07N-R67W		-17.00	4047.61	-121.16	3179860.07	1444245.18	40°33'03.784"N	104°51'09.932"W
LAUNER 8 BHL ON PLAT REV-1(1234'FSL & 2561'FEL,SEC.27)	14644.19	7035.00	479.85	-7466.55	3172541.17	1440623.98	40°32'28.518"N	104°52'45.073"W
LAUNER 8 DRILLING CORRIDOR(60')		7035.00	0.00	0.00	3180010.79	1440198.69	40°32'23.788"N	104°51'08.363"W
LAUNER 8 LANDING		7035.00	425.89	-79.49	3179928.19	1440623.98	40°32'27.996"N	104°51'09.392"W
LAUNER 8 LANDING REV-1	7388.44	7035.00	425.89	-211.00	3179796.69	1440623.02	40°32'27.996"N	104°51'11.096"W

Survey Program

Start MD (ft)	End MD (ft)	Tool	Model	Log Name/Comment	Wellbore
24.00	15000.00	NaviTrak	NaviTrak (Standard)		LAUNER 8 PWB

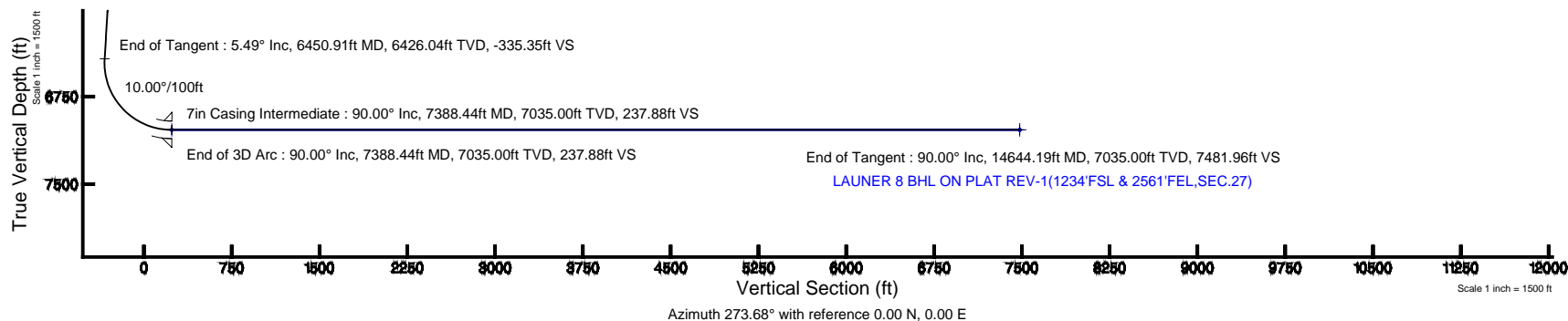
Well Profile Data

Design Comment	MD (ft)	Inc (°)	Az (°)	TVD (ft)	Local N (ft)	Local E (ft)	DLS (°/100ft)	VS (ft)
Tie On	24.00	0.000	43.565	24.00	0.00	0.00	0.00	0.00
End of Tangent	850.00	0.000	43.565	850.00	0.00	0.00	0.00	0.00
End of Build	1124.61	5.492	43.565	1124.19	9.53	9.06	2.00	-8.43
End of Tangent	6450.91	5.492	43.565	6426.04	378.92	360.40	0.00	-335.35
End of 3D Arc	7388.44	90.000	270.426	7035.00	425.89	-211.00	10.00	237.88
End of Tangent	14644.19	90.000	270.426	7035.00	479.85	-7466.55	0.00	7481.96



BGGM (1945.0 to 2016.0) Dip: 67.04° Field: 52816.5 nT
Magnetic North is 8.59 degrees East of True North (at 7/24/2014)

To correct azimuth from Magnetic to True add 8.59 degrees





Planned Wellpath Report

LAUNER 8 (REV-B.0) PWP

Page 1 of 8



REFERENCE WELLPATH IDENTIFICATION

Operator	EXTRACTION OIL & GAS	Slot	SLOT#20 LAUNER 8(745'FSL & 380'FEL,SEC.26)
Area	COLORADO	Well	LAUNER 8
Field	WELD COUNTY (NAD83/TRUE NORTH)	Wellbore	LAUNER 8 PWB
Facility	SEC.26-T07N-R67W		

REPORT SETUP INFORMATION

Projection System	NAD83 / Lambert Colorado SP, Northern Zone (501), US feet	Software System	WellArchitect® 4.0.0
North Reference	True	User	Painsetr
Scale	0.99997	Report Generated	10/7/2014 at 1:55:25 PM
Convergence at slot	n/a	Database/Source file	WA_Denver/_LAUNER_8_PWB.xml

WELLPATH LOCATION

	Local coordinates		Grid coordinates		Geographic coordinates	
	North[ft]	East[ft]	Easting[US ft]	Northing[US ft]	Latitude	Longitude
Slot Location	-4047.65	121.15	3180010.79	1440198.69	40°32'23.788"N	104°51'08.363"W
Facility Reference Pt			3179860.10	1444245.22	40°33'03.784"N	104°51'09.932"W
Field Reference Pt			3185481.27	1419166.81	40°28'55.560"N	104°49'59.556"W

WELLPATH DATUM

Calculation method	Minimum curvature	RIG (RKB) to Facility Vertical Datum	4955.00ft
Horizontal Reference Pt	Slot	RIG (RKB) to Mean Sea Level	4955.00ft
Vertical Reference Pt	RIG (RKB)	RIG (RKB) to Mud Line at Slot (SLOT#20 LAUNER 8(745'FSL & 380'FEL,SEC.26))	4955.00ft
MD Reference Pt	RIG (RKB)	Section Origin	N 0.00, E 0.00 ft
Field Vertical Reference	Mean Sea Level	Section Azimuth	273.68°



Planned Wellpath Report

LAUNER 8 (REV-B.0) PWP

Page 2 of 8



REFERENCE WELLPATH IDENTIFICATION

Operator	EXTRACTION OIL & GAS	Slot	SLOT#20 LAUNER 8(745'FSL & 380'FEL,SEC.26)
Area	COLORADO	Well	LAUNER 8
Field	WELD COUNTY (NAD83/TRUE NORTH)	Wellbore	LAUNER 8 PWB
Facility	SEC.26-T07N-R67W		

WELLPATH DATA (153 stations) † = interpolated/extrapolated station

MD [ft]	Inclination [°]	Azimuth [°]	TVD [ft]	Vert Sect [ft]	North [ft]	East [ft]	DLS [°/100ft]	Comments
0.00†	0.000	43.565	0.00	0.00	0.00	0.00	0.00	
24.00	0.000	43.565	24.00	0.00	0.00	0.00	0.00	Tie On
124.00†	0.000	43.565	124.00	0.00	0.00	0.00	0.00	
224.00†	0.000	43.565	224.00	0.00	0.00	0.00	0.00	
324.00†	0.000	43.565	324.00	0.00	0.00	0.00	0.00	
424.00†	0.000	43.565	424.00	0.00	0.00	0.00	0.00	
524.00†	0.000	43.565	524.00	0.00	0.00	0.00	0.00	
624.00†	0.000	43.565	624.00	0.00	0.00	0.00	0.00	
724.00†	0.000	43.565	724.00	0.00	0.00	0.00	0.00	
824.00†	0.000	43.565	824.00	0.00	0.00	0.00	0.00	
850.00	0.000	43.565	850.00	0.00	0.00	0.00	0.00	End of Tangent
924.00†	1.480	43.565	923.99	-0.61	0.69	0.66	2.00	
1024.00†	3.480	43.565	1023.89	-3.39	3.83	3.64	2.00	
1124.00†	5.480	43.565	1123.58	-8.40	9.49	9.02	2.00	
1124.61	5.492	43.565	1124.19	-8.43	9.53	9.06	2.00	End of Build
1224.00†	5.492	43.565	1223.12	-14.53	16.42	15.62	0.00	
1324.00†	5.492	43.565	1322.66	-20.67	23.36	22.22	0.00	
1424.00†	5.492	43.565	1422.21	-26.81	30.29	28.81	0.00	
1524.00†	5.492	43.565	1521.75	-32.95	37.23	35.41	0.00	
1624.00†	5.492	43.565	1621.29	-39.09	44.16	42.00	0.00	
1724.00†	5.492	43.565	1720.83	-45.22	51.10	48.60	0.00	
1824.00†	5.492	43.565	1820.37	-51.36	58.03	55.20	0.00	
1924.00†	5.492	43.565	1919.91	-57.50	64.97	61.79	0.00	
2024.00†	5.492	43.565	2019.45	-63.64	71.90	68.39	0.00	
2124.00†	5.492	43.565	2118.99	-69.77	78.84	74.99	0.00	
2224.00†	5.492	43.565	2218.53	-75.91	85.77	81.58	0.00	
2324.00†	5.492	43.565	2318.07	-82.05	92.71	88.18	0.00	
2424.00†	5.492	43.565	2417.61	-88.19	99.64	94.77	0.00	
2524.00†	5.492	43.565	2517.16	-94.33	106.58	101.37	0.00	
2624.00†	5.492	43.565	2616.70	-100.46	113.51	107.97	0.00	



Planned Wellpath Report

LAUNER 8 (REV-B.0) PWP

Page 3 of 8



REFERENCE WELLPATH IDENTIFICATION

Operator	EXTRACTION OIL & GAS	Slot	SLOT#20 LAUNER 8(745'FSL & 380'FEL,SEC.26)
Area	COLORADO	Well	LAUNER 8
Field	WELD COUNTY (NAD83/TRUE NORTH)	Wellbore	LAUNER 8 PWB
Facility	SEC.26-T07N-R67W		

WELLPATH DATA (153 stations) † = interpolated/extrapolated station

MD [ft]	Inclination [°]	Azimuth [°]	TVD [ft]	Vert Sect [ft]	North [ft]	East [ft]	DLS [°/100ft]	Comments
2724.00†	5.492	43.565	2716.24	-106.60	120.45	114.56	0.00	
2824.00†	5.492	43.565	2815.78	-112.74	127.38	121.16	0.00	
2924.00†	5.492	43.565	2915.32	-118.88	134.32	127.75	0.00	
3024.00†	5.492	43.565	3014.86	-125.01	141.25	134.35	0.00	
3124.00†	5.492	43.565	3114.40	-131.15	148.19	140.95	0.00	
3224.00†	5.492	43.565	3213.94	-137.29	155.12	147.54	0.00	
3324.00†	5.492	43.565	3313.48	-143.43	162.06	154.14	0.00	
3424.00†	5.492	43.565	3413.02	-149.57	169.00	160.74	0.00	
3524.00†	5.492	43.565	3512.56	-155.70	175.93	167.33	0.00	
3624.00†	5.492	43.565	3612.11	-161.84	182.87	173.93	0.00	
3724.00†	5.492	43.565	3711.65	-167.98	189.80	180.52	0.00	
3824.00†	5.492	43.565	3811.19	-174.12	196.74	187.12	0.00	
3924.00†	5.492	43.565	3910.73	-180.26	203.67	193.72	0.00	
4024.00†	5.492	43.565	4010.27	-186.39	210.61	200.31	0.00	
4124.00†	5.492	43.565	4109.81	-192.53	217.54	206.91	0.00	
4224.00†	5.492	43.565	4209.35	-198.67	224.48	213.50	0.00	
4324.00†	5.492	43.565	4308.89	-204.81	231.41	220.10	0.00	
4424.00†	5.492	43.565	4408.43	-210.94	238.35	226.70	0.00	
4524.00†	5.492	43.565	4507.97	-217.08	245.28	233.29	0.00	
4624.00†	5.492	43.565	4607.51	-223.22	252.22	239.89	0.00	
4724.00†	5.492	43.565	4707.06	-229.36	259.15	246.49	0.00	
4824.00†	5.492	43.565	4806.60	-235.50	266.09	253.08	0.00	
4924.00†	5.492	43.565	4906.14	-241.63	273.02	259.68	0.00	
5024.00†	5.492	43.565	5005.68	-247.77	279.96	266.27	0.00	
5124.00†	5.492	43.565	5105.22	-253.91	286.89	272.87	0.00	
5224.00†	5.492	43.565	5204.76	-260.05	293.83	279.47	0.00	
5324.00†	5.492	43.565	5304.30	-266.18	300.76	286.06	0.00	
5424.00†	5.492	43.565	5403.84	-272.32	307.70	292.66	0.00	
5524.00†	5.492	43.565	5503.38	-278.46	314.63	299.26	0.00	
5624.00†	5.492	43.565	5602.92	-284.60	321.57	305.85	0.00	



Planned Wellpath Report

LAUNER 8 (REV-B.0) PWP

Page 4 of 8



REFERENCE WELLPATH IDENTIFICATION			
Operator	EXTRACTION OIL & GAS	Slot	SLOT#20 LAUNER 8(745'FSL & 380'FEL,SEC.26)
Area	COLORADO	Well	LAUNER 8
Field	WELD COUNTY (NAD83/TRUE NORTH)	Wellbore	LAUNER 8 PWB
Facility	SEC.26-T07N-R67W		

WELLPATH DATA (153 stations) † = interpolated/extrapolated station								
MD [ft]	Inclination [°]	Azimuth [°]	TVD [ft]	Vert Sect [ft]	North [ft]	East [ft]	DLS [°/100ft]	Comments
5724.00†	5.492	43.565	5702.46	-290.74	328.50	312.45	0.00	
5824.00†	5.492	43.565	5802.01	-296.87	335.44	319.04	0.00	
5924.00†	5.492	43.565	5901.55	-303.01	342.37	325.64	0.00	
6024.00†	5.492	43.565	6001.09	-309.15	349.31	332.24	0.00	
6124.00†	5.492	43.565	6100.63	-315.29	356.24	338.83	0.00	
6224.00†	5.492	43.565	6200.17	-321.43	363.18	345.43	0.00	
6324.00†	5.492	43.565	6299.71	-327.56	370.11	352.02	0.00	
6424.00†	5.492	43.565	6399.25	-333.70	377.05	358.62	0.00	
6450.91	5.492	43.565	6426.04	-335.35	378.92	360.40	0.00	End of Tangent
6524.00†	5.360	318.823	6498.90	-335.19	384.03	360.56	10.00	
6624.00†	14.127	286.613	6597.42	-319.96	391.05	345.75	10.00	
6724.00†	23.876	279.546	6691.87	-287.85	397.91	314.02	10.00	
6824.00†	33.767	276.450	6779.38	-239.84	404.41	266.32	10.00	
6924.00†	43.704	274.636	6857.28	-177.38	410.34	204.12	10.00	
7024.00†	53.660	273.385	6923.23	-102.37	415.52	129.29	10.00	
7124.00†	63.626	272.420	6975.20	-17.10	419.80	44.11	10.00	
7224.00†	73.598	271.609	7011.62	75.86	423.05	-48.83	10.00	
7324.00†	83.572	270.879	7031.39	173.67	425.16	-146.70	10.00	
7388.44	90.000	270.426	7035.00 ¹	237.88	425.89	-211.00	10.00	End of 3D Arc
7424.00†	90.000	270.426	7035.00	273.38	426.16	-246.56	0.00	
7524.00†	90.000	270.426	7035.00	373.22	426.90	-346.56	0.00	
7624.00†	90.000	270.426	7035.00	473.06	427.64	-446.56	0.00	
7724.00†	90.000	270.426	7035.00	572.90	428.39	-546.55	0.00	
7824.00†	90.000	270.426	7035.00	672.74	429.13	-646.55	0.00	
7924.00†	90.000	270.426	7035.00	772.58	429.87	-746.55	0.00	
8024.00†	90.000	270.426	7035.00	872.42	430.62	-846.54	0.00	
8124.00†	90.000	270.426	7035.00	972.26	431.36	-946.54	0.00	
8224.00†	90.000	270.426	7035.00	1072.10	432.11	-1046.54	0.00	
8324.00†	90.000	270.426	7035.00	1171.94	432.85	-1146.54	0.00	
8424.00†	90.000	270.426	7035.00	1271.77	433.59	-1246.53	0.00	



Planned Wellpath Report

LAUNER 8 (REV-B.0) PWP

Page 5 of 8



REFERENCE WELLPATH IDENTIFICATION

Operator	EXTRACTION OIL & GAS	Slot	SLOT#20 LAUNER 8(745'FSL & 380'FEL,SEC.26)
Area	COLORADO	Well	LAUNER 8
Field	WELD COUNTY (NAD83/TRUE NORTH)	Wellbore	LAUNER 8 PWB
Facility	SEC.26-T07N-R67W		

WELLPATH DATA (153 stations) † = interpolated/extrapolated station

MD [ft]	Inclination [°]	Azimuth [°]	TVD [ft]	Vert Sect [ft]	North [ft]	East [ft]	DLS [°/100ft]	Comments
8524.00†	90.000	270.426	7035.00	1371.61	434.34	-1346.53	0.00	
8624.00†	90.000	270.426	7035.00	1471.45	435.08	-1446.53	0.00	
8724.00†	90.000	270.426	7035.00	1571.29	435.82	-1546.52	0.00	
8824.00†	90.000	270.426	7035.00	1671.13	436.57	-1646.52	0.00	
8924.00†	90.000	270.426	7035.00	1770.97	437.31	-1746.52	0.00	
9024.00†	90.000	270.426	7035.00	1870.81	438.05	-1846.52	0.00	
9124.00†	90.000	270.426	7035.00	1970.65	438.80	-1946.51	0.00	
9224.00†	90.000	270.426	7035.00	2070.49	439.54	-2046.51	0.00	
9324.00†	90.000	270.426	7035.00	2170.33	440.29	-2146.51	0.00	
9424.00†	90.000	270.426	7035.00	2270.17	441.03	-2246.51	0.00	
9524.00†	90.000	270.426	7035.00	2370.00	441.77	-2346.50	0.00	
9624.00†	90.000	270.426	7035.00	2469.84	442.52	-2446.50	0.00	
9724.00†	90.000	270.426	7035.00	2569.68	443.26	-2546.50	0.00	
9824.00†	90.000	270.426	7035.00	2669.52	444.00	-2646.49	0.00	
9924.00†	90.000	270.426	7035.00	2769.36	444.75	-2746.49	0.00	
10024.00†	90.000	270.426	7035.00	2869.20	445.49	-2846.49	0.00	
10124.00†	90.000	270.426	7035.00	2969.04	446.23	-2946.49	0.00	
10224.00†	90.000	270.426	7035.00	3068.88	446.98	-3046.48	0.00	
10324.00†	90.000	270.426	7035.00	3168.72	447.72	-3146.48	0.00	
10424.00†	90.000	270.426	7035.00	3268.56	448.47	-3246.48	0.00	
10524.00†	90.000	270.426	7035.00	3368.40	449.21	-3346.47	0.00	
10624.00†	90.000	270.426	7035.00	3468.23	449.95	-3446.47	0.00	
10724.00†	90.000	270.426	7035.00	3568.07	450.70	-3546.47	0.00	
10824.00†	90.000	270.426	7035.00	3667.91	451.44	-3646.47	0.00	
10924.00†	90.000	270.426	7035.00	3767.75	452.18	-3746.46	0.00	
11024.00†	90.000	270.426	7035.00	3867.59	452.93	-3846.46	0.00	
11124.00†	90.000	270.426	7035.00	3967.43	453.67	-3946.46	0.00	
11224.00†	90.000	270.426	7035.00	4067.27	454.41	-4046.46	0.00	
11324.00†	90.000	270.426	7035.00	4167.11	455.16	-4146.45	0.00	
11424.00†	90.000	270.426	7035.00	4266.95	455.90	-4246.45	0.00	



Planned Wellpath Report

LAUNER 8 (REV-B.0) PWP

Page 6 of 8



REFERENCE WELLPATH IDENTIFICATION

Operator	EXTRACTION OIL & GAS	Slot	SLOT#20 LAUNER 8(745'FSL & 380'FEL,SEC.26)
Area	COLORADO	Well	LAUNER 8
Field	WELD COUNTY (NAD83/TRUE NORTH)	Wellbore	LAUNER 8 PWB
Facility	SEC.26-T07N-R67W		

WELLPATH DATA (153 stations) † = interpolated/extrapolated station

MD [ft]	Inclination [°]	Azimuth [°]	TVD [ft]	Vert Sect [ft]	North [ft]	East [ft]	DLS [°/100ft]	Comments
11524.00†	90.000	270.426	7035.00	4366.79	456.65	-4346.45	0.00	
11624.00†	90.000	270.426	7035.00	4466.62	457.39	-4446.44	0.00	
11724.00†	90.000	270.426	7035.00	4566.46	458.13	-4546.44	0.00	
11824.00†	90.000	270.426	7035.00	4666.30	458.88	-4646.44	0.00	
11924.00†	90.000	270.426	7035.00	4766.14	459.62	-4746.44	0.00	
12024.00†	90.000	270.426	7035.00	4865.98	460.36	-4846.43	0.00	
12124.00†	90.000	270.426	7035.00	4965.82	461.11	-4946.43	0.00	
12224.00†	90.000	270.426	7035.00	5065.66	461.85	-5046.43	0.00	
12324.00†	90.000	270.426	7035.00	5165.50	462.59	-5146.43	0.00	
12424.00†	90.000	270.426	7035.00	5265.34	463.34	-5246.42	0.00	
12524.00†	90.000	270.426	7035.00	5365.18	464.08	-5346.42	0.00	
12624.00†	90.000	270.426	7035.00	5465.02	464.83	-5446.42	0.00	
12724.00†	90.000	270.426	7035.00	5564.85	465.57	-5546.41	0.00	
12824.00†	90.000	270.426	7035.00	5664.69	466.31	-5646.41	0.00	
12924.00†	90.000	270.426	7035.00	5764.53	467.06	-5746.41	0.00	
13024.00†	90.000	270.426	7035.00	5864.37	467.80	-5846.41	0.00	
13124.00†	90.000	270.426	7035.00	5964.21	468.54	-5946.40	0.00	
13224.00†	90.000	270.426	7035.00	6064.05	469.29	-6046.40	0.00	
13324.00†	90.000	270.426	7035.00	6163.89	470.03	-6146.40	0.00	
13424.00†	90.000	270.426	7035.00	6263.73	470.77	-6246.39	0.00	
13524.00†	90.000	270.426	7035.00	6363.57	471.52	-6346.39	0.00	
13624.00†	90.000	270.426	7035.00	6463.41	472.26	-6446.39	0.00	
13724.00†	90.000	270.426	7035.00	6563.25	473.01	-6546.39	0.00	
13824.00†	90.000	270.426	7035.00	6663.08	473.75	-6646.38	0.00	
13924.00†	90.000	270.426	7035.00	6762.92	474.49	-6746.38	0.00	
14024.00†	90.000	270.426	7035.00	6862.76	475.24	-6846.38	0.00	
14124.00†	90.000	270.426	7035.00	6962.60	475.98	-6946.38	0.00	
14224.00†	90.000	270.426	7035.00	7062.44	476.72	-7046.37	0.00	
14324.00†	90.000	270.426	7035.00	7162.28	477.47	-7146.37	0.00	
14424.00†	90.000	270.426	7035.00	7262.12	478.21	-7246.37	0.00	



Planned Wellpath Report

LAUNER 8 (REV-B.0) PWP

Page 7 of 8



REFERENCE WELLPATH IDENTIFICATION

Operator	EXTRACTION OIL & GAS	Slot	SLOT#20 LAUNER 8(745'FSL & 380'FEL,SEC.26)
Area	COLORADO	Well	LAUNER 8
Field	WELD COUNTY (NAD83/TRUE NORTH)	Wellbore	LAUNER 8 PWB
Facility	SEC.26-T07N-R67W		

WELLPATH DATA (153 stations) † = interpolated/extrapolated station

MD [ft]	Inclination [°]	Azimuth [°]	TVD [ft]	Vert Sect [ft]	North [ft]	East [ft]	DLS [°/100ft]	Comments
14524.00†	90.000	270.426	7035.00	7361.96	478.95	-7346.36	0.00	
14624.00†	90.000	270.426	7035.00	7461.80	479.70	-7446.36	0.00	
14644.19	90.000	270.426	7035.00 ²	7481.96	479.85	-7466.55	0.00	End of Tangent

HOLE & CASING SECTIONS - Ref Wellbore: LAUNER 8 PWB Ref Wellpath: LAUNER 8 (REV-B.0) PWP

String/Diameter	Start MD [ft]	End MD [ft]	Interval [ft]	Start TVD [ft]	End TVD [ft]	Start N/S [ft]	Start E/W [ft]	End N/S [ft]	End E/W [ft]
7in Casing Intermediate	24.00	7388.44	7364.44	24.00	7035.00	0.00	0.00	425.89	-211.00



Planned Wellpath Report

LAUNER 8 (REV-B.0) PWP

Page 8 of 8



REFERENCE WELLPATH IDENTIFICATION			
Operator	EXTRACTION OIL & GAS	Slot	SLOT#20 LAUNER 8(745'FSL & 380'FEL,SEC.26)
Area	COLORADO	Well	LAUNER 8
Field	WELD COUNTY (NAD83/TRUE NORTH)	Wellbore	LAUNER 8 PWB
Facility	SEC.26-T07N-R67W		

TARGETS									
Name	MD [ft]	TVD [ft]	North [ft]	East [ft]	Grid East [US ft]	Grid North [US ft]	Latitude	Longitude	Shape
SEC.26-T07N-R67W		-17.00	4047.61	-121.16	3179860.07	1444245.18	40°33'03.784"N	104°51'09.932"W	polygon
SEC.27-T07N-R67W		-17.00	4047.61	-121.16	3179860.07	1444245.18	40°33'03.784"N	104°51'09.932"W	polygon
2) LAUNER 8 BHL ON PLAT REV-1(1234'FSL & 2561'FEL,SEC.27)	14644.19	7035.00	479.85	-7466.55	3172541.17	1440623.98	40°32'28.518"N	104°52'45.073"W	point
LAUNER 8 DRILLING CORRIDOR(60')		7035.00	0.00	0.00	3180010.79	1440198.69	40°32'23.788"N	104°51'08.363"W	polygon
LAUNER 8 LANDING		7035.00	425.89	-79.49	3179928.19	1440623.98	40°32'27.996"N	104°51'09.392"W	point
1) LAUNER 8 LANDING REV-1	7388.44	7035.00	425.89	-211.00	3179796.69	1440623.02	40°32'27.996"N	104°51'11.096"W	point

SURVEY PROGRAM - Ref Wellbore: LAUNER 8 PWB Ref Wellpath: LAUNER 8 (REV-B.0) PWP				
Start MD [ft]	End MD [ft]	Positional Uncertainty Model	Log Name/Comment	Wellbore
24.00	15000.00	NaviTrak (Standard)		LAUNER 8 PWB