

EXTRACTION OIL & GAS

Location: COLORADO Slot: SLOT#19 LAUNER 7(769'FSL & 364'FEL,SEC.26)
Field: WELD COUNTY (NAD83/TRUE NORTH) Well: LAUNER 7
Facility: SEC.26-T07N-R67W Wellbore: LAUNER 7 PWB

Plot reference wellpath is LAUNER 7 (REV-B.0) PWP

True vertical depths are referenced to RIG (RKB)	Grid System: NAD83 / Lambert Colorado SP, Northern Zone (501), US feet
Measured depths are referenced to RIG (RKB)	North Reference: True north
RIG (RKB) to Mean Sea Level: 4955 feet	Scale: True distance
Mean Sea Level to Mud line (At Slot: SLOT#19 LAUNER 7(769'FSL & 364'FEL,SEC.26)): 0 feet	Depths are in feet
Coordinates are in feet referenced to Slot	Created by: painsett on 10/7/2014

Location Information

Facility Name			Grid East (US ft)	Grid North (US ft)	Latitude	Longitude
SEC.26-T07N-R67W			3179860.101	1444245.219	40°33'03.784"N	104°51'09.932"W
Slot	Local N (ft)	Local E (ft)	Grid East (US ft)	Grid North (US ft)	Latitude	Longitude
SLOT#19 LAUNER 7(769'FSL & 364'FEL,SEC.26)	-4024.33	137.00	3180026.461	1440222.121	40°32'24.018"N	104°51'08.158"W
RIG (RKB) to Mud line (At Slot: SLOT#19 LAUNER 7(769'FSL & 364'FEL,SEC.26))					4955ft	
Mean Sea Level to Mud line (At Slot: SLOT#19 LAUNER 7(769'FSL & 364'FEL,SEC.26))					0ft	
RIG (RKB) to Mean Sea Level					4955ft	

Targets

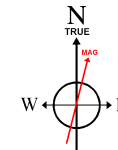
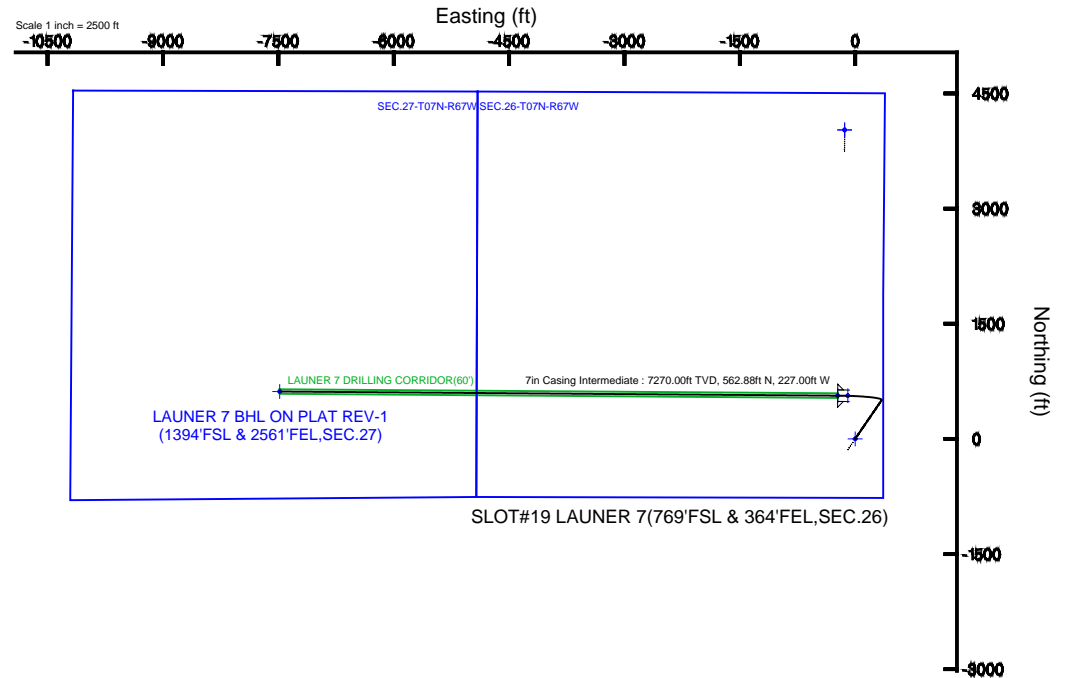
Name	MD (ft)	TVD (ft)	Local N (ft)	Local E (ft)	Grid East (US ft)	Grid North (US ft)	Latitude	Longitude
SEC.26-T07N-R67W		-17.00	4024.30	-137.00	3179860.07	1444245.18	40°33'03.784"N	104°51'09.932"W
SEC.27-T07N-R67W		-17.00	4024.30	-137.00	3179860.07	1444245.18	40°33'03.784"N	104°51'09.932"W
LAUNER 7 BHL ON PLAT REV-1(1394'FSL & 2561'FEL,SEC.27)	14887.32	7270.00	616.84	-7482.07	3172540.33	1440784.27	40°32'30.102"N	104°52'45.070"W
LAUNER 7 DRILLING CORRIDOR(60')		7270.00	0.00	0.00	3180026.46	1440222.12	40°32'24.018"N	104°51'08.158"W
LAUNER 7 LANDING		7270.00	562.88	-95.33	3179927.02	1440784.27	40°32'29.580"N	104°51'09.392"W
LAUNER 7 LANDING REV-1	7632.05	7270.00	562.88	-227.00	3179795.36	1440783.31	40°32'29.580"N	104°51'11.098"W

Survey Program

Start MD (ft)	End MD (ft)	Tool	Model	Log Name/Comment	Wellbore
24.00	16000.00	NaviTrak	NaviTrak (Standard)		LAUNER 7 PWB

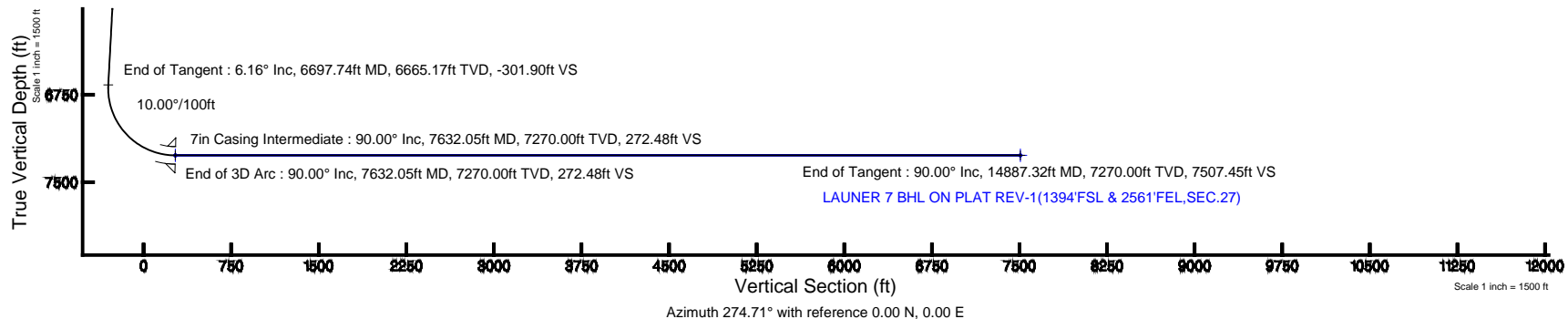
Well Profile Data

Design Comment	MD (ft)	Inc (°)	Az (°)	TVD (ft)	Local N (ft)	Local E (ft)	DLS (°/100ft)	VS (ft)
Tie On	24.00	0.000	34.331	24.00	0.00	0.00	0.00	0.00
End of Tangent	850.00	0.000	34.331	850.00	0.00	0.00	0.00	0.00
End of Build	1157.94	6.159	34.331	1157.35	13.65	9.33	2.00	-8.17
End of Tangent	6697.74	6.159	34.331	6665.17	504.46	344.51	0.00	-301.90
End of 3D Arc	7632.05	90.000	270.426	7270.00	562.88	-227.00	10.00	272.48
End of Tangent	14887.32	90.000	270.426	7270.00	616.84	-7482.07	0.00	7507.45



BGGM (1945.0 to 2016.0) Dip: 67.04° Field: 52816.5 nT
Magnetic North is 8.59 degrees East of True North (at 7/24/2014)

To correct azimuth from Magnetic to True add 8.59 degrees





Planned Wellpath Report

LAUNER 7 (REV-B.0) PWP

Page 1 of 8



REFERENCE WELLPATH IDENTIFICATION

Operator	EXTRACTION OIL & GAS	Slot	SLOT#19 LAUNER 7(769'FSL & 364'FEL,SEC.26)
Area	COLORADO	Well	LAUNER 7
Field	WELD COUNTY (NAD83/TRUE NORTH)	Wellbore	LAUNER 7 PWB
Facility	SEC.26-T07N-R67W		

REPORT SETUP INFORMATION

Projection System	NAD83 / Lambert Colorado SP, Northern Zone (501), US feet	Software System	WellArchitect® 4.0.0
North Reference	True	User	Painsetr
Scale	0.99997	Report Generated	10/7/2014 at 1:45:43 PM
Convergence at slot	n/a	Database/Source file	WA_Denver/LAUNER_7_PWB.xml

WELLPATH LOCATION

	Local coordinates		Grid coordinates		Geographic coordinates	
	North[ft]	East[ft]	Easting[US ft]	Northing[US ft]	Latitude	Longitude
Slot Location	-4024.33	137.00	3180026.46	1440222.12	40°32'24.018"N	104°51'08.158"W
Facility Reference Pt			3179860.10	1444245.22	40°33'03.784"N	104°51'09.932"W
Field Reference Pt			3185481.27	1419166.81	40°28'55.560"N	104°49'59.556"W

WELLPATH DATUM

Calculation method	Minimum curvature	RIG (RKB) to Facility Vertical Datum	4955.00ft
Horizontal Reference Pt	Slot	RIG (RKB) to Mean Sea Level	4955.00ft
Vertical Reference Pt	RIG (RKB)	RIG (RKB) to Mud Line at Slot (SLOT#19 LAUNER 7(769'FSL & 364'FEL,SEC.26))	4955.00ft
MD Reference Pt	RIG (RKB)	Section Origin	N 0.00, E 0.00 ft
Field Vertical Reference	Mean Sea Level	Section Azimuth	274.71°



Planned Wellpath Report

LAUNER 7 (REV-B.0) PWP

Page 2 of 8



REFERENCE WELLPATH IDENTIFICATION

Operator	EXTRACTION OIL & GAS	Slot	SLOT#19 LAUNER 7(769'FSL & 364'FEL,SEC.26)
Area	COLORADO	Well	LAUNER 7
Field	WELD COUNTY (NAD83/TRUE NORTH)	Wellbore	LAUNER 7 PWB
Facility	SEC.26-T07N-R67W		

WELLPATH DATA (155 stations) † = interpolated/extrapolated station

MD [ft]	Inclination [°]	Azimuth [°]	TVD [ft]	Vert Sect [ft]	North [ft]	East [ft]	DLS [°/100ft]	Comments
0.00†	0.000	34.331	0.00	0.00	0.00	0.00	0.00	
24.00	0.000	34.331	24.00	0.00	0.00	0.00	0.00	Tie On
124.00†	0.000	34.331	124.00	0.00	0.00	0.00	0.00	
224.00†	0.000	34.331	224.00	0.00	0.00	0.00	0.00	
324.00†	0.000	34.331	324.00	0.00	0.00	0.00	0.00	
424.00†	0.000	34.331	424.00	0.00	0.00	0.00	0.00	
524.00†	0.000	34.331	524.00	0.00	0.00	0.00	0.00	
624.00†	0.000	34.331	624.00	0.00	0.00	0.00	0.00	
724.00†	0.000	34.331	724.00	0.00	0.00	0.00	0.00	
824.00†	0.000	34.331	824.00	0.00	0.00	0.00	0.00	
850.00	0.000	34.331	850.00	0.00	0.00	0.00	0.00	End of Tangent
924.00†	1.480	34.331	923.99	-0.47	0.79	0.54	2.00	
1024.00†	3.480	34.331	1023.89	-2.61	4.36	2.98	2.00	
1124.00†	5.480	34.331	1123.58	-6.47	10.81	7.38	2.00	
1157.94	6.159	34.331	1157.35	-8.17	13.65	9.33	2.00	End of Build
1224.00†	6.159	34.331	1223.03	-11.67	19.51	13.32	0.00	
1324.00†	6.159	34.331	1322.45	-16.98	28.37	19.37	0.00	
1424.00†	6.159	34.331	1421.87	-22.28	37.23	25.42	0.00	
1524.00†	6.159	34.331	1521.29	-27.58	46.09	31.47	0.00	
1624.00†	6.159	34.331	1620.72	-32.88	54.94	37.52	0.00	
1724.00†	6.159	34.331	1720.14	-38.18	63.80	43.57	0.00	
1824.00†	6.159	34.331	1819.56	-43.49	72.66	49.63	0.00	
1924.00†	6.159	34.331	1918.99	-48.79	81.52	55.68	0.00	
2024.00†	6.159	34.331	2018.41	-54.09	90.38	61.73	0.00	
2124.00†	6.159	34.331	2117.83	-59.39	99.24	67.78	0.00	
2224.00†	6.159	34.331	2217.25	-64.70	108.10	73.83	0.00	
2324.00†	6.159	34.331	2316.68	-70.00	116.96	79.88	0.00	
2424.00†	6.159	34.331	2416.10	-75.30	125.82	85.93	0.00	
2524.00†	6.159	34.331	2515.52	-80.60	134.68	91.98	0.00	
2624.00†	6.159	34.331	2614.95	-85.90	143.54	98.03	0.00	



Planned Wellpath Report

LAUNER 7 (REV-B.0) PWP

Page 3 of 8



REFERENCE WELLPATH IDENTIFICATION

Operator	EXTRACTION OIL & GAS	Slot	SLOT#19 LAUNER 7(769'FSL & 364'FEL,SEC.26)
Area	COLORADO	Well	LAUNER 7
Field	WELD COUNTY (NAD83/TRUE NORTH)	Wellbore	LAUNER 7 PWB
Facility	SEC.26-T07N-R67W		

WELLPATH DATA (155 stations) † = interpolated/extrapolated station

MD [ft]	Inclination [°]	Azimuth [°]	TVD [ft]	Vert Sect [ft]	North [ft]	East [ft]	DLS [°/100ft]	Comments
2724.00†	6.159	34.331	2714.37	-91.21	152.40	104.08	0.00	
2824.00†	6.159	34.331	2813.79	-96.51	161.26	110.13	0.00	
2924.00†	6.159	34.331	2913.21	-101.81	170.12	116.18	0.00	
3024.00†	6.159	34.331	3012.64	-107.11	178.98	122.23	0.00	
3124.00†	6.159	34.331	3112.06	-112.41	187.84	128.28	0.00	
3224.00†	6.159	34.331	3211.48	-117.72	196.70	134.33	0.00	
3324.00†	6.159	34.331	3310.91	-123.02	205.56	140.38	0.00	
3424.00†	6.159	34.331	3410.33	-128.32	214.42	146.43	0.00	
3524.00†	6.159	34.331	3509.75	-133.62	223.28	152.48	0.00	
3624.00†	6.159	34.331	3609.17	-138.93	232.14	158.53	0.00	
3724.00†	6.159	34.331	3708.60	-144.23	241.00	164.59	0.00	
3824.00†	6.159	34.331	3808.02	-149.53	249.86	170.64	0.00	
3924.00†	6.159	34.331	3907.44	-154.83	258.71	176.69	0.00	
4024.00†	6.159	34.331	4006.87	-160.13	267.57	182.74	0.00	
4124.00†	6.159	34.331	4106.29	-165.44	276.43	188.79	0.00	
4224.00†	6.159	34.331	4205.71	-170.74	285.29	194.84	0.00	
4324.00†	6.159	34.331	4305.13	-176.04	294.15	200.89	0.00	
4424.00†	6.159	34.331	4404.56	-181.34	303.01	206.94	0.00	
4524.00†	6.159	34.331	4503.98	-186.64	311.87	212.99	0.00	
4624.00†	6.159	34.331	4603.40	-191.95	320.73	219.04	0.00	
4724.00†	6.159	34.331	4702.83	-197.25	329.59	225.09	0.00	
4824.00†	6.159	34.331	4802.25	-202.55	338.45	231.14	0.00	
4924.00†	6.159	34.331	4901.67	-207.85	347.31	237.19	0.00	
5024.00†	6.159	34.331	5001.09	-213.16	356.17	243.24	0.00	
5124.00†	6.159	34.331	5100.52	-218.46	365.03	249.29	0.00	
5224.00†	6.159	34.331	5199.94	-223.76	373.89	255.34	0.00	
5324.00†	6.159	34.331	5299.36	-229.06	382.75	261.39	0.00	
5424.00†	6.159	34.331	5398.78	-234.36	391.61	267.44	0.00	
5524.00†	6.159	34.331	5498.21	-239.67	400.47	273.49	0.00	
5624.00†	6.159	34.331	5597.63	-244.97	409.33	279.55	0.00	



Planned Wellpath Report

LAUNER 7 (REV-B.0) PWP

Page 4 of 8



REFERENCE WELLPATH IDENTIFICATION

Operator	EXTRACTION OIL & GAS	Slot	SLOT#19 LAUNER 7(769'FSL & 364'FEL,SEC.26)
Area	COLORADO	Well	LAUNER 7
Field	WELD COUNTY (NAD83/TRUE NORTH)	Wellbore	LAUNER 7 PWB
Facility	SEC.26-T07N-R67W		

WELLPATH DATA (155 stations) † = interpolated/extrapolated station

MD [ft]	Inclination [°]	Azimuth [°]	TVD [ft]	Vert Sect [ft]	North [ft]	East [ft]	DLS [°/100ft]	Comments
5724.00†	6.159	34.331	5697.05	-250.27	418.19	285.60	0.00	
5824.00†	6.159	34.331	5796.48	-255.57	427.05	291.65	0.00	
5924.00†	6.159	34.331	5895.90	-260.87	435.91	297.70	0.00	
6024.00†	6.159	34.331	5995.32	-266.18	444.77	303.75	0.00	
6124.00†	6.159	34.331	6094.74	-271.48	453.62	309.80	0.00	
6224.00†	6.159	34.331	6194.17	-276.78	462.48	315.85	0.00	
6324.00†	6.159	34.331	6293.59	-282.08	471.34	321.90	0.00	
6424.00†	6.159	34.331	6393.01	-287.39	480.20	327.95	0.00	
6524.00†	6.159	34.331	6492.44	-292.69	489.06	334.00	0.00	
6624.00†	6.159	34.331	6591.86	-297.99	497.92	340.05	0.00	
6697.74	6.159	34.331	6665.17	-301.90	504.46	344.51	0.00	End of Tangent
6724.00†	5.181	9.378	6691.31	-302.69	506.79	345.50	10.00	
6824.00†	10.513	299.284	6790.52	-294.74	515.73	338.26	10.00	
6924.00†	19.841	284.798	6886.95	-269.67	524.55	313.83	10.00	
7024.00†	29.601	279.496	6977.69	-228.25	532.98	272.96	10.00	
7124.00†	39.474	276.669	7059.97	-171.73	540.76	216.89	10.00	
7224.00†	49.392	274.830	7131.29	-101.82	547.67	147.32	10.00	
7324.00†	59.331	273.471	7189.49	-20.66	553.48	66.36	10.00	
7424.00†	69.282	272.367	7232.79	69.29	558.03	-23.52	10.00	
7524.00†	79.239	271.401	7259.88	165.30	561.17	-119.60	10.00	
7624.00†	89.198	270.498	7269.94	264.45	562.81	-218.95	10.00	
7632.05	90.000	270.426	7270.00 ¹	272.48	562.88	-227.00	10.00	End of 3D Arc
7724.00†	90.000	270.426	7270.00	364.17	563.56	-318.95	0.00	
7824.00†	90.000	270.426	7270.00	463.89	564.30	-418.94	0.00	
7924.00†	90.000	270.426	7270.00	563.61	565.05	-518.94	0.00	
8024.00†	90.000	270.426	7270.00	663.33	565.79	-618.94	0.00	
8124.00†	90.000	270.426	7270.00	763.05	566.54	-718.94	0.00	
8224.00†	90.000	270.426	7270.00	862.77	567.28	-818.93	0.00	
8324.00†	90.000	270.426	7270.00	962.49	568.02	-918.93	0.00	
8424.00†	90.000	270.426	7270.00	1062.21	568.77	-1018.93	0.00	



Planned Wellpath Report

LAUNER 7 (REV-B.0) PWP

Page 5 of 8



REFERENCE WELLPATH IDENTIFICATION

Operator	EXTRACTION OIL & GAS	Slot	SLOT#19 LAUNER 7(769'FSL & 364'FEL,SEC.26)
Area	COLORADO	Well	LAUNER 7
Field	WELD COUNTY (NAD83/TRUE NORTH)	Wellbore	LAUNER 7 PWB
Facility	SEC.26-T07N-R67W		

WELLPATH DATA (155 stations) † = interpolated/extrapolated station

MD [ft]	Inclination [°]	Azimuth [°]	TVD [ft]	Vert Sect [ft]	North [ft]	East [ft]	DLS [°/100ft]	Comments
8524.00†	90.000	270.426	7270.00	1161.93	569.51	-1118.93	0.00	
8624.00†	90.000	270.426	7270.00	1261.66	570.25	-1218.92	0.00	
8724.00†	90.000	270.426	7270.00	1361.38	571.00	-1318.92	0.00	
8824.00†	90.000	270.426	7270.00	1461.10	571.74	-1418.92	0.00	
8924.00†	90.000	270.426	7270.00	1560.82	572.49	-1518.91	0.00	
9024.00†	90.000	270.426	7270.00	1660.54	573.23	-1618.91	0.00	
9124.00†	90.000	270.426	7270.00	1760.26	573.97	-1718.91	0.00	
9224.00†	90.000	270.426	7270.00	1859.98	574.72	-1818.91	0.00	
9324.00†	90.000	270.426	7270.00	1959.70	575.46	-1918.90	0.00	
9424.00†	90.000	270.426	7270.00	2059.42	576.20	-2018.90	0.00	
9524.00†	90.000	270.426	7270.00	2159.14	576.95	-2118.90	0.00	
9624.00†	90.000	270.426	7270.00	2258.86	577.69	-2218.89	0.00	
9724.00†	90.000	270.426	7270.00	2358.58	578.44	-2318.89	0.00	
9824.00†	90.000	270.426	7270.00	2458.30	579.18	-2418.89	0.00	
9924.00†	90.000	270.426	7270.00	2558.02	579.92	-2518.89	0.00	
10024.00†	90.000	270.426	7270.00	2657.74	580.67	-2618.88	0.00	
10124.00†	90.000	270.426	7270.00	2757.46	581.41	-2718.88	0.00	
10224.00†	90.000	270.426	7270.00	2857.18	582.15	-2818.88	0.00	
10324.00†	90.000	270.426	7270.00	2956.90	582.90	-2918.88	0.00	
10424.00†	90.000	270.426	7270.00	3056.62	583.64	-3018.87	0.00	
10524.00†	90.000	270.426	7270.00	3156.34	584.39	-3118.87	0.00	
10624.00†	90.000	270.426	7270.00	3256.06	585.13	-3218.87	0.00	
10724.00†	90.000	270.426	7270.00	3355.78	585.87	-3318.86	0.00	
10824.00†	90.000	270.426	7270.00	3455.50	586.62	-3418.86	0.00	
10924.00†	90.000	270.426	7270.00	3555.22	587.36	-3518.86	0.00	
11024.00†	90.000	270.426	7270.00	3654.94	588.10	-3618.86	0.00	
11124.00†	90.000	270.426	7270.00	3754.66	588.85	-3718.85	0.00	
11224.00†	90.000	270.426	7270.00	3854.38	589.59	-3818.85	0.00	
11324.00†	90.000	270.426	7270.00	3954.10	590.34	-3918.85	0.00	
11424.00†	90.000	270.426	7270.00	4053.82	591.08	-4018.84	0.00	



Planned Wellpath Report

LAUNER 7 (REV-B.0) PWP

Page 6 of 8



REFERENCE WELLPATH IDENTIFICATION

Operator	EXTRACTION OIL & GAS	Slot	SLOT#19 LAUNER 7(769'FSL & 364'FEL,SEC.26)
Area	COLORADO	Well	LAUNER 7
Field	WELD COUNTY (NAD83/TRUE NORTH)	Wellbore	LAUNER 7 PWB
Facility	SEC.26-T07N-R67W		

WELLPATH DATA (155 stations) † = interpolated/extrapolated station

MD [ft]	Inclination [°]	Azimuth [°]	TVD [ft]	Vert Sect [ft]	North [ft]	East [ft]	DLS [°/100ft]	Comments
11524.00†	90.000	270.426	7270.00	4153.54	591.82	-4118.84	0.00	
11624.00†	90.000	270.426	7270.00	4253.26	592.57	-4218.84	0.00	
11724.00†	90.000	270.426	7270.00	4352.98	593.31	-4318.84	0.00	
11824.00†	90.000	270.426	7270.00	4452.70	594.05	-4418.83	0.00	
11924.00†	90.000	270.426	7270.00	4552.42	594.80	-4518.83	0.00	
12024.00†	90.000	270.426	7270.00	4652.14	595.54	-4618.83	0.00	
12124.00†	90.000	270.426	7270.00	4751.86	596.29	-4718.83	0.00	
12224.00†	90.000	270.426	7270.00	4851.58	597.03	-4818.82	0.00	
12324.00†	90.000	270.426	7270.00	4951.30	597.77	-4918.82	0.00	
12424.00†	90.000	270.426	7270.00	5051.02	598.52	-5018.82	0.00	
12524.00†	90.000	270.426	7270.00	5150.74	599.26	-5118.81	0.00	
12624.00†	90.000	270.426	7270.00	5250.46	600.00	-5218.81	0.00	
12724.00†	90.000	270.426	7270.00	5350.18	600.75	-5318.81	0.00	
12824.00†	90.000	270.426	7270.00	5449.91	601.49	-5418.81	0.00	
12924.00†	90.000	270.426	7270.00	5549.63	602.24	-5518.80	0.00	
13024.00†	90.000	270.426	7270.00	5649.35	602.98	-5618.80	0.00	
13124.00†	90.000	270.426	7270.00	5749.07	603.72	-5718.80	0.00	
13224.00†	90.000	270.426	7270.00	5848.79	604.47	-5818.80	0.00	
13324.00†	90.000	270.426	7270.00	5948.51	605.21	-5918.79	0.00	
13424.00†	90.000	270.426	7270.00	6048.23	605.95	-6018.79	0.00	
13524.00†	90.000	270.426	7270.00	6147.95	606.70	-6118.79	0.00	
13624.00†	90.000	270.426	7270.00	6247.67	607.44	-6218.78	0.00	
13724.00†	90.000	270.426	7270.00	6347.39	608.19	-6318.78	0.00	
13824.00†	90.000	270.426	7270.00	6447.11	608.93	-6418.78	0.00	
13924.00†	90.000	270.426	7270.00	6546.83	609.67	-6518.78	0.00	
14024.00†	90.000	270.426	7270.00	6646.55	610.42	-6618.77	0.00	
14124.00†	90.000	270.426	7270.00	6746.27	611.16	-6718.77	0.00	
14224.00†	90.000	270.426	7270.00	6845.99	611.90	-6818.77	0.00	
14324.00†	90.000	270.426	7270.00	6945.71	612.65	-6918.76	0.00	
14424.00†	90.000	270.426	7270.00	7045.43	613.39	-7018.76	0.00	



Planned Wellpath Report

LAUNER 7 (REV-B.0) PWP

Page 7 of 8



REFERENCE WELLPATH IDENTIFICATION

Operator	EXTRACTION OIL & GAS	Slot	SLOT#19 LAUNER 7(769'FSL & 364'FEL,SEC.26)
Area	COLORADO	Well	LAUNER 7
Field	WELD COUNTY (NAD83/TRUE NORTH)	Wellbore	LAUNER 7 PWB
Facility	SEC.26-T07N-R67W		

WELLPATH DATA (155 stations) † = interpolated/extrapolated station

MD [ft]	Inclination [°]	Azimuth [°]	TVD [ft]	Vert Sect [ft]	North [ft]	East [ft]	DLS [°/100ft]	Comments
14524.00†	90.000	270.426	7270.00	7145.15	614.14	-7118.76	0.00	
14624.00†	90.000	270.426	7270.00	7244.87	614.88	-7218.76	0.00	
14724.00†	90.000	270.426	7270.00	7344.59	615.62	-7318.75	0.00	
14824.00†	90.000	270.426	7270.00	7444.31	616.37	-7418.75	0.00	
14887.32	90.000	270.426	7270.00 ²	7507.45	616.84	-7482.07	0.00	End of Tangent

HOLE & CASING SECTIONS - Ref Wellbore: LAUNER 7 PWB Ref Wellpath: LAUNER 7 (REV-B.0) PWP

String/Diameter	Start MD [ft]	End MD [ft]	Interval [ft]	Start TVD [ft]	End TVD [ft]	Start N/S [ft]	Start E/W [ft]	End N/S [ft]	End E/W [ft]
7in Casing Intermediate	24.00	7632.05	7608.05	24.00	7270.00	0.00	0.00	562.88	-227.00



Planned Wellpath Report

LAUNER 7 (REV-B.0) PWP

Page 8 of 8



REFERENCE WELLPATH IDENTIFICATION			
Operator	EXTRACTION OIL & GAS	Slot	SLOT#19 LAUNER 7(769'FSL & 364'FEL,SEC.26)
Area	COLORADO	Well	LAUNER 7
Field	WELD COUNTY (NAD83/TRUE NORTH)	Wellbore	LAUNER 7 PWB
Facility	SEC.26-T07N-R67W		

TARGETS									
Name	MD [ft]	TVD [ft]	North [ft]	East [ft]	Grid East [US ft]	Grid North [US ft]	Latitude	Longitude	Shape
SEC.26-T07N-R67W		-17.00	4024.30	-137.00	3179860.07	1444245.18	40°33'03.784"N	104°51'09.932"W	polygon
SEC.27-T07N-R67W		-17.00	4024.30	-137.00	3179860.07	1444245.18	40°33'03.784"N	104°51'09.932"W	polygon
2) LAUNER 7 BHL ON PLAT REV-1(1394'FSL & 2561'FEL,SEC.27)	14887.32	7270.00	616.84	-7482.07	3172540.33	1440784.27	40°32'30.102"N	104°52'45.070"W	point
LAUNER 7 DRILLING CORRIDOR(60')		7270.00	0.00	0.00	3180026.46	1440222.12	40°32'24.018"N	104°51'08.158"W	polygon
LAUNER 7 LANDING		7270.00	562.88	-95.33	3179927.02	1440784.27	40°32'29.580"N	104°51'09.392"W	point
1) LAUNER 7 LANDING REV-1	7632.05	7270.00	562.88	-227.00	3179795.36	1440783.31	40°32'29.580"N	104°51'11.098"W	point

SURVEY PROGRAM - Ref Wellbore: LAUNER 7 PWB Ref Wellpath: LAUNER 7 (REV-B.0) PWP				
Start MD [ft]	End MD [ft]	Positional Uncertainty Model	Log Name/Comment	Wellbore
24.00	16000.00	NaviTrak (Standard)		LAUNER 7 PWB