

EXTRACTION OIL & GAS

Location: COLORADO Slot: SLOT#17 LAUNER 5(815'FSL & 333'FEL,SEC.26)
Field: WELD COUNTY (NAD83/TRUE NORTH) Well: LAUNER 5
Facility: SEC.26-T07N-R67W Wellbore: LAUNER 5 PWB

Plot reference wellpath is LAUNER 5 (REV-B.0) PWP

True vertical depths are referenced to RIG (RKB)	Grid System: NAD83 / Lambert Colorado SP, Northern Zone (501), US feet
Measured depths are referenced to RIG (RKB)	North Reference: True north
RIG (RKB) to Mean Sea Level: 4955 feet	Scale: True distance
Mean Sea Level to Mud line (At Slot: SLOT#17 LAUNER 5(815'FSL & 333'FEL,SEC.26)): 0 feet	Depths are in feet
Coordinates are in feet referenced to Slot	Created by: painsett on 10/7/2014

Location Information

Facility Name			Grid East (US ft)	Grid North (US ft)	Latitude	Longitude
SEC.26-T07N-R67W			3179860.101	1444245.219	40°33'03.784"N	104°51'09.932"W
Slot	Local N (ft)	Local E (ft)	Grid East (US ft)	Grid North (US ft)	Latitude	Longitude
SLOT#17 LAUNER 5(815'FSL & 333'FEL,SEC.26)	-3978.06	168.68	3180057.806	1440268.619	40°32'24.475"N	104°51'07.747"W
RIG (RKB) to Mud line (At Slot: SLOT#17 LAUNER 5(815'FSL & 333'FEL,SEC.26))					4955ft	
Mean Sea Level to Mud line (At Slot: SLOT#17 LAUNER 5(815'FSL & 333'FEL,SEC.26))					0ft	
RIG (RKB) to Mean Sea Level					4955ft	

Targets

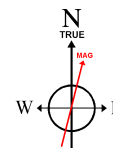
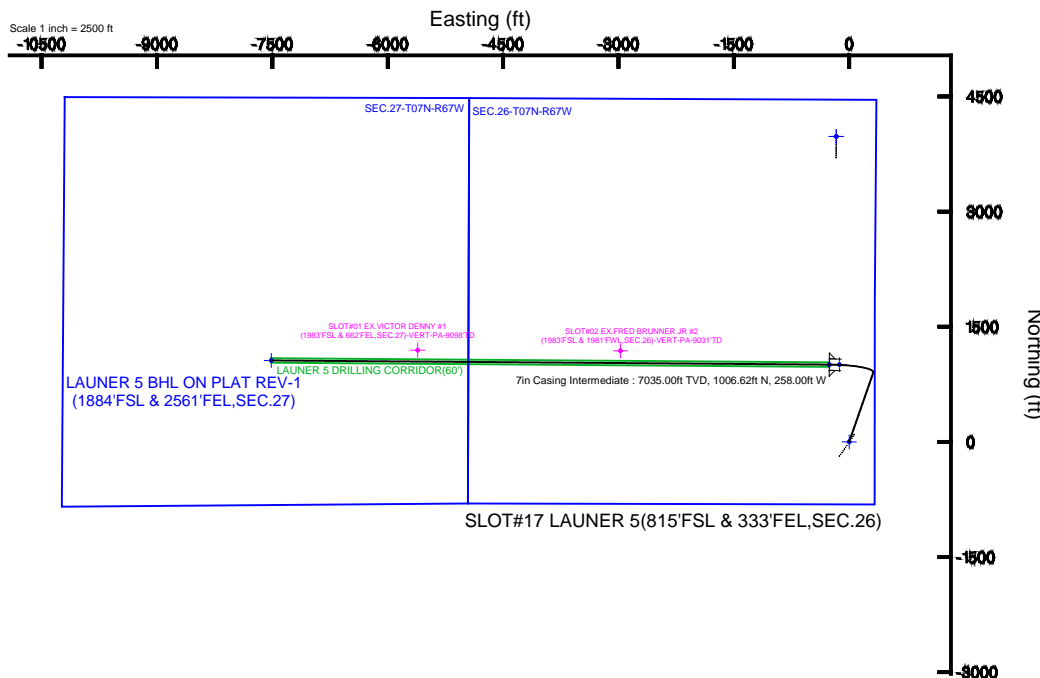
Name	MD (ft)	TVD (ft)	Local N (ft)	Local E (ft)	Grid East (US ft)	Grid North (US ft)	Latitude	Longitude
SEC.26-T07N-R67W		-17.00	3978.03	-168.68	3179860.07	1444245.18	40°33'03.784"N	104°51'09.932"W
SEC.27-T07N-R67W		-17.00	3978.03	-168.68	3179860.07	1444245.18	40°33'03.784"N	104°51'09.932"W
LAUNER 5 BHL ON PLAT REV-1(1884'FSL & 2561'FEL,SEC.27)	14708.88	7035.00	1060.59	-7512.77	3172537.73	1441274.26	40°32'34.944"N	104°52'45.059"W
LAUNER 5 DRILLING CORRIDOR(60')		7035.00	0.00	0.00	3180057.81	1440268.62	40°32'24.475"N	104°51'07.747"W
LAUNER 5 LANDING		7035.00	1006.62	-126.74	3179923.72	1441274.25	40°32'34.422"N	104°51'09.389"W
LAUNER 5 LANDING REV-1	7453.90	7035.00	1006.62	-258.00	3179792.47	1441273.29	40°32'34.422"N	104°51'11.089"W

Survey Program

Start MD (ft)	End MD (ft)	Tool	Model	Log Name/Comment	Wellbore
24.00	15000.00	NaviTrak	NaviTrak (Standard)		LAUNER 5 PWB

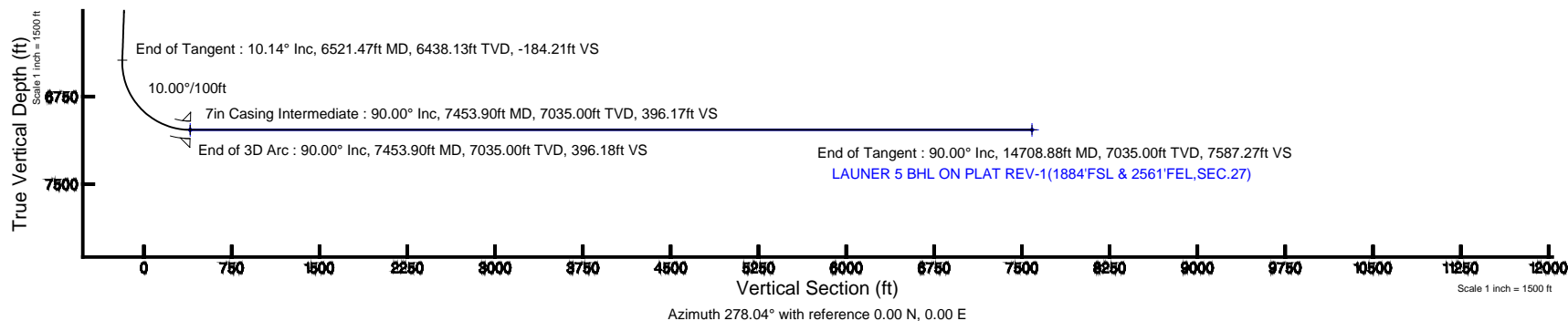
Well Profile Data

Design Comment	MD (ft)	Inc (°)	Az (°)	TVD (ft)	Local N (ft)	Local E (ft)	DLS (°/100ft)	VS (ft)
Tie On	24.00	0.000	19.167	24.00	0.00	0.00	0.00	0.00
End of Tangent	850.00	0.000	19.167	850.00	0.00	0.00	0.00	0.00
End of Build	1357.10	10.142	19.167	1354.46	42.28	14.70	2.00	-8.64
End of Tangent	6521.47	10.142	19.167	6438.13	901.26	313.27	0.00	-184.21
End of 3D Arc	7453.90	90.000	270.426	7035.00	1006.62	-258.00	10.00	396.18
End of Tangent	14708.88	90.000	270.426	7035.00	1060.59	-7512.77	0.00	7587.27



BGGM (1945.0 to 2016.0) Dip: 67.04° Field: 52816.5 nT
Magnetic North is 8.59 degrees East of True North (at 7/24/2014)

To correct azimuth from Magnetic to True add 8.59 degrees





Planned Wellpath Report

LAUNER 5 (REV-B.0) PWP

Page 1 of 8



REFERENCE WELLPATH IDENTIFICATION

Operator	EXTRACTION OIL & GAS	Slot	SLOT#17 LAUNER 5(815'FSL & 333'FEL,SEC.26)
Area	COLORADO	Well	LAUNER 5
Field	WELD COUNTY (NAD83/TRUE NORTH)	Wellbore	LAUNER 5 PWB
Facility	SEC.26-T07N-R67W		

REPORT SETUP INFORMATION

Projection System	NAD83 / Lambert Colorado SP, Northern Zone (501), US feet	Software System	WellArchitect® 4.0.0
North Reference	True	User	Painsetr
Scale	0.99997	Report Generated	10/7/2014 at 1:20:37 PM
Convergence at slot	n/a	Database/Source file	WA_Denver/LAUNER_5_PWB.xml

WELLPATH LOCATION

	Local coordinates		Grid coordinates		Geographic coordinates	
	North[ft]	East[ft]	Easting[US ft]	Northing[US ft]	Latitude	Longitude
Slot Location	-3978.06	168.68	3180057.81	1440268.62	40°32'24.475"N	104°51'07.747"W
Facility Reference Pt			3179860.10	1444245.22	40°33'03.784"N	104°51'09.932"W
Field Reference Pt			3185481.27	1419166.81	40°28'55.560"N	104°49'59.556"W

WELLPATH DATUM

Calculation method	Minimum curvature	RIG (RKB) to Facility Vertical Datum	4955.00ft
Horizontal Reference Pt	Slot	RIG (RKB) to Mean Sea Level	4955.00ft
Vertical Reference Pt	RIG (RKB)	RIG (RKB) to Mud Line at Slot (SLOT#17 LAUNER 5(815'FSL & 333'FEL,SEC.26))	4955.00ft
MD Reference Pt	RIG (RKB)	Section Origin	N 0.00, E 0.00 ft
Field Vertical Reference	Mean Sea Level	Section Azimuth	278.04°



Planned Wellpath Report

LAUNER 5 (REV-B.0) PWP

Page 2 of 8



REFERENCE WELLPATH IDENTIFICATION

Operator	EXTRACTION OIL & GAS	Slot	SLOT#17 LAUNER 5(815'FSL & 333'FEL,SEC.26)
Area	COLORADO	Well	LAUNER 5
Field	WELD COUNTY (NAD83/TRUE NORTH)	Wellbore	LAUNER 5 PWB
Facility	SEC.26-T07N-R67W		

WELLPATH DATA (153 stations) † = interpolated/extrapolated station

MD [ft]	Inclination [°]	Azimuth [°]	TVD [ft]	Vert Sect [ft]	North [ft]	East [ft]	DLS [°/100ft]	Comments
0.00†	0.000	19.167	0.00	0.00	0.00	0.00	0.00	
24.00	0.000	19.167	24.00	0.00	0.00	0.00	0.00	Tie On
124.00†	0.000	19.167	124.00	0.00	0.00	0.00	0.00	
224.00†	0.000	19.167	224.00	0.00	0.00	0.00	0.00	
324.00†	0.000	19.167	324.00	0.00	0.00	0.00	0.00	
424.00†	0.000	19.167	424.00	0.00	0.00	0.00	0.00	
524.00†	0.000	19.167	524.00	0.00	0.00	0.00	0.00	
624.00†	0.000	19.167	624.00	0.00	0.00	0.00	0.00	
724.00†	0.000	19.167	724.00	0.00	0.00	0.00	0.00	
824.00†	0.000	19.167	824.00	0.00	0.00	0.00	0.00	
850.00	0.000	19.167	850.00	0.00	0.00	0.00	0.00	End of Tangent
924.00†	1.480	19.167	923.99	-0.18	0.90	0.31	2.00	
1024.00†	3.480	19.167	1023.89	-1.02	4.99	1.73	2.00	
1124.00†	5.480	19.167	1123.58	-2.53	12.37	4.30	2.00	
1224.00†	7.480	19.167	1222.94	-4.71	23.03	8.00	2.00	
1324.00†	9.480	19.167	1321.84	-7.55	36.96	12.85	2.00	
1357.10	10.142	19.167	1354.46	-8.64	42.28	14.70	2.00	End of Build
1424.00†	10.142	19.167	1420.31	-10.92	53.41	18.56	0.00	
1524.00†	10.142	19.167	1518.75	-14.32	70.04	24.35	0.00	
1624.00†	10.142	19.167	1617.19	-17.72	86.68	30.13	0.00	
1724.00†	10.142	19.167	1715.62	-21.12	103.31	35.91	0.00	
1824.00†	10.142	19.167	1814.06	-24.52	119.94	41.69	0.00	
1924.00†	10.142	19.167	1912.50	-27.92	136.57	47.47	0.00	
2024.00†	10.142	19.167	2010.94	-31.31	153.21	53.25	0.00	
2124.00†	10.142	19.167	2109.37	-34.71	169.84	59.04	0.00	
2224.00†	10.142	19.167	2207.81	-38.11	186.47	64.82	0.00	
2324.00†	10.142	19.167	2306.25	-41.51	203.10	70.60	0.00	
2424.00†	10.142	19.167	2404.68	-44.91	219.74	76.38	0.00	
2524.00†	10.142	19.167	2503.12	-48.31	236.37	82.16	0.00	
2624.00†	10.142	19.167	2601.56	-51.71	253.00	87.94	0.00	



Planned Wellpath Report

LAUNER 5 (REV-B.0) PWP

Page 3 of 8



REFERENCE WELLPATH IDENTIFICATION

Operator	EXTRACTION OIL & GAS	Slot	SLOT#17 LAUNER 5(815'FSL & 333'FEL,SEC.26)
Area	COLORADO	Well	LAUNER 5
Field	WELD COUNTY (NAD83/TRUE NORTH)	Wellbore	LAUNER 5 PWB
Facility	SEC.26-T07N-R67W		

WELLPATH DATA (153 stations) † = interpolated/extrapolated station

MD [ft]	Inclination [°]	Azimuth [°]	TVD [ft]	Vert Sect [ft]	North [ft]	East [ft]	DLS [°/100ft]	Comments
2724.00†	10.142	19.167	2700.00	-55.11	269.64	93.72	0.00	
2824.00†	10.142	19.167	2798.43	-58.51	286.27	99.51	0.00	
2924.00†	10.142	19.167	2896.87	-61.91	302.90	105.29	0.00	
3024.00†	10.142	19.167	2995.31	-65.31	319.53	111.07	0.00	
3124.00†	10.142	19.167	3093.75	-68.71	336.17	116.85	0.00	
3224.00†	10.142	19.167	3192.18	-72.11	352.80	122.63	0.00	
3324.00†	10.142	19.167	3290.62	-75.51	369.43	128.41	0.00	
3424.00†	10.142	19.167	3389.06	-78.91	386.06	134.19	0.00	
3524.00†	10.142	19.167	3487.50	-82.31	402.70	139.98	0.00	
3624.00†	10.142	19.167	3585.93	-85.71	419.33	145.76	0.00	
3724.00†	10.142	19.167	3684.37	-89.11	435.96	151.54	0.00	
3824.00†	10.142	19.167	3782.81	-92.51	452.59	157.32	0.00	
3924.00†	10.142	19.167	3881.25	-95.91	469.23	163.10	0.00	
4024.00†	10.142	19.167	3979.68	-99.31	485.86	168.88	0.00	
4124.00†	10.142	19.167	4078.12	-102.71	502.49	174.66	0.00	
4224.00†	10.142	19.167	4176.56	-106.11	519.13	180.45	0.00	
4324.00†	10.142	19.167	4275.00	-109.51	535.76	186.23	0.00	
4424.00†	10.142	19.167	4373.43	-112.91	552.39	192.01	0.00	
4524.00†	10.142	19.167	4471.87	-116.31	569.02	197.79	0.00	
4624.00†	10.142	19.167	4570.31	-119.71	585.66	203.57	0.00	
4724.00†	10.142	19.167	4668.75	-123.11	602.29	209.35	0.00	
4824.00†	10.142	19.167	4767.18	-126.51	618.92	215.13	0.00	
4924.00†	10.142	19.167	4865.62	-129.90	635.55	220.92	0.00	
5024.00†	10.142	19.167	4964.06	-133.30	652.19	226.70	0.00	
5124.00†	10.142	19.167	5062.50	-136.70	668.82	232.48	0.00	
5224.00†	10.142	19.167	5160.93	-140.10	685.45	238.26	0.00	
5324.00†	10.142	19.167	5259.37	-143.50	702.09	244.04	0.00	
5424.00†	10.142	19.167	5357.81	-146.90	718.72	249.82	0.00	
5524.00†	10.142	19.167	5456.25	-150.30	735.35	255.60	0.00	
5624.00†	10.142	19.167	5554.68	-153.70	751.98	261.39	0.00	



Planned Wellpath Report

LAUNER 5 (REV-B.0) PWP

Page 4 of 8



REFERENCE WELLPATH IDENTIFICATION			
Operator	EXTRACTION OIL & GAS	Slot	SLOT#17 LAUNER 5(815'FSL & 333'FEL,SEC.26)
Area	COLORADO	Well	LAUNER 5
Field	WELD COUNTY (NAD83/TRUE NORTH)	Wellbore	LAUNER 5 PWB
Facility	SEC.26-T07N-R67W		

WELLPATH DATA (153 stations) † = interpolated/extrapolated station								
MD [ft]	Inclination [°]	Azimuth [°]	TVD [ft]	Vert Sect [ft]	North [ft]	East [ft]	DLS [°/100ft]	Comments
5724.00†	10.142	19.167	5653.12	-157.10	768.62	267.17	0.00	
5824.00†	10.142	19.167	5751.56	-160.50	785.25	272.95	0.00	
5924.00†	10.142	19.167	5850.00	-163.90	801.88	278.73	0.00	
6024.00†	10.142	19.167	5948.43	-167.30	818.51	284.51	0.00	
6124.00†	10.142	19.167	6046.87	-170.70	835.15	290.29	0.00	
6224.00†	10.142	19.167	6145.31	-174.10	851.78	296.07	0.00	
6324.00†	10.142	19.167	6243.74	-177.50	868.41	301.86	0.00	
6424.00†	10.142	19.167	6342.18	-180.90	885.05	307.64	0.00	
6521.47	10.142	19.167	6438.13	-184.21	901.26	313.27	0.00	End of Tangent
6524.00†	10.065	17.794	6440.62	-184.29	901.68	313.41	10.00	
6624.00†	11.879	324.067	6539.03	-178.62	918.37	310.03	10.00	
6724.00†	19.469	299.059	6635.34	-155.86	934.84	289.38	10.00	
6824.00†	28.548	288.568	6726.64	-116.71	950.59	252.06	10.00	
6924.00†	38.064	282.919	6810.14	-62.36	965.13	199.23	10.00	
7024.00†	47.755	279.276	6883.30	5.53	978.02	132.48	10.00	
7124.00†	57.531	276.614	6943.92	84.91	988.87	53.85	10.00	
7224.00†	67.351	274.480	6990.13	173.36	997.35	-34.28	10.00	
7324.00†	77.195	272.633	7020.54	268.19	1003.21	-129.23	10.00	
7424.00†	87.052	270.926	7034.23	366.53	1006.27	-228.11	10.00	
7453.90	90.000	270.426	7035.00 ¹	396.18	1006.62	-258.00	10.00	End of 3D Arc
7524.00†	90.000	270.426	7035.00	465.66	1007.14	-328.09	0.00	
7624.00†	90.000	270.426	7035.00	564.78	1007.88	-428.09	0.00	
7724.00†	90.000	270.426	7035.00	663.90	1008.63	-528.09	0.00	
7824.00†	90.000	270.426	7035.00	763.02	1009.37	-628.09	0.00	
7924.00†	90.000	270.426	7035.00	862.13	1010.12	-728.08	0.00	
8024.00†	90.000	270.426	7035.00	961.25	1010.86	-828.08	0.00	
8124.00†	90.000	270.426	7035.00	1060.37	1011.60	-928.08	0.00	
8224.00†	90.000	270.426	7035.00	1159.49	1012.35	-1028.07	0.00	
8324.00†	90.000	270.426	7035.00	1258.61	1013.09	-1128.07	0.00	
8424.00†	90.000	270.426	7035.00	1357.73	1013.84	-1228.07	0.00	



Planned Wellpath Report

LAUNER 5 (REV-B.0) PWP

Page 5 of 8



REFERENCE WELLPATH IDENTIFICATION

Operator	EXTRACTION OIL & GAS	Slot	SLOT#17 LAUNER 5(815'FSL & 333'FEL,SEC.26)
Area	COLORADO	Well	LAUNER 5
Field	WELD COUNTY (NAD83/TRUE NORTH)	Wellbore	LAUNER 5 PWB
Facility	SEC.26-T07N-R67W		

WELLPATH DATA (153 stations) † = interpolated/extrapolated station

MD [ft]	Inclination [°]	Azimuth [°]	TVD [ft]	Vert Sect [ft]	North [ft]	East [ft]	DLS [°/100ft]	Comments
8524.00†	90.000	270.426	7035.00	1456.85	1014.58	-1328.07	0.00	
8624.00†	90.000	270.426	7035.00	1555.97	1015.32	-1428.06	0.00	
8724.00†	90.000	270.426	7035.00	1655.09	1016.07	-1528.06	0.00	
8824.00†	90.000	270.426	7035.00	1754.21	1016.81	-1628.06	0.00	
8924.00†	90.000	270.426	7035.00	1853.33	1017.56	-1728.06	0.00	
9024.00†	90.000	270.426	7035.00	1952.45	1018.30	-1828.05	0.00	
9124.00†	90.000	270.426	7035.00	2051.57	1019.04	-1928.05	0.00	
9224.00†	90.000	270.426	7035.00	2150.69	1019.79	-2028.05	0.00	
9324.00†	90.000	270.426	7035.00	2249.81	1020.53	-2128.04	0.00	
9424.00†	90.000	270.426	7035.00	2348.93	1021.28	-2228.04	0.00	
9524.00†	90.000	270.426	7035.00	2448.05	1022.02	-2328.04	0.00	
9624.00†	90.000	270.426	7035.00	2547.16	1022.76	-2428.04	0.00	
9724.00†	90.000	270.426	7035.00	2646.28	1023.51	-2528.03	0.00	
9824.00†	90.000	270.426	7035.00	2745.40	1024.25	-2628.03	0.00	
9924.00†	90.000	270.426	7035.00	2844.52	1025.00	-2728.03	0.00	
10024.00†	90.000	270.426	7035.00	2943.64	1025.74	-2828.03	0.00	
10124.00†	90.000	270.426	7035.00	3042.76	1026.48	-2928.02	0.00	
10224.00†	90.000	270.426	7035.00	3141.88	1027.23	-3028.02	0.00	
10324.00†	90.000	270.426	7035.00	3241.00	1027.97	-3128.02	0.00	
10424.00†	90.000	270.426	7035.00	3340.12	1028.71	-3228.01	0.00	
10524.00†	90.000	270.426	7035.00	3439.24	1029.46	-3328.01	0.00	
10624.00†	90.000	270.426	7035.00	3538.36	1030.20	-3428.01	0.00	
10724.00†	90.000	270.426	7035.00	3637.48	1030.95	-3528.01	0.00	
10824.00†	90.000	270.426	7035.00	3736.60	1031.69	-3628.00	0.00	
10924.00†	90.000	270.426	7035.00	3835.72	1032.43	-3728.00	0.00	
11024.00†	90.000	270.426	7035.00	3934.84	1033.18	-3828.00	0.00	
11124.00†	90.000	270.426	7035.00	4033.96	1033.92	-3927.99	0.00	
11224.00†	90.000	270.426	7035.00	4133.08	1034.67	-4027.99	0.00	
11324.00†	90.000	270.426	7035.00	4232.20	1035.41	-4127.99	0.00	
11424.00†	90.000	270.426	7035.00	4331.31	1036.15	-4227.99	0.00	



Planned Wellpath Report

LAUNER 5 (REV-B.0) PWP

Page 6 of 8



REFERENCE WELLPATH IDENTIFICATION

Operator	EXTRACTION OIL & GAS	Slot	SLOT#17 LAUNER 5(815'FSL & 333'FEL,SEC.26)
Area	COLORADO	Well	LAUNER 5
Field	WELD COUNTY (NAD83/TRUE NORTH)	Wellbore	LAUNER 5 PWB
Facility	SEC.26-T07N-R67W		

WELLPATH DATA (153 stations) † = interpolated/extrapolated station

MD [ft]	Inclination [°]	Azimuth [°]	TVD [ft]	Vert Sect [ft]	North [ft]	East [ft]	DLS [°/100ft]	Comments
11524.00†	90.000	270.426	7035.00	4430.43	1036.90	-4327.98	0.00	
11624.00†	90.000	270.426	7035.00	4529.55	1037.64	-4427.98	0.00	
11724.00†	90.000	270.426	7035.00	4628.67	1038.39	-4527.98	0.00	
11824.00†	90.000	270.426	7035.00	4727.79	1039.13	-4627.98	0.00	
11924.00†	90.000	270.426	7035.00	4826.91	1039.87	-4727.97	0.00	
12024.00†	90.000	270.426	7035.00	4926.03	1040.62	-4827.97	0.00	
12124.00†	90.000	270.426	7035.00	5025.15	1041.36	-4927.97	0.00	
12224.00†	90.000	270.426	7035.00	5124.27	1042.11	-5027.96	0.00	
12324.00†	90.000	270.426	7035.00	5223.39	1042.85	-5127.96	0.00	
12424.00†	90.000	270.426	7035.00	5322.51	1043.59	-5227.96	0.00	
12524.00†	90.000	270.426	7035.00	5421.63	1044.34	-5327.96	0.00	
12624.00†	90.000	270.426	7035.00	5520.75	1045.08	-5427.95	0.00	
12724.00†	90.000	270.426	7035.00	5619.87	1045.82	-5527.95	0.00	
12824.00†	90.000	270.426	7035.00	5718.99	1046.57	-5627.95	0.00	
12924.00†	90.000	270.426	7035.00	5818.11	1047.31	-5727.94	0.00	
13024.00†	90.000	270.426	7035.00	5917.23	1048.06	-5827.94	0.00	
13124.00†	90.000	270.426	7035.00	6016.34	1048.80	-5927.94	0.00	
13224.00†	90.000	270.426	7035.00	6115.46	1049.54	-6027.94	0.00	
13324.00†	90.000	270.426	7035.00	6214.58	1050.29	-6127.93	0.00	
13424.00†	90.000	270.426	7035.00	6313.70	1051.03	-6227.93	0.00	
13524.00†	90.000	270.426	7035.00	6412.82	1051.78	-6327.93	0.00	
13624.00†	90.000	270.426	7035.00	6511.94	1052.52	-6427.93	0.00	
13724.00†	90.000	270.426	7035.00	6611.06	1053.26	-6527.92	0.00	
13824.00†	90.000	270.426	7035.00	6710.18	1054.01	-6627.92	0.00	
13924.00†	90.000	270.426	7035.00	6809.30	1054.75	-6727.92	0.00	
14024.00†	90.000	270.426	7035.00	6908.42	1055.50	-6827.91	0.00	
14124.00†	90.000	270.426	7035.00	7007.54	1056.24	-6927.91	0.00	
14224.00†	90.000	270.426	7035.00	7106.66	1056.98	-7027.91	0.00	
14324.00†	90.000	270.426	7035.00	7205.78	1057.73	-7127.91	0.00	
14424.00†	90.000	270.426	7035.00	7304.90	1058.47	-7227.90	0.00	



Planned Wellpath Report

LAUNER 5 (REV-B.0) PWP

Page 7 of 8



REFERENCE WELLPATH IDENTIFICATION

Operator	EXTRACTION OIL & GAS	Slot	SLOT#17 LAUNER 5(815'FSL & 333'FEL,SEC.26)
Area	COLORADO	Well	LAUNER 5
Field	WELD COUNTY (NAD83/TRUE NORTH)	Wellbore	LAUNER 5 PWB
Facility	SEC.26-T07N-R67W		

WELLPATH DATA (153 stations) † = interpolated/extrapolated station

MD [ft]	Inclination [°]	Azimuth [°]	TVD [ft]	Vert Sect [ft]	North [ft]	East [ft]	DLS [°/100ft]	Comments
14524.00†	90.000	270.426	7035.00	7404.02	1059.22	-7327.90	0.00	
14624.00†	90.000	270.426	7035.00	7503.14	1059.96	-7427.90	0.00	
14708.88	90.000	270.426	7035.00 ²	7587.27	1060.59	-7512.77	0.00	End of Tangent

HOLE & CASING SECTIONS - Ref Wellbore: LAUNER 5 PWB Ref Wellpath: LAUNER 5 (REV-B.0) PWP

String/Diameter	Start MD [ft]	End MD [ft]	Interval [ft]	Start TVD [ft]	End TVD [ft]	Start N/S [ft]	Start E/W [ft]	End N/S [ft]	End E/W [ft]
7in Casing Intermediate	24.00	7453.90	7429.90	24.00	7035.00	0.00	0.00	1006.62	-258.00



Planned Wellpath Report

LAUNER 5 (REV-B.0) PWP

Page 8 of 8



REFERENCE WELLPATH IDENTIFICATION			
Operator	EXTRACTION OIL & GAS	Slot	SLOT#17 LAUNER 5(815'FSL & 333'FEL,SEC.26)
Area	COLORADO	Well	LAUNER 5
Field	WELD COUNTY (NAD83/TRUE NORTH)	Wellbore	LAUNER 5 PWB
Facility	SEC.26-T07N-R67W		

TARGETS									
Name	MD [ft]	TVD [ft]	North [ft]	East [ft]	Grid East [US ft]	Grid North [US ft]	Latitude	Longitude	Shape
SEC.26-T07N-R67W		-17.00	3978.03	-168.68	3179860.07	1444245.18	40°33'03.784"N	104°51'09.932"W	polygon
SEC.27-T07N-R67W		-17.00	3978.03	-168.68	3179860.07	1444245.18	40°33'03.784"N	104°51'09.932"W	polygon
2) LAUNER 5 BHL ON PLAT REV-1(1884'FSL & 2561'FEL,SEC.27)	14708.88	7035.00	1060.59	-7512.77	3172537.73	1441274.26	40°32'34.944"N	104°52'45.059"W	point
LAUNER 5 DRILLING CORRIDOR(60')		7035.00	0.00	0.00	3180057.81	1440268.62	40°32'24.475"N	104°51'07.747"W	polygon
LAUNER 5 LANDING		7035.00	1006.62	-126.74	3179923.72	1441274.25	40°32'34.422"N	104°51'09.389"W	point
1) LAUNER 5 LANDING REV-1	7453.90	7035.00	1006.62	-258.00	3179792.47	1441273.29	40°32'34.422"N	104°51'11.089"W	point

SURVEY PROGRAM - Ref Wellbore: LAUNER 5 PWB Ref Wellpath: LAUNER 5 (REV-B.0) PWP				
Start MD [ft]	End MD [ft]	Positional Uncertainty Model	Log Name/Comment	Wellbore
24.00	15000.00	NaviTrak (Standard)		LAUNER 5 PWB