

EXTRACTION OIL & GAS

Location: COLORADO Slot: SLOT#16 LAUNER 4(838'FSL & 317'FEL,SEC.26)
Field: WELD COUNTY (NAD83/TRUE NORTH) Well: LAUNER 4
Facility: SEC.26-T07N-R67W Wellbore: LAUNER 4 PWB

Plot reference wellpath is LAUNER 4 (REV-B.0) PWP

True vertical depths are referenced to RIG (RKB)	Grid System: NAD83 / Lambert Colorado SP, Northern Zone (501), US feet
Measured depths are referenced to RIG (RKB)	North Reference: True north
RIG (RKB) to Mean Sea Level: 4955 feet	Scale: True distance
Mean Sea Level to Mud line (At Slot: SLOT#16 LAUNER 4(838'FSL & 317'FEL,SEC.26)): 0 feet	Depths are in feet
Coordinates are in feet referenced to Slot	Created by: painsett on 10/7/2014

Location Information

Facility Name				Grid East (US ft)	Grid North (US ft)	Latitude	Longitude
SEC.26-T07N-R67W				3179860.101	1444245.219	40°33'03.784"N	104°51'09.932"W
Slot	Local N (ft)	Local E (ft)	Grid East (US ft)	Grid North (US ft)	Latitude	Longitude	
SLOT#16 LAUNER 4(838'FSL & 317'FEL,SEC.26)	-3955.11	184.52	3180073.481	1440291.685	40°32'24.702"N	104°51'07.542"W	
RIG (RKB) to Mud line (At Slot: SLOT#16 LAUNER 4(838'FSL & 317'FEL,SEC.26))						4955ft	
Mean Sea Level to Mud line (At Slot: SLOT#16 LAUNER 4(838'FSL & 317'FEL,SEC.26))						0ft	
RIG (RKB) to Mean Sea Level						4955ft	

Targets

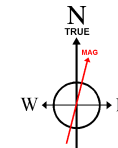
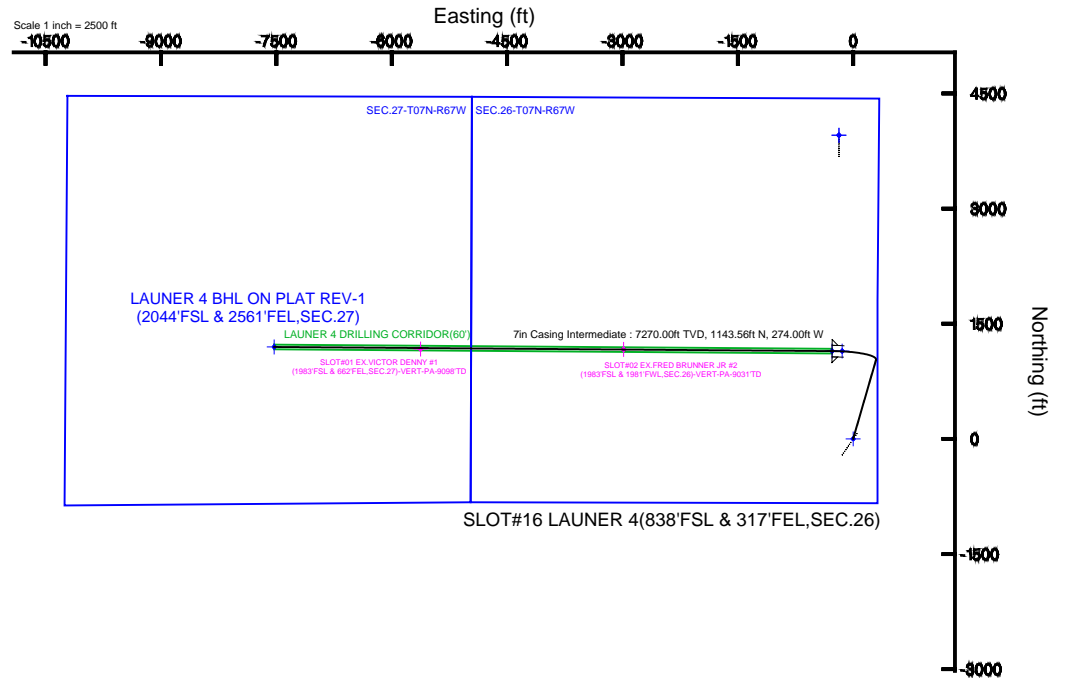
Name	MD (ft)	TVD (ft)	Local N (ft)	Local E (ft)	Grid East (US ft)	Grid North (US ft)	Latitude	Longitude
SEC.26-T07N-R67W		-17.00	3955.07	-184.52	3179860.07	1444245.18	40°33'03.784"N	104°51'09.932"W
SEC.27-T07N-R67W		-17.00	3955.07	-184.52	3179860.07	1444245.18	40°33'03.784"N	104°51'09.932"W
LAUNER 4 BHL ON PLAT REV-1(2044'FSL & 2561'FEL,SEC.27)	14962.13	7270.00	1197.58	-7528.01	3172537.17	1441434.19	40°32'36.524"N	104°52'45.052"W
LAUNER 4 DRILLING CORRIDOR(60')		7270.00	0.00	0.00	3180073.48	1440291.69	40°32'24.702"N	104°51'07.542"W
LAUNER 4 LANDING		7270.00	1143.60	-142.58	3179922.56	1441434.18	40°32'36.002"N	104°51'09.389"W
LAUNER 4 LANDING REV-1	7707.92	7270.00	1143.56	-274.00	3179791.14	1441433.18	40°32'36.002"N	104°51'11.091"W

Survey Program

Start MD (ft)	End MD (ft)	Tool	Model	Log Name/Comment	Wellbore
24.00	16000.00	NavTrak	NavTrak (Standard)		LAUNER 4 PWB

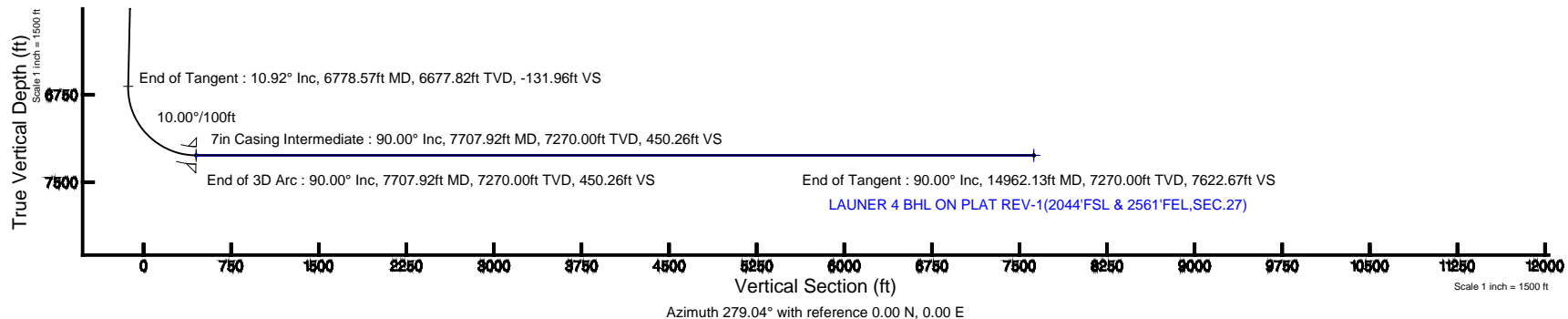
Well Profile Data

Design Comment	MD (ft)	Inc (°)	Az (°)	TVD (ft)	Local N (ft)	Local E (ft)	DLS (°/100ft)	VS (ft)
Tie On	24.00	0.000	16.114	24.00	0.00	0.00	0.00	0.00
End of Tangent	850.00	0.000	16.114	850.00	0.00	0.00	0.00	0.00
End of Build	1395.94	10.919	16.114	1392.64	49.82	14.39	2.00	-6.39
End of Tangent	6778.57	10.919	16.114	6677.82	1029.33	297.37	0.00	-131.96
End of 3D Arc	7707.92	90.000	270.427	7270.00	1143.56	-274.00	10.00	450.26
End of Tangent	14962.13	90.000	270.427	7270.00	1197.58	-7528.01	0.00	7622.67



BGGM (1945.0 to 2016.0) Dip: 67.04° Field: 52816.5 nT
Magnetic North is 8.59 degrees East of True North (at 7/24/2014)

To correct azimuth from Magnetic to True add 8.59 degrees





Planned Wellpath Report

LAUNER 4 (REV-B.0) PWP

Page 1 of 8



REFERENCE WELLPATH IDENTIFICATION

Operator	EXTRACTION OIL & GAS	Slot	SLOT#16 LAUNER 4(838'FSL & 317'FEL,SEC.26)
Area	COLORADO	Well	LAUNER 4
Field	WELD COUNTY (NAD83/TRUE NORTH)	Wellbore	LAUNER 4 PWB
Facility	SEC.26-T07N-R67W		

REPORT SETUP INFORMATION

Projection System	NAD83 / Lambert Colorado SP, Northern Zone (501), US feet	Software System	WellArchitect® 4.0.0
North Reference	True	User	Painsetr
Scale	0.99997	Report Generated	10/7/2014 at 10:49:49 AM
Convergence at slot	n/a	Database/Source file	WA_Denver/LAUNER_4_PWB.xml

WELLPATH LOCATION

	Local coordinates		Grid coordinates		Geographic coordinates	
	North[ft]	East[ft]	Easting[US ft]	Northing[US ft]	Latitude	Longitude
Slot Location	-3955.11	184.52	3180073.48	1440291.69	40°32'24.702"N	104°51'07.542"W
Facility Reference Pt			3179860.10	1444245.22	40°33'03.784"N	104°51'09.932"W
Field Reference Pt			3185481.27	1419166.81	40°28'55.560"N	104°49'59.556"W

WELLPATH DATUM

Calculation method	Minimum curvature	RIG (RKB) to Facility Vertical Datum	4955.00ft
Horizontal Reference Pt	Slot	RIG (RKB) to Mean Sea Level	4955.00ft
Vertical Reference Pt	RIG (RKB)	RIG (RKB) to Mud Line at Slot (SLOT#16 LAUNER 4(838'FSL & 317'FEL,SEC.26))	4955.00ft
MD Reference Pt	RIG (RKB)	Section Origin	N 0.00, E 0.00 ft
Field Vertical Reference	Mean Sea Level	Section Azimuth	279.04°



Planned Wellpath Report

LAUNER 4 (REV-B.0) PWP

Page 2 of 8



REFERENCE WELLPATH IDENTIFICATION

Operator	EXTRACTION OIL & GAS	Slot	SLOT#16 LAUNER 4(838'FSL & 317'FEL,SEC.26)
Area	COLORADO	Well	LAUNER 4
Field	WELD COUNTY (NAD83/TRUE NORTH)	Wellbore	LAUNER 4 PWB
Facility	SEC.26-T07N-R67W		

WELLPATH DATA (156 stations) † = interpolated/extrapolated station

MD [ft]	Inclination [°]	Azimuth [°]	TVD [ft]	Vert Sect [ft]	North [ft]	East [ft]	DLS [°/100ft]	Comments
0.00†	0.000	16.114	0.00	0.00	0.00	0.00	0.00	
24.00	0.000	16.114	24.00	0.00	0.00	0.00	0.00	Tie On
124.00†	0.000	16.114	124.00	0.00	0.00	0.00	0.00	
224.00†	0.000	16.114	224.00	0.00	0.00	0.00	0.00	
324.00†	0.000	16.114	324.00	0.00	0.00	0.00	0.00	
424.00†	0.000	16.114	424.00	0.00	0.00	0.00	0.00	
524.00†	0.000	16.114	524.00	0.00	0.00	0.00	0.00	
624.00†	0.000	16.114	624.00	0.00	0.00	0.00	0.00	
724.00†	0.000	16.114	724.00	0.00	0.00	0.00	0.00	
824.00†	0.000	16.114	824.00	0.00	0.00	0.00	0.00	
850.00	0.000	16.114	850.00	0.00	0.00	0.00	0.00	End of Tangent
924.00†	1.480	16.114	923.99	-0.12	0.92	0.27	2.00	
1024.00†	3.480	16.114	1023.89	-0.65	5.07	1.47	2.00	
1124.00†	5.480	16.114	1123.58	-1.61	12.58	3.63	2.00	
1224.00†	7.480	16.114	1222.94	-3.00	23.42	6.77	2.00	
1324.00†	9.480	16.114	1321.84	-4.82	37.59	10.86	2.00	
1395.94	10.919	16.114	1392.64	-6.39	49.82	14.39	2.00	End of Build
1424.00†	10.919	16.114	1420.19	-7.04	54.93	15.87	0.00	
1524.00†	10.919	16.114	1518.38	-9.38	73.13	21.13	0.00	
1624.00†	10.919	16.114	1616.57	-11.71	91.33	26.38	0.00	
1724.00†	10.919	16.114	1714.76	-14.04	109.52	31.64	0.00	
1824.00†	10.919	16.114	1812.95	-16.37	127.72	36.90	0.00	
1924.00†	10.919	16.114	1911.14	-18.71	145.92	42.16	0.00	
2024.00†	10.919	16.114	2009.33	-21.04	164.12	47.41	0.00	
2124.00†	10.919	16.114	2107.52	-23.37	182.31	52.67	0.00	
2224.00†	10.919	16.114	2205.71	-25.71	200.51	57.93	0.00	
2324.00†	10.919	16.114	2303.90	-28.04	218.71	63.18	0.00	
2424.00†	10.919	16.114	2402.09	-30.37	236.91	68.44	0.00	
2524.00†	10.919	16.114	2500.28	-32.71	255.10	73.70	0.00	
2624.00†	10.919	16.114	2598.47	-35.04	273.30	78.96	0.00	



Planned Wellpath Report

LAUNER 4 (REV-B.0) PWP

Page 3 of 8



REFERENCE WELLPATH IDENTIFICATION

Operator	EXTRACTION OIL & GAS	Slot	SLOT#16 LAUNER 4(838'FSL & 317'FEL,SEC.26)
Area	COLORADO	Well	LAUNER 4
Field	WELD COUNTY (NAD83/TRUE NORTH)	Wellbore	LAUNER 4 PWB
Facility	SEC.26-T07N-R67W		

WELLPATH DATA (156 stations) † = interpolated/extrapolated station

MD [ft]	Inclination [°]	Azimuth [°]	TVD [ft]	Vert Sect [ft]	North [ft]	East [ft]	DLS [°/100ft]	Comments
2724.00†	10.919	16.114	2696.66	-37.37	291.50	84.21	0.00	
2824.00†	10.919	16.114	2794.85	-39.70	309.70	89.47	0.00	
2924.00†	10.919	16.114	2893.04	-42.04	327.89	94.73	0.00	
3024.00†	10.919	16.114	2991.23	-44.37	346.09	99.99	0.00	
3124.00†	10.919	16.114	3089.42	-46.70	364.29	105.24	0.00	
3224.00†	10.919	16.114	3187.61	-49.04	382.49	110.50	0.00	
3324.00†	10.919	16.114	3285.80	-51.37	400.68	115.76	0.00	
3424.00†	10.919	16.114	3383.99	-53.70	418.88	121.01	0.00	
3524.00†	10.919	16.114	3482.18	-56.03	437.08	126.27	0.00	
3624.00†	10.919	16.114	3580.37	-58.37	455.27	131.53	0.00	
3724.00†	10.919	16.114	3678.56	-60.70	473.47	136.79	0.00	
3824.00†	10.919	16.114	3776.75	-63.03	491.67	142.04	0.00	
3924.00†	10.919	16.114	3874.94	-65.37	509.87	147.30	0.00	
4024.00†	10.919	16.114	3973.13	-67.70	528.06	152.56	0.00	
4124.00†	10.919	16.114	4071.32	-70.03	546.26	157.81	0.00	
4224.00†	10.919	16.114	4169.50	-72.37	564.46	163.07	0.00	
4324.00†	10.919	16.114	4267.69	-74.70	582.66	168.33	0.00	
4424.00†	10.919	16.114	4365.88	-77.03	600.85	173.59	0.00	
4524.00†	10.919	16.114	4464.07	-79.36	619.05	178.84	0.00	
4624.00†	10.919	16.114	4562.26	-81.70	637.25	184.10	0.00	
4724.00†	10.919	16.114	4660.45	-84.03	655.45	189.36	0.00	
4824.00†	10.919	16.114	4758.64	-86.36	673.64	194.62	0.00	
4924.00†	10.919	16.114	4856.83	-88.70	691.84	199.87	0.00	
5024.00†	10.919	16.114	4955.02	-91.03	710.04	205.13	0.00	
5124.00†	10.919	16.114	5053.21	-93.36	728.24	210.39	0.00	
5224.00†	10.919	16.114	5151.40	-95.70	746.43	215.64	0.00	
5324.00†	10.919	16.114	5249.59	-98.03	764.63	220.90	0.00	
5424.00†	10.919	16.114	5347.78	-100.36	782.83	226.16	0.00	
5524.00†	10.919	16.114	5445.97	-102.69	801.03	231.42	0.00	
5624.00†	10.919	16.114	5544.16	-105.03	819.22	236.67	0.00	



Planned Wellpath Report

LAUNER 4 (REV-B.0) PWP

Page 4 of 8



REFERENCE WELLPATH IDENTIFICATION

Operator	EXTRACTION OIL & GAS	Slot	SLOT#16 LAUNER 4(838'FSL & 317'FEL,SEC.26)
Area	COLORADO	Well	LAUNER 4
Field	WELD COUNTY (NAD83/TRUE NORTH)	Wellbore	LAUNER 4 PWB
Facility	SEC.26-T07N-R67W		

WELLPATH DATA (156 stations) † = interpolated/extrapolated station

MD [ft]	Inclination [°]	Azimuth [°]	TVD [ft]	Vert Sect [ft]	North [ft]	East [ft]	DLS [°/100ft]	Comments
5724.00†	10.919	16.114	5642.35	-107.36	837.42	241.93	0.00	
5824.00†	10.919	16.114	5740.54	-109.69	855.62	247.19	0.00	
5924.00†	10.919	16.114	5838.73	-112.03	873.82	252.44	0.00	
6024.00†	10.919	16.114	5936.92	-114.36	892.01	257.70	0.00	
6124.00†	10.919	16.114	6035.11	-116.69	910.21	262.96	0.00	
6224.00†	10.919	16.114	6133.30	-119.03	928.41	268.22	0.00	
6324.00†	10.919	16.114	6231.49	-121.36	946.61	273.47	0.00	
6424.00†	10.919	16.114	6329.68	-123.69	964.80	278.73	0.00	
6524.00†	10.919	16.114	6427.87	-126.02	983.00	283.99	0.00	
6624.00†	10.919	16.114	6526.06	-128.36	1001.20	289.25	0.00	
6724.00†	10.919	16.114	6624.25	-130.69	1019.40	294.50	0.00	
6778.57	10.919	16.114	6677.82	-131.96	1029.33	297.37	0.00	End of Tangent
6824.00†	10.642	351.688	6722.48	-131.24	1037.62	297.96	10.00	
6924.00†	15.618	312.062	6820.02	-117.17	1055.82	286.60	10.00	
7024.00†	23.922	295.177	6914.12	-86.33	1073.50	258.19	10.00	
7124.00†	33.140	286.953	7001.91	-39.66	1090.14	213.58	10.00	
7224.00†	42.681	282.045	7080.74	21.42	1105.22	154.13	10.00	
7324.00†	52.367	278.659	7148.20	95.05	1118.29	81.65	10.00	
7424.00†	62.127	276.063	7202.24	179.00	1128.95	-1.66	10.00	
7524.00†	71.928	273.901	7241.22	270.72	1136.87	-93.26	10.00	
7624.00†	81.750	271.970	7263.97	367.41	1141.82	-190.39	10.00	
7707.92	90.000	270.427	7270.00 ¹	450.26	1143.56	-274.00	10.00	End of 3D Arc
7724.00†	90.000	270.427	7270.00	466.16	1143.68	-290.08	0.00	
7824.00†	90.000	270.427	7270.00	565.03	1144.43	-390.07	0.00	
7924.00†	90.000	270.427	7270.00	663.90	1145.17	-490.07	0.00	
8024.00†	90.000	270.427	7270.00	762.77	1145.92	-590.07	0.00	
8124.00†	90.000	270.427	7270.00	861.65	1146.66	-690.07	0.00	
8224.00†	90.000	270.427	7270.00	960.52	1147.41	-790.06	0.00	
8324.00†	90.000	270.427	7270.00	1059.39	1148.15	-890.06	0.00	
8424.00†	90.000	270.427	7270.00	1158.26	1148.90	-990.06	0.00	



Planned Wellpath Report

LAUNER 4 (REV-B.0) PWP

Page 5 of 8



REFERENCE WELLPATH IDENTIFICATION			
Operator	EXTRACTION OIL & GAS	Slot	SLOT#16 LAUNER 4(838'FSL & 317'FEL,SEC.26)
Area	COLORADO	Well	LAUNER 4
Field	WELD COUNTY (NAD83/TRUE NORTH)	Wellbore	LAUNER 4 PWB
Facility	SEC.26-T07N-R67W		

WELLPATH DATA (156 stations) † = interpolated/extrapolated station								
MD [ft]	Inclination [°]	Azimuth [°]	TVD [ft]	Vert Sect [ft]	North [ft]	East [ft]	DLS [°/100ft]	Comments
8524.00†	90.000	270.427	7270.00	1257.14	1149.64	-1090.05	0.00	
8624.00†	90.000	270.427	7270.00	1356.01	1150.39	-1190.05	0.00	
8724.00†	90.000	270.427	7270.00	1454.88	1151.13	-1290.05	0.00	
8824.00†	90.000	270.427	7270.00	1553.75	1151.87	-1390.05	0.00	
8924.00†	90.000	270.427	7270.00	1652.63	1152.62	-1490.04	0.00	
9024.00†	90.000	270.427	7270.00	1751.50	1153.36	-1590.04	0.00	
9124.00†	90.000	270.427	7270.00	1850.37	1154.11	-1690.04	0.00	
9224.00†	90.000	270.427	7270.00	1949.24	1154.85	-1790.04	0.00	
9324.00†	90.000	270.427	7270.00	2048.11	1155.60	-1890.03	0.00	
9424.00†	90.000	270.427	7270.00	2146.99	1156.34	-1990.03	0.00	
9524.00†	90.000	270.427	7270.00	2245.86	1157.09	-2090.03	0.00	
9624.00†	90.000	270.427	7270.00	2344.73	1157.83	-2190.02	0.00	
9724.00†	90.000	270.427	7270.00	2443.60	1158.58	-2290.02	0.00	
9824.00†	90.000	270.427	7270.00	2542.48	1159.32	-2390.02	0.00	
9924.00†	90.000	270.427	7270.00	2641.35	1160.07	-2490.02	0.00	
10024.00†	90.000	270.427	7270.00	2740.22	1160.81	-2590.01	0.00	
10124.00†	90.000	270.427	7270.00	2839.09	1161.55	-2690.01	0.00	
10224.00†	90.000	270.427	7270.00	2937.97	1162.30	-2790.01	0.00	
10324.00†	90.000	270.427	7270.00	3036.84	1163.04	-2890.01	0.00	
10424.00†	90.000	270.427	7270.00	3135.71	1163.79	-2990.00	0.00	
10524.00†	90.000	270.427	7270.00	3234.58	1164.53	-3090.00	0.00	
10624.00†	90.000	270.427	7270.00	3333.46	1165.28	-3190.00	0.00	
10724.00†	90.000	270.427	7270.00	3432.33	1166.02	-3289.99	0.00	
10824.00†	90.000	270.427	7270.00	3531.20	1166.77	-3389.99	0.00	
10924.00†	90.000	270.427	7270.00	3630.07	1167.51	-3489.99	0.00	
11024.00†	90.000	270.427	7270.00	3728.95	1168.26	-3589.99	0.00	
11124.00†	90.000	270.427	7270.00	3827.82	1169.00	-3689.98	0.00	
11224.00†	90.000	270.427	7270.00	3926.69	1169.75	-3789.98	0.00	
11324.00†	90.000	270.427	7270.00	4025.56	1170.49	-3889.98	0.00	
11424.00†	90.000	270.427	7270.00	4124.43	1171.23	-3989.97	0.00	



Planned Wellpath Report

LAUNER 4 (REV-B.0) PWP

Page 6 of 8



REFERENCE WELLPATH IDENTIFICATION

Operator	EXTRACTION OIL & GAS	Slot	SLOT#16 LAUNER 4(838'FSL & 317'FEL,SEC.26)
Area	COLORADO	Well	LAUNER 4
Field	WELD COUNTY (NAD83/TRUE NORTH)	Wellbore	LAUNER 4 PWB
Facility	SEC.26-T07N-R67W		

WELLPATH DATA (156 stations) † = interpolated/extrapolated station

MD [ft]	Inclination [°]	Azimuth [°]	TVD [ft]	Vert Sect [ft]	North [ft]	East [ft]	DLS [°/100ft]	Comments
11524.00†	90.000	270.427	7270.00	4223.31	1171.98	-4089.97	0.00	
11624.00†	90.000	270.427	7270.00	4322.18	1172.72	-4189.97	0.00	
11724.00†	90.000	270.427	7270.00	4421.05	1173.47	-4289.97	0.00	
11824.00†	90.000	270.427	7270.00	4519.92	1174.21	-4389.96	0.00	
11924.00†	90.000	270.427	7270.00	4618.80	1174.96	-4489.96	0.00	
12024.00†	90.000	270.427	7270.00	4717.67	1175.70	-4589.96	0.00	
12124.00†	90.000	270.427	7270.00	4816.54	1176.45	-4689.96	0.00	
12224.00†	90.000	270.427	7270.00	4915.41	1177.19	-4789.95	0.00	
12324.00†	90.000	270.427	7270.00	5014.29	1177.94	-4889.95	0.00	
12424.00†	90.000	270.427	7270.00	5113.16	1178.68	-4989.95	0.00	
12524.00†	90.000	270.427	7270.00	5212.03	1179.43	-5089.94	0.00	
12624.00†	90.000	270.427	7270.00	5310.90	1180.17	-5189.94	0.00	
12724.00†	90.000	270.427	7270.00	5409.78	1180.91	-5289.94	0.00	
12824.00†	90.000	270.427	7270.00	5508.65	1181.66	-5389.94	0.00	
12924.00†	90.000	270.427	7270.00	5607.52	1182.40	-5489.93	0.00	
13024.00†	90.000	270.427	7270.00	5706.39	1183.15	-5589.93	0.00	
13124.00†	90.000	270.427	7270.00	5805.27	1183.89	-5689.93	0.00	
13224.00†	90.000	270.427	7270.00	5904.14	1184.64	-5789.92	0.00	
13324.00†	90.000	270.427	7270.00	6003.01	1185.38	-5889.92	0.00	
13424.00†	90.000	270.427	7270.00	6101.88	1186.13	-5989.92	0.00	
13524.00†	90.000	270.427	7270.00	6200.76	1186.87	-6089.92	0.00	
13624.00†	90.000	270.427	7270.00	6299.63	1187.62	-6189.91	0.00	
13724.00†	90.000	270.427	7270.00	6398.50	1188.36	-6289.91	0.00	
13824.00†	90.000	270.427	7270.00	6497.37	1189.11	-6389.91	0.00	
13924.00†	90.000	270.427	7270.00	6596.24	1189.85	-6489.91	0.00	
14024.00†	90.000	270.427	7270.00	6695.12	1190.59	-6589.90	0.00	
14124.00†	90.000	270.427	7270.00	6793.99	1191.34	-6689.90	0.00	
14224.00†	90.000	270.427	7270.00	6892.86	1192.08	-6789.90	0.00	
14324.00†	90.000	270.427	7270.00	6991.73	1192.83	-6889.89	0.00	
14424.00†	90.000	270.427	7270.00	7090.61	1193.57	-6989.89	0.00	



Planned Wellpath Report

LAUNER 4 (REV-B.0) PWP

Page 7 of 8



REFERENCE WELLPATH IDENTIFICATION

Operator	EXTRACTION OIL & GAS	Slot	SLOT#16 LAUNER 4(838'FSL & 317'FEL,SEC.26)
Area	COLORADO	Well	LAUNER 4
Field	WELD COUNTY (NAD83/TRUE NORTH)	Wellbore	LAUNER 4 PWB
Facility	SEC.26-T07N-R67W		

WELLPATH DATA (156 stations) † = interpolated/extrapolated station

MD [ft]	Inclination [°]	Azimuth [°]	TVD [ft]	Vert Sect [ft]	North [ft]	East [ft]	DLS [°/100ft]	Comments
14524.00†	90.000	270.427	7270.00	7189.48	1194.32	-7089.89	0.00	
14624.00†	90.000	270.427	7270.00	7288.35	1195.06	-7189.89	0.00	
14724.00†	90.000	270.427	7270.00	7387.22	1195.81	-7289.88	0.00	
14824.00†	90.000	270.427	7270.00	7486.10	1196.55	-7389.88	0.00	
14924.00†	90.000	270.427	7270.00	7584.97	1197.30	-7489.88	0.00	
14962.13	90.000	270.427	7270.00 ²	7622.67	1197.58	-7528.01	0.00	End of Tangent

HOLE & CASING SECTIONS - Ref Wellbore: LAUNER 4 PWB Ref Wellpath: LAUNER 4 (REV-B.0) PWP

String/Diameter	Start MD [ft]	End MD [ft]	Interval [ft]	Start TVD [ft]	End TVD [ft]	Start N/S [ft]	Start E/W [ft]	End N/S [ft]	End E/W [ft]
7in Casing Intermediate	24.00	7707.92	7683.92	24.00	7270.00	0.00	0.00	1143.56	-274.00



Planned Wellpath Report

LAUNER 4 (REV-B.0) PWP

Page 8 of 8



REFERENCE WELLPATH IDENTIFICATION

Operator	EXTRACTION OIL & GAS	Slot	SLOT#16 LAUNER 4(838'FSL & 317'FEL,SEC.26)
Area	COLORADO	Well	LAUNER 4
Field	WELD COUNTY (NAD83/TRUE NORTH)	Wellbore	LAUNER 4 PWB
Facility	SEC.26-T07N-R67W		

TARGETS

Name	MD [ft]	TVD [ft]	North [ft]	East [ft]	Grid East [US ft]	Grid North [US ft]	Latitude	Longitude	Shape
SEC.26-T07N-R67W		-17.00	3955.07	-184.52	3179860.07	1444245.18	40°33'03.784"N	104°51'09.932"W	polygon
SEC.27-T07N-R67W		-17.00	3955.07	-184.52	3179860.07	1444245.18	40°33'03.784"N	104°51'09.932"W	polygon
2) LAUNER 4 BHL ON PLAT REV-1(2044'FSL & 2561'FEL,SEC.27)	14962.13	7270.00	1197.58	-7528.01	3172537.17	1441434.19	40°32'36.524"N	104°52'45.052"W	point
LAUNER 4 DRILLING CORRIDOR(60')		7270.00	0.00	0.00	3180073.48	1440291.69	40°32'24.702"N	104°51'07.542"W	polygon
LAUNER 4 LANDING		7270.00	1143.60	-142.58	3179922.56	1441434.18	40°32'36.002"N	104°51'09.389"W	point
1) LAUNER 4 LANDING REV-1	7707.92	7270.00	1143.56	-274.00	3179791.14	1441433.18	40°32'36.002"N	104°51'11.091"W	point

SURVEY PROGRAM - Ref Wellbore: LAUNER 4 PWB Ref Wellpath: LAUNER 4 (REV-B.0) PWP

Start MD [ft]	End MD [ft]	Positional Uncertainty Model	Log Name/Comment	Wellbore
24.00	16000.00	NaviTrak (Standard)		LAUNER 4 PWB