

EXTRACTION OIL & GAS

Location: COLORADO Slot: SLOT#15 LAUNER 3(861'FSL & 301'FEL,SEC.26)
Field: WELD COUNTY (NAD83/TRUE NORTH) Well: LAUNER 3
Facility: SEC.26-T07N-R67W Wellbore: LAUNER 3 PWB

Plot reference wellpath is LAUNER 3 (REV-B.0) PWP

True vertical depths are referenced to RIG (RKB)	Grid System: NAD83 / Lambert Colorado SP, Northern Zone (501), US feet
Measured depths are referenced to RIG (RKB)	North Reference: True north
RIG (RKB) to Mean Sea Level: 4955 feet	Scale: True distance
Mean Sea Level to Mud line (At Slot: SLOT#15 LAUNER 3(861'FSL & 301'FEL,SEC.26)): 0 feet	Depths are in feet
Coordinates are in feet referenced to Slot	Created by: painsett on 10/7/2014

Location Information

Facility Name				Grid East (US ft)	Grid North (US ft)	Latitude	Longitude
SEC.26-T07N-R67W				3179860.101	1444245.219	40°33'03.784"N	104°51'09.932"W
Slot	Local N (ft)	Local E (ft)	Grid East (US ft)	Grid North (US ft)	Latitude	Longitude	
SLOT#15 LAUNER 3(861'FSL & 301'FEL,SEC.26)	-3932.16	200.37	3180089.155	1440314.752	40°32'24.929"N	104°51'07.337"W	
RIG (RKB) to Mud line (At Slot: SLOT#15 LAUNER 3(861'FSL & 301'FEL,SEC.26))						4955ft	
Mean Sea Level to Mud line (At Slot: SLOT#15 LAUNER 3(861'FSL & 301'FEL,SEC.26))						0ft	
RIG (RKB) to Mean Sea Level						4955ft	

Targets

Name	MD (ft)	TVD (ft)	Local N (ft)	Local E (ft)	Grid East (US ft)	Grid North (US ft)	Latitude	Longitude
SEC.26-T07N-R67W		-17.00	3932.12	-200.37	3179860.07	1444245.18	40°33'03.784"N	104°51'09.932"W
SEC.27-T07N-R67W		-17.00	3932.12	-200.37	3179860.07	1444245.18	40°33'03.784"N	104°51'09.932"W
LAUNER 3 BHL ON PLAT REV-1(2204'FSL & 2561'FEL,SEC.27)	14757.73	7035.00	1334.57	-7543.52	3172536.32	1441594.12	40°32'38.105"N	104°52'45.048"W
LAUNER 3 DRILLING CORRIDOR(60')		7035.00	0.00	0.00	3180089.15	1440314.75	40°32'24.929"N	104°51'07.337"W
LAUNER 3 LANDING		7035.00	1280.59	-158.14	3179921.67	1441594.11	40°32'37.583"N	104°51'09.385"W
LAUNER 3 LANDING REV-1	7504.01	7035.00	1280.61	-290.00	3179789.81	1441593.17	40°32'37.583"N	104°51'11.083"W

Survey Program

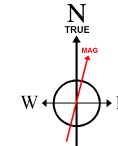
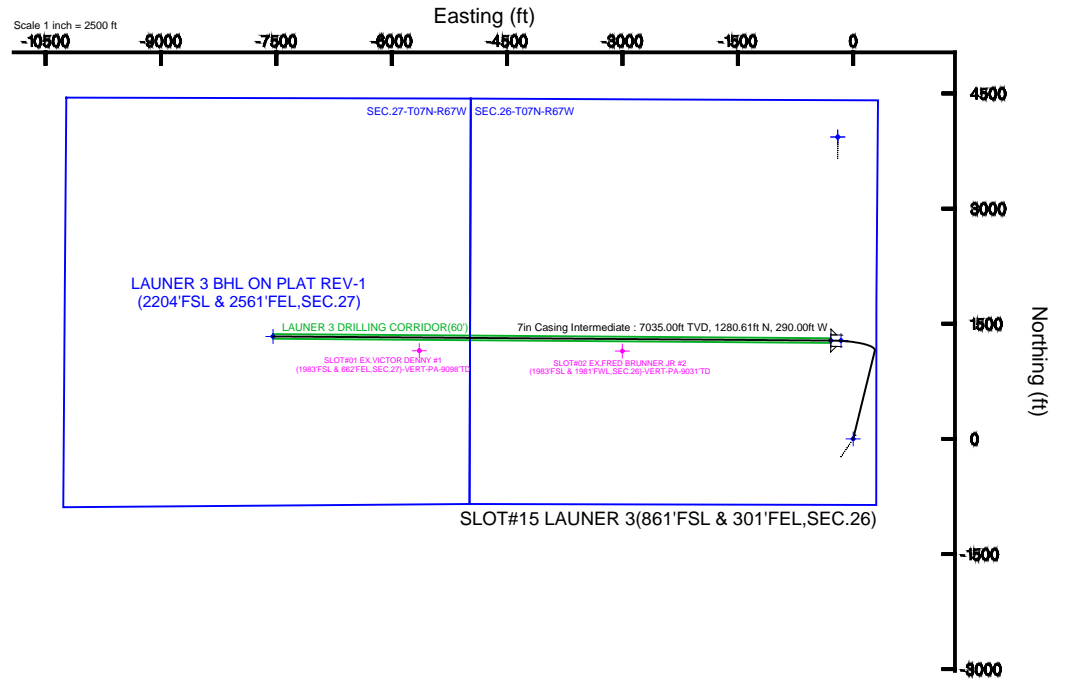
Start MD (ft)	End MD (ft)	Tool	Model	Log Name/Comment	Wellbore
24.00	15000.00	NaviTrak	NaviTrak (Standard)		LAUNER 3 PWB

Well Profile Data

Design Comment	MD (ft)	Inc (°)	Az (°)	TVD (ft)	Local N (ft)	Local E (ft)	DLS (°/100ft)	VS (ft)
Tie On	24.00	0.000	13.763	24.00	0.00	0.00	0.00	0.00
End of Tangent	850.00	0.000	13.763	850.00	0.00	0.00	0.00	0.00
End of Build	1481.00	12.620	13.763	1475.91	67.22	16.47	2.00	-4.50
End of Tangent	6575.12	12.620	13.763	6446.96	1148.25	281.26	0.00	-76.92
End of 3D Arc	7504.01	90.000	270.426	7035.00	1280.61	-290.00	10.00	508.66
End of Tangent	14757.73	90.000	270.426	7035.00	1334.57	-7543.52	0.00	7660.67

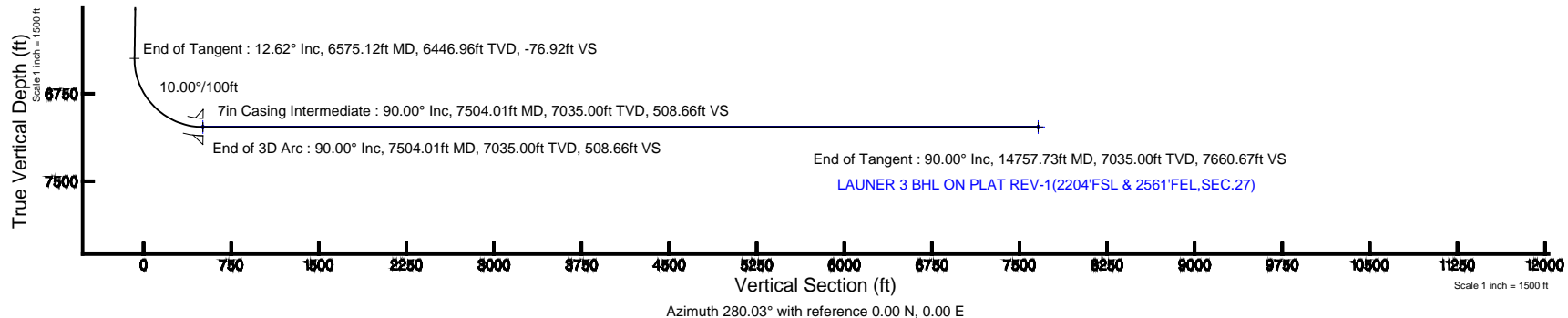


Scale 1 inch = 2500 ft



BGGM (1945.0 to 2016.0) Dip: 67.04° Field: 52816.5 nT
Magnetic North is 8.59 degrees East of True North (at 7/24/2014)

To correct azimuth from Magnetic to True add 8.59 degrees





Planned Wellpath Report

LAUNER 3 (REV-B.0) PWP

Page 1 of 8



REFERENCE WELLPATH IDENTIFICATION

Operator	EXTRACTION OIL & GAS	Slot	SLOT#15 LAUNER 3(861'FSL & 301'FEL,SEC.26)
Area	COLORADO	Well	LAUNER 3
Field	WELD COUNTY (NAD83/TRUE NORTH)	Wellbore	LAUNER 3 PWB
Facility	SEC.26-T07N-R67W		

REPORT SETUP INFORMATION

Projection System	NAD83 / Lambert Colorado SP, Northern Zone (501), US feet	Software System	WellArchitect® 4.0.0
North Reference	True	User	Painsetr
Scale	0.99997	Report Generated	10/7/2014 at 10:38:56 AM
Convergence at slot	n/a	Database/Source file	WA_Denver/LAUNER_3_PWB.xml

WELLPATH LOCATION

	Local coordinates		Grid coordinates		Geographic coordinates	
	North[ft]	East[ft]	Easting[US ft]	Northing[US ft]	Latitude	Longitude
Slot Location	-3932.16	200.37	3180089.16	1440314.75	40°32'24.929"N	104°51'07.337"W
Facility Reference Pt			3179860.10	1444245.22	40°33'03.784"N	104°51'09.932"W
Field Reference Pt			3185481.27	1419166.81	40°28'55.560"N	104°49'59.556"W

WELLPATH DATUM

Calculation method	Minimum curvature	RIG (RKB) to Facility Vertical Datum	4955.00ft
Horizontal Reference Pt	Slot	RIG (RKB) to Mean Sea Level	4955.00ft
Vertical Reference Pt	RIG (RKB)	RIG (RKB) to Mud Line at Slot (SLOT#15 LAUNER 3(861'FSL & 301'FEL,SEC.26))	4955.00ft
MD Reference Pt	RIG (RKB)	Section Origin	N 0.00, E 0.00 ft
Field Vertical Reference	Mean Sea Level	Section Azimuth	280.03°



Planned Wellpath Report

LAUNER 3 (REV-B.0) PWP

Page 2 of 8



REFERENCE WELLPATH IDENTIFICATION

Operator	EXTRACTION OIL & GAS	Slot	SLOT#15 LAUNER 3(861'FSL & 301'FEL,SEC.26)
Area	COLORADO	Well	LAUNER 3
Field	WELD COUNTY (NAD83/TRUE NORTH)	Wellbore	LAUNER 3 PWB
Facility	SEC.26-T07N-R67W		

WELLPATH DATA (154 stations) † = interpolated/extrapolated station

MD [ft]	Inclination [°]	Azimuth [°]	TVD [ft]	Vert Sect [ft]	North [ft]	East [ft]	DLS [°/100ft]	Comments
0.00†	0.000	13.763	0.00	0.00	0.00	0.00	0.00	
24.00	0.000	13.763	24.00	0.00	0.00	0.00	0.00	Tie On
124.00†	0.000	13.763	124.00	0.00	0.00	0.00	0.00	
224.00†	0.000	13.763	224.00	0.00	0.00	0.00	0.00	
324.00†	0.000	13.763	324.00	0.00	0.00	0.00	0.00	
424.00†	0.000	13.763	424.00	0.00	0.00	0.00	0.00	
524.00†	0.000	13.763	524.00	0.00	0.00	0.00	0.00	
624.00†	0.000	13.763	624.00	0.00	0.00	0.00	0.00	
724.00†	0.000	13.763	724.00	0.00	0.00	0.00	0.00	
824.00†	0.000	13.763	824.00	0.00	0.00	0.00	0.00	
850.00	0.000	13.763	850.00	0.00	0.00	0.00	0.00	End of Tangent
924.00†	1.480	13.763	923.99	-0.06	0.93	0.23	2.00	
1024.00†	3.480	13.763	1023.89	-0.34	5.13	1.26	2.00	
1124.00†	5.480	13.763	1123.58	-0.85	12.72	3.12	2.00	
1224.00†	7.480	13.763	1222.94	-1.59	23.68	5.80	2.00	
1324.00†	9.480	13.763	1321.84	-2.55	38.00	9.31	2.00	
1424.00†	11.480	13.763	1420.17	-3.73	55.67	13.64	2.00	
1481.00	12.620	13.763	1475.91	-4.50	67.22	16.47	2.00	End of Build
1524.00†	12.620	13.763	1517.87	-5.11	76.35	18.70	0.00	
1624.00†	12.620	13.763	1615.46	-6.54	97.57	23.90	0.00	
1724.00†	12.620	13.763	1713.04	-7.96	118.79	29.10	0.00	
1824.00†	12.620	13.763	1810.62	-9.38	140.01	34.30	0.00	
1924.00†	12.620	13.763	1908.21	-10.80	161.23	39.49	0.00	
2024.00†	12.620	13.763	2005.79	-12.22	182.45	44.69	0.00	
2124.00†	12.620	13.763	2103.38	-13.64	203.68	49.89	0.00	
2224.00†	12.620	13.763	2200.96	-15.07	224.90	55.09	0.00	
2324.00†	12.620	13.763	2298.54	-16.49	246.12	60.29	0.00	
2424.00†	12.620	13.763	2396.13	-17.91	267.34	65.48	0.00	
2524.00†	12.620	13.763	2493.71	-19.33	288.56	70.68	0.00	
2624.00†	12.620	13.763	2591.30	-20.75	309.78	75.88	0.00	



Planned Wellpath Report

LAUNER 3 (REV-B.0) PWP

Page 3 of 8



REFERENCE WELLPATH IDENTIFICATION

Operator	EXTRACTION OIL & GAS	Slot	SLOT#15 LAUNER 3(861'FSL & 301'FEL,SEC.26)
Area	COLORADO	Well	LAUNER 3
Field	WELD COUNTY (NAD83/TRUE NORTH)	Wellbore	LAUNER 3 PWB
Facility	SEC.26-T07N-R67W		

WELLPATH DATA (154 stations) † = interpolated/extrapolated station

MD [ft]	Inclination [°]	Azimuth [°]	TVD [ft]	Vert Sect [ft]	North [ft]	East [ft]	DLS [°/100ft]	Comments
2724.00†	12.620	13.763	2688.88	-22.17	331.00	81.08	0.00	
2824.00†	12.620	13.763	2786.46	-23.60	352.22	86.28	0.00	
2924.00†	12.620	13.763	2884.05	-25.02	373.44	91.47	0.00	
3024.00†	12.620	13.763	2981.63	-26.44	394.66	96.67	0.00	
3124.00†	12.620	13.763	3079.22	-27.86	415.89	101.87	0.00	
3224.00†	12.620	13.763	3176.80	-29.28	437.11	107.07	0.00	
3324.00†	12.620	13.763	3274.38	-30.70	458.33	112.27	0.00	
3424.00†	12.620	13.763	3371.97	-32.13	479.55	117.46	0.00	
3524.00†	12.620	13.763	3469.55	-33.55	500.77	122.66	0.00	
3624.00†	12.620	13.763	3567.14	-34.97	521.99	127.86	0.00	
3724.00†	12.620	13.763	3664.72	-36.39	543.21	133.06	0.00	
3824.00†	12.620	13.763	3762.30	-37.81	564.43	138.26	0.00	
3924.00†	12.620	13.763	3859.89	-39.23	585.65	143.45	0.00	
4024.00†	12.620	13.763	3957.47	-40.66	606.88	148.65	0.00	
4124.00†	12.620	13.763	4055.06	-42.08	628.10	153.85	0.00	
4224.00†	12.620	13.763	4152.64	-43.50	649.32	159.05	0.00	
4324.00†	12.620	13.763	4250.22	-44.92	670.54	164.25	0.00	
4424.00†	12.620	13.763	4347.81	-46.34	691.76	169.44	0.00	
4524.00†	12.620	13.763	4445.39	-47.76	712.98	174.64	0.00	
4624.00†	12.620	13.763	4542.98	-49.19	734.20	179.84	0.00	
4724.00†	12.620	13.763	4640.56	-50.61	755.42	185.04	0.00	
4824.00†	12.620	13.763	4738.15	-52.03	776.64	190.24	0.00	
4924.00†	12.620	13.763	4835.73	-53.45	797.86	195.43	0.00	
5024.00†	12.620	13.763	4933.31	-54.87	819.09	200.63	0.00	
5124.00†	12.620	13.763	5030.90	-56.29	840.31	205.83	0.00	
5224.00†	12.620	13.763	5128.48	-57.71	861.53	211.03	0.00	
5324.00†	12.620	13.763	5226.07	-59.14	882.75	216.23	0.00	
5424.00†	12.620	13.763	5323.65	-60.56	903.97	221.43	0.00	
5524.00†	12.620	13.763	5421.23	-61.98	925.19	226.62	0.00	
5624.00†	12.620	13.763	5518.82	-63.40	946.41	231.82	0.00	



Planned Wellpath Report

LAUNER 3 (REV-B.0) PWP

Page 4 of 8



REFERENCE WELLPATH IDENTIFICATION			
Operator	EXTRACTION OIL & GAS	Slot	SLOT#15 LAUNER 3(861'FSL & 301'FEL,SEC.26)
Area	COLORADO	Well	LAUNER 3
Field	WELD COUNTY (NAD83/TRUE NORTH)	Wellbore	LAUNER 3 PWB
Facility	SEC.26-T07N-R67W		

WELLPATH DATA (154 stations) † = interpolated/extrapolated station								
MD [ft]	Inclination [°]	Azimuth [°]	TVD [ft]	Vert Sect [ft]	North [ft]	East [ft]	DLS [°/100ft]	Comments
5724.00†	12.620	13.763	5616.40	-64.82	967.63	237.02	0.00	
5824.00†	12.620	13.763	5713.99	-66.24	988.85	242.22	0.00	
5924.00†	12.620	13.763	5811.57	-67.67	1010.07	247.42	0.00	
6024.00†	12.620	13.763	5909.15	-69.09	1031.30	252.61	0.00	
6124.00†	12.620	13.763	6006.74	-70.51	1052.52	257.81	0.00	
6224.00†	12.620	13.763	6104.32	-71.93	1073.74	263.01	0.00	
6324.00†	12.620	13.763	6201.91	-73.35	1094.96	268.21	0.00	
6424.00†	12.620	13.763	6299.49	-74.77	1116.18	273.41	0.00	
6524.00†	12.620	13.763	6397.07	-76.20	1137.40	278.60	0.00	
6575.12	12.620	13.763	6446.96	-76.92	1148.25	281.26	0.00	End of Tangent
6624.00†	12.449	351.113	6494.70	-75.56	1158.65	281.72	10.00	
6724.00†	17.112	315.469	6591.56	-60.04	1179.84	269.70	10.00	
6824.00†	25.050	298.210	6684.88	-27.86	1200.38	240.66	10.00	
6924.00†	34.043	289.238	6771.83	20.01	1219.66	195.46	10.00	
7024.00†	43.438	283.727	6849.76	82.10	1237.09	135.48	10.00	
7124.00†	53.018	279.869	6916.32	156.54	1252.13	62.55	10.00	
7224.00†	62.695	276.884	6969.47	241.06	1264.33	-21.12	10.00	
7324.00†	72.425	274.383	7007.60	333.09	1273.32	-112.99	10.00	
7424.00†	82.184	272.140	7029.55	429.83	1278.83	-210.26	10.00	
7504.01	90.000	270.426	7035.00 ¹	508.66	1280.61	-290.00	10.00	End of 3D Arc
7524.00†	90.000	270.426	7035.00	528.37	1280.76	-309.99	0.00	
7624.00†	90.000	270.426	7035.00	626.97	1281.50	-409.99	0.00	
7724.00†	90.000	270.426	7035.00	725.57	1282.25	-509.99	0.00	
7824.00†	90.000	270.426	7035.00	824.17	1282.99	-609.98	0.00	
7924.00†	90.000	270.426	7035.00	922.76	1283.73	-709.98	0.00	
8024.00†	90.000	270.426	7035.00	1021.36	1284.48	-809.98	0.00	
8124.00†	90.000	270.426	7035.00	1119.96	1285.22	-909.97	0.00	
8224.00†	90.000	270.426	7035.00	1218.56	1285.97	-1009.97	0.00	
8324.00†	90.000	270.426	7035.00	1317.15	1286.71	-1109.97	0.00	
8424.00†	90.000	270.426	7035.00	1415.75	1287.45	-1209.97	0.00	



Planned Wellpath Report

LAUNER 3 (REV-B.0) PWP

Page 5 of 8



REFERENCE WELLPATH IDENTIFICATION			
Operator	EXTRACTION OIL & GAS	Slot	SLOT#15 LAUNER 3(861'FSL & 301'FEL,SEC.26)
Area	COLORADO	Well	LAUNER 3
Field	WELD COUNTY (NAD83/TRUE NORTH)	Wellbore	LAUNER 3 PWB
Facility	SEC.26-T07N-R67W		

WELLPATH DATA (154 stations) † = interpolated/extrapolated station								
MD [ft]	Inclination [°]	Azimuth [°]	TVD [ft]	Vert Sect [ft]	North [ft]	East [ft]	DLS [°/100ft]	Comments
8524.00†	90.000	270.426	7035.00	1514.35	1288.20	-1309.96	0.00	
8624.00†	90.000	270.426	7035.00	1612.95	1288.94	-1409.96	0.00	
8724.00†	90.000	270.426	7035.00	1711.55	1289.69	-1509.96	0.00	
8824.00†	90.000	270.426	7035.00	1810.14	1290.43	-1609.96	0.00	
8924.00†	90.000	270.426	7035.00	1908.74	1291.17	-1709.95	0.00	
9024.00†	90.000	270.426	7035.00	2007.34	1291.92	-1809.95	0.00	
9124.00†	90.000	270.426	7035.00	2105.94	1292.66	-1909.95	0.00	
9224.00†	90.000	270.426	7035.00	2204.53	1293.40	-2009.94	0.00	
9324.00†	90.000	270.426	7035.00	2303.13	1294.15	-2109.94	0.00	
9424.00†	90.000	270.426	7035.00	2401.73	1294.89	-2209.94	0.00	
9524.00†	90.000	270.426	7035.00	2500.33	1295.64	-2309.94	0.00	
9624.00†	90.000	270.426	7035.00	2598.92	1296.38	-2409.93	0.00	
9724.00†	90.000	270.426	7035.00	2697.52	1297.12	-2509.93	0.00	
9824.00†	90.000	270.426	7035.00	2796.12	1297.87	-2609.93	0.00	
9924.00†	90.000	270.426	7035.00	2894.72	1298.61	-2709.93	0.00	
10024.00†	90.000	270.426	7035.00	2993.32	1299.36	-2809.92	0.00	
10124.00†	90.000	270.426	7035.00	3091.91	1300.10	-2909.92	0.00	
10224.00†	90.000	270.426	7035.00	3190.51	1300.84	-3009.92	0.00	
10324.00†	90.000	270.426	7035.00	3289.11	1301.59	-3109.91	0.00	
10424.00†	90.000	270.426	7035.00	3387.71	1302.33	-3209.91	0.00	
10524.00†	90.000	270.426	7035.00	3486.30	1303.08	-3309.91	0.00	
10624.00†	90.000	270.426	7035.00	3584.90	1303.82	-3409.91	0.00	
10724.00†	90.000	270.426	7035.00	3683.50	1304.56	-3509.90	0.00	
10824.00†	90.000	270.426	7035.00	3782.10	1305.31	-3609.90	0.00	
10924.00†	90.000	270.426	7035.00	3880.70	1306.05	-3709.90	0.00	
11024.00†	90.000	270.426	7035.00	3979.29	1306.79	-3809.89	0.00	
11124.00†	90.000	270.426	7035.00	4077.89	1307.54	-3909.89	0.00	
11224.00†	90.000	270.426	7035.00	4176.49	1308.28	-4009.89	0.00	
11324.00†	90.000	270.426	7035.00	4275.09	1309.03	-4109.89	0.00	
11424.00†	90.000	270.426	7035.00	4373.68	1309.77	-4209.88	0.00	



Planned Wellpath Report

LAUNER 3 (REV-B.0) PWP

Page 6 of 8



REFERENCE WELLPATH IDENTIFICATION

Operator	EXTRACTION OIL & GAS	Slot	SLOT#15 LAUNER 3(861'FSL & 301'FEL,SEC.26)
Area	COLORADO	Well	LAUNER 3
Field	WELD COUNTY (NAD83/TRUE NORTH)	Wellbore	LAUNER 3 PWB
Facility	SEC.26-T07N-R67W		

WELLPATH DATA (154 stations) † = interpolated/extrapolated station

MD [ft]	Inclination [°]	Azimuth [°]	TVD [ft]	Vert Sect [ft]	North [ft]	East [ft]	DLS [°/100ft]	Comments
11524.00†	90.000	270.426	7035.00	4472.28	1310.51	-4309.88	0.00	
11624.00†	90.000	270.426	7035.00	4570.88	1311.26	-4409.88	0.00	
11724.00†	90.000	270.426	7035.00	4669.48	1312.00	-4509.88	0.00	
11824.00†	90.000	270.426	7035.00	4768.07	1312.75	-4609.87	0.00	
11924.00†	90.000	270.426	7035.00	4866.67	1313.49	-4709.87	0.00	
12024.00†	90.000	270.426	7035.00	4965.27	1314.23	-4809.87	0.00	
12124.00†	90.000	270.426	7035.00	5063.87	1314.98	-4909.86	0.00	
12224.00†	90.000	270.426	7035.00	5162.47	1315.72	-5009.86	0.00	
12324.00†	90.000	270.426	7035.00	5261.06	1316.47	-5109.86	0.00	
12424.00†	90.000	270.426	7035.00	5359.66	1317.21	-5209.86	0.00	
12524.00†	90.000	270.426	7035.00	5458.26	1317.95	-5309.85	0.00	
12624.00†	90.000	270.426	7035.00	5556.86	1318.70	-5409.85	0.00	
12724.00†	90.000	270.426	7035.00	5655.45	1319.44	-5509.85	0.00	
12824.00†	90.000	270.426	7035.00	5754.05	1320.18	-5609.84	0.00	
12924.00†	90.000	270.426	7035.00	5852.65	1320.93	-5709.84	0.00	
13024.00†	90.000	270.426	7035.00	5951.25	1321.67	-5809.84	0.00	
13124.00†	90.000	270.426	7035.00	6049.84	1322.42	-5909.84	0.00	
13224.00†	90.000	270.426	7035.00	6148.44	1323.16	-6009.83	0.00	
13324.00†	90.000	270.426	7035.00	6247.04	1323.90	-6109.83	0.00	
13424.00†	90.000	270.426	7035.00	6345.64	1324.65	-6209.83	0.00	
13524.00†	90.000	270.426	7035.00	6444.24	1325.39	-6309.83	0.00	
13624.00†	90.000	270.426	7035.00	6542.83	1326.14	-6409.82	0.00	
13724.00†	90.000	270.426	7035.00	6641.43	1326.88	-6509.82	0.00	
13824.00†	90.000	270.426	7035.00	6740.03	1327.62	-6609.82	0.00	
13924.00†	90.000	270.426	7035.00	6838.63	1328.37	-6709.81	0.00	
14024.00†	90.000	270.426	7035.00	6937.22	1329.11	-6809.81	0.00	
14124.00†	90.000	270.426	7035.00	7035.82	1329.86	-6909.81	0.00	
14224.00†	90.000	270.426	7035.00	7134.42	1330.60	-7009.81	0.00	
14324.00†	90.000	270.426	7035.00	7233.02	1331.34	-7109.80	0.00	
14424.00†	90.000	270.426	7035.00	7331.62	1332.09	-7209.80	0.00	



Planned Wellpath Report

LAUNER 3 (REV-B.0) PWP

Page 7 of 8



REFERENCE WELLPATH IDENTIFICATION

Operator	EXTRACTION OIL & GAS	Slot	SLOT#15 LAUNER 3(861'FSL & 301'FEL,SEC.26)
Area	COLORADO	Well	LAUNER 3
Field	WELD COUNTY (NAD83/TRUE NORTH)	Wellbore	LAUNER 3 PWB
Facility	SEC.26-T07N-R67W		

WELLPATH DATA (154 stations) † = interpolated/extrapolated station

MD [ft]	Inclination [°]	Azimuth [°]	TVD [ft]	Vert Sect [ft]	North [ft]	East [ft]	DLS [°/100ft]	Comments
14524.00†	90.000	270.426	7035.00	7430.21	1332.83	-7309.80	0.00	
14624.00†	90.000	270.426	7035.00	7528.81	1333.58	-7409.80	0.00	
14724.00†	90.000	270.426	7035.00	7627.41	1334.32	-7509.79	0.00	
14757.73	90.000	270.426	7035.00 ²	7660.67	1334.57	-7543.52	0.00	End of Tangent

HOLE & CASING SECTIONS - Ref Wellbore: LAUNER 3 PWB Ref Wellpath: LAUNER 3 (REV-B.0) PWP

String/Diameter	Start MD [ft]	End MD [ft]	Interval [ft]	Start TVD [ft]	End TVD [ft]	Start N/S [ft]	Start E/W [ft]	End N/S [ft]	End E/W [ft]
7in Casing Intermediate	24.00	7504.01	7480.01	24.00	7035.00	0.00	0.00	1280.61	-290.00



Planned Wellpath Report

LAUNER 3 (REV-B.0) PWP

Page 8 of 8



REFERENCE WELLPATH IDENTIFICATION				
Operator	EXTRACTION OIL & GAS	Slot	SLOT#15 LAUNER 3(861'FSL & 301'FEL,SEC.26)	
Area	COLORADO	Well	LAUNER 3	
Field	WELD COUNTY (NAD83/TRUE NORTH)	Wellbore	LAUNER 3 PWB	
Facility	SEC.26-T07N-R67W			

TARGETS									
Name	MD [ft]	TVD [ft]	North [ft]	East [ft]	Grid East [US ft]	Grid North [US ft]	Latitude	Longitude	Shape
SEC.26-T07N-R67W		-17.00	3932.12	-200.37	3179860.07	1444245.18	40°33'03.784"N	104°51'09.932"W	polygon
SEC.27-T07N-R67W		-17.00	3932.12	-200.37	3179860.07	1444245.18	40°33'03.784"N	104°51'09.932"W	polygon
2) LAUNER 3 BHL ON PLAT REV-1(2204'FSL & 2561'FEL,SEC.27)	14757.73	7035.00	1334.57	-7543.52	3172536.32	1441594.12	40°32'38.105"N	104°52'45.048"W	point
LAUNER 3 DRILLING CORRIDOR(60')		7035.00	0.00	0.00	3180089.15	1440314.75	40°32'24.929"N	104°51'07.337"W	polygon
LAUNER 3 LANDING		7035.00	1280.59	-158.14	3179921.67	1441594.11	40°32'37.583"N	104°51'09.385"W	point
1) LAUNER 3 LANDING REV-1	7504.01	7035.00	1280.61	-290.00	3179789.81	1441593.17	40°32'37.583"N	104°51'11.093"W	point

SURVEY PROGRAM - Ref Wellbore: LAUNER 3 PWB Ref Wellpath: LAUNER 3 (REV-B.0) PWP				
Start MD [ft]	End MD [ft]	Positional Uncertainty Model	Log Name/Comment	Wellbore
24.00	15000.00	NaviTrak (Standard)		LAUNER 3 PWB