

EXTRACTION OIL & GAS

Location: COLORADO Slot: SLOT#14 LAUNER 2(884'FSL & 285'FEL,SEC.26)
Field: WELD COUNTY (NAD83/TRUE NORTH) Well: LAUNER 2
Facility: SEC.26-T07N-R67W Wellbore: LAUNER 2 PWB

Plot reference wellpath is LAUNER 2 (REV-B.0) PWP

True vertical depths are referenced to RIG (RKB)	Grid System: NAD83 / Lambert Colorado SP, Northern Zone (501), US feet
Measured depths are referenced to RIG (RKB)	North Reference: True north
RIG (RKB) to Mean Sea Level: 4955 feet	Scale: True distance
Mean Sea Level to Mud line (At Slot: SLOT#14 LAUNER 2(884'FSL & 285'FEL,SEC.26)): 0 feet	Depths are in feet
Coordinates are in feet referenced to Slot	Created by: painsett on 10/7/2014

Location Information

Facility Name			Grid East (US ft)	Grid North (US ft)	Latitude	Longitude
SEC.26-T07N-R67W			3179860.101	1444245.219	40°33'03.784"N	104°51'09.932"W
Slot	Local N (ft)	Local E (ft)	Grid East (US ft)	Grid North (US ft)	Latitude	Longitude
SLOT#14 LAUNER 2(884'FSL & 285'FEL,SEC.26)	-3908.84	216.21	3180104.826	1440338.183	40°32'25.159"N	104°51'07.132"W
RIG (RKB) to Mud line (At Slot: SLOT#14 LAUNER 2(884'FSL & 285'FEL,SEC.26))					4955ft	
Mean Sea Level to Mud line (At Slot: SLOT#14 LAUNER 2(884'FSL & 285'FEL,SEC.26))					0ft	
RIG (RKB) to Mean Sea Level					4955ft	

Targets

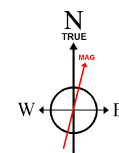
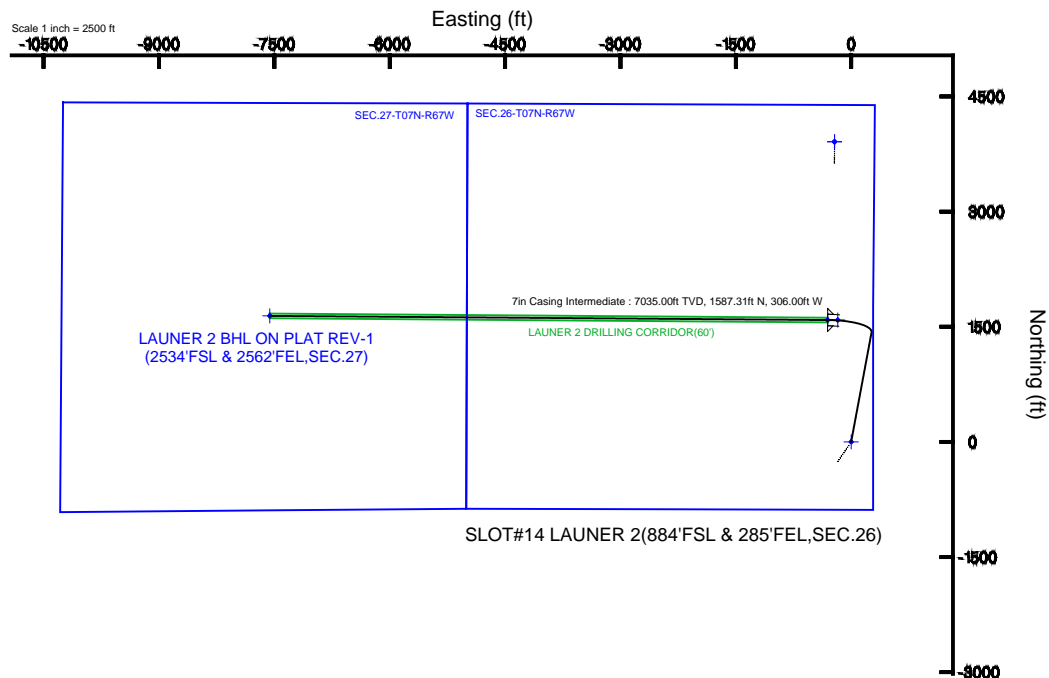
Name	MD (ft)	TVD (ft)	Local N (ft)	Local E (ft)	Grid East (US ft)	Grid North (US ft)	Latitude	Longitude
SEC.26-T07N-R67W		-17.00	3908.81	-216.21	3179860.07	1444245.18	40°33'03.784"N	104°51'09.932"W
SEC.27-T07N-R67W		-17.00	3908.81	-216.21	3179860.07	1444245.18	40°33'03.784"N	104°51'09.932"W
LAUNER 2 BHL ON PLAT REV-1(2534'FSL & 2562'FEL,SEC.27)	14829.03	7035.00	1641.33	-7558.71	3172534.57	1441924.18	40°32'41.366"N	104°52'45.041"W
LAUNER 2 DRILLING CORRIDOR(60)		7035.00	0.00	0.00	3180104.83	1440338.18	40°32'25.159"N	104°51'07.132"W
LAUNER 2 LANDING		7035.00	1587.35	-173.98	3179919.26	1441924.17	40°32'40.844"N	104°51'09.385"W
LAUNER 2 LANDING REV-1	7576.12	7035.00	1587.31	-306.00	3179787.24	1441923.16	40°32'40.844"N	104°51'11.085"W

Survey Program

Start MD (ft)	End MD (ft)	Tool	Model	Log Name/Comment	Wellbore
24.00	15000.00	NaviTrak	NaviTrak (Standard)		LAUNER 2 PWB

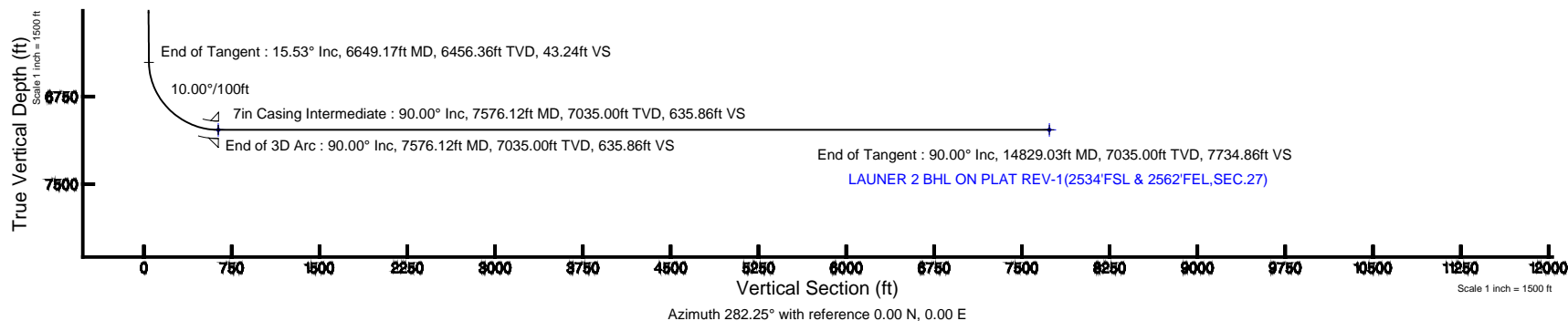
Well Profile Data

Design Comment	MD (ft)	Inc (°)	Az (°)	TVD (ft)	Local N (ft)	Local E (ft)	DLS (°/100ft)	VS (ft)
Tie On	24.00	0.000	10.541	24.00	0.00	0.00	0.00	0.00
End of Tangent	850.00	0.000	10.541	850.00	0.00	0.00	0.00	0.00
End of Build	1626.41	15.528	10.541	1616.94	102.80	19.13	2.00	3.12
End of Tangent	6649.17	15.528	10.541	6456.36	1424.77	265.13	0.00	43.24
End of 3D Arc	7576.12	90.000	270.427	7035.00	1587.31	-306.00	10.00	635.86
End of Tangent	14829.03	90.000	270.427	7035.00	1641.33	-7558.71	0.00	7734.86



BGGM (1945.0 to 2016.0) Dip: 67.04° Field: 52816.5 nT
Magnetic North is 8.59 degrees East of True North (at 7/24/2014)

To correct azimuth from Magnetic to True add 8.59 degrees





Planned Wellpath Report

LAUNER 2 (REV-B.0) PWP

Page 1 of 8



REFERENCE WELLPATH IDENTIFICATION

Operator	EXTRACTION OIL & GAS	Slot	SLOT#14 LAUNER 2(884'FSL & 285'FEL,SEC.26)
Area	COLORADO	Well	LAUNER 2
Field	WELD COUNTY (NAD83/TRUE NORTH)	Wellbore	LAUNER 2 PWB
Facility	SEC.26-T07N-R67W		

REPORT SETUP INFORMATION

Projection System	NAD83 / Lambert Colorado SP, Northern Zone (501), US feet	Software System	WellArchitect® 4.0.0
North Reference	True	User	Painsetr
Scale	0.99997	Report Generated	10/7/2014 at 10:32:52 AM
Convergence at slot	n/a	Database/Source file	WA_Denver/LAUNER_2_PWB.xml

WELLPATH LOCATION

	Local coordinates		Grid coordinates		Geographic coordinates	
	North[ft]	East[ft]	Easting[US ft]	Northing[US ft]	Latitude	Longitude
Slot Location	-3908.84	216.21	3180104.83	1440338.18	40°32'25.159"N	104°51'07.132"W
Facility Reference Pt			3179860.10	1444245.22	40°33'03.784"N	104°51'09.932"W
Field Reference Pt			3185481.27	1419166.81	40°28'55.560"N	104°49'59.556"W

WELLPATH DATUM

Calculation method	Minimum curvature	RIG (RKB) to Facility Vertical Datum	4955.00ft
Horizontal Reference Pt	Slot	RIG (RKB) to Mean Sea Level	4955.00ft
Vertical Reference Pt	RIG (RKB)	RIG (RKB) to Mud Line at Slot (SLOT#14 LAUNER 2(884'FSL & 285'FEL,SEC.26))	4955.00ft
MD Reference Pt	RIG (RKB)	Section Origin	N 0.00, E 0.00 ft
Field Vertical Reference	Mean Sea Level	Section Azimuth	282.25°



Planned Wellpath Report

LAUNER 2 (REV-B.0) PWP

Page 2 of 8



REFERENCE WELLPATH IDENTIFICATION			
Operator	EXTRACTION OIL & GAS	Slot	SLOT#14 LAUNER 2(884'FSL & 285'FEL,SEC.26)
Area	COLORADO	Well	LAUNER 2
Field	WELD COUNTY (NAD83/TRUE NORTH)	Wellbore	LAUNER 2 PWB
Facility	SEC.26-T07N-R67W		

WELLPATH DATA (155 stations) † = interpolated/extrapolated station								
MD [ft]	Inclination [°]	Azimuth [°]	TVD [ft]	Vert Sect [ft]	North [ft]	East [ft]	DLS [°/100ft]	Comments
0.00†	0.000	10.541	0.00	0.00	0.00	0.00	0.00	
24.00	0.000	10.541	24.00	0.00	0.00	0.00	0.00	Tie On
124.00†	0.000	10.541	124.00	0.00	0.00	0.00	0.00	
224.00†	0.000	10.541	224.00	0.00	0.00	0.00	0.00	
324.00†	0.000	10.541	324.00	0.00	0.00	0.00	0.00	
424.00†	0.000	10.541	424.00	0.00	0.00	0.00	0.00	
524.00†	0.000	10.541	524.00	0.00	0.00	0.00	0.00	
624.00†	0.000	10.541	624.00	0.00	0.00	0.00	0.00	
724.00†	0.000	10.541	724.00	0.00	0.00	0.00	0.00	
824.00†	0.000	10.541	824.00	0.00	0.00	0.00	0.00	
850.00	0.000	10.541	850.00	0.00	0.00	0.00	0.00	End of Tangent
924.00†	1.480	10.541	923.99	0.03	0.94	0.17	2.00	
1024.00†	3.480	10.541	1023.89	0.16	5.19	0.97	2.00	
1124.00†	5.480	10.541	1123.58	0.39	12.87	2.40	2.00	
1224.00†	7.480	10.541	1222.94	0.73	23.97	4.46	2.00	
1324.00†	9.480	10.541	1321.84	1.17	38.46	7.16	2.00	
1424.00†	11.480	10.541	1420.17	1.71	56.35	10.49	2.00	
1524.00†	13.480	10.541	1517.80	2.35	77.59	14.44	2.00	
1624.00†	15.480	10.541	1614.62	3.10	102.17	19.01	2.00	
1626.41	15.528	10.541	1616.94	3.12	102.80	19.13	2.00	End of Build
1724.00†	15.528	10.541	1710.97	3.90	128.49	23.91	0.00	
1824.00†	15.528	10.541	1807.32	4.70	154.81	28.81	0.00	
1924.00†	15.528	10.541	1903.67	5.50	181.13	33.71	0.00	
2024.00†	15.528	10.541	2000.02	6.30	207.45	38.60	0.00	
2124.00†	15.528	10.541	2096.37	7.10	233.77	43.50	0.00	
2224.00†	15.528	10.541	2192.72	7.89	260.09	48.40	0.00	
2324.00†	15.528	10.541	2289.07	8.69	286.41	53.30	0.00	
2424.00†	15.528	10.541	2385.42	9.49	312.73	58.19	0.00	
2524.00†	15.528	10.541	2481.77	10.29	339.04	63.09	0.00	
2624.00†	15.528	10.541	2578.12	11.09	365.36	67.99	0.00	



Planned Wellpath Report

LAUNER 2 (REV-B.0) PWP

Page 3 of 8



REFERENCE WELLPATH IDENTIFICATION

Operator	EXTRACTION OIL & GAS	Slot	SLOT#14 LAUNER 2(884'FSL & 285'FEL,SEC.26)
Area	COLORADO	Well	LAUNER 2
Field	WELD COUNTY (NAD83/TRUE NORTH)	Wellbore	LAUNER 2 PWB
Facility	SEC.26-T07N-R67W		

WELLPATH DATA (155 stations) † = interpolated/extrapolated station

MD [ft]	Inclination [°]	Azimuth [°]	TVD [ft]	Vert Sect [ft]	North [ft]	East [ft]	DLS [°/100ft]	Comments
2724.00†	15.528	10.541	2674.47	11.89	391.68	72.89	0.00	
2824.00†	15.528	10.541	2770.82	12.69	418.00	77.78	0.00	
2924.00†	15.528	10.541	2867.17	13.49	444.32	82.68	0.00	
3024.00†	15.528	10.541	2963.52	14.28	470.64	87.58	0.00	
3124.00†	15.528	10.541	3059.87	15.08	496.96	92.48	0.00	
3224.00†	15.528	10.541	3156.22	15.88	523.28	97.38	0.00	
3324.00†	15.528	10.541	3252.57	16.68	549.60	102.27	0.00	
3424.00†	15.528	10.541	3348.92	17.48	575.92	107.17	0.00	
3524.00†	15.528	10.541	3445.27	18.28	602.24	112.07	0.00	
3624.00†	15.528	10.541	3541.62	19.08	628.56	116.97	0.00	
3724.00†	15.528	10.541	3637.97	19.88	654.88	121.86	0.00	
3824.00†	15.528	10.541	3734.32	20.68	681.20	126.76	0.00	
3924.00†	15.528	10.541	3830.66	21.47	707.52	131.66	0.00	
4024.00†	15.528	10.541	3927.01	22.27	733.84	136.56	0.00	
4124.00†	15.528	10.541	4023.36	23.07	760.16	141.45	0.00	
4224.00†	15.528	10.541	4119.71	23.87	786.48	146.35	0.00	
4324.00†	15.528	10.541	4216.06	24.67	812.80	151.25	0.00	
4424.00†	15.528	10.541	4312.41	25.47	839.12	156.15	0.00	
4524.00†	15.528	10.541	4408.76	26.27	865.44	161.05	0.00	
4624.00†	15.528	10.541	4505.11	27.07	891.75	165.94	0.00	
4724.00†	15.528	10.541	4601.46	27.86	918.07	170.84	0.00	
4824.00†	15.528	10.541	4697.81	28.66	944.39	175.74	0.00	
4924.00†	15.528	10.541	4794.16	29.46	970.71	180.64	0.00	
5024.00†	15.528	10.541	4890.51	30.26	997.03	185.53	0.00	
5124.00†	15.528	10.541	4986.86	31.06	1023.35	190.43	0.00	
5224.00†	15.528	10.541	5083.21	31.86	1049.67	195.33	0.00	
5324.00†	15.528	10.541	5179.56	32.66	1075.99	200.23	0.00	
5424.00†	15.528	10.541	5275.91	33.46	1102.31	205.12	0.00	
5524.00†	15.528	10.541	5372.26	34.26	1128.63	210.02	0.00	
5624.00†	15.528	10.541	5468.61	35.05	1154.95	214.92	0.00	



Planned Wellpath Report

LAUNER 2 (REV-B.0) PWP

Page 4 of 8



REFERENCE WELLPATH IDENTIFICATION			
Operator	EXTRACTION OIL & GAS	Slot	SLOT#14 LAUNER 2(884'FSL & 285'FEL,SEC.26)
Area	COLORADO	Well	LAUNER 2
Field	WELD COUNTY (NAD83/TRUE NORTH)	Wellbore	LAUNER 2 PWB
Facility	SEC.26-T07N-R67W		

WELLPATH DATA (155 stations) † = interpolated/extrapolated station								
MD [ft]	Inclination [°]	Azimuth [°]	TVD [ft]	Vert Sect [ft]	North [ft]	East [ft]	DLS [°/100ft]	Comments
5724.00†	15.528	10.541	5564.96	35.85	1181.27	219.82	0.00	
5824.00†	15.528	10.541	5661.31	36.65	1207.59	224.72	0.00	
5924.00†	15.528	10.541	5757.66	37.45	1233.91	229.61	0.00	
6024.00†	15.528	10.541	5854.01	38.25	1260.23	234.51	0.00	
6124.00†	15.528	10.541	5950.36	39.05	1286.55	239.41	0.00	
6224.00†	15.528	10.541	6046.71	39.85	1312.87	244.31	0.00	
6324.00†	15.528	10.541	6143.06	40.65	1339.19	249.20	0.00	
6424.00†	15.528	10.541	6239.41	41.45	1365.51	254.10	0.00	
6524.00†	15.528	10.541	6335.76	42.24	1391.83	259.00	0.00	
6624.00†	15.528	10.541	6432.11	43.04	1418.15	263.90	0.00	
6649.17	15.528	10.541	6456.36	43.24	1424.77	265.13	0.00	End of Tangent
6724.00†	16.013	342.813	6528.48	48.62	1444.51	263.91	10.00	
6824.00†	21.154	315.411	6623.41	70.56	1470.60	247.12	10.00	
6924.00†	28.873	300.167	6714.05	108.74	1495.64	213.50	10.00	
7024.00†	37.612	291.223	6797.66	161.99	1518.88	164.05	10.00	
7124.00†	46.799	285.312	6871.68	228.70	1539.61	100.29	10.00	
7224.00†	56.209	280.975	6933.88	306.83	1557.19	24.15	10.00	
7324.00†	65.741	277.508	6982.35	394.03	1571.09	-62.05	10.00	
7424.00†	75.340	274.530	7015.64	487.63	1580.89	-155.71	10.00	
7524.00†	84.973	271.805	7032.72	584.79	1586.29	-253.96	10.00	
7576.12	90.000	270.427	7035.00 ¹	635.86	1587.31	-306.00	10.00	End of 3D Arc
7624.00†	90.000	270.427	7035.00	682.72	1587.66	-353.88	0.00	
7724.00†	90.000	270.427	7035.00	780.60	1588.41	-453.88	0.00	
7824.00†	90.000	270.427	7035.00	878.48	1589.15	-553.88	0.00	
7924.00†	90.000	270.427	7035.00	976.36	1589.90	-653.87	0.00	
8024.00†	90.000	270.427	7035.00	1074.24	1590.64	-753.87	0.00	
8124.00†	90.000	270.427	7035.00	1172.11	1591.39	-853.87	0.00	
8224.00†	90.000	270.427	7035.00	1269.99	1592.13	-953.87	0.00	
8324.00†	90.000	270.427	7035.00	1367.87	1592.88	-1053.86	0.00	
8424.00†	90.000	270.427	7035.00	1465.75	1593.62	-1153.86	0.00	



Planned Wellpath Report

LAUNER 2 (REV-B.0) PWP

Page 5 of 8



REFERENCE WELLPATH IDENTIFICATION			
Operator	EXTRACTION OIL & GAS	Slot	SLOT#14 LAUNER 2(884'FSL & 285'FEL,SEC.26)
Area	COLORADO	Well	LAUNER 2
Field	WELD COUNTY (NAD83/TRUE NORTH)	Wellbore	LAUNER 2 PWB
Facility	SEC.26-T07N-R67W		

WELLPATH DATA (155 stations) † = interpolated/extrapolated station								
MD [ft]	Inclination [°]	Azimuth [°]	TVD [ft]	Vert Sect [ft]	North [ft]	East [ft]	DLS [°/100ft]	Comments
8524.00†	90.000	270.427	7035.00	1563.63	1594.37	-1253.86	0.00	
8624.00†	90.000	270.427	7035.00	1661.50	1595.11	-1353.85	0.00	
8724.00†	90.000	270.427	7035.00	1759.38	1595.86	-1453.85	0.00	
8824.00†	90.000	270.427	7035.00	1857.26	1596.60	-1553.85	0.00	
8924.00†	90.000	270.427	7035.00	1955.14	1597.35	-1653.85	0.00	
9024.00†	90.000	270.427	7035.00	2053.02	1598.09	-1753.84	0.00	
9124.00†	90.000	270.427	7035.00	2150.89	1598.84	-1853.84	0.00	
9224.00†	90.000	270.427	7035.00	2248.77	1599.58	-1953.84	0.00	
9324.00†	90.000	270.427	7035.00	2346.65	1600.33	-2053.83	0.00	
9424.00†	90.000	270.427	7035.00	2444.53	1601.07	-2153.83	0.00	
9524.00†	90.000	270.427	7035.00	2542.41	1601.82	-2253.83	0.00	
9624.00†	90.000	270.427	7035.00	2640.28	1602.56	-2353.83	0.00	
9724.00†	90.000	270.427	7035.00	2738.16	1603.31	-2453.82	0.00	
9824.00†	90.000	270.427	7035.00	2836.04	1604.05	-2553.82	0.00	
9924.00†	90.000	270.427	7035.00	2933.92	1604.80	-2653.82	0.00	
10024.00†	90.000	270.427	7035.00	3031.80	1605.54	-2753.82	0.00	
10124.00†	90.000	270.427	7035.00	3129.67	1606.29	-2853.81	0.00	
10224.00†	90.000	270.427	7035.00	3227.55	1607.03	-2953.81	0.00	
10324.00†	90.000	270.427	7035.00	3325.43	1607.78	-3053.81	0.00	
10424.00†	90.000	270.427	7035.00	3423.31	1608.52	-3153.80	0.00	
10524.00†	90.000	270.427	7035.00	3521.19	1609.27	-3253.80	0.00	
10624.00†	90.000	270.427	7035.00	3619.06	1610.01	-3353.80	0.00	
10724.00†	90.000	270.427	7035.00	3716.94	1610.76	-3453.80	0.00	
10824.00†	90.000	270.427	7035.00	3814.82	1611.50	-3553.79	0.00	
10924.00†	90.000	270.427	7035.00	3912.70	1612.25	-3653.79	0.00	
11024.00†	90.000	270.427	7035.00	4010.58	1612.99	-3753.79	0.00	
11124.00†	90.000	270.427	7035.00	4108.45	1613.74	-3853.78	0.00	
11224.00†	90.000	270.427	7035.00	4206.33	1614.48	-3953.78	0.00	
11324.00†	90.000	270.427	7035.00	4304.21	1615.22	-4053.78	0.00	
11424.00†	90.000	270.427	7035.00	4402.09	1615.97	-4153.78	0.00	



Planned Wellpath Report

LAUNER 2 (REV-B.0) PWP

Page 6 of 8



REFERENCE WELLPATH IDENTIFICATION

Operator	EXTRACTION OIL & GAS	Slot	SLOT#14 LAUNER 2(884'FSL & 285'FEL,SEC.26)
Area	COLORADO	Well	LAUNER 2
Field	WELD COUNTY (NAD83/TRUE NORTH)	Wellbore	LAUNER 2 PWB
Facility	SEC.26-T07N-R67W		

WELLPATH DATA (155 stations) † = interpolated/extrapolated station

MD [ft]	Inclination [°]	Azimuth [°]	TVD [ft]	Vert Sect [ft]	North [ft]	East [ft]	DLS [°/100ft]	Comments
11524.00†	90.000	270.427	7035.00	4499.97	1616.71	-4253.77	0.00	
11624.00†	90.000	270.427	7035.00	4597.84	1617.46	-4353.77	0.00	
11724.00†	90.000	270.427	7035.00	4695.72	1618.20	-4453.77	0.00	
11824.00†	90.000	270.427	7035.00	4793.60	1618.95	-4553.77	0.00	
11924.00†	90.000	270.427	7035.00	4891.48	1619.69	-4653.76	0.00	
12024.00†	90.000	270.427	7035.00	4989.36	1620.44	-4753.76	0.00	
12124.00†	90.000	270.427	7035.00	5087.23	1621.18	-4853.76	0.00	
12224.00†	90.000	270.427	7035.00	5185.11	1621.93	-4953.75	0.00	
12324.00†	90.000	270.427	7035.00	5282.99	1622.67	-5053.75	0.00	
12424.00†	90.000	270.427	7035.00	5380.87	1623.42	-5153.75	0.00	
12524.00†	90.000	270.427	7035.00	5478.75	1624.16	-5253.75	0.00	
12624.00†	90.000	270.427	7035.00	5576.62	1624.91	-5353.74	0.00	
12724.00†	90.000	270.427	7035.00	5674.50	1625.65	-5453.74	0.00	
12824.00†	90.000	270.427	7035.00	5772.38	1626.40	-5553.74	0.00	
12924.00†	90.000	270.427	7035.00	5870.26	1627.14	-5653.73	0.00	
13024.00†	90.000	270.427	7035.00	5968.14	1627.89	-5753.73	0.00	
13124.00†	90.000	270.427	7035.00	6066.01	1628.63	-5853.73	0.00	
13224.00†	90.000	270.427	7035.00	6163.89	1629.38	-5953.73	0.00	
13324.00†	90.000	270.427	7035.00	6261.77	1630.12	-6053.72	0.00	
13424.00†	90.000	270.427	7035.00	6359.65	1630.87	-6153.72	0.00	
13524.00†	90.000	270.427	7035.00	6457.53	1631.61	-6253.72	0.00	
13624.00†	90.000	270.427	7035.00	6555.40	1632.36	-6353.72	0.00	
13724.00†	90.000	270.427	7035.00	6653.28	1633.10	-6453.71	0.00	
13824.00†	90.000	270.427	7035.00	6751.16	1633.85	-6553.71	0.00	
13924.00†	90.000	270.427	7035.00	6849.04	1634.59	-6653.71	0.00	
14024.00†	90.000	270.427	7035.00	6946.92	1635.34	-6753.70	0.00	
14124.00†	90.000	270.427	7035.00	7044.79	1636.08	-6853.70	0.00	
14224.00†	90.000	270.427	7035.00	7142.67	1636.83	-6953.70	0.00	
14324.00†	90.000	270.427	7035.00	7240.55	1637.57	-7053.70	0.00	
14424.00†	90.000	270.427	7035.00	7338.43	1638.32	-7153.69	0.00	



Planned Wellpath Report

LAUNER 2 (REV-B.0) PWP

Page 7 of 8



REFERENCE WELLPATH IDENTIFICATION

Operator	EXTRACTION OIL & GAS	Slot	SLOT#14 LAUNER 2(884'FSL & 285'FEL,SEC.26)
Area	COLORADO	Well	LAUNER 2
Field	WELD COUNTY (NAD83/TRUE NORTH)	Wellbore	LAUNER 2 PWB
Facility	SEC.26-T07N-R67W		

WELLPATH DATA (155 stations) † = interpolated/extrapolated station

MD [ft]	Inclination [°]	Azimuth [°]	TVD [ft]	Vert Sect [ft]	North [ft]	East [ft]	DLS [°/100ft]	Comments
14524.00†	90.000	270.427	7035.00	7436.31	1639.06	-7253.69	0.00	
14624.00†	90.000	270.427	7035.00	7534.18	1639.81	-7353.69	0.00	
14724.00†	90.000	270.427	7035.00	7632.06	1640.55	-7453.68	0.00	
14824.00†	90.000	270.427	7035.00	7729.94	1641.30	-7553.68	0.00	
14829.03	90.000	270.427	7035.00 ²	7734.86	1641.33	-7558.71	0.00	End of Tangent

HOLE & CASING SECTIONS - Ref Wellbore: LAUNER 2 PWB Ref Wellpath: LAUNER 2 (REV-B.0) PWP

String/Diameter	Start MD [ft]	End MD [ft]	Interval [ft]	Start TVD [ft]	End TVD [ft]	Start N/S [ft]	Start E/W [ft]	End N/S [ft]	End E/W [ft]
7in Casing Intermediate	24.00	7576.12	7552.12	24.00	7035.00	0.00	0.00	1587.31	-306.00



Planned Wellpath Report

LAUNER 2 (REV-B.0) PWP

Page 8 of 8



REFERENCE WELLPATH IDENTIFICATION				
Operator	EXTRACTION OIL & GAS	Slot	SLOT#14 LAUNER 2(884'FSL & 285'FEL,SEC.26)	
Area	COLORADO	Well	LAUNER 2	
Field	WELD COUNTY (NAD83/TRUE NORTH)	Wellbore	LAUNER 2 PWB	
Facility	SEC.26-T07N-R67W			

TARGETS									
Name	MD [ft]	TVD [ft]	North [ft]	East [ft]	Grid East [US ft]	Grid North [US ft]	Latitude	Longitude	Shape
SEC.26-T07N-R67W		-17.00	3908.81	-216.21	3179860.07	1444245.18	40°33'03.784"N	104°51'09.932"W	polygon
SEC.27-T07N-R67W		-17.00	3908.81	-216.21	3179860.07	1444245.18	40°33'03.784"N	104°51'09.932"W	polygon
2) LAUNER 2 BHL ON PLAT REV-1(2534'FSL & 2562'FEL,SEC.27)	14829.03	7035.00	1641.33	-7558.71	3172534.57	1441924.18	40°32'41.366"N	104°52'45.041"W	point
LAUNER 2 DRILLING CORRIDOR(60')		7035.00	0.00	0.00	3180104.83	1440338.18	40°32'25.159"N	104°51'07.132"W	polygon
LAUNER 2 LANDING		7035.00	1587.35	-173.98	3179919.26	1441924.17	40°32'40.844"N	104°51'09.385"W	point
1) LAUNER 2 LANDING REV-1	7576.12	7035.00	1587.31	-306.00	3179787.24	1441923.16	40°32'40.844"N	104°51'11.095"W	point

SURVEY PROGRAM - Ref Wellbore: LAUNER 2 PWB Ref Wellpath: LAUNER 2 (REV-B.0) PWP				
Start MD [ft]	End MD [ft]	Positional Uncertainty Model	Log Name/Comment	Wellbore
24.00	15000.00	NaviTrak (Standard)		LAUNER 2 PWB