

EXTRACTION OIL & GAS

Location: COLORADO Slot: SLOT#13 LAUNER 1(907'FSL & 270'FEL,SEC.26)
Field: WELD COUNTY (NAD83/TRUE NORTH) Well: LAUNER 1
Facility: SEC.26-T07N-R67W Wellbore: LAUNER 1 PWB

Plot reference wellpath is LAUNER 1 (REV-B.0) PWP

True vertical depths are referenced to RIG (RKB)	Grid System: NAD83 / Lambert Colorado SP, Northern Zone (501), US feet
Measured depths are referenced to RIG (RKB)	North Reference: True north
RIG (RKB) to Mean Sea Level: 4955 feet	Scale: True distance
Mean Sea Level to Mud line (At Slot: SLOT#13 LAUNER 1(907'FSL & 270'FEL,SEC.26)): 0 feet	Depths are in feet
Coordinates are in feet referenced to Slot	Created by: painsett on 10/7/2014

Location Information

Facility Name				Grid East (US ft)	Grid North (US ft)	Latitude	Longitude
SEC.26-T07N-R67W				3179860.101	1444245.219	40°33'03.784"N	104°51'09.932"W
Slot		Local N (ft)	Local E (ft)	Grid East (US ft)	Grid North (US ft)	Latitude	Longitude
SLOT#13 LAUNER 1(907'FSL & 270'FEL,SEC.26)		-3885.89	231.77	3180120.222	1440361.248	40°32'25.386"N	104°51'06.930"W
RIG (RKB) to Mud line (At Slot: SLOT#13 LAUNER 1(907'FSL & 270'FEL,SEC.26))						4955ft	
Mean Sea Level to Mud line (At Slot: SLOT#13 LAUNER 1(907'FSL & 270'FEL,SEC.26))						0ft	
RIG (RKB) to Mean Sea Level						4955ft	

Targets

Name	MD (ft)	TVD (ft)	Local N (ft)	Local E (ft)	Grid East (US ft)	Grid North (US ft)	Latitude	Longitude
SEC.26-T07N-R67W		-17.00	3885.85	-231.77	3179860.07	1444245.18	40°33'03.784"N	104°51'09.932"W
SEC.27-T07N-R67W		-17.00	3885.85	-231.77	3179860.07	1444245.18	40°33'03.784"N	104°51'09.932"W
LAUNER 1 BHL ON PLAT REV-1(2614'FNL & 2562'FEL,SEC.27)	15091.23	7270.00	1778.32	-7573.67	3172534.01	1442084.12	40°32'42.947"N	104°52'45.034"W
LAUNER 1 DRILLING CORRIDOR(60')		7270.00	0.00	0.00	3180120.22	1440361.25	40°32'25.386"N	104°51'06.930"W
LAUNER 1 LANDING		7270.00	1724.33	-189.27	3179918.37	1442084.10	40°32'42.425"N	104°51'09.382"W
LAUNER 1 LANDING REV-1	7838.36	7270.00	1724.35	-321.00	3179786.64	1442083.15	40°32'42.425"N	104°51'11.088"W

Survey Program

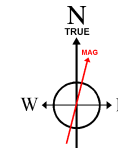
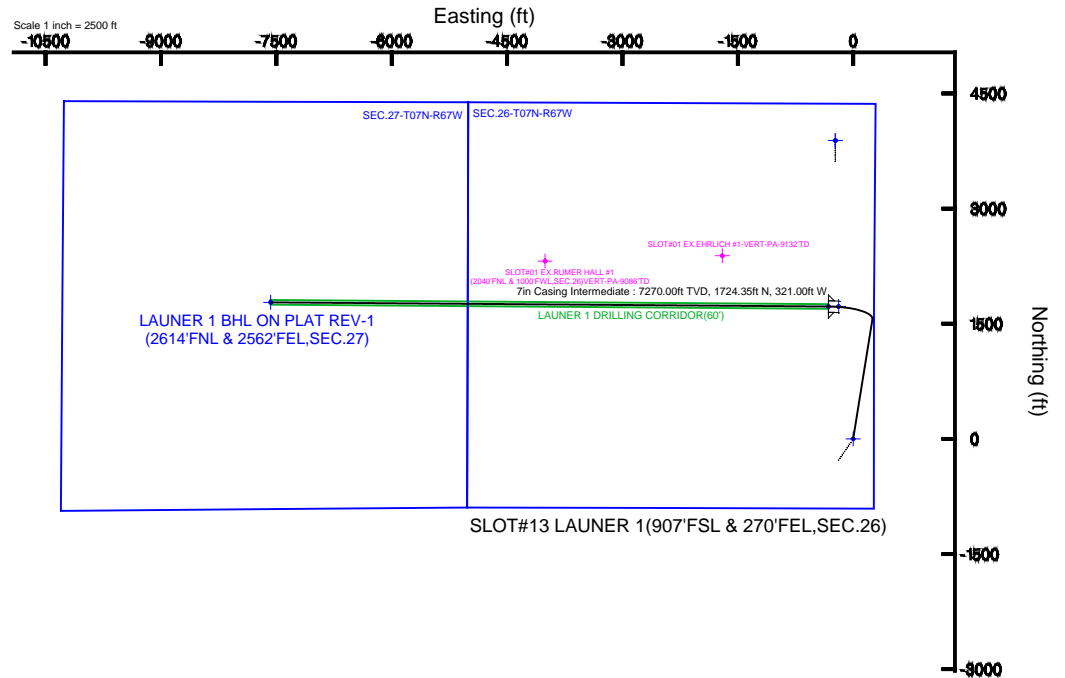
Start MD (ft)	End MD (ft)	Tool	Model	Log Name/Comment	Wellbore
24.00	16000.00	NaviTrak	NaviTrak (Standard)		LAUNER 1 PWB

Well Profile Data

Design Comment	MD (ft)	Inc (°)	Az (°)	TVD (ft)	Local N (ft)	Local E (ft)	DLS (°/100ft)	VS (ft)
Tie On	24.00	0.000	9.137	24.00	0.00	0.00	0.00	0.00
End of Tangent	850.00	0.000	9.137	850.00	0.00	0.00	0.00	0.00
End of Build	1657.78	16.156	9.137	1647.12	111.70	17.96	2.00	8.04
End of Tangent	6914.21	16.156	9.137	6695.97	1555.73	250.21	0.00	112.03
End of 3D Arc	7838.36	90.000	270.426	7270.00	1724.35	-321.00	10.00	706.67
End of Tangent	15091.23	90.000	270.426	7270.00	1778.32	-7573.67	0.00	7779.65

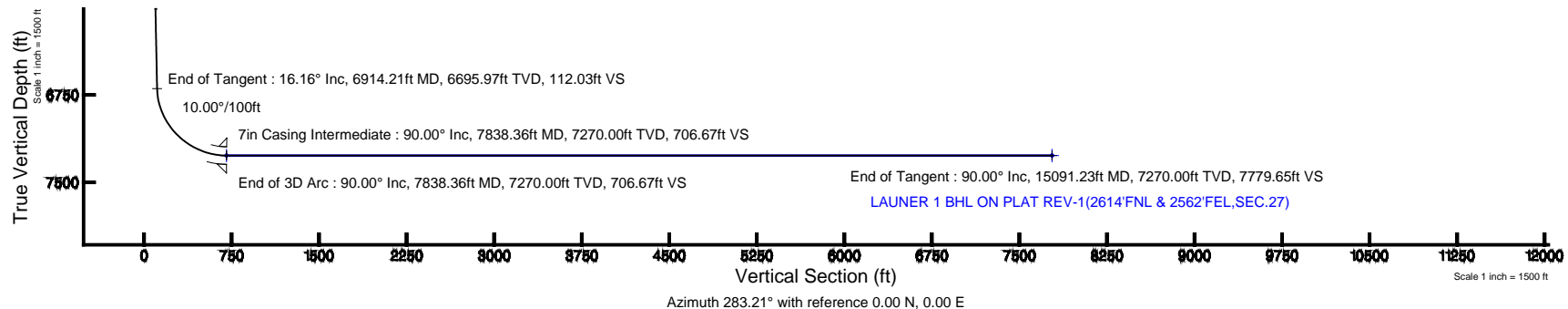


Scale 1 inch = 2500 ft



BGGM (1945.0 to 2016.0) Dip: 67.04° Field: 52816.5 nT
Magnetic North is 8.59 degrees East of True North (at 7/24/2014)

To correct azimuth from Magnetic to True add 8.59 degrees





Planned Wellpath Report

LAUNER 1 (REV-B.0) PWP

Page 1 of 8



REFERENCE WELLPATH IDENTIFICATION

Operator	EXTRACTION OIL & GAS	Slot	SLOT#13 LAUNER 1(907'FSL & 270'FEL,SEC.26)
Area	COLORADO	Well	LAUNER 1
Field	WELD COUNTY (NAD83/TRUE NORTH)	Wellbore	LAUNER 1 PWB
Facility	SEC.26-T07N-R67W		

REPORT SETUP INFORMATION

Projection System	NAD83 / Lambert Colorado SP, Northern Zone (501), US feet	Software System	WellArchitect® 4.0.0
North Reference	True	User	Painsetr
Scale	0.99997	Report Generated	10/7/2014 at 10:26:08 AM
Convergence at slot	n/a	Database/Source file	WA_Denver/LAUNER_1_PWB.xml

WELLPATH LOCATION

	Local coordinates		Grid coordinates		Geographic coordinates	
	North[ft]	East[ft]	Easting[US ft]	Northing[US ft]	Latitude	Longitude
Slot Location	-3885.89	231.77	3180120.22	1440361.25	40°32'25.386"N	104°51'06.930"W
Facility Reference Pt			3179860.10	1444245.22	40°33'03.784"N	104°51'09.932"W
Field Reference Pt			3185481.27	1419166.81	40°28'55.560"N	104°49'59.556"W

WELLPATH DATUM

Calculation method	Minimum curvature	RIG (RKB) to Facility Vertical Datum	4955.00ft
Horizontal Reference Pt	Slot	RIG (RKB) to Mean Sea Level	4955.00ft
Vertical Reference Pt	RIG (RKB)	RIG (RKB) to Mud Line at Slot (SLOT#13 LAUNER 1(907'FSL & 270'FEL,SEC.26))	4955.00ft
MD Reference Pt	RIG (RKB)	Section Origin	N 0.00, E 0.00 ft
Field Vertical Reference	Mean Sea Level	Section Azimuth	283.21°



Planned Wellpath Report

LAUNER 1 (REV-B.0) PWP

Page 2 of 8



REFERENCE WELLPATH IDENTIFICATION

Operator	EXTRACTION OIL & GAS	Slot	SLOT#13 LAUNER 1(907'FSL & 270'FEL,SEC.26)
Area	COLORADO	Well	LAUNER 1
Field	WELD COUNTY (NAD83/TRUE NORTH)	Wellbore	LAUNER 1 PWB
Facility	SEC.26-T07N-R67W		

WELLPATH DATA (157 stations) † = interpolated/extrapolated station

MD [ft]	Inclination [°]	Azimuth [°]	TVD [ft]	Vert Sect [ft]	North [ft]	East [ft]	DLS [°/100ft]	Comments
0.00†	0.000	9.137	0.00	0.00	0.00	0.00	0.00	
24.00	0.000	9.137	24.00	0.00	0.00	0.00	0.00	Tie On
124.00†	0.000	9.137	124.00	0.00	0.00	0.00	0.00	
224.00†	0.000	9.137	224.00	0.00	0.00	0.00	0.00	
324.00†	0.000	9.137	324.00	0.00	0.00	0.00	0.00	
424.00†	0.000	9.137	424.00	0.00	0.00	0.00	0.00	
524.00†	0.000	9.137	524.00	0.00	0.00	0.00	0.00	
624.00†	0.000	9.137	624.00	0.00	0.00	0.00	0.00	
724.00†	0.000	9.137	724.00	0.00	0.00	0.00	0.00	
824.00†	0.000	9.137	824.00	0.00	0.00	0.00	0.00	
850.00	0.000	9.137	850.00	0.00	0.00	0.00	0.00	End of Tangent
924.00†	1.480	9.137	923.99	0.07	0.94	0.15	2.00	
1024.00†	3.480	9.137	1023.89	0.38	5.22	0.84	2.00	
1124.00†	5.480	9.137	1123.58	0.93	12.93	2.08	2.00	
1224.00†	7.480	9.137	1222.94	1.73	24.07	3.87	2.00	
1324.00†	9.480	9.137	1321.84	2.78	38.63	6.21	2.00	
1424.00†	11.480	9.137	1420.17	4.07	56.59	9.10	2.00	
1524.00†	13.480	9.137	1517.80	5.61	77.92	12.53	2.00	
1624.00†	15.480	9.137	1614.62	7.39	102.61	16.50	2.00	
1657.78	16.156	9.137	1647.12	8.04	111.70	17.96	2.00	End of Build
1724.00†	16.156	9.137	1710.72	9.35	129.89	20.89	0.00	
1824.00†	16.156	9.137	1806.77	11.33	157.36	25.31	0.00	
1924.00†	16.156	9.137	1902.83	13.31	184.83	29.73	0.00	
2024.00†	16.156	9.137	1998.88	15.29	212.30	34.15	0.00	
2124.00†	16.156	9.137	2094.93	17.27	239.77	38.56	0.00	
2224.00†	16.156	9.137	2190.98	19.25	267.25	42.98	0.00	
2324.00†	16.156	9.137	2287.03	21.22	294.72	47.40	0.00	
2424.00†	16.156	9.137	2383.08	23.20	322.19	51.82	0.00	
2524.00†	16.156	9.137	2479.13	25.18	349.66	56.24	0.00	
2624.00†	16.156	9.137	2575.18	27.16	377.13	60.65	0.00	



Planned Wellpath Report

LAUNER 1 (REV-B.0) PWP

Page 3 of 8



REFERENCE WELLPATH IDENTIFICATION			
Operator	EXTRACTION OIL & GAS	Slot	SLOT#13 LAUNER 1(907'FSL & 270'FEL,SEC.26)
Area	COLORADO	Well	LAUNER 1
Field	WELD COUNTY (NAD83/TRUE NORTH)	Wellbore	LAUNER 1 PWB
Facility	SEC.26-T07N-R67W		

WELLPATH DATA (157 stations) † = interpolated/extrapolated station								
MD [ft]	Inclination [°]	Azimuth [°]	TVD [ft]	Vert Sect [ft]	North [ft]	East [ft]	DLS [°/100ft]	Comments
2724.00†	16.156	9.137	2671.23	29.14	404.60	65.07	0.00	
2824.00†	16.156	9.137	2767.28	31.12	432.08	69.49	0.00	
2924.00†	16.156	9.137	2863.33	33.09	459.55	73.91	0.00	
3024.00†	16.156	9.137	2959.39	35.07	487.02	78.33	0.00	
3124.00†	16.156	9.137	3055.44	37.05	514.49	82.75	0.00	
3224.00†	16.156	9.137	3151.49	39.03	541.96	87.16	0.00	
3324.00†	16.156	9.137	3247.54	41.01	569.44	91.58	0.00	
3424.00†	16.156	9.137	3343.59	42.99	596.91	96.00	0.00	
3524.00†	16.156	9.137	3439.64	44.96	624.38	100.42	0.00	
3624.00†	16.156	9.137	3535.69	46.94	651.85	104.84	0.00	
3724.00†	16.156	9.137	3631.74	48.92	679.32	109.26	0.00	
3824.00†	16.156	9.137	3727.79	50.90	706.79	113.67	0.00	
3924.00†	16.156	9.137	3823.84	52.88	734.27	118.09	0.00	
4024.00†	16.156	9.137	3919.90	54.86	761.74	122.51	0.00	
4124.00†	16.156	9.137	4015.95	56.83	789.21	126.93	0.00	
4224.00†	16.156	9.137	4112.00	58.81	816.68	131.35	0.00	
4324.00†	16.156	9.137	4208.05	60.79	844.15	135.77	0.00	
4424.00†	16.156	9.137	4304.10	62.77	871.62	140.18	0.00	
4524.00†	16.156	9.137	4400.15	64.75	899.10	144.60	0.00	
4624.00†	16.156	9.137	4496.20	66.73	926.57	149.02	0.00	
4724.00†	16.156	9.137	4592.25	68.70	954.04	153.44	0.00	
4824.00†	16.156	9.137	4688.30	70.68	981.51	157.86	0.00	
4924.00†	16.156	9.137	4784.35	72.66	1008.98	162.28	0.00	
5024.00†	16.156	9.137	4880.40	74.64	1036.45	166.69	0.00	
5124.00†	16.156	9.137	4976.46	76.62	1063.93	171.11	0.00	
5224.00†	16.156	9.137	5072.51	78.60	1091.40	175.53	0.00	
5324.00†	16.156	9.137	5168.56	80.57	1118.87	179.95	0.00	
5424.00†	16.156	9.137	5264.61	82.55	1146.34	184.37	0.00	
5524.00†	16.156	9.137	5360.66	84.53	1173.81	188.79	0.00	
5624.00†	16.156	9.137	5456.71	86.51	1201.28	193.20	0.00	



Planned Wellpath Report

LAUNER 1 (REV-B.0) PWP

Page 4 of 8



REFERENCE WELLPATH IDENTIFICATION

Operator	EXTRACTION OIL & GAS	Slot	SLOT#13 LAUNER 1(907'FSL & 270'FEL,SEC.26)
Area	COLORADO	Well	LAUNER 1
Field	WELD COUNTY (NAD83/TRUE NORTH)	Wellbore	LAUNER 1 PWB
Facility	SEC.26-T07N-R67W		

WELLPATH DATA (157 stations) † = interpolated/extrapolated station

MD [ft]	Inclination [°]	Azimuth [°]	TVD [ft]	Vert Sect [ft]	North [ft]	East [ft]	DLS [°/100ft]	Comments
5724.00†	16.156	9.137	5552.76	88.49	1228.76	197.62	0.00	
5824.00†	16.156	9.137	5648.81	90.47	1256.23	202.04	0.00	
5924.00†	16.156	9.137	5744.86	92.44	1283.70	206.46	0.00	
6024.00†	16.156	9.137	5840.91	94.42	1311.17	210.88	0.00	
6124.00†	16.156	9.137	5936.97	96.40	1338.64	215.30	0.00	
6224.00†	16.156	9.137	6033.02	98.38	1366.11	219.71	0.00	
6324.00†	16.156	9.137	6129.07	100.36	1393.59	224.13	0.00	
6424.00†	16.156	9.137	6225.12	102.34	1421.06	228.55	0.00	
6524.00†	16.156	9.137	6321.17	104.31	1448.53	232.97	0.00	
6624.00†	16.156	9.137	6417.22	106.29	1476.00	237.39	0.00	
6724.00†	16.156	9.137	6513.27	108.27	1503.47	241.81	0.00	
6824.00†	16.156	9.137	6609.32	110.25	1530.94	246.22	0.00	
6914.21	16.156	9.137	6695.97	112.03	1555.73	250.21	0.00	End of Tangent
6924.00†	16.042	5.630	6705.38	112.31	1558.42	250.56	10.00	
7024.00†	18.076	331.746	6801.20	124.44	1585.90	244.55	10.00	
7124.00†	24.308	309.767	6894.54	153.19	1612.80	221.33	10.00	
7224.00†	32.398	297.250	6982.55	197.71	1638.30	181.59	10.00	
7324.00†	41.262	289.475	7062.55	256.63	1661.62	126.55	10.00	
7424.00†	50.490	284.085	7132.13	328.16	1682.05	57.87	10.00	
7524.00†	59.908	279.978	7189.15	410.13	1698.98	-22.36	10.00	
7624.00†	69.431	276.595	7231.90	500.05	1711.88	-111.69	10.00	
7724.00†	79.011	273.614	7259.06	595.19	1720.38	-207.42	10.00	
7824.00†	88.619	270.822	7269.83	692.65	1724.20	-306.64	10.00	
7838.36	90.000	270.426	7270.00 [†]	706.67	1724.35	-321.00	10.00	End of 3D Arc
7924.00†	90.000	270.426	7270.00	790.18	1724.99	-406.64	0.00	
8024.00†	90.000	270.426	7270.00	887.70	1725.73	-506.63	0.00	
8124.00†	90.000	270.426	7270.00	985.22	1726.48	-606.63	0.00	
8224.00†	90.000	270.426	7270.00	1082.74	1727.22	-706.63	0.00	
8324.00†	90.000	270.426	7270.00	1180.26	1727.97	-806.63	0.00	
8424.00†	90.000	270.426	7270.00	1277.78	1728.71	-906.62	0.00	



Planned Wellpath Report

LAUNER 1 (REV-B.0) PWP

Page 5 of 8



REFERENCE WELLPATH IDENTIFICATION

Operator	EXTRACTION OIL & GAS	Slot	SLOT#13 LAUNER 1(907'FSL & 270'FEL,SEC.26)
Area	COLORADO	Well	LAUNER 1
Field	WELD COUNTY (NAD83/TRUE NORTH)	Wellbore	LAUNER 1 PWB
Facility	SEC.26-T07N-R67W		

WELLPATH DATA (157 stations) † = interpolated/extrapolated station

MD [ft]	Inclination [°]	Azimuth [°]	TVD [ft]	Vert Sect [ft]	North [ft]	East [ft]	DLS [°/100ft]	Comments
8524.00†	90.000	270.426	7270.00	1375.30	1729.46	-1006.62	0.00	
8624.00†	90.000	270.426	7270.00	1472.82	1730.20	-1106.62	0.00	
8724.00†	90.000	270.426	7270.00	1570.34	1730.94	-1206.62	0.00	
8824.00†	90.000	270.426	7270.00	1667.86	1731.69	-1306.61	0.00	
8924.00†	90.000	270.426	7270.00	1765.38	1732.43	-1406.61	0.00	
9024.00†	90.000	270.426	7270.00	1862.90	1733.18	-1506.61	0.00	
9124.00†	90.000	270.426	7270.00	1960.42	1733.92	-1606.60	0.00	
9224.00†	90.000	270.426	7270.00	2057.94	1734.66	-1706.60	0.00	
9324.00†	90.000	270.426	7270.00	2155.46	1735.41	-1806.60	0.00	
9424.00†	90.000	270.426	7270.00	2252.98	1736.15	-1906.60	0.00	
9524.00†	90.000	270.426	7270.00	2350.50	1736.90	-2006.59	0.00	
9624.00†	90.000	270.426	7270.00	2448.02	1737.64	-2106.59	0.00	
9724.00†	90.000	270.426	7270.00	2545.54	1738.38	-2206.59	0.00	
9824.00†	90.000	270.426	7270.00	2643.06	1739.13	-2306.59	0.00	
9924.00†	90.000	270.426	7270.00	2740.58	1739.87	-2406.58	0.00	
10024.00†	90.000	270.426	7270.00	2838.10	1740.62	-2506.58	0.00	
10124.00†	90.000	270.426	7270.00	2935.62	1741.36	-2606.58	0.00	
10224.00†	90.000	270.426	7270.00	3033.14	1742.11	-2706.57	0.00	
10324.00†	90.000	270.426	7270.00	3130.66	1742.85	-2806.57	0.00	
10424.00†	90.000	270.426	7270.00	3228.17	1743.59	-2906.57	0.00	
10524.00†	90.000	270.426	7270.00	3325.69	1744.34	-3006.57	0.00	
10624.00†	90.000	270.426	7270.00	3423.21	1745.08	-3106.56	0.00	
10724.00†	90.000	270.426	7270.00	3520.73	1745.83	-3206.56	0.00	
10824.00†	90.000	270.426	7270.00	3618.25	1746.57	-3306.56	0.00	
10924.00†	90.000	270.426	7270.00	3715.77	1747.31	-3406.55	0.00	
11024.00†	90.000	270.426	7270.00	3813.29	1748.06	-3506.55	0.00	
11124.00†	90.000	270.426	7270.00	3910.81	1748.80	-3606.55	0.00	
11224.00†	90.000	270.426	7270.00	4008.33	1749.55	-3706.55	0.00	
11324.00†	90.000	270.426	7270.00	4105.85	1750.29	-3806.54	0.00	
11424.00†	90.000	270.426	7270.00	4203.37	1751.03	-3906.54	0.00	



Planned Wellpath Report

LAUNER 1 (REV-B.0) PWP

Page 6 of 8



REFERENCE WELLPATH IDENTIFICATION

Operator	EXTRACTION OIL & GAS	Slot	SLOT#13 LAUNER 1(907'FSL & 270'FEL,SEC.26)
Area	COLORADO	Well	LAUNER 1
Field	WELD COUNTY (NAD83/TRUE NORTH)	Wellbore	LAUNER 1 PWB
Facility	SEC.26-T07N-R67W		

WELLPATH DATA (157 stations) † = interpolated/extrapolated station

MD [ft]	Inclination [°]	Azimuth [°]	TVD [ft]	Vert Sect [ft]	North [ft]	East [ft]	DLS [°/100ft]	Comments
11524.00†	90.000	270.426	7270.00	4300.89	1751.78	-4006.54	0.00	
11624.00†	90.000	270.426	7270.00	4398.41	1752.52	-4106.54	0.00	
11724.00†	90.000	270.426	7270.00	4495.93	1753.27	-4206.53	0.00	
11824.00†	90.000	270.426	7270.00	4593.45	1754.01	-4306.53	0.00	
11924.00†	90.000	270.426	7270.00	4690.97	1754.75	-4406.53	0.00	
12024.00†	90.000	270.426	7270.00	4788.49	1755.50	-4506.52	0.00	
12124.00†	90.000	270.426	7270.00	4886.01	1756.24	-4606.52	0.00	
12224.00†	90.000	270.426	7270.00	4983.53	1756.99	-4706.52	0.00	
12324.00†	90.000	270.426	7270.00	5081.05	1757.73	-4806.52	0.00	
12424.00†	90.000	270.426	7270.00	5178.57	1758.48	-4906.51	0.00	
12524.00†	90.000	270.426	7270.00	5276.09	1759.22	-5006.51	0.00	
12624.00†	90.000	270.426	7270.00	5373.61	1759.96	-5106.51	0.00	
12724.00†	90.000	270.426	7270.00	5471.13	1760.71	-5206.50	0.00	
12824.00†	90.000	270.426	7270.00	5568.65	1761.45	-5306.50	0.00	
12924.00†	90.000	270.426	7270.00	5666.17	1762.20	-5406.50	0.00	
13024.00†	90.000	270.426	7270.00	5763.69	1762.94	-5506.50	0.00	
13124.00†	90.000	270.426	7270.00	5861.21	1763.68	-5606.49	0.00	
13224.00†	90.000	270.426	7270.00	5958.73	1764.43	-5706.49	0.00	
13324.00†	90.000	270.426	7270.00	6056.25	1765.17	-5806.49	0.00	
13424.00†	90.000	270.426	7270.00	6153.77	1765.92	-5906.49	0.00	
13524.00†	90.000	270.426	7270.00	6251.29	1766.66	-6006.48	0.00	
13624.00†	90.000	270.426	7270.00	6348.81	1767.40	-6106.48	0.00	
13724.00†	90.000	270.426	7270.00	6446.33	1768.15	-6206.48	0.00	
13824.00†	90.000	270.426	7270.00	6543.85	1768.89	-6306.47	0.00	
13924.00†	90.000	270.426	7270.00	6641.37	1769.64	-6406.47	0.00	
14024.00†	90.000	270.426	7270.00	6738.89	1770.38	-6506.47	0.00	
14124.00†	90.000	270.426	7270.00	6836.41	1771.13	-6606.47	0.00	
14224.00†	90.000	270.426	7270.00	6933.93	1771.87	-6706.46	0.00	
14324.00†	90.000	270.426	7270.00	7031.45	1772.61	-6806.46	0.00	
14424.00†	90.000	270.426	7270.00	7128.97	1773.36	-6906.46	0.00	



Planned Wellpath Report

LAUNER 1 (REV-B.0) PWP

Page 7 of 8



REFERENCE WELLPATH IDENTIFICATION

Operator	EXTRACTION OIL & GAS	Slot	SLOT#13 LAUNER 1(907'FSL & 270'FEL,SEC.26)
Area	COLORADO	Well	LAUNER 1
Field	WELD COUNTY (NAD83/TRUE NORTH)	Wellbore	LAUNER 1 PWB
Facility	SEC.26-T07N-R67W		

WELLPATH DATA (157 stations) † = interpolated/extrapolated station

MD [ft]	Inclination [°]	Azimuth [°]	TVD [ft]	Vert Sect [ft]	North [ft]	East [ft]	DLS [°/100ft]	Comments
14524.00†	90.000	270.426	7270.00	7226.49	1774.10	-7006.45	0.00	
14624.00†	90.000	270.426	7270.00	7324.00	1774.85	-7106.45	0.00	
14724.00†	90.000	270.426	7270.00	7421.52	1775.59	-7206.45	0.00	
14824.00†	90.000	270.426	7270.00	7519.04	1776.33	-7306.45	0.00	
14924.00†	90.000	270.426	7270.00	7616.56	1777.08	-7406.44	0.00	
15024.00†	90.000	270.426	7270.00	7714.08	1777.82	-7506.44	0.00	
15091.23	90.000	270.426	7270.00 ²	7779.65	1778.32	-7573.67	0.00	End of Tangent

HOLE & CASING SECTIONS - Ref Wellbore: LAUNER 1 PWB Ref Wellpath: LAUNER 1 (REV-B.0) PWP

String/Diameter	Start MD [ft]	End MD [ft]	Interval [ft]	Start TVD [ft]	End TVD [ft]	Start N/S [ft]	Start E/W [ft]	End N/S [ft]	End E/W [ft]
7in Casing Intermediate	24.00	7838.36	7814.36	24.00	7270.00	0.00	0.00	1724.35	-321.00



Planned Wellpath Report

LAUNER 1 (REV-B.0) PWP

Page 8 of 8



REFERENCE WELLPATH IDENTIFICATION			
Operator	EXTRACTION OIL & GAS	Slot	SLOT#13 LAUNER 1(907'FSL & 270'FEL,SEC.26)
Area	COLORADO	Well	LAUNER 1
Field	WELD COUNTY (NAD83/TRUE NORTH)	Wellbore	LAUNER 1 PWB
Facility	SEC.26-T07N-R67W		

TARGETS									
Name	MD [ft]	TVD [ft]	North [ft]	East [ft]	Grid East [US ft]	Grid North [US ft]	Latitude	Longitude	Shape
SEC.26-T07N-R67W		-17.00	3885.85	-231.77	3179860.07	1444245.18	40°33'03.784"N	104°51'09.932"W	polygon
SEC.27-T07N-R67W		-17.00	3885.85	-231.77	3179860.07	1444245.18	40°33'03.784"N	104°51'09.932"W	polygon
2) LAUNER 1 BHL ON PLAT REV-1(2614'FNL & 2562'FEL,SEC.27)	15091.23	7270.00	1778.32	-7573.67	3172534.01	1442084.12	40°32'42.947"N	104°52'45.034"W	point
LAUNER 1 DRILLING CORRIDOR(60')		7270.00	0.00	0.00	3180120.22	1440361.25	40°32'25.386"N	104°51'06.930"W	polygon
LAUNER 1 LANDING		7270.00	1724.33	-189.27	3179918.37	1442084.10	40°32'42.425"N	104°51'09.382"W	point
1) LAUNER 1 LANDING REV-1	7838.36	7270.00	1724.35	-321.00	3179786.64	1442083.15	40°32'42.425"N	104°51'11.088"W	point

SURVEY PROGRAM - Ref Wellbore: LAUNER 1 PWB Ref Wellpath: LAUNER 1 (REV-B.0) PWP				
Start MD [ft]	End MD [ft]	Positional Uncertainty Model	Log Name/Comment	Wellbore
24.00	16000.00	NaviTrak (Standard)		LAUNER 1 PWB