

HALLIBURTON

iCem® Service

EXTRACTION OIL & GAS

Date: Tuesday, August 02, 2016

Winder #12

Surface

Job Date: Saturday, July 02, 2016

Sincerely,

Lauren Roberts

Legal Notice

Warning Disclaimer

Although the information contained in this report is based on sound engineering practices, the copyright owner(s) does (do) not accept any responsibility whatsoever, in negligence or otherwise, for any loss or damage arising from the possession or use of the report whether in terms of correctness or otherwise. The application, therefore, by the user of this report or any part thereof, is solely at the user's own risk.

Limitations of Liability

Except as expressly set forth herein, there are no representations or warranties by Halliburton, express or implied, including implied warranties of merchantability and/or fitness for a particular purpose. In no event will Halliburton or its suppliers be liable for consequential, incidental, special, punitive or exemplary damages (including, without limitation, loss of data, profits, use of hardware, or software). Customer accepts full responsibility for any investment made based on results from the Software. Any interpretations, analyses or modeling of any data, including, but not limited to Customer data, and any recommendation or decisions based upon such interpretations, analyses or modeling are opinions based upon inferences from measurements and empirical relationships and assumptions, which inferences and assumptions are not infallible, and with respect to which professional may differ. Accordingly, Halliburton cannot and does not warrant the accuracy, correctness or completeness of any such interpretation, recommendation, modeling or other products of the Software Product. As such, any interpretation, recommendation or modeling resulting from the Software for the purpose of any drilling, well treatment, production or financial decision will be at the sole risk of Customer. Under no circumstances will Halliburton or its suppliers be liable for any damages.

Table of Contents

1.0 Cementing Job Summary 4

 1.1 Executive Summary4

2.0 Real-Time Job Summary 7

 2.1 Job Event Log7

1.0 Cementing Job Summary

1.1 Executive Summary

Halliburton appreciates the opportunity to perform the cementing services on the **Winder #12** cement **Surface** casing job. A pre-job safety meeting was held before the job where details of the job were discussed, potential safety hazards were reviewed, and environmental compliance procedures were outlined.

22 bbl. of cement returned to surface.

Halliburton maintains a continuous quality improvement process and appreciates any comments or suggestions that you may have. Halliburton again thanks you for the opportunity to perform service work on this well. We hope to be your solutions provider for future projects.

Respectfully,

Halliburton [Ft. Lupton]

The Road to Excellence Starts with Safety

Sold To #: 369404		Ship To #: 3535888		Quote #:		Sales Order #: 0903402877					
Customer: EXTRACTION OIL & GAS -				Customer Rep:							
Well Name: WINDER			Well #: 12		API/UWI #: 05-123-39583-00						
Field: SEVERANCE		City (SAP): WINDSOR		County/Parish: WELD		State: COLORADO					
Legal Description: NE NE-9-6N-67W-962FNL-684FEL											
Contractor: UNKNOWN				Rig/Platform Name/Num: WORKOVER RIG							
Job BOM: 7521											
Well Type: HORIZONTAL OIL											
Sales Person: HALAMERICA\HB71271				Srv Supervisor: Aaron Smith							
Job											
Formation Name											
Formation Depth (MD)		Top		Bottom							
Form Type				BHST							
Job depth MD		1539ft		Job Depth TVD		1539					
Water Depth				Wk Ht Above Floor							
Perforation Depth (MD)		From		To							
Well Data											
Description	New / Used	Size in	ID in	Weight lbm/ft	Thread	Grade	Top MD ft	Bottom MD ft	Top TVD ft	Bottom TVD ft	
Casing		9.625	8.921	36			0	1539	0	1539	
Open Hole Section			13.5				50	1539	50	1539	
Tools and Accessories											
Type	Size in	Qty	Make	Depth ft		Type	Size in	Qty	Make		
Guide Shoe	9.625					Top Plug	9.625	1	Hwe		
Float Shoe	9.625	1		1539		Bottom Plug	9.625		HES		
Float Collar	9.625	1		1494		SSR plug set	9.625		HES		
Insert Float	9.625					Plug Container	9.625		HES		
Stage Tool	9.625					Centralizers	9.625		HES		
Fluid Data											
Stage/Plug #: 1											
Fluid #	Stage Type	Fluid Name			Qty	Qty UoM	Mixing Density lbm/gal	Yield ft3/sack	Mix Fluid Gal	Rate bbl/min	Total Mix Fluid Gal
1	Fresh Water	Fresh Water			20	bbl	8.33				

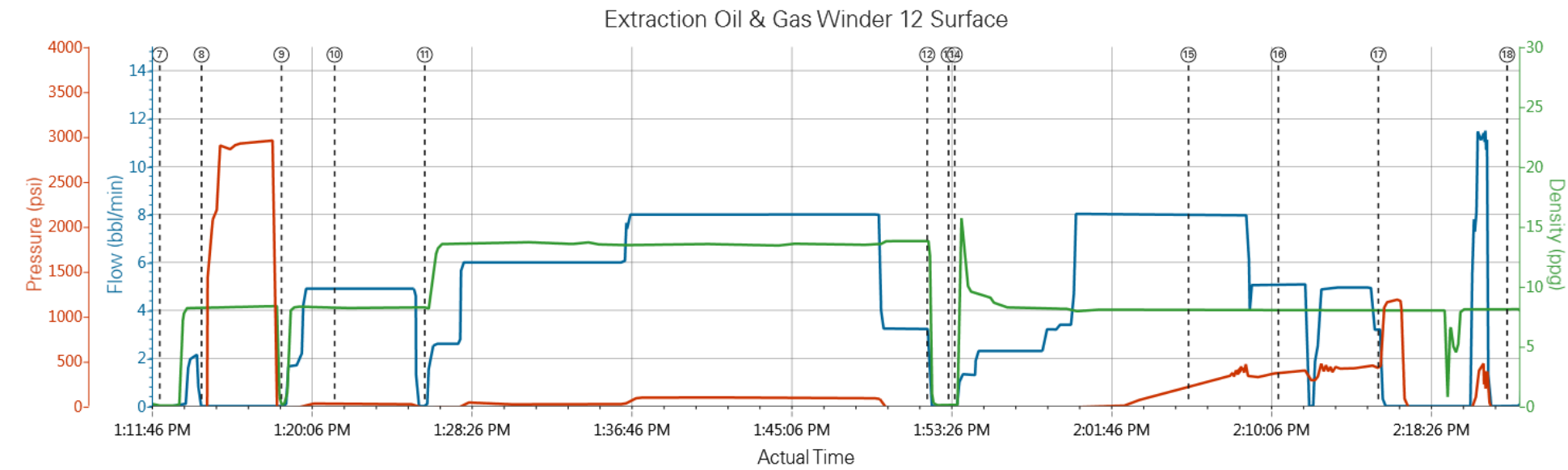
Fluid #	Stage Type	Fluid Name	Qty	Qty UoM	Mixing Density lbm/gal	Yield ft3/sack	Mix Fluid Gal	Rate bbl/min	Total Mix Fluid Gal
2	SwiftCem	SWIFTCEM (TM) SYSTEM	550	sack	13.5	1.74		6	9.19
9.19 Gal		FRESH WATER							
Fluid #	Stage Type	Fluid Name	Qty	Qty UoM	Mixing Density lbm/gal	Yield ft3/sack	Mix Fluid Gal	Rate bbl/min	Total Mix Fluid Gal
3	Fresh water Displacement	Fresh Water	113	bbl	8.33				
Cement Left In Pipe		Amount	45 ft			Reason		Shoe Joint	
Comment									

2.0 Real-Time Job Summary

2.1 Job Event Log

Type	Seq. No.	Activity	Graph Label	Date	Time	Source	Combined Pump Rate (bbl/min)	Downhole Density (ppg)	Pass-Side Pump Pressure (psi)	Comments
Event	1	Call Out	Call Out	7/2/2016	03:00:00	USER				For O/L @ 0900.
Event	2	Depart from Service Center or Other Site	Depart from Service Center or Other Site	7/2/2016	06:30:00	USER				Journey management meeting held prior to departure.
Event	3	Arrive at Location from Service Center	Arrive at Location from Service Center	7/2/2016	07:30:00	USER				With all equipment and materials. Rig still pulling drill pipe,
Event	4	Pre-Rig Up Safety Meeting	Pre-Rig Up Safety Meeting	7/2/2016	07:40:00	USER				JSA to discuss the hazards of rig-up
Event	5	Casing on Bottom	Casing on Bottom	7/2/2016	12:45:00	USER	0.00	8.44	-59.00	
Event	6	Pre-Job Safety Meeting	Pre-Job Safety Meeting	7/2/2016	13:00:00	USER	0.00	8.43	-62.00	with all essential personnel
Event	7	Start Job	Start Job	7/2/2016	13:12:17	COM4	0.00	0.05	-60.00	With water supplied from frac tank, water tested good to mix cement, Temp 64, Cl 0, Ph 7.
Event	8	Test Lines	Test Lines	7/2/2016	13:14:28	COM4	0.00	8.25	-24.00	@3000 PSI
Event	9	Pump Spacer 1	Pump Spacer 1	7/2/2016	13:18:38	COM4	0.00	0.11	-32.00	10 Bbls Fresh Water with red dye
Event	10	Pump Spacer 2	Pump Spacer 2	7/2/2016	13:21:24	COM4	4.90	8.23	25.00	10 Bbls Fresh Water
Event	11	Pump Cement	Pump Cement	7/2/2016	13:26:06	COM4	0.10	8.25	-33.00	550 Sks (170.44 Bbls) SwiftCem @ 13.5 ppg, verified with scales.
Event	12	Shutdown	Shutdown	7/2/2016	13:52:17	COM4	0.00	13.79	-56.00	
Event	13	Drop Top Plug	Drop Top Plug	7/2/2016	13:53:24	COM4	0.00	0.07	-76.00	Pre-loaded HWE top plug in plug container, verified by customer rep.
Event	14	Pump Displacement	Pump Displacement	7/2/2016	13:53:43	COM4	0.10	0.07	-76.00	113 bbls fresh water
Event	15	Other	Spacer Returns to Surface	7/2/2016	14:05:54	COM4	8.00	8.02	216.00	@71 bbls Displacement 20 bbls to surface.
Event	16	Other	Cement Returns to Surface	7/2/2016	14:10:35	COM4	5.10	8.03	382.00	@91 Bbls displacement, 22 Bbls To Surface

Event	17	Bump Plug	Bump Plug	7/2/2016	14:15:48	USER	3.20	8.03	513.00	@500 psi over, final circulating pressure 467 psi
Event	18	End Job	End Job	7/2/2016	14:22:31	COM4	0.00	8.09	-72.00	Thanks Aaron Smith and Crew
Event	19	Pre-Rig Down Safety Meeting	Pre-Rig Down Safety Meeting	7/2/2016	14:40:00	USER				JSA to discuss the hazards of rig-down
Event	20	Depart Location for Service Center or Other Site	Depart Location for Service Center or Other Site	7/2/2016	15:00:00	USER				Depart location for next location



Comb Pump Rate (bbl/min)

DH Density (ppg)

PS Pump Press (psi)

Using on Bottom 0;8.44;-59

Start Job 0;0.05;-60

Pump Spacer 1 0;0.11;-32

Pump Cement 0.1;8.25;-33

Drop Top Plug 0;0.07;-76

Spacer Returns to Surface 8;8.02;216

Bump Plug 3.2;8.03;513

Pre-Rig Down Safety Meeting n/a;n/a;n/a

Job Safety Meeting 0;8.43;-62

Test Lines 0;8.25;-24

Pump Spacer 2 4.9;8.23;25

Shutdown 0;13.79;-56

Pump Displacement 0.1;0.07;-76

Cement Returns to Surface 5.1;8.03;382

End Job 0;8.09;-72

20 Depart Location for Service Center or Other Site n/a;n/a;n/a

▲ HALLIBURTON | iCem® Service

Created: 2016-07-02 12:41:12, Version: 4.2.393

Edit

