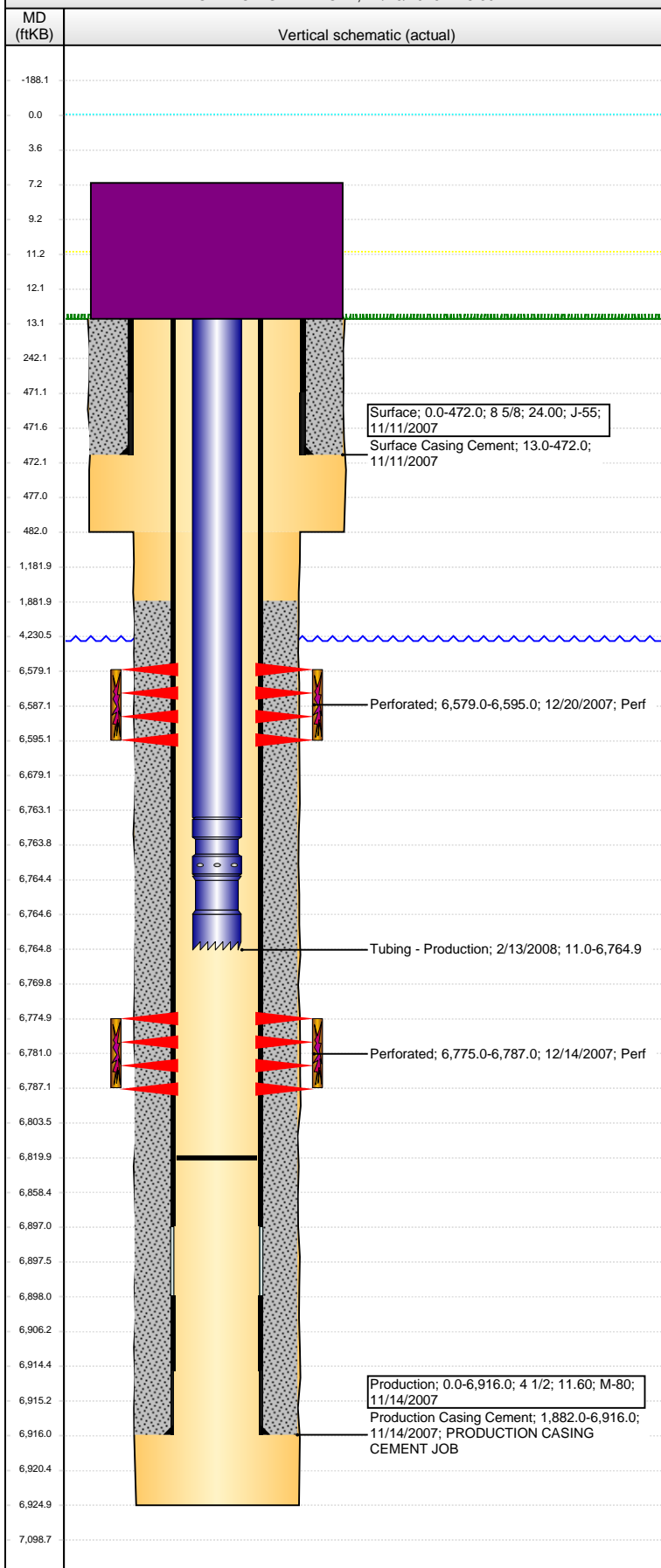


**Well Name: WILMOTH C14-19**

VERTICAL - ORIGINAL HOLE, 11/16/2016 7:18:30 AM



## Well Header

API	Business Unit	District	Well Config
05-123-24526	DJ BASIN	15	VERTICAL
Original KB Elevation (ft)	KB - GL / MSL (ftKB)	Spud Date	P & A Date
4,654	13.00	11/11/2007	
Comment			

## Directions To Well

WCR 57 & WCR 46, E 0.2, S 0.3 INTO LOCATION

## Congressional Location

Quarter 3	Quarter 4	Section	Township	Twnshp N/S Dir	Range	Range E/W Dir
SE	NW	14	4	N	64	W

## Bottom Hole Location

North-South Distance (ft)	From N or S Line	East-West Distance (ft)	From E or W Line

## Plug Back Total Depths

Date	Depth (ftKB)	Method	Com
12/14/2007	6,879.0	CASED HOLE LOG	DEPTH LOGGER FROM CBL
2/13/2008	6,820.0	TAG	PUSHED THE CAST IRON FLOW THUR PLUG TO...

## Wellbore Sections

Section Des	Size (in)	Act Top, MD (ftKB)	Act Btm, MD (ftKB)
Surface	12 1/4	13	482
Production	7 7/8	482	6,925

## Zone Statuses

Zone Name	Status Date	Status	Fluid Type	Job	Prod Method
NIOBRARA	12/22/2007	PR		DRILLING/CO...	
CODELL	12/22/2007	PR		DRILLING/CO...	

## Casing Strings

### Surface, 472.0ftKB

Casing Description	Run Date	OD (in)	Wt/Len (l...)	Grade	Top, MD (ft...)	MD (ftKB)
Surface	11/11/2007	8 5/8	24.00	J-55	0.0	472.0

### Production, 6,916.0ftKB

Casing Description	Run Date	OD (in)	Wt/Len (l...)	Grade	Top, MD (ft...)	MD (ftKB)
Production	11/14/2007	4 1/2	11.60	M-80	0.0	6,916.0

## Cement

Description	Top Depth (ftKB)	Bottom Depth (ftKB)
Surface Casing Cement	13.0	472.0
Description	Top Depth (ftKB)	Bottom Depth (ftKB)
Production Casing Cement	1,882.0	6,916.0

## Tubing Strings

Tubing Description	Run Date	String...	ID (in)	Wt (lb/ft)	Grade	Len (ft)	Set De...
Tubing - Production	2/13/2008	2 3/8	1.995	4.70	J-55	6,753.90	

## Tubing Components

Item Des	OD (in)	Wt (lb/ft)	Grade	Jts	Len (ft)	Btm (ftKB)	Btm (TVD) (ftKB)
Tubing	2 3/8	4.70	J-55	217	6,752.25	6,763.3	
Pump Seating Nipple	2 3/8			1	1.10	6,764.4	
Notched collar	2 3/8			1	0.55	6,764.9	

## Perforation Data

Zone	Bnch/St g	Entered Shot Total	Top (ftKB)	Btm (ftKB)	Date
NIOBRARA, ORIGINAL HOLE		64	6,579.00	6,595.00	12/20/2007
CODELL, ORIGINAL HOLE		48	6,775.00	6,787.00	12/14/2007

## Stimulations & Treatments

Date	Zone	Primary Job Type
12/20/2007	CODELL, ORIGINAL HOLE	DRILLING/COMPLETION - ORIGINAL
Technical Result	Tech Result Details	Tech Result Note
Success	According to Plan	

## Comment

(CODELL):PROBLEMS WITH TUB BYPASS WHEN STARTING ACID AND MARKING FLUSH. OVERFLUSHED 3.25 BBLS TO COMPENSATE AND GET ACID AT CORRECT DEPTH. (PLANNED OVERFLUSH 2.0 BBLS). GOT 6.5% (12 GALLONS) AHEAD ON GEL, LET USAGE GAIN TO MAINTAIN DESIRED VISCOSITY.

**Well Name: WILMOTH C14-19**

VERTICAL - ORIGINAL HOLE, 11/16/2016 7:18:32 AM

## Stimulations & Treatments

Date 12/20/2007	Zone NIOBRARA-CODELL, ORIGINAL HOLE	Primary Job Type DRILLING/COMPLETION - ORIGINAL
Technical Result Success	Tech Result Details According to Plan	Tech Result Note
Comment (NIOBRARA): GOT 2.9% GALLONS AHEAD ON GEL (14 GALLONS) BUT MADE NO CHANGES TO MAINTAIN DESIRED VISCOSITY.		

## Other In Hole

Run Date	Des	OD (in)	Top (ftKB)	Btm (ftKB)

## Logs

Date	Type	Top, MD (ftKB)	Btm, MD (ftKB)
11/14/2007	COMPENSATED DENSITY	2,600.0	6,928.0
11/14/2007	INDUCTION	472.0	6,928.0
11/14/2007	GR/DIL/COMP/COMP/SP/GAURD/CALIPER	500.0	6,925.0
12/14/2007	CBL/CCL/GR	1,760.0	6,868.0

