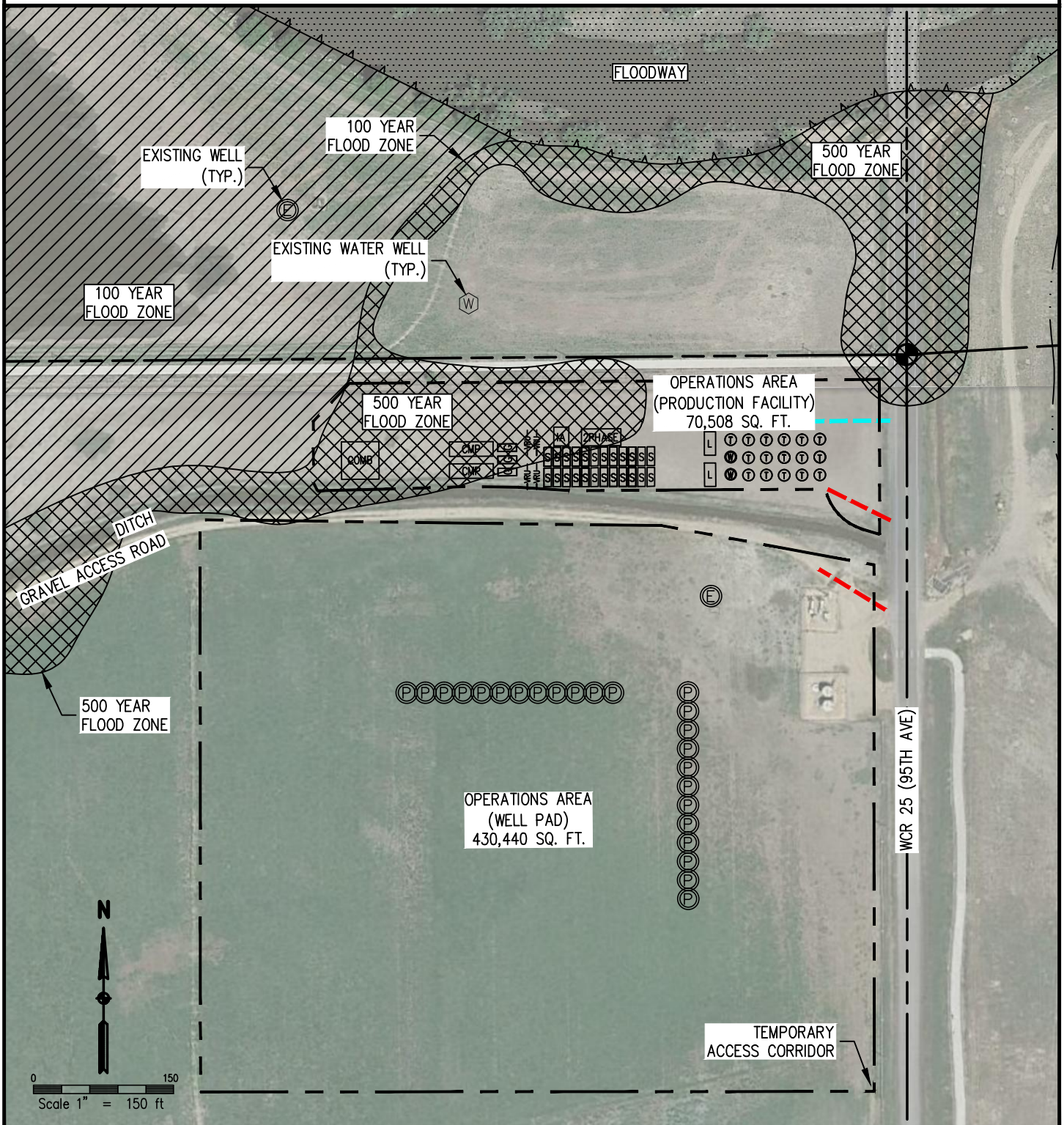


# EXHIBIT "A"

LOCATED IN THE NORTHEAST QUARTER OF THE SOUTHEAST QUARTER SECTION 36,  
TOWNSHIP 6 NORTH, RANGE 67 WEST OF THE 6TH P.M.,  
COUNTY OF WELD, STATE OF COLORADO



## LINETYPE LEGEND

	OPERATIONS AREA
	ACCESS CORRIDOR
	PIPELINE CORRIDOR

ORR WELLS  
SECTION 36, TOWNSHIP 6 NORTH, RANGE 67 WEST

WELD

PAGE  
11