

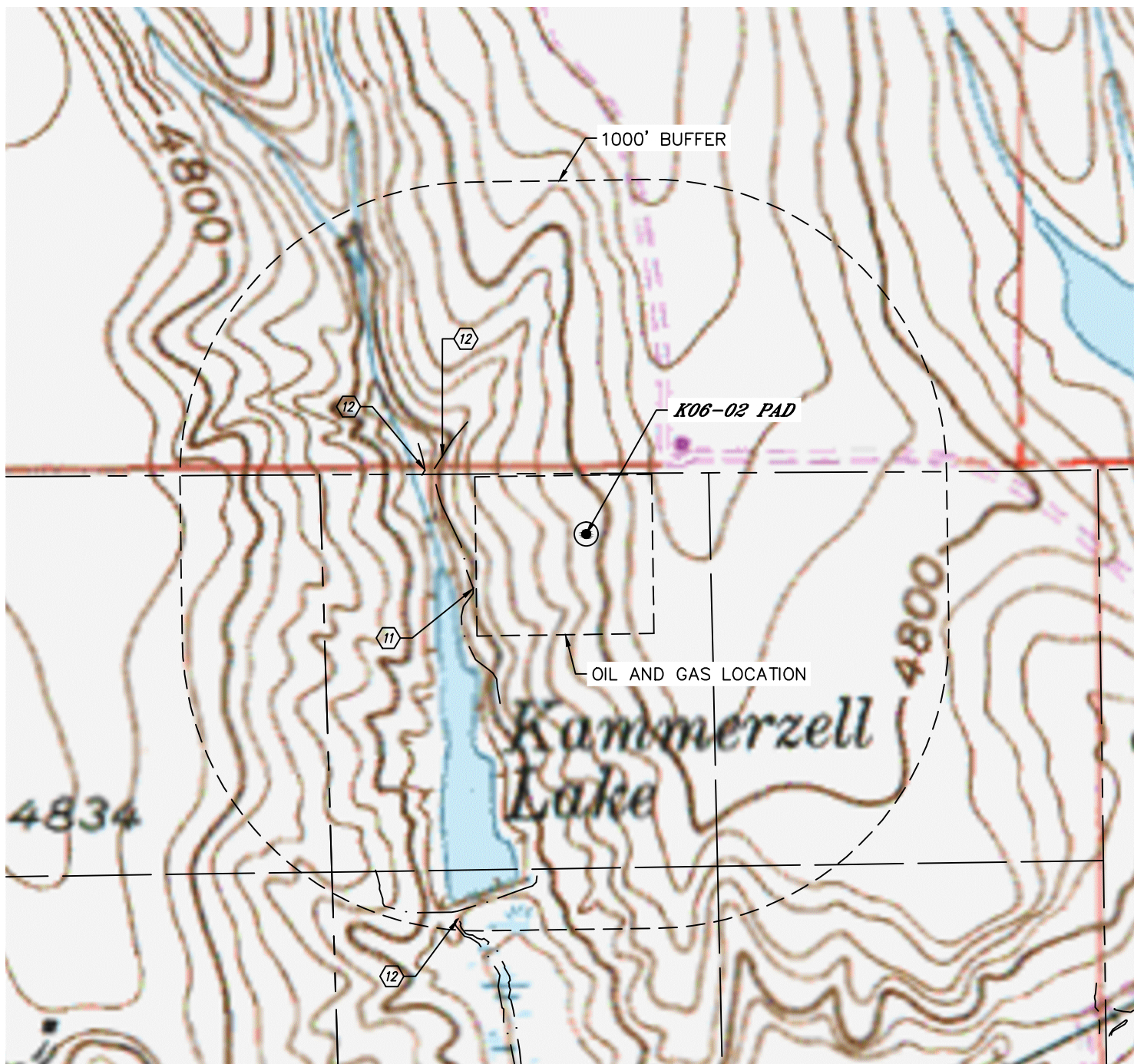


Lat40°, Inc. 6250 W. 10th Street, Unit 2, Greeley, CO 970-515-5294

## HYDROLOGY MAP

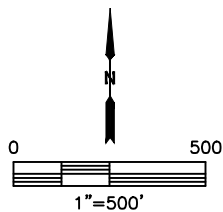
K06-02 PAD

SECTION: 6  
TOWNSHIP: 4N  
RANGE: 66W  
6TH. P.M.  
WELD COUNTY, CO



DISTANCES MEASURED FROM THE EDGE OF THE OIL AND GAS LOCATION.

- 11 KAMMERZELL LAKE 10' W
- 12 DITCH 130' & 170' NW, 962' S



DATE: 7/13/2016  
PROJECT#: 2016030