

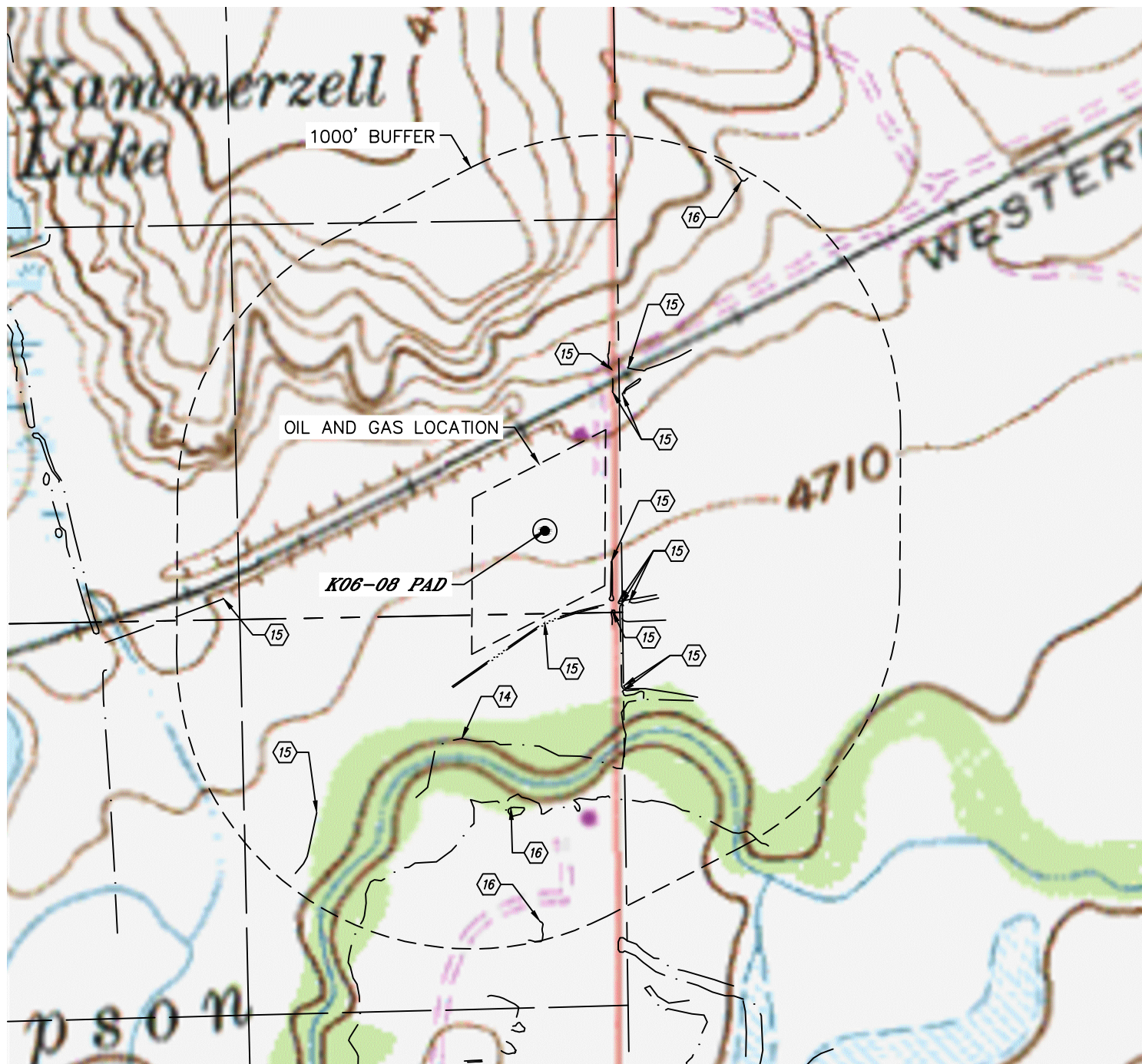


Lat40°, Inc. 6250 W. 10th Street, Unit 2, Greeley, CO 970-515-5294

HYDROLOGY MAP

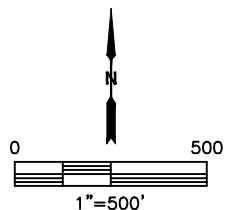
K06-08 PAD

SECTION: 6
TOWNSHIP: 4N
RANGE: 66W
6TH. P.M.
WELD COUNTY, CO



DISTANCES MEASURED FROM THE EDGE OF THE OIL AND GAS LOCATION.

- 14 BIG THOMPSON RIVER 288' SW
- 15 DITCH 19', 21', 71', 85', 87', 99', 126', 331' & 346' SE, 130', 133', 205' & 223' NE, 752' SW, 842' W
- 16 LOW AREA 538' & 935' SE, 962' NE



DATE: 7/13/2016
PROJECT#: 2016030