

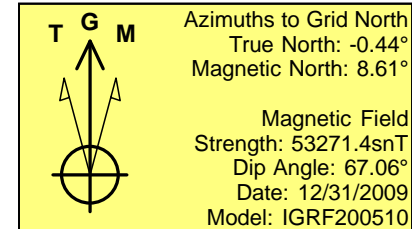
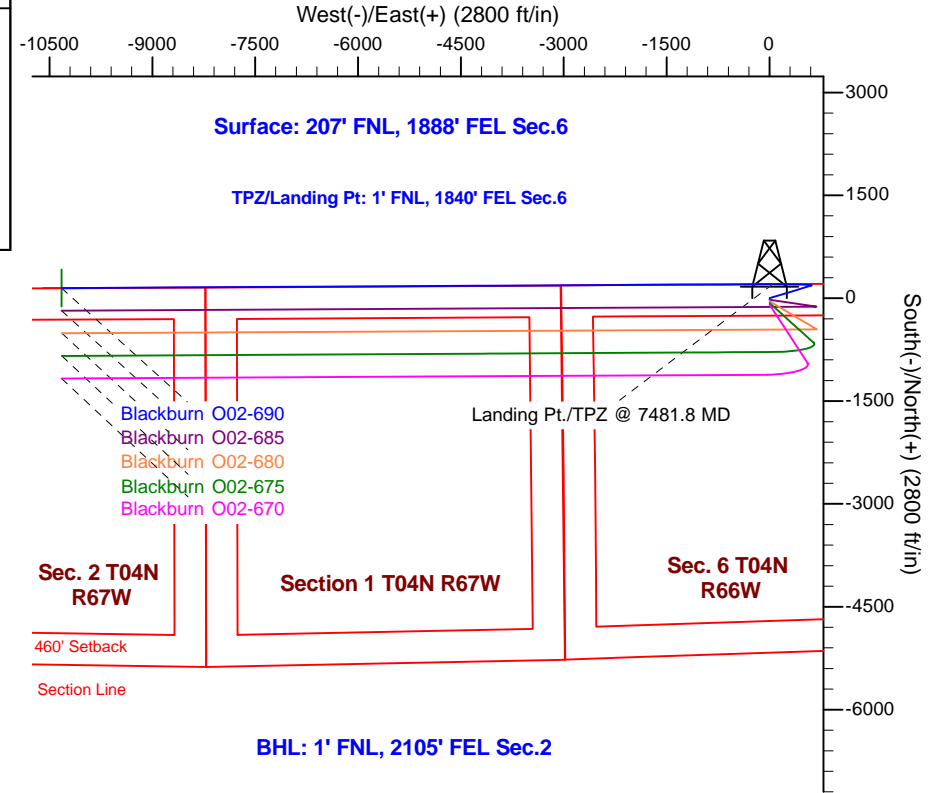
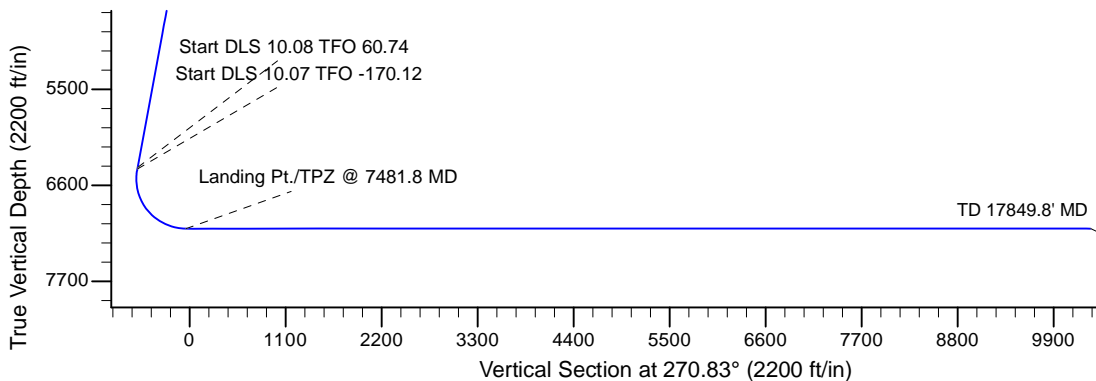
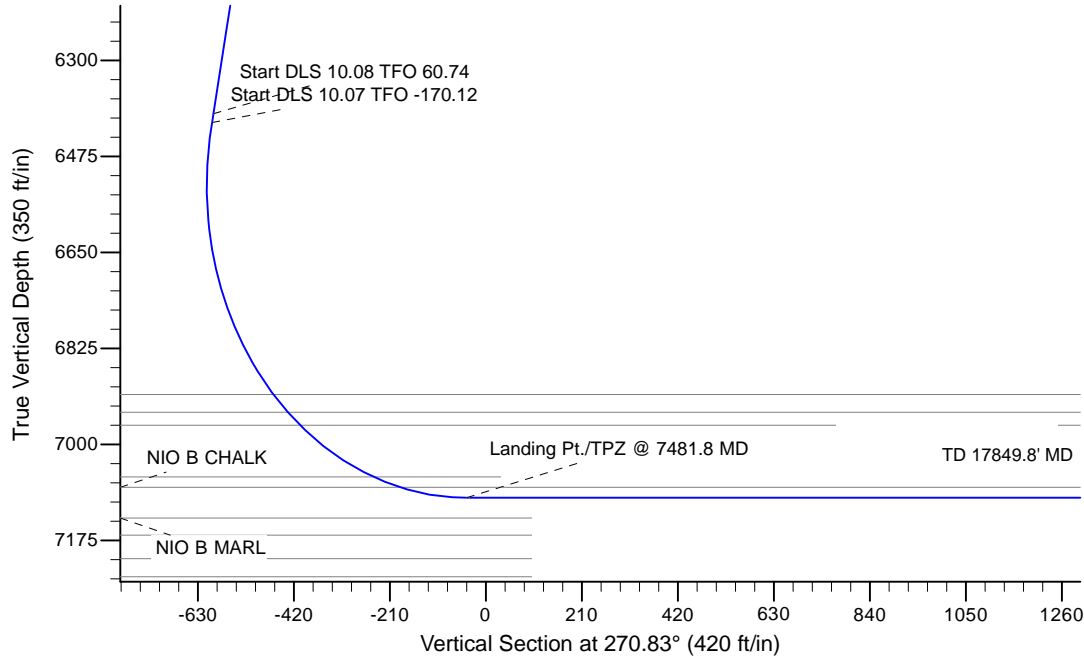
Project: Wattenberg Field  
Site: K (Section 6-T04N-R66W) Weld County, CO  
Well: Blackburn O02-690  
Wellbore: Original Drilling  
Design: APD - Rev 0

# Northern Region Drilling - Working

Geodetic System: US State Plane 1983  
Datum: North American Datum 1983  
Ellipsoid: GRS 1980  
Zone: Colorado Northern Zone  
System Datum: Mean Sea Level

## SECTION DETAILS

Sec	MD	Inc	Azi	TVD	+N/-S	+E/-W	Dleg	TFace	VSec	Target
1	0.0	0.00	0.00	0.0	0.0	0.0	0.00	0.00	0.0	
2	2900.0	0.00	0.00	2900.0	0.0	0.0	0.00	0.00	0.0	
3	3450.0	11.00	73.00	3446.6	15.4	50.3	2.00	73.00	-50.1	
4	6455.6	11.00	73.00	6397.0	183.1	598.8	0.00	0.00	-596.1	
5	6472.0	11.90	80.02	6413.1	183.8	601.9	10.08	60.74	-599.2	
6	7481.8	90.00	269.69	7097.0	205.0	45.0	10.07	-170.12	-42.0	
7	17849.8	90.00	269.69	7097.0	148.8	-10322.9	0.00	-90.00	10324.0	Blackburn O02-690 BHL 1'FNL, 2105'FEL



WELL DETAILS: Blackburn O02-690					
Ground Level: 4780.0					
0.0	0.0	Northing 1370426.15	Easting 3189822.49	Latitude 40.348220	Longitude -104.818950
Plan: APD - Rev 0 (Blackburn O02-690/Original Drilling)					
Created By: Shailey Jewell			Date: 13:26, August 04 2016		
OK to submit with 2A as per Noble Drilling 8/4/2016 1:33					